



ALF-WUK4A

Full 4K Switcher



Preface

Read this user manual carefully before using the product. Pictures are shown in this manual for reference only. Different models and specifications are subject to real product.

This manual is only for operation instruction, please contact the local distributor for maintenance assistance. In the constant effort to improve the product, we reserve the right to make function or parameter changes without notice or obligation.

FCC Statement

This equipment generates, uses and can radiate radio frequency energy and, if not installed and used in accordance with the instructions, may cause harmful interference to radio communications. It has been tested and found to comply with the limits for a Class B digital device, pursuant to part 15 of the FCC Rules. These limits are designed to provide reasonable protection against harmful interference in a commercial installation.

Operation of this equipment in a residential area is likely to cause interference, in which case the user at their own expense will be required to take whatever measures may be necessary to correct the interference.

Any changes or modifications not expressly approved by the manufacture would void the user's authority to operate the equipment.



SAFETY PRECAUTIONS

To ensure the best performance from the product, please read all instructions carefully before using the device. Save this manual for further reference.

- Unpack the equipment carefully and save the original box and packing material for possible future shipment.
- Follow basic safety precautions to reduce the risk of fire, electrical shock and injury to persons.
- Do not dismantle the housing or modify the module. It may result in electrical shock or burn.
- Using supplies or parts not meeting the products' specifications may cause damage, deterioration or malfunction.
- Refer all servicing to qualified service personnel.
- To prevent fire or shock hazard, do not expose the unit to rain, moisture or install this product near water.
- Do not put any heavy items on the extension cable.
- Do not remove the housing of the device as opening or removing housing may expose you to dangerous voltage or other hazards.
- Install the device in a place with adequate ventilation to avoid damage caused by overheating.
- Keep the module away from liquids.
- Spillage into the housing may result in fire, electrical shock, or equipment damage. If an object or liquid falls or spills on to the housing, unplug the module immediately.
- Do not twist or pull the ends of the optical cable. It can cause malfunction.
- Do not use liquid or aerosol cleaners to clean this unit. Always unplug the power to the device before cleaning.
- Unplug the power cord when left unused for a long period of time.
- Information on disposal for scrapped devices: do not burn or mix with general household waste, please treat this as normal electrical wastes.

Table of Content

1. Product Introduction.....	1
1.1 Features	1
1.2 Package List	2
2. Technical Specification.....	3
3. Panel Description.....	4
3.1 Front Panel.....	4
3.2 Rear Panel.....	5
4. System Connection.....	6
4.1 Usage Precaution	6
4.2 System Diagram	6
5. Source Button Control.....	7
5.1 Manual Switching	7
5.2 Automatic Switching	7
6. IR Remote Control	8
7. RS232 Control	9
7.1 RS232 Control Software	9
7.2 RS232 Commands	11
7.2.1 Signal Switching	11
7.2.2 Source Device Control.....	11
7.2.3 Display Device Control	12
7.2.4 Audio Selection.....	13
7.2.5 System Control	13
8. EDID Management	14
8.1 Predefined EDID Setting.....	14
8.2 User Defined EDID Setting.....	15
9. ARC Mode	16
10. Firmware Upgrade	17
11. Panel Drawing	17
12. Troubleshooting & Maintenance	18
13. Customer Service	19

1. Product Introduction

The ALF-WUK4A is an ultrathin auto switcher with four HDMI video inputs and one HDMI output. This switcher supports HDMI video resolution up to 4Kx2K@60Hz 4:4:4 HDR and multichannel audio. Except passing EDID information from the display, there are multiple built-in EDID settings to simplify an installation. The switcher will de-embed digital stereo audio to provide an analog audio source for an existing audio system. The switcher also supports audio return channel (ARC) for transmitting audio back to HDMI input port from the connected display.

In auto-switch mode, it switches to an HDMI input as soon as a new source is connected. When the active input is removed, the switcher will select the first source on the lowest numbered input. The switcher may also be controlled via RS232, IR with the included remote, or from the source button on the front of the switcher.

1.1 Features

- Switches any one of four HDMI inputs to one HDMI output.
- Supports video resolution up to 4Kx2K@60Hz 4:4:4 HDR.
- 18Gbps high bandwidth.
- Fully compliant with the HDMI 2.0 and HDCP2.2 specifications.
- Supports audio return channel (ARC).
- Advanced EDID management: multiple preset and user defined allowed.
- Controllable via RS232 and IR.
- Supports CEC.
- Provides seven LEDs to indicate the current operating status and to assist troubleshooting an installation.
- Firmware upgrade by Micro-USB port.

1.2 Package List

- 1x HDMI2.0 4x1 Switcher
- 2x Mounting Ears
- 4x Mounting Screws
- 4x Plastic Cushions
- 1x RS232 Cable (3.5mm to DB9)
- 1x IR Remote
- 1x IR Receiver
- 1x Power Adapter (5V DC 1A)
- 1x User Manual

Note: *Please contact your distributor immediately if any damage or defect in the components is found.*

2. Technical Specification

Video Input	
Input	(4) HDMI
Input Connector	(4) Female type-A HDMI
HDMI Input Resolution	Up to 4Kx2K@60Hz 4:4:4
HDMI Standard	2.0
HDCP Version	2.2
Video Output	
Output	(1) HDMI
Output Connector	(1) Female type-A HDMI
HDMI Output Resolution	Up to 4Kx2K@60Hz 4:4:4
HDMI Standard	2.0
HDCP Version	2.2
Audio	
Output	(1) AUDIO
Output Connector	(1) 3.5mm mini stereo audio jack
Audio Format	PCM
Audio Output Impedance	70 Ohms
Frequency Response	20Hz to 20kHz, ±3dB
Control	
Control	(1) IR IN; (1) RS232
Control Connector	(2) 3.5mm mini jack
General	
Bandwidth	18Gbps
Operation Temperature	-10°C ~ +55°C
Storage Temperature	-25°C ~ +70°C
Relative Humidity	10%-90%
Power Supply	Input:100V~240V AC; Output: 5V DC 1A
Power Consumption	5W(Max)
Dimension (W*H*D)	194mm x 15mm x 81mm
Net Weight	324g

Note: Please adopt high-qualified HDMI cable fully compliant with HDMI2.0 for reliable transmission and connection.

3. Panel Description

3.1 Front Panel



① Auto/Source Button:

- Press to switch to next input source.
- Press and hold at least three seconds to switch between manual mode and auto mode.

② Power LED: The LED illuminates red when power is applied.

③ Audio Mode LED:

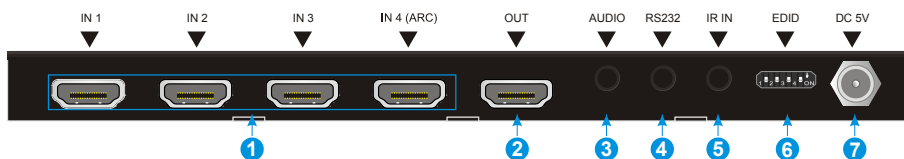
- Illuminates green when de-embedding audio.
- Illuminates yellow when in ARC mode.

④ Switching Mode LED:

- Illuminates green in manual switch mode.
- Illuminates yellow in auto-switch mode.

⑤ Input 1~4 LED: The LED illuminates green when there is HDMI input on the corresponding channel.

3.2 Rear Panel



- ① IN 1~4: Four type-A female HDMI input ports to connect HDMI sources. The input 4 port supports ARC.
- ② OUT: Type-A female HDMI output port to connect HDMI display.
- ③ AUDIO: 3.5mm mini jack for analog audio output.
- ④ RS232: 3.5mm mini jack to connect control device (e.g. PC).
- ⑤ IR IN: 3.5mm mini jack to connect the included IR remote.
- ⑥ EDID: 4-pin DIP switch for EDID setting.
- ⑦ DC 5V: DC port to connect a 5V DC AC power adapter.

Note: Output HDCP compliant status depends on input signal. When the input signal is with HDCP, then output signal is with HDCP and vice versa.

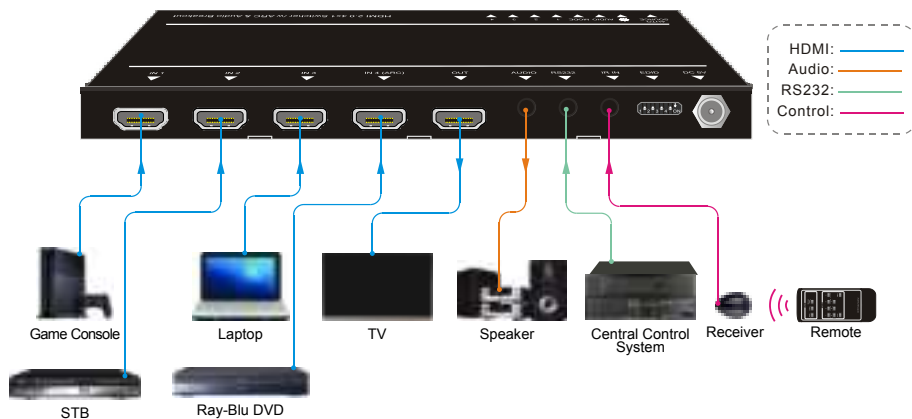
4. System Connection

4.1 Usage Precaution

- Make sure all components and accessories are included before installation.
- System should be installed in a clean environment with proper temperature and humidity.
- All of the power switches, plugs, sockets, and power cords should be insulated and safe.
- All devices should be connected before power on.

4.2 System Diagram

The following diagram illustrates typical input and output connections that can be utilized with this switcher:



5. Source Button Control

5.1 Manual Switching

When the switcher is in manual switching mode, the Switching Mode LED will be green. Press **Auto/Source** button to switch to the next input.

5.2 Automatic Switching

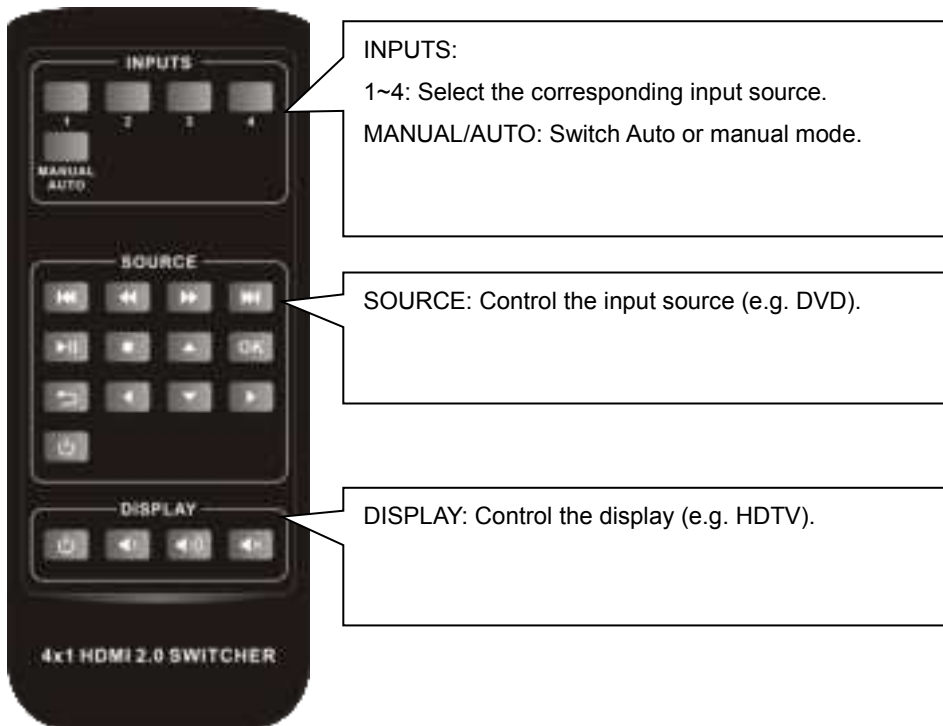
To enable automatic switching, press and hold the **Auto/Source** button for three seconds. The Switching Mode LED will turn to yellow.

When in auto-switch mode, the switcher follows the rules in the certain circumstances:

- **New Input:** Upon detecting a new input, the switcher will automatically select the new source.
- **Reboot:** Once power is restored to the switcher, if the last selected source is still available, the switcher will still output this signal, otherwise, the switcher will switch to the first available active input starting at HDMI Input 1.
- **Source Removed:** When an active source is removed, the switcher will switch to the first available active input starting at HDMI Input 1.

6. IR Remote Control

Please connect an IR receiver to the IR input port; the IR remote is used for signal switching and it can also be used to control source and display devices based on CEC function.



Note:

- Due to the HDMI input 4 port does not support CEC, the source device connected to this port cannot be controlled by IR remote.
- The source and display devices are required to support CEC when the IR remote is used to control them.

7. RS232 Control

Connect the switcher to the control device (e.g. PC) with RS232 cable and set the parameters in this manner, the control device can control this switcher by RS232 commands.

7.1 RS232 Control Software

Installation: Copy the control software file to the computer connected with this switcher.

Uninstallation: Delete all the control software files in corresponding file path.

Basic Settings

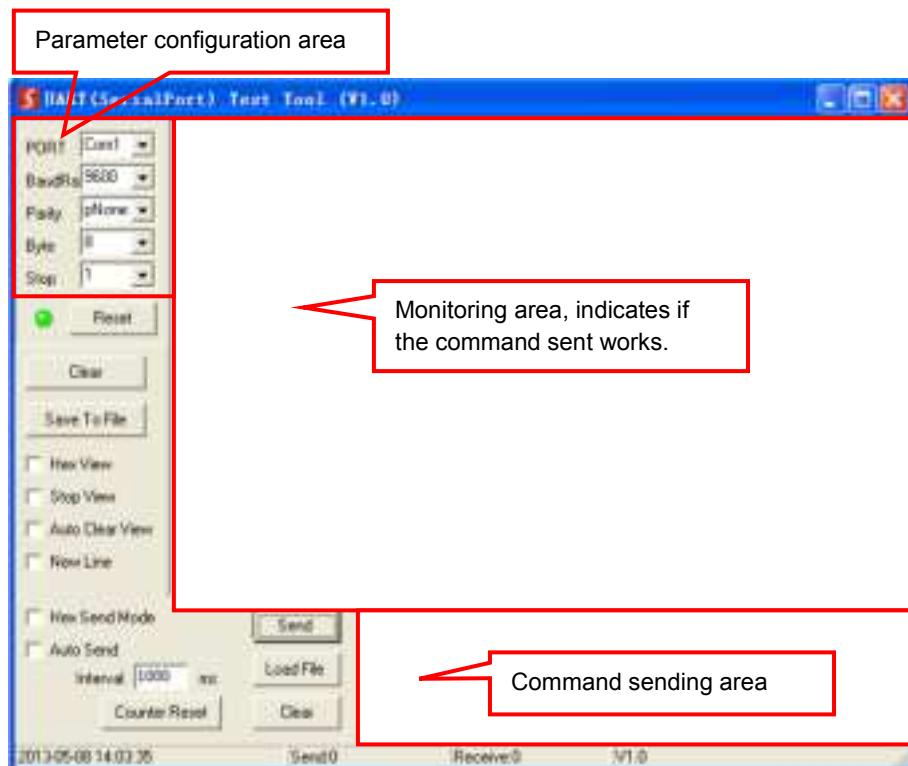
First of all, please connect all input devices and output devices, then connect to computer which has the RS232 control software installed

Below take the software **CommWatch.exe** as example.

Double-click the following icon:



The interface of the control software is shown as below:



Please set the parameters of COM number, bound rate, data bit, stop bit and the parity bit correctly, then the RS232 commands can be sent in Command Sending Area.

Baud rate: 9600;

Data bit: 8;

Stop bit: 1;

Parity bit: none.

7.2 RS232 Commands

Note: All commands must be ended with "<CR><LF>".

7.2.1 Signal Switching

Function	Command	Feedback Example
Switch to HDMI input 1.	>>HDMI1	<<HDMI1
Switch to HDMI input 2.	>>HDMI2	<<HDMI2
Switch to HDMI input 3.	>>HDMI3	<<HDMI3
Switch to HDMI input 4.	>>HDMI4	<<HDMI4
Enable auto-switching mode.	>>AUTO	<<AUTO Switch
Enable manual switching mode.	>>MANUAL	<<MANUAL Switch

7.2.2 Source Device Control

Note:

- The input source device is required to support CEC.
- Due to the HDMI input 4 port does not support CEC, the source device connected to this port cannot be controlled by IR remote.

Function	Command	Feedback Example
Turn on the input source device, e.g. Blue-ray DVD.	>>SRCon	<<SRCon
Turn off the input source device, e.g. Blue-ray DVD.	>>SRCOff	<<SRCOff
Play	>>SRCPlay	<<SRCPlay
Pause	>>SRCPause	<<SRCPause
Stop	>>SRCStop	<<SRCStop
Fast Forward x1	>>SRCForward	>>SRCForward
Fast Rewind x1	>>SRCBackward	<<SRCBackward

Next Section	>>SRCSkipForward	>>SRCSkipForward
Previous Section	>>SRCSkipBackward	<<SRCSkipBackward
Open the menu setting	>>SRCMenu	>>SRCMenu
Go back	>>SRCBack	>>SRCBack
Confirm (OK)	>>SRCOk	>>SRCOk
Exit	>>SRCExit	>>SRCExit
Up direction	>>SRCUp	>>SRCUp
Down direction	>>SRCDown	>>SRCDown
Left direction	>>SRCLeft	>>SRCLeft
Right direction	>>SRCRight	<<SRCRight

7.2.3 Display Device Control

Note: The display device is required to support CEC.

Function	Command	Feedback Example
Turn on the display device, e.g. HDTV.	>>TVOn	>>TVOn
Turn off the display device, e.g. HDTV.	>>TVOff	>>TVOff
Volume up.	>>TVVOL+	>>TVVOL+
Volume down.	>>TVVOL-	>>TVVOL-
Mute.	>>TVMUTE	>>TVMUTE
Unmute	<<TVUNMUTE	<<TVUNMUTE

7.2.4 Audio Selection

Function	Command	Feedback Example
Select ARC audio channel.	>>AUDExternal	<<AUDExternal
Select the HDMI audio input channel.	>>AUDInternal	>>AUDInternal


7.2.5 System Control

Function	Command	Feedback Example
System reset.	>>RESET	>>RESET
Get system information.	>>SYSInfo	<<AUDExternal << ALF-WUK4A << V1.0.0 << ----- <<HDMI1 <<Auto Switch <<AUDExternal <<EDID0

8. EDID Management

8.1 Predefined EDID Setting

The rear panel boasts a 4-pin DIP switch to set the predefined EDID. The ten types of embedded EDID and their corresponding switch status are shown in the below list.

 <p>When in the lower position, the switch represents “ON”, while putting the switch in the up position, it represents “OFF”.</p>	ID	Switch Status	Video	Audio
	0	0000	Pass though	Pass though
	1	0001	1920x1080p@60Hz 4:4:4 RGB 8bit	Stereo
	2	0010	1920x1080p@60Hz 4:4:4 RGB 8bit	High Definition
	3	0011	1920x1080p@60Hz 4:4:4 RGB 12bit	Stereo
	4	0100	1920x1080p@60Hz 4:4:4 RGB 12bit	High Definition
	5	0101	3840x2160p@60Hz 4:2:0 RGB 8bit	Stereo
	6	0110	3840x2160p@60Hz 4:2:0 RGB 8bit	High Definition
	7	0111	3840x2160p@60Hz 4:4:4 RGB 10bit HDR	Stereo
	8	1000	3840x2160p@60Hz 4:4:4 RGB 10bit HDR	High Definition
	9	1001	1280x800@60Hz	Stereo
	10	1010	1920x1200@60Hz	Stereo

8.2 User Defined EDID Setting

Except directly invoking the embedded EDID, the specific EDID can be customized. There are five EDID that can be customized following the below operations.

- 1) Rename the user defined EDID according the following format.

EC_xx_xxxx_xxx.bin

- EC: Represents EDID.
- xx: Represents EDID ID. It is 11~15.
- xxxx: Represents the video parameter.
- xxx: Represents the audio format.

Example: EC_11_720P_LPCM.bin

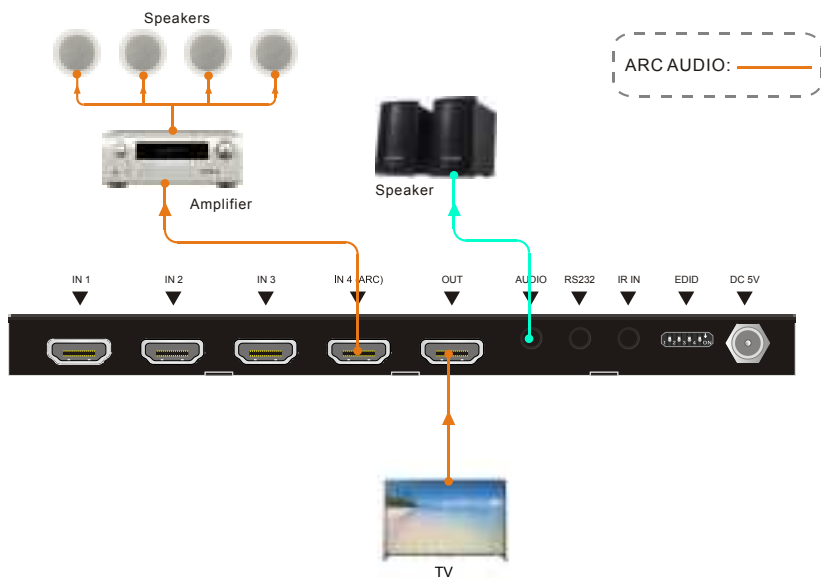
- 2) Power on the switcher, and then connect the switcher to the PC with USB cable. The PC will automatically detect a U-disk named "BOOTDISK".
- 3) Double-click the U-disk, a file named "READY.TXT" will be showed.
- 4) Copy the user defined EDID (such as **EC_11_720P_LPCM.bin**) to the "BOOTDISK" U-disk.
- 5) Reopen the U-disk to check the filename "READY.TXT" which automatically becomes "SUCCESS.TXT", if yes, the user defined EDID was imported into the switcher and saved as its corresponding EDID ID successfully.
- 6) Repeat the above third to fifth step to copy other user defined EDIDs to the "BOOTDISK" U-disk.
- 7) Remove the USB cable, connect the adaptor to power on the switcher.
- 8) The new EDID also can be invoked via the 4-pin DIP switch directly. The EDID ID and its corresponding switch status are shown in the below list.

ID	Switch Status
11	1011
12	1100
13	1101
14	1110
15	1111

9. ARC Mode

Audio Return Channel (ARC) allows audio from a display to pass “upstream” through an HDMI cable to an audio processing device, such as an AV amplifier. When ARC mode is active on the switcher, the ARC stream will pass to the active HDMI source device if it can process the signal.

Only the HDMI input 4 port features ARC, when the display and AV amplifier support ARC, the audio connection diagram is shown below:

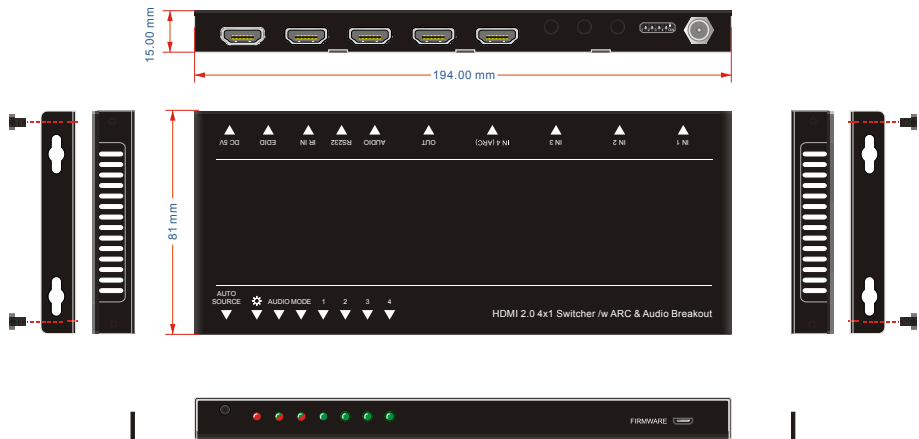


10. Firmware Upgrade

Please follow the steps as below to upgrade firmware by the Micro-USB port on the rear panel:

- 1) Prepare the latest upgrade file (.bin) and rename it as "USERAPP.bin"
- 2) Connect the switcher to the PC with USB cable, and then power on the switcher.
The PC will automatically detect a U-disk named of "BOOTDISK".
- 3) Double-click the U-disk, a file named of "READY.TXT" will be showed.
- 4) Directly copy the latest upgrade file (.bin) to the "BOOTDISK" U-disk.
- 5) Reopen the U-disk to check the filename "READY.TXT" which automatically becomes "SUCCESS.TXT", if yes, the firmware was updated successfully, otherwise, the firmware update has failed, the name of upgrade file (.bin) should be confirmed again, and then follow the above steps to update again.
- 6) Remove the USB cable after firmware upgrade.

11. Panel Drawing



12. Troubleshooting & Maintenance

Problems	Potential Causes	Solutions
Color loss or no video signal output in HDMI display.	The connecting cables may not be connected correctly or may be broken.	Check whether the cables are connected correctly and in working condition.
No HDMI signal while local HDMI input is in normal working state.		
Splash screen on output devices.	Poor quality connecting cable.	Change for another cable of good quality.
Cannot control this switcher by control device (e.g. a PC) through RS232 port.	Wrong RS232 communication parameters.	Make sure the RS232 communication parameters are correct.
	This switcher is broken.	Send it to authorized dealer for repairing.
Static becomes stronger when connecting the video connectors.	Bad grounding.	Check the grounding and make sure it is connected well.

Note: If your problem still remains after following the above troubleshooting steps, please contact your local dealer or distributor for further assistance.

13. Customer Service

The return of a product to our Customer Service implies the full agreement of the terms and conditions hereinafter. These terms and conditions may be changed without prior notice.

Remarks: For further assistance please contact your local distributor.

After-sales Service

If you experience any problems using the ALF-SUK4, please refer to this user manual. Any transport costs are borne by the users during the warranty.

1) Product Limited Warranty: ALFAtron warrants that its products will be free from defects in materials and workmanship for **SEVEN years**, which starts from the day you buy this product (The purchase invoice shall prevail).

Proof of purchase - in the form of a bill of sale or receipted invoice which is evidence that the unit is within the Warranty period - must be presented to obtain warranty service.

2) What the warranty does not cover (servicing available for a fee):

- Warranty expiration.
- Factory applied serial number has been altered or removed from the product.
- Damage, deterioration or malfunction caused by:
 - Normal wear and tear
 - Use of supplies or parts not meeting our specifications
 - No certificate or invoice as the proof of warranty.
 - The product model showed on the warranty card does not match with the model of the product for repairing or had been altered.
 - Damage caused by force majeure.
 - Servicing not authorized by ALFAtron
 - Any other cause which does not relate to a product defect
- Delivery, installation or labour charges for installation or setup of the product

3) Technical Support: Email our after-sales department and please inform us of the following information about your case.

- Product version and name.
- Detailed failure description

1. Limited warranty in respect of Alfatron Products Only

1.1 This limited warranty covers defects in materials and workmanship in this product.

1.2 Should warranty service be required, proof of purchase must be presented to the Company. The serial number on the product must be clearly visible and not have been tampered with in any way whatsoever.

1.3 This limited warranty does not cover any damage, deterioration or malfunction resulting from any alteration, modification, improper or unreasonable use or maintenance, misuse, abuse, accident, neglect, exposure to excess moisture, fire, improper packing and shipping (such claims must be presented to the carrier), lightning, power surges, or other acts of nature. This limited warranty does not cover any damage, deterioration or malfunction resulting from the installation or removal of this product from any installation, any unauthorized tampering with this product, any repairs attempted by anyone unauthorized by the Company to make such repairs, or any other cause which does not relate directly to a defect in materials and/or workmanship of this product. This limited warranty does not cover equipment enclosures, cables or accessories used in conjunction with this product.

This limited warranty does not cover the cost of normal maintenance. Failure of the product due to insufficient or improper maintenance is not covered.

1.4 The Company does not warrant that the product covered hereby, including, without limitation, the technology and/or integrated circuit(s) included in the product, will not become obsolete or that such items are or will remain compatible with any other product or technology with which the product may be used.

1.5 Only the original purchaser of this product is covered under this limited warranty. This limited warranty is not transferable to subsequent purchasers or owners of this product.

1.6 Unless otherwise specified, the goods are warranted in accordance with the manufacturer's product specific warranties against any defect attributable to faulty workmanship or materials, fair wear and tear being excluded.

1.7 This limited warranty only covers the cost of faulty goods and does not include the cost of labor and travel to return the goods to the Company's premises.

1.8 In the event of any improper maintenance, repair or service being carried out by any third persons during the warranty period without the Company's written authorization, the limited warranty shall be void.

1.9 A 7 (seven) year limited warranty is given on the aforesaid product where used correctly according to the Company's instructions, and only with the use of the Company's components.

1.10 The Company will, at its sole option, provide one of the following three remedies to whatever extent it shall deem necessary to satisfy a proper claim under this limited warranty:

1.10.1 Elect to repair or facilitate the repair of any defective parts within a reasonable period of time, free of any charge for the necessary parts and labor to complete the repair and restore this product to its proper operating condition.; or

1.10.2 Replace this product with a direct replacement or with a similar product deemed by the Company to perform substantially the same function as the original product; or

1.10.3 Issue a refund of the original purchase price less depreciation to be determined based on the age of the product at the time remedy is sought under this limited warranty.

1.11 The Company is not obligated to provide the Customer with a substitute unit during the limited warranty period or at any time thereafter.

1.12 If this product is returned to the Company this product must be insured during shipment, with the insurance and shipping charges prepaid by the Customer. If this product is returned uninsured, the Customer assumes all risks of loss or damage during shipment. The Company will not be responsible for any costs related to the removal or reinstallation of this product from or into any installation. The Company will not be responsible for any costs related to any setting up this product, any adjustment of user controls or any programming required for a specific installation of this product.

1.13 Please be aware that the Company's products and components have not been tested with competitor's products and therefore the Company cannot warrant products and/or components used in conjunction with competitor's products.

1.14 The appropriateness of the goods for the purpose intended is only warranted to the extent that the goods are used in accordance with the Company's installation, classification and usage instructions.

1.15 Any claim by the Customer which is based on any defect in the quality or condition of the goods or their failure to correspond with specification shall be notified in writing to the Company within 7 days of delivery or (where the defect or failure was not apparent on reasonable inspection by the Customer) within a reasonable time after discovery of the defect or failure, but, in any event, within 6 months of delivery.

1.16 If delivery is not refused, and the Customer does not notify the Company accordingly, the Customer may not reject the goods and the Company shall have no liability and the Customer shall pay the price as if the goods had been delivered in accordance with the Agreement.

1.17 THE MAXIMUM LIABILITY OF THE COMPANY UNDER THIS LIMITED WARRANTY SHALL NOT EXCEED THE ACTUAL PURCHASE PRICE PAID FOR THE PRODUCT.