



**Green Lion**

**MULTI-FORCE  
VACUUM, AIR BLOWER,  
and AIR DUSTER**

SKU: GNMUFORCEGY  
Model No: GB-286X

## Table of Contents

Manual Preface	2
Specifications	2
Quick View	3
Components	4
Installation Instructions	4
Usage Method	6
Dust Cup Cleaning Instructions	7
General Fault Analysis and Treatment	8
Environmental Protection Instructions	9
Disposal	10
Warranty	10
Contact Us	10

## Manual Preface

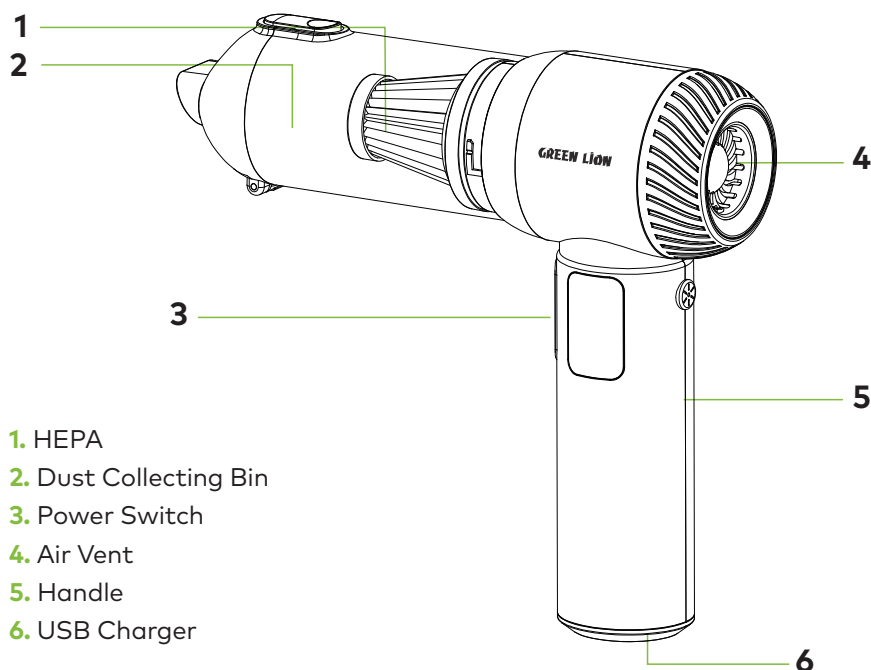
1. Please read all contents of this manual carefully before using this product.
2. Keep this manual properly. If you transfer the product to a third party for use, please attach this manual with the machine.
3. Any operation inconsistent with the instructions in the manual may cause serious personal injury, property loss, or damage to the product itself.
4. Our company will not bear any legal liability for the loss caused by the failure to operate in accordance with the product instructions.
5. Please read the instructions that are very important to your personal safety carefully to avoid accidents and possible damage to the product.
6. Please be very careful when working with the product to avoid danger.
7. Keep the product properly and keep it out of the reach of children and people who are unable to judge the environmental risk.
8. Do not store the product at a high place to avoid the risk of accidental fall.

## Specifications

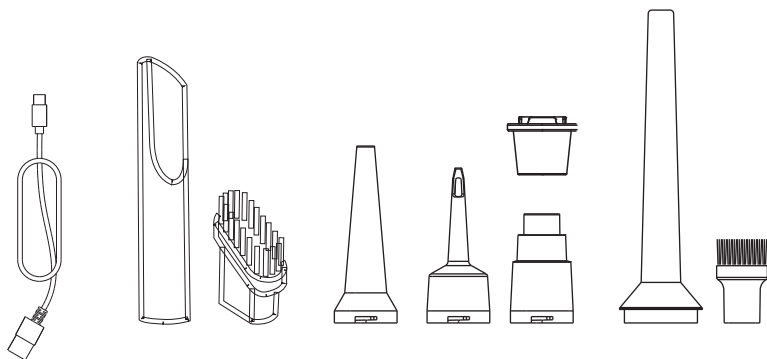
Model No.	GB-286X
Material	ABS
Motor	High Speed Brushless
Battery	6000mAh
Power	100W
Voltage	11.1V
Suction Power	15000Pa $\pm$ 10%
Speed	3 Levels
Airflow	Up to 680 L/min

Charging Port	Type-C
Charging Time	3-4 Hours
Working Time	30 min / 18 min / 12 min
Noise Level	≤85 dB
Product Weight	490 g
Dimensions	21*20*6.5 cm

## Quick View



## Components



Charging Line

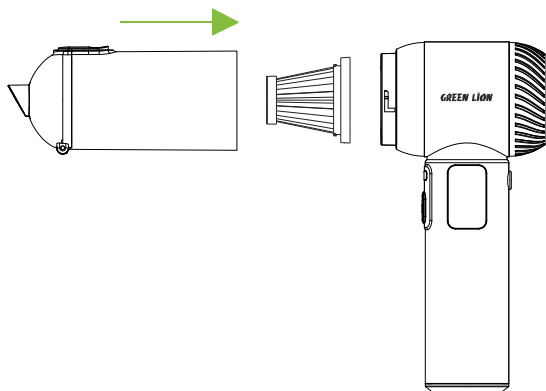
Multifunctional Suction  
Nozzle Combination

Air Exhaust and Blowing  
Nozzle

## Installation Instructions

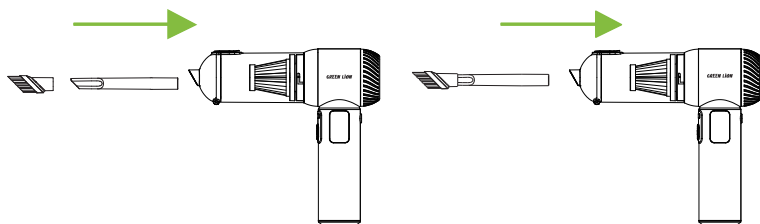
Installation of main machine dust collecting cup group

1. Install the HEPA filter cover into the dust collecting cup as shown in the figure.
2. Rotate the dust collecting cup assembly counterclockwise as shown in the figure, and a "click" sound indicates that the installation is successful.



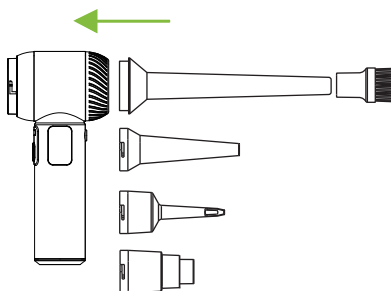
### Dust Collection Mode:

Insert the two-in-one flat suction into the suction port of the host.



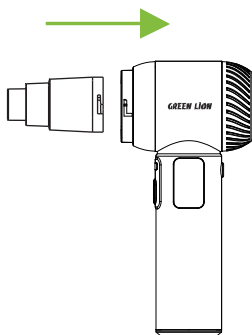
### Blowing Mode:

According to the arrow direction as shown in the figure, install the air nozzle on the host.



### Extraction Mode:

According to the arrow direction as shown in the figure, install the air extraction nozzle on the host.



## Usage Method

### Preparation Before Use:

Charge with a 1a~2a mobile phone charger. Make sure that all parts of the wireless vacuum cleaner have been assembled in place. Check whether the power is sufficient to ensure the normal operation of the product.

Do not start the machine when charging. The red indicator light of the charging line is in normal charging state, and the green light is always on when fully charged.

Insert the charging cable into the USB interface and the other end into the charging interface.

### Charging Instructions:

Insert the charging cable into the USB interface and the other end into the charging interface.

Do not start the machine when charging. The red indicator light of the charging line is in normal charging state, and the green light is always on when fully charged.

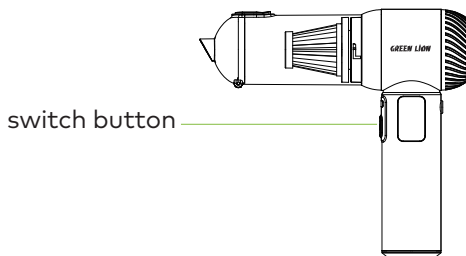
### Start-up:

Press the switch button for 3 seconds, the main machine starts to the standard working mode, and the working indicator light is green and always on.

### Close:

Press the switch button for 3 seconds to close.

Switch Button



### Be Careful:

When using a new battery or storing a battery for the first time for a long time, please fully charge the battery.

Please charge for more than 3 hours before the first use.

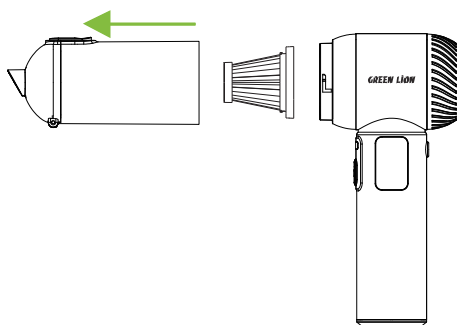
Please fully charge before long-term storage. If the battery enters the power shortage state, the machine will not be able to charge, affecting normal use.

## Dust Cup Cleaning Instructions

### Cleaning and Maintenance:

#### Clean the Dust Collecting Cup:

1. First, rotate the dust collecting cup in the direction shown in the figure and remove it from the host.

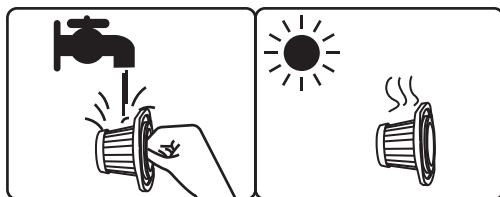


2. Take out the HEPA filter screen in the dust bin and dump the garbage into the garbage can.

3. Separate the HEPA filter cover and dust collecting cup in sequence, and clean the HEPA filter cover with a brush. The dust collecting cup can be washed and dried before use.

4. To reinstall the dust bin, put the HEPA filter screen into the dust bin, and rotate and tighten it in the opposite direction according to step 1 above






## General Fault Analysis and Treatment

Product Name	Possible Causes	Treatment Method
Machine Inoperative	1. Insufficient battery current	Timely charging
	2. Machine power switch not activated	Start power switch
Unable to Charge	1. Check whether the adapter is 5V	Select 5V adapter
	2. Circuit board broken	Contact customer service
Machine Suction Decreases	1. The filter screen or filter cover is blocked	Timely cleaning
	2. Low battery	Timely charging
	3. Machine suction outlet blocked	Clean the suction port
Excessive Noise	1. Dust collecting cup is full	Clean the dust collecting cup
	2. The suction port of the machine is blocked	Clean the suction port
	3. Machine suction outlet blocked	Clean HEPA filter screen
	4. Filter assembly not installed	Install the filter assembly

## Environmental Protection Instructions

Part Name	Hazardous Materials					
	Pb	Hg	Cd	Cr (VI)	PBB	PBDE
Plastic	○	○	○	○	○	○
Electric Machinery	×	○	○	○	○	○
Board Level Assembly	○	○	○	○	○	○
Type-C Charger	○	○	○	○	○	○
Metal Parts	○	○	○	○	○	○
Battery	○	○	○	○	○	○
Other	○	○	○	○	○	○

 <p>This environmental protection service life is only applicable to the product working under the conditions specified in the user manual.</p>	<p>This form is prepared in accordance with SJ / t11364.</p> <p>O: Indicates that the content of the hazardous substance in all homogeneous materials of the component is below the limit specified in GB / T 26572.</p> <p>10: It means that the content of the hazardous substance in at least one homogeneous material of the component exceeds the limit specified in GB / T 26572.</p> <p>The hazardous substances contained in some components of the product cannot be replaced under the current international technical level. The marked environmental protection service life of the product refers to the safe service life that the hazardous substances or elements contained in the product will not leak under normal service conditions. This table indicates that there are hazardous substances in our products, and the built-in products do not include all the above components.</p>
---	--



## Disposal

Do not dispose of discarded electrical appliances as unclassified urban waste. They should be handed over to an officially designated recycling center, which is beneficial for environmental protection.

## Warranty

Products that you buy directly from our **Green Lion** website or shop come with a 24-month warranty.

When you buy **Green Lion** products from any of our approved sellers, you only get a 12-month warranty. If you want to extend this warranty, go to our website at <https://www.greenlion.net/warranty> and fill out the form with your information. Don't forget to upload a picture of the product too. After we've checked and accepted your request, we'll send you an email to confirm that your product's warranty has been extended.

For more info, please check:  
<https://www.greenlion.net/warranty>

## Contact Us

If you have any questions about this Privacy Policy, please contact us at:

Website: <https://www.greenlion.net/>

Sales: [sales@greenlion.net](mailto:sales@greenlion.net)

Service Support: [Support@greenlion.net](mailto:Support@greenlion.net)

Telegram: [@greenlion\\_global](https://t.me/greenlion_global)

Instagram: [@greenlion\\_global](https://www.instagram.com/greenlion_global)