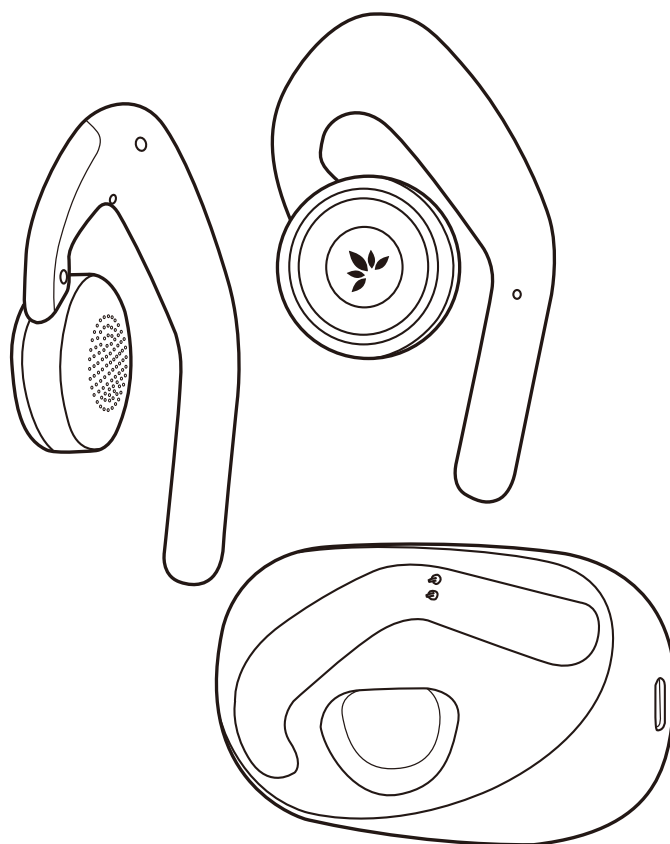


User Manual

True Wireless

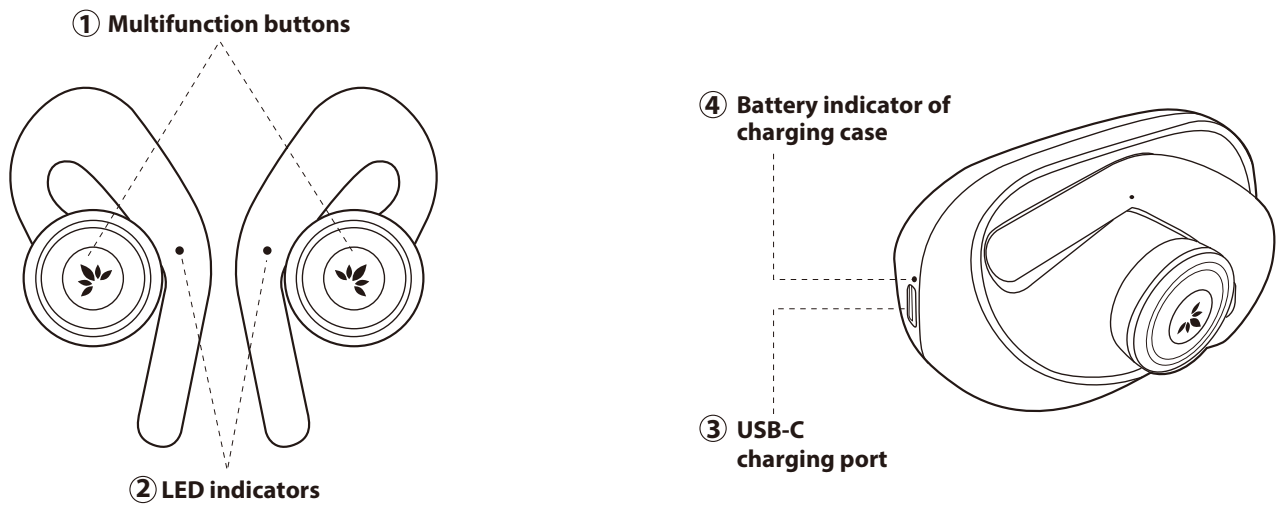
Earphones for TV

TWS116

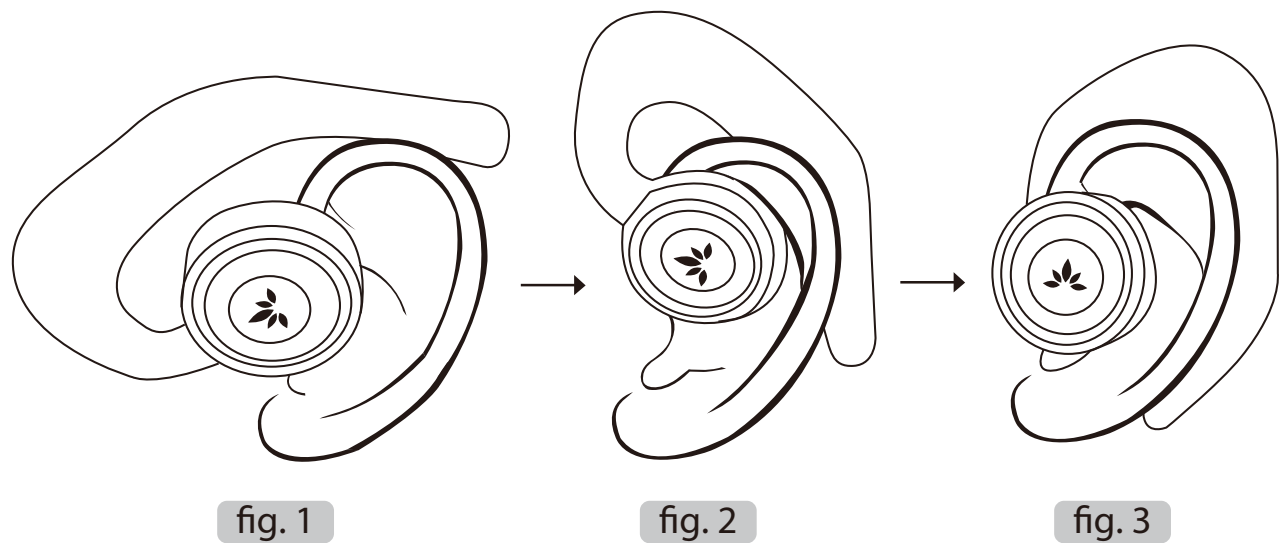


Product overview	1
How to wear	1
How to charge	1
Charging the earbuds	1
Charging the case	2
Basic operations	2
LED Indications	2
Earphones	2
Charging Case	3
How to pair	3
How to use with Mobile Device / PC	3
How to use with TV	4
Mono (Single) earbud use	4
How to Factory Reset	4
Support	5
FAQ	5
How to take care of your TWS116	5

Product overview

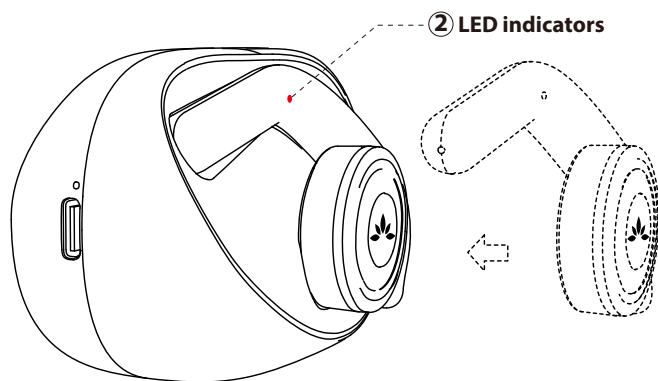


How to wear



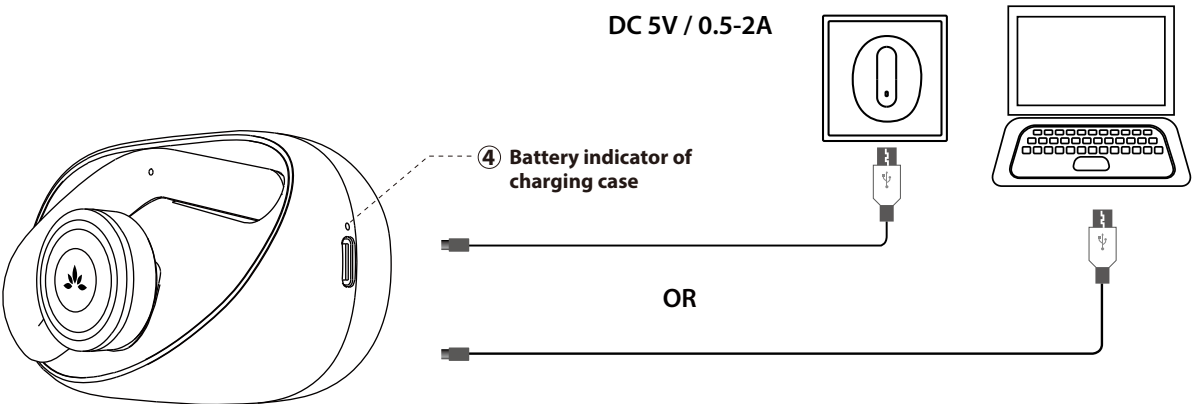
How to charge

Charging the earbuds



It takes about 2.5 hours to fully charge. ② will automatically turn off when the charging is complete.

Charging the case



④ will turn off automatically when fully charged.

Basic operations

Functions	Operations
Power On	Remove earphones from the charging case, they will power on automatically. OR from off status, long press ① for about 3 seconds
Power Off	Put the earphones back into the charging case and they will power off and begin charging. OR double click ① and hold for about 3s until the indicators dim out.
Pairing	Remove earphones from the case. OR from off status, press & hold ① for about 3s. One earphone will enter PAIRING MODE with the indicator flashing BLUE & RED.
Play / pause	Click ① once on either side
Volume up / down	Press & hold ① on the EITHER earphone
Previous / next track	Double-Click ① on EITHER earphone
Answer/end a call	Click ① once on EITHER earphone
Activate Siri / Google Assistant (Phone dependent)	Triple-Click ① on EITHER earphone

LED Indications

Earphones

Status	LED indicator	Voice prompt
Power on	Flash BLUE for about 1s	Power on
Power off	Flash RED for about 1s, then turns off	Power off
Ready to pair	One earphone flashes BLUE & RED	Pairing
Connected	Both earphones' LEDs flash BLUE once every 8s	Your headset is connected
Not connected with phone	One earphone flashes BLUE once every 8s, while the other flashes BLUE & RED	Disconnected
Earphones Not connected with each other	Both earphones flash BLUE & RED	NA
Low battery	Triple-Flash RED every 5 mins	Battery low
Charging	SOLID RED	NA
Fully charged	Both earphones' Indicators dim out	NA

Charging Case

Status	LED indicator
Battery low	SOLID BLUE
Charging	SOLID RED
Fully charged	Indicator dimmed out

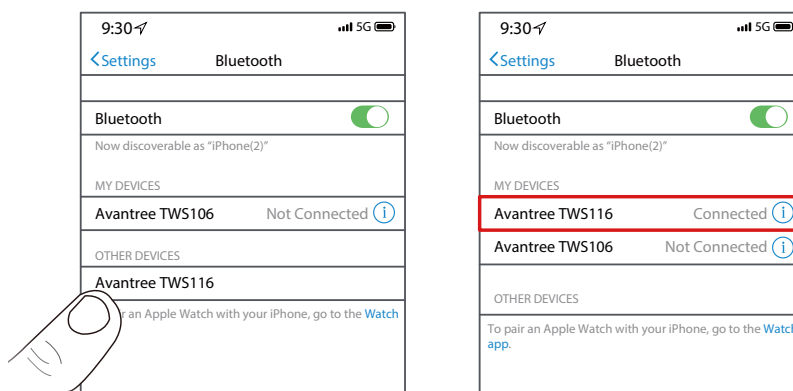
How to pair

How to use with Mobile Device / PC

For first use

Please put both earphones onto the charging case

1. Remove **BOTH** earphones to turn them ON.
2. Wait for the LED on ONE of the earphones to flash **BLUE & RED** - PAIRING MODE.
3. Search & select Avantree TWS116 from the Bluetooth menu on your device to connect.



4. Once connected, the flashing on both earphones will slow down significantly.

Notes:

For use with PC, please make sure that you set Avantree TWS116 as the default output and input device. If you're not sure how, please see the guides below:

[For Windows PC](#)

[For MacBook](#)

Reconnecting

The earphones will auto-reconnect to your most recently paired device the next time you remove them from the case. If they don't, please select "Avantree TWS116" on your device to manually reconnect.

Note: To connect with another device, please turn off Bluetooth on the previously connected device.

How to use with TV

For how to use with TV, please refer to this FAQ:


<https://avantree.com/product-support/BTHS-AS90P-BLK-X?k=AS90T#general-headphones-use-with-television>

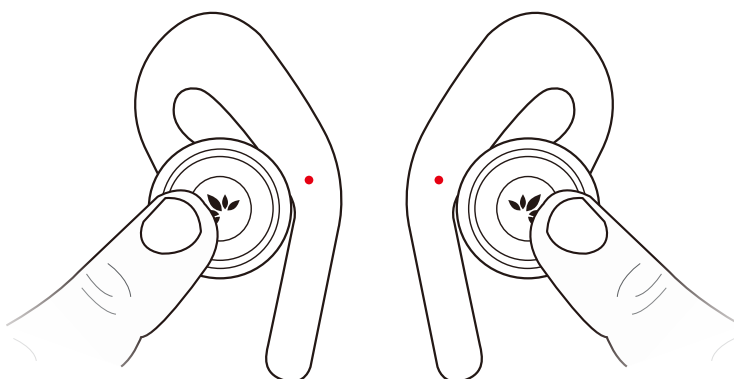
Mono (Single) earbud use


Either side can be used independently by itself.

1. Follow the section above and pair both earbuds to your device first.
2. Put both earbuds back into the charging case.
3. Take out the earbud you'd like to use, it will automatically reconnect to your device.

How to Factory Reset

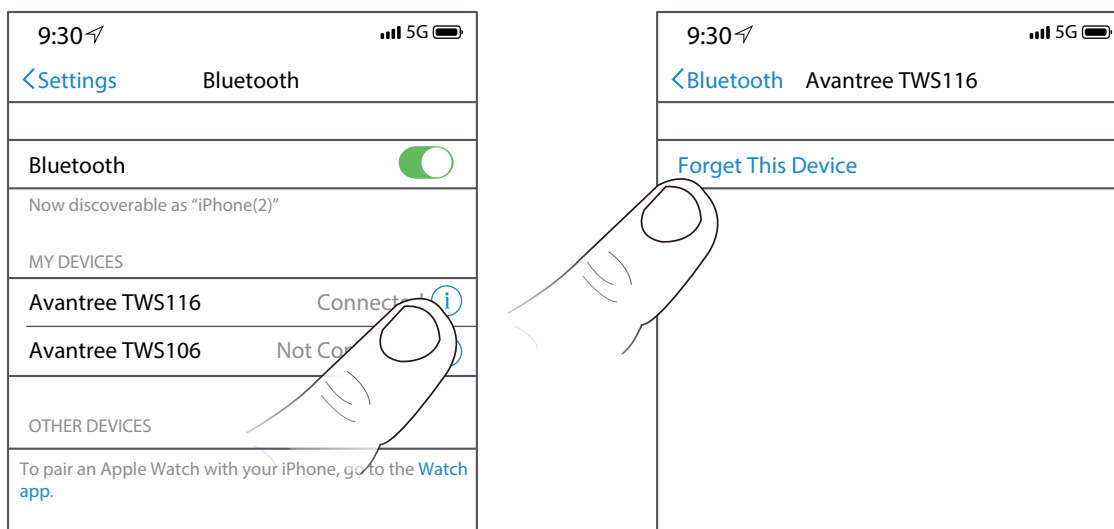
1. Power off both earphones manually - double click  and hold for about 3s until the LED lights up **RED** about 1s, then turns off.



2. Take one of the Earphones (either one), Press & hold  for about 10s. DO NOT release until you see the indicator turns **PINK**. It'll power off right after.

3. Put the Earphone back into the case.
 4. Take the other earphone out and do the same (steps 2 & 3). Now they've been reset.
 5. Connect two earphones - Remove both earphones from the case. LEDs on both earphones will flash **BLUE** & **RED** – indicating that they are connecting with each other.
 6. Once they've connected with each other, the indicator on one of the earphones will switch into flashing **BLUE**, while the continues flashing **BLUE** & **RED** alternately.
- Now you can pair with your device again.

Note: before pairing again, please delete Avantree TWS116 from your device's Bluetooth list.



Support

FAQ

View the FAQs on <https://avantree.com/product-support/BTHS-TWS116-BLK>

How to take care of your TWS116

- Always store the earbuds inside the charging case and make sure that they are safely protected.
- The TWS116 is designed to function optimally between the temperatures of 0°C and 40°C (32-100°F). Although it can and will function beyond this temperature range, performance may be impaired.
- Avoid storing the earbuds for extended periods of time without recharging them (max. three months.)
- The charging case is designed to charge using standard USB voltage (5v ± 0,25v). It is not recommended to charge this product using power supplies/sources with higher voltage.