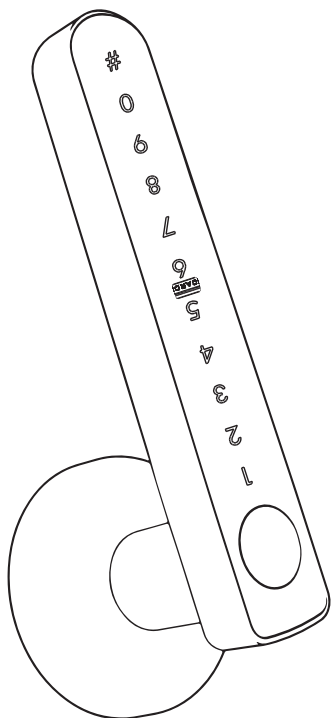


User Manual



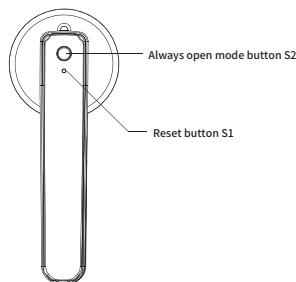
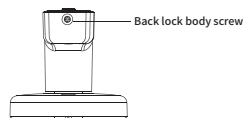
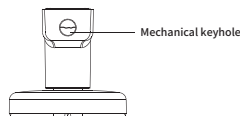
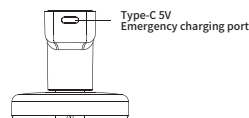
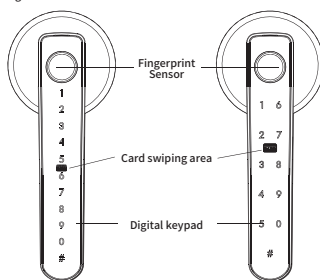
HL Series Smart Lock

Important: Please carefully read this manual before operation and retain it for future reference.

Front Handle

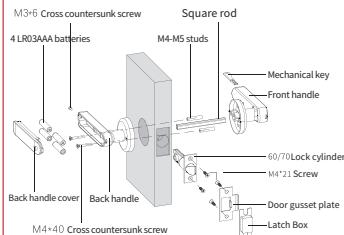
Single Row Touch Buttons

Double Row Touch Buttons



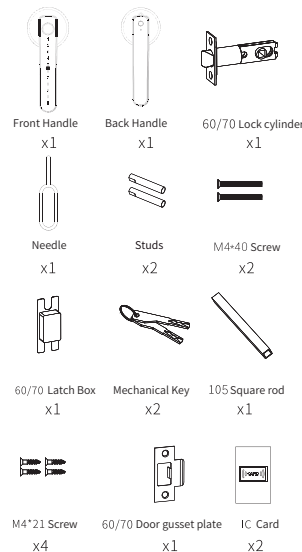
Back Handle

Door lock installation diagram

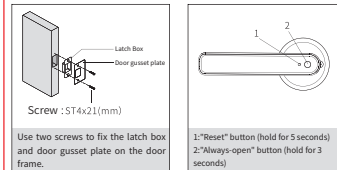


Tips (1) Use two self-tapping screws to firmly fix the 60/70 lock on the door; after the wire passes through the square rod hole, (2) Then pass the square rod through the square hole of the lock.

Accessories List

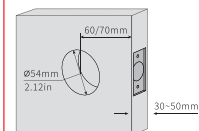


Tips Open the product package and check whether the above accessories are included.



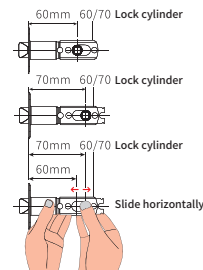
Measuring the size of the door

Ensure that the thickness of the door is between 30 - 50 mm, the diameter of the door - opening hole is $\phi 54$ mm, and measure the distance from the lock body to the door bolt back is 60/70 mm.

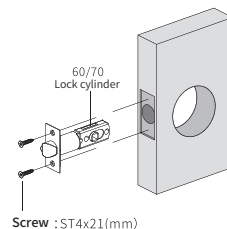


Tips (1) Applicable door thickness is 30-50mm. If the door thickness exceeds this range, please contact us for more information. (2) For doors 30-40mm thick, please use 28mm studs; for doors 41-50mm thick, please use 40mm studs.

Please install the door lock according to the following steps.



Adjust the backset (60/70 mm) of the lock body according to the requirements. When adjusting the backset, hold the square hole on the lock firmly with your hand. The shifting part must be pushed to the edge of the lock, and the front and back square holes must be in a horizontal state.



Fix the lock cylinder with two screws.

Product features and advantages

- You can use fingerprints, passwords, cards and keys to unlock;
- Multiple volume modes available, user-friendly operation;
- It has the function of preventing others from seeing the password;
- Automatically detect power level and provide early warning;
- All components are from internationally renowned brands with stable and reliable quality;
- The door lock modules are all waterproof, moisture-proof and mildew-proof;
- Door lock modules have undergone high and low temperature, vibration, aging and other tests to adapt to harsh environments.

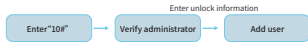
When no user is registered, any fingerprint or the initial password "123456" can unlock the smart lock. When a fingerprint or password is registered, unauthorized fingerprints and password attempts will no longer work. When no administrator is set, any fingerprint or the initial password "123456" can access add mode. When an administrator is registered, their verification is required to enter add mode and add new users.

Product technical parameters

Function	content	Detailed Description
Unlocking method	Fingerprint + Password + Card + Key	
Number of administrators	3 people	01-03
Number of users	Fingerprint, password, card (50 sets each)	Shared by fingerprint, card, and password
Fingerprint	100 sets	Fingerprints need to be entered 5 times (please enter from multiple angles)
Card	100 sets	The card only needs to be entered once
Password	100 sets	The password needs to be entered twice within "4" seconds to confirm (the first and second passwords must be the same length)
Virtual password length	≤24	This product has a virtual anti-passing password. You can enter garbled characters before and after the registered password.
Low voltage alarm	4.5 V	When the voltage is lower than 4.5V, the red indicator light will flash 5 times continuously, and the lock can still be unlocked.
Supply voltage	6V	New battery voltage when fully charged
Emergency power supply	5V DC	USB interface
Working temperature	-25°C~65°C	
Working humidity	20%~90% RH	

Detailed operation of lock end

1.Add user



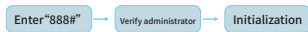
1. When verifying the administrator, if no administrator is registered, any fingerprint or the initial password "123456" can be used to enter and add the administrator/user.
2. The first three users are administrators, and the fourth or more users are regular users Connect users;
3. The valid length for a numeric password is 6 digits. If the password exceeds this length, registration will fail;
4. Fingerprints need to be entered 5 times, passwords 2 times consecutively, and cards entered once. A successful input is indicated by a green light;
5. After successful registration, the system will automatically enter sleep mode;
6. The maximum number of users is 200.

2. Volume setting



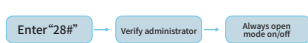
1. If the system has not registered an administrator, after entering "21#", enter the initial password or any fingerprint to set the volume;
2. In the volume setting interface, only keys 1, 2, and 3 are valid for selection. Pressing other keys will be invalid and the volume setting mode will pop up;
3. After other numbers are deleted by the administrator, the system will automatically replace their numbers when they are entered again.

3. System initialization



1. After entering "888#" and verifying the administrator, the system will be initialized directly;
2. After initialization, anyone can unlock the door without a password; after setting up an administrator, the person needs to be entered to unlock the door.

4. Always open mode selection



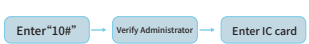
1. If the system has no registered administrator, after entering "28#", the always open mode will be turned on/off directly;
2. In the normally open mode, the normally open mode will be automatically closed after the password is entered.

5. Switch/button



1. Short press the reset switch (s1): Add administrator/user function. If the system has already registered an administrator, the administrator needs to be verified before adding;
2. Long press the reset switch (s1): Force the system into initialization mode, without verifying the administrator, directly initialize the system;
3. Normally open button (s2): Short press the normally open button s2 to quickly turn on/off the normally open mode. To turn on the normally open mode, the administrator needs to be verified;
4. Long press for 5 seconds, any time shorter than 5 seconds will be considered a short press.

6. Enter IC card



1. First, register as an administrator and set up according to "1. Add User Operation";
2. After entering "10 #", the administrator needs to verify it, and ordinary users cannot perform this operation;
3. After successful verification by the administrator, place the IC card in the "swipe card area" for sensing. When a "ding" sound is heard, it indicates that the IC card has been successfully entered;
4. Perform the "2" and "3" operations again to enter the second IC card.

APP download (optional)

1. Please download the "tuya" app from the App store/Play store or scan the QR code on the right to download the software;
2. Please ensure that the device is powered on normally and operate without registering an administrator.

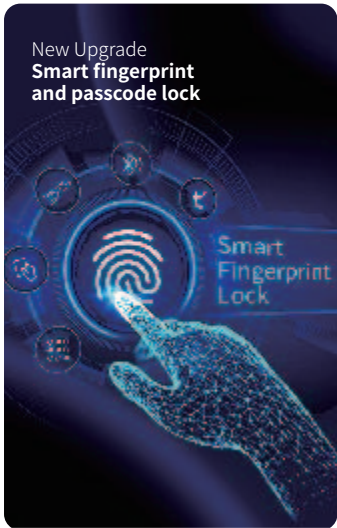


Video tutorial

Scan the QR code with your phone to watch the product installation video.



Installation video



New Upgrade Smart fingerprint and passcode lock

FCC Statement
This device complies with part 15 of the FCC rules. Operation is subject to the following two conditions: (1) This device may not cause harmful interference, and (2) This device must accept any interference received, including interference that may cause undesired operation. Changes or modifications not expressly approved by the party responsible for compliance could void the user's authority to operate the equipment. NOTE: This equipment has been tested and found to comply with the limits for a Class B digital device, pursuant to part 15 of the FCC Rules. These limits are designed to provide reasonable protection against harmful interference in a residential installation. This equipment generates uses and can radiate radio frequency energy and, if not installed and used in accordance with the instructions, may cause harmful interference to radio communications. However, there is no guarantee that interference will not occur in a particular installation. If this equipment does cause harmful interference to radio or television reception, which can be determined by turning the equipment off and on, the user is encouraged to try to correct the interference by one or more of the following measures:
•Reorient or relocate the receiving antenna.
•Increase the separation between the equipment and receiver.
•Connect the equipment into an outlet on a circuit different from that to which the receiver is connected.
•Consult the dealer or an experienced radio/TV technician for help. The device has been evaluated to meet general RF exposure requirement. The device can be used in portable exposure condition without restriction.

Empowering Your Entry with Intelligent Security