



Installation plan Commercial dryer PDR 914/514 EL Electrically heated

To avoid the risk of accidents or damage to the machine, it is **essential** to read these instructions before it is installed and used for the first time.

en-GB

Contents

Installation notes	3
Installation requirements	3
Electrical connection	3
Supply air/exhaust air.....	4
PDR 914/514, electrically heated	5
Dimensions.....	5
Installation	6
Set up (Standard/Miele base).....	7
Set up (Concrete platform/Offshore)	8
Technical data	9
Voltage variants/electrical data	9
Voltage variant 1	9
Voltage variant 2.....	9
Waste air.....	9
Air intake.....	9
Equipotential bonding (option)	9
Peak load energy management (option).....	10
Machine data.....	10
Mounting variants.....	10
Mounting without base.....	10
Mounting on concrete platform.....	11
Mounting on Miele base.....	11
Optional extras	11
Miele base (option)	11
Concrete platform (on site).....	11

Installation requirements

The tumble dryer must only be installed and commissioned by Miele Customer Service Department or an authorised dealer.

- ▶ The tumble dryer must be installed in accordance with all relevant regulations and standards.
- ▶ The dryer must only be operated in a room that has sufficient ventilation and which is frost-free.

Electrical connection

The electrical connection must be established by a qualified electrician.

- ▶ The electrical connection may only be made to an electrical system provided in accordance with all appropriate local and national legislation, regulations and guidelines. Please also observe the regulations set out by your insurance provider and energy supplier, accident prevention regulations, as well as recognised codes of practice.
- ▶ Reliable and safe operation of this tumble dryer is only ensured if it has been connected to the mains electricity supply.

The required supply voltage, power rating and fuse rating can be found on the data plate on the tumble dryer. Ensure that the supply voltage matches the voltage quoted on the data plate before establishing the electrical connection to the tumble dryer.

Connection to a supply voltage other than the one quoted on the data plate can damage the tumble dryer if the voltage is too high.

- ▶ If more than one voltage is specified on the data plate, the tumble dryer can be converted for connection to the relevant input voltage. This conversion must be performed by the Miele Customer Service Department or by an authorised dealer. During the conversion, the wiring instructions given on the wiring diagram must be followed.

The tumble dryer can either be hard-wired or connected using a plug-and-socket connection in accordance with IEC 60309-1. For a hard-wired connection, an all-pole isolation device must be available at the installation site.

An isolation device is a switch which ensures a contact opening of more than 3 mm. These include circuit breakers, fuses and contactors (IEC/EN 60947).

If the mains supply cannot be permanently disconnected, the isolation device (including plug and socket) must be safeguarded against being switched on either unintentionally or without authorisation.

Tip: We recommend connecting the tumble dryer to the power supply via a plug and socket so that it is easier to conduct electrical safety checks (e.g. during maintenance or repair work).

- ▶ The tumble dryer must not be connected to devices such as timers which would switch it off automatically.

If it is necessary to install a residual current device (RCD) in accordance with local regulations, a residual current device **type B** (sensitive to universal current) must be used.

Installation notes

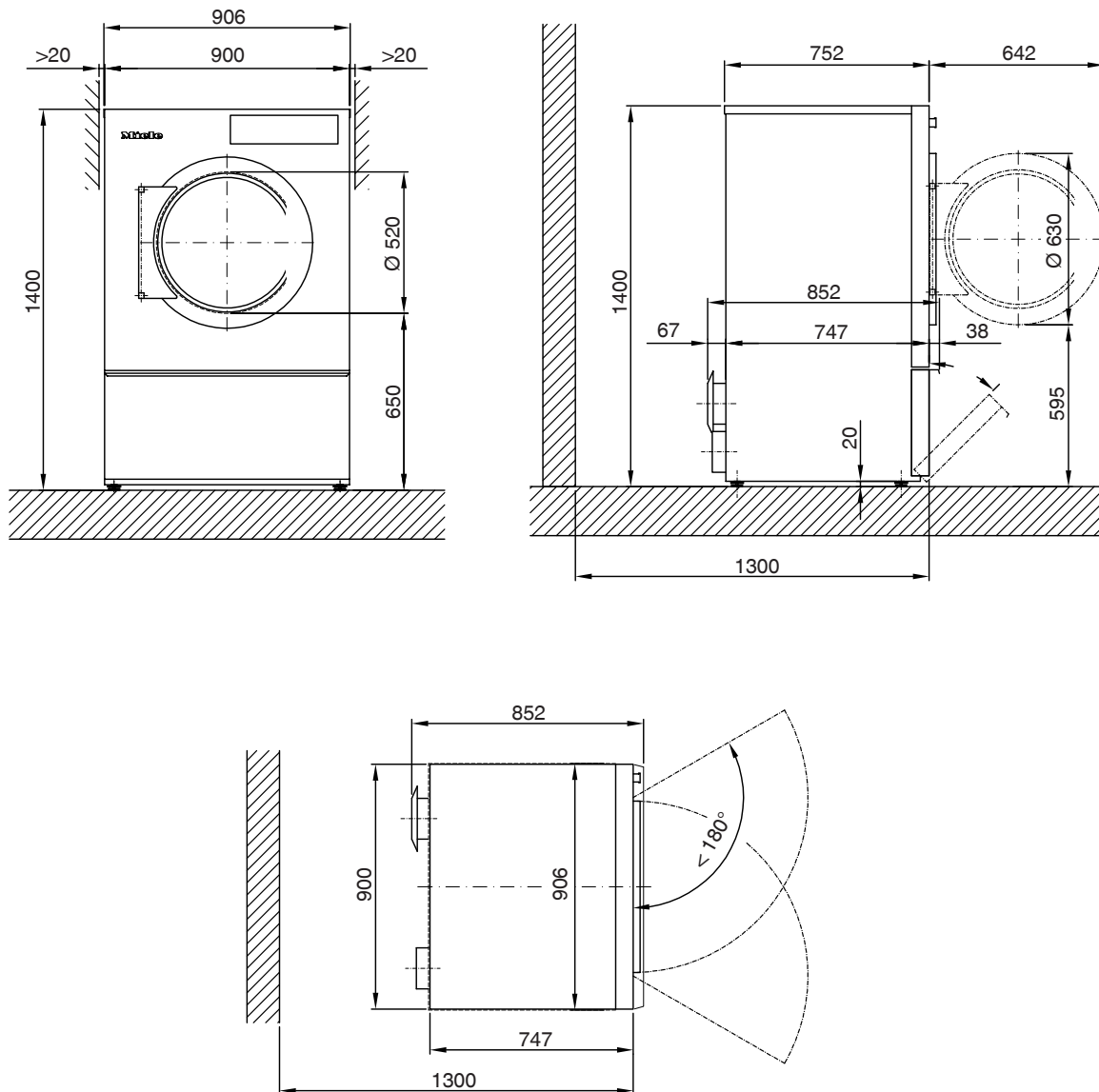
► Equipotential bonding with a good contact connection should be carried out in accordance with local and national installation regulations. Equipotential bonding with a leakage current of >10 mA should be carried out. Accessories required for equipotential bonding (washers and nuts) are not supplied with the machine.

Supply air/exhaust air

The tumble dryer may only be operated when the ducting has been connected and the room is sufficiently ventilated (see installation instructions).

► Accessory parts may only be fitted when expressly approved by Miele. If other parts are used, warranty, performance and product liability claims will be invalidated.

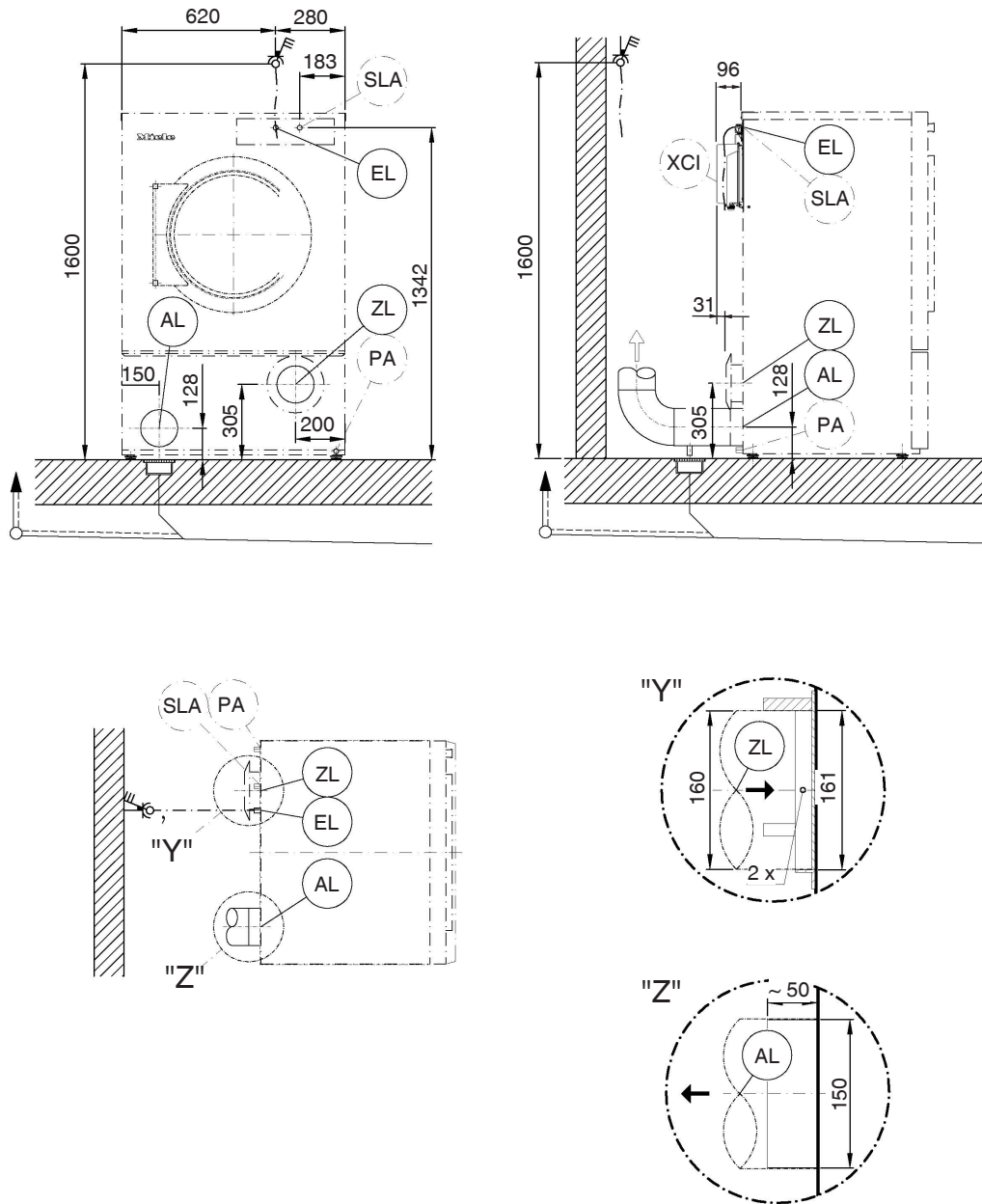
Dimensions



Measurements in millimeters

PDR 914/514, electrically heated

Installation



Measurements in millimeters

EL Electrical connection

AL Vented

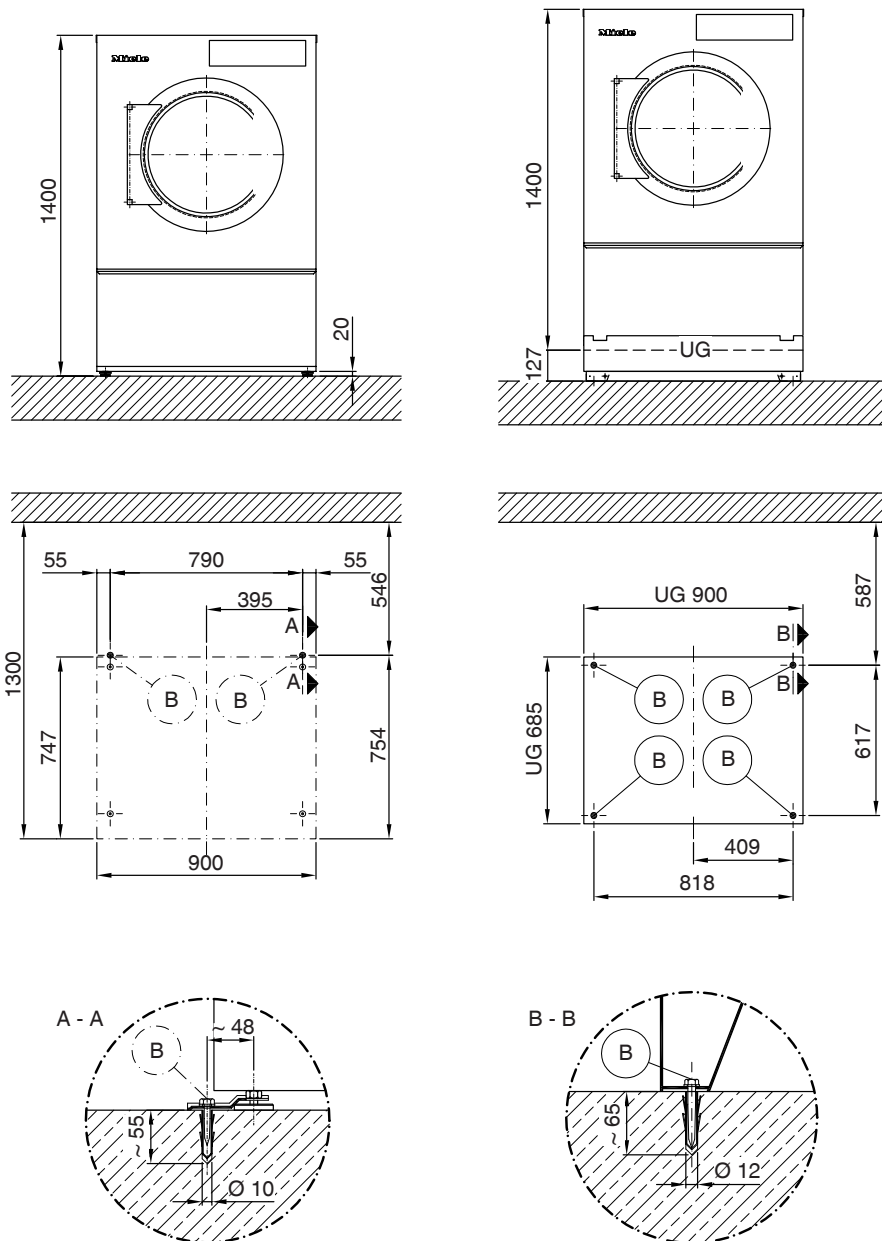
ZL Air intake

PA Equipotential bonding (option)

SLA Peak load energy management (option)

XCI XCI-/Connector-Box (option)

Set up (Standard/Miele base)

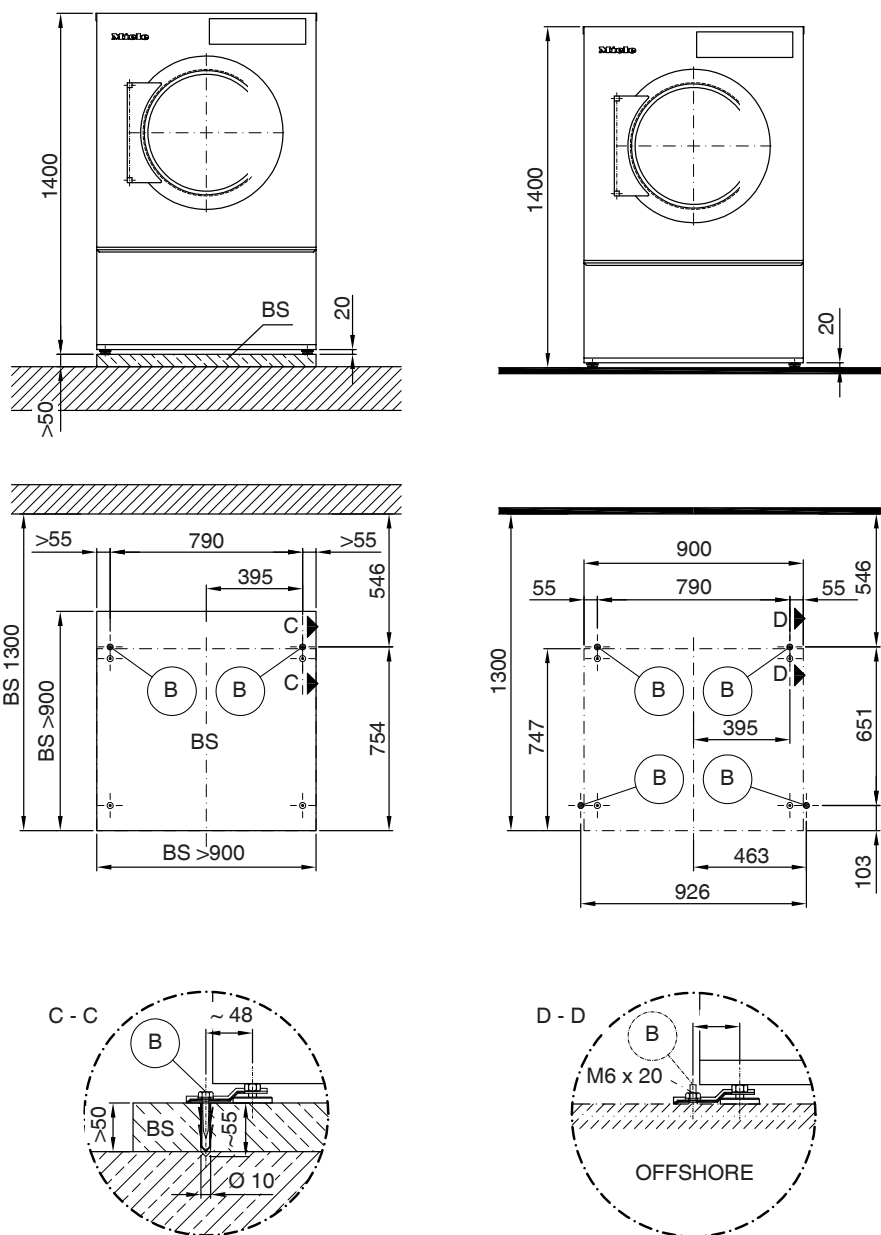


UG Miele base

B Fittings/drill hole

PDR 914/514, electrically heated

Set up (Concrete platform/Offshore)



Measurements in millimeters

BS Concrete platform

B Fittings/drill hole

Voltage variants/electrical data

Voltage variant 1

	Standard connection
Voltage	3N AC 400 V
Frequency	50/60 Hz
Total connected load	14.1 kW
Fuse rating (on-site)	3×25 A
Connection cable, min. cross-section	5×2.5 mm ²
Cable gland	M25

Voltage variant 2

	Standard connection
Voltage	3 AC 230 V
Frequency	50/60 Hz
Total connected load	14.1 kW
Fuse rating (on-site)	3×35 A
Connection cable, min. cross-section	4×6 mm ²
Cable gland	M32

Waste air

Max. nominal air flow in vented mode (PDR 9xx only)	560 m ³ /h
Max. nominal air flow (PDR 5xx only)	440 m ³ /h
Max. permissible pressure loss	200 Pa
Connection on machine side (ext. diameter)	150 mm
Connection pipe provided on site (int. diameter)	150 mm
Max. temperature	80 °C
As relative humidity inside the vent ducting can be as high as 100%, suitable measures must be taken to prevent a backflow of condensate into the machine	

Air intake

Standard connection: Air intake from installation site

Unobstructed air intake into room recommended: 531 cm²
(corresponding to 3 times the vent cross-section of machine).

A sufficient supply of fresh air should be ensured to replace the air extracted.

Alternative connection: Ducted air intake (from outside building)

Connector on machine (int. diameter)	161 mm
Connection pipe provided on site (ext. diameter)	160 mm

Lid removal exposes live components. For safety reasons, the pipe connected for central air intake should be at least 900 mm long and secured using two screws.

Equipotential bonding (option)

Connection with male thread	10×35 mm
Washers and nut	M10
Accessories to be ordered separately	

Technical data

Peak load energy management (option)

Control contact voltage	AC 230 V
Connection cable, min. cross-section	5×1.5 mm ²
Connection via a flexible supply lead with a separate isolator is recommended. The isolator should be visible and easily accessible after machine installation.	

Machine data

Overall machine width	906 mm
Overall machine height	1400 mm
Overall machine depth	852 mm
Niche width	1250 mm
Recommended distance between front of machine and the wall	1300 mm
Minimum distance between rear edge of lid and the wall	500 mm
Packaging width	1090 mm
Packaging height	1526 mm
Packaging depth	938 mm
Maximum gross volume	1560.2 l
Maximum gross weight	171.7 kg
Maximum net weight	160.4 kg
Max. floor load in operation	1779 N
Exhaust air spigot diameter	150 mm
Drum diameter	850 mm
Drum opening diameter	520 mm
Drum depth	480 mm
Drum volume	250 l
Door opening diameter	520 mm
Max. door opening angle	180°
Emission sound pressure level	51 dB(A) re 20 µPa
Sound power level	62
Heat dissipation rate to installation site	3.9 MJ/h
Permitted ambient temperature	2–40 °C

Mounting variants

Mounting without base

	Quantity	Screw size
Clamps	2	
Wood screws DIN 571 (Ø×length)	2	6×40 mm
Dowel (Ø×length)	2	10×50 mm
The machine should be bolted to the floor. Fixing materials for a floating screed floor are to be provided on site.		

Mounting on concrete platform

	Quantity	Screw size
Clamps	2	
Wood screws DIN 571 (Ø×length)	2	6×40 mm
Dowel (Ø×length)	2	10×50 mm
Machine must be bolted to the floor . Fixing materials for a floating screed floor are to be provided on site.		

Mounting on Miele base

	Quantity	Screw size
Clamps	4	
Wood screws DIN 571 (Ø×length)	4	8×65 mm
Dowel (Ø×length)	4	12×60 mm
Machine must be bolted to the floor . Fixing materials for a floating screed floor are to be provided on site.		

Optional extras

Miele base (option)

Width	900 mm
Height	127 mm
Depth	685 mm

Concrete platform (on site)

Minimum width	900 mm
Recommended height	100 mm
Minimum height	50 mm
Minimum depth	900 mm
Quality and density of concrete must comply with load. Concrete platform must be firmly secured to floor.	

United Kingdom

Miele Co. Ltd., Fairacres, Marcham Road
Abingdon, Oxon, OX14 1TW
Professional Sales, Tel: 0845 365 6608
E-mail: professional@miele.co.uk
Internet: www.miele.co.uk/professional

Australia

Miele Australia Pty. Ltd.
ACN 005 635 398, ABN 96 005 635 398
1 Gilbert Park Drive, Knoxfield, VIC 3180
Tel: 1300 731 411
Internet: www.miele.com.au/professional
E-mail: sales@miele-professional.com.au

China Mainland

Miele Electrical Appliances Co., Ltd.
1-3 Floor, No. 82 Shi Men Yi Road
Jing' an District, 200040 Shanghai, PRC
Tel: +86 21 6157 3500, Fax: +86 21 6157 3511
E-mail: info@miele.cn, Internet: www.miele.cn

Hong Kong, China

Miele (Hong Kong) Ltd.
41/F - 4101, Manhattan Place
23 Wang Tai Road, Kowloon Bay, Hong Kong
Tel: (852) 2610 1025, Fax: (852) 3579 1404
Email: customerservices@miele.com.hk
Website: www.miele.hk

India

Miele India Pvt. Ltd.
1st Floor, Copia Corporate Suites,
Commercial Plot 9, Mathura Road, Jasola,
New Delhi - 110025
E-mail: customercare@miele.in, Website: www.miele.in

Ireland

Miele Ireland Ltd.
2024 Bianconi Ave., Citywest Business Campus, Dublin 24
Tel: (01) 461 07 10, Fax: (01) 461 07 97
E-Mail: info@miele.ie, Internet: www.miele.ie

Malaysia

Miele Sdn Bhd
Suite 12-2, Level 12
Menara Sapura Kencana Petroleum
Solaris Dutamas No. 1, Jalan Dutamas 1
50480 Kuala Lumpur, Malaysia
Phone: +603-6209-0288
Fax: +603-6205-3768

New Zealand

Miele New Zealand Limited
IRD 98 463 631
8 College Hill
Freemans Bay, Auckland 1011, NZ
Tel: 0800 464 353
Internet: www.miele.com.au/professional
E-mail: sales@miele-professional.com.au

Singapore

Miele Pte. Ltd.
29 Media Circle, #11-04 ALICE@Mediapolis
Singapore 138565
Tel: +65 6735 1191, Fax: +65 6735 1161
E-Mail: info@miele.com.sg
Internet: www.miele.sg

South Africa

Miele (Pty) Ltd
63 Peter Place, Bryanston 2194
P.O. Box 69434, Bryanston 2021
Tel: (011) 875 9000, Fax: (011) 875 9035
E-mail: info@miele.co.za
Internet: www.miele.co.za

United Arab Emirates

Miele Appliances Ltd.
Showroom 1, Eiffel 1 Building
Sheikh Zayed Road, Umm Al Sheif
P.O. Box 114782 - Dubai
Tel. +971 4 3044 999, Fax. +971 4 3418 852
800-MIELE (64353)
E-Mail: info@miele.ae, Website: www.miele.ae



Manufacturer: Miele & Cie. KG
Carl-Miele-Straße 29, 33332 Gütersloh, Germany