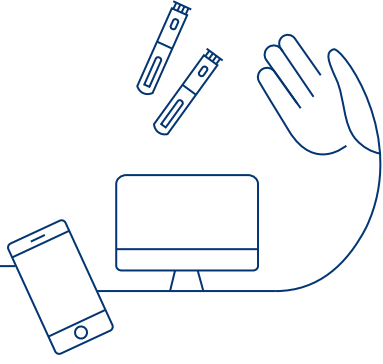


How do I connect NovoPen® 6 or NovoPen Echo® Plus with my Android or iOS smartphone?



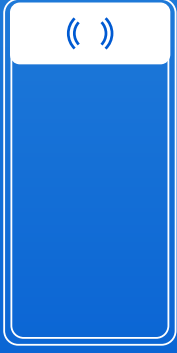
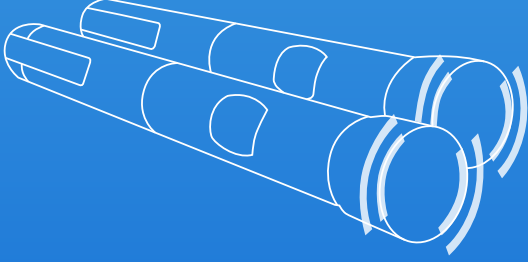
What does your smartphone need to connect?

Your smartphone needs to be compatible with NovoPen® 6 and NovoPen Echo® Plus.

Having trouble? Check:

- ✓ Does your smartphone have a NFC (Near Field Communication) spot?
- ✓ Does the app manufacturer support your smartphone and OS? Check out their compatibility list.
- ✓ Have you updated to the latest version of the app?

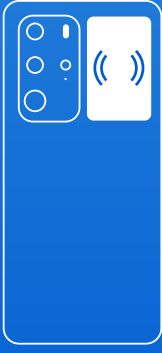
The location of the NFC spot varies depending on the smartphone model. It's important that you hold your pen in the correct position next to your phone. Here are some examples:



iPhone X, XS, XS Max, XR, 11, 11 Pro Max, Pro, SE, 12, 13, 14



Galaxy S7 Edge, S8, S8+, S9, S10, S20, S21



Huawei P10 Lite, P20, P30 Pro, P40 Pro

If you are unsure, please refer to your smartphone instruction manual or contact your provider to confirm the NFC spot location.

Tips to help you connect:

- Keep the phone on a flat surface and stand the pen on top of it (for iOS phones).
- Put the pen in the middle of the NFC spot.
- Check if the dose counter is at 0. It is not possible to transfer the dose log when an injection is in progress.
- Ensure that there are no other NFC devices, such as credit or travel cards, close by when you scan the pen.
- If your dose log is full, it may take more than 10 seconds to transfer all data. Moving the NovoPen® outside of the range of the NFC spot could cause the dose log transfer to be incomplete so keep the pen in the middle of the NFC spot throughout.
- If the pen has run out of battery (shows “End” or blank display) it is not possible to transfer the dose log and the pen may need to be replaced. You can still use the pen to make injections.

Currently supported operating systems and apps:

Some smartphones that are compatible with NovoPen® 6 and NovoPen Echo® Plus might not be compatible with some manufacturer's apps. Check your app manufacturer's compatibility list:

- The smartphone models indicated herein are not an exhaustive list, but it is for reference purposes only. NovoPen® 6 and NovoPen Echo® Plus may be compatible with most of the smartphones with Android version 8 and above and iOS version 13 and above.
- NovoPen® 6 and NovoPen Echo® Plus are not consistently compatible with iPhone 7 and Samsung Galaxy S6, it is recommended to use other smartphones.

	Models	Operating systems
Apple	iPhone 8, 8 Plus, X, XR, XS, XS Max, XR, 11, 11 Pro, 11 Pro Max, Pro, SE, 12, 12 Mini, 12 Pro, 13, 13 mini, 13 Pro, 13 Pro Max , SE 2, iPhone 14, iPhone 14Pro	iOS 13: 1.1, .2, .2.3, .3, .3.1, .4, .4.1, .5, .6, .6.1, .7 iOS 14: 0.1, 0.2, 2.1, .3, .4.1, .4.2, .5.1, .6, .7, .7.1, .8 iOS 15: 0, .0.2, .1, .2 iOS 16: 0, .6 iOS 17:0
ASUS	ROG Phone 5	Android: 11
AXON	Axon 20	Android: 10
Google	Pixel, Pixel 2, Pixel 2 XL, Pixel 3, Pixel 5 , Pixel 6, Pixel 7a, Pixel 7	Android: 8.1.0, 10, 13 , 14
Huawei	P: P10 Lite, P20, P30, P30 Pro, P40, P40 Pro, P40 Pro+, P50, P50 Pro, P Smart 2019, P8 Lite, P40 Pro Mate: 20, 20X, 40, 40E, 40 Pro, 30, 10 Lite Honor: 10, X10 Max, 20, 20 Pro, V20, V30, 30, 30 Pro, 30 Pro+ Nova: 5 Pro, 6, 7, 7 Pro, 9s, Y70	Android: 8, 9 10, 13, 14 HarmonyOS: 2.0.0, 2.0.1
iQOO	iQOO 3, iQOO 5, Neo5, 5 Pro, Neo 5 Vitality, Z1	Android: 10, 11
Lenovo	K12 Pro	Android: 10
LG	Nexus 5X	Android: 8
Meizu	Meizu 17, Meizu 17 Pro, Meizu 18, Meizu 18 Pro	Android: 10, 11
Mi	Mi: 8, 9, 10, 10 Lite, 10X Pro, Zoom 11 Lite, 11 Pro, 11 Ultra, Civi Redmi: 10 Pro, Note 8 Pro, K30i, K30s, K30 Pro Mix 4	Android: 10, 11, 12
Motorola	Edge s	Android: 11
ONEPLUS	9, 7T Pro, 8, 8T, 8 Pro, 9 Pro, 9 R , 10T 5G, 11 5G, Nord 3 5G	Android: 10, 11, 13, 14
OPPO	Reno3 Pro, Reno4, Reno4 Pro, Find X3 Pro, Ace 2, Reno Ace, Reno, Find X2 pro	Android: 9, 10, 11, 13, 14
realme	GT Neo, X50, X2 Pro, Find X3	Android: 10, 11
Samsung	Galaxy S7 Edge, S8, S8+, S9, S10, S10+, S20, Galaxy S20 FE, Galaxy S21, Galaxy S23, Galaxy A41, Galaxy A50s, Galaxy A51, Galaxy A52, Galaxy A53, Galaxy A 54, Galaxy A2 Core, Galaxy A7, Galaxy A70s, Galaxy A71, Galaxy A90, Galaxy Note 10+, Galaxy Note 8, Galaxy A20, Galaxy Grand Prime Plus, Galaxy A10, Galaxy Z Flip 5	Android: 8, 9, 10, 11, 12 , 13, 14
Smartisan OS	R2	Android: 10
Sony	Xperia 10 II	Android: 10
vivo	X: 27 Pro, 50, 50 Pro Plus, 50 Pro, 60, 60 Pro, 70, 70 Pro, 70 Pro+ S: 9	Android: 9, 10, 11

Our compatibility testing ensures that all the smartphones and operating systems listed above work together with NovoPen Echo® Plus and NovoPen® 6. However, compatibility issues may arise due to testing or specification limits.

Which apps can I use?

To find out which different diabetes apps are compatible in your country, please contact your local Novo Nordisk customer service team.

NovoPen® 6 and NovoPen Echo® Plus are registered trademarks of Novo Nordisk A/S.