

[AT A GLANCE](#)

[WHAT'S IN THE BOX](#)

[CHARGING THE CAMERA](#)

[SETTING UP](#)

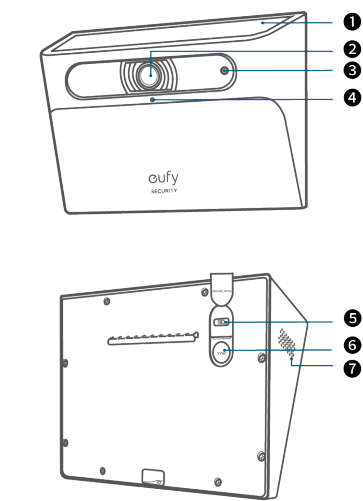
[MOUNTING](#)

[Select a Location](#)

[Location Height](#)

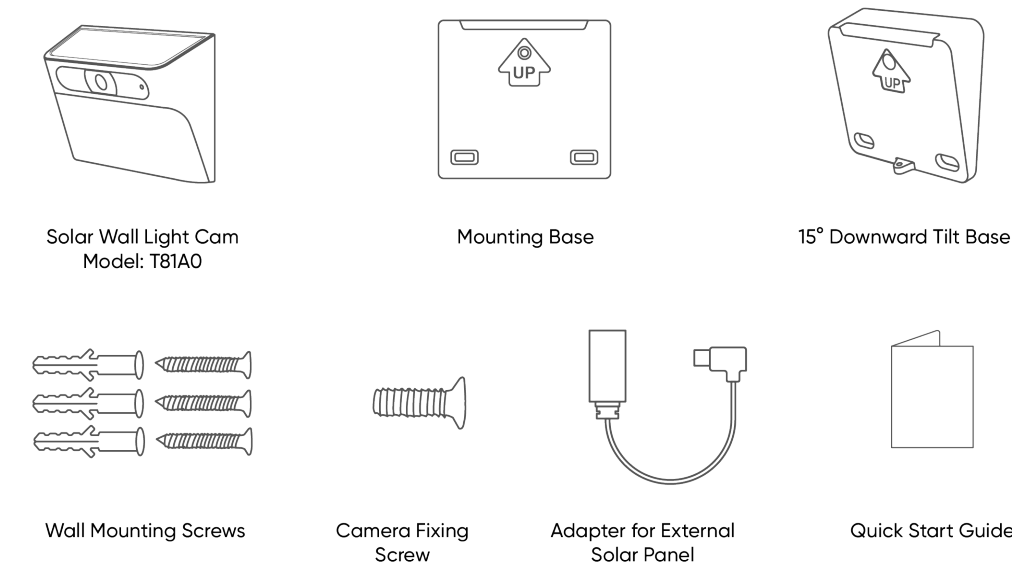
[Mount the Camera](#)

**AT A GLANCE**

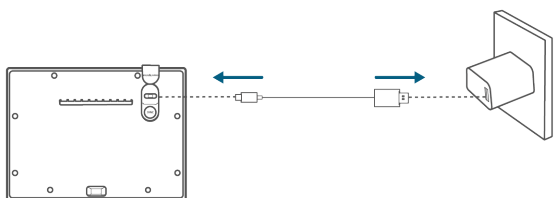


❶	Solar Panel
❷	Camera
❸	LED Indicator
❹	Microphone
❺	USB-C Charging Port
❻	SYNC Button
❼	Speaker

**WHAT'S IN THE BOX**



**CHARGING THE CAMERA**



Note: A standard USB-C charging cable (not included) and AC adapter (not included) are required for charging. Fully charge before first use.

## SETTING UP

1. Download and install the eufy Security app, and sign up for an account.

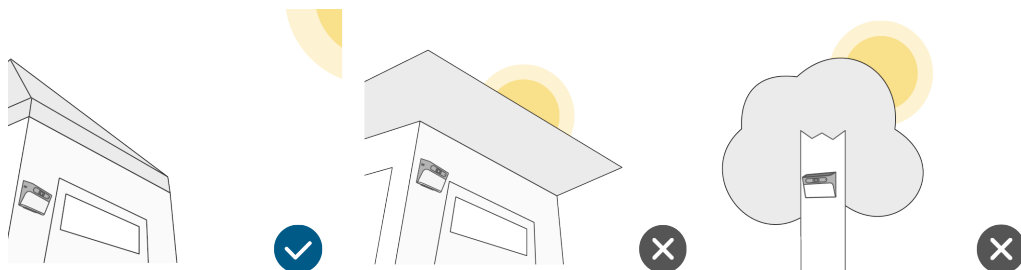


2. Follow the in-app instructions to add your Solar Wall Light Cam.

## MOUNTING

### Select a Location

The camera can be mounted on a wall or similar surface. Select a location where the solar panel will not be blocked by obstacles such as a roof or leaves.

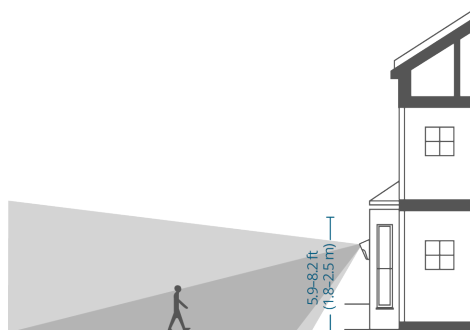


- If it isn't possible to completely avoid the solar panel being blocked by obstacles, try to allow as much exposure to sunlight as possible.
- Pay attention to battery management via the app to make sure your device receives enough power to continue operating. If your Solar Wall Light Cam does not receive enough power to continue operating, it can be charged manually, or an additional solar panel (with adapter for external solar panel) can be connected and placed in a location with sufficient sunlight to stay powered.

### Location Height

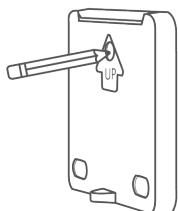
We recommend mounting 1.8 m – 2.5 m (5.9 ft – 8.2 ft) above ground level.

- To maximize solar panel efficiency and the camera field of view, select a location where the camera receives plenty of sunlight.



### Mount the Camera

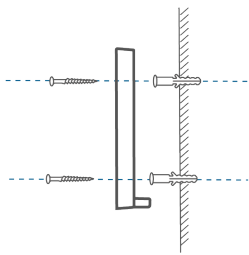
1. Mark the mounting points on the wall or surface where drilling will be required, using the mounting base as a template.



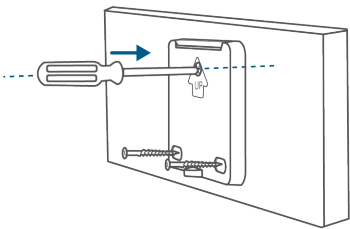
- You can use the 15° downward tilt base instead.

2. Drill holes in the wall or surface, then insert the expansion anchors into the holes.

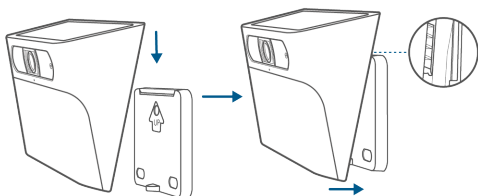
💡 • This step applies if mounting onto hard surfaces such as brick or concrete. For soft surfaces such as wood, skip this step.



3. Screw the mounting base onto the wall.



4. Slot the camera onto the mounting base and make sure it is attached securely.



5. Insert and tighten the camera fixing screw at the bottom of the camera.

