



CC-SG Virtual Appliance Evaluation

Quick Setup Guide

CommandCenter Secure Gateway is Raritan's management software platform engineered to consolidate secure access and control of IT devices.





Evaluation Version Limitations

The evaluation version of CommandCenter Secure Gateway provides full functionality, with several exceptions:

- Limit of 16 nodes.
- Limit of 1 NIC. IP Isolation Mode and IP Failover Mode not supported.
- Clusters, Neighborhoods, and Upgrades not supported.

Prerequisites

The CC-SG virtual appliance evaluation can be installed on:

1. Free VMware Workstation Player
2. VMware ESXi
3. Hyper-V

► *For all installations, you need:*

- 10GB datastore
- 4GB free memory

► *To install on VMware Workstation Player, you need:*

- VMware Player
 - Available for free download from VMware's website, www.vmware.com
- CommandCenter Secure Gateway Virtual Appliance Evaluation zipped .OVF file downloaded to local client.
 - Go to <https://www.raritan.com/landing/free-ccsg-download> to register, then download the version for VMware Workstation Player.

► *To install on VMware ESX or ESXi, you need:*

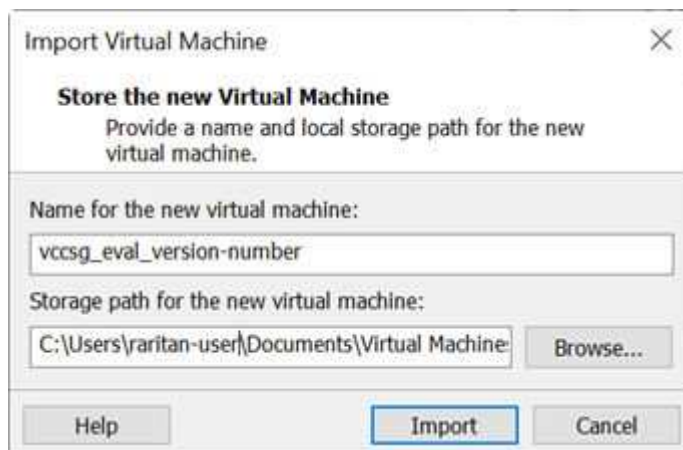
- VMware ESXi.
- CommandCenter Secure Gateway Virtual Appliance Evaluation zipped .OVF file downloaded to local client.
 - Go to <https://www.raritan.com/landing/free-ccsg-download> to register, then download the version for ESXi.

► *To install on Hyper-V, you need:*

- Hyper-V feature enabled on a Windows client.
- Access to Hyper-V Manager.
- CommandCenter Secure Gateway Virtual Appliance Evaluation zipped .VHDX file downloaded to local client.
 - Go to <https://www.raritan.com/landing/free-ccsg-download> to register, then download the version for Hyper-V.

Install the Virtual Appliance Evaluation on VMware® Workstation Player

1. Unzip the Virtual Appliance Evaluation file you downloaded from www.raritan.com. The vccsg_eval_<release number>.OVF file is included in the .ZIP.
2. Log in to VMware Workstation Player.
3. Choose Player > File > Open.
4. Locate the .OVF file and select it. Click Open.
5. The virtual machine name and directory appear. Click Import.



A status bar indicates the progress of the import process.

6. When complete, the virtual machine appears and is ready to launch. Click Play Virtual Machine.

If a Software Updates message appears, click Remind Me Later.

7. Wait several minutes while the virtual appliance starts. The local console opens with a login prompt. See [Log in to Diagnostic Console to Set CC-SG IP Address](#) (on page 7) for next steps.

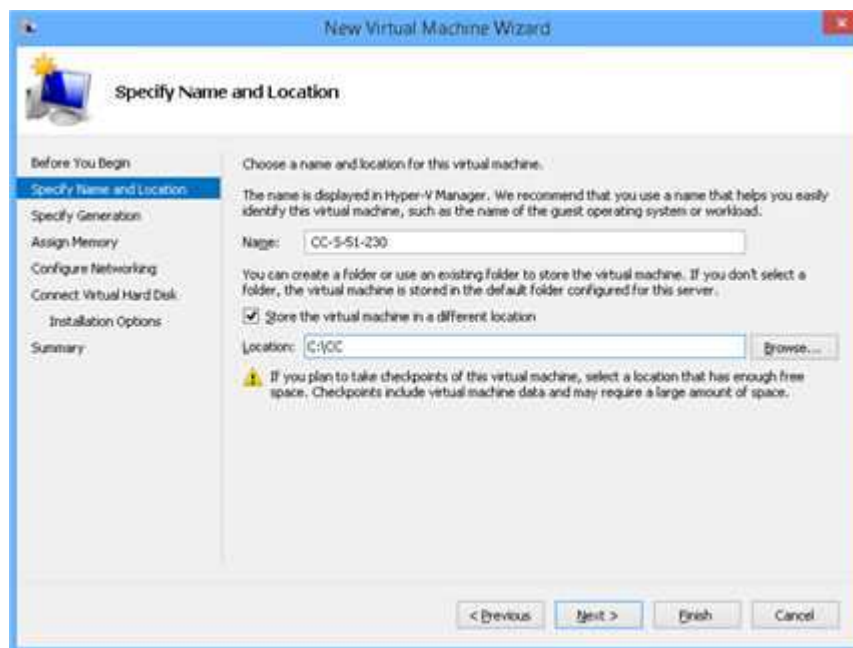
Install the Virtual Appliance Evaluation on VMware ESXi

1. Unzip the Virtual Appliance Evaluation file you downloaded from www.raritan.com. The vccsg_eval_<release number>.OVF file is included in the .ZIP.
2. Connect to the ESXi from your client computer using vSphere.
3. Log in as a user that has permission to create, start, and stop virtual machines.
4. Choose File > Deploy OVF Template.
5. Select Deploy From File then click Browse to go to the directory where you unzipped the files.
6. Select the .OVF file. Click Next.
7. Details about the virtual machine display. You can change the default name of the virtual machine. Click Next.
8. Select the inventory location. Click Next.
9. Select the Host where you want to deploy the CommandCenter Secure Gateway. Click Next.
10. If you selected a cluster, select the specific host. Click Next.
11. Choose the datastore where all files will be stored. Make sure the datastore has 10GB free. Select thin provisioned if the datastore supports it. Click Next.
12. Choose the network your CC-SG is being deployed on. Click Next.

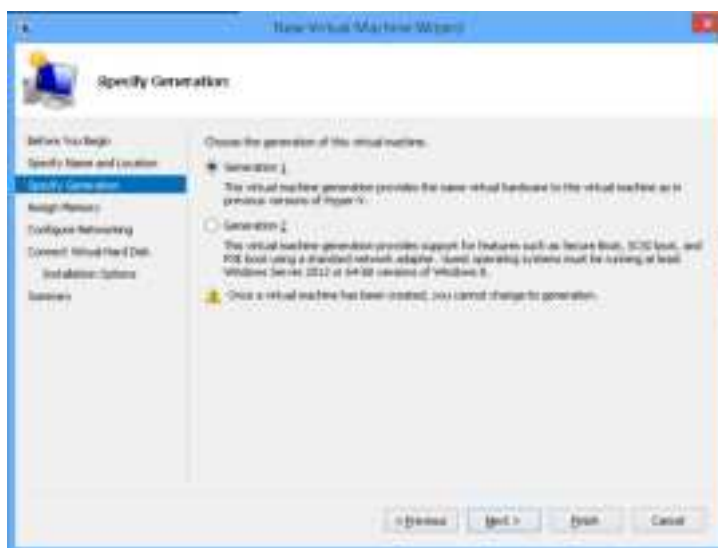
13. View the summary then click Finish. Wait several minutes while the virtual machine is created.
14. Power on the virtual machine.
15. Open the Console tab to access the Diagnostic Console of CC-SG. See [Log in to Diagnostic Console to Set CC-SG IP Address](#) (on page 7) for next steps.

Install the Virtual Appliance on Hyper-V

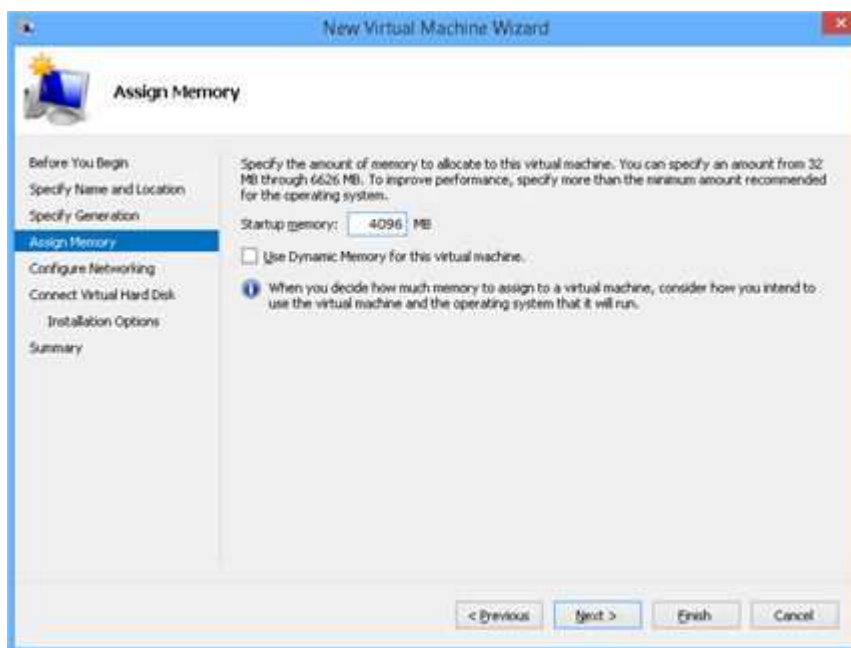
1. Extract the VHDF file from the CC-SG installation zip file.
2. In Hyper-V Manager, make sure your local machine is selected in the left panel, then choose Action > New > Virtual Machine... to open the New Virtual Machine wizard.
3. In the Before you Begin page, click Next.
4. Enter a name for the VM, and choose a location to store the VM. Click Next.



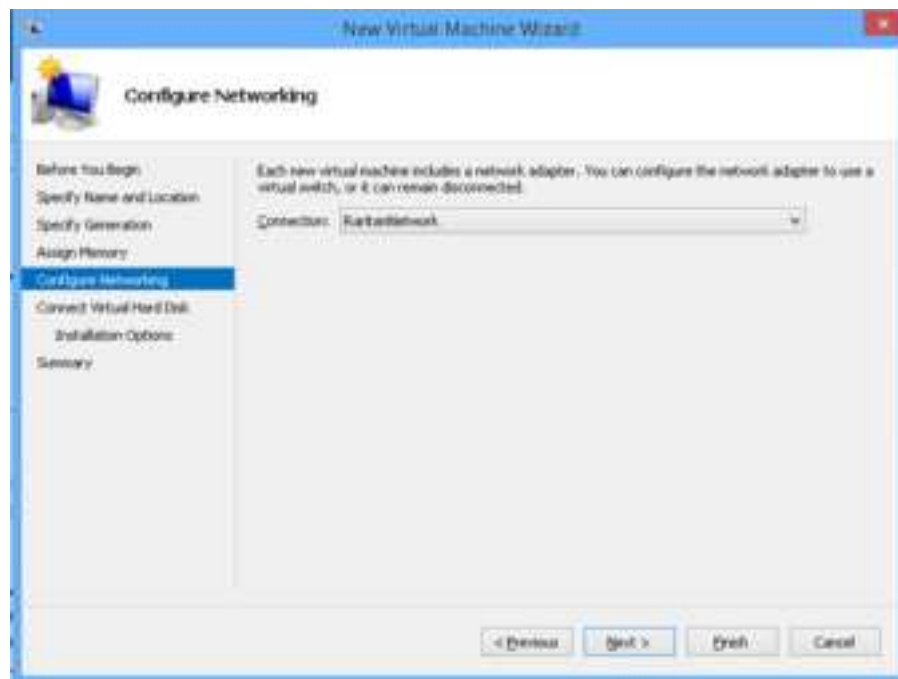
5. In the Specify Generation page, select Generation 1 only. CC-SG does not support Generation 2. Click Next.



6. In the Assign Memory page, change the Startup Memory to 4GB (4096MB). Make sure that "Use Dynamic Memory for this virtual machine" is NOT selected. Click Next.



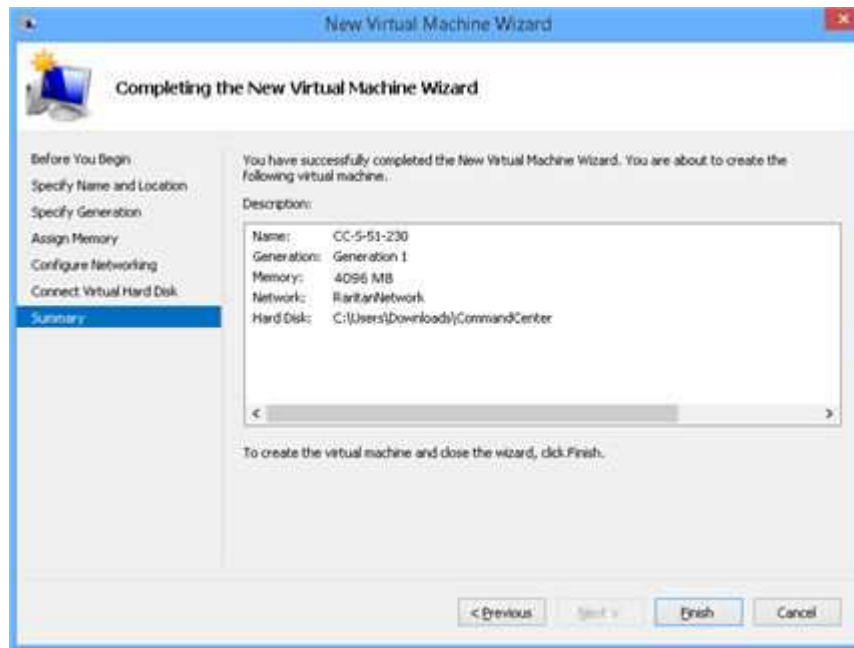
7. In the Configure Networking page, select the network configuration in your client environment. Click Next.



8. In the Connect Virtual Hard Disk page, select "Use an existing virtual hard disk", then click Browse to select the .VHDX file extracted earlier. Click Next.



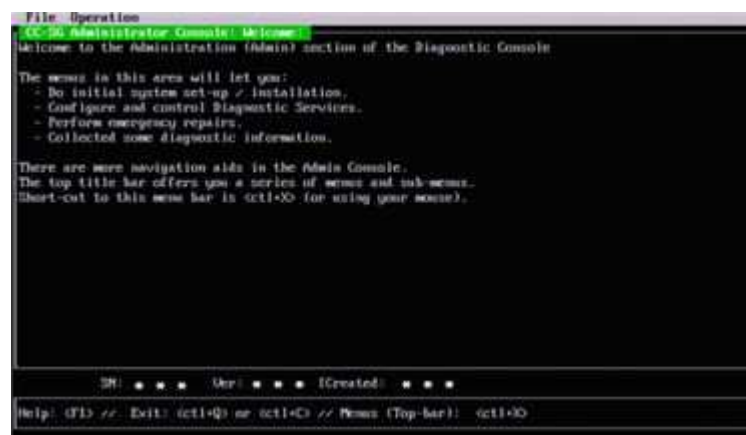
9. A summary of the VM displays. Click Finish.



10. Start the new VM, and launch the console. For next steps, go to [Log in to Diagnostic Console to Set CC-SG IP Address](#) (on page 7).

Log in to Diagnostic Console to Set CC-SG IP Address

1. Log in as *admin/raritan*. Usernames and passwords are case-sensitive.
2. You will be prompted to change the local console password.
 - a. Type the default password (*raritan*) again.
 - b. Type and then confirm the new password.
3. Press CTRL+X when you see the Welcome screen.





4. Choose Operation > Network Interfaces > Network Interface Config. The Administrator Console appears.
5. In the Configuration field, select DHCP or Static. If you select Static, type a static IP address. If needed, specify DNS servers, netmask, and gateway address.
6. Select Save.

Default CC-SG Settings

IP Address: DHCP

Subnet Mask: 255.255.255.0

Username/Password: admin/raritan

Reboot the System After a DHCP Configuration

If you configured the CC-SG to use DHCP, you must reboot the system.

- In the local console, choose Operation > Admin > CC-SG System Reboot.

Log in to CC-SG

Once CC-SG has restarted, you can log in to CC-SG from a remote client.

1. Launch a supported browser and type the URL of the CC-SG: `https://<IP address>/admin`.
For example, `https://192.168.0.192/admin`.

Note: The default setting for browser connections is HTTPS/SSL encrypted.

2. When the security alert window appears, accept the connection.
3. You will be warned if you are using an unsupported Java Runtime Environment version. Follow the prompts to either download the correct version, or continue. The Login window appears.

Note: The client version is visible on the login page.

4. Type the default username (*admin*) and password (*raritan*) and click Login.

The CC-SG Admin Client opens. You are prompted to change your password. Strong passwords are enforced for *admin*.

Next Steps

After evaluating , you can create a backup file of your test configuration and restore it to a full-version CC-SG.

Additional Information

For more information about CommandCenter Secure Gateway and the entire Raritan product line, see Raritan's website (www.raritan.com). For technical issues, contact Raritan Technical Support. See the Contact Support page in the Support section on Raritan's website for technical support contact information worldwide. Raritan's products use code licensed under the GPL and LGPL. You can request a copy of the open source code. For details, see the Open Source Software Statement at (<https://www.raritan.com/about/legal-statements/open-source-software-statement/>) on Raritan's website.