

SAMSUNG

USER MANUAL

SM-R175

English (EU). 02/2020. Rev.1.0

www.samsung.com

Table of Contents

Basics

- 3 Read me first
- 4 About the Galaxy Buds+
- 5 Device layout and functions
- 8 Preparing the earbuds for use
- 10 Battery
- 16 Battery indicator lights identification

Using the earbuds

- 18 Connecting the earbuds to a mobile device
- 24 Wearing the earbuds
- 25 Using the touchpad
- 28 Using Bixby
- 29 Listening to music
- 30 Using the equaliser
- 31 Using call features
- 32 Using ambient sound mode

Galaxy Wearable App

- 34 Introduction
- 35 Connecting and disconnecting the earbuds
- 36 Viewing Galaxy Buds+ status and customising settings

Appendix

- 39 Troubleshooting
- 42 Updating the earbuds' software with the Galaxy Buds Manager on your computer
- 43 Managing the Galaxy Buds+
- 45 Restarting the earbuds
- 45 Coupling the earbuds
- 46 Removing the battery

Basics

Read me first

Please read this manual before using this device to ensure safe and proper use.

- Descriptions are based on the device's default settings.
- Some content may differ from your device depending on the region, model specifications, or device's software. Images may differ in appearance from the actual product. Content is subject to change without prior notice.
- Before using other mobile devices, make sure they are compatible with the device. Visit www.samsung.com to see the specifications of compatible mobile devices.
- Be careful to not get the device wet while using it. The device could malfunction if it is damaged by water. Do not wear the device during activities, such as showering or swimming. Doing so can damage the device.
- Modifying the device's operating system or installing softwares from unofficial sources may result in device malfunctions and data corruption or loss. These actions are violations of your Samsung licence agreement and will void your warranty.
- Some functions may not work as described in this manual depending on the maker and model of the mobile device you connect to the device.
- This product includes certain free/open source software. To see the instructions for viewing the open source licence, go to the Samsung website (opensource.samsung.com).

Instructional icons



Warning: situations that could cause injury to yourself or others



Caution: situations that could cause damage to your device or other equipment



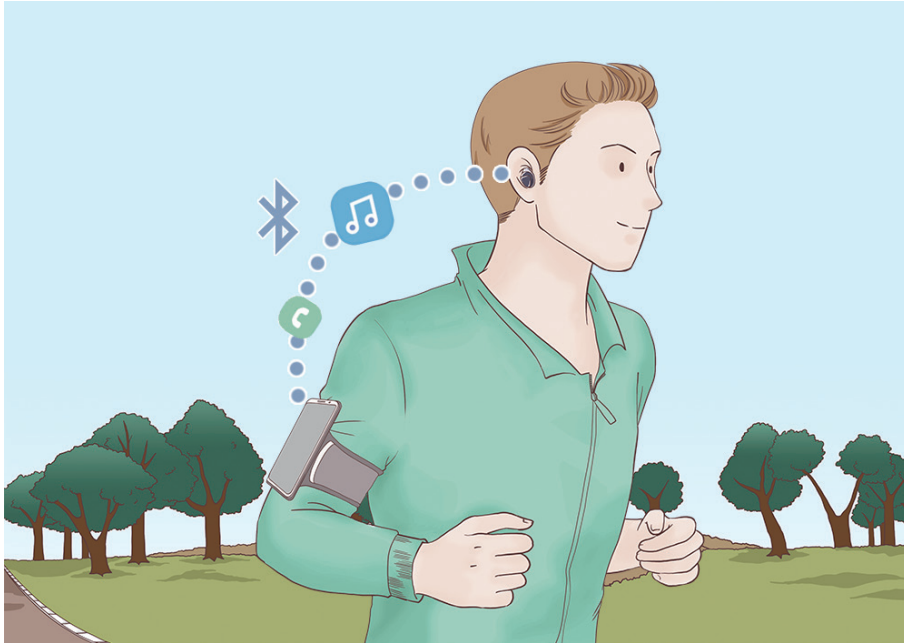
Notice: notes, usage tips, or additional information

About the Galaxy Buds+

Galaxy Buds+ are wireless earbuds which allow you to listen to music or answer incoming calls after connecting them to your device even while doing other activities, such as working out.



Do not wear the earbuds in high-traffic areas, such as roads or crosswalks. Doing so may result in accidents due to slowed reaction times.



Device layout and functions

Package contents

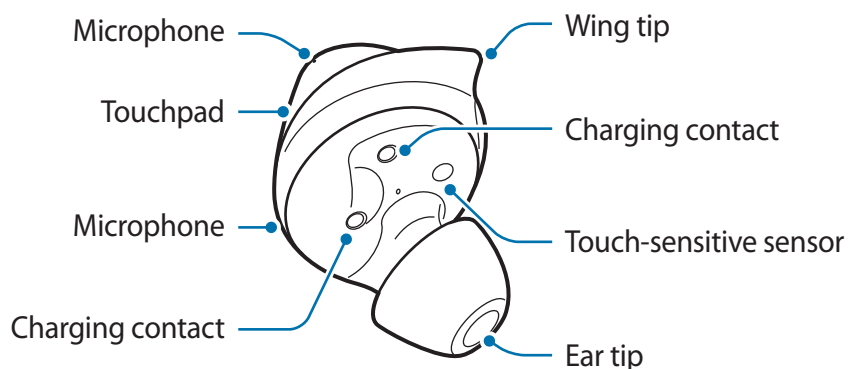
Refer to the quick start guide for package contents.



- The items supplied with the Galaxy Buds+, available accessories, and their images may vary depending on the region.
- The supplied items are designed only for the Galaxy Buds+ and may not be compatible with other devices.
- Appearances and specifications are subject to change without prior notice.
- You can purchase additional accessories from the Samsung website. Make sure they are compatible with the models before purchase.
- Use only Samsung-approved accessories. Using unapproved accessories may cause the performance problems and malfunctions that are not covered by the warranty.
- Availability of all accessories is subject to change depending entirely on manufacturing companies. For more information about available accessories, refer to the Samsung website.

Device layout

Earbud

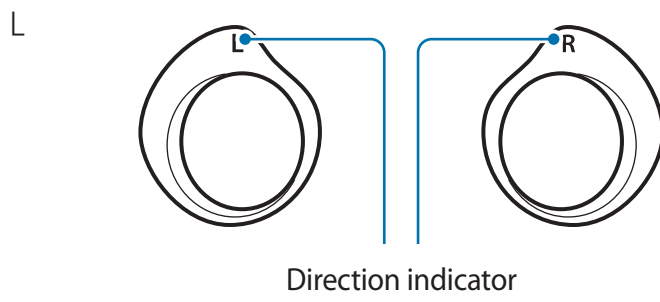
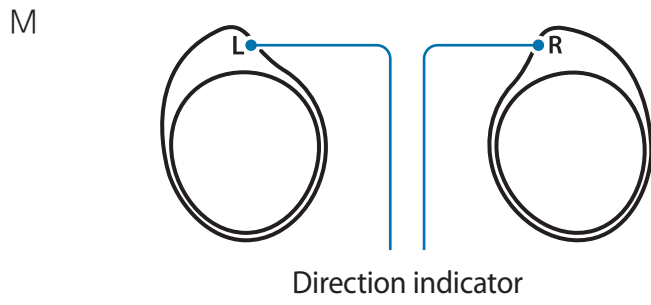
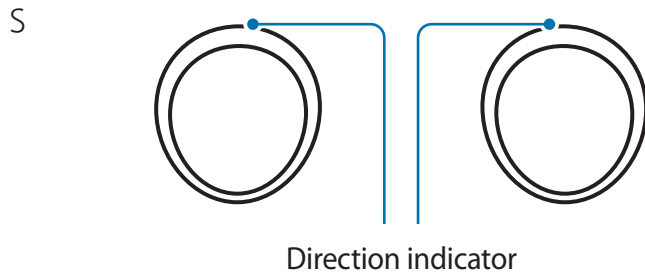


If you use the earbuds when they are broken, there may be a risk of injury. Use the earbuds only after they have been repaired at a Samsung Service Centre.

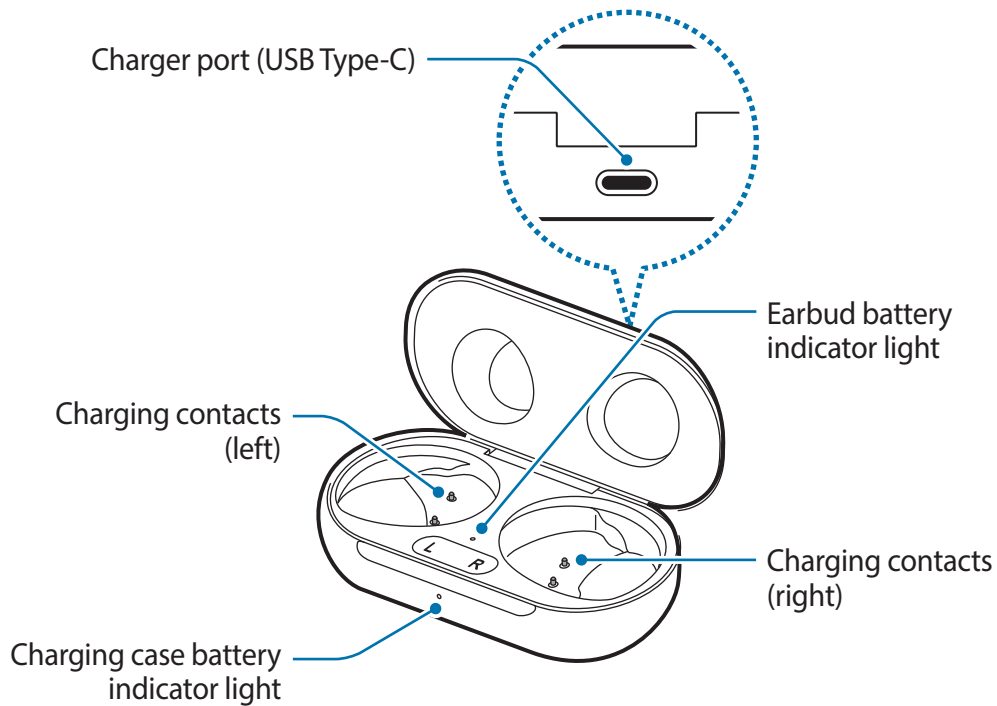


If foreign materials are placed on the touch-sensitive sensor, they may cause the sensor to malfunction. Before wearing the earbuds, clean the sensor first.

Wing tip



Charging case

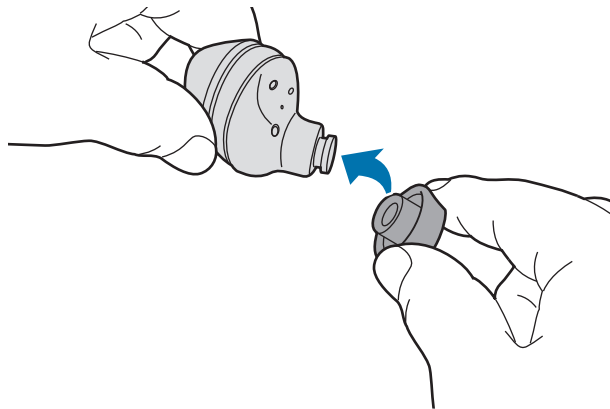



- If there is sweat or liquid on the charging contacts, corrosion may occur on the Galaxy Buds+. When there is sweat or liquid on the charging contacts or earbuds, clean them before inserting the earbuds in the charging case.
- Close the charging case when you store or charge the earbuds.

Preparing the earbuds for use

Attaching an ear tip to the earbud

- 1 Select the ear tip that fits your ear.
- 2 Cover the latch at the bottom of the earbud with the ear tip.

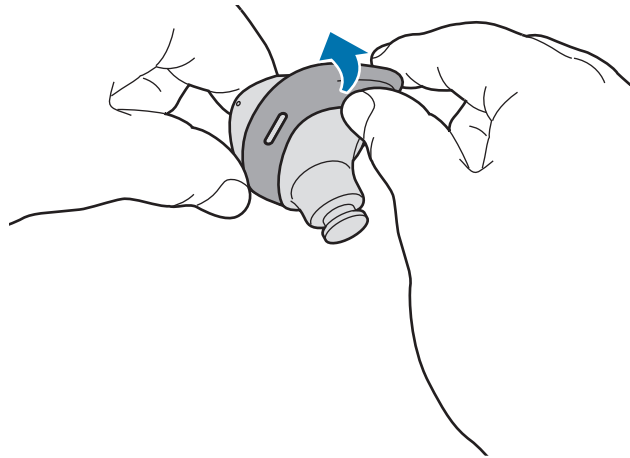



-  Do not put the earbuds in your ears without ear tips. Doing so may hurt your ears.
- Do not pull the ear tip excessively when you attach or detach it. The ear tip may tear.

- 3 Follow the same procedure for the opposite earbud.

Attaching a wing tip to the earbud

- 1 Select the wing tip that fits your ear.
- 2 Select the wing tip for the left or right ear.
- 3 Hook the wing tip's groove to earbud's fixation hook and cover the earbud with the wing tip.



- ⚠ Do not put the earbuds in your ears without wing tips. Doing so may hurt your ears.
 - Do not pull the wing tip excessively when you attach or detach it. The wing tip may tear.
-  Do not put the wing tips on the earbuds in the wrong direction. The earbuds will not fit in your ears properly.

- 4 Follow the same procedure for the opposite earbud.

Battery

Charging the battery

Fully charge the battery before using the earbuds for the first time or when they have been unused for extended periods. The earbuds will power on while charging. When you charge the battery for the first time or when the battery is completely discharged, it needs at least 10 minutes to start to work.

Check the direction of each earbud, insert them into the corresponding slots, and then connect the charger.

The charging case, which has a built-in battery, is charged along with the earbuds that are in the charging case when connected to the charger.

You can charge the earbuds by placing them into the charging case that has been already charged.



Use only Samsung-approved chargers and cables. Unapproved chargers or cables can cause the battery to explode or damage the Galaxy Buds+.

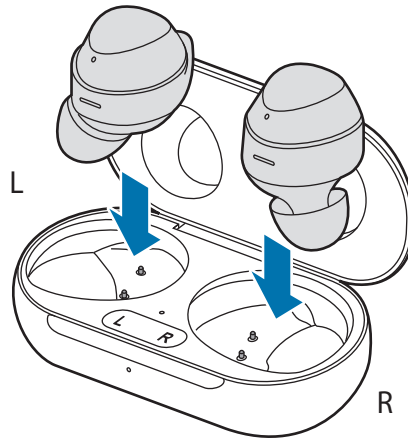


- Connecting the charger improperly may cause serious damage to the charging case. Any damage caused by misuse is not covered by the warranty.
- Use only USB Type-C cable supplied with the device. The charging case may be damaged if you use Micro USB cable.

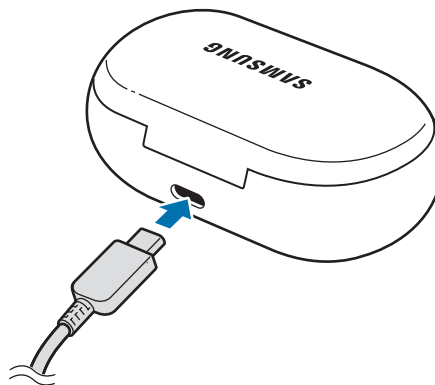



- Chargers are sold separately.
- To save energy, unplug the charger when not in use. The charger does not have a power switch, so you must unplug the charger from the electric socket when not in use to avoid wasting power. The charger should remain close to the electric socket and easily accessible while charging.
- You cannot use your earbuds' wireless features while charging the earbuds' batteries.
- Close the charging case when you store or charge the earbuds.
- If there is sweat or liquid on the charging contacts, corrosion may occur on the Galaxy Buds+. When there is sweat or liquid on the charging contacts or earbuds, clean them before inserting the earbuds in the charging case.
- Do not put the wing tips on the earbuds in the wrong direction. The earbuds will not be charged if they are not properly inserted into the charging case.

- 1 Open the charging case.
- 2 Check the direction of each earbud and correctly insert them into their corresponding slots in the charging case.



- 3 Close the charging case.
- 4 Connect the USB cable to the charger and then plug the USB cable into the charger port.



 Connecting the USB cable improperly may cause serious damage to the charging case. Any damage caused by misuse is not covered by the warranty.

- 5 Plug the charger into an electric socket.
The batteries of the earbuds and the charging case are charged simultaneously.
- 6 After fully charging, disconnect the charging case from the charger. First unplug the USB cable from the charging case and then unplug the charger from the electric socket.

Reducing the battery consumption

When you are not using the earbuds, store them in the charged charging case. The touch-sensitive sensor will continue to work while wearing the earbuds and reduce the usage time.

Battery charging tips and precautions

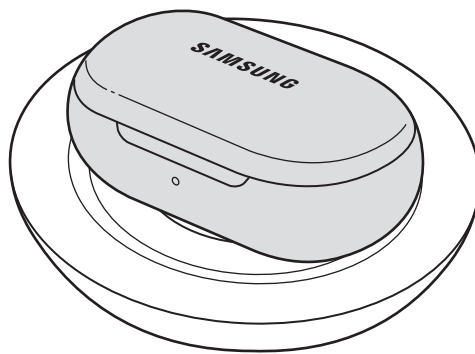
- If there is sweat or liquid on the charging contacts, corrosion may occur on the Galaxy Buds+. When there is sweat or liquid on the charging contacts or earbuds, clean them before inserting the earbuds in the charging case.
- Using a power source other than the charger, such as a computer, may result in a slower charging speed due to a lower electric current.
- While charging, the Galaxy Buds+ and the charger may heat up. This is normal and should not affect the Galaxy Buds+'s lifespan or performance. If the battery gets hotter than usual, the charger may stop charging. If this occurs during wireless charging, disconnect the Galaxy Buds+ from the charger to let them cool down, then charge the Galaxy Buds+ again later.
- If you charge the Galaxy Buds+ while the charger port is wet, the Galaxy Buds+ may be damaged. Thoroughly dry the charger port before charging the Galaxy Buds+.
- If the Galaxy Buds+ are not charging properly, take the Galaxy Buds+ and the charger to a Samsung Service Centre.
- Avoid bending the USB cable. Doing so may damage or reduce the lifespan of the USB cable. Never use a damaged USB cable.

Wireless charging

The charging case has a built-in wireless charging coil. You can charge the battery by using a wireless charger or another device that functions as a wireless charger.

Charging the battery with a wireless charger

- 1 Open the charging case.
- 2 Check the direction of each earbud and correctly insert them into their corresponding slots in the charging case.
- 3 Close the charging case.
- 4 Place the centre of the charging case's back on the centre of the wireless charger.



- 5 After fully charging, disconnect the charging case from the wireless charger.



Precautions for wireless charging

Do not place the charging case on the wireless charger when conductive materials, such as metal objects and magnets, are placed between the charging case and the wireless charger.

The Galaxy Buds+ may not charge properly or may overheat, or the charging case may be damaged.



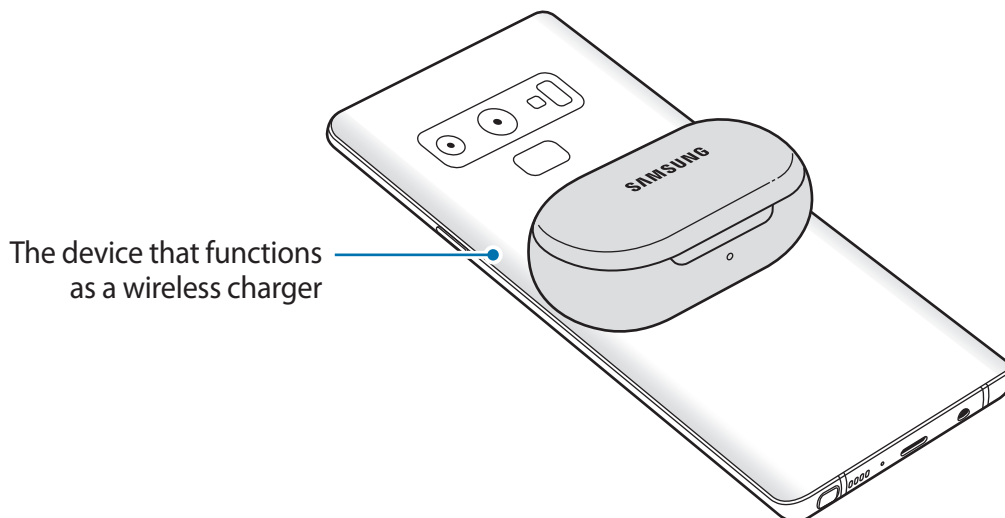
Use Samsung-approved wireless chargers. If you use other wireless chargers, the battery may not charge properly.

Charging the battery using Wireless PowerShare

- 1 Open the charging case.
- 2 Check the direction of each earbud and correctly insert them into their corresponding slots in the charging case.
- 3 Close the charging case.
- 4 Place the centre of the charging case's back on the device that functions as a wireless charger.



The location of the wireless charging coil may vary by device. Adjust the device and the charging case to make a strong connection.



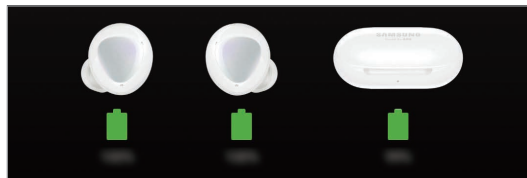
5 After fully charging, disconnect the charging case from the device that functions as a wireless charger.



- To charge properly, do not move or use either the device that functions as a wireless charger or the charging case while charging.
- The power charged to the Galaxy Buds+ may be less than the amount shared to them by the device that functions as a wireless charger.
- If you charge the Galaxy Buds+ while charging the device that functions as a wireless charger, the charging speed may decrease or the Galaxy Buds+ may not charge properly, depending on the charger type.
- The charging speed or efficiency may vary depending on the device's condition or the surrounding environment.
- If the remaining battery power of the device that functions as a wireless charger drops below a certain level, power sharing will stop.

Checking the battery level

Connect the earbuds to your mobile device, launch the **Galaxy Wearable** app on your mobile device, and view the battery status of each earbud and the charging case. Refer to [Connecting the earbuds to a mobile device](#) for more information.



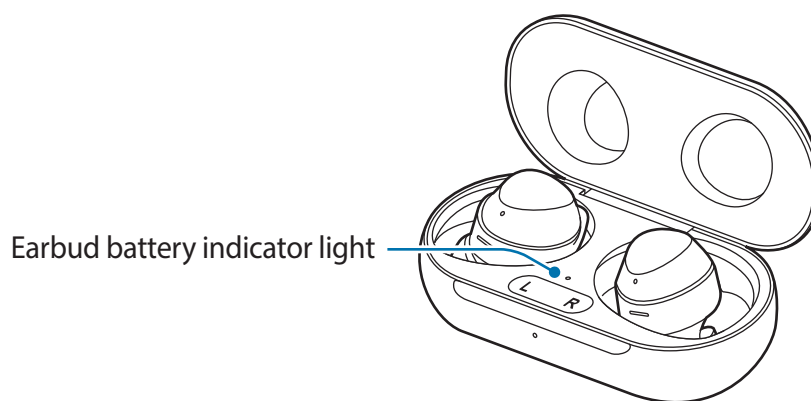
When the remaining battery level is low, a notification will appear on the mobile device's notification panel.

Battery indicator lights identification

The battery indicator lights inform you of your earbuds and the charging case's charging status.

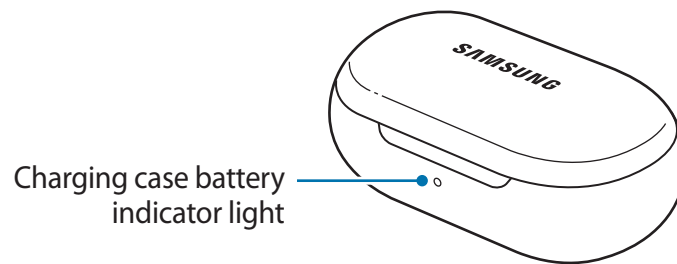
The earbud battery indicator light is located inside of the charging case and shows the charging status of the earbuds. The charging case battery indicator light on the front of the charging case indicates the charging status of the case itself.

Earbud battery indicator light



| Colour | Status |
|--------------------|---|
| Continuously red | • Charging |
| Continuously green | • Fully charged |
| Flashes red | • Charging blocked due to abnormal temperatures |

Charging case battery indicator light



| Colour | Status |
|--|---|
| Continuously red | • Charging |
| Continuously green | • Fully charged |
| Flashes red (rapid pace) | • Charging blocked due to abnormal temperatures |
| Flashes red (flashes after closing the charging case) | • Battery power is low (lower than 10 %) |
| Red (stays on for five seconds after closing the charging case) | • Battery power is low (lower than 30 %) |
| Yellow (stays on for five seconds after closing the charging case) | • Battery power is moderate (between 30 % and 60 %) |
| Green (stays on for five seconds after closing the charging case) | • Battery power is high (more than 60 %) |



- The charging case battery indicator light flashes red when the external power is cut off during charging.
- If the battery indicator lights do not work as described, disconnect the charger from the charging case and reconnect it.
- The charging case battery indicator light will turn on only after inserting the earbuds into the charging case and closing it.

Using the earbuds

Connecting the earbuds to a mobile device

Connecting the earbuds to a Samsung mobile device for the first time

- 1 Check the direction of each earbud and correctly insert them into their corresponding slots in the charging case.

If the earbud battery indicator light does not flash, connect the charging case to the charger and charge them for more than 10 minutes.

- 2 Close the charging case.

- 3 Open the charging case.

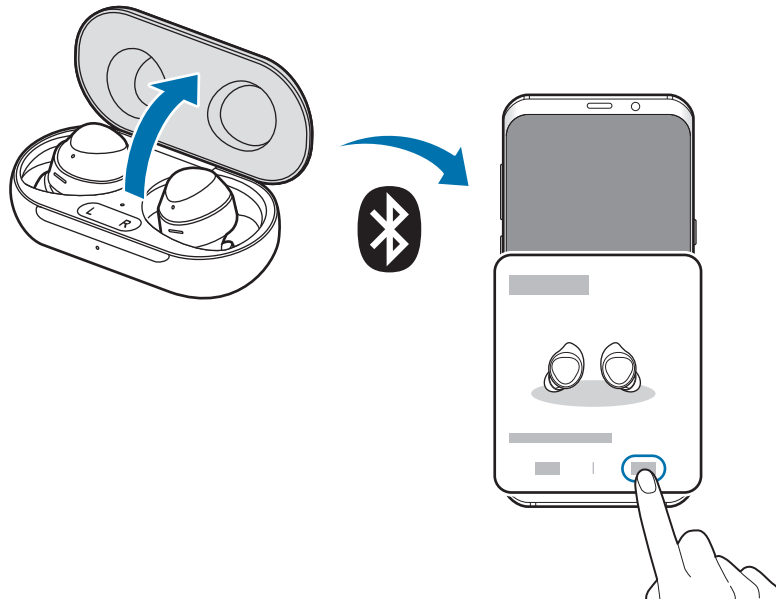
The earbuds will enter Bluetooth pairing mode automatically and a pop-up window will appear on your mobile device.

If the pop-up window does not appear or if you want to connect to a non-Samsung mobile device that also uses the Android OS, refer to [Connecting to a non-Samsung mobile device that also uses the Android OS \(or, the connection pop-up window does not appear\)](#).



When the charging case battery indicator light flashes in red, take out the earbuds from the charging case and insert them into the case again.

- 4 On your mobile device, tap **Connect** on the pop-up window.



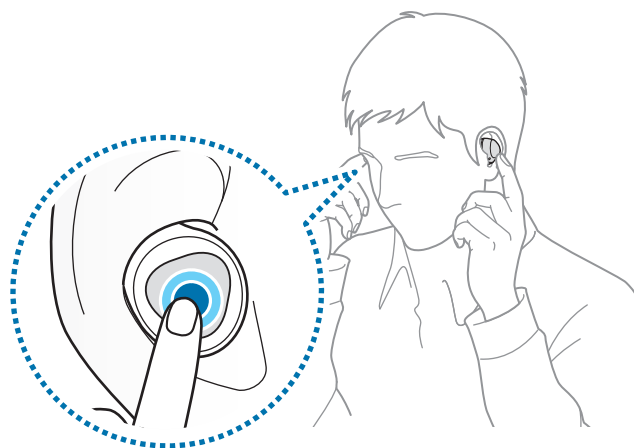
The connection pop-up window will appear only on Samsung mobile devices running Android 7.1.1 or later that have the SmartThings app installed. If the pop-up window does not appear, update the SmartThings app to the latest version.

- 5 Follow the on-screen instructions to complete the connection.

Once the earbuds are connected to your mobile device, they will automatically attempt to connect to your mobile device whenever you open the charging case while the earbuds are inside it.



- If the earbuds do not connect to a mobile device within three minutes, Bluetooth pairing mode will be deactivated. Close the charging case again and open it. The earbuds will enter Bluetooth pairing mode.
- If you want to connect to another mobile device after a connection has been established, refer to [Connecting with other devices after disconnecting from the previous mobile device](#).
- When connecting earbuds with a mobile device that has been signed in to a Samsung account, the earbuds pairing information will be synced on the other mobile devices that use the same Samsung account and you do not need to pair them at the beginning again. To connect the other devices that use the same Samsung account with the earbuds, on the mobile devices that you want to connect, open the notification panel and tap **Media**, or tap **Settings** → **Connections** → **Bluetooth**, and then select the earbuds synced through the Samsung account.
- If only a single earbud is connected to your mobile device, you will hear the sound in mono. It will automatically switch to stereo mode when both earbuds are connected to your mobile device.
- If the earbuds do not connect to a mobile device, the connection pop-up window does not appear, or your mobile device cannot find the earbuds, tap and hold both earbuds' touchpads while wearing them to enter Bluetooth pairing mode manually. When Bluetooth pairing mode is entered, you will hear a sound. However, you cannot use this method when you are playing music after setting the volume adjustment as a preset tap-and-hold feature.



Connecting to a non-Samsung mobile device that also uses the Android OS (or, the connection pop-up window does not appear)

1 On your mobile device, launch **Galaxy Store** or **Play Store** and download the Galaxy Wearable app.



- You can download the Galaxy Wearable app only on mobile devices running Android operating system 5.0 (API 21), or later, and with 1.5 GB of RAM or more.
- You can change the language of the Galaxy Wearable app on your connected mobile device. On your mobile device, launch **Settings** → **General management** → **Language and input** → **Language**. English may appear by default if the selected language on the Settings screen is not supported on the Galaxy Wearable app.
- When connecting to an iOS mobile device, launch the **App Store** app and install the Galaxy Buds+ app to connect your earbuds to your device. Some features may not be available.

2 Check the direction of each earbud and correctly insert them into their corresponding slots in the charging case.

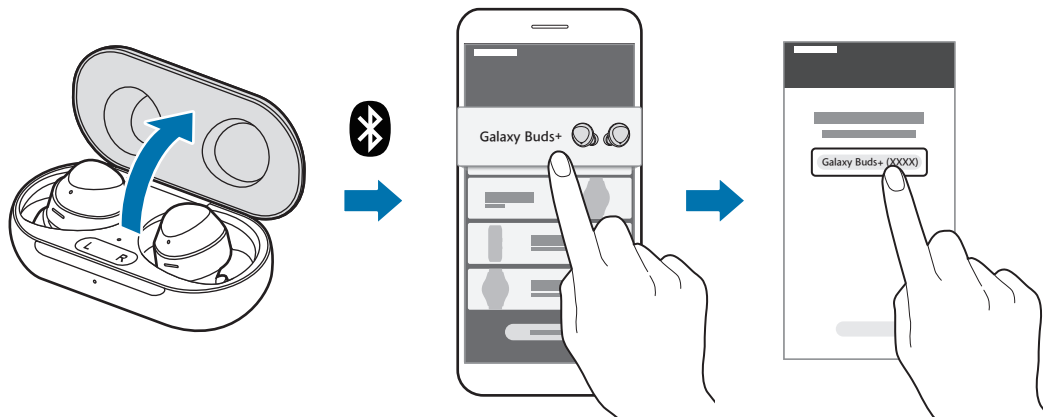
If the earbud battery indicator light does not flash, connect the charging case to the charger and charge them for more than 10 minutes.

3 Close the charging case.

4 Open the charging case.

The earbuds will enter Bluetooth pairing mode automatically.

- 5 On your mobile device, activate the Bluetooth feature to connect the earbuds to your mobile device, launch the **Galaxy Wearable** app, and then follow the on-screen instructions to complete the connection.



Tips and precautions when connecting to the mobile device

- If the earbuds do not connect to a mobile device within three minutes, Bluetooth pairing mode will be deactivated. Close the charging case again and open it. The earbuds will enter Bluetooth pairing mode.
- If you want to connect to another mobile device after a connection has been established, refer to [Connecting with other devices after disconnecting from the previous mobile device](#).
- If the earbuds do not connect to a mobile device, the connection pop-up window does not appear, or your mobile device cannot find the earbuds, tap and hold both earbuds' touchpads while wearing them to enter Bluetooth pairing mode manually. When Bluetooth pairing mode is entered, you will hear a sound. However, you cannot use this method when you are playing music after setting the volume adjustment as a preset tap-and-hold feature.
- Connection methods may vary depending on your device and software version.
- You can download the Galaxy Wearable app only on mobile devices running Android operating system 5.0 (API 21), or later, and with 1.5 GB of RAM or more.

Tips and precautions for using Bluetooth

Bluetooth is a wireless technology standard that uses a 2.4 GHz frequency to connect to various devices over short distances. It can connect and exchange data with other Bluetooth enabled devices, such as mobile devices, without connecting via cables.

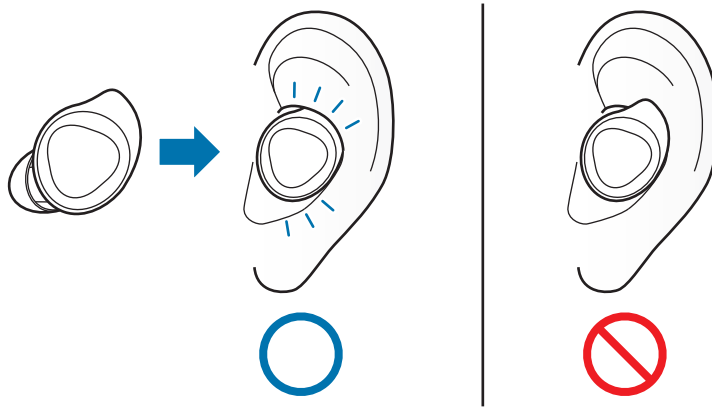


Notices for using Bluetooth

- To avoid problems when connecting your earbuds to another device, place the devices close to each other.
- Ensure that your earbuds and the other Bluetooth device are within the Bluetooth connection range (10 m). The distance may vary depending on the environment the devices are used in.
- Ensure that there are no obstacles between the earbuds and a connected device, including human bodies, walls, corners, or fences.
- Do not touch the Bluetooth antenna of a connected device.
- Bluetooth uses the same frequency as some industrial, scientific, medical, and low power products and interference may occur when making connections near these types of products.
- Some devices, especially those that are not tested or approved by the Bluetooth SIG, may be incompatible with the earbuds.
- Do not use the Bluetooth feature for illegal purposes (for example, pirating copies of files or illegally tapping communications for commercial purposes).

Wearing the earbuds

Insert the wing tips into your ears and adjust accordingly to fit your ears.



- Your device contains magnets, which may affect medical devices, such as pacemakers or implantable cardioverter defibrillators. If you are using any of these medical devices, keep your device a safe distance from them and consult with your physician before you use the device.
- Keep a safe distance between your device and objects that are affected by magnets. Objects such as credit cards, passbooks, access cards, boarding passes, or parking passes may be damaged or disabled by the magnets in the device.



- If the touch-sensitive sensor does not make contact with your ear, the earbud may not work. Use the wing tips and ear tip that fit your ears if you do not hear a sound informing you that the earbud is detected.
- Follow all posted warnings and directions from authorised personnel in areas where the use of wireless devices is restricted, such as aeroplanes and hospitals.

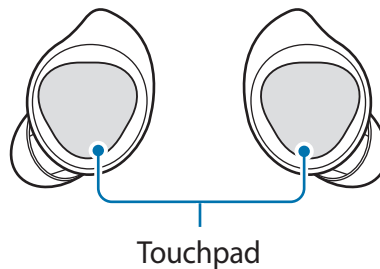
1 Check the direction of each earbud and put them in your ears with the wing tip facing upwards until they sit conformably in your ears.

2 Adjust the earbuds by rotating them to the left or right to fit your ears.

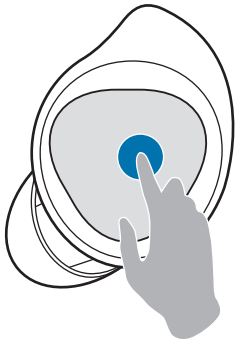
The touch-sensitive sensor will automatically detect that you are wearing the earbuds when you put them on. Then, the earbud will emit a sound informing you that the earbud is detected.

Using the touchpad

You can control music playback, answer or reject calls, and start a conversation with Bixby by using the touchpad.



- To avoid hurting your ears, do not apply excessive pressure to the touchpad with your fingertips.
- To avoid damaging the touchpad, do not tap it with anything sharp.



Single tap

- Play or pause track.



Double tap

- Play next track.
- Answer or end a call.
- Place the current call on hold and answer the second call.
- Switch between the current call and the held call.



Triple tap

- Play previous track.
 - If you triple-tap three seconds after a track begins playing, it will start the track from beginning. Triple-tap the touchpad within three seconds of when a track begins playing to play the previous track.



Tap and hold

- Activate a preset feature.
 - It is set by default to launch Bixby. Refer to [Setting a preset tap-and-hold feature](#) for more information about changing preset menus.
- Decline a call.
- Turn the microphone on or off during a call.
 - This will not display anything on the mobile device.
- Retrieve a held call after ending a current call.



If the earbuds do not connect to a mobile device, the connection pop-up window does not appear, or your mobile device cannot find the earbuds, tap and hold both earbuds' touchpads while wearing them to enter Bluetooth pairing mode manually. When Bluetooth pairing mode is entered, you will hear a sound. However, you cannot use this method when you are playing music after setting the volume adjustment as a preset tap-and-hold feature.


Using the touchpad lock feature

You can prevent unintended actions by using the touchpad lock feature.

- 1 Launch the **Galaxy Wearable** app on the mobile device.
- 2 Tap **Touchpad**.
- 3 Tap the **Lock touchpad** switch to activate it.

Setting a preset tap-and-hold feature

You can select a preset tap-and-hold feature of each earbud to activate features quickly and conveniently.

- 1 Launch the **Galaxy Wearable** app on the mobile device.
 - 2 Tap **Touchpad**.
 - 3 Tap **Left** or **Right** under **Touch and hold touchpad**.
 - 4 Select a feature that you want to use as a preset tap-and-hold feature.
 - **Voice command:** Start a conversation with an intelligent voice assistant service. When using Bixby, refer to [Using Bixby](#) for more information.
 - **Ambient sound:** Activate or deactivate ambient sound mode.
 - **Volume down/Volume up:** Adjust the volume.
-  • If you select the volume adjustment feature as one side's preset tap-and-hold feature, the other side's preset tap-and-hold feature is also automatically set to the to volume adjustment feature.
- When the volume adjustment feature has been already selected and you try to change the one side's preset tap-and-hold feature, the other side's preset tap and hold feature is automatically set to launch Bixby.

Using Bixby

Bixby is a user interface that helps you use your device more conveniently.

You can talk to Bixby. Bixby will launch a function you request or show the information you want on the connected mobile device.



- This feature is available only when a mobile device that supports Bixby is connected.
- Only some languages are available depending on Bixby set on your mobile device. Certain features may not be available depending on your region.
- When you select the volume adjustment feature as one side's preset tap-and-hold feature, the other side's preset tap-and-hold feature is also automatically set to the volume adjustment feature, and you cannot launch Bixby. Refer to [Setting a preset tap-and-hold feature](#) for more information about changing preset menus.

1 Make sure you set a preset tap-and-hold feature for launching Bixby and tap and hold the touchpad.

Bixby will be launched on your connected mobile device.

2 Say what you want to Bixby.

Bixby will launch the function you request or show the information you want on the connected mobile device when it recognises what you say through the Galaxy Buds+.

To repeat what you said before or to say something new, tap and hold the touchpad.

Tips for better voice recognition

- Speak clearly.
- Speak in quiet places.
- Do not use offensive or slang words.
- Avoid speaking in dialectal accents.

The Galaxy Buds+ may not recognise what you say or may perform unwanted commands depending on your surroundings or how you speak.

Listening to music

Listen to music saved in your mobile device by connecting the earbuds to the mobile device. You can stream music played from the connected mobile device.

On your mobile device, launch a music player app and play music.

You can listen to music through your earbuds.

Playing or pausing the track

Tap the touchpad to play and pause the track.

Playing the next track

Double-tap the touchpad to play the next track during playback.

Playing the previous track

Tap the touchpad three times to play the previous track during playback.



If you triple-tap three seconds after a track begins playing, it will start the track from beginning. Triple-tap the touchpad within three seconds of when a track begins playing to play the previous track.

Adjusting the volume

You can adjust the volume by tapping and holding the earbud's touchpad after setting it as a preset tap-and-hold feature.

- 1 Launch the **Galaxy Wearable** app on the mobile device and tap **Touchpad**.
- 2 Tap **Left** or **Right** under **Touch and hold touchpad** and select **Volume down** or **Volume up**.



If you select the volume adjustment feature as one side's preset tap-and-hold feature, the other side's preset tap-and-hold feature is also automatically set to the volume adjustment feature.

3 Tap and hold the right earbud's touchpad and release your finger when you reach the desired volume to increase the volume.

Tap and hold the left earbud's touchpad and release your finger when you reach the desired volume to decrease the volume.

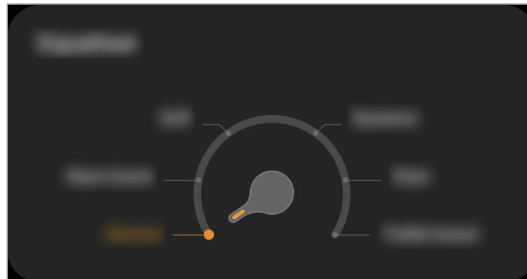


- Adjust the volume via your connected mobile device if a sound is low in your earbuds while at full volume.
- If you connect the earbuds to your mobile device while listening to music, the volume may change.

Using the equaliser

You can select from six different equaliser presets and enjoy the same music with a different and unique sound.

Launch the **Galaxy Wearable** app on the mobile device and select a preset you want on the **Equaliser** card.



Using call features

When the earbuds are connected to a mobile device, you can answer and control calls from the connected mobile device.

Answering or declining a call

When a call comes in while you are wearing the earbuds, they will emit a sound and a voice notification will inform you of the incoming call's phone number or the name saved in your contacts.

To answer the call, double-tap the touchpad.

To decline the call, tap and hold the touchpad.



If you are not notified of the incoming call's phone number or the name saved in your contacts via voice notification, launch the **Galaxy Wearable** app on the mobile device and tap **Notifications** → **Apps to get notifications from**. Then, tap ▼, select **All**, and then tap the **Incoming call** switch to activate the feature.

Answering a second call

When a second call comes in during a call, the earbuds will emit a sound.

To stay on the current call and reject an incoming second call, tap and hold the touchpad.

To place the current call on hold and answer the second call, double-tap the touchpad.

To switch between the current call and the held call, double-tap the touchpad during a call.

Turning off the microphone

Tap and hold the touchpad during a call to turn off the microphone so that the other party cannot hear you.

Ending a call

Double-tap the touchpad to end the current call.

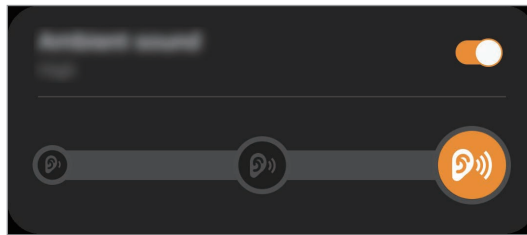
Using ambient sound mode

Hear your surroundings clearly while you are listening to music outdoors, so you can quickly detect any potentially dangerous situations.

Activate ambient sound mode from your mobile device

- 1 Launch the **Galaxy Wearable** app on the mobile device and tap the **Ambient sound** switch to activate the feature.
- 2 Drag the adjustment bar to adjust the ambient sound volume depending on the situation or place.

The ambient sound mode is activated and you can hear external sounds around you clearly.



Activate ambient sound mode by tapping and holding the touchpad

You can activate ambient sound mode by tapping and holding the earbud's touchpad after setting it as a preset tap-and-hold feature.

- 1 Launch the **Galaxy Wearable** app on the mobile device and tap **Touchpad**.
- 2 Tap **Left** or **Right** under **Touch and hold touchpad** and select **Ambient sound**.

3 Tap and hold the left or right earbud.

The ambient sound mode is activated and you can hear external sounds around you clearly.



When you activate ambient sound mode, you may hear sudden loud external sounds.



- During a call, ambient sound mode will turn off automatically. After the call, the mode returns to the previous state.
- When your earbuds do not fit in your ears or when using ear tips that do not fit your ears, feedback may occur. Attach ear tips that fit your ears and wear them properly or turn down the ambient sound volume.
- Launch the **Galaxy Wearable** app on the mobile device, select **Labs**, and then tap the **Extra-high ambient volume** switch to activate the feature. Then, you can set the ambient sound volume to **Extra high**. However, feedback may occur easily if you set the ambient sound volume to **Extra high**.
- The feature can be used after you connect your earbuds to the Galaxy Wearable app for the first time.

Galaxy Wearable App

Introduction

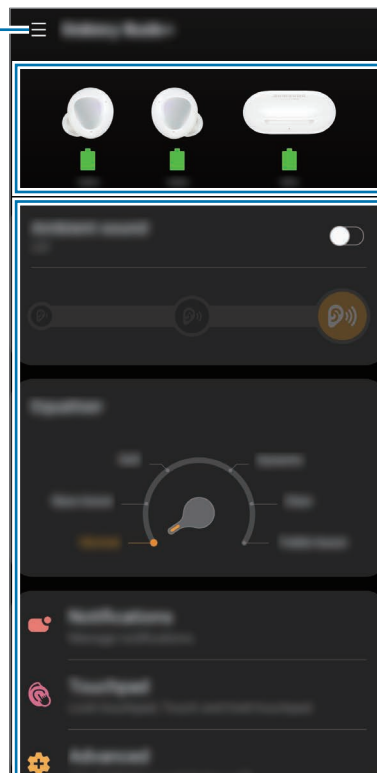
To connect the earbuds to a mobile device, you must install the Galaxy Wearable app on your mobile device. Using the Galaxy Wearable app, you can view the Galaxy Buds+ status and customise its settings.

Launch the **Galaxy Wearable** app on your connected mobile device.



- If it is the first time connecting the earbuds and a mobile device, refer to [Connecting the earbuds to a mobile device](#) for more information.
- Some features may not be available depending on the type of connected mobile device.

Access additional options.




Galaxy Buds+'s battery status

Customise your Galaxy Buds+ settings

Connecting and disconnecting the earbuds

Disconnecting mobile devices from the earbuds

Insert the earbuds into the charging case and close it. The Bluetooth connection will end.

To manually disconnect the earbuds from your mobile device, launch the **Galaxy Wearable** app on the mobile device and tap  → **Disconnect**. Or, on your mobile device, tap **Settings** → **Connections** → **Bluetooth** and unpair the earbuds and your mobile device.



The earbuds do not have a power-on/off function. If the earbuds are not used for a predefined length of time after removed from your ears, the earbuds will enter sleep mode and the mobile device will be disconnected. To enter Bluetooth pairing mode, close the charging case again and open it.

Reconnecting devices with the earbuds that temporarily disconnected

To reconnect the earbuds that temporarily disconnected from a device, insert them into the charging case and close it. Then, open the charging case again. Alternatively, tap **Connect** on the top right of the **Galaxy Wearable** app on your mobile device.

Connecting with new earbuds

You can temporarily disconnect the earbuds from your mobile device and connect additional ones.

Launch the **Galaxy Wearable** app on the mobile device and tap  → **Connect new device**.

Connecting with other devices after disconnecting from the previous mobile device

On your mobile device, tap **Settings** → **Connections** → **Bluetooth** and tap the switch to deactivate the Bluetooth feature or unpair the earbuds and your mobile device under **Paired devices**.

The connection between the earbuds and previous mobile device will end.

Close the charging case again and open it to enter the Bluetooth pairing mode. Launch the **Galaxy Wearable** app on your mobile device and follow the on-screen instructions to complete the connection.

Switch the devices connected with earbuds

When the earbuds are connected with two or more mobile devices, you can switch the mobile devices easily without disconnecting from the previous mobile device.

On the mobile device that you want to switch to, tap **Settings** → **Connections** → **Bluetooth**, and then select earbuds under **Paired devices**.

Viewing Galaxy Buds+ status and customising settings

View the status of the Galaxy Buds+ that is connected to your mobile device and change its settings.

Launch the **Galaxy Wearable** app on the mobile device.

Ambient sound

Set the earbuds to hear your surroundings clearly while you are listening to music outdoors and control the ambient sound volume depending on the situation or place.

Equaliser

Select an equaliser preset you want to use.

Notifications

You will receive notifications from the mobile device's apps via the earbuds.

Launch the **Galaxy Wearable** app on the mobile device and tap **Notifications**.

- **Read aloud while using phone:** Set the earbuds to receive notifications of the mobile device even when you are using the mobile device.
- **Apps to get notifications from:** Select the apps you want to receive notifications from and change the notification settings for each app.

Touchpad

Change the touchpad usage settings.

Launch the **Galaxy Wearable** app on the mobile device and tap **Touchpad**.

- **Lock touchpad:** Lock the earbuds' touchpads. To use the touchpad lock feature, tap the switch to activate it. Refer to [Using the touchpad lock feature](#) for more information.
- **Touch and hold touchpad:** Select a feature to be used as a preset tap-and-hold feature. Refer to [Setting a preset tap-and-hold feature](#) for more information.

Advanced

Activate the ambient sound mode to hear your voice more clearly while you take calls through the earbuds.

Launch the **Galaxy Wearable** app on the mobile device, tap **Advanced**, and then tap the **Use Ambient sound during calls** switch to activate it.

Find My Earbuds

If you misplace your earbuds, use the Galaxy Wearable app on your mobile device to find it.

1 Launch the **Galaxy Wearable** app on the mobile device and tap **Find My Earbuds**.

2 Tap .

Your earbuds will start beeping.

3 Tap  to stop the beeping sound for both earbuds.

Tap  under each earbud to stop the beeping sound for each earbud separately.



Do not use this feature when wearing the earbuds as it may result in hearing damage due to the loud noise.

General

You can reset all your earbuds settings.

Launch the **Galaxy Wearable** app on the mobile device and tap **General** → **Reset earbuds**.

Earbuds software update

Update your earbuds' software via the firmware over-the-air (FOTA) service.

Launch the **Galaxy Wearable** app on the mobile device and tap **Earbuds software update**.

- **Download and install:** Check for and install updates manually.
- **Auto download over Wi-Fi:** Set the earbuds to download updates automatically when connected to a Wi-Fi network.
- **Last update:** View the information for the latest software update.

Tips and user manual

View how to use the Galaxy Buds+.

Launch the **Galaxy Wearable** app on your mobile device and tap **Tips and user manual** to view the quick tips for using the Galaxy Buds+. Tap **User manual** to view the full user manual.

Labs

Use new and experimental Galaxy Buds+ features.

Launch the **Galaxy Wearable** app on the mobile device and tap **Labs**.

- **Double tap earbud edge:** Tap the edge of either earbud twice to control the volume.
- **Extra-high ambient volume:** Set the ambient sound volume to **Extra high**.
- **Gaming mode:** Set the earbuds to minimise audio delay to remove the time lag from the video and sound output, and listen to vivid sound when launching a game.



This feature is available only when connecting with a Samsung mobile device that uses the Android OS.

About earbuds

View the information of the Galaxy Buds+.

Launch the **Galaxy Wearable** app on your mobile device and tap **About earbuds**.

- **Legal information:** View the legal information for the Galaxy Buds+.
- **Software information:** View the earbuds' software information.
- **Battery information:** Check the earbuds and charging case's battery information.

Appendix

Troubleshooting

Before contacting a Samsung Service Centre, please attempt the following solutions. Some situations may not apply to your Galaxy Buds+.

Your earbuds do not work

- The battery may be completely discharged. Charge the battery completely before using the earbuds.
- If an earbud's touch-sensitive sensor does not make contact with your ear, the earbud may not work. If you do not hear a sound informing you that the earbuds are detected, remove the earbuds from your ears and put them in again.
- If the touchpad becomes unresponsive or the earbuds do not work properly, insert the earbuds into their corresponding slots in the charging case, close the charging case, and then remove them after seven seconds or more.

Bluetooth device cannot locate your earbuds

- Close the charging case again and open it to enter the Bluetooth pairing mode.
- Ensure that your earbuds and the other Bluetooth device are within the Bluetooth connection range (10 m). The distance may vary depending on the environment the devices are used in.

If the tips above do not solve the problem, contact a Samsung Service Centre.

A Bluetooth connection is not established or your earbuds and the mobile device are disconnected

- Ensure there are no obstacles, such as walls or electrical equipment, between the devices.
- Ensure that the latest version of the Galaxy Wearable app is installed on the mobile device. If necessary, update the Galaxy Wearable app to the latest version.
- Ensure that your earbuds and the other Bluetooth device are within the Bluetooth connection range (10 m). The distance may vary depending on the environment the devices are used in.
- Restart the mobile device and relaunch the Galaxy Wearable app.
- If only a single earbud is connected to your mobile device, restart the earbuds to connect them both. To restart the earbuds, refer to [Restarting the earbuds](#) for more information.

The battery does not charge properly (For Samsung-approved chargers)

- Ensure that the charging contacts of the earbuds and the charging contacts of the charging case are in contact with each other.
- Ensure that the charger is connected properly to the charging case.
- If the charging contacts are dirty, the battery may not charge properly. Wipe both gold-coloured contacts with a dry cloth and try charging the battery again.
- Visit a Samsung Service Centre and have the battery replaced.

The charging time and the battery life is different between the earbuds

- The charging time may differ between the two earbuds even if they started charging at the same time.
- The charging time and the remaining battery may differ between the two earbuds due to different inner components.

The battery depletes faster than when first purchased

- When you expose the Galaxy Buds+ or the battery to very cold or very hot temperatures, the useful charge may be reduced.
- The battery is consumable and the useful charge will get shorter over time.

You cannot hear others speaking

Adjust the volume on the connected mobile device.

Sound echoes during a call

Adjust the volume with the connected mobile device or move to another area.

Audio quality is poor

- Wireless network services may be disabled due to issues with the service provider's network. Ensure to keep the earbuds away from electromagnetic waves.
- Ensure that your earbuds and the other Bluetooth device are within the maximum Bluetooth range (10 m). The distance may vary depending on the environment the devices are used in.
- You may experience drops in volume or noise depending on the connected device's volume. To avoid this, appropriately adjust the connected device's sound.

Your earbuds sound comes slower than the screen when playing videos and games

The earbuds may have a time lag between the video and sound output when playing videos or games when connected to a mobile device.

Your Galaxy Buds+ are hot to the touch

When you use the Galaxy Buds+ for an extended period of time, it may feel hot to the touch. This is normal and should not affect your Galaxy Buds+'s lifespan or performance.

If the Galaxy Buds+ overheat or feel hot for a prolonged period, do not use them for a while. If the Galaxy Buds+ continue to overheat, contact a Samsung Service Centre.

A small gap appears around the outside of the Galaxy Buds+

- This gap is a necessary manufacturing feature and some minor rocking or vibration of parts may occur.
- Over time, friction between parts may cause this gap to expand slightly.

Updating the earbuds' software with the Galaxy Buds Manager on your computer

You can update the earbuds' software after installing the Galaxy Buds Manager program on your computer when you use the mobile device besides an Android one.



- The Galaxy Buds Manager program can be downloaded on computers running Windows OS 7, 8, 8.1, 10 (32 bit, 64 bit), or Mac OS 10.8 or later.
- The Galaxy Buds Manager program can be connected to your earbuds when you use a computer that supports the Bluetooth feature.

Installing Galaxy Buds Manager

Download the Galaxy Buds Manager program on your computer from the Samsung Website (www.samsung.com) and follow the on-screen instructions to complete the installation.

Updating the earbuds' software

Galaxy Buds+

- 1 Check the direction of earbud and correctly insert them into their corresponding slots in the charging case.

If the earbud battery indicator light does not flash, connect the charging case to the charger and charge them for more than 10 minutes.

- 2 Close the charging case.

- 3 Open the charging case.

The earbuds will enter Bluetooth pairing mode automatically.



To enter Bluetooth pairing mode manually, tap and hold both earbuds' touchpads while wearing them.

Computer

- 1 Activate the Bluetooth feature.
- 2 Launch the Galaxy Buds Manager program and select **Connect**.
The earbuds and the Galaxy Buds Manager will be connected.
- 3 Select **Check for updates** to check the current earbuds' software version and whether they need to be updated, and then select **Download and Install**.
The earbuds' software will be updated.

Managing the Galaxy Buds+

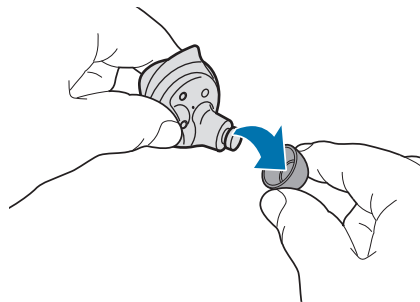
Basic maintenance


- Use a soft, dry cloth to clean the earbuds after use.
- Keep the earbuds dry. Prevent liquid from contacting or entering the earbuds.

Cleaning the receiver

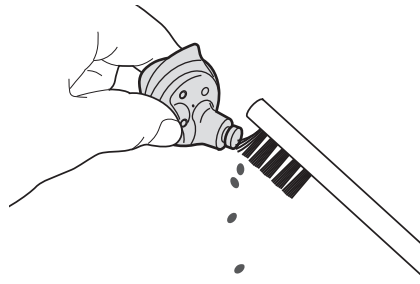
If the volume is lower than it should be with the current setting, clean the receiver.


- 1 Remove the ear tip from the protruding part at the bottom of the earbud.



-  Do not pull the ear tip excessively when you attach or detach it. The ear tip may tear.

- 2 Remove any earwax or debris from the receiver with the brush or other tools.

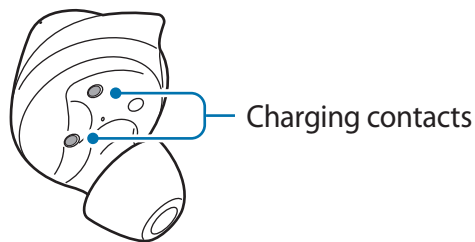


 Do not use excessive force while removing earwax or debris. The receiver may be damaged.

- 3 Cover the earbud with the ear tip.

Cleaning the charging contacts

If the battery does not charge properly, wipe both gold-coloured contacts with a dry cloth.



Cleaning the earbuds and charging case

When the charging case and earbuds are exposed to foreign materials, such as dust, sand, or metal shavings, the Galaxy Buds+ may not charge properly or may be damaged. If the earbuds or the charging case were exposed to foreign materials, wipe them with a soft and dry cloth before inserting them into the charging case.

Restarting the earbuds

If the touchpad becomes unresponsive or the earbuds do not work properly, restart the earbuds.

To restart the earbuds, insert the earbuds into their corresponding slots in the charging case and remove them after seven seconds or more.



If the charging case has low battery, connect the charging case to the charger first.

Coupling the earbuds

When you lose one of the earbuds, you do not have to purchase a new set of earbuds because you can make a new set of earbuds with a newly purchased earbud and the other earbud that you already have.

1 Check the direction of each earbud, the newly purchased earbud and previously used earbud, and correctly insert them into their corresponding slots in the charging case.

2 Tap and hold both earbuds' touchpads for seven seconds or more.

The earbud battery indicator light will flash green and turn off. Then, the earbuds are coupled.



The earbud battery indicator light will keep flashing red when the earbuds are not coupled properly. Remove the earbuds from the charging case and insert them again. Then, tap and hold both earbuds' touchpads for seven seconds or more.

3 Connect the earbuds to a mobile device. For more information, refer to [Connecting the earbuds to a mobile device](#).

Removing the battery

- **To remove the battery, contact an authorised service centre. To obtain battery removal instructions, please visit www.samsung.com/global/ecodesign_energy.**
- For your safety, you **must not attempt to remove** the battery. If the battery is not properly removed, it may lead to damage to the battery and device, cause personal injury, and/or result in the device being unsafe.
- Samsung does not accept liability for any damage or loss (whether in contract or tort, including negligence) which may arise from failure to precisely follow these warnings and instructions, other than death or personal injury caused by Samsung's negligence.

Copyright

Copyright © 2020 Samsung Electronics

This manual is protected under international copyright laws.

No part of this manual may be reproduced, distributed, translated, or transmitted in any form or by any means, electronic or mechanical, including photocopying, recording, or storing in any information storage and retrieval system.

Trademarks

- SAMSUNG and the SAMSUNG logo are registered trademarks of Samsung Electronics.
- Bluetooth® is a registered trademark of Bluetooth SIG, Inc. worldwide.



- All other trademarks and copyrights are the property of their respective owners.

Model: SM-R175

Rated voltage/current: 5 V / 160 mA (earbuds), 5 V / 600 mA (charging case), 3.7 V (internal battery)

Made in Vietnam by Samsung

PO BOX 12987, DUBLIN, IE

