

Product Description

The Functional Devices, Inc.™ RIB2421B is a great service truck relay. The SPDT 20 Amp power control relay is enclosed in a housing to save the installer the time, trouble and expense of buying and installing separate components such as relay, LED indicator, socket, mounting rail, transient protection and housing. The relay coil can be powered by 24 Vac/dc, 120 Vac, or 208-277 Vac. An externally visible LED indicates the status of the relay coil.

Product Specifications

Type: One (1) SPDT Continuous Duty Coil
Expected Life: 10 million cycles minimum mechanical
Operating Temp.: -30 to 140°F
Operate Time: 18mS
Relay Status: LED On = Activated
Dimensions: 2.30" x 3.20" x 1.80" with .50" NPT nipple
Wires: 16", 600 V Rated
Approvals: UL Listed, UL916, UL864, C-UL, California State Fire Marshal, CE, RoHS
Housing Rating: NEMA 1, Plenum

Contact Ratings:

20 Amp Resistive @ 277 Vac
 5 Amp Resistive @ 480 Vac
 20 Amp Ballast N/O @ 277 Vac
 10 Amp Ballast N/C @ 277 Vac
 10 Amp Tungsten N/O @ 120 Vac N/C
 770 VA Pilot Duty @ 120 Vac
 2 HP for N/O @ 277 Vac
 1 HP for N/C @ 120 Vac

Coil Current:

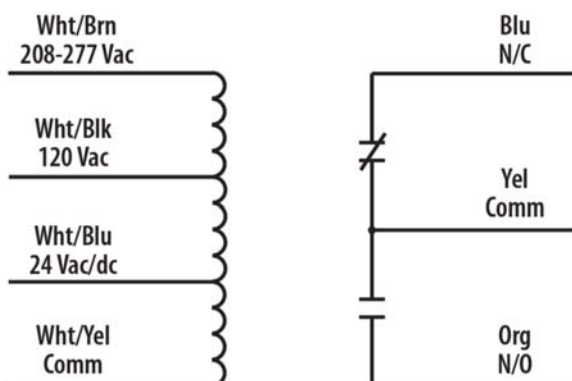
83 mA @ 24 Vac
 47 mA @ 120 Vac
 69 mA @ 208-277 Vac
 47 mA @ 30 Vdc

Coil Voltage Input:

24 Vac/dc; 120 Vac; 208-277 Vac; 50-60 Hz
 Drop Out = 2.1 Vac / 3.8 Vdc
 Pull in = 18 Vac / 22 Vdc



Product Wiring



Specifications are subject to change without notice.

Functional Devices, Inc. is a trademark of Functional Devices, Inc. RIB is a registered trademark of Functional Devices, Inc.

Website: www.jacksonsystems.com
 E-mail: info@jacksonsystems.com

5418 Elmwood Avenue
 Indianapolis, IN 46203-6025

Toll-Free: 888.652.9663
 Fax: 317.227.1034