

FEATURES & SPECIFICATIONS

INTENDED USE — LBL LED wraparound provides a digital lighting platform to deliver general ambient lighting for surface-mount applications. The LED system delivers long life and excellent color to ensure a quality, low-maintenance lighting installation. **Certain airborne contaminants can diminish the integrity of acrylic and/or polycarbonate.** [Click here for Acrylic-Polycarbonate Compatibility table for suitable uses.](#)

CONSTRUCTION — Metal parts are die formed from pre-painted code-gauge steel. Prismatic diffuser is 100% acrylic with sonically welded luminous ends. Continuous side flanges on fixture body provide light trap and continuous diffuser support to prevent accidental opening and simplify maintenance.

OPTICS — Curved prismatic diffuser with linear side prisms and highly transmissive overlay minimizes lamp image and provides high-angle brightness control. Luminous end plates soften appearance for improved aesthetics.

ELECTRICAL — Long-life LEDs, coupled with high-efficiency drivers, provide superior quantity and quality of illumination for extended service life. 70% LED lumen maintenance at >60,000 hours (L70/>60,000). The LEDs have a CRI of 80.

eldoLED driver options deliver choice of dimming range and choices for control, while assuring flicker-free, low-current inrush, 89% efficiency and low EMI.

Step-level dimming option allows system to be switched to 50% power for compliance with common energy codes while maintaining fixture appearance.

CONTROLS — Optional nLight® embedded controls continuously monitor system performance, allow for constant lumen management / compensation function, facilitate simple “plug-and-play” network and controls upgrading via Cat-5 cable. Ballast disconnect provided where required to comply with US and Canadian codes.

INSTALLATION — Intended for surface or suspend mounting.

LISTINGS — CSA certified to meet U.S. and Canadian standards. Damp listed.

DesignLights Consortium® (DLC) qualified product. Not all versions of this product may be DLC qualified.

Please check the DLC Qualified Products List at www.designlights.org/QPL to confirm which versions are qualified.

GOVERNMENT PROCUREMENT — BAA — Product with the BAA option qualifies as a domestic end product under the Buy American Act as implemented in the FAR and DFARS. Product with the BAA option also qualifies as manufactured in the United States under DOT Buy America regulations.

BABA — Build America Buy America: Product with the BAA option also qualifies as produced in the United States under the definitions of the Build America, Buy America Act.

Please refer to www.acuitybrands.com/buy-american for additional information.

WARRANTY — 5-year limited warranty. This is the only warranty provided and no other statements in this specification sheet create any warranty of any kind. All other express and implied warranties are disclaimed. Complete warranty terms located at: www.acuitybrands.com/support/warranty/terms-and-conditions

Note: Actual performance may differ as a result of end-user environment and application.

All values are design or typical values, measured under laboratory conditions at 25 °C.

Specifications subject to change without notice.

Catalog Number
Notes
Type

Low-Profile Curved-Basket LED Wraparound

LBL8

8' LENGTH, NARROW HOUSING
LED



DIMENSIONS

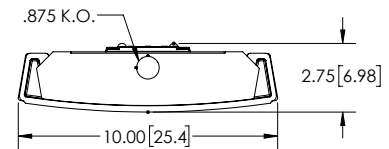
Specifications

Length: 96 (244.0)

Width: 10 (25.4)

Depth: 2-3/4 (7.0)

Weight: 20.25 lbs



All dimensions are inches (centimeters) unless otherwise indicated.

A+ Capable Luminaire

This item is an A+ capable luminaire, which has been designed and tested to provide consistent color appearance and out-of-the-box control compatibility with simple commissioning.

- All configurations of this luminaire meet the Acuity Brands' specification for chromatic consistency
- This luminaire is part of an A+ Certified solution for nLight® control networks when ordered with drivers marked by a [shaded background](#)*
- This luminaire is part of an A+ Certified solution for nLight control networks, providing advanced control functionality at the luminaire level, when selection includes driver and control options marked by a [shaded background](#)*

To learn more about A+, visit www.acuitybrands.com/aplus.

*See ordering tree for details

LBL8 LED Wraparound



A+ Capable options indicated by this color background.

ORDERING INFORMATION

Lead times will vary depending on options selected. Consult with your sales representative.

Example: LBL8 9600LM 80CRI 35K MIN10 GZT MVOLT

LBL8							
Series	Lumens ‡	CRI	Color temperature	Minimum Dimming Level	Dimming	Voltage	
LBL8 8' LED wrap	6000LM 6000 lumens	80CRI 80 CRI	30K 3000 K	MIN10 Dims to 10% ‡	(blank) None ‡	MVOLT 120-277V 347 347V ‡	
	9600LM 9600 lumens		35K 3500 K	MIN1 Dims to 1% ‡	GZT Generic 0-10V Dimming		
	14400LM 14400 lumens		40K 4000 K		ZT eldoLED 0-10V dimming		
			50K 5000 K				

Step-level Dimming Option	Emergency Options	Control Input/ Lumen Management Options ‡	Options
SLD Step-level dimming ‡	E10WLCP EM Self-Diagnostic battery pack, 10W Constant Power, Certified in CA Title 20 MAEDBS ‡ EMG For use with nLight on generator supply EM power ‡	NLIGHT nLight enabled CL80 NLIGHT nLight enabled, constant lumen output, 80%	BAA Buy America(n) Act and/or Build America Buy America Qualified BDP Factory Installed Ballast Disconnect Plug

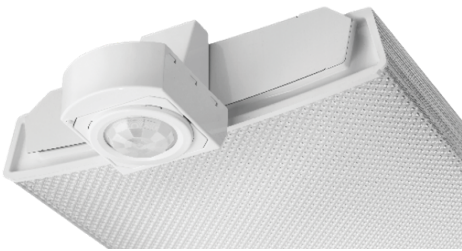
Accessories: Order as separate catalog number.		
PART NUMBER	CI CODE	DESCRIPTION
LSXRHL	*238CAE	HIGH/LOW OCC SENSOR (see page 3 for default settings)
LSXR10	*219EP7	ON/OFF OCC SENSOR
STACG36 F1	*208XVT	CABLE GRIPPER KIT, 36 INCH F1 CEILING TYPE
STACG36 F2	*208XVY	CABLE GRIPPER KIT, 36 INCH F2 CEILING TYPE
STACG72 F1	*208XW2	CABLE GRIPPER KIT, 72 INCH F1 CEILING TYPE
STACG72 F2	*208XWV	CABLE GRIPPER KIT, 72 INCH F2 CEILING TYPE
STACGF36 F1	*208XW7	KIT WITH POWER FEED, 36 INCH F1 CEILING TYPE
STACGF36 F2	*208XVV	KIT WITH POWER FEED, 36 INCH F2 CEILING TYPE
STACGF72 F1	*208XW3	KIT WITH POWER FEED, 72 INCH F1 CEILING TYPE
STACGF72 F2	*208XW0	KIT WITH POWER FEED, 72 INCH F2 CEILING TYPE
STACGE36 F1	*210AC1	KIT WITH EMERGENCY POWER FEED, 36 INCH F1 CEILING TYPE
STACGE36 F2	*210CN1	KIT WITH EMERGENCY POWER FEED, 36 INCH F2 CEILING TYPE
STACGE72 F1	*210AAV	KIT WITH EMERGENCY POWER FEED, 72 INCH F1 CEILING TYPE
STACGE72 F2	*210CMP	KIT WITH EMERGENCY POWER FEED, 72 INCH F2 CEILING TYPE

Replacement Part: Order as separate catalog number.		
PART NUMBER	CI CODE	DESCRIPTION
DLBL48	*258LR5	REPLACEMENT DIFFUSER - ORDER QTY 2 TO REPLACE BOTH DIFFUSERS ON FIXTURE

‡ Option Value Ordering Restrictions	
Option value	Restriction
347	Not available with SLD option. Not available with emergency battery option E10WLCP.
6000LM	Approximate lumen output.
9600LM	Approximate lumen output.
14400LM	Approximate lumen output. Not available with emergency battery option E10WLCP.
(blank)	When Control Input/ Lumen Management option specified leave Dimming section blank.
CL80 NLIGHT	When Control Input/ Lumen Management option specified leave Dimming section blank.
E10WLCP	Not available with 14400LM option. Not available with 347V.
EMG	Requires NLIGHT control option. EMG option requires a connection to existing nLight network. Power is provided from a separate N80 or N100 enabled fixture.
MIN1	Requires ZT or NLIGHT control option.
MIN10	Requires GZT control option.
NLIGHT	When Control Input/ Lumen Management option specified leave Dimming section blank.
SLD	If SLD selected, must leave Minimum Dimming Level & Control options blank. SLD option requires two hot (black) wires and a shared neutral (white) wire - see installation instructions for wiring diagram.

LBL8 LED Wraparound

Performance Data			
Lumen Package	Lumens	Input Watts	LPW
6000LM 80CRI 30K	5970	49.7	120
6000LM 80CRI 35K	6255	49.7	126
6000LM 80CRI 40K	6350	49.7	128
6000LM 80CRI 50K	6540	49.7	132
9600LM 80CRI 30K	8956	80.1	112
9600LM 80CRI 35K	9384	80.1	117
9600LM 80CRI 40K	9527	80.1	119
9600LM 80CRI 50K	9812	80.1	122
14400LM 80CRI 30K	13467	112.5	120
14400LM 80CRI 35K	14110	112.5	125
14400LM 80CRI 40K	14325	112.5	127
14400LM 80CRI 50K	14754	112.5	131

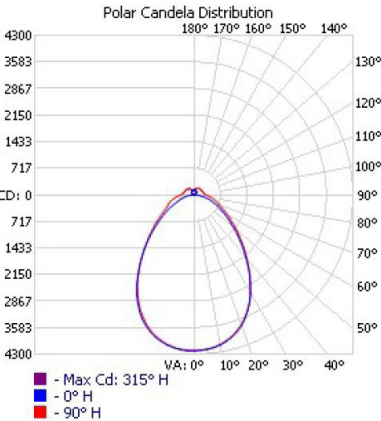


Sensor Switch LSXRHL Sensor Accessory	
Lens type:	10 - Low Mount 360° coverage
Dimming:	HL - High/Low Occupancy operation
Min Dim Level:	3V - approximately 10% light output when unoccupied
Time Delay:	5M - 5 minutes

How to Estimate Delivered Lumens in Emergency Mode
Use the formula below to estimate the delivered lumens in emergency mode.
Delivered Lumens = 1.25 x P x LPW
P = Output power of emergency driver. P = 10W for E10WLCP option.
LPW = Lumen per watt rating of the luminaire. LPW information available in Performance Data section.

PHOTOMETRICS

LBL8 9600LM 80CRI 35K



COEFFICIENTS OF UTILIZATION - ZONAL CAVITY METHOD												
EFFECTIVE FLOOR CAVITY REFLECTANCE: 20%												
RCC %:	80				70				50			
RW %:	70	50	30	0	70	50	30	0	50	30	20	0
1	1.17	1.17	1.17	1.17	1.13	1.13	1.13	1.13	1.05	1.05	1.05	1.05
2	1.07	1.02	.98	.95	1.03	.99	.95	.77	.93	.90	.87	.85
3	.98	.91	.84	.79	.95	.88	.82	.66	.83	.78	.74	.78
4	.90	.81	.73	.67	.87	.78	.72	.58	.74	.68	.64	.70
5	.84	.73	.65	.58	.81	.71	.63	.51	.67	.61	.56	.63
6	.77	.66	.57	.51	.75	.64	.56	.46	.61	.54	.49	.58
7	.72	.60	.51	.45	.69	.58	.50	.41	.55	.49	.44	.53
8	.67	.54	.46	.41	.65	.53	.46	.37	.51	.44	.39	.49
9	.63	.50	.42	.37	.61	.49	.42	.34	.47	.40	.36	.45
10	.59	.46	.39	.33	.57	.45	.38	.31	.43	.37	.32	.42
	.55	.43	.35	.31	.53	.42	.35	.28	.40	.34	.30	.39

ZONAL LUMEN SUMMARY		
ZONE	LUMENS	% LUMINAIRE
0-30	3091.7	32.5%
0-40	4752.5	49.9%
0-60	7167.8	75.3%
60-90	1369.1	14.4%
70-100	908.1	9.5%
90-120	494.1	5.2%
0-90	8536.9	89.6%
90-180	987.8	10.4%
0-180	9524.7	100%

MOUNTING DATA

Suspension Kit Ceiling Types: F1 for use with most T-bar and screw slot grid ceiling applications. Designed for on-grid and off-grid installations.
F2 for use with recessed or surface-mount horizontal J-box applications.
For unit or row installation; surface or suspend mounting.
For aircraft cable, one STACG_, STACGF_, or STACGE_ required for each of the 4 suspension points.
See Accessories ordering tree, page 1.

