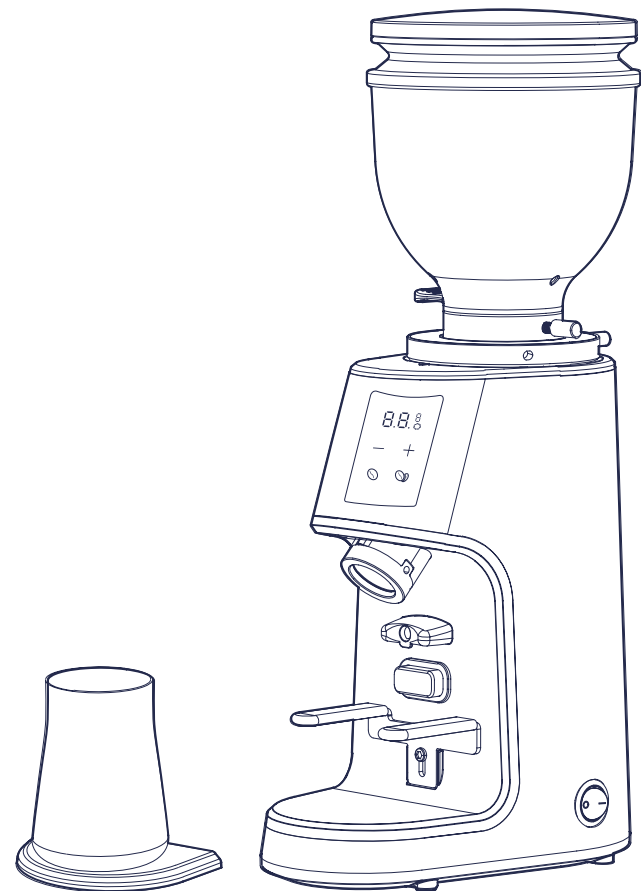


## PROFESSIONAL FLAT COFFEE GRINDER

CG301



### OPERATING YOUR BURR GRINDER

### Operating Your Burr Grinder

#### BURR GRINDER OVERVIEW

Your Burr Grinder has 100 unique grind size settings that are suitable for a range of brewing methods, from the finest setting for espresso to the coarsest setting for French press. By adjusting the Time Buttons, you can choose maximum 30 seconds for a single cup, 60 seconds for a double cup.grinding time accurate to 0.1 seconds.

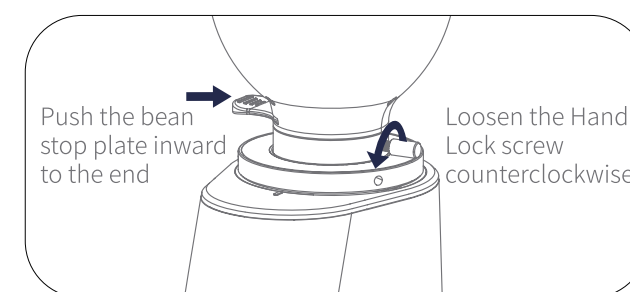
	Espresso	Moka	Americano	Cold brew Pour Over	French Press
Coffee Type					
Coarseness	Fine	Slight fine	Middle coarse	Slight coarse	Coarse
Setting	1-20	20-40	40-60	60-80	80-100

**Note:** Above info as reference, grinding coarseness should be adjusted according to actual coffee bean type and taste preference.

**Note:** The **Bean Hopper** holds a maximum of 9 oz (250 g) of coffee beans.  
\*Capacity may vary depending on coffee type and roast.

1

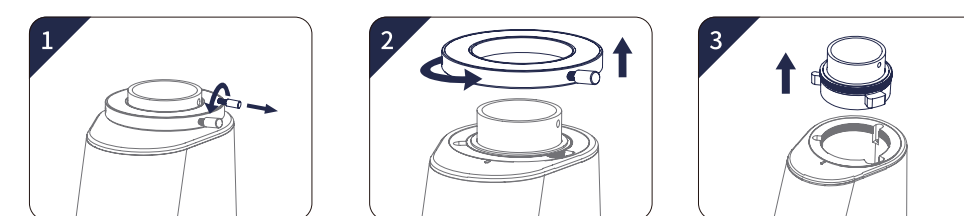
### Operating Your New Appliance



#### Attention before use

1. Make sure the coffee grinder is unplugged or the On/Off switch is off.
2. Make sure there are no coffee beans in the bean container.
3. Loosen the hand-lock screw counter-clockwise until the bean box can be removed upwards (Note: If there are coffee beans inside the bean container, you need to push the bean stop plate inward to the end before removing the bean hopper to prevent the coffee beans from leaking out).

**TIPS:** The initial position is the finest setting. Turn counterclockwise to make it coarser. Do not turn clockwise!



#### To remove the upper burr assembly

1. Unscrew the hand-lock screw counterclockwise and take out.
  2. Then unscrew the scale ring counterclockwise and take out.
  3. The upper burr assembly can now be taken out upwards.
- NOTE:** Since the upper burr assembly and the bean grinding room are precision machining, it should be taken out slowly and gently upward to avoid damage.

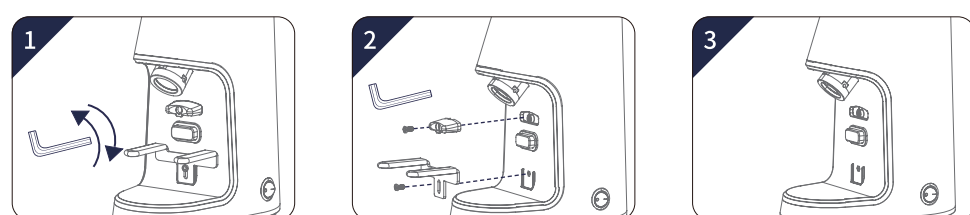
2



#### Assemble upper burr assembly, coarseness ring and bean container

1. Align the three ears of the cleaned upper burr assembly with the three slots on the bean grinding room, and slowly enter it in a smooth state.
2. Ensure that there is no residue on the screw threads and place the scale ring down onto the upper burr assembly; Keep pressing the upper burr assembly down and rotate the scale ring clockwise until the scale ring is screwed on tightly.
3. Put the bean container on the upper burr assembly and lock the hand-lock screw clockwise tightly.

**NOTE:** There will be no functions once take out the upper burr assembly.

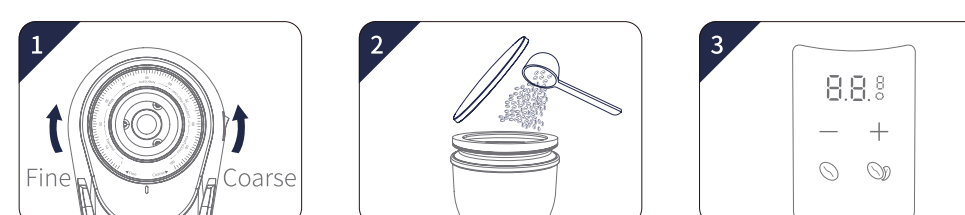


#### Remove and assemble the portafilter bracket and portafilter block

1. Hexagonal wrench to loosen the screws on the portafilter bracket, the height of the portafilter bracket can be adjusted up and down and tight screws,to proper height of the portafilter to better catch the coffee powder.
  2. The portafilter bracket and portafilter block can be removed with the hexagonal wrench.
- NOTE:** In order to catch coffee powder by coffee ground jug.

3

### Operating instructions



1. Rotate the Grind Size Selector (clockwise rotation for fine, counterclockwise rotation for coarse) to select the appropriate coarseness. Total 100 coarseness setting options. When the number on the scale circle is aligned with the reference point on the top cover, it represents the coarseness setting selected.

**Note:** When there are remaining coffee beans or coffee ground in the grinding room, it is not possible to adjust to be finer; only when the grinding room is clean or when it is grinding, it can be adjust to be finer. In order to adjust the coarseness of the coffee ground more precisely, it is recommended to rotate the bean cup at the same time to adjust the coarseness while the machine is starting up

2. Put the right amount of coffee beans into the bean box, the coffee beans should not exceed the MAX level. Pull the Trap Door and the coffee beans fall automatically into the grinding room. Grinding time increase button: (+); Grinding time decrease button: (-);

Single shot button: (S); double shot button: (DS); grinding time digits: 8.8.8  
After the power cord is plugged in, press the On/Off switch, the grinder beeps for one time, the display shows default setting.

#### Grind Operation

**Single-shot grinding operation:** touch the single-shot grinding button. The default time displays shows 10 seconds ,you can touch the time increase/decrease button "+" "-" to adjust the time,the time range is 0-30 seconds. Press the start/stop switch to start grinding till display shows 0 or Press the start/stop switch again to stop grinding. Single shot light turn to be orange, other button light up. Time indicate 10s, Grinding time is kept in memory when work next time, even in the situation after power off.

**Double-cup grinding operation:** touch the double-shot grinding button. The default time displays shows 20 seconds ,you can also touch the time increase/decrease button "+" "-" to adjust the time,the time range is 20 to 60 seconds.Press the start/stop switch to start grinding till display shows 0 or Press the start/stop switch again to stop grinding. Double shot light turn to be orange, other button light up. Time indicate 20s, Grinding time is kept in memory when work next time, even in the situation after power off.

**NOTE:** Grinder has grinding time memory function. It will memorize the time if the cycle is finished.

4

**Manual mode:** Press single shot and double shot buttons (S) (DS) at the same time for 2 S; Display shows (M)

Single shot and double shot light up white at the same time. Press start/stop button, both single shot and double shot light dim. Single shot and double shot light up at the same time when finish grinding for 60 seconds, or press again ON/OFF switch to stop grinding. Single shot and double shot light up at the same time, Press any buttons to quit manual mode.

**Restore default setting:** press time increase and time decrease buttons (+) (-) at the same time for 2 seconds.

**Turn on/off buzzer:** Press time increase button and double shot button (+) (DS) at the same time for 2 seconds to turn on or turn off the buzzer.

**Protection:** Max cumulative grinding time is 30 minutes. If it keeps grinding for 30 minutes, the display show show "E2". The grinder enters into protection mode. Stop for 10 minutes it will recover.

**Note:** Continuous grinding is cumulative if the time between each break is less than 10 minutes.

5