

Before you get started, a few pointers:

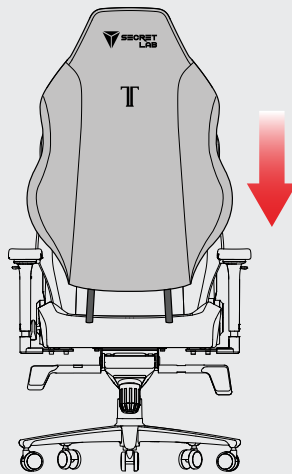
- Please ensure that your chair is free from visible dust or dirt before installation.
- Adjust your armrests horizontally to their most outward positions.
- Optional: Use a cloth iron on low heat to smooth out any minor creases in either sleeves before assembling.

BACKREST SLEEVE ASSEMBLY**01**

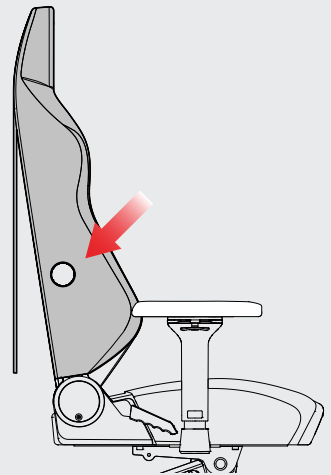
Unzip the side and bottom zippers.

**02**

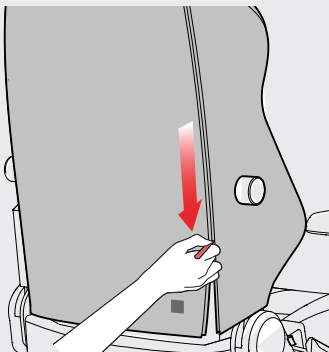
Slide the backrest sleeve over your chair and pull it down the seat's backrest.

**03**

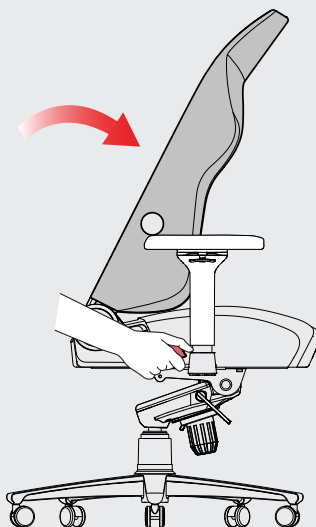
Ensure holes on the backrest sleeve align with the lumbar knobs on the chair wings.

**04**

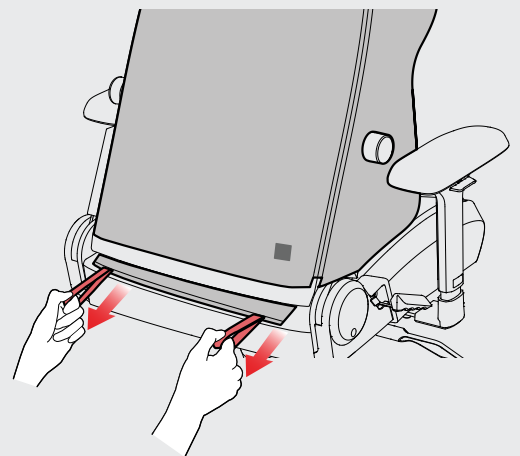
Once the backrest sleeve is securely on, zip down the zippers on either side of the backrest sleeve and adjust for a snug fit.

**05**

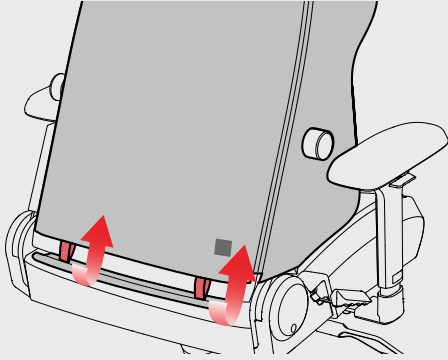
Incline the backrest all the way forward.

**06**

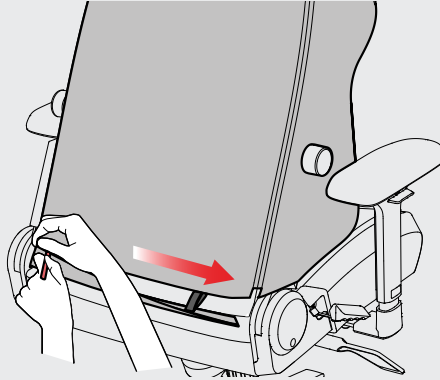
Locate two straps at the base of the backrest sleeve. Route them through the gap between the seat's backrest and seat base, then tug gently to reinforce fit.



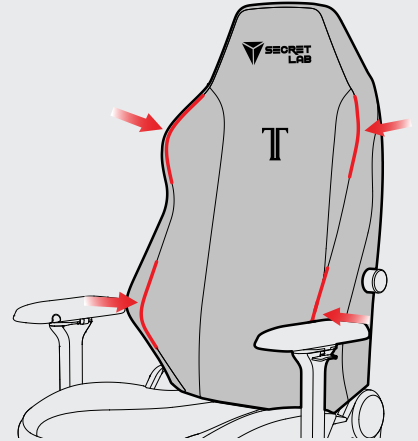
- 07** Pull both straps upward and tuck them in.



- 08** Connect the top and bottom zipper of the upper and lower backrest sleeve and zip close. If straps slip out, simply tuck them back upwards and continue zipping.

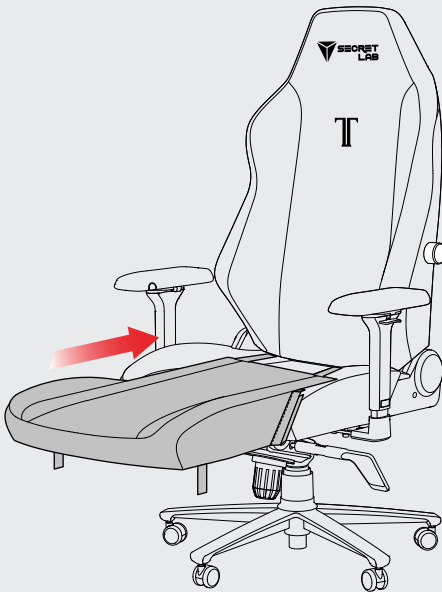


- 09** Adjust backrest sleeve for the best fit. Starting from the chair's side wings, lightly tug the sleeve inwards or outwards to align the seams and accents of the sleeve with the edges of your chair.



SEAT BASE SLEEVE ASSEMBLY

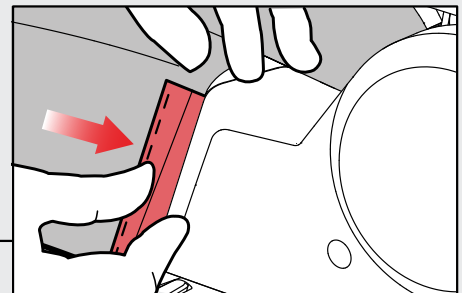
- 01** Pull the seat base sleeve over the seat base and ensure general alignment.



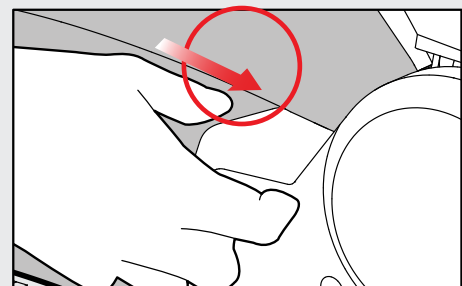
- 02** Once the seat base sleeve is on, slide in the sleeve inserts on the left and right sides of the seat base sleeve. Ensure they are securely slotted in.

Note: When installing the right sleeve insert, do not apply any pressure on or pull the recline lever to prevent accidentally adjusting the backrest.

- a. Align the side of the sleeve insert with the side of the recline cover, then slide it in.

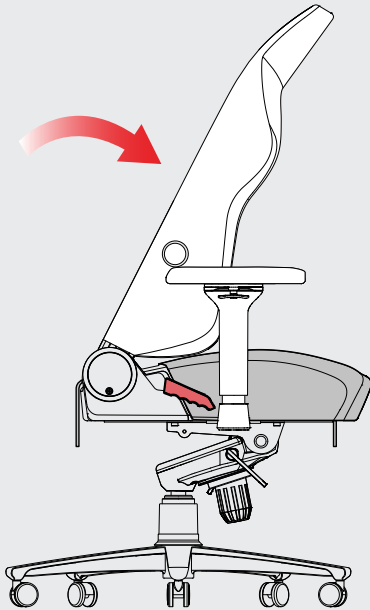


- b. Tuck the top of the sleeve insert into the gap between the seat base and recline cover.



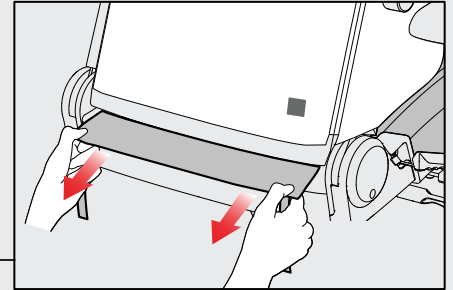
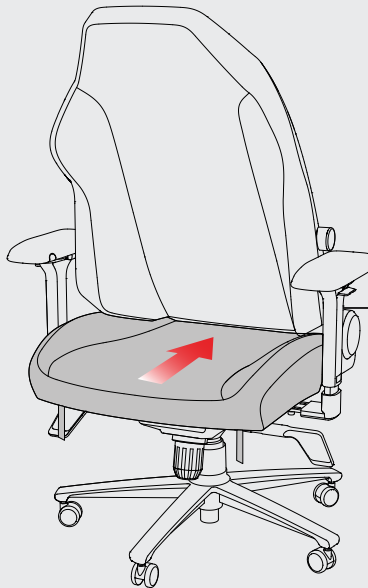
03

Incline the backrest all the way forward.



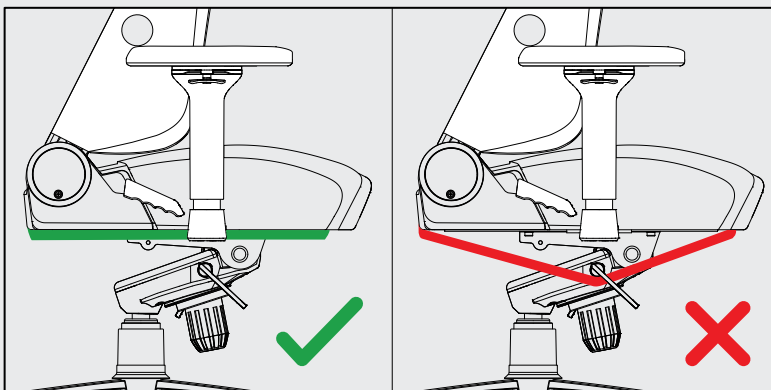
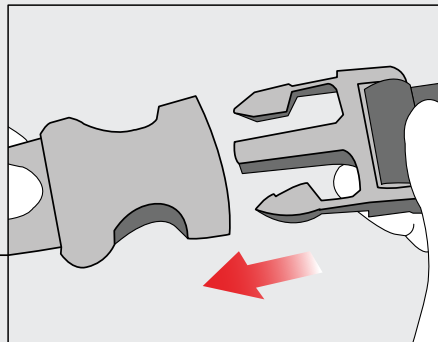
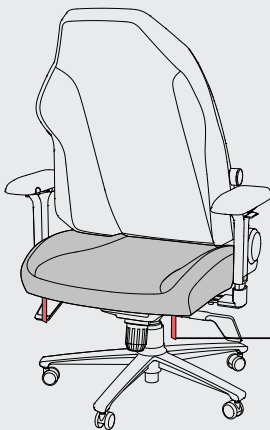
04

Slide seat base sleeve through the gap between the backrest and base. Gently tug the quick-release buckles to ensure a better fit.



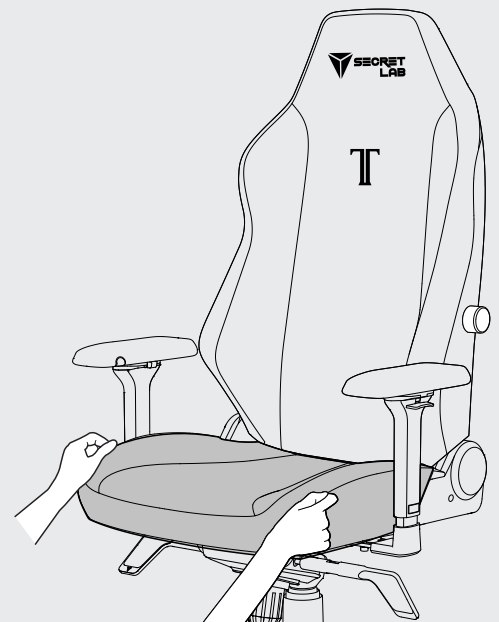
05

Clip and secure quick-release buckles below the seat base and ensure that the straps are placed above the tilt levers.



06

Adjust seat base sleeve for the best fit. Lightly tug the sleeve inwards or outwards to align the seams and accents of the sleeve with the edges of your chair.



DISASSEMBLY GUIDE

BACKREST SLEEVE DISASSEMBLY

01. Unzip the zippers located on the back of the backrest (bottom, left, right).
02. Pull and remove the backrest sleeve from the chair.

SEAT BASE SLEEVE DISASSEMBLY

01. Unclip the quick-release buckles below the seat base.
02. Use one hand to press down on and grip fabric located closest to the sleeve inserts. Use another hand to remove the sleeve inserts from the seat base. Remove the seat base sleeve off your chair.

AFTERCARE GUIDE

Cleaning and maintaining your Secretlab Chair Skins is quick and easy.



Follow the usage and installation instructions

Improper use and installation can damage your chair sleeves (backrest and seat base). Follow the usage and installation instructions to keep them in great condition for a long time.



Keep away from liquids

Any form of moisture is detrimental to the upholstery. Should there be any spills on your chair sleeves, remove them immediately to prevent liquid from seeping onto your chair.



Easy cleaning

Remove any visible dust before washing by using a vacuum cleaner or gently brushing with a dry microfiber cloth. Refer to the Washing Directions for detailed washing instructions.



Don't abuse it

Even the toughest of chair skins won't be able to stand up to rough usage. Avoid stretching the fabric excessively when installing the individual backrest and seat base sleeves.

WASHING DIRECTIONS



- Machine wash cold, gentle or delicate
- Wash inside out
- Close zippers before washing
- Tumble dry low
- Iron low heat
- Do not iron on decoration
- Do not dry bleach
- Do not bleach
- Do not mix with other laundry
- Do not wring

OTHER LANGUAGES



To view this manual in the following languages, please scan the QR Code to the left.

Pour consulter ce manuel dans les langues suivantes, veuillez scanner le QR code à gauche.

Um dieses Handbuch in den folgenden Sprachen anzuzeigen, bitte den QR-Code auf der linken Seite scannen.

Scan de QR-code aan de linkerzijde, om deze handleiding in de volgende talen te bekijken

Para ver este manual en otros idiomas, por favor escanea el Código QR de la izquierda.

Per visualizzare questo manuale nelle seguenti lingue, scansionare il Codice QR sulla sinistra.

For at se denne manual på følgende sprog, skal du scanne QR-koden til venstre.

Aby zobaczyć instrukcję w następujących językach, prosimy o zeskanowanie kodu QR po lewej stronie.

Skanna QR-koden till vänster för att se bruksanvisningen på följande språk.

本マニュアルを以下の言語でご覧になるには、左の QR コードをスキャンしてください。

이 설명서를 다음 언어로 보시려면 왼쪽에있는 QR 코드를 스캔하세요.

หากต้องการดูคู่มือนี้ในภาษาอื่น ๆ โปรดสแกน QR Code ทางด้านซ้าย

Untuk melihat manual ini dalam bahasa lain, scan code QR di sebelah kiri.

لعرض هذا الدليل باللغات التالية، يُرجى مسح رمز الاستجابة السريعة الموجود على اليسار.

NEED ANY HELP?



For additional support and full warranty terms and conditions, please scan the QR code or visit our website

secretlab.co/support