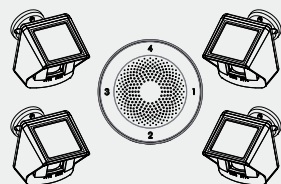


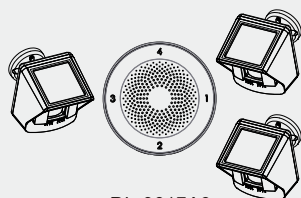
# Four-Zone Driveway Alarm

## User Manual



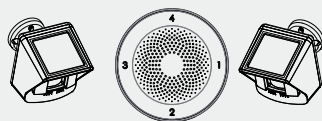
RL-9817A4

A



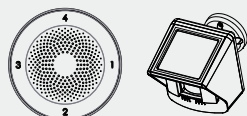
RL-9817A3

B



RL-9817A2

C

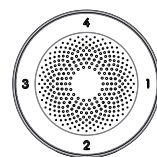


RL-9817A1

D

Version 1.0

## What's Included



Receiver \*1



Transmitter \* 1-4  
(built-in lithium battery)



Allen Key\*1



TYPE-C cable \*1



Screw Pack \* N

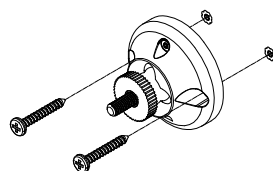
## Features

- Support up to 4 zones and 36 ringtones.
- 433MHz wireless frequency.
- 800m wireless distance (open area).
- PIR angle and sensitivity adjustable.
- Low battery indicator.

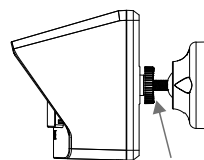
## Installation Instruction

### A. Transmitter Installation

1. Fix the chassis on the wall by using screws. Generally, the mounting height is 1.6m, you can also adjust the height according to your actual need.

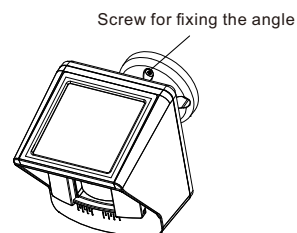


2. Screw the transmitter in bolt in clockwise direction, then screw the nut tight in anti-clockwise direction.



Screw the nut tight

3. Adjust the angle, make the PIR face toward the area where you want it to detect, then screw the unit tight by using the allen key.

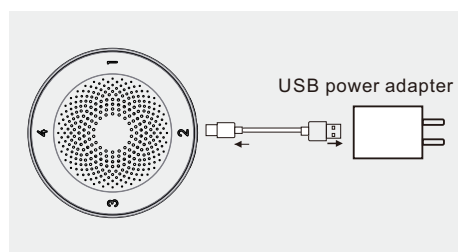


### NOTE:

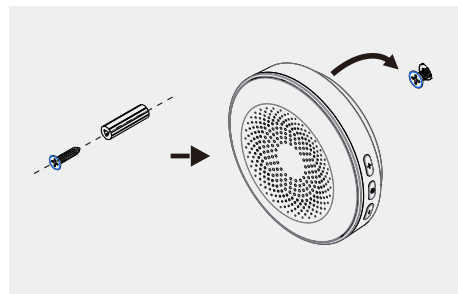
When choosing the location for the transmitter, to make sure it will receive sufficient direct sunlight/ reduce obstructions that may block the sun, the solar panel should be aimed toward the South.

## B. Receiver Installation

1. Install 4 x AA batteries, or connect the USB type C cable for power supply.

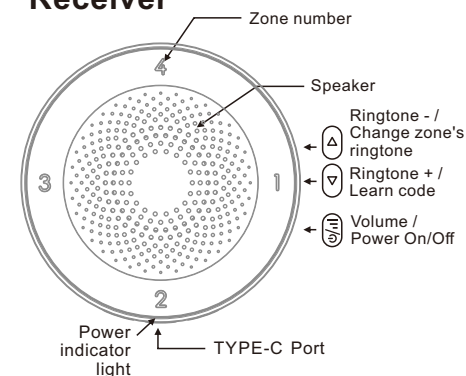


2. Plug the screw into wall via the anchor, then hang the unit onto the screw.

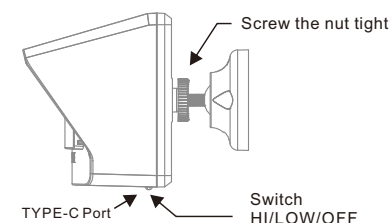


## Function Keys

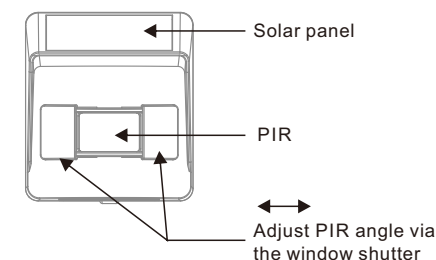
### Receiver



### Transmitter



HI/LOW/OFF represents to: PIR High sensitivity/PIR low sensitivity/Power off.




NOTE: Detection distance will be affected by the detection angle set. Therefore, adjust the angle properly according to your actual need.

### Working of transmitter

Each time the PIR is triggered, the PIR window will have blue light turning on. When charging the lithium battery via the type C port, the indicator light is solid red. Once charged fully, the indicator light becomes solid green.

## Operation Instructions


### Power on and off

long press “


### Normal mode

When the receiver receives the trigger signal from the zone's transmitter, it will sound the relevant zone ringtone and flash colorful indicator light for 30s.

### Volume Adjustment:


Press “

### Learn Code

In normal mode, press “

Each zone can only has one transmitter coded. To code the transmitter for other zones, simply repeat the instruction above.

### Change the zone's ringtone

In normal mode, press “

To change the ringtone for more zones, simply repeat the process above.


### Low battery reminder for transmitter

If the receiver receives the trigger signal from the zone's transmitter and if the zone number light flashes red, it means that the relevant transmitter is low battery. In this case, please replace batteries ASAP.

### Low battery reminder for receiver


When the receiver's battery level is < 4.0V, its power indicator light will flash red once every 3s. In this case, please replace batteries ASAP.

### Clear Code for a Single Transmitter

In normal mode, press “

To clear the code for more transmitters, simply repeat the process above.

### Clear Code for All Transmitters

In normal mode, press “

## Technical Parameters

### Transmitter

- Power Supply: Built-in 3.7V 600mAh lithium battery
- Solar Charging Current: Max. 80mA (It may vary depending on the sunlight intensity and remaining battery capacity.)
- Type C Port: Charging voltage DC 5V, Max.250mA
- PIR Sensing Range
  - LOW: Max 5±1m ,
  - HI: Max 10±1m
- PIR Sensing Angle: H:15° - 90° (adjustable via PIR window shutter)
- Working Current: <200mA
- Standby Current: <50uA
- Modulation: FSK
- Frequency: 433.92MHz
- Wireless Distance: ≥800m (Open Area)
- IP Rating: IPX5
- Working Temperature: -15~50°C
- Use Environment: Indoor or Outdoor
- Outline Size: 90\*79.9\*115.8 mm

### Receiver

- Power Supply: battery LR6\*4(DC6V) or via type C port DC 5V
- NOTE: When the type C voltage is greater than 6V, the receiver will automatically cut off type C power supply. When greater than 12V, the device will be damaged.
- Working Current: <300mA
- Standby Current: Max. <10mA, Average <350uA
- Volume (30cm)
  - Low: 64-70dB
  - Medium: 70-76dB
  - High: 76-82dB
  - Max: 82-88dB
- Power-Off Current: ≤10uA
- Working Temperature: -10~50°C
- Use Environment: Indoor
- Outline Size: Φ106\*30 mm

#### NOTICE:

This manual is for the purpose of product use and operation. Design and specifications are subject to change without notice.

## FCC Warnings

Warning: Changes or modifications to this unit not expressly approved by the party responsible for compliance could void the user's authority to operate the equipment.  
This device complies with Part 15 of the FCC Rules. Operation is subject to the following two conditions:  
(1) this device may not cause harmful interference  
(2) this device must accept any interference received, including interference that may cause undesired operation.

Shielded cables must be used with this unit to ensure compliance with the Class B FCC limits.

NOTE:  
This equipment has been tested and found to comply with the limits for a Class B digital device, pursuant to Part 15 of the FCC Rules. These limits are designed to provide reasonable protection against harmful interference in a residential installation.

This equipment generates, uses and can radiate radio frequency energy and, if not installed and used in accordance with the instructions, may cause harmful interference to radio communications.

However, there is no guarantee that interference will not occur in a particular installation. If this equipment does cause harmful interference to radio or television reception, which can be determined by turning the equipment off and on, the user is encouraged to try to correct the interference by one or more of the following measures:

- Reorient or relocate the receiving antenna.
- Increase the separation between the equipment and receiver.
- Connect the equipment into an outlet on a circuit different from that to which the receiver is connected.
- Consult the dealer or an experienced radio/TV technician for help.

To maintain compliance with FCC's RF Exposure guidelines, This equipment should be installed and operated with minimum distance between 20cm the radiator your body: Use only the supplied antenna.

