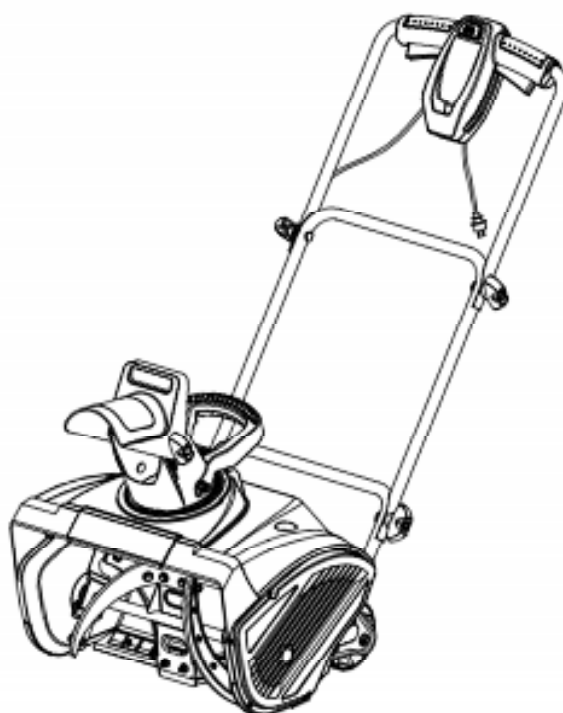




INSTRUCTION MANUAL

18" ELECTRIC SNOW THROWER

MODEL#DB5017



Have product questions or need technical support? Please feel free to contact us!

Website: www.Amerisuninc.com
www.PowerSmartUSA.com

Toll free: 1-800-791-9458 Mon-Fri 9-5 EST

Email: support@amerisuninc.com

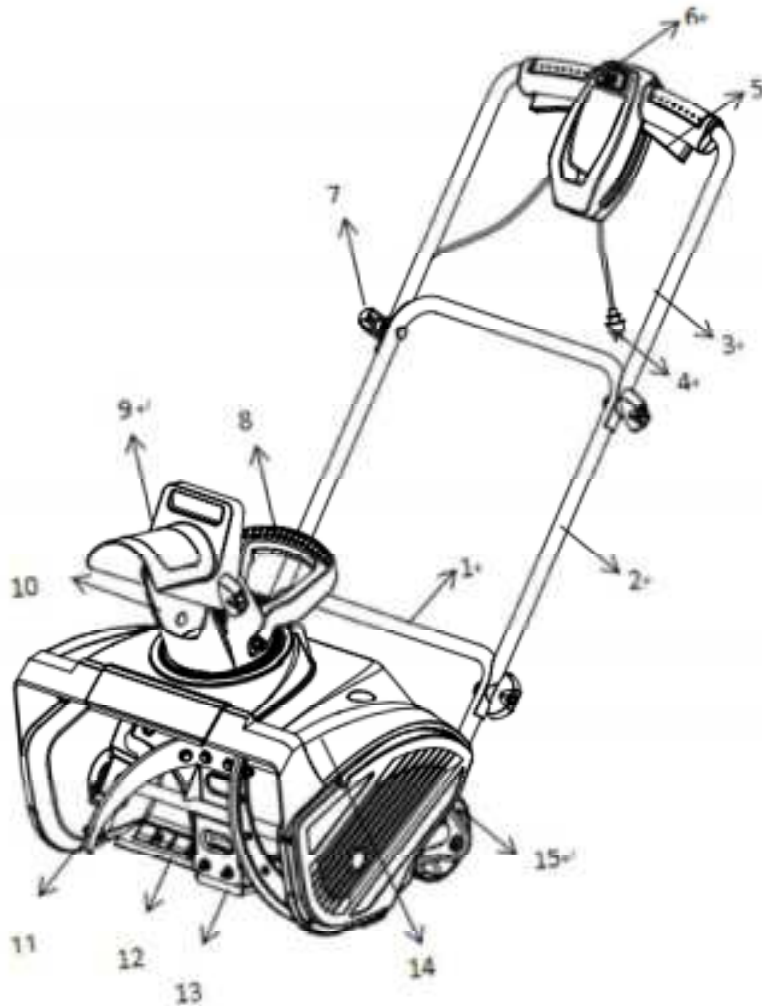
TABLE OF CONTENTS

Feature Identification	3
Hardware Contents	4
Safety Information	5
Preparation	7
Assembly Instructions	8
Operating Instructions	14
Care and Maintenance	20
Warranty	20

PRODUCT SPECIFICATIONS

SPECIFICATIONS
Voltage:120v,60Hz
Input Power:15Amp
Rotation speed:2,200 RPM
Clearing width and depth: Approx. 46 cm x 20 cm (18 in. x 8 in.)
Max. throwing distance: 10 m (30 ft.)
Net Wight:14.2kg(31.2lbs)

Feature Identification



- 1. Lower Tube
- 2. Middle Tube
- 3. Upper Tube
- 4. Polarized Plug
- 5. Anti-lock button
- 6. Switch housing
- 7. Knob
- 8. steering handle

- 9. Upper Chute
- 10. Lower Chute
- 11. Auger
- 12. Rubber Plate
- 13. Scraper
- 14. Main cover
- 15. Wheel



SAFETY INFORMATION

Please read and understand this entire manual before attempting to assemble, operate or install the product.

Work Area

- Keep work area clean and well-lit. Cluttered, dark areas invite accidents.
- Do not operate snow thrower in an explosive atmosphere, such as in the presence of flammable liquids, gases, or dust. Electrical appliances create sparks that may ignite the dust or fumes.
- Keep children, pets, and bystanders away from work area. Be aware that the normal noise of the machine when turned on may make it difficult for you to hear approaching people.

Electrical Safety

- Electrical plugs must match the outlet. Never modify the plug in any way. Do not use any adaptor plugs with grounded appliances. Unmodified plugs and matching outlets will reduce risk of electric shock.
- Avoid body contact with earthed or grounded surfaces such as pipes, radiators, ranges, and refrigerators. There is an increased risk of electric shock if your body is earthed or grounded.
- Do not abuse the cord. Keep cord away from heat, oil, sharp edges or moving parts. Damaged or entangled cords increase the risk of electric shock. Never carry the snow thrower by its cord or yank the cord to disconnect it from the electrical outlet.
- Replace or properly repair damaged cords. If cord is damaged in any manner while plugged in, pull the extension cord from the wall receptacle.
- Contact with water while operating the snow thrower can result in electric shock and serious bodily injury. Do not use the snow thrower in damp or wet locations or expose to rain. Do not handle the plug or the appliance with wet hands or while standing in water.
- Extension Cord - **WARNING** - Only use a UL-rated extension cord for **OUTDOOR, all-weather** use (usually orange color). The extension cord **MUST** be of the proper gauge size depending on it's length (see page 14). To prevent the extension cord from disconnecting during operation, tie it around the top right side of the middle frame before connecting it to the snow thrower as shown in Figure 2 on page 14.
- Turn off the power switch and disconnect the power cable before inspecting, servicing, repairing, or cleaning the snow thrower. Any such operation should be performed after revolving parts inside the snow thrower stop completely.
- Do not move or transport the snow thrower when the plug is connected to the power socket and the switch is turned on.

Personal Safety

- Stay alert - Watch what you are doing and use common sense when operating the snow thrower. Do not use the machine when tired, ill, or under the influence of drugs, alcohol, or medication. A moment of inattention may result in serious personal injury.
- Wear proper clothing - Wearing rubber boots offers additional protection from electric shock. Do not wear loose clothing or jewelry that may become caught in the machine. Wear protective headgear to keep hair away from revolving parts of the machine. Safety glasses offer better protection than everyday eyeglasses.
- Moving parts present risks - Keep your face, hair, clothing, hands and feet away from moving parts. All guards and safety attachments must be installed properly before using the unit. Shut off and disconnect cord before touching any parts other than the handles and switch.
- Surfaces - This snow thrower is intended for use on paved surfaces. Do not use on gravel, stone, or other unpaved surfaces unless the snow thrower is adjusted for such surfaces according to the instructions given in the operators manual.
- Avoid accidental starting - Make sure the switch is in the off position before plugging in the unit. Do not carry the snow thrower with your finger on the switch.

SAFETY INFORMATION



- **Body position** - Maintain proper footing and balance at all times. Place heels firmly on the ground and tightly grasp the handle bar. Watch for uneven surfaces and do not overreach. In case you fall or collide with the snow thrower, inspect the unit for damage. When stepping backwards, be careful to avoid obstacles beneath your feet or behind you to avoid falling.

Snow thrower Use and Care

- **Know your snow thrower** - Familiarize yourself with the main parts of your snow thrower. Read the operators manual carefully. Learn your snow throwers applications and limitations as well as the specific potential hazards related to this machine. Do not use this machine for any purpose other than the one for which it was designed. Otherwise, it may cause mechanical defaults, serious damage or personal injury.
- **Preliminary unit inspection** - Thoroughly inspect the unit before use. Make sure all the parts are secure and installed correctly. If you notice any abnormalities, do not use the machine until it has been properly repaired. Always perform a test run the first time you use the snow thrower or after replacing parts to ensure that the unit is functioning properly.
- **Preliminary area inspection** - Clear the area to be plowed before each use. Remove all objects such as rocks, broken glass, nails, wire, or string, which can be thrown by or become entangled in the snow thrower. Keep the area of operation clear of other people and pets.
- **Excessive force** - The snow thrower was designed to respond at a certain rate for various snow conditions for optimum safety and performance. Do not force it; keep pressure constant.
- **Malfunctioning switch** - Do not use the snow thrower if the switch does not turn it on and off. Any electrical appliance that cannot be controlled by the switch is not safe to use and must be repaired.
- **Hitting an object** - If the snow thrower accidentally strikes an object, stop the snow thrower; inspect for damage; repair or replace any damaged part before restarting and operating the snow thrower.
- **Discharge chute safety** - Never direct the snow discharge chute at the operator, at bystanders, at vehicles or at windows. Thrown snow and foreign objects accidentally picked up by the snow thrower can cause serious damage and personal injury. Do not use your hands to unclog the discharge chute. Stop the motor before removing debris.
- **Abnormal operation** - If you notice the snow thrower running in an unstable state or hear abnormal sounds from the engine, stop the machine, disconnect the power immediately, and contact your original distributor.
- **Noise control** - When using the snow thrower, you must respect local laws and regulations regarding noise control and environmental protection. To avoid noise disturbance, you should carefully decide upon an appropriate operation time and consider the surrounding conditions.
- **When work is completed** - Disconnect the snow thrower from the power source when not in use, when changing accessories, and before performing any maintenance.
- **Store safely** - Store snow thrower indoors in a dry area between uses. Keep in a locked area where children and unauthorized users cannot gain access. Do not store the machine while it is still connected to the power source. It may cause damage and injury.
- **Maintain for safety and longevity** - Check for misalignment or binding of moving parts, breakage of parts, and any other conditions that may affect the units operation. If damaged, repair or replace the damaged part before use. Use only those replacement parts made for your model. When replacing any parts, you must strictly observe the instructions and procedures described in this manual. Special care should be paid to any rubber parts, since these parts may increase the engine load and decrease its mechanical power if damaged.

SAFETY INFORMATION

PRODUCT LABELS

WARNING - Read, understand and follow all safety labels and markings on the unit.



CAUTION

- Inspect wiring, which, if damaged during shipping, may cause serious bodily injury during equipment use. If any damage is seen or suspected, do not assemble. Instead, contact our customer service department at 1-800-791-9458.
- Handle with care during assembly so that electrical wiring does not become damaged.

PREPARATION

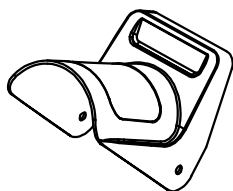
Before beginning assembly of product, make sure all parts are present. Compare parts in package to hardware contents on page 4.

Tools required for assembly Phillips screwdriver and 7 mm wrench.

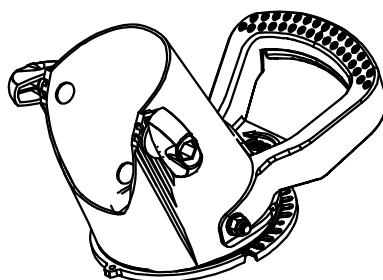
ASSEMBLY INSTRUCTIONS

1.Remove the machine and accessories from the packing box

Upper Chute

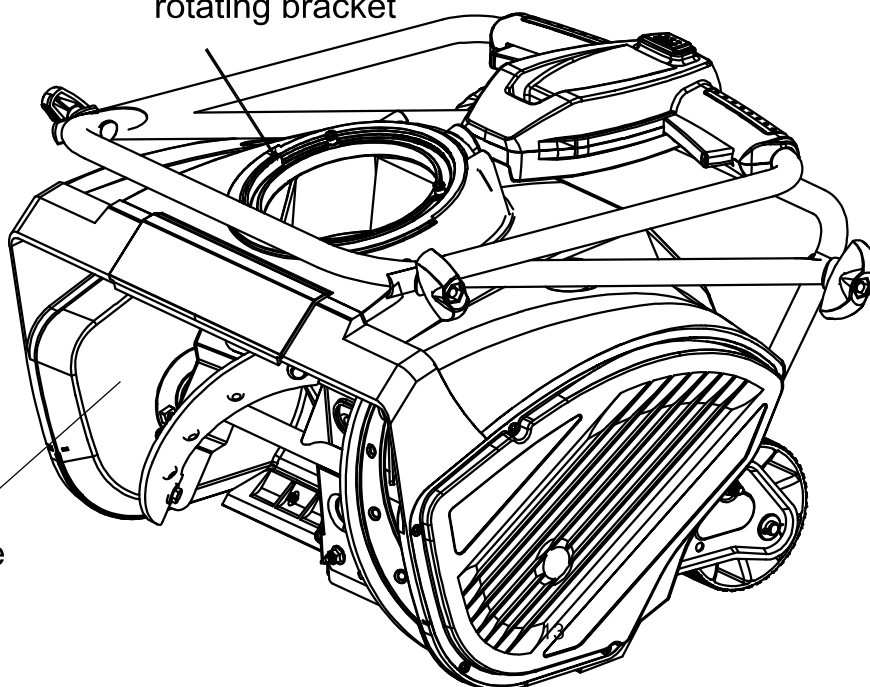


Lower Chute assembly



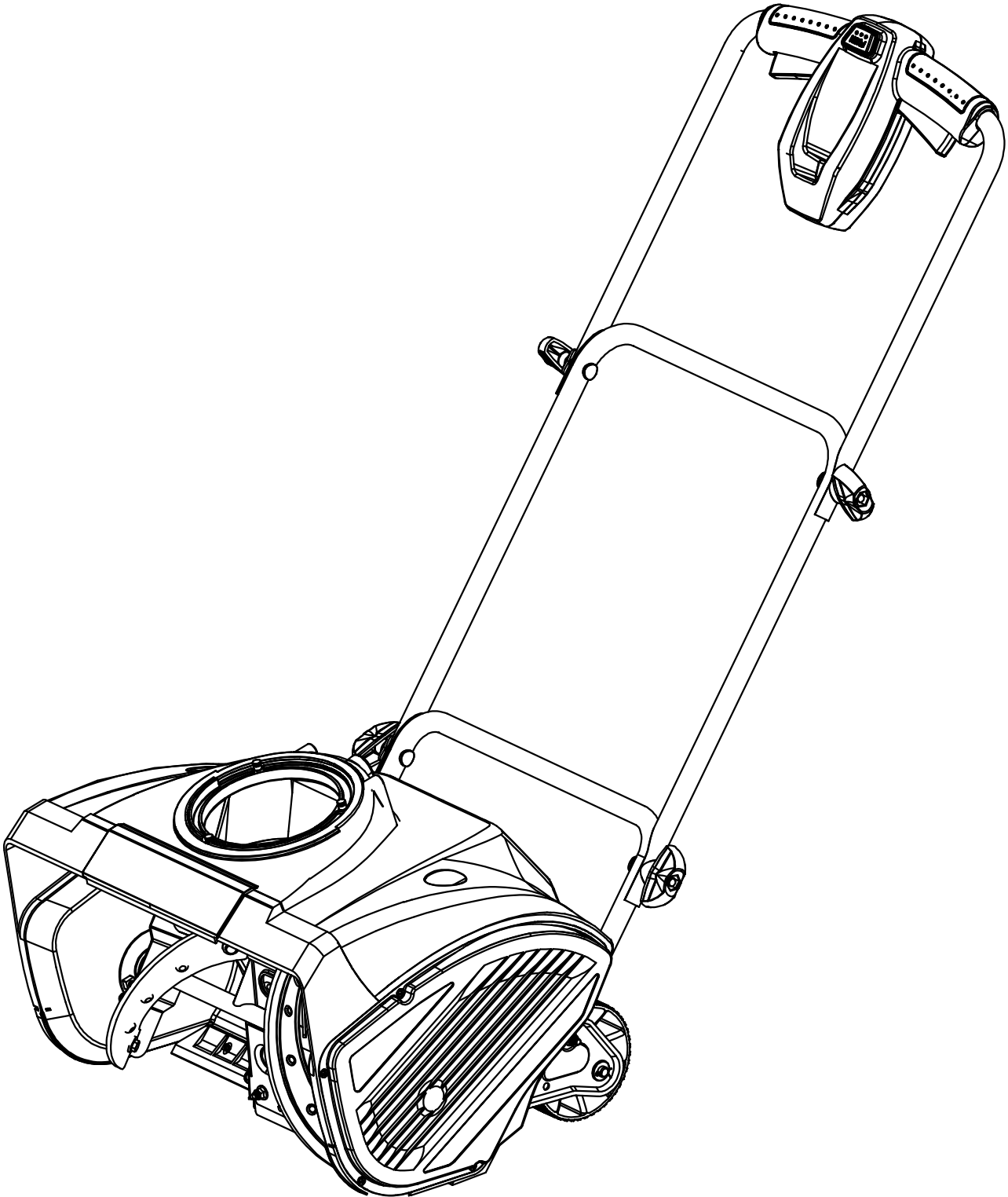
rotating bracket

Machine



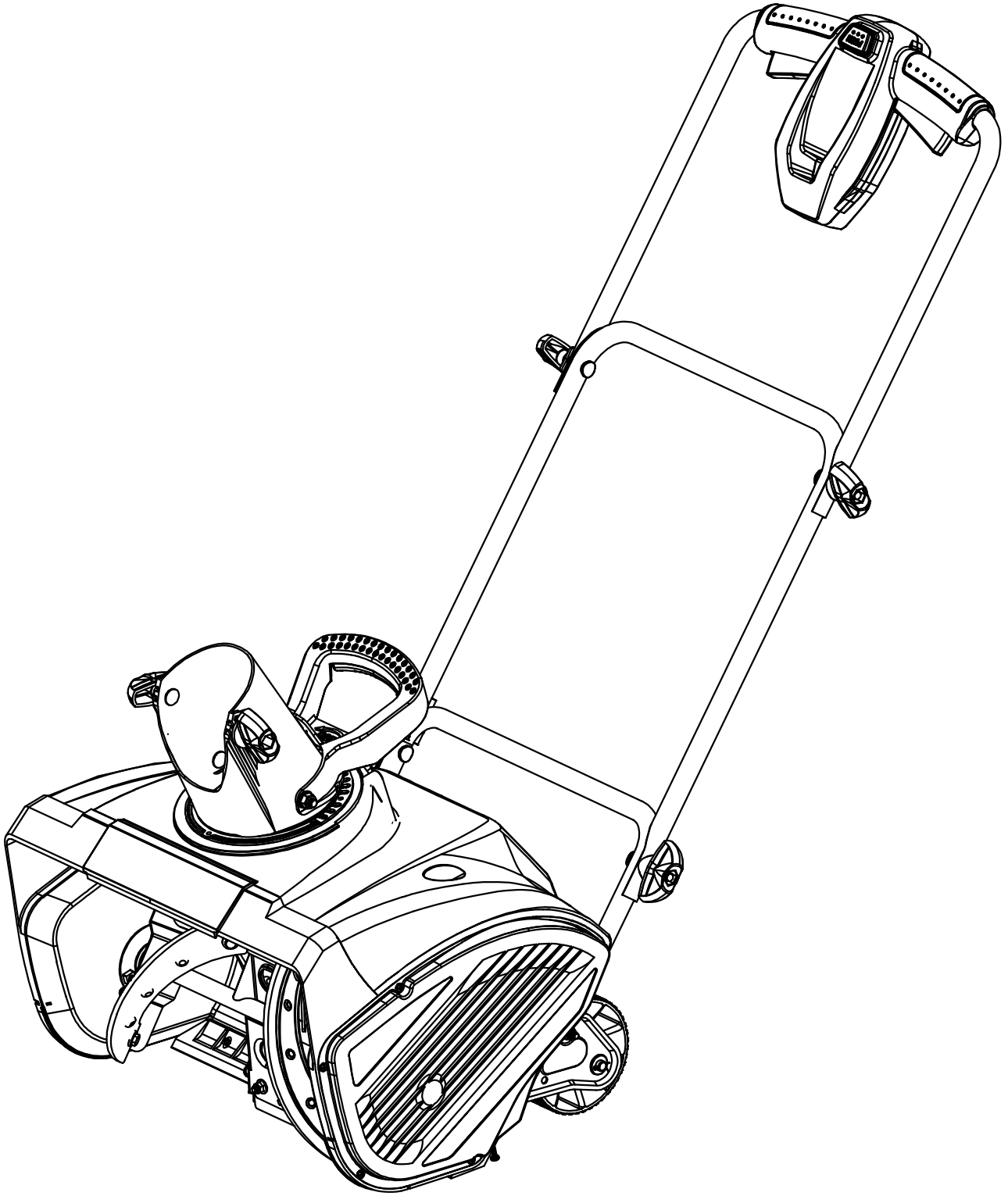
ASSEMBLY INSTRUCTIONS

2. Place the folded tube in the position shown below and tighten the knobs



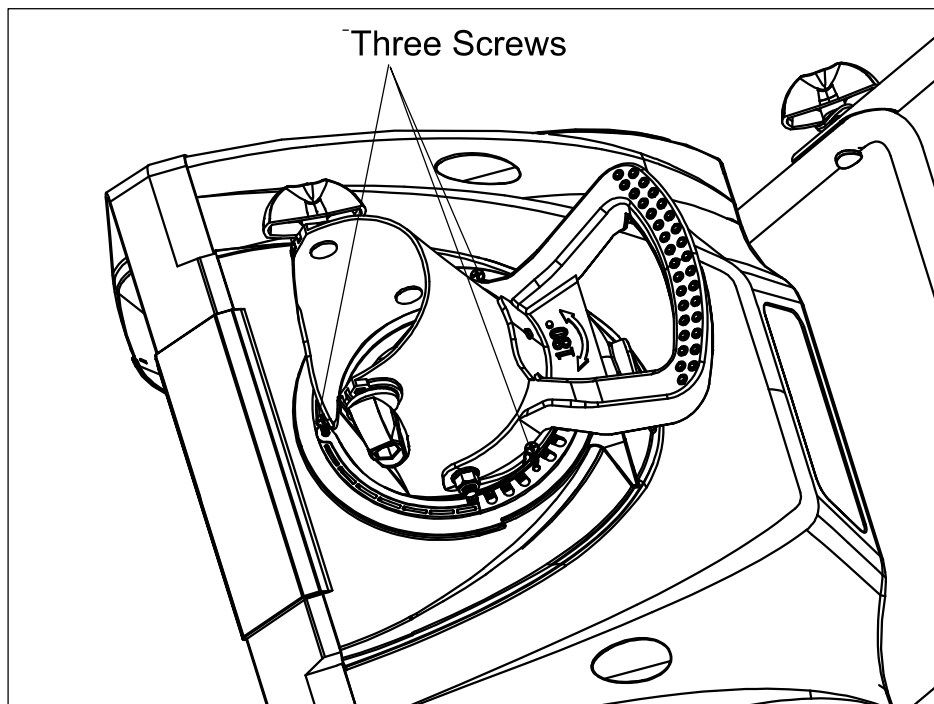
ASSEMBLY INSTRUCTIONS

3. Place the lower Chute assembly on the rotating bracket



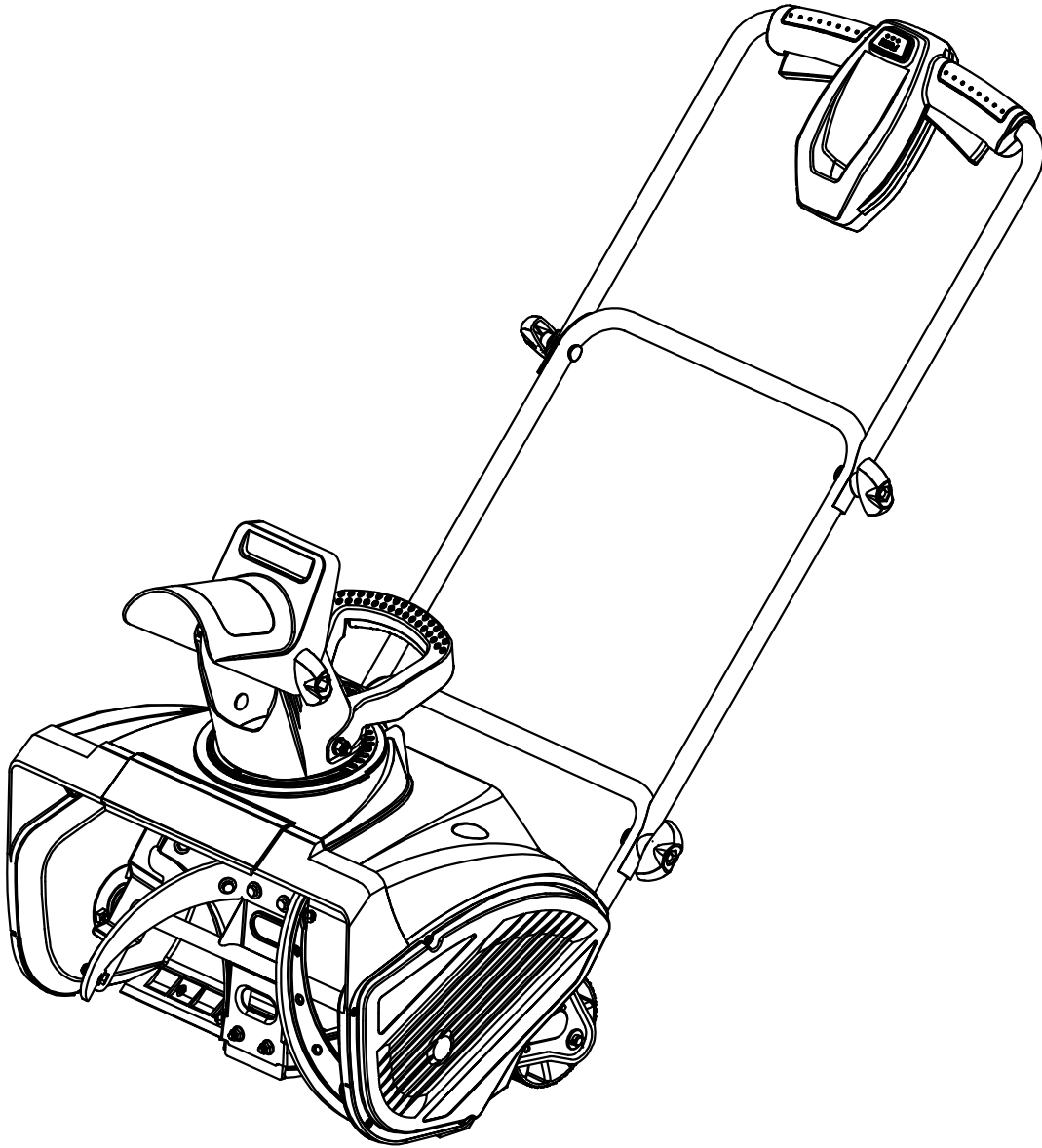
ASSEMBLY INSTUCTIONS

4. Use three screws to lock the Chute assembly into rotation bracket



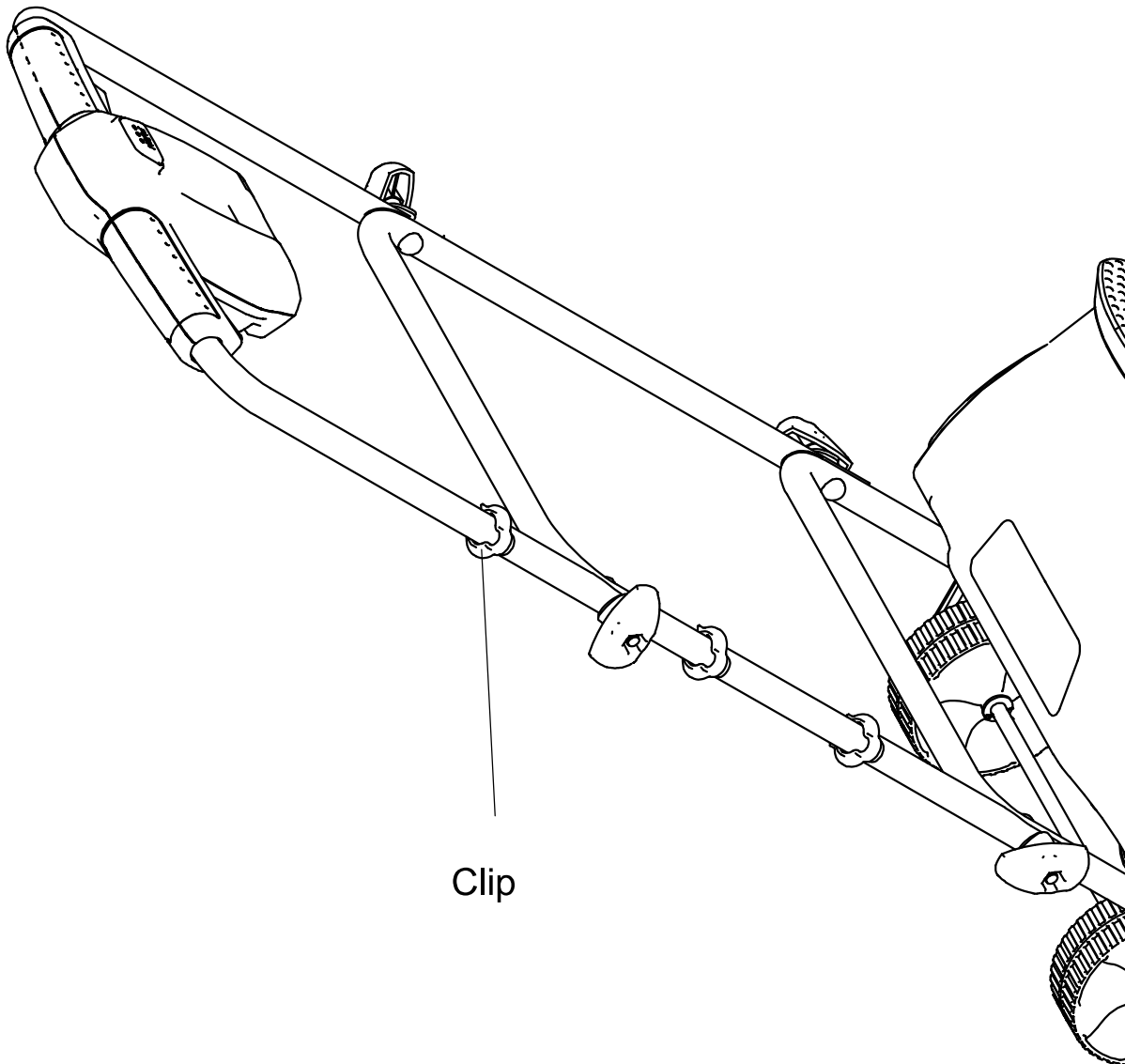
ASSEMBLY INSTRUCTIONS

5. Install the upper chute to the lower chute assembly and turn the knobs



ASSEMBLY INSTRUCTIONS

6. Locate the three cable clips in the parts bag. Secure the power cord to the frame of the unit by clipping them onto the frame at evenly spaced intervals



OPERATING INSTRUCTIONS

Note: Before using this machine, make sure that the power source you will use complies with the specification's detailed in this manual. Before inserting the plug into the socket, verify that the snow throwers auger and scraper are firmly attached with screws. Perform a test run to ensure that the rotor turns freely.

SECURING THE EXTENSION CORD

1. For safe and efficient use of your snow thrower, use only a UL-rated extension cord recommended for outdoor use. Refer to the Extension Cord Chart below.



WARNING

Electric shock may cause **SEVERE INJURY** or **DEATH**. Heed these warnings:

- Do not allow any part of snow thrower to make contact with water while powered on. If the appliance becomes wet while turned off, wipe dry before starting.
- Use only a UL-rated extension cord for outdoor, all-weather use. Do not use an extension cord more than 150 feet (46 meters) long.
- Don't touch the appliance or its plug with wet hands or while standing in water. Wearing rubber boots offers some protection.

EXTENSION CORD CHART

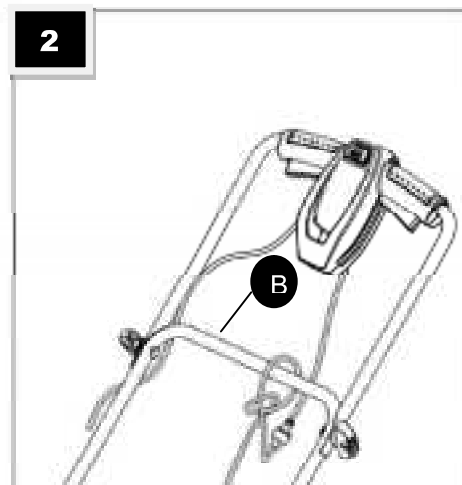
Cord length is:	Up to 100 ft. (30 m)	100-150 ft. (30-46 m)
Wire gauge is:	14	12

2. To prevent the extension cord from disconnecting during use, tie the female end of the extension cord into a loose knot on the top right side of the middle frame (B) before connecting to the male plug in the socket of the snow thrower.

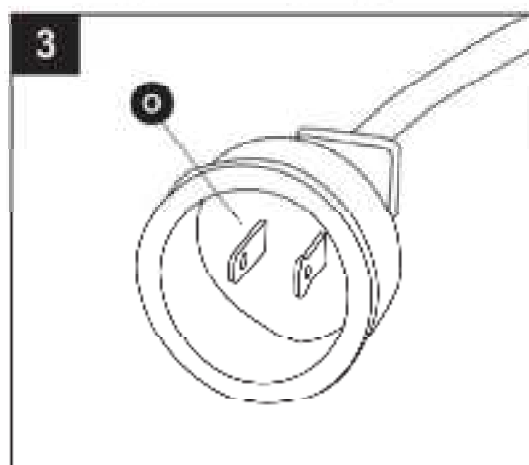
Note: The protective cover around the polarized plug is compatible with most extension cords. When choosing an extension cord be sure the female end of your cord will fit into the polarized plug.

3. Note that the snow thrower has a polarized male plug (O), with one prong in the socket slightly longer and wider than the other. The extension cord female end should be likewise polarized, so that the extension cord fits snugly into the socket.

2



3



OPERATING INSTRUCTIONS

WARNING

Damaged electrical cords present risk of fire, electric shock, and serious bodily injury.

Before operating the snow thrower, carefully examine the electrical cord. If the cord is damaged, do not use the snow thrower. Replace or repair the damaged cord immediately. If you need assistance, contact our customer service department at 1-800-791-9458.

POWERING ON AND OFF

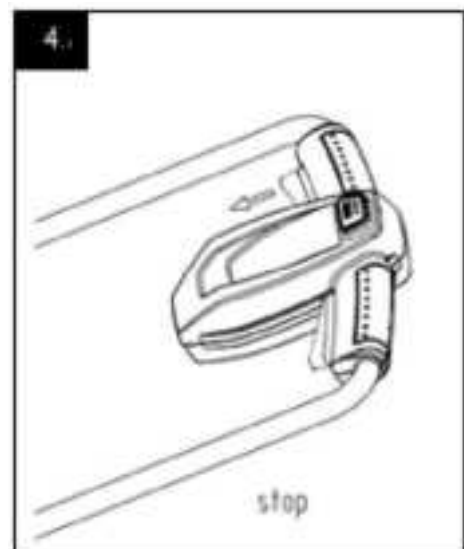
1. Connect extension cord to the male plug on the snow thrower then connect extension cord to proper AC power source.

2. Press and Hold the start switch button



3. To start, while holding the start switch button in, pull the handle bar toward you until it touches the handle. The start switch button must be pressed in and held before pulling the handle. Once the snow thrower starts, release the start switch button

4. To stop, Hold switch lever, Release starter button.



OPERATING INSTRUCTIONS

MOVING THE MACHINE AND PLOWING THE SNOW



WARNING

Foreign objects, such as rocks, broken glass, nails, wire, or string, can be picked up and thrown by the snow thrower, causing serious personal injury.

Remove all foreign objects from the area to be plowed before operating the snow thrower.

- Keep the area of operation free of foreign objects that can become thrown by the rotor blades.
- Perform a thorough inspection of the area since some objects may be hidden from view by surrounding snow. If the snow thrower hits an obstruction or picks up a foreign object during use, stop the snow thrower, disconnect the extension cord, remove the obstruction, and inspect the unit for damage. Repair or replace any damaged part before restarting and operating the unit.
- Keep children, pets, and bystanders away from the area of operation. Be aware that the normal noise of the machine when turned on may make it difficult for you to hear approaching people.
- When moving the snow thrower, use the wheels on one side as the pivot point. Slightly tilt the snow thrower on this pivot point to move it forward or backward.
- Start your clearing path near the electrical outlet and work outward, throwing snow in a back and forth motion. To clear in the opposite direction, step over the cord and pivot the snow thrower on its wheels. Make sure to overlap clearing paths.
- Note wind direction. If possible, move in the same direction as the wind so that the snow is not thrown against the wind (and thus back into your face and back onto the path).
- While moving the snow thrower, do not drag the power cable violently or roughly. The snow thrower should move within the range that the cable can reach.
- Do not push the snow thrower with excessive force. You should push the machine gently and evenly in accordance with the unit's throw rate.
- Do not apply additional man-made load to the engine since this may cause engine damage.
- Some parts of the snow thrower may freeze under extreme temperature conditions. Do not attempt to operate the snow thrower with frozen parts. If the parts freeze while the snow thrower is in use, stop the snow thrower, unplug the extension cord, and inspect for frozen parts. Free all parts before restarting or operating the snow thrower. Never force controls that have frozen.
- Working on pebbles, gravel, or unpaved surfaces - To avoid throwing loose surface material along with the snow, push down on the handle to raise the scraper at the base of the unit above the pebbles or gravel.

OPERATING INSTRUCTIONS

CHANGING THROW DIRECTION AND THROW HEIGHT

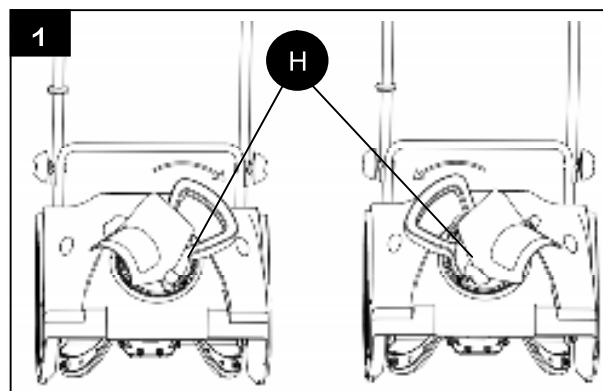


WARNING

Never direct the snow discharge chute at the operator, at bystanders, at vehicles or at nearby windows. Discharged snow and foreign objects accidentally picked up by the snow thrower can cause serious damage and personal injury.

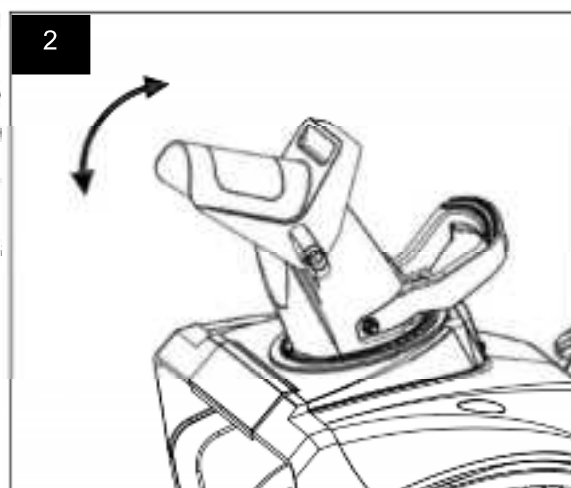
Always orient the discharge chute in the opposite direction from where you, bystanders, surrounding vehicles, or windows are located.

1. The discharge chute (H) can be adjusted 180 degrees by rotating the chute crank. Rotate the chute control crank clockwise to move the discharge chute (H) to the left, counterclockwise to move the chute to the right.



2. The chute deflector (G) on the top of the discharge chute (H) controls the height of the snow stream. Loosen both chute deflector knobs to raise or lower the deflector to the desired height you wish to throw the snow. Tighten the knobs to secure the deflector.

Note: Do not over tighten the chute deflector knobs.

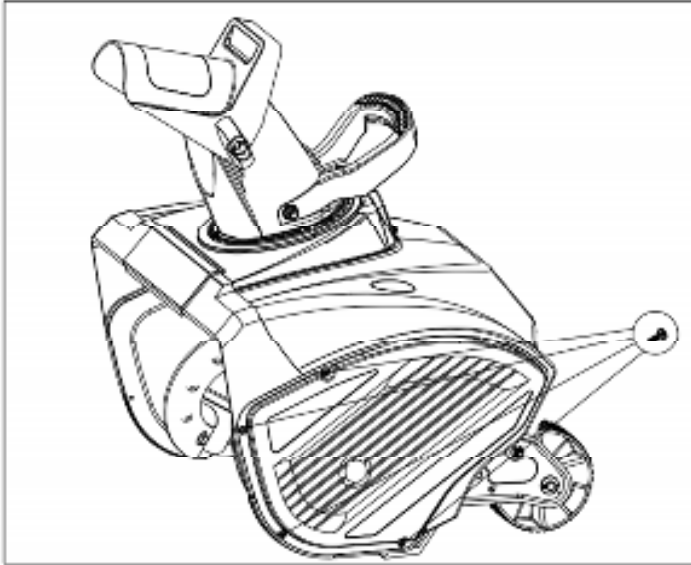


DRIVE BELT REPLACEMENT

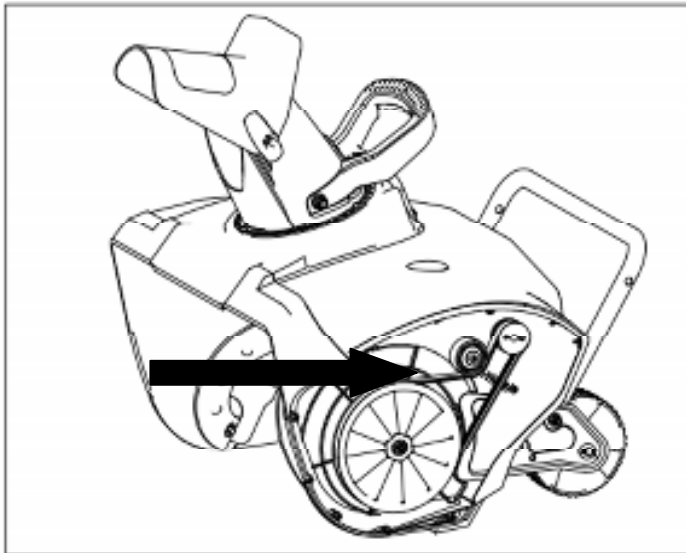
WARNING Entanglement Hazard - Before performing any service procedures, make sure the snow thrower is disconnected from the power source.

Note: Record component position before disassembly, to assist in reassembly.

1. Using Phillips screwdriver, remove 4 screws attaching belt cover to housing.



2. Manually push the belt tension pulley up to reduce belt tension.



Note: When replacing the belt it is important to determine the cause of the failure (if applicable) and take corrective action to avoid repeated failure.

3. Inspect the old belt, pulleys and tension spring before installing a new belt for damage and wear, replace parts as required.

4. Inspect the new belt to ensure it is the correct size and type.
 - Original – Part Number 5PJ670
5. Manually push the belt tension pulley up to allow installation of the new belt.
6. Position the belt onto the small drive pulley, then while holding the belt tension pulley away from the belt, carefully wind the belt onto the large pulley. Do not damage the new belt during installation.
7. Using Phillips screwdriver, install 4 screws attaching belt cover to housing

TROUBLESHOOTING.

Problem		Possible Causes		Remedy
WARNING - Before attempting to make any inspections, repairs or adjustments, stop the snow thrower, wait for all moving parts to stop moving and carefully disconnect the AC extension cord from the power source.				
No start condition, won't not turn on	1	No power from AC power source	1	Connect to known good AC powersource
	2	Extension cord not connected	2	Securely connect extension cord at power source and snow thrower
	3	Extension cord faulty	3	Connect a known good extension cord
	4	Improper starting procedure	4	Review "Powering ON and OFF" procedure in this manual
	5	Auger damaged or blocked	5	Check auger for damage, blockage or frozen condition, repair as required
	6	Faulty switch, wiring or motor	6	Call customer service or contact service center
Turns on, but won't blow snow	1	Auger damaged or blocked	1	Check auger for damage, blockage or frozen condition, repair as required
	2	Chute blocked or damaged	2	Check chute for damage or blockage, repair as required
	3	Drive belt damaged or loose	3	Check drive belt condition, repair as required (drive belt is located on left side behind cover)
Turns on, but won't run at full speed	1	Extension cord faulty	1	Connect a known good extension cord
	2	Improper extension cord	2	Check extension cord length and gauge for use in proper application, Review "Extension Cord Chart" in this manual
	3	Auger damaged or blocked	3	Check auger for damage, blockage or frozen condition, repair as required
	4	Drive belt damaged or loose	4	Check drive belt condition, repair as required (drive belt is located on left side behind cover)
	5	Faulty wiring or motor	5	Call customer service or contact service center
Chute crank handle will not turn chute or is hard to turn	1	Damaged chute crank rod or crank gear.	1	Check chute crank rod and gear (where lower rod connects under chute) for damaged or bent parts, repair as needed.
	2	Chute crank rod eye guide assembled incorrectly, binding chute crank rod.	2	Check installation of middle frame. If middle frame is installed upside-down, the chute crank rod eye-bolt will not line up when installing the chute crank rod, see step 1 in assembly instructions.

CARE AND MAINTENANCE



WARNING

Make sure to turn off the switch and disconnect the extension cord before performing any maintenance task on your snow thrower.

- Run the snow thrower for a few minutes to melt away any snow on the snow thrower. Turn the snow thrower's power off.
- Disconnect the extension cord from the snow thrower.
- Examine the extension cord thoroughly for signs of wear or damage. Replace it if it is worn or damaged.
- Examine the snow thrower thoroughly for worn, loose bolts or damaged parts. For repairing or replacing parts, contact customer service.
- Store the extension cord with the snow thrower.
- Store the unit in a locked and dry or high and dry place to prevent unauthorized use/damage and keep out of the reach of children. Store the instruction manual along with unit for future use.

WARNING

ONE YEAR WARRANTY

For one year from date of retail purchase within U.S.A., the manufacturer will, at its option, repair or replace, for the original purchaser, free of charge, any part or parts found to be defective in material or workmanship. This warranty covers units which have been operated and maintained in accordance with the owner's instructions furnished with the unit, and which have not been subject to misuse, abuse, commercial use, neglect, accident improper maintenance or alteration.

Personal use: THE FOREGOING PARAGRAPHS CONSTITUTE THE MANUFACTURER'S ENTIRE WARRANTY WITH RESPECT TO ANY PRODUCT PURCHASED AND USED FOR PERSONAL/FAMILY, HOUSEHOLD/RESIDENTIAL PURPOSES, AS DISTINGUISHED FROM COMMERCIAL USAGE.

Commercial use: ALL APPLICATIONS OTHER THAN PERSONAL USE AS OUTLINED ABOVE, ARE CONSIDERED COMMERCIAL USAGE

To Obtain Service: Contact the Amerisun customer service department 1-800-791-9458 or e-mail support@amerisuninc.com. Also visit Amerisuninc.com for additional information.

Other Warranties: All other warranties, express or implied, including any implied warranty of merchantability is limited in its duration to that set forth in this express limited warranty. The provisions as set forth in this warranty provide the sole and exclusive remedy of the manufacturer's obligations arising from the sale of its products. The manufacturer will not be liable for incidental or consequential loss or damage. Some states do not allow exclusions of incidental or consequential damages, so the above exclusions may not apply in all states. This warranty gives you specific legal rights in your state, which vary from state to state.