

Quick Start Guide

KW2 RX Receiver

In the Box

In der Schachtel | Dans la boîte | En la caja | ボックス内 | 包装箱内容物 | 包装箱内容物 | 상자 내부



×1



×1

- Optical cable (1 m)
- Optisches Kabel (1 m)
- Câble optique (1 m)
- Cable óptico (1 m)

- 光ケーブル (1 m)
- 光纜 (1 m)
- 光纖纜線 (1 m)
- 광 케이블 (1 m)



×1

- USB-C power cable (1 m)
- USB-C-Netzkabel (1 m)
- Câble électrique USB-C (1 m)
- Cable de alimentación USB-C (1 m)

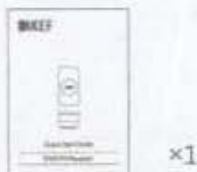
- USB-C 電源ケーブル (1 m)
- USB-C 电源线 (1 m)
- USB-C 電源線 (1 m)
- USB-C 전원 케이블 (1 m)



×1

- 3.5 mm AUX to RCA Cable (1 m)
- 3,5 mm AUX auf RCA Kabel (1 m)
- Câble AUX vers RCA de 3,5 mm (1 m)
- Cable AUX a RCA de 3,5 mm (1 m)

- 3.5 mm AUX - RCAケーブル (1 m)
- 3.5 mm AUX 转 RCA 电缆 (1 m)
- 3.5 mm AUX 轉 RCA 纜線 (1 m)
- 3.5mm AUX-RCA 케이블 (1 m)



×1

- Printed materials
- Druckerzeugnisse
- Documents imprimés
- Materiales impresos

- 印刷材料
- 印刷材料
- 印刷材料
- 인쇄물



×2

For KC92 / KC62 /
Kube MIE / KF92

- Screw sets
- Schraubensatz
- Jeu de vis
- Juego de tornillos

- ネジセット
- 螺钉組
- 螺絲套裝組
- 나사 세트



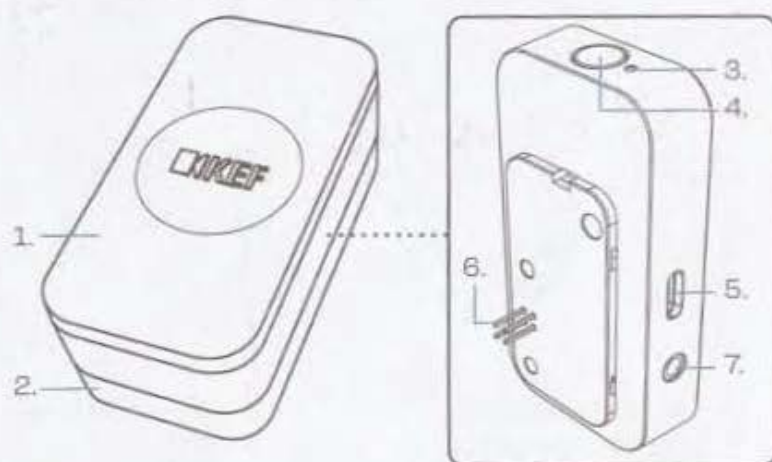
×1

For Kube 8b / 10b / 12b

Controls and Connections

Bedienelemente und Anschlüsse | Commandes et connexions | Controles y conexiones |

コントロールと接続 | 控件和连接口 | 控制與連線 | 상자 내부



1. Top cover
2. Bottom plinth
3. LED indicator
4. Pairing button
5. USB-C power supply
6. Proprietary audio output (for KEF subwoofers*)
7. AUX/Optical combo 3.5 mm audio output (for non-KEF subwoofers)

1. Obere Abdeckung
2. Unterer Sockel
3. LED-Anzeige
4. Paarungstaste
5. USB-C-Stromversorgung
6. Proprietärer Audioausgang (für KEF-Subwoofer*)
7. 3,5 mm-Kombi-Audioausgang (AUX/Optik) (für Nicht-KEF-Subwoofer)

1. Couvercle supérieur
2. Socle inférieur
3. Témoin LED
4. Touche de couplage
5. Bloc d'alimentation USB-C
6. Sortie audio propriétaire (pour les caissons de basse KEF*)
7. Sortie audio combo AUX/optique 3,5 mm (pour les caissons de basse autres que KEF)

1. Cubierta superior
2. Plinto inferior
3. Indicador LED
4. Botón de emparejamiento
5. Fuente de alimentación USB-C
6. Salida de audio patentada (para subwoofers KEF*)
7. Salida de audio para combo AUX/Optical de 3,5 mm (para subwoofers no KEF)

1. トップカバー
2. 下部台座
3. LEDインジケータ
4. ペアリング・ボタン
5. USB-C 電源
6. 専用のオーディオ出力 (KEFサブウーファー*専用)
7. AUX/光学コンボ3.5mmオーディオ出力 (非KEFサブウーファー用)

1. 頂蓋
2. 底座
3. LED 指示灯
4. 配对按钮
5. USB-C 电源
6. 专有音频输出端口 (用于 KEF 超重低音扬声器*)
7. 复合式 AUX/光纤 3.5 mm 音频输出端口 (用于非KEF超重低音扬声器)

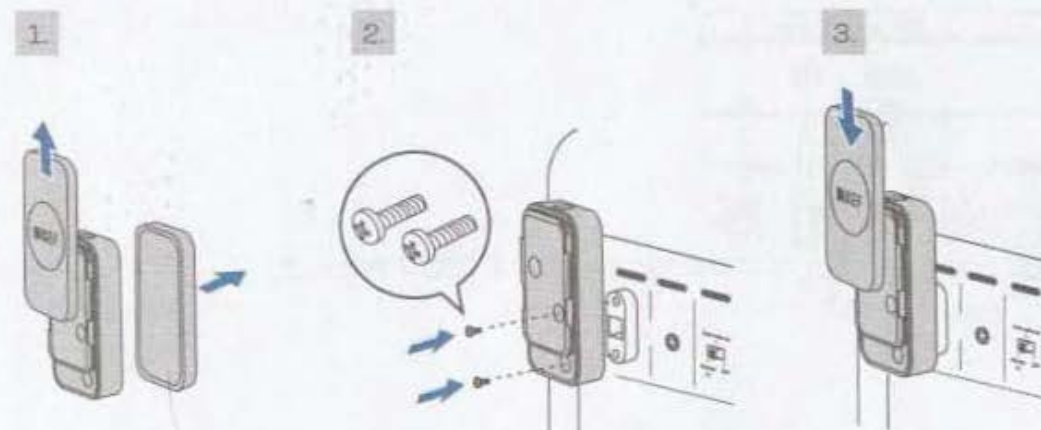
1. 頂部蓋板
2. 底座
3. LED 指示燈
4. 配對按鈕
5. USB-C 電源
6. 專屬音頻輸出口 (KEF超低音揚聲器*專用)
7. AUX/光纖混合 3.5 mm 音頻輸出口 (適用於非KEF超低音揚聲器)

1. 상단 커버
2. 하단 받침대
3. LED 표시등
4. 페어링 버튼
5. USB-C 전원 공급 장치
6. 전용 오디오 출력 (KEF 서브우퍼*용)
7. AUX/광학 콤보 3.5mm 오디오 출력 (비 KEF 서브우퍼용)

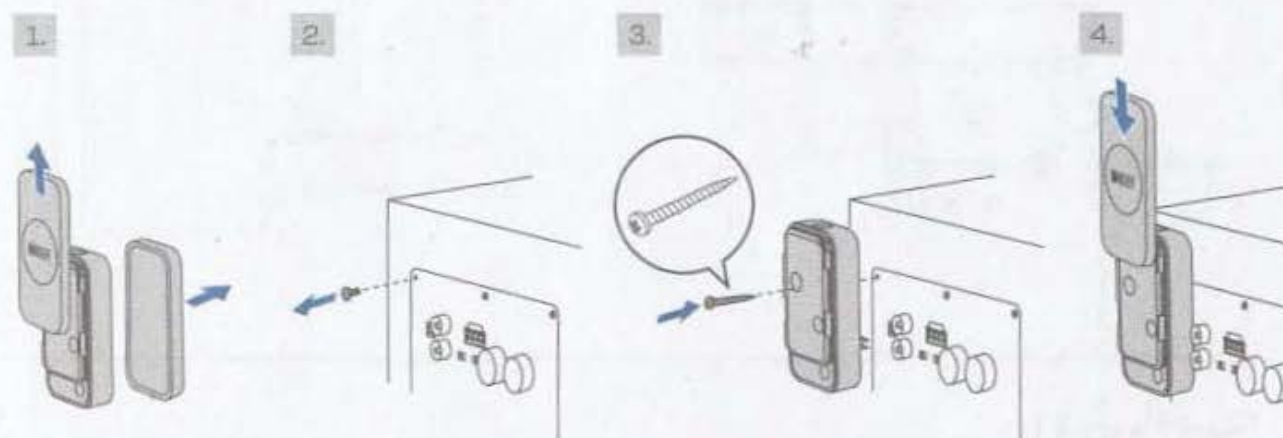
Connecting to KEF Subwoofers

Anschluss an KEF-Subwoofer | Connexion aux caissons de basse KEF | Conexión a Subwoofers KEF | KEFサブウーファーへの接続 | 连接 KEF 超重低音扬声器 | 連線至 KEF 超低音揚聲器 | KEF 서브우퍼에 연결

KC92 / KC62 / Kube MIE / KF92



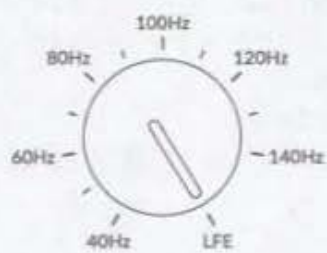
Kube 8b / 10b / 12b



Subwoofer setting: LFE | Subwoofer-Einstellung: LFE | Réglage du caisson de basse: LFE |

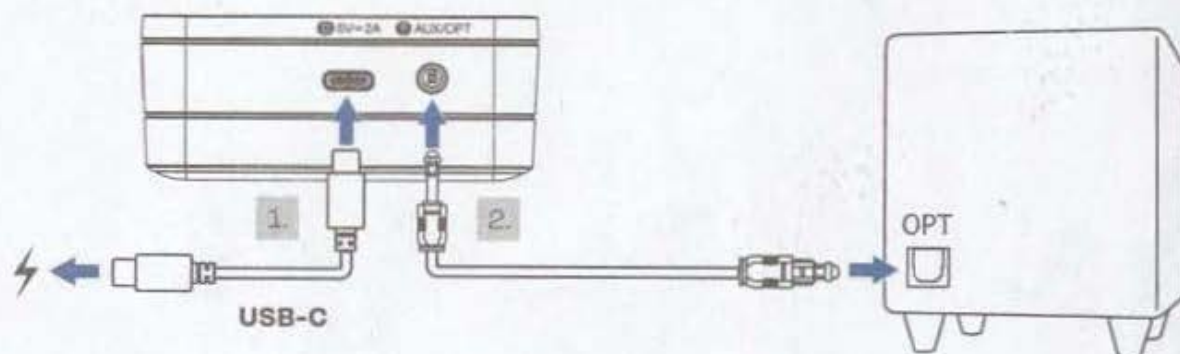
Ajuste del subwoofer: LFE | サブウーファー設定: LFE | 超重低音扬声器设置: LFE | 超低音揚聲器設定: LFE | 서브우퍼 설정: LFE

MANUAL

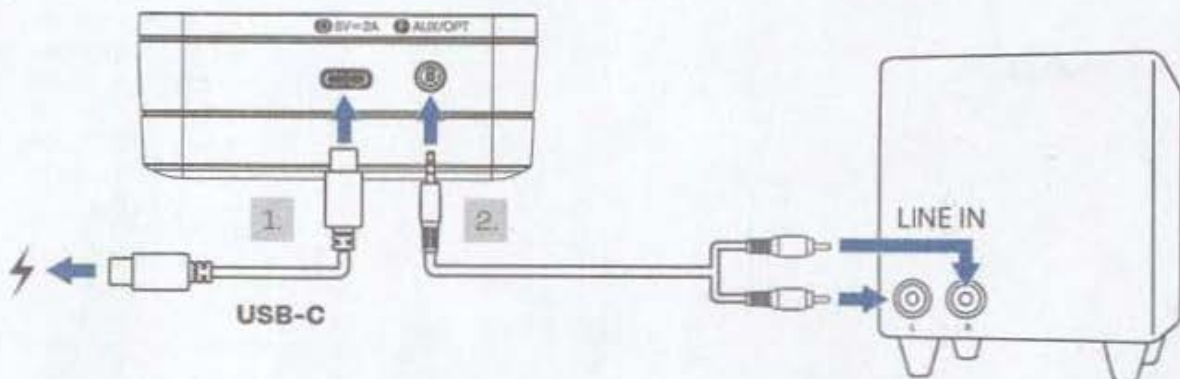


Connecting to non-KEF Subwoofers

Anschluss an Nicht-KEF-Subwoofer | Connexion aux caissons de basse autres que KEF |
Conexión a Subwoofers no KEF | 非KEFサブウーファーとの接続 | 连接非 KEF 超重低音扬声器 |
連線至非 KEF 超低音揚聲器 | 비 KEF 서브우퍼에 연결



OR



Setting Up

Einrichtung | Installation | Configuración | セッティング | 设置 | 設定 | 설정

Please scan the QR code for setup details.

Bitte scannen Sie den QR-Code für Details zur Einrichtung.

Veuillez scanner le code QR pour obtenir les détails de l'installation.

Escanee el código QR para más información sobre la configuración.

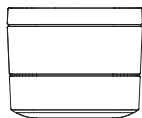
セッティングの詳細については、QRコードを読み取ってください。

請掃描二維碼了解設置詳情。

請掃描 QR 碼了解設定詳情。

설정에 대한 자세한 내용은 QR 코드를 스캔하세요.





User Manual

KW2 RX Receiver

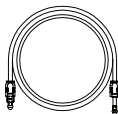
In the Box

Check whether KW2 or any parts are damaged or missed. If this is the case, do not use the product and contact your retailer.



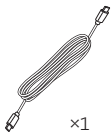
×1

KW2



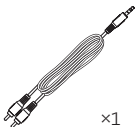
×1

Optical cable (1 m)



×1

USB-C power
cable (1 m)



×1

3.5 mm AUX to RCA
cable (1 m)



×1

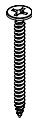
Printed materials



×2

M3.0 × 20 mm

Machine screws
(For KC62 / KF92 / Kube MIE / KC92)

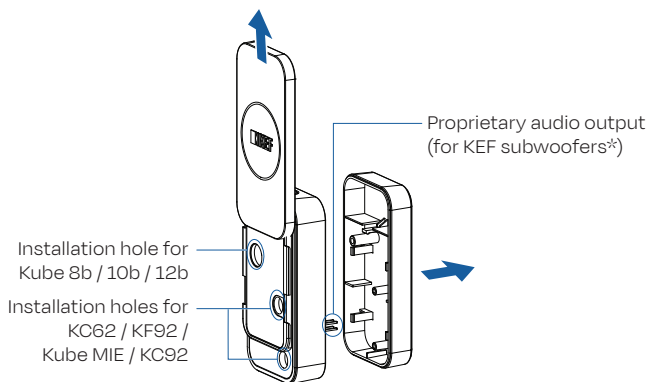
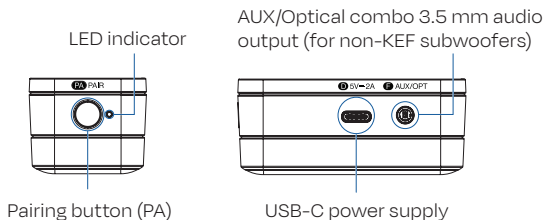
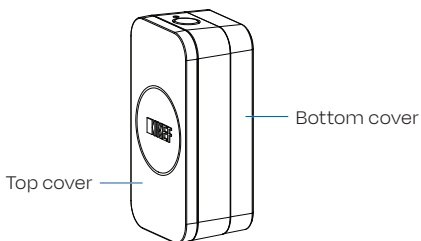


×1

M4.0 × 42 mm

Tapping screw
(For Kube 8b / 10b / 12b)

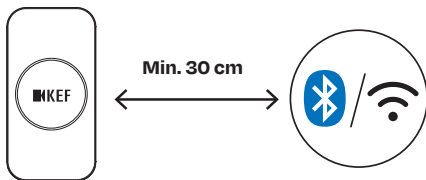
Product Overview



*KC62 / KF92 / Kube MIE / KC92 / Kube 8b / 10b / 12b

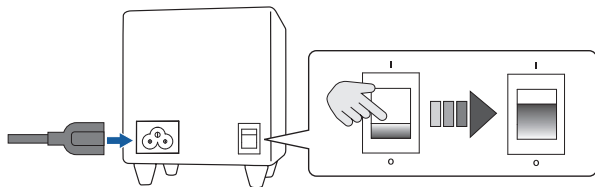
Placement

Ensure KW2 is placed at least 30 cm away from wireless transmitting equipment such as Wi-Fi routers, Bluetooth devices and wireless speakers to prevent potential signal interference.



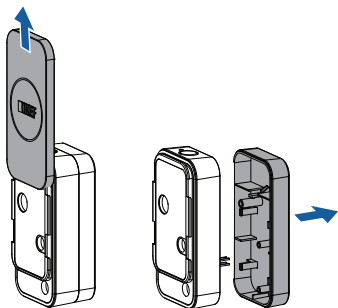
Getting Prepared

- Plug your subwoofer for power and turn it off by setting the power switch to the "O" (OFF) position.



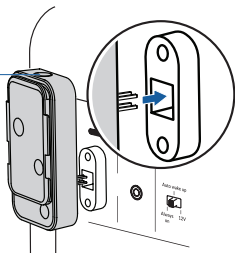
Connecting to KEF Subwoofers KC62 / KF92 / Kube MIE / KC92

1. Slide the top cover upwards to reveal the installation holes and then gently remove the bottom cover to expose the proprietary audio output.

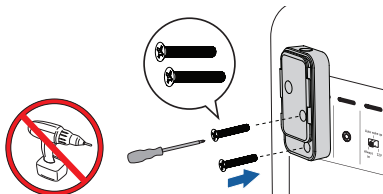


2. Plug the proprietary audio output into the subwoofer's expansion port (**E**).
- IMPORTANT: Make sure the pins of the output are correctly inserted and the pairing button (PA) faces **upwards**.

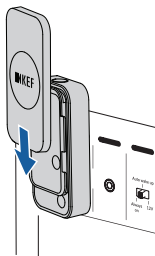
Note: Pairing button (PA) must be facing **upwards**



3. With a screwdriver, tighten the machine screws in the installation holes.
- **IMPORTANT:** Never use an electric screwdriver to avoid damage.

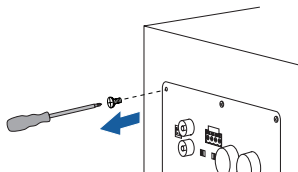


4. Slide the top cover back to its original position.

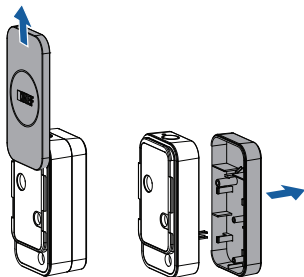


Connecting to KEF Subwoofers Kube 8b/10b/12b

1. With a screwdriver, remove the original screw from the subwoofer.

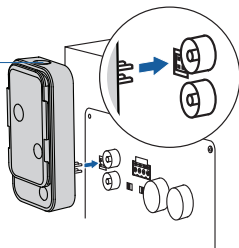


2. Slide the top cover upwards to reveal the installation hole and then gently remove the bottom cover to expose the proprietary audio output.

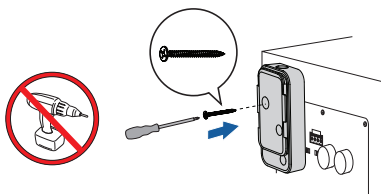


3. Plug the proprietary audio output into the subwoofer's expansion port (E).
- **IMPORTANT:** Make sure the pins of the output are correctly inserted and the pairing button (PA) faces **upwards**.

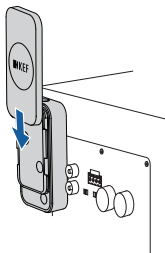
Note: Pairing button (PA) must be facing **upwards**



4. With a screwdriver, tighten the tapping screw in the installation hole.
- **IMPORTANT:** Never use an electric screwdriver to avoid damage.



5. Slide the top cover back to its original position.



KEF Subwoofer Settings

1. Enable the LFE mode on your subwoofer.

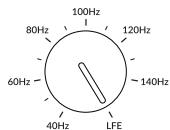
**KC62 / KF92 /
Kube 8b / 10b / 12b**

MANUAL

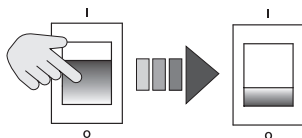


LFE

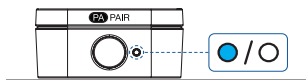
KC92 / Kube MIE



2. Set the subwoofer power switch to the "I" (ON) position.

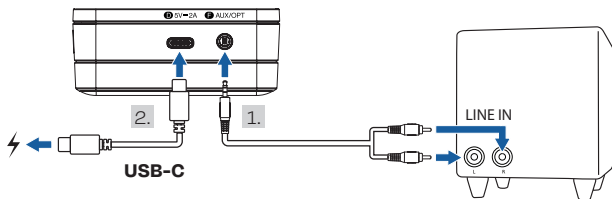


- The LED indicator of KW2 should blink cyan and white.

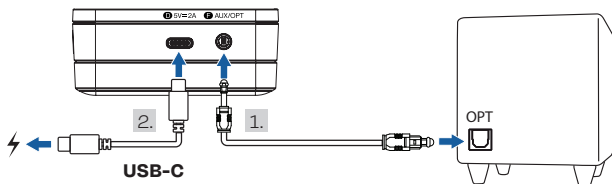


Connecting to non-KEF Subwoofers with Analogue Input

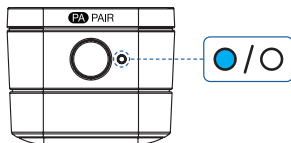
1. Connect KW2 and your subwoofer with a 3.5 mm to RCA audio cable or an optical cable.
2. Connect the USB-C power cable to the USB-C power supply.



OR



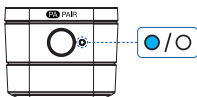
- The LED indicator of KW2 should blink cyan and white.



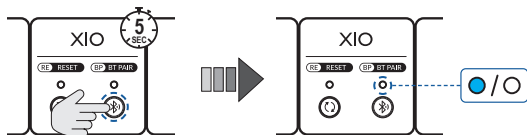
3. Power on your subwoofer.

Pairing with XIO

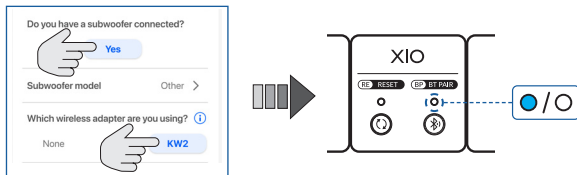
1. Ensure the subwoofer is powered on and the LED indicator of KW2 is blinking cyan and white.



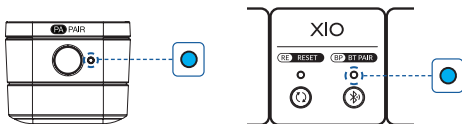
2. Ensure XIO is powered on and not in standby mode
3. On the back panel of the XIO, press and hold the "BT Pair" button (BP) for 5 seconds. The LED light above the "BT Pair" button will then blink cyan and white.



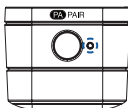
- Alternatively, you can also pair through the KEF Connect App. In the app, go to the EQ setting page, navigate to "Do you have a subwoofer connected?", select "Yes", then select "KW2". The LED light above the "BT Pair" button will then blink cyan and white.








4. When pairing is successful, the LED indicator of KW2 will become solid cyan. The LED light of XIO will become solid cyan for 3 seconds and then turn off.






Basic LED Indications



Product	LED indicator	Status
KW2	 Cyan/White	Searching for and connecting to XIO
KW2	 Cyan (Blinking slowly)	Searching for and connecting to a previously connected XIO
KW2	 Cyan (solid)	Connected to XIO
KW2	 Cyan/Amber	Initiating firmware update
KW2	 Cyan/Green/ Magenta/White	Firmware update is in progress (Do not turn off the subwoofer and XIO)

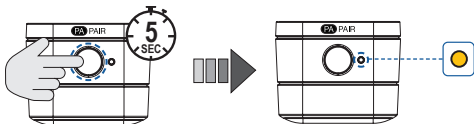


Product	LED indicator	Status
XIO	 Cyan/White	Broadcasting and allowing new KW2 to pair
XIO	 Cyan (Blinking slowly)	Broadcasting and connecting to a previously paired KW2
XIO	 Cyan (solid for 3 seconds)	KW2 is paired successfully

FAQ

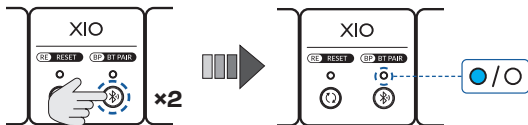
1. How to reset KW2?

- Press and hold the Pairing button (PA) on KW2 until the LED indicator blinks amber.

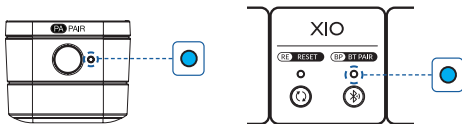


2. How to add additional KW2?

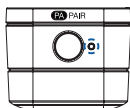
- Double press the "BT PAIR" button (BP) on the back panel of XIO. The LED light above the button will blink cyan and white.









- When pairing is successful, the LED indicator of KW2 will become solid cyan. The LED light of XIO will become solid cyan for 3 seconds and then turn off.









3. What do these LED indications mean?



XIO "BT Pair" LED light	KW2 LED indicator	Status	Solution
Off	 Cyan/ White	KW2 is searching for new wireless transmitter.	<p>Ensure XIO is powered on and not in standby mode. If wireless transmitter is switched off:</p> <ul style="list-style-type: none"> Press and hold the "BT Pair" button for 5 seconds on XIO. The LED light above the button on XIO will then blink cyan and white. <p>If wireless transmitter is switched on:</p> <ul style="list-style-type: none"> Double press the "BT Pair" button on XIO. The LED light above the button on XIO will then blink cyan and white.
 Cyan/ White	 Cyan (blinking slowly)	KW2 is searching for the previously paired wireless transmitter.	Press and hold the pairing button (PA) on KW2 until the LED indicator blinks amber to reset KW2.

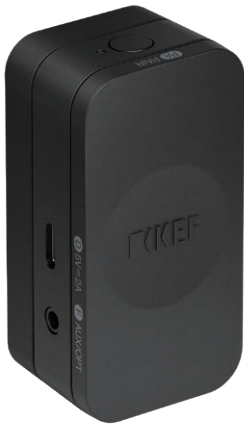
XIO "BT Pair" LED light	KW2 LED indicator	Status	Solution
 Cyan/ White	 Red (blinking quickly)	The KW2 has an error and the wireless transmitter is searching for it.	<p>If using KEF subwoofer:</p> <ol style="list-style-type: none"> 1. Turn OFF all Bluetooth devices nearby. 2. Set the subwoofer power switch to OFF, then turn ON again. <p>If using non-KEF subwoofer:</p> <ol style="list-style-type: none"> 1. Turn OFF all Bluetooth devices nearby. 2. Unplug and then plug again the USB-C power cable.
 Cyan/ White	Off	The wireless transmitter is searching for KW2. But KW2 does not have power.	Ensure KW2 is connected to power.

XIO "BT Pair" LED light	KW2 LED indicator	Status	Solution
 Cyan (blinking slowly)	 Cyan/ White	The wireless transmitter is trying to connect to the previously paired KW2.	Double press the "BT Pair" button on XIO. <ul style="list-style-type: none"> • The LED light above the button on XIO will blink cyan and white. • After successful pairing, the LED indicator of KW2 will become solid cyan. The LED light above the button on XIO will become solid cyan for 3 seconds and then turn off.
 Cyan (solid for 3 seconds)	 Cyan/ White	The wireless transmitter is connected to another KW2.	Double press the "BT Pair" button on XIO. <ul style="list-style-type: none"> • The LED light above the button on XIO will blink cyan and white. • After successful pairing, the LED indicator of KW2 will become solid cyan. The LED light above the button on XIO will become solid cyan for 3 seconds and then turn off.

XIO "BT Pair" LED light	KW2 LED indicator	Status	Solution
 Red (blinking quickly)	 Cyan/ White	The wireless transmitter has an error and KW2 is searching for it.	<ol style="list-style-type: none"> 1. Turn OFF all Bluetooth devices nearby. 2. Set the power switch of XIO to OFF then ON again (not in standby mode).

For more support, please visit [kef.com](https://www.kef.com)

KW2 RX Receiver



KW2 RX Receiver is a wireless adapter designed to connect subwoofers to the XIO soundbar without the need for wires. This versatile device links XIO to KEF's wide range of subwoofers, including KC62, KC92, KF92 and KUBE, allowing for optimal placement to enhance your home entertainment experience. With high-quality wireless transmission, it captures every detail of your favourite films and music. Additionally, KW2 RX Receiver connects to third-party subwoofers via a 3.5mm Aux/optical combo output, providing you with the flexibility to create a customised audio setup tailored to your preferences.

Seamless and flexible

The compact KW2 RX Receiver is designed for functionality while maintaining a discreet profile. It is powered directly by the KEF subwoofer expansion port, eliminating the need for an additional power socket.

KW2 RX Receiver operates in a reliable wireless frequency range, delivering high-resolution audio up to 24bit/48kHz. Pairing the device is intuitive, and its range of up to 15 metres (line of sight) allows for flexible subwoofer placement. With additional receivers, you can connect multiple subwoofers to amplify the bass experience.

Specifications

Model	KW2 RX Receiver
Dimensions (HWD)	72 x 37 x 31 mm (2.8 x 1.5 x 1.2 in.)
Weight	50 g (0.1 lbs)
Radio frequency	2.4 GHz
Radio frequency range	2400 MHz – 2483.5 MHz
Maximum radio frequency Power (EIRP)	<10 dBm
Frequency response	20 Hz – 20 kHz
Resolution	24bit/48KHz
Signal-to-noise-ratio	>80 dB
Maximum line of sight distance	15m from XIO
Latency	57 ms
Total harmonic distortion	<0.2 %
Input	USB Type-C (5V 2A)
Outputs	Proprietary analogue 3.5 mm analogue TOSLINK Optical

Summary of features

- Designed for XIO soundbar
- Works with KEF subwoofers wirelessly and third-party subwoofers via 3.5mm Aux/optical combo output
- Supports high-resolution audio up to 24bit/48kHz
- Operates up to 15 metres (line of sight) for optimal subwoofer placement
- Ability to connect to multiple subwoofers with additional receivers



KEF

IMPORTANT SAFETY
INFORMATION

 KEF

Thank you for choosing KEF. KEF is dedicated to producing premium audio products with best-in-class sound quality to give you an engrossing and pleasurable listening experience that is true to the original performance.

Please read the important safety and warranty information below. For any other services, please contact your local authorised KEF distributor, whose details can be found at www.kef.com

IMPORTANT SAFETY INFORMATION

- Follow this manual carefully for the best results from your speakers
- Read and return the warranty card
- Clean with a dry lint free cloth
- Do not use spirit based cleaners
- Avoid damp
- Avoid temperature extremes
- Avoid direct sunlight
- SAFETY NOTICE! Trailing cables are dangerous, secure all cables

WARNING

TO REDUCE THE RISK OF FIRE OR ELECTRICAL SHOCK, DO NOT EXPOSE THIS APPLIANCE TO RAIN OR MOISTURE



CAUTION

RISK OF ELECTRIC SHOCK
DO NOT OPEN



CAUTION: TO REDUCE THE RISK OF ELECTRIC SHOCK, DO NOT REMOVE COVER (OR BACK).
NO USER-SERVICEABLE PARTS INSIDE.
REFER SERVICING TO QUALIFIED SERVICE PERSONNEL.

- A combined mains power input lead and country-specific mains plug is provided.
- Check before connecting to your local mains supply that the local supply voltage is the same as that marked on the rear panel. If it is not, check with your supplier before proceeding.

CAUTION

Danger of explosion if battery is incorrectly replaced. Replace only with the same or equivalent type

WARNING

Do not ingest the battery, Chemical Burn Hazard

(The remote control supplied with) This product contains a coin/button cell battery. If the coin/button cell battery is swallowed, it can cause a severe internal burns in just 2 hours and can lead to death.

Keep new and used batteries away from children.

If the battery compartment does not close securely, stop using the product and keep it away from children.

If you think batteries might have been swallowed or placed inside any part of the body, seek immediate medical attention.

- Battery shall not be exposed to excessive heat such as sunshine, fire or the like.
- The appliance should be connected to a mains socket with a protective earthing connection.
- Refer to the information on the underside of the enclosure for electrical and safety information before installing or operating the appliance.

Explanation of Graphical Symbols



The lightning flash with arrowhead symbol, within an equilateral triangle, is intended to alert the user to the presence of uninsulated "dangerous voltage" within the products enclosure that may be of a sufficient magnitude to constitute a risk of electrical shock to persons.



The exclamation mark within an equilateral triangle is intended to alert the user to the presence of important operating and maintenance (servicing) instructions in the literature accompanying the appliance.



Correct Disposal of This Product. This marking indicates that this product should not be disposed with other household wastes throughout the EU. To prevent possible harm to the environment or human health from uncontrolled waste disposal, recycle it responsibly to promote the sustainable reuse of material resources.

To return your used device, please use the return and collection systems or contact the retailer where the product was purchased. They can take this product for environmentally safe recycling.

The normal function of the product may be disturbed by Strong Electro Magnetic Interference. If so, simply reset the product to resume normal operation by following the instruction manual. In case the function could not resume, please use the product in other location.

FCC Statement

This device complies with Part 15 of the FCC Rules. Operation is subject to the following two conditions: (1) this device may not cause harmful interference, and (2) this device must accept any interference received, including interference that may cause undesired operation.

Caution: The user is cautioned that changes or modifications not expressly approved by the party responsible for compliance could void the user's authority to operate the equipment.

Note: This equipment has been tested and found to comply with the limits for a Class B digital device, pursuant to part 15 of the FCC Rules. These limits are designed to provide reasonable protection against harmful interference in a residential installation. This equipment generates uses and can radiate radio frequency energy and, if not installed and used in accordance with the instructions, may cause harmful interference to radio communications. However, there is no guarantee that interference will not occur in a particular installation. If this equipment does cause harmful interference to radio or television reception, which can be determined by turning the equipment off and on, the user is encouraged to try to correct the interference by one or more of the following measures:

- Reorient or relocate the receiving antenna.
- Increase the separation between the equipment and receiver.
- Connect the equipment into an outlet on a circuit different from that to which the receiver is connected.
- Consult the dealer or an experienced radio/TV technician for help.

FCC RF Radiation Exposure Statement

This equipment complies with FCC radiation exposure limits set forth for an uncontrolled environment. This equipment should be installed and operated with a minimum distance of 20cm between the radiator and any part of your body.

ISED Statement

This device contains licence-exempt transmitter(s)/receiver(s) that comply with Innovation, Science and Economic Development Canada's licence-exempt RSS(s). Operation is subject to the following two conditions:

1. This device may not cause interference.

2. This device must accept any interference, including interference that may cause undesired operation of the device.

Radiation Exposure Statement

This equipment complies with IC RSS-102 radiation exposure limits set forth for an uncontrolled environment. This equipment should be installed and operated with minimum distance 20 cm between the radiator & your body.

Important Safety Instructions

1. Read these instructions.
2. Keep these instructions – for future reference.
3. Heed all warnings – on the product and in all product documentation.
4. Follow all instructions.
5. Do not use this apparatus near water.
6. The apparatus shall not be exposed to dripping or splashing and that no objects filled with liquids, such as vases, shall be placed on the apparatus.
7. Clean only with a dry cloth.
8. Do not block any ventilation openings. Install in accordance with the manufacturer's instructions. To ensure reliable operation of the product and to protect it from overheating put the product in a position and location that will not interfere with its proper ventilation.
9. Do not install near any heat sources, such as radiators, heat registers, stoves, or other apparatus (including amplifiers) that produce heat.
10. No naked flame sources, such as lighted candles, should be placed on the apparatus.
11. Do not defeat the safety purpose of the polarized or grounding-type plug. A polarized plug has two blades with one wider than the other. A grounding-type plug has two blades and a third grounding prong. The wider blade or third prong is provided for your safety. If the provided plug does not fit in your outlet, consult an electrician for replacement of the obsolete outlet.
12. Protect the power cord from being walked on or pinched, particularly at plugs, convenience receptacles, and the point where they exit from the apparatus.
13. The main plugs or the appliance coupler shall be readily accessible to completely disconnect the apparatus from power.
14. Only use attachments/accessories specified by the manufacturer.
15. Use only with the cart, stand, tripod, bracket, or table specified by the manufacturer or sold with the apparatus. When a cart is used, use caution when moving the cart/apparatus combination to avoid injury from tip-over.
16. Unplug this apparatus during lightning storms or when unused for long periods of time to prevent damage to this product.
17. Refer all servicing to qualified service personnel. Servicing is required when the apparatus has been damaged in any way such as power-supply cord or plug is damaged; liquid has been spilled or objects have fallen into the apparatus; the apparatus has been exposed to rain or moisture, does not operate normally, or has been dropped. Do not attempt to service this product yourself. Opening or removing covers may expose you to dangerous voltages or other hazards. Please call KEF to be referred to an authorized service center near you.



FCC Supplier's Declaration of Conformity

Product name: Wireless Adapter for XIO

Model number: KW2 RX Receiver

This device complies with part 15 of the FCC Rules. Operation is subject to the following two conditions: (1) This device may not cause harmful interference, and (2) this device must accept any interference received, including interference that may cause undesired operation.

Responsible Party – U.S. Contact Information

Company name: GP Acoustics (US), Inc.

Address: 10 Timber Lane, Marlboro, New Jersey US-07746, United States

Telephone number: +1 732 683 23 56

Hereby, KEF declares that the radio equipment type KW2 RX Receiver is in compliance with Directive 2014/53/EU. The full text of the EU declaration of conformity is available at the following internet address: kef.com

Hereby, KEF declares that this KW2 RX Receiver is in compliance with the essential requirements and other relevant provisions of Radio Equipment Regulations 2017. The full text of the UK declaration of conformity is available at the following internet address: kef.com

限用物質含有情況說明書
Presence Condition of the Restricted Substances Marking

設備名稱: XIO無線遙控器 Equipment name		型號(型式): KW2 RX Receiver Type designation (Type)				
單元 Unit	限用物質及其化學符號 Restricted substances and its chemical symbols					
	鉛 Lead (Pb)	汞 Mercury (Hg)	鎘 Cadmium (Cd)	六價鉻 Hexavalent chromium (Cr ⁶⁺)	多溴聯苯 Polybrominated biphenyls (PBB)	多溴二苯醚 Polybrominated diphenyl ethers (PBDE)
箱體	○	○	○	○	○	○
喇叭單元	○	○	○	○	○	○
電子部件	—	○	—	○	○	○
接線端子	—	○	○	○	○	○
電線	—	○	○	○	○	○
附件	○	○	○	○	○	○

備考1: "超出0.1 wt %" 及 "超出0.01 wt %" 係指限用物質之百分比含量超出百分比含量基準值。
Note 1: "Exceeding 0.1 wt %" and "exceeding 0.01 wt %" indicate that the percentage content of the restricted substance exceeds the reference percentage value of presence condition.

備考2: "○" 係指該項限用物質之百分比含量未超出百分比含量基準值。
Note 2: "○" indicates that the percentage content of the restricted substance does not exceed the percentage of reference value of presence.

備考3: "—" 係指該項限用物質為排除項目。
Note 3: The "—" indicates that the restricted substance corresponds to the exemption.

報驗義務人: 蕭好華

名稱: 富士洲股份有限公司

地址: 臺北市信義區吳興街284巷22弄112號4樓



Specifications



Model	KW2 RX Receiver
Dimensions (HWD)	72 x 37 x 31 mm (2.8 x 1.5 x 1.2 in.)
Weight	50 g (0.1 lbs)
Radio frequency	2.4 GHz
Radio frequency range	2400 MHz – 2483.5 MHz
Maximum radio frequency Power (EIRP)	<10 dBm
Frequency response	20 Hz – 20 kHz
Resolution	24bit/48KHz
Signal-to-noise-ratio	>80 dB
Maximum line of sight distance	15m from XIO
Latency	57 ms
Total harmonic distortion	<0.2 %
Input	USB Type-C (5V 2A)
Outputs	Proprietary analogue 3.5 mm analogue TOSLINK Optical

KEF reserves the right, in line with continuing research and development, to amend or change specifications. E&OE.

合格证
已检验

检验员:



出厂日期:

A S 2 6

Complies with
IMDA Standards
DA101682

GP Acoustics (UK) Limited
Eccleston Road,
Tovil, Maidstone
Kent, ME15 6QP
UK



P/N: 4301-7660+0

KEF.com

Warranty Information



Limited Warranty

Thank you for choosing KEF. KEF is dedicated to producing premium audio products with best-in-class sound quality to give you an engrossing and pleasurable listening experience that is true to the original performance.

For KEF latest news and product information please visit www.kef.com

KEF products purchased from an authorised KEF retailer are covered by a warranty. GP Acoustics (UK) Limited and KEF's authorised distributors provide warranty with a valid proof of purchase.

This warranty is in addition to, and in no way detracts from, your statutory rights as a consumer under any applicable laws governing this warranty.

Garantiebestimmungen

Vielen Dank, dass Sie ein Produkt von KEF erworben haben. KEF produziert Premium-Audio-Produkte mit klassenbesten Klangqualität, um Ihnen ein nahe am Original befindliches, fesselndes Hörvergnügen zu ermöglichen.

Für aktuelle Produkt-Informationen besuchen Sie bitte die KEF-Webseite: www.kef.com.

Alle KEF-Produkte, die bei einem autorisierten Fachhändler erworben wurden, sind durch eine Garantie geschützt. GP Acoustics (UK) und KEF's autorisierte Distributoren gewährleisten diese Garantie gegen Vorlage des Kaufbelegs.

Diese Garantie gilt zusätzlich zu den unveränderlichen und gesetzlichen Gewährleistungsrechten, die Ihnen als Konsument zustehen.

Garantie Limitée

Merci d'avoir choisi KEF. KEF se consacre à concevoir et fabriquer des produits audio premium offrant un son de premier ordre pour un plaisir d'écoute total, en respectant la performance originale.

Pour découvrir l'actualité de KEF: www.kef.com

Les produits KEF achetés chez un revendeur agréé KEF sont couverts par une garantie. Les distributeurs agréés GP Acoustics (UK) Limited et KEF donnent droit à cette garantie sous réserve d'une preuve d'achat conforme.

Cette garantie vient en addition et non en substitution des droits statutaires du consommateur applicables dans le pays où s'exerce la garantie.

For full details please visit: www.kef.com/support or contact our Customer Service Department at

+44 800 652 2696 (UK) (charges may apply from calls made outside of the UK), by email at support@kef.com or by post at GP Acoustics (UK) Limited, Eccleston Road, Tovil, Maidstone, Kent, ME15 6QP, UK for a full copy of the warranty.

GP Acoustics (UK) Limited
Eccleston Road
Tovil, Maidstone
Kent, ME15 6QP
UK
+44 1622 672 261

Für Detailinformationen besuchen Sie bitte folgende Webseite: www.kef.com/support. Alternativ können Sie unsere Service Abteilung unter der folgenden Telefonnummer erreichen: +44 800 652 2696 (UK). Für diese Nummer fallen übliche Auslands-Telefongebühren an. Sie können auch eine Email an folgende Adresse senden support@kef.com, oder uns per Briefpost unter GP Acoustics (UK) Limited, Eccleston Road, Tovil, Maidstone, Kent, ME15 6QP, UK kontaktieren, um Garantieinformationen anzufordern.

GP Acoustics (UK) Limited
Eccleston Road
Tovil, Maidstone
Kent, ME15 6QP
UK
+44 1622 672 261

Pour plus de détails: www.kef.com/support ou contacter notre service clientèle au numéro gratuit

+44 800 652 2696 (UK) - frais d'appel hors Royaume Uni pouvant être applicables -, par email à support@kef.com ou par courrier à GP Acoustics (UK) Limited, Eccleston Road, Tovil, Maidstone, Kent, ME15 6QP, UK pour obtenir une copie complète de la garantie.

GP Acoustics (UK) Limited
Eccleston Road
Tovil, Maidstone
Kent, ME15 6QP
UK
+44 1622 672 261

Garantía Limitada

Gracias por elegir KEF. KEF se dedica a la fabricación de productos audio de primera calidad y con la mejor calidad de sonido de su categoría, para brindarle una inmersa y placentera experiencia auditiva que sea fiel a la pieza original.

Para las últimas novedades e información sobre productos KEF, por favor visite: www.kef.com

Los productos KEF que compre de un vendedor autorizado están cubiertos por una garantía. GP Acoustics (UK) Limited y los distribuidores autorizados de KEF reconocerán dicha garantía al presentar una prueba válida de la compra.

Se le concede esta garantía adicionalmente y sin restarle valor a sus derechos reglamentarios como consumidor, de conformidad con toda la legislación aplicable de la que

期限付き保規定

KEF の製品をお選びいただき、ありがとうございます。KEF は、オリジナルの演奏に忠実であなたを夢中にさせる楽しい試聴体験をご提供するため、クラス最高の音質のプレミアムなオーディオ製品を生産しつづけています。

KEFのニュースと最新情報は、www.kef.comまで。

KEF正規認定店で求めいただいたKEF製品には、保証規定が適用されます。GPアコースティクス(UK)および世界各国の正規輸入代理店が購入の有効な証明と保証を提供いたします。

この保証規定は、関連する一切の適用法令の下で消費者として保有する法的権利へ付加するものではありません。

有限保固

多谢您选购 KEF 之产品。KEF 致力于提供音质查流的高级音频产品，忠实还原原音，为您带来愉悦迷人的聆听体验。

欲了解 KEF 最新动态及产品信息请访问 KEF 官方网站 www.kef.com。

从 KEF 授权经销商处购买的 KEF 产品均可享受保修服务。GP Acoustics (UK) Limited 或 KEF 授权总代理商为具备有效购买凭证的 KEF 产品提供质保。

本保修条款不影响您作为消费者在适用法律范围内行使任何其它法定权利。

se rige la presente garantía. Para los detalles completos, por favor visite: www.kef.com/support, o comuníquese con nuestro Departamento de atención al cliente llamando: +44 800 652 2696 (UK), pueden aplicarse recargos por llamadas del extranjero al Reino Unido, por correo electrónico a: support@kef.com, o por correo a la dirección postal: GP Acoustics (UK) Limited, Eccleston Road, Tovil, Maidstone, Kent, ME15 6QP, UK, para solicitar una copia completa de la garantía.

GP Acoustics (UK) Limited
Eccleston Road
Tovil, Maidstone
Kent, ME15 6QP
UK
+44 1622 672 261

詳細は以下をご覧ください: www.kef.com/support また、完全な保証のためにはKEFカスタマーセンターへお問い合わせください。お電話の場合はフリーダイヤル +44 800 652 2696 (UK)、E-mailの場合は support@kef.com、郵送の場合は GP Acoustics (UK) Limited, Eccleston Road, Tovil, Maidstone, Kent, ME15 6QP, UKまで。

GP Acoustics (UK) Limited
Eccleston Road
Tovil, Maidstone
Kent, ME15 6QP
UK
+44 1622 672 261

详情请访问: www.kef.com/support。您亦可通过以下方式进一步了解保修条款和条件:

拨打 +44 800 652 2696 (UK) 与 KEF 客户服务部门联系 (英国以外的地区将产生通话费用), 发邮件至 support@kef.com, 或邮寄信件至 GP Acoustics (UK) Limited, Eccleston Road, Tovil, Maidstone, Kent, ME15 6QP, UK。

GP Acoustics (UK) Limited
Eccleston Road
Tovil, Maidstone
Kent, ME15 6QP
UK
+44 1622 672 261

有限保固

感謝您選用 KEF 的產品。KEF 致力於生產高階的音響產品並提供最頂尖的音質，忠於原聲的聆聽享受將帶給您愉快而引人入勝的體驗。

更多 KEF 最新資訊請至: www.kef.com

於 KEF 授權的指定合約通路購買 KEF 的產品享有原廠的保固服務。GP Acoustics (UK) Limited 與 KEF 授權經銷商提供有購買證明的保固服務。

本保固卡並不會損害您作為一個消費者於該國法律所保障之權益。

更多資訊請至: www.kef.com/support。您也可以致電

我們位於英國的客服部門專線: +44 800 652 2696 (若您在英國以外的地區撥打，電信業者可能會收取越洋電話的通話費用)，您也可以寫電子郵件至

support@kef.com 詢問相關內容，郵寄保證書影本請寄至 GP Acoustics (UK) Limited, Eccleston Road, Tovil, Maidstone, Kent, ME15 6QP, UK。

GP Acoustics (UK) Limited
Eccleston Road
Tovil, Maidstone
Kent, ME15 6QP
UK
+44 1622 672 261

제한적보증

KEF를 선택해 주셔서 대단히 감사합니다. KEF는 사용자들에게 최고 의 음질을 느끼고 경험할 수 있도록 최고의 고급 오디오 제품을 생산하기 위해 최선을 다하고 있습니다.

KEF에 대한 최신 뉴스 및 제품 정보는 www.kef.com 에서 확인하실 수 있습니다.

KEF 공식 판매점에서 구입한 KEF 제품에 대해서만 보증이 적용됩니다. GP Acoustics (UK) Limited 와 KEF의 공식 총판에서는

유효한 구매 증거가 있을 시에만 보증을 제공합니다.

KEF는 소비자 보호 규정을 준수합니다. 보증에 대한 더 자세한 사항은 www.kef.com/support 에서 확인하실 수

있습니다. 문의 사항이 있을 경우, 고객센터 [+44 800 652 2696 (UK) *UK외 지역에서는 요금 부과될 수 있음] 또는 이메일 [support@kef.com] 로 문의하시거나 보증서 복사본 전체를 우편으로 해당 주소

[GP Acoustics (UK) Limited, Eccleston Road, Tovil, Maidstone, Kent, ME15 6QP, UK] 로 보내신 후 문의하실 수도 있습니다.

GP Acoustics (UK) Limited
Eccleston Road
Tovil, Maidstone
Kent, ME15 6QP
UK
+44 1622 672 261

This product's packaging materials are recyclable to a certain extent. Please dispose of any materials in accordance with the local recycling regulations. When discarding the unit, comply with local rules or regulations.

Batteries (for applicable products) should never be thrown away or incinerated but disposed of in accordance with the local regulations concerning battery disposal.

The designated on-site facility is intended to ensure that all materials can be collected and recycled in an environmentally friendly and effective manner and that they can be recycled as best as possible, leaving as little unusable waste as possible.

Die Verpackungsmaterialien dieses Produkts sind bis zu einem gewissen Grad recycelbar. Bitte entsorgen Sie alle Materialien gemäß den örtlichen Recyclingvorschriften. Halten Sie sich bei der Entsorgung des Geräts an die örtlichen Vorschriften und Bestimmungen.

Batterien (für zutreffende Produkte) dürfen nicht weggeworfen oder verbrannt werden, sondern müssen gemäß den örtlichen Vorschriften für die Entsorgung von Batterien entsorgt werden.

Die vorgesehene Rückgabemöglichkeit vor Ort soll sicherstellen, dass alle Materialien umweltverträglich und effektiv gesammelt und recycelt und bestmöglich der Wiederverwertung zugeführt werden können und damit möglichst wenig unverwertbarer Abfall übrigbleibt.

GP Acoustics (UK) Limited
Eccleston Road,
Tovil, Maidstone
Kent, ME15 6QP
UK



P/N: 3050-7071+0

KEF.com

KW2 RX Receiver - Environmental labelling of packaging

	Paper Collection	
	PAP 20 / PAP 21	PAP 21
EN	Carton and Accessory boxes	Printing materials
DE	Karton und Zubehörboxen	Druckmaterialien
FR	Carton et boîtes d'accessoires	Matériaux d'impression
NL	Kartonnen dozen en accessoiredozen	Afdrukken materialen
IT	Scatole di cartone e accessori	Materiali di stampa
ES	Cajas de cartón y accesorios	Materiales de impresión
JP	カートンとアクセサリボックス	印刷物
KO	판지 및 액세서리 상자	인쇄 재료
RU	Картонные коробки и коробки для аксессуаров	Материалы для печати
SC	紙箱和配件盒	印刷材料
TC	紙箱和配件盒	印刷材料

	Plastic Collection
	CPE 07
EN	Plastic bags
DE	Plastiktüten
FR	Sacs en plastique
NL	Plastic zakken
IT	Buste di plastica
ES	Bolsas de plástico
JP	ビニール袋
KO	비닐 봉투
RU	Пластиковые пакеты
SC	塑料袋
TC	塑料袋

Since 1961 KEF's mission has been to preserve the integrity of sound with as little intervention as possible; from treble to bass, and everything in between.

Experience is everything, and that's no overstatement. Combining our obsessions with acoustic authenticity and innovative engineering, we'd like to think that our products speak for themselves.

Listen and believe

