

How to Recalibrate Your Camera with QooCam Studio

I . Install QooCam Studio

Download the latest version of QooCam Studio on Kandao website:

<https://www.kandaovr.com/support/detail/?id=z9pN8jpJben7>



II . Start Recalibration

Method 1: Calibrate Using a Photo

1. Take a photo

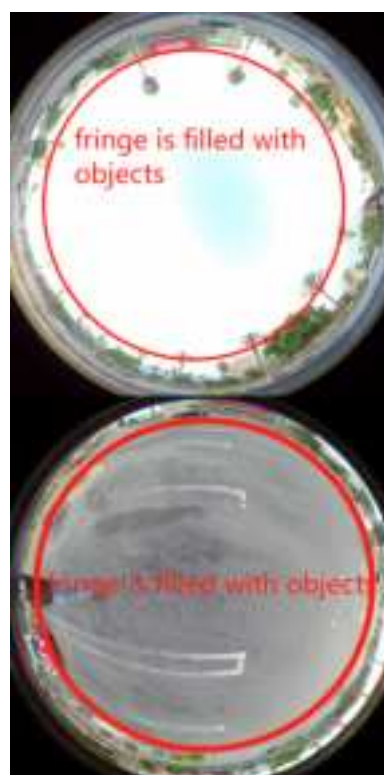
Shooting Requirements:

- **Scene Requirements:**
 - **Camera Adjustments:** Before shooting, please remove the lens Protector and disable the camera's Settings 「Stitching - Auto Stitch Photo」 .
 - **Foreground:** Ensure no obstructions in front of the lens.
 - **Environment:** Choose an open area with ample daylight.
 - **Background:** Distant view should include buildings with varied colors, avoiding uniform color blocks.

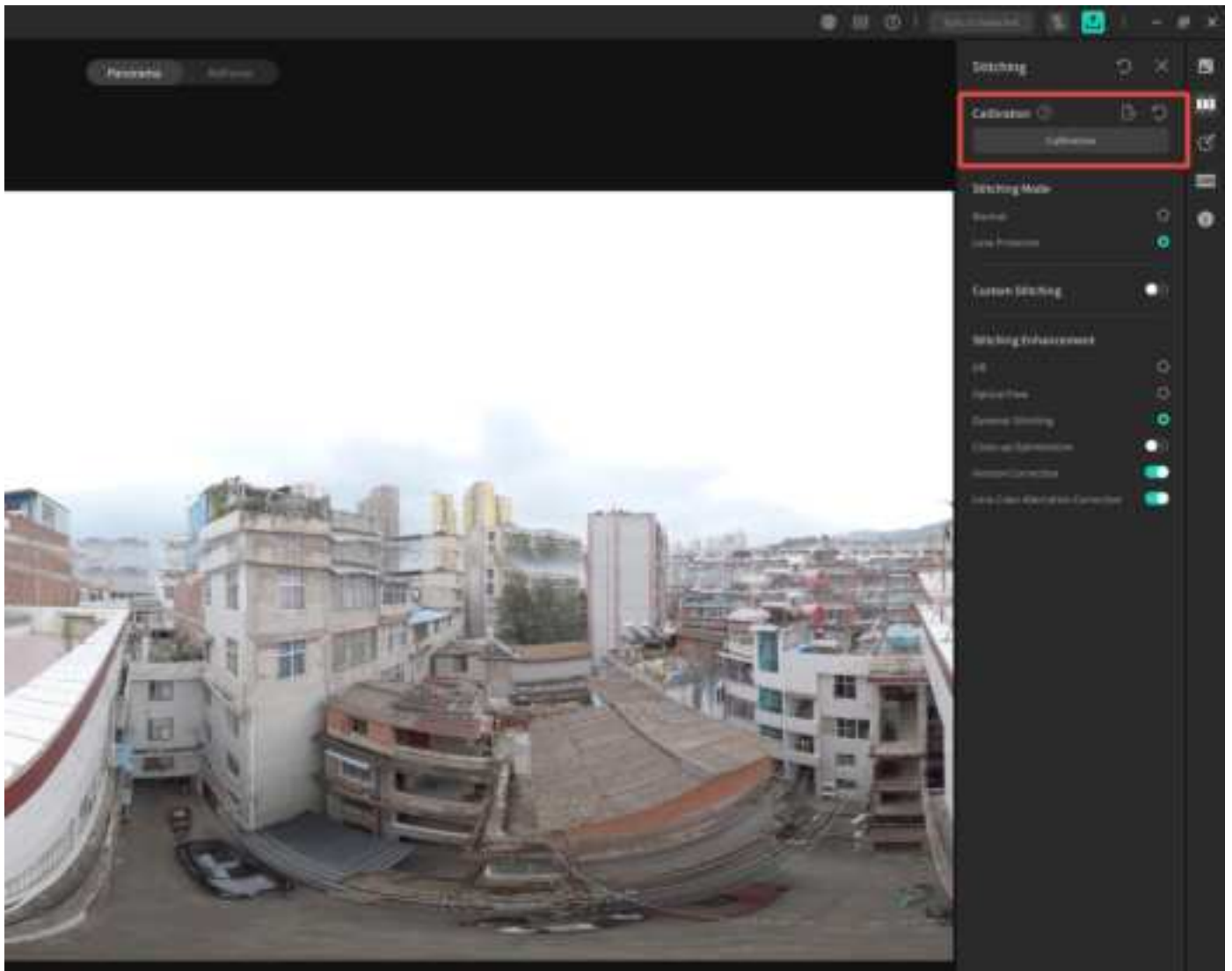
Note: Ensure no moving objects within a 5-meter radius of the camera.



- Example image:



2. Import the photo into QooCam Studio, click on the “Calibration” option.



Method 2: Calibrate Using a Video Frame

1. Drop a video file shot with QooCam 3 in the QooCam Studio.
2. Turn off the “Optical Flow” toggle.
3. Select a frame in the video.

*Note: make sure that on the stitching line, there are no objects nearby while there are buildings with rich textures in the distance (in different color blocks).

4. Click on the “Calibration” option.



Before Calibration

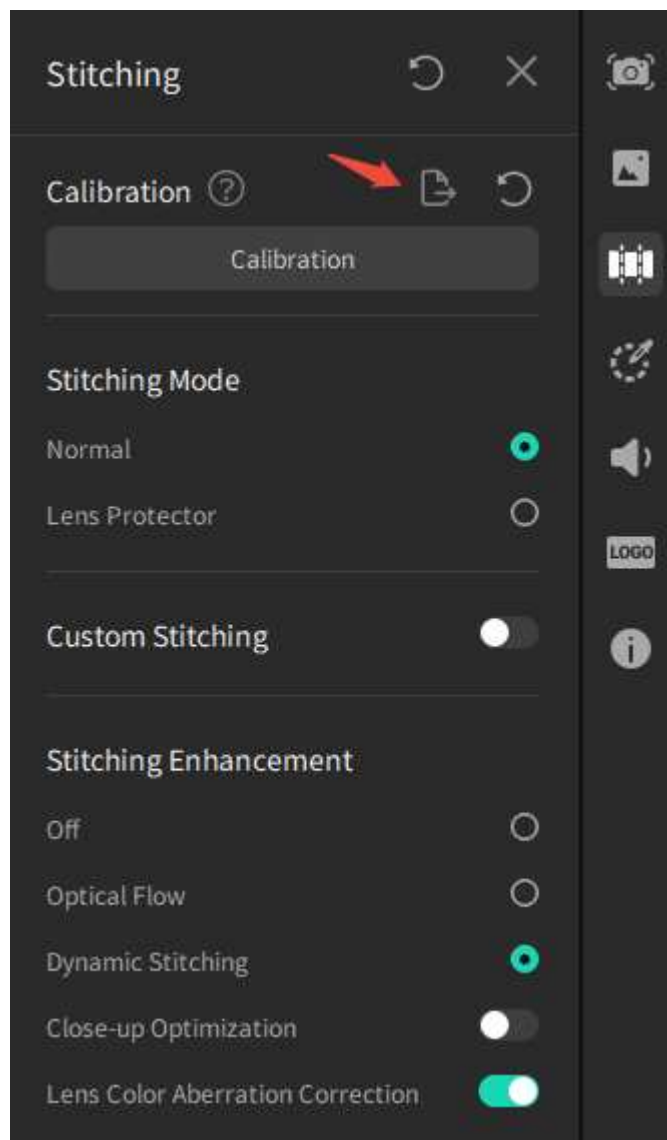


After Calibration

III. Update Calibration Parameters to Camera

To synchronize new calibration parameters to your camera, follow these steps:

1. Export the optimized calibration file "refined.txt" after calibration.



2. Save the file "refined.txt" to the root directory of the SD card.
3. Insert the SD card into the powered-off camera.
4. Power on the camera, the new parameters will be automatically synchronized to the camera.