

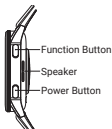
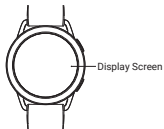


# Xiaomi Watch S3 User Manual

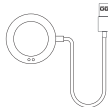
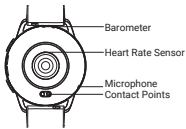


## Product Overview

Read this manual carefully before using this product, and retain it for future reference.



Watch



Charging Dock

Download and install the app to better manage your watch, and log in to your Xiaomi account for more services.



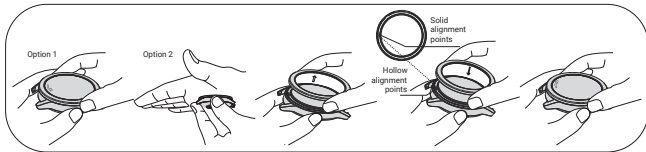
Scan the QR code to download the App.



For more details, please scan the QR code or connect the watch to the app and check it in the user guide.

## Instructions for disassembling and assembling bezel

1. Press the edge of the bezel with your index finger and thumb, or press the bezel with your palm, and then turn it counterclockwise (about 20 degrees) with a gentle force to loosen it.
2. Pinch up and remove the bezel.
3. Match the alignment point inside the replacement bezel with the alignment point of the watch (at 12 o'clock position). Place the bezel horizontally and fasten it to the watch body.
4. To install the bezel, press the edge of the bezel with your index finger and thumb, or press the bezel with your palm and turn it clockwise with a gentle force until a "click" is felt when it is installed in place.



## Specifications

Name: Smart Watch

Water Resistance: 5ATM

Battery Capacity: 486 mAh

Operating Temperature: -10°C to 45°C

Wireless Connectivity: **Bluetooth®**

5.2 Input Voltage: 5 V 

Input Current: 2 A

 The symbol indicates DC voltage

Model: M2323W1

GPS-L1/Galileo-E1/GLONASS-G1/BDS-B1I B1C/QZSS-L1

Operation Frequency: 1559–1610 MHz

GPS-L5/Galileo-E5a/BDS-B2A/QZSS-L5

Operation Frequency: 1164–1215 MHz

Bluetooth Operation Frequency: 2400–2483.5 MHz

Bluetooth Maximum Output(ERIP): < 14 dBm

Maximum Output Power: -20.1dBuA/m@10m

NFC Operation Frequency: 13.56 MHz

Compatible with: This product only supports certain Android or iOS systems. For detailed information, please check the product page on [www.mi.com](http://www.mi.com).

For regulatory information, product certification, and compliance logos related to the Xiaomi Watch S3, please go to Settings > About Watch > Regulatory.



**Bluetooth®** The Bluetooth® word mark and logos are registered trademarks owned by Bluetooth SIG, Inc. and any use of such marks by Xiaomi Inc. is under license. Other trademarks and trade names are those of their respective owners.

## WEEE Disposal and Recycling Information

All products bearing this symbol are waste electrical and electronic equipment which should not be mixed with



unsorted household waste. Instead, you should protect human health and the environment by handing over your waste equipment to a designated collection point for the recycling of waste electrical and electronic equipment, Appointed by the government or local authorities. Correct disposal and recycling will help prevent potential negative consequences to the environment and human health. Please contact the installer or local authorities for more information about the location as well as terms and conditions of such collection points.

### EU Declaration of Conformity



Hereby, Xiaomi Communications Co., Ltd. declares that the radio equipment type M2323W1 is in compliance with Directive 2014/53/EU. The full text of the EU declaration of conformity is available at the following internet address: <http://www.mi.com/global/service/support/declaration.html>

### Safety Precautions

- For daily use, comfortably tighten the watch around your wrist about one-finger width away from your wrist bone. Adjust the strap to ensure the heart rate sensor can collect data normally.
- When using the watch to measure your heart rate, please hold your wrist still.
- The watch has a water resistance rating of 5ATM (50 meters in depth). It can be worn in the swimming pool, while swimming

near the shore, or during other shallow-water activities. However, it cannot be used in hot showers, sauna, or diving. Furthermore, remember to avoid the watch being directly impacted by swift currents during water sports. The water-resistant function is not permanent and may decline over time.

- The touchscreen of the watch does not support underwater operations. When the watch comes into contact with water, use a soft cloth to wipe away excess water from its surface before use.
- During daily use, avoid wearing the watch too tightly. Keep its contact area dry and regularly clean the strap with water. Immediately stop using the watch and seek medical assistance if the contact area on your skin shows signs of redness or swelling.
- Make sure the power adapter, the charging cable, and the watch are in a dry environment while charging. Do not touch them with wet hands and do not expose them to rain or other liquids.
- If the watch will not be used for an extended period, turn it off after fully charging and then store it in a cool and dry place. Recharge the watch at least once every 3 months.
- The operating temperature of the watch is -10°C to 45°C. If the ambient temperature is too high or too low, the watch may malfunction.
- If the screen is broken, do not touch or try to remove it. Instead, you should stop using the watch immediately and contact an authorized service provider.
- Please use the included charging cable to charge the watch. Only use the power adapters that comply with the local safety standards or certified and supplied by qualified manufacturers.
- Do not disassemble, strike, crush or throw the watch into a fire. Stop using the battery immediately if there is any swelling or fluid leakage.

- The watch has a built-in battery. To avoid damage to the battery or the watch, do not disassemble and replace the battery by yourself. Only the authorized service providers can replace the battery; otherwise, it will cause potential dangers even personal injuries if a wrong type of battery is used.
- Disposal of a battery into fire or a hot oven, or mechanically crushing or cutting of a battery, that can result in an explosion.
- Do not put the battery in trash that is disposed of in landfills. When disposing of the battery, comply with local laws or regulations.
- Leaving a battery in an extremely high temperature surrounding environment that can result in an explosion or the leakage of flammable liquid or gas.
- A battery subjected to extremely low air pressure that may result in an explosion or the leakage of flammable liquid or gas.
- The watch and its accessories may contain small parts. To avoid choking or other hazards or damages caused by the children, keep the watch out of the reach of children.
- Keep the product's indicator away from the eyes of children and animals while the product is in use.
- This watch is not a medical device, any data or information provided by the watch should not be used as a basis for diagnosis, treatment, and prevention of diseases.
- To prevent possible hearing damage, do not listen at high volume levels for long periods.
- The product information is listed on the back case of the watch for your reference.



This equipment has been tested and meets applicable limits for radio frequency (RF) exposure.

Specific Absorption Rate (SAR) refers to the rate at which the body absorbs RF energy. SAR limits depend on whether this equipment is used against the head or on the wrist. The SAR limit is 2.0 watts per kilogram averaged over 10 grams of tissue

for use against the head and 4.0 watts per kilogram averaged over 10 grams of tissue for use on the wrist.

During testing, this equipment radios are set to their highest transmission levels and placed in positions that simulate use next to the mouth, with 5 mm separation, and on the wrist, with no separation.

When placing this equipment near your mouth, keep at least 5 mm of separation to ensure exposure levels remain at or below the as-tested levels.

After testing, the highest SAR values are as follows:

Next to the mouth: 0.132 W/kg

Limbs: 0.232 W/kg

#### Important informations about water resistance

The water resistance of the equipment is not constant and may change over time. Activities that can affect the water resistance of equipment include:

- Impact on hard surfaces or other impacts
- Contact with soap or soapy water (such as bathing or showering)
- Contact with perfumes, solvents, cleaning products, acids, acidic foods, insect repellents, cosmetics, sunscreens, oils or hair dyes
- Exposure of equipment in fast moving water (e.g. water skiing, jumping into water,...)
- Wearing the device in areas where there is steam or in a sauna

Even if the above guidelines are strictly followed, the device may come into inadvertent contact with soap, shampoo, conditioner, lotion, perfume, solvents, cleaning products, acidic or acidic foods, insect repellents, sunscreens, oils, hair dyes or any other substance except



water. Chemicals contained in these products could adversely affect the sealing elements and acoustic membranes, causing irreversible damage to these protections for which the seller assumes no responsibility.

## **WARRANTY NOTICE**

As a Xiaomi consumer, you benefit under certain conditions from additional warranties. Xiaomi offers specific consumer warranty benefits which are in addition to, and not instead of, any legal warranties provided by your national consumer law. The duration and conditions related to the legal warranties are provided by respective local laws. For more information about the consumer warranty benefits, please refer to Xiaomi's official website <https://www.mi.com/en/service/warranty/>. Except as prohibited by laws or otherwise promised by Xiaomi, the after-sales services shall be limited to the country or region of the original purchase. Under the consumer warranty, to the fullest extent permitted by law, Xiaomi will, at its discretion, repair, replace or refund your product. Normal wear and tear, force majeure, abuse or damage caused by the user's negligence or fault are not warranted. The contact person for the after-sale service may be any person in Xiaomi's authorized service network, Xiaomi's authorized distributors or the final vendor who sold the products to you. If in doubt please contact the relevant person as Xiaomi may identify.

The present warranties do not Apply in Hong Kong and Taiwan.

Products which were not duly imported and/or were not duly manufactured by Xiaomi and/or were not duly acquired from Xiaomi or a Xiaomi's official seller are not covered by the present warranties. As per Applicable law you may benefit from warranties from the non-official retailer who sold the product. Therefore, Xiaomi invites you to contact the retailer from whom you purchased the product.

**Disclaimer:** The illustrations of the product, accessories, user interfaces, and other elements in this User Manual are schematic diagrams for reference only, and they may be slightly different from the actual product. This manual is published by Xiaomi or an enterprise in Xiaomi's ecosystem. Typographical errors and inaccurate information in this manual or the related programs and/or equipment may change without prior notice. Such changes will be indicated in the latest version of the manual.

Manufactured by: Xiaomi Communications Co., Ltd.

Address: #019, 9th Floor, Building 6, 33 Xi'erqi Middle Road, Haidian District, Beijing, China, 100085

For further information, please go to [www.mi.com](http://www.mi.com)

Importer:

Beryko s.r.o.

Pod Vinicemi 931/2, 301 00 Plzeň

[www.beryko.cz](http://www.beryko.cz)

V1.0



PAP



711608079981