



User Manual

Support

For further information, download the HP MP100 User Guide from: <https://www.hp.com/support>

Global Aiptek Inc. - HP Branded Product Group
1020 Milwaukee Ave, Suite 270, Deerfield, IL 60015, USA
Email: help@hp-projector.com
Web: www.hp-projector.com

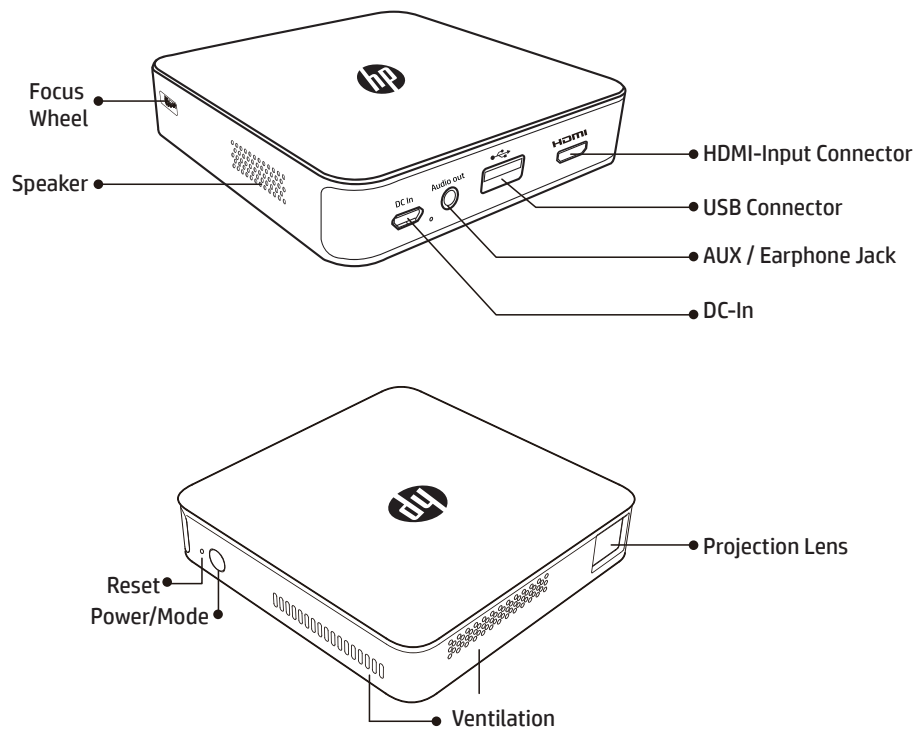
User Manual

NE

Package content

- MP100 Projector
- HDMI Cable
- USB Cable
- Carry Pouch
- Tripod
- Power Adapter
- Quick Start Guide
- Warranty Card

Product Overview



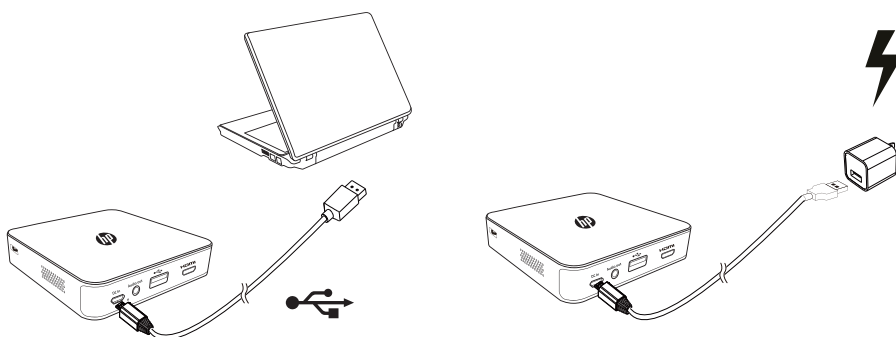
User Manual

EN


Charging the product


Connect the USB cable to a Mobile phone power adapter or PC / Notebook to charge.

** The Product will be fully charged after 5 hrs from zero percent battery capacity.



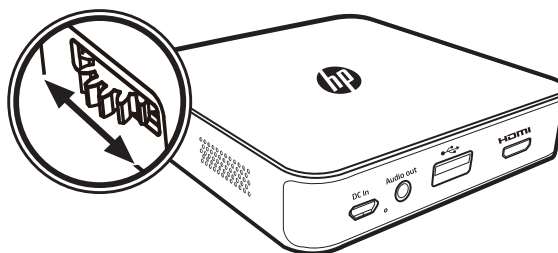
Turning on/off the Projector

Press the power key  for 8 sec., the projector will Power on.

Long-Press the power key  for 8 sec. in operation, the projector will Power off.

Adjusting the Focus


Adjust the focus by using the focus wheel on the left side to achieve a sharper image



User Manual

NE

Toggling between iOS and Android mode

Press the power button  shortly, it will change connection mode between iOS and Android, then follow the screen instructions to connect your phone to project.

iOS Mode



Android Mode

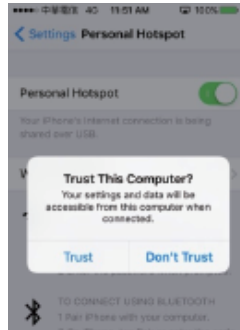


User Manual

EN

USB Projection from iPhone

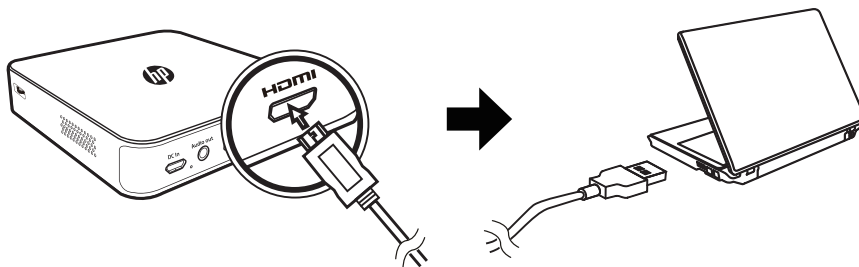
1. Make sure the device is set to "iOS" mode.
2. Connect your lightning cable (not included) from iPhone to the projector then click "Trust" in iPhone.



3. After a few seconds, the screen will be mirror projected.

Projecting from PC/NB or other media devices

Using A to C type HDMI cable (mini HDMI) to connect the projector from PC/NB or another media device.



User Manual

NE

Troubleshooting

If your projector does not seem to be functioning properly, please check the following before you contact an authorized service center.

| Symptom | Check Point |
|---|---|
| The projector does not turn on after pressing the power button for more than 8 seconds. | Ensure the battery is fully charged. |
| The projected image is blurred. | 1. Adjust the focus by using focus wheel. 2. Check if the projection lens is dirty, clean it if required. |
| The surface temperature of the projector is hot . | It is normal for this projector to generate moderate heat during operation. |
| The projector does not display when connecting to a notebook PC. | 1.Check if the HDMI cable is plugged correctly. 2. Make sure the PC has been switched to projector display. |
| Abnormal performance | If the projector is running slow, freezing, crashing or locking up during the operation, you can try to insert a slim, pointy object into the reset hole to trigger a hardware reset. |

User Manual

EN

Specifications

| Item | Description |
|-------------------------------------|--|
| Optical Technology | DLP |
| Light Source | RGB LED |
| Resolution | 854 x 480 Pixels (WVGA) |
| Contrast Ratio | 1000:1 |
| Projection Image Size | 20" ~100" (51 ~ 255cm) |
| Projection Distance | 21" ~125 " (53 ~ 319cm) |
| Aspect Ratio | 16:9 |
| Throw Ratio (Diagonal: Distance) | 1.2 |
| Brightness | Up to 100 lumens |
| Focus | Manual |
| Offset | 0 % |
| Connectivity | Wi-Fi, HDMI-IN, USB,Audio-Out-Jack |
| Wi-Fi | 802.11b/g/n |
| Internal Speaker | YES |
| Power Input | 5V / 3A |
| Battery Type | Embedded 2400 mAh, Li-polymer rechargeable battery |
| Battery Power | 80 min |
| Battery Consumption | 12W |
| Dimension (L x W x H) | 97.8 x 97.8 x 23mm 3.85" x 3.85 " x 0.90 " |
| Weight | 140 g / 0.30 lb |
| Operating Temperature | 5 °C ~ 35 °C |

* All specifications are subject to change without notice.