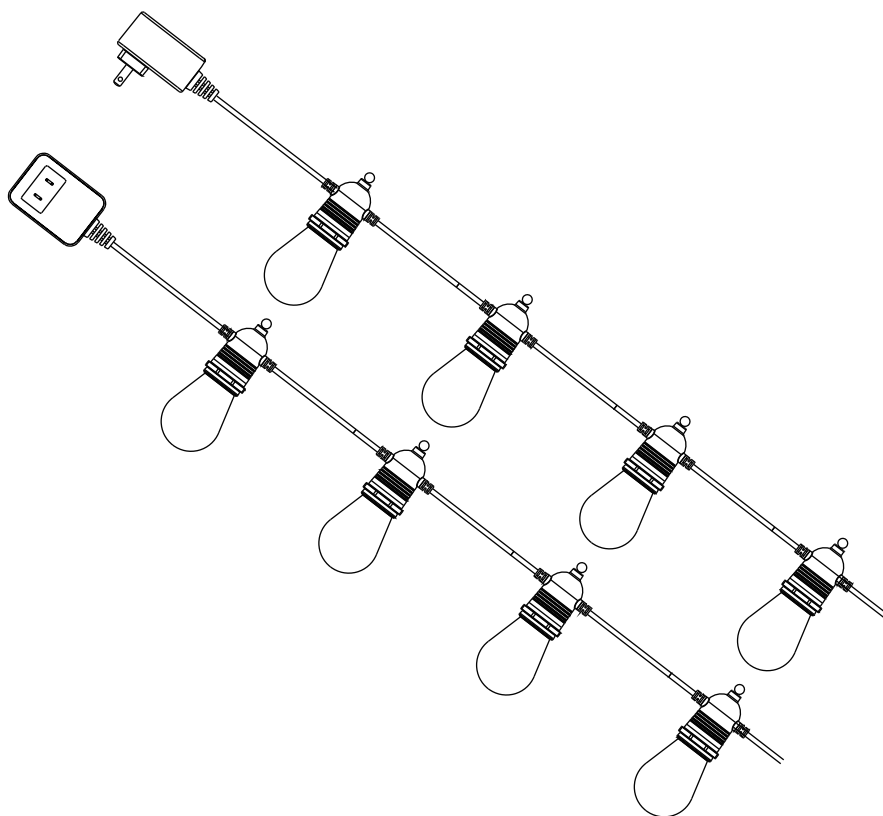


# USER MANUAL LED STRING LIGHT



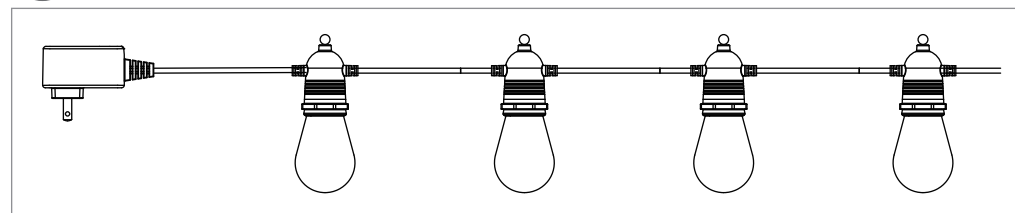
| EN |

## PACKING LIST

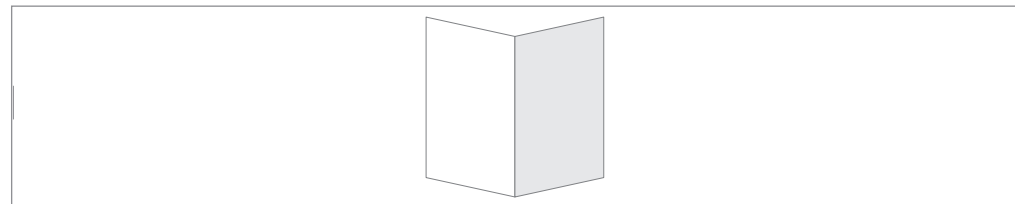
EN

|              | 54FT | 104FT |
|--------------|------|-------|
| String Light | 1    | 1     |
| User Manual  | 1    | 1     |
| Spare bulb   | 2    | 4     |
| Zip ties     | 20   | 40    |

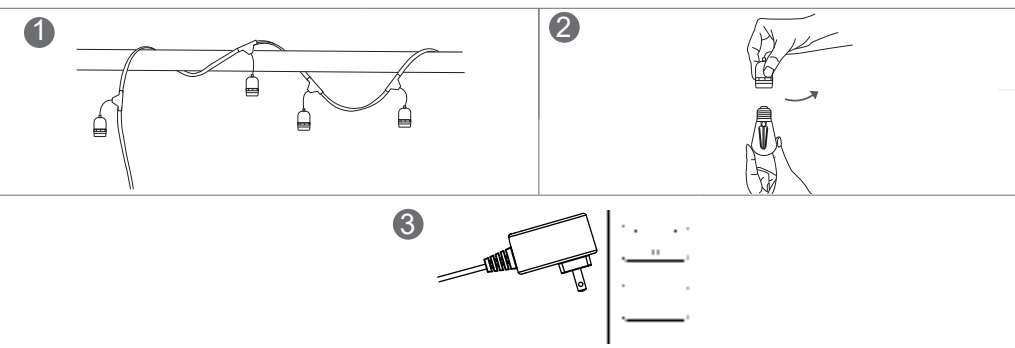
1



2



## OPERATION



# SPECIFICATION

|                   |                    |                    |
|-------------------|--------------------|--------------------|
| Power             | 16W                | 32W                |
| Waterproof Level  | IP65               | IP65               |
| String Length     | 54FT               | 104FT              |
| Color Temperature | 2700 ±270K         | 2700 ±270K         |
| Quantity Of Bulbs | 16pcs+2 spare bulb | 32pcs+4 spare bulb |
| Lamp Spacing      | 3.2FT              | 3.2FT              |
| Bulb Type         | LED                | LED                |
| Material          | ABS+PET            | ABS+PET            |
| Power Per Bulb    | 1 W                | 1 W                |

## Note

- 1.The power adapter should not be exposed in rainy environments.
- 2.It is recommended that the installation position of the power supply should not be too high to avoid difficulties in plugging and unplugging.
- 3.Bulbs should not be installed upside down or immersed in water, and each bulb should be tightened.

## QUALITY ASSURANCE

All of our string lights provide 3-year warranty. If you are not 100% satisfied with it, please feel free to contact us.

Email: [amzsupport@yeah.net](mailto:amzsupport@yeah.net)



For outdoor use, install in a waterproof socket!

### **FCC Caution:**

This device complies with part 15 of the FCC Rules. Operation is subject to the following two conditions: (1) this device may not cause harmful interference, and (2) this device must accept any interference received, including interference that may cause undesired operation.

Any changes or modifications not expressly approved by the party responsible for compliance could void the user's authority to operate the equipment.

**NOTE:** This equipment has been tested and found to comply with the limits for a Class B digital device, pursuant to Part 15 of the FCC Rules. These limits are designed to provide reasonable protection against harmful interference in a residential installation. This equipment generates, uses and can radiate radio frequency energy and, if not installed and used in accordance with the instructions, may cause harmful interference to radio communications. However, there is no guarantee that interference will not occur in a particular installation.

If this equipment does cause harmful interference to radio or television reception, which can be determined by turning the equipment off and on, the user is encouraged to try to correct the interference by one or more of the following measures:

- Reorient or relocate the receiving antenna.
- Increase the separation between the equipment and receiver.
- Connect the equipment into an outlet on a circuit different from that to which the receiver is connected.
- Consult the dealer or an experienced radio/TV technician for help.

To maintain compliance with FCC's RF Exposure guidelines, This equipment should be installed and operated with minimum distance between 20cm the radiator your body: Use only the supplied antenna