

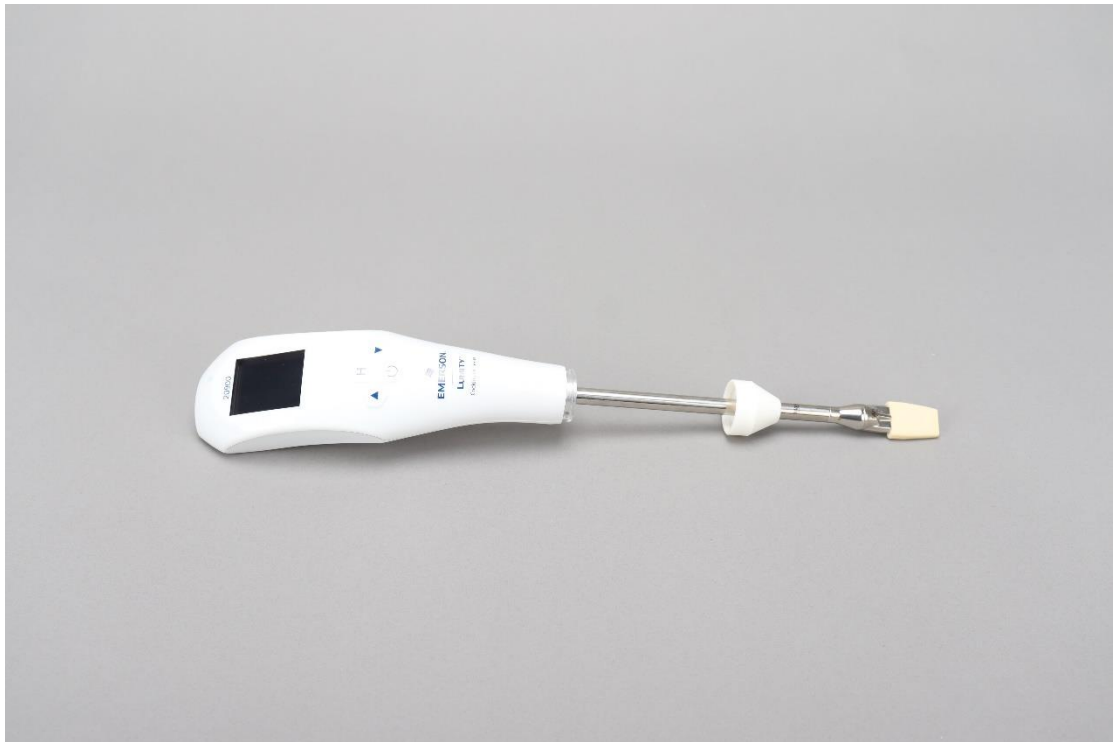
Probe Replacement Instruction

1: Take out the device



2: Rotate and pull down the silicone cap along the front of the probe





3: Use a Phillips screwdriver to loosen the two screws here



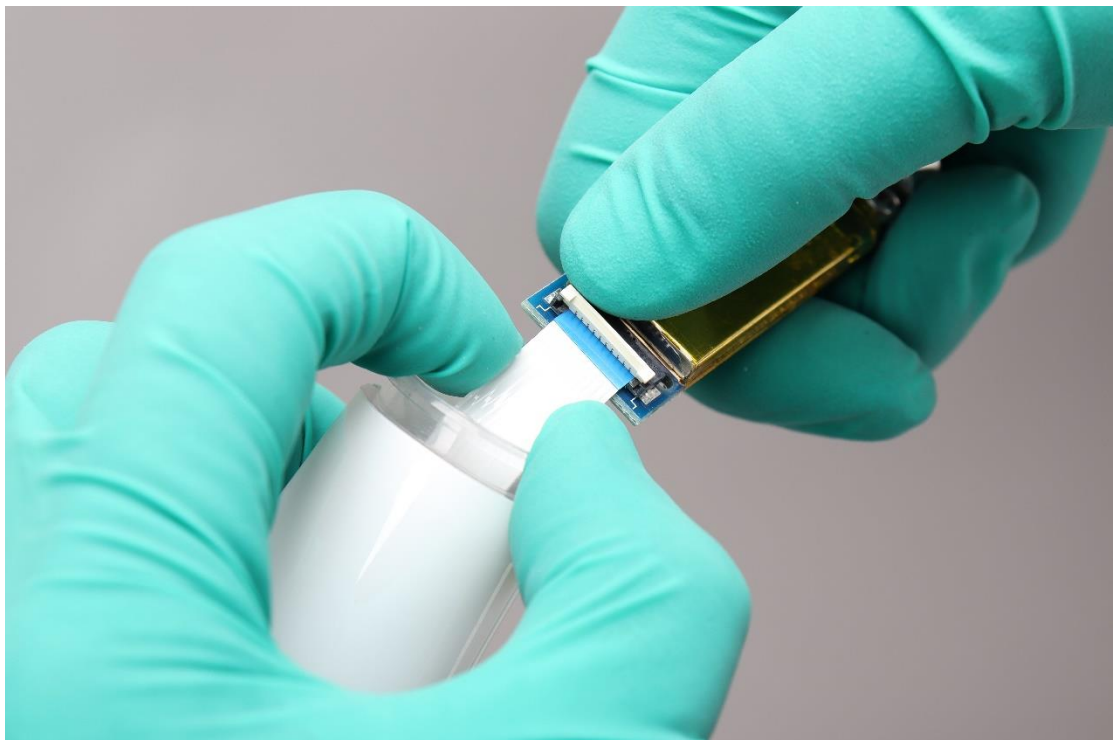


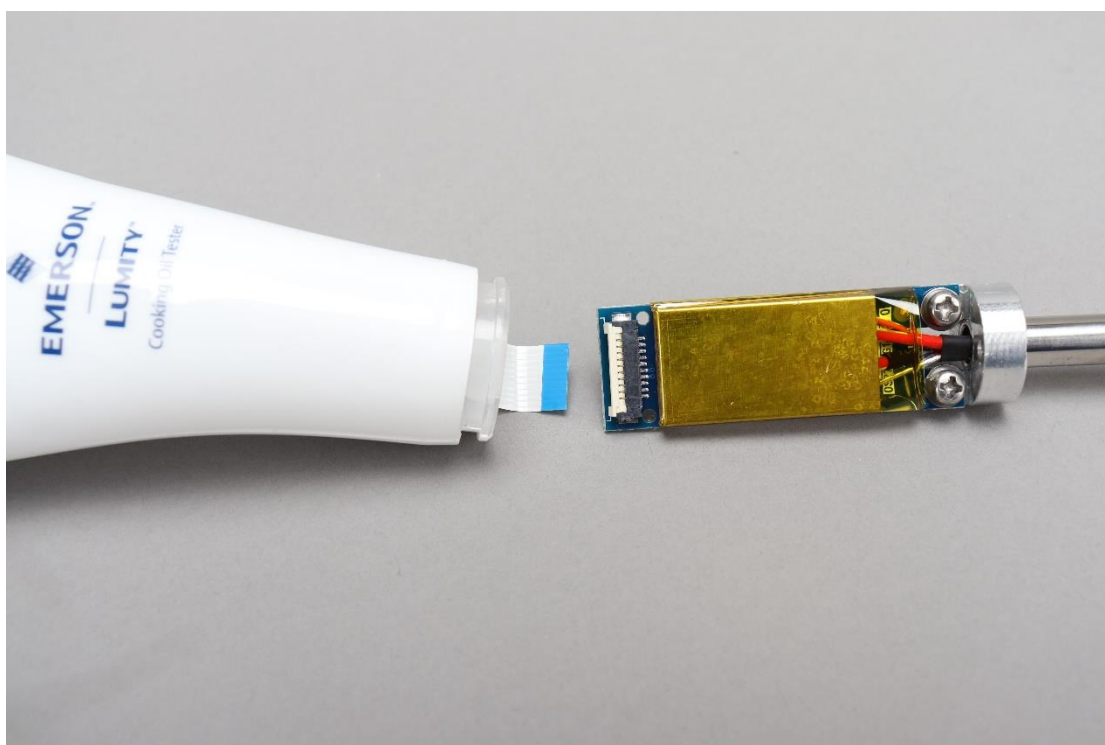
4: Gently pull out the probe rod in the vertical direction until you see the cable terminal



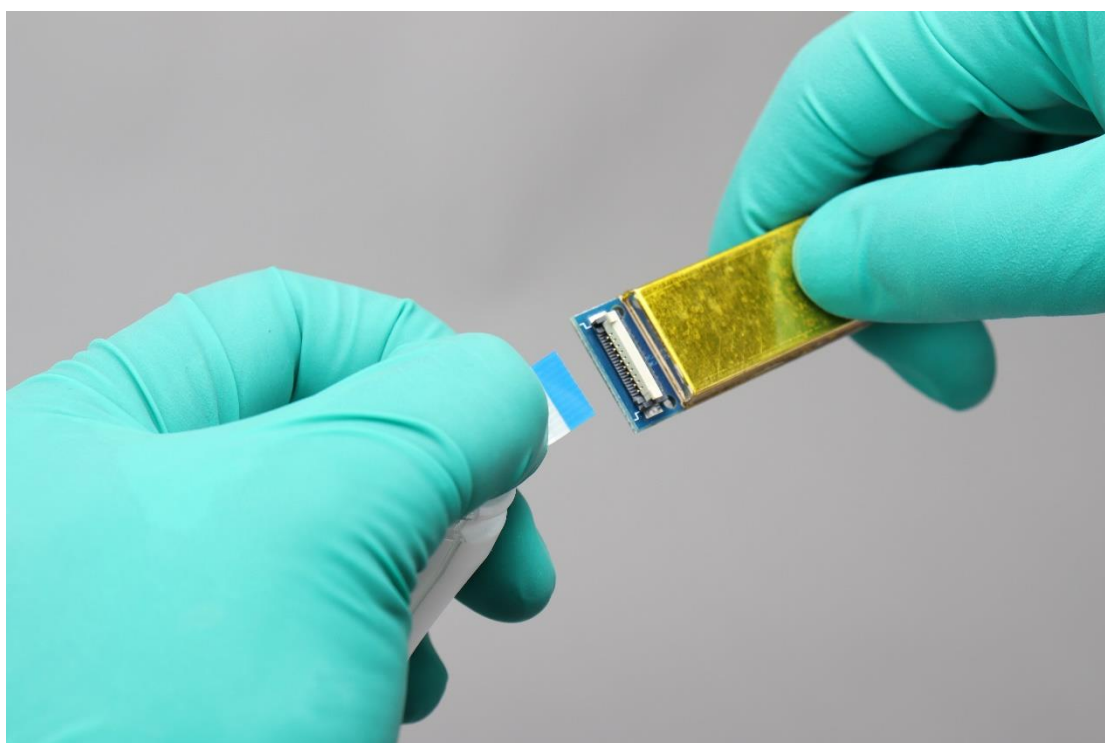


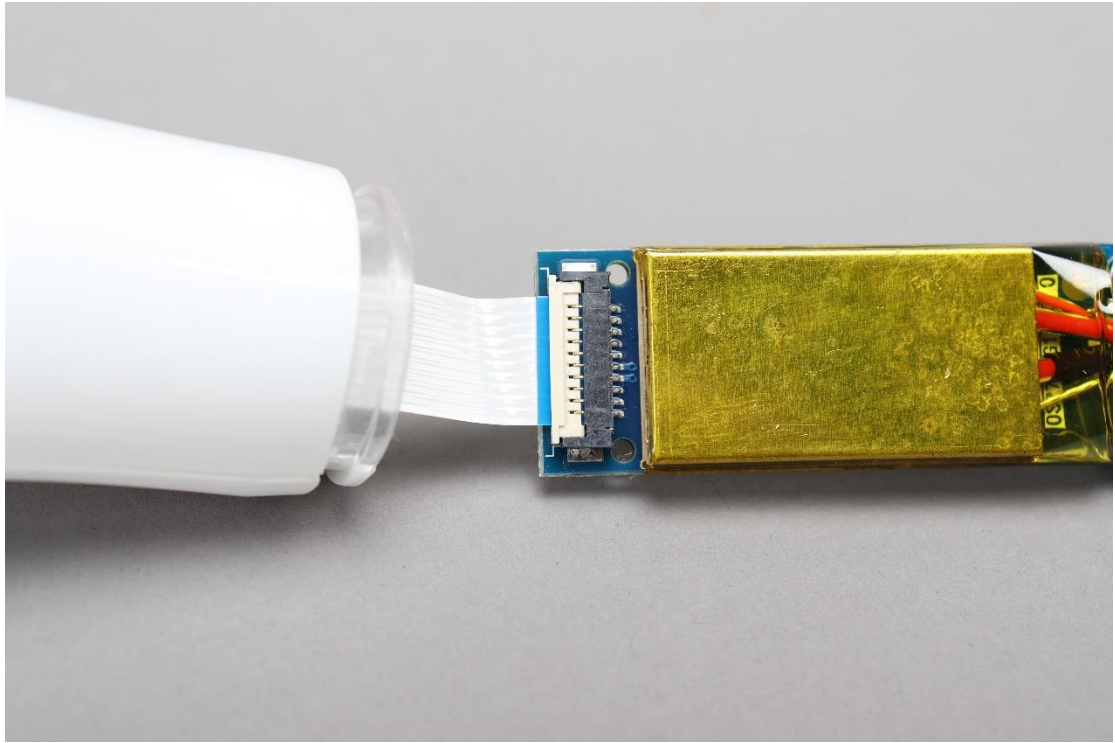
5: Lift the white flip cover of the cable terminal to ninety degrees, and gently pull out the cable





6: Insert the cable into the terminal according to the color shown in the figure, and press down the white cable terminal





7: Insert the probe into the handle and fix it with screws





8: Pull up the silicone cap to its original position

