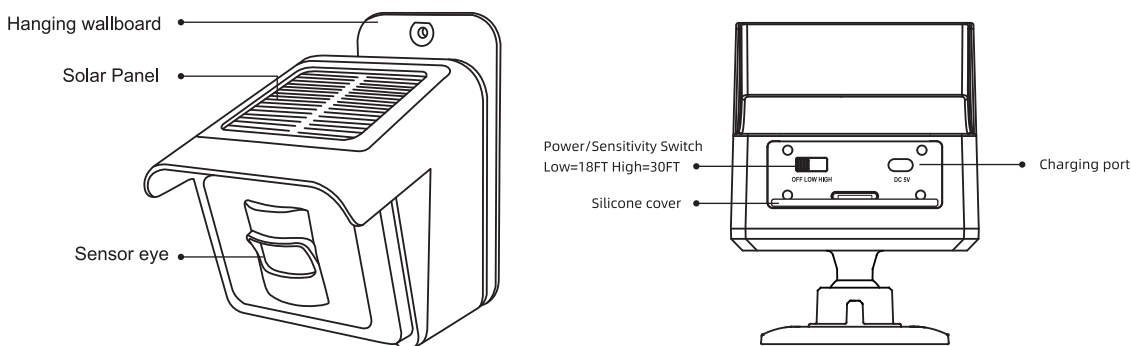


Quick Start Guide

Overview



Power and Pairing Sensor

Add(pair) a new sensor

If you want to add additional motion sensors that you need to pair the motion sensors with the base station. Please refer to the following steps.

- a. First power on the base station and then press and hold the Mode button for 3 seconds to enter the pairing mode and the Zone A flashes quickly for 30 seconds and waiting for pairing. Short press the power button to exit the pairing mode.
- b. Power on the motion sensor and wave your hand in the front of the sensor eye to trigger the motion sensor that you can see a red-light flashes once in the sensor eye.
- c. The base station will produce a unique tone to indicate that the pairing has been successful. The zone number will be increased automatically, e.g. Zone A -> Zone B -> Zone C -> Zone D.
- d. You can also specify this zone number manually that press and hold the Mode for 3S to enter the pairing mode and then short press the Mode button to change the zone number that your favorite, then wave your hand to trigger the motion sensor to complete the pairing.

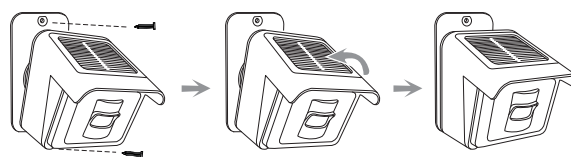
Note:

1. You need to pair the motion sensor with the base station when you use it first time.
2. Each channel has independent music tips for easy differentiation.

1. Before installing the PIR Sensor, recharge the sensor (with 18650 battery attached) using the AC adapter to ensure a full charge. The blue light will illuminate while charging. The blue light will turn off once the battery is fully charged.

Note: The sensor has been tested several times in the factory. If the blue light wont illuminate, the battery may be fully charged, you can install it directly.

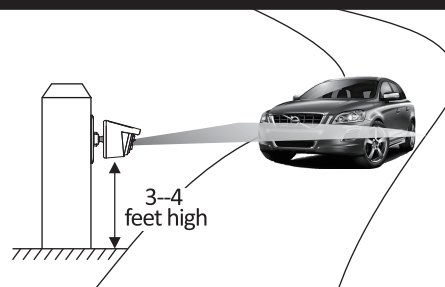
2. High / Low / Off Switch: First, open the black silicone seal cap at the bottom of the PIR Motion Sensor, then turn on the sensor by switching to High or Low. Set the detection range to High (30feet), Low (18 feet), or turn sensor Off.
3. Test the PIR Motion Sensor by waving your hand in front of the sensor. The Base Station will produce a unique tone based upon the sensor's setting.



Installing the Sensor

- 1) Mount the waterproof PIR Motion Sensor vertically on a solid surface 3-5 feet (1-1.5m) above the ground (rotate sensor to access screw holes). The sensor should be able to swivel as needed. Position the sensor to avoid direct sunlight shining on the sensor eye while simultaneously keeping the solar cell facing upward.
- 2) Vehicle Alert Installation: The best mounting position for detecting vehicles is about 4 feet (1.2m) high. The PIR sensor detects the movements with heat sources; please adjust the sensor eye with horizontal angle to the engine of the car.

Note :The sensors operate best in the -4F to 140F degree range. The sensors will not work properly outside of this temperature range.



Troubleshooting

- **The PIR Motion Sensor operates, but the base station does not respond.**
Check the sensor switch settings (Refer to Instruction Manual - Assembly & Setup) .

184*254mm

材质：80G双胶纸 印黑白色 单面印刷