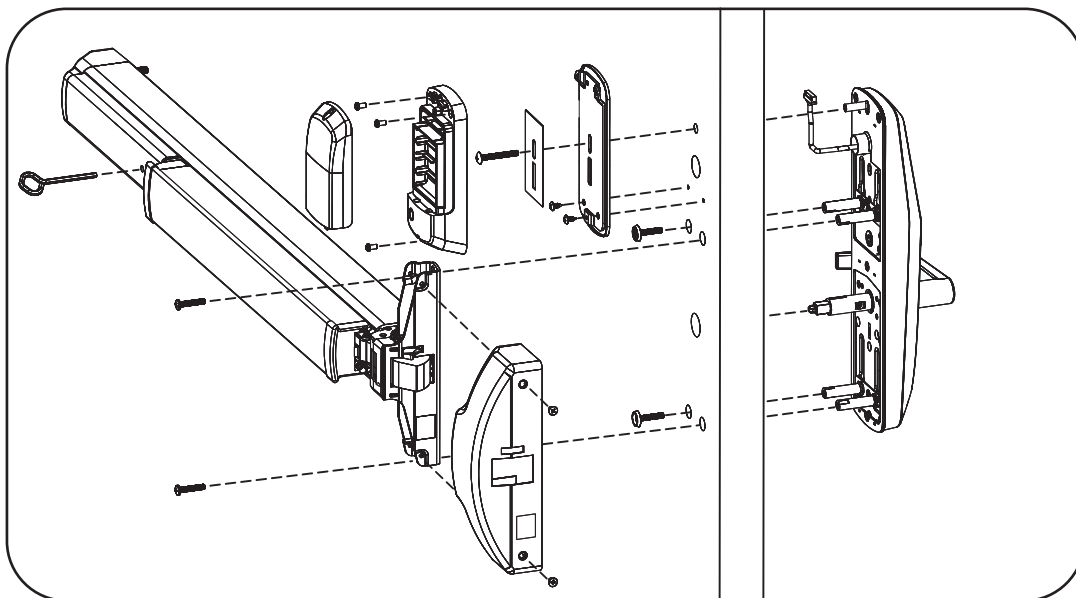


WARNING

This product can expose you to lead which is known to the state of California to cause cancer and birth defects or other reproductive harm. For more information go to www.P65warnings.ca.gov.

08/2018

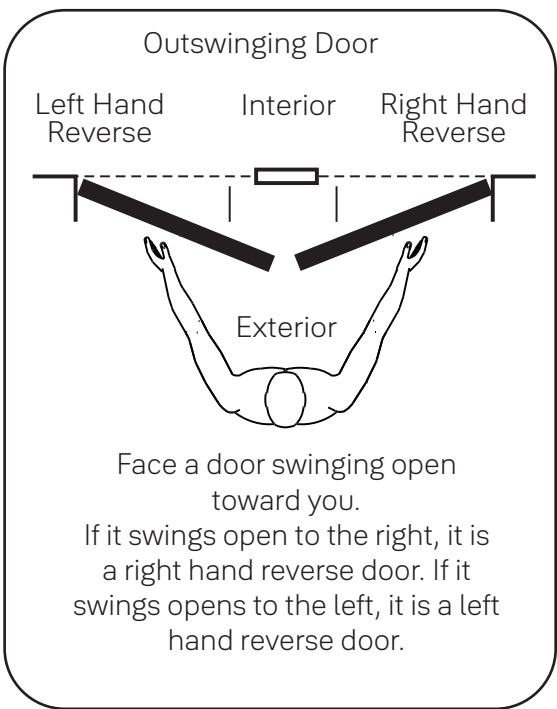
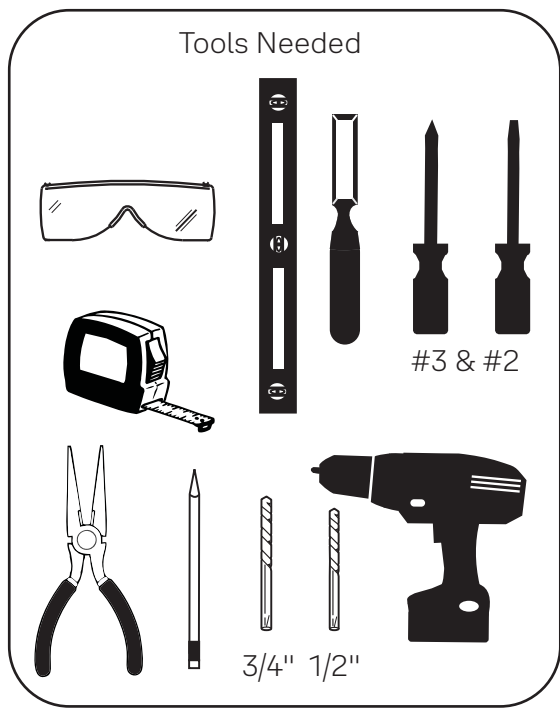
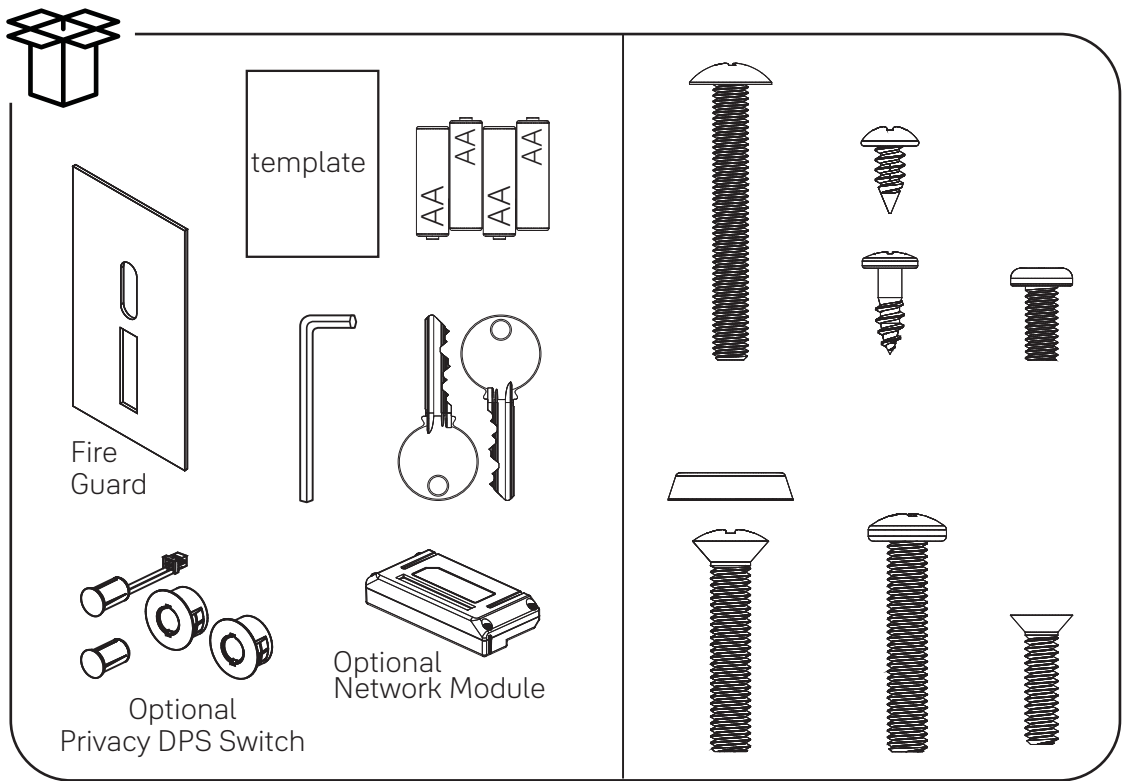


Basic Model:NTT622-ACC

Retrofitting or modifying this product may impact fire rating, safety features and warranty.
Consult with code specifications to ensure compliance with all codes and ratings.



Before You Begin

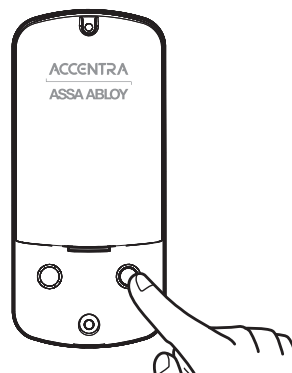
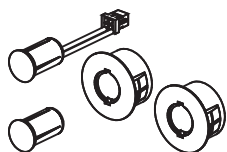


0 optional

Door Position Switch Option

Privacy DPS Switch

With Door Position Switch installed and door closed, all keypad functions can be disabled by Privacy Button.



1 Tools

Prepare Door

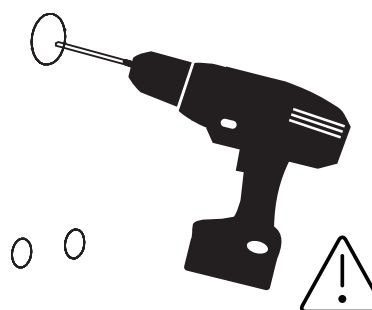
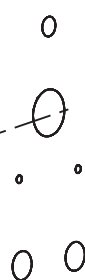
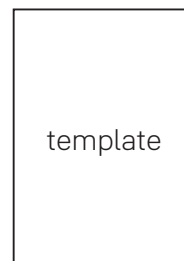
DPS Option for Privacy Function

Wood Door:
3/8" Dia. Thru to
Hole in Door Face

*Metal Door:
3/4" Dia. Thru to
Hole in Door Face



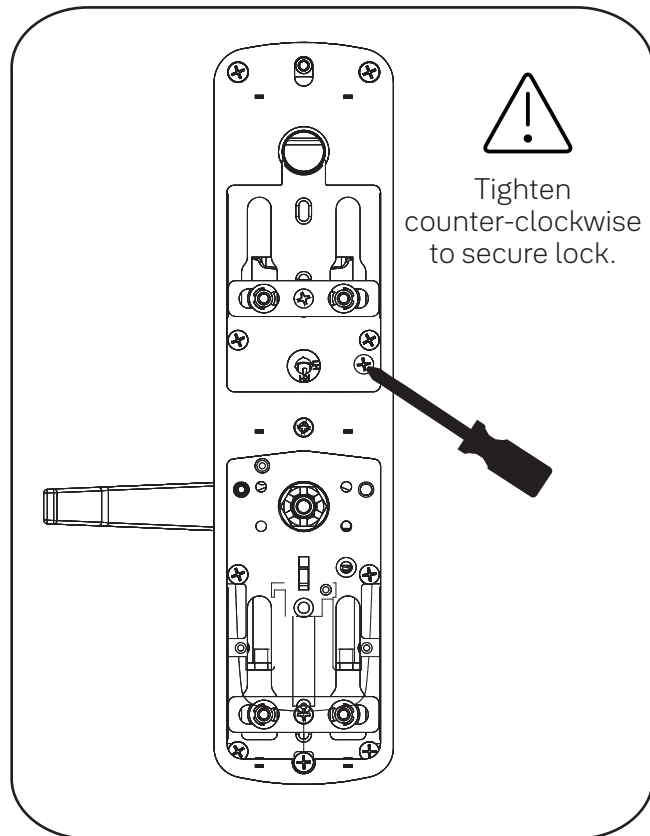
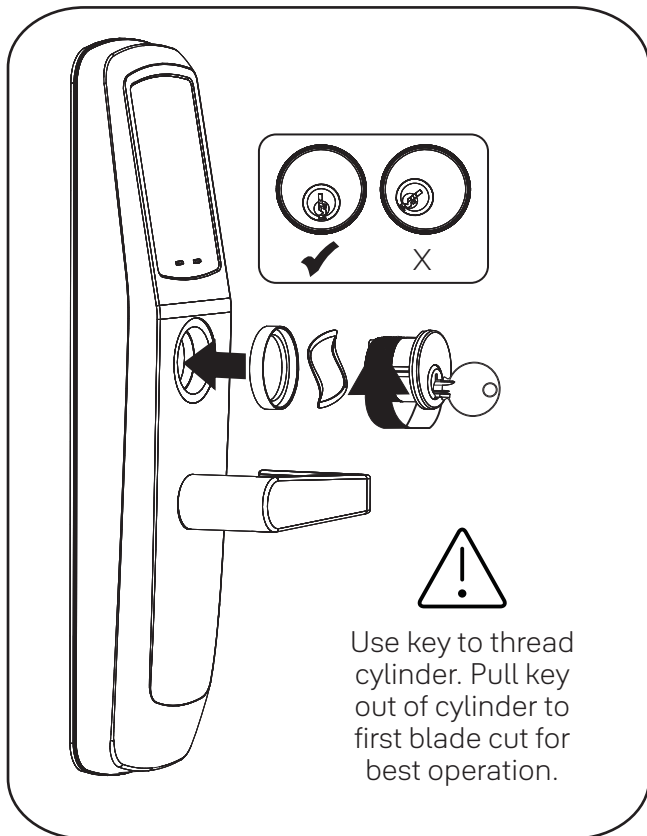
***Metal Door Installations**
Supplied plastic collar
MUST be installed for DPS
to function properly.



Drill holes 1/2 way thru
door then complete
from other side to
prevent splitting.

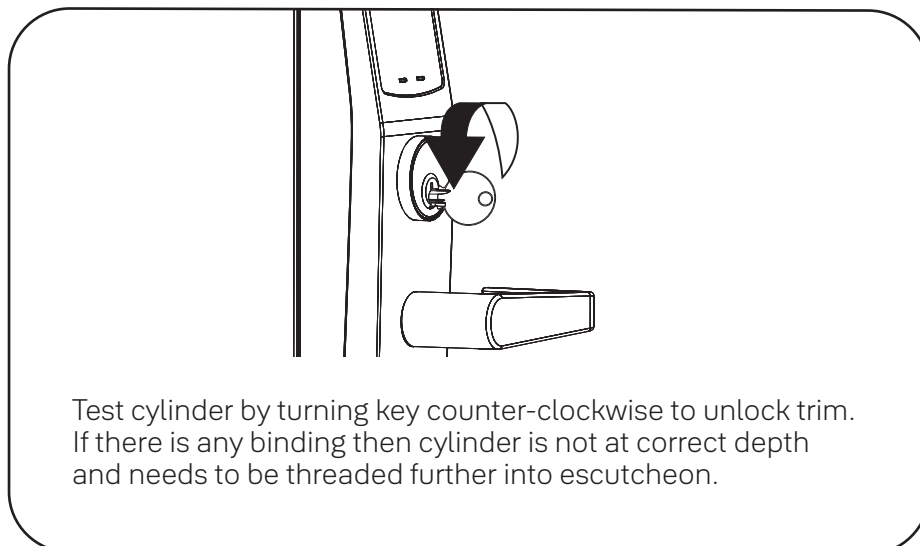
2

Install Cylinder



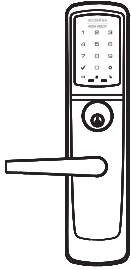
⚠ If using cylinder other than 1-1/8", a new collar must be used that is sized appropriately for cylinder length.

Test Cylinder

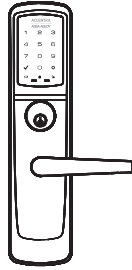


3

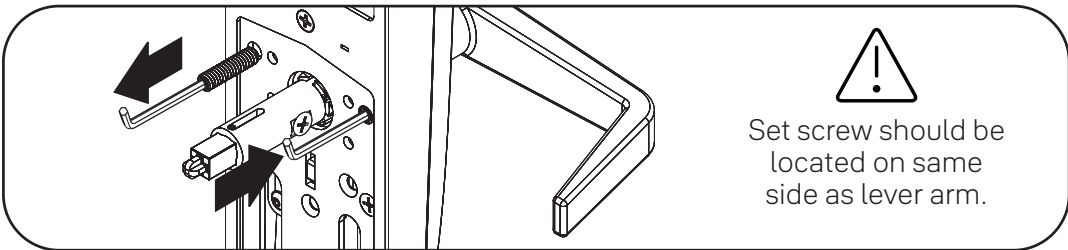
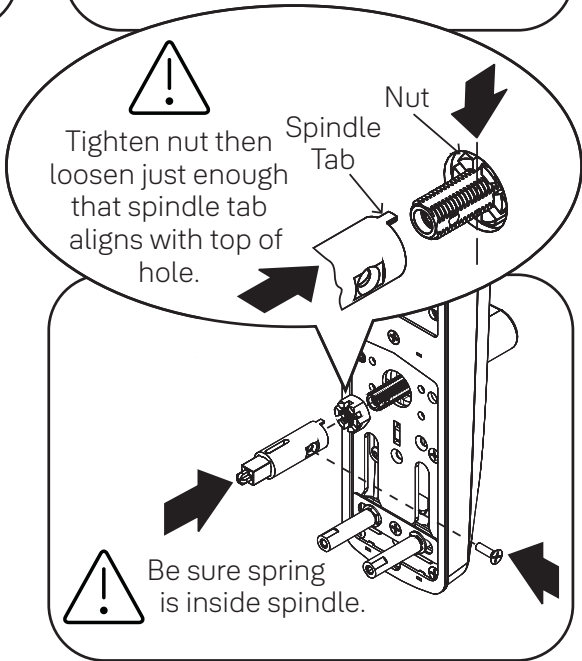
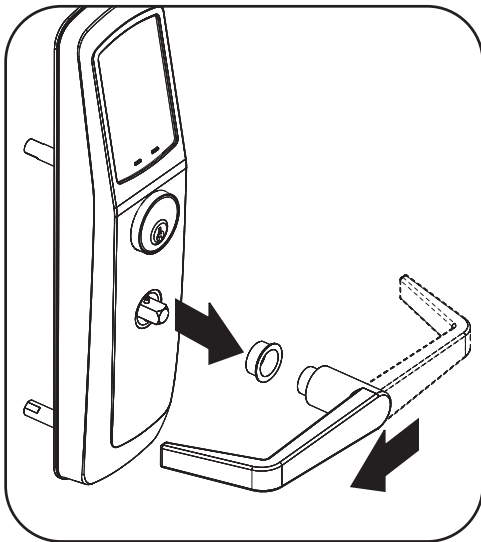
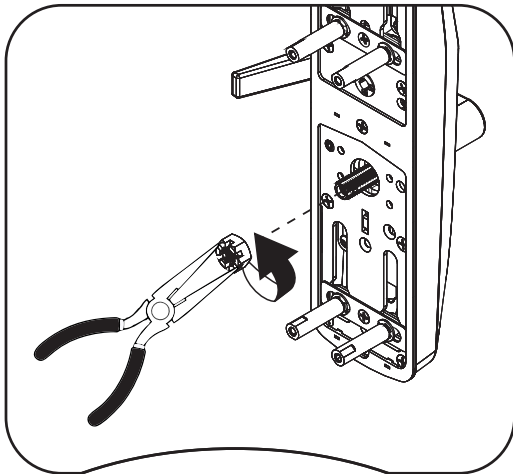
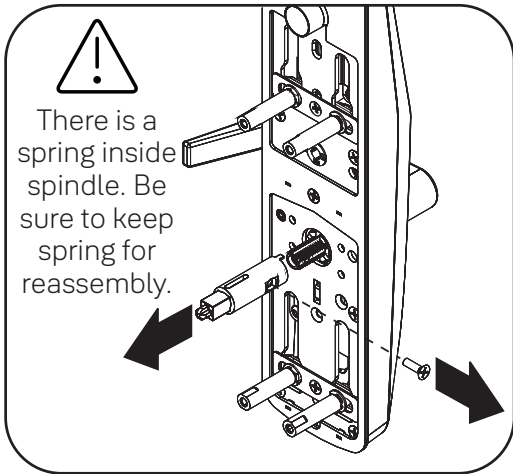
Change Hand of Trim (if necessary)



Left Hand Reverse

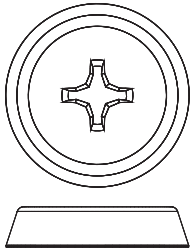


Right Hand Reverse





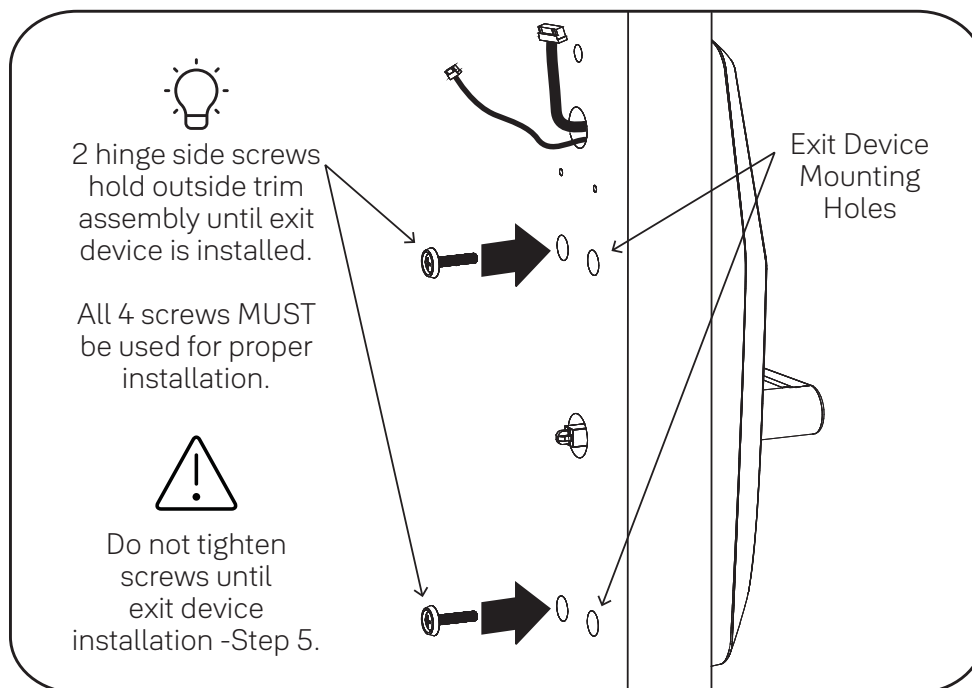
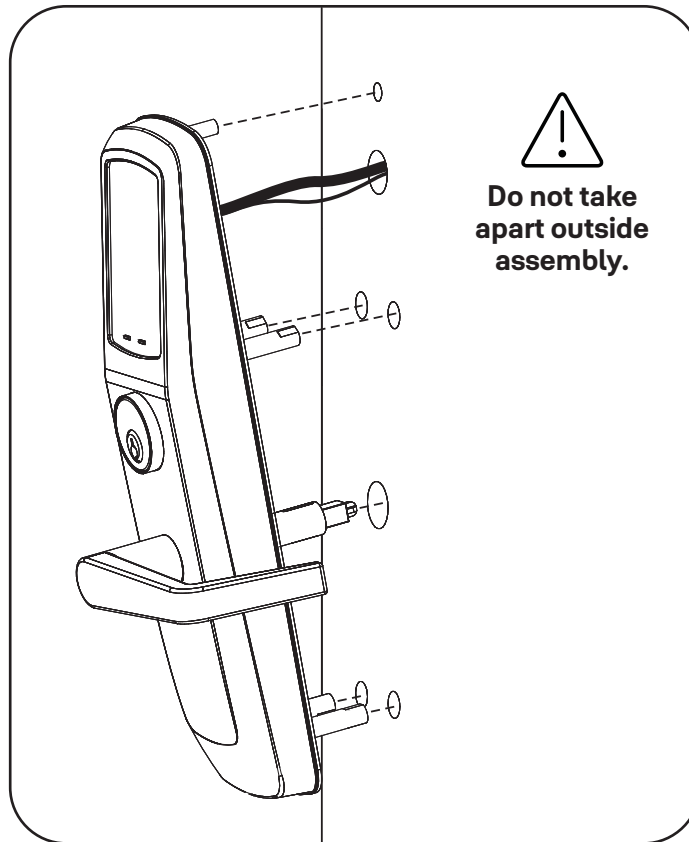
Install Outside Trim Assembly

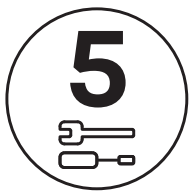


#10-32 x 1" OHPMS



x2





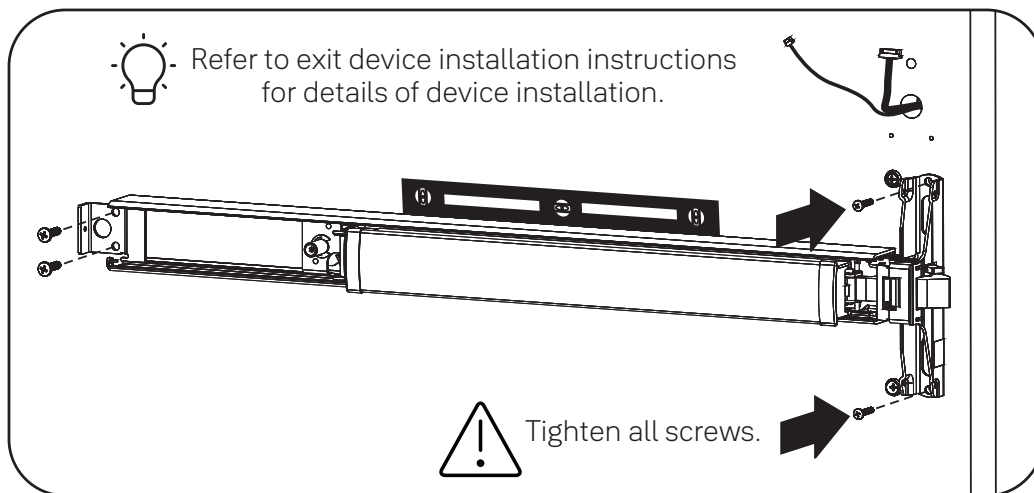
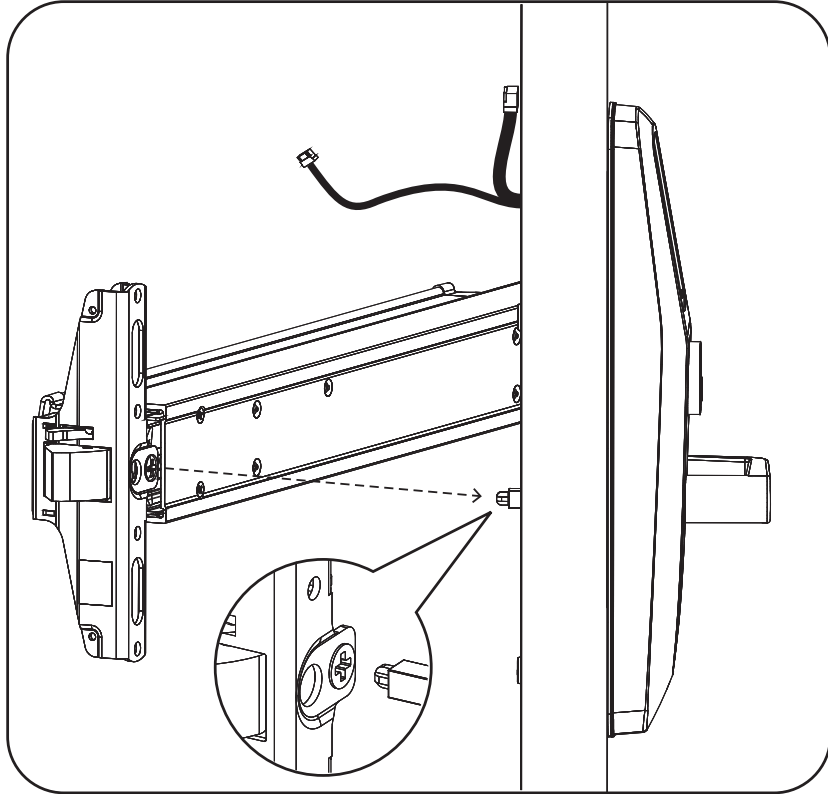
Install Exit Device



#10-32 x 1" PHMS



x2



Test Mechanical Lock Function by Key, Lever and Keypad

6

Install Strike and Optional DPS



#10-24 PFHMS



x3

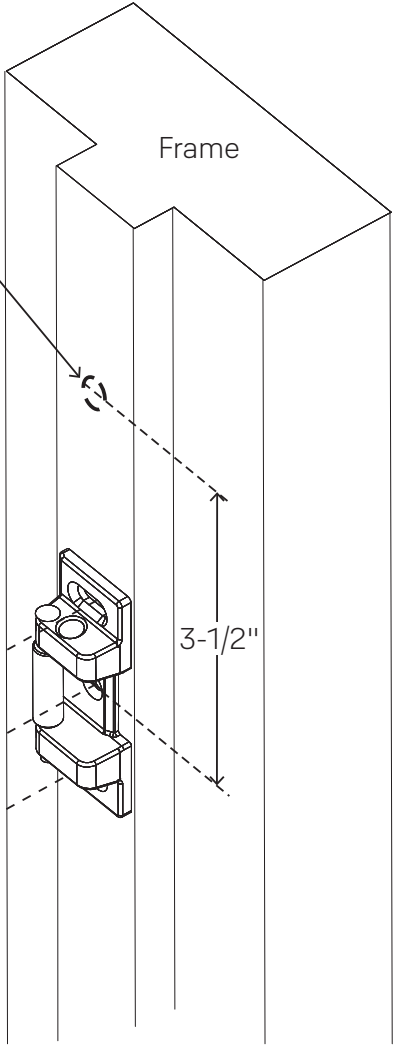
DPS Option
for Privacy Function

*Metal Frame:
3/4" Dia. x 1"

See Instructions with DPS Kit



*Supplied plastic collar **MUST**
be installed for DPS to
function properly.



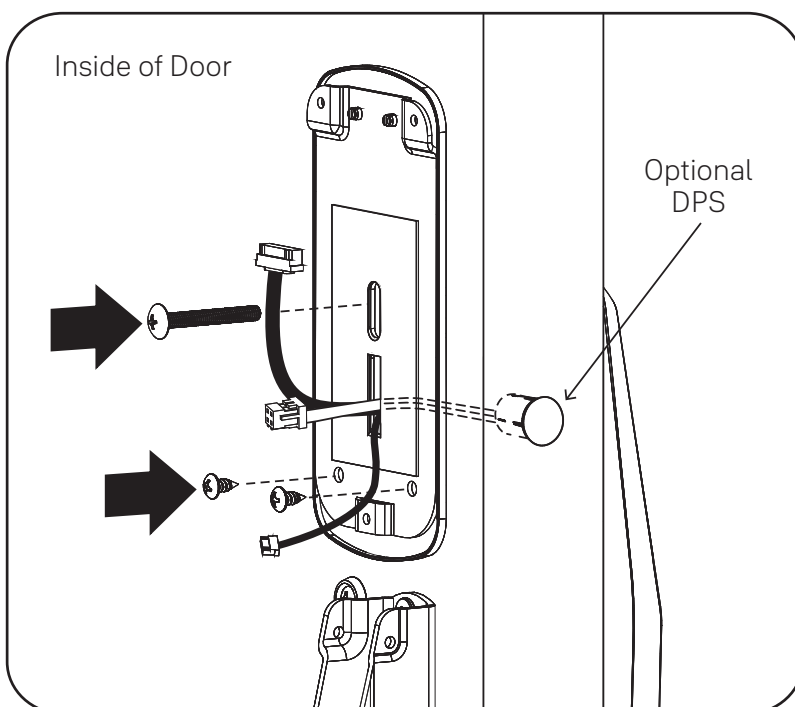
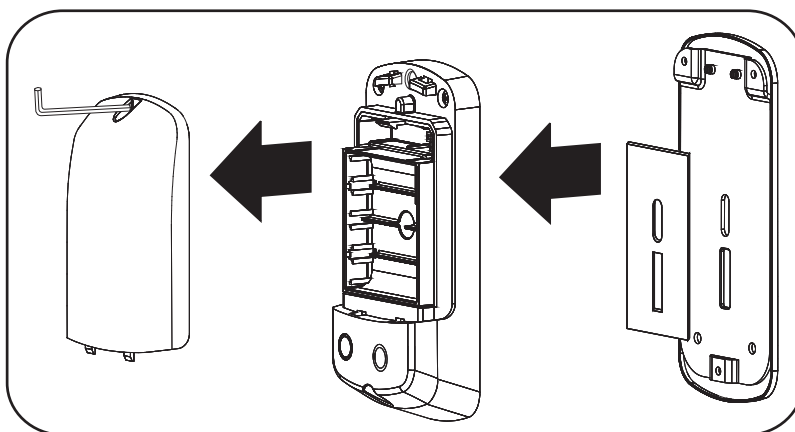
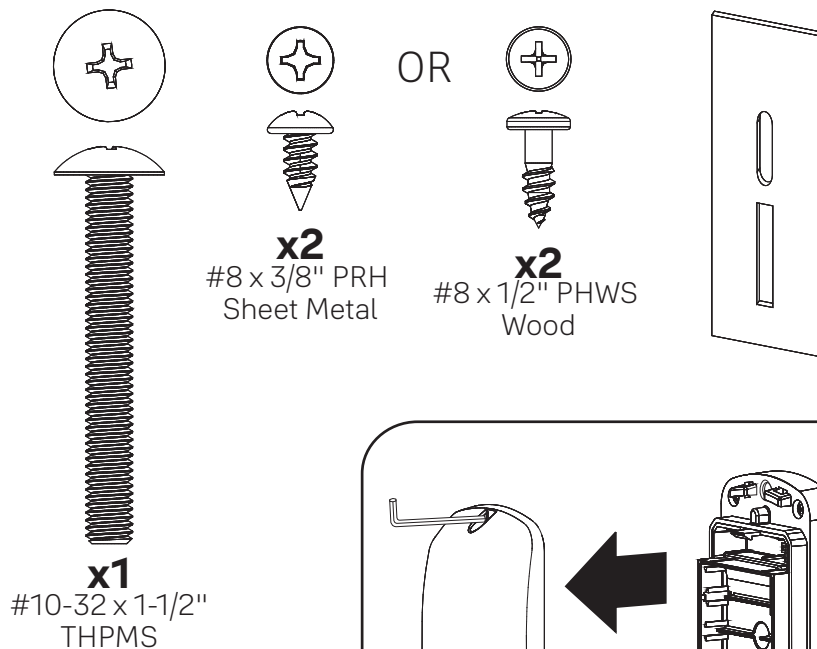
Strike must be centered with exit device bolt. For
proper engagement, door should remain latched
and not rattle when pushed, pulled or shaken in/out.

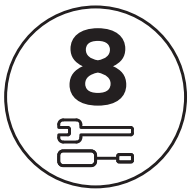


Refer to exit device installation instructions
for details of strike installation.

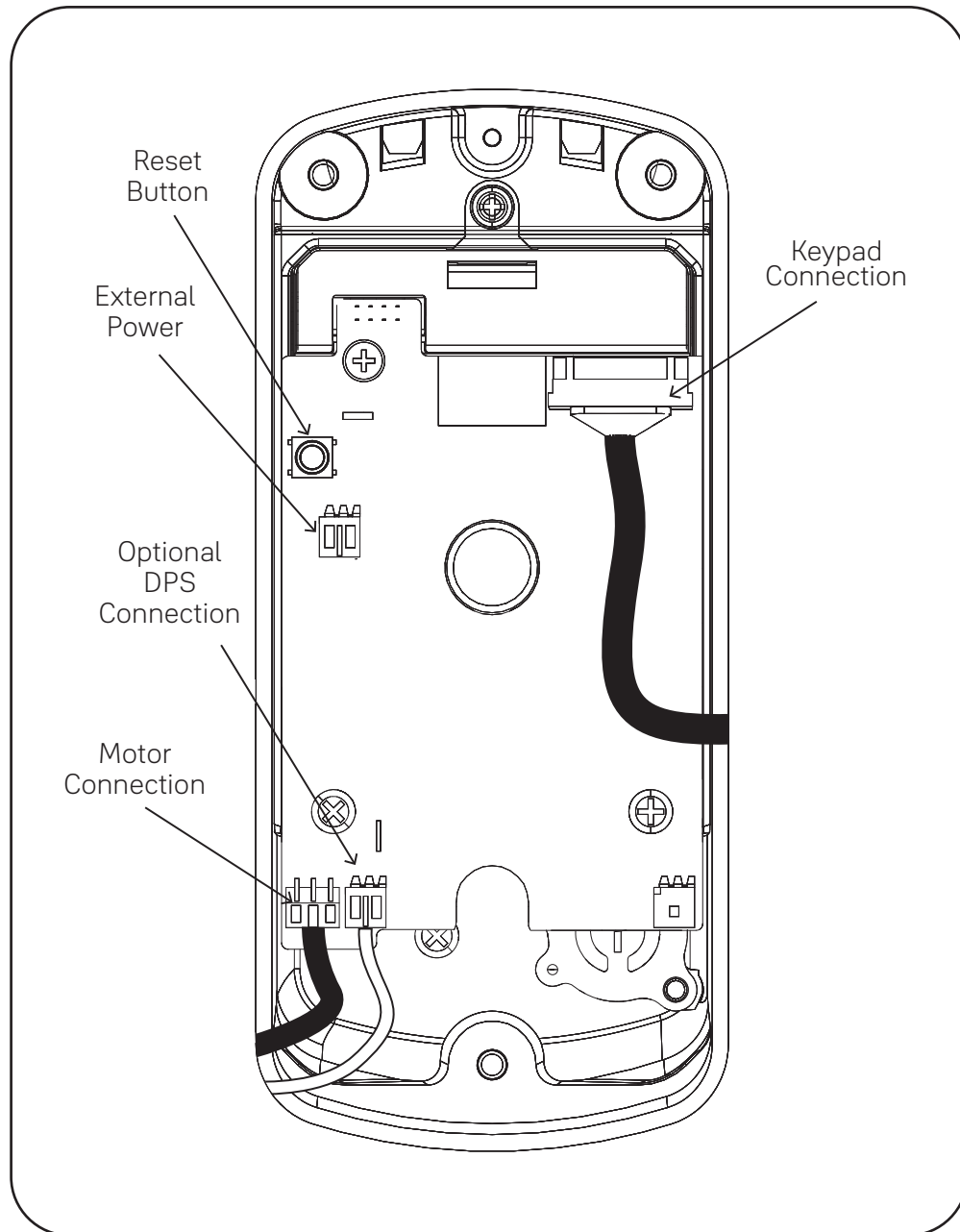
7

Install Inside Mounting Plate





Attach Cables to Inside Lock

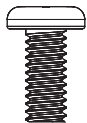




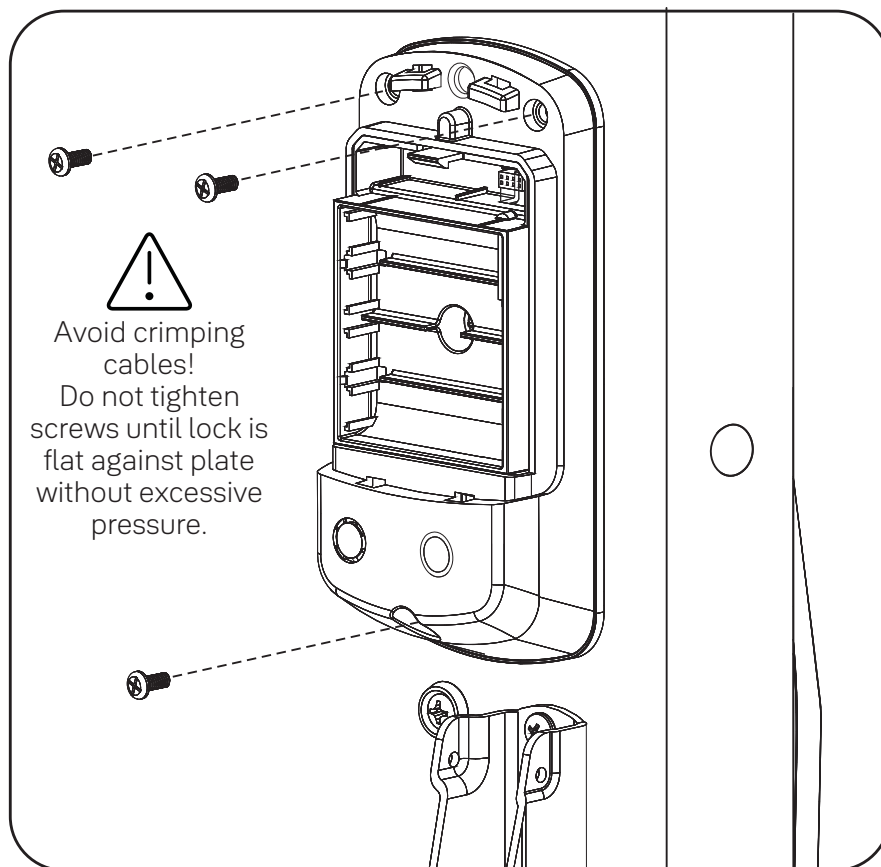
Install Inside Lock



#8-32 x 5/16" PHMS



x3



FCC:

This device complies with part 15 of the FCC Rules. Operation is subject to the following two conditions: (1) This device may not cause harmful interference, and (2) this device must accept any interference received, including interference that may cause undesired operation.

Any changes or modifications (including the antennas) to this device that are not expressly approved by the manufacturer may void the user's authority to operate the equipment.

Note : This equipment has been tested and found to comply with the limits for a Class B digital device, pursuant to part 15 of the FCC Rules. These limits are designed to provide reasonable protection against harmful interference in a residential installation. This equipment generates, uses and can radiate radio frequency energy and, if not installed and used in accordance with the instructions, may cause harmful interference to radio communications. However, there is no guarantee that interference will not occur in a particular installation. If this equipment does cause harmful interference to radio or television reception, which can be determined by turning the equipment off and on, the user is encouraged to try to correct the interference by one or more of the following measures:

- Reorient or relocate the receiving antenna.
- Increase the separation between the equipment and receiver.
- Connect the equipment into an outlet on a circuit different from that to which the receiver is connected.
- Consult the dealer or an experienced radio/TV technician for help.

Modifications not expressly approved by the manufacturer could void your authority to operate the equipment under FCC rules.

Industry Canada:

This device contains licence-exempt transmitter(s)/receiver(s) that comply with Innovation, Science and Economic Development Canada's licence-exempt RSS(s). Operation is subject to the following two conditions:

- (1) This device may not cause interference.
- (2) This device must accept any interference, including interference that may cause undesired operation of the device.

L'émetteur/récepteur exempt de licence contenu dans le présent appareil est conforme aux CNR d'Innovation, Sciences et Développement économique Canada applicables aux appareils radio exempts de licence. L'exploitation est autorisée aux deux conditions suivantes :

- (1) L'appareil ne doit pas produire de brouillage;
- (2) L'appareil doit accepter tout brouillage radioélectrique subi, même si le brouillage est susceptible d'en compromettre le fonctionnement.

FCC and IC RF Radiation Exposure Statement:

This equipment complies with FCC and IC RF Radiation exposure limits set forth for an uncontrolled environment.

This device and its antenna must not be co-located or operating in conjunction with any other antenna or transmitter.

RF du FCC et IC d'exposition aux radiations: Cet équipement est conforme à l'exposition de FCC et IC rayonnements RF limites établies pour un environnement non contrôlé.

L'antenne pour ce transmetteur ne doit pas être même endroit avec d'autres émetteur sauf conformément à FCC et IC procédures de produits Multi-émetteur.

Support Contacts:

24/7 Support Email:

support.aehg@assaabloy.com

Technical Support Phone:

1-800-810-WIRE (9473)

Monday – Thursday 8:00 AM to 6:00pm

Friday 9:00 AM to 5:00 PM

Website:

<https://www.accentra-assaabloy.com>

Email for orders:

Orders.Accentra@assaabloy.com

ASSA ABLOY ACCENTRA™ provides a comprehensive range of high-performance door hardware and streamlined digital access control solutions for commercial, institutional, and multi-resident facilities.

THE ASSA ABLOY GROUP is the world's leading manufacturer and supplier of locking solutions, dedicated to satisfying end-user needs for security, safety and convenience.

ASSA ABLOY ACCENTRA is a business associated with ASSA ABLOY Access and Egress Hardware Group, Inc., an ASSA ABLOY Group company. Copyright © 2024, ASSA ABLOY Access and Egress Hardware Group, Inc. All rights reserved. Reproduction in whole or in part without the express written permission of ASSA ABLOY Access and Egress Hardware Group, Inc. is prohibited.