



**Affordable. Reliable. Home Improvement.**

## **BACKPACK SPRAYER**

**MODEL:XF-16M15A-US & XF-16M15A**

Technical Support and E-Warranty Certificate  
[www.vevor.com/support](http://www.vevor.com/support)



# VEVOR

Affordable. Reliable. Home Improvement.

## BACKPACK SPRAYER

MODEL:XF-16M15A-US & XF-16M15A



This is the original instruction, please read all manual instructions carefully before operating. VEVOR reserves a clear interpretation of our user manual. The appearance of the product shall be subject to the product you received. Please forgive us that we won't inform you again if there are any technology or software updates on our product.

## SAFETY INSTRUCTIONS



### EYE PROTECTION AND PROTECTION FOOT PROTECTION DUST MASK PROTECTION WEAR WASH YOUR HAND

**! For your safety and the safety of others, the following precautions must be observed when operating the sprayer:**

1. During spraying operation, the personnel shall wear clothes in strict accordance with the regulations, wear masks, glasses, hats, gloves, or protective clothing against pesticide penetration, and shall not work naked.
2. It is strictly prohibited to spray toxic solutions such as pesticides on people or animals during use.
3. Patients with mental illness or serious diseases, drunken people, and people without operation knowledge are prohibited from using this machine. People who have just taken strenuous exercise, have not had a good rest, or have an insufficient sleep, as well as women in the period of lactation, should not be engaged in this work.
4. The operator must wash all parts of the body and clean all kinds of clothing after use.
5. When handling pesticides, the safety instructions provided by the pesticide manufacturer should be followed.
6. Do not use the special liquid.

### **WARNING:**

1. Do not leave machines and tools or store them in unattended places. Turn off the power when not in use.
2. Do not disassemble or change this machine.
3. Operators must spray pesticides in front of the wind direction and shall not work under high temperatures for a long time.
4. Before each use of the battery (including the new machine), please charge the battery for 4-8 hours. When the battery is not charged, cover the charging base tightly to prevent water from getting wet.
5. Try to avoid working without water to avoid damaging the diaphragm of the

water pump.

6. Before use, try spraying with clean water to check whether there is water leakage at the base and whether the atomization effect is good. Only when everything is normal can you prepare liquid medicine for the operation.

7. When adding liquid medicine, it must pass through the filter screen. If there are impurities, the normal use of the machine will be affected.

8. If the liquid medicine overflows, please dry it immediately. Battery connectors, electrical components, and wire connectors shall not be exposed to liquid medicine to avoid corrosion.

9. Please do not use non-water bath powder because it cannot be dissolved into the liquid. And the suspended solids in the medicine tank will precipitate at the bottom, causing clogging of the filter screen and pipeline, thus affecting the pump's service life. The use of chemical liquids and special working fluids is prohibited.

10. When the liquor spraying is completed, turn off the power switch or regulating switch first, and then release the injection switch after the pump stops working.

11. Never point the spray wand at another person or animal, whether the sprayer is on or not.

12. The maximum temperature of the liquid to be sprayed must not exceed 43℃. Do not use the sprayer if the temperature of the work environment is up to 45℃ or lower than -10℃.

## MODEL AND PARAMETERS

|                  |  |
|------------------|--|
| Model            | XF-16M15A-US & XF-16M15A                           |
| Capacity         | 4 Gallons(16L)                                     |
| Pump             | Diaphragm pump                                     |
| Working Pressure | 0-90psi  |
| Max. Performance | (3.3±0.3) L/min                                    |
| Charger          | Input: 100-240V 50/60Hz 0.6A<br>Output: DC21V 1.0A |
| Battery          | Lithium battery (DC18V, 4AH)                       |

## STRUCTURE DIAGRAM



| No. | Name         | No. | Name                     |
|-----|--------------|-----|--------------------------|
| 1   | Tank Cap     | 8   | Spray bar clamp          |
| 2   | Barrel body  | 9   | Spraying nozzle          |
| 3   | Battery      | 10  | Spray gun clamp          |
| 4   | Ammeter      | 11  | Pressure regulating knob |
| 5   | Hose         | 12  | Switch                   |
| 6   | Spraying gun | 13  | Strap                    |
| 7   | Spray Lance  | 14  | Backrest                 |

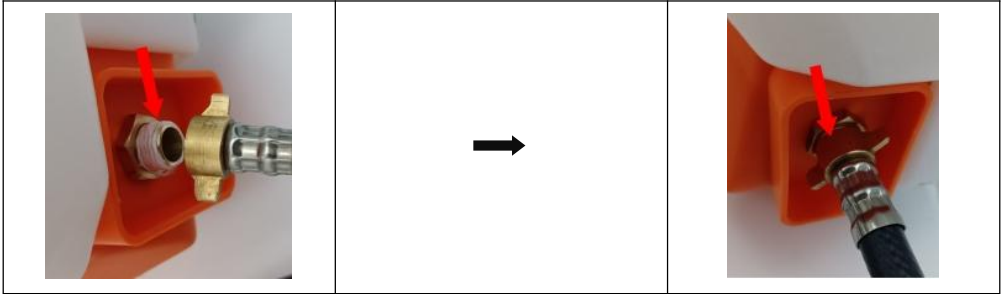
## COMPONENTS

| No. | Picture   | Name and Qty             | No. | Picture   | Name and Qty                      |
|-----|---|--------------------------|-----|---|-----------------------------------|
| 1   |    | Barrel body(x1)          | 15  |    | Metal conversion adapter(x1)      |
| 2   |    | Tank cap(x1)             | 16  |    | Quick-release fitting(x1)         |
| 3   |    | Tank filter(x1)          | 17  |    | Fan-shaped nozzle(x1)             |
| 4   |    | Battery(x1)              | 18  |    | Adjustable single-hole nozzle(x1) |
| 5   |    | HoseΦ6.5mmX1.2m(x1))     | 19  |    | Windproof nozzle(x1)              |
| 6   |    | Straps(x1)               | 20  |    | F-type double nozzle(x1)          |
| 7   |    | Spray gun(x1)            | 21  |    | Single-head copper nozzle(x1)     |
| 8   |    | Plastic spray rod(x1)    | 22  |    | 3 head brass nozzle(x1)           |
| 9   |   | Metal spray rod(x1)      | 23  |   | 3 head nozzle(x1)                 |
| 10  |  | Spray gun clamp(x1)      | 24  |  | Y-type double nozzle(x1)          |
| 11  |  | Spray bar clamp(x1)      | 25  |  | Pressure regulating knob cap(x1)  |
| 12  |  | Split cotter(x1)         | 26  |  | Green seal ring13*17(x2)          |
| 13  |  | Charger(x1)/XF-16M15A    | 27  |  | O-ring seal 14.5*2.8(x2)          |
| 14  |  | Charger(x1)/XF-16M15A-US | 28  |  | User manual(x1)                   |

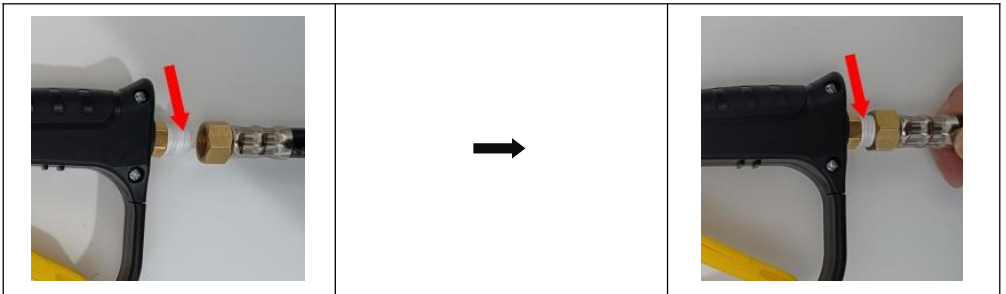
## ASSEMBLY

### STEP 01: ASSEMBLE THE LANCE SET

1. Wrap the seal tape around the brass screw 1~2 times at water outlet of sprayer's bottom, then screw the brass nut of the either end of the hose.

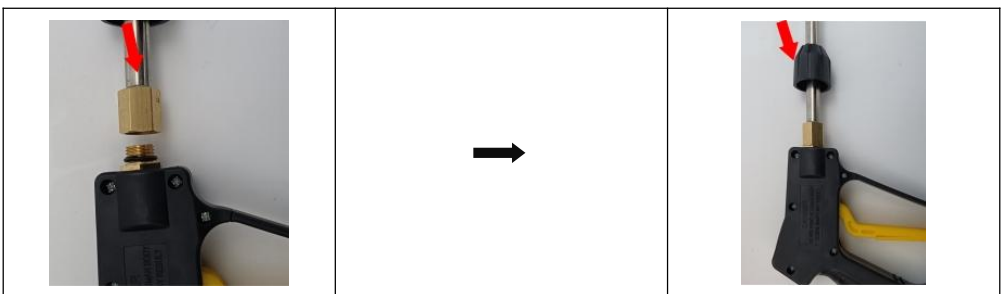


2. Wrap the seal tape around the brass screw 1~2 times at the bottom of spray gun, then screw the brass nut of the hose.



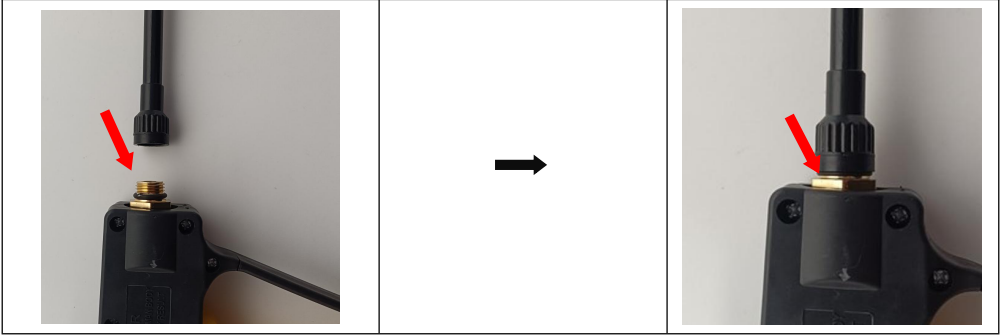
3. Connect the lance with the spray gun, then screw the nut tightly.

1)The following are the connection methods for the spray gun and metal rod.



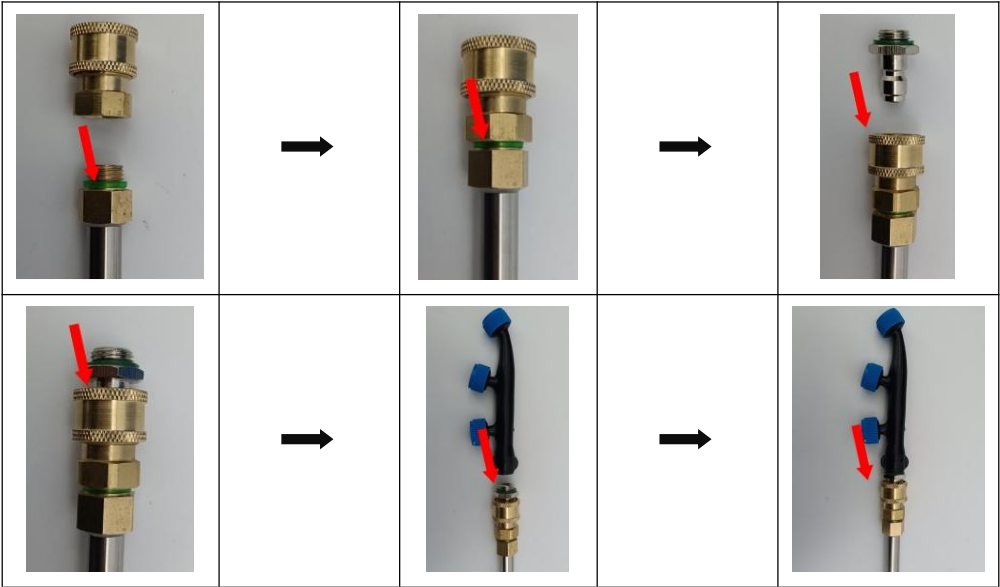


2)The following are the connection methods for the spray gun and plastic rod.

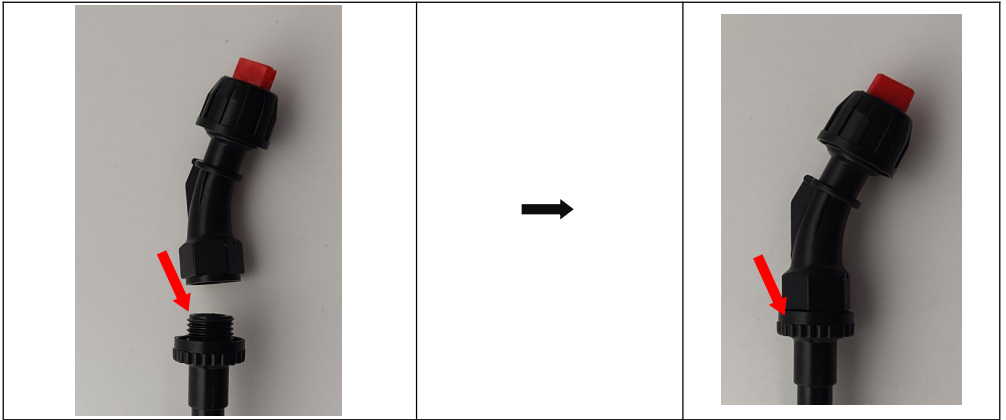


4. Connect the nozzle with spray rod, then screw the nut tightly.

1) The following are the connection methods for the nozzle and metal rod.



2) The following are the connection methods for the nozzle and plastic rod.

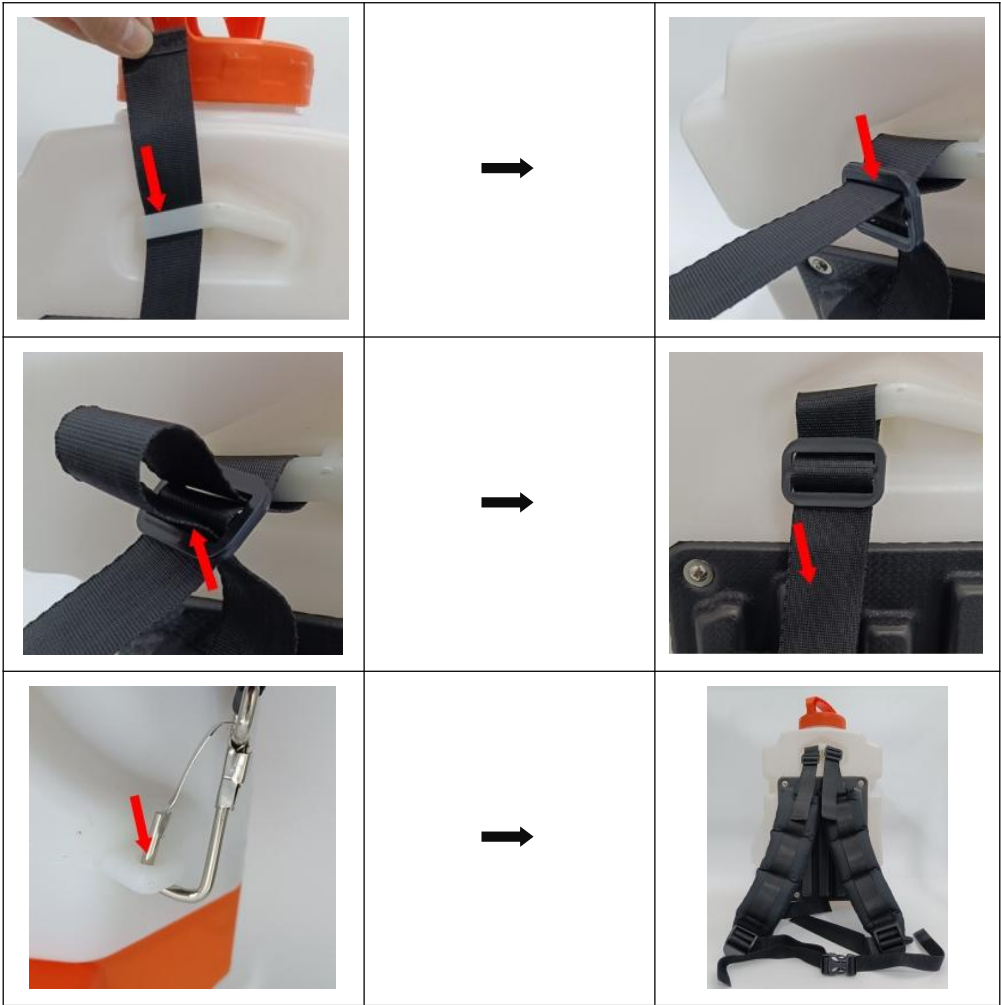


**STEP 02: ASSEMBLE THE BATTERY**



**STEP 03: ASSEMBLE THE STRAP**

1. Insert the belt into the hole of sprayer, insert the belt into the inside of buckle, tighten the belt.

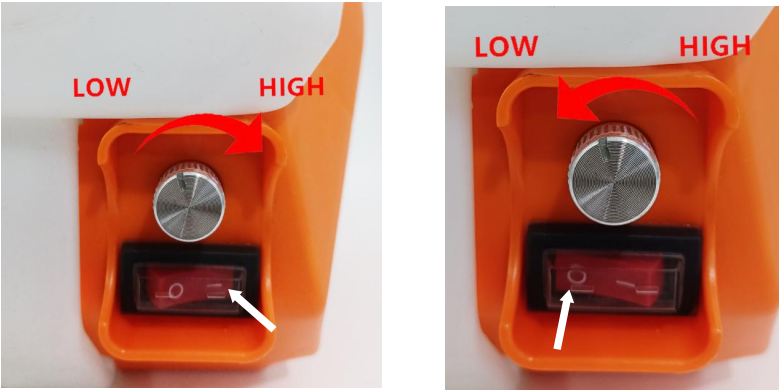


**USAGE**

**01. START TO WORK AND STOP TO WORK**

Turn on the electric switch to “I”, then rotate the knob to “HIGH”, start to work.

Rotate the knob to “LOW” , stop to work, then turn off the electric switch to “0”.

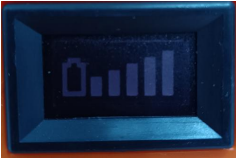




**02. THE USAGE OF HANDLE SWITCH**

Press and hold the handle to start working, or release it to stop working.



**03. JUDGE THE INDICATOR LIGHT OF THE AMMETER**

|  |   |
|--|---|
|   | The light not turning on indicates that it is not working.                        |
|  | A red light means the battery is low and needs to be charged as soon as possible. |
|  | A fully green light indicates a full charge.                                      |

04. CHARGING

1. Open the battery cover and remove the battery. Insert the charger plug into the battery charging socket, then check the charger indicator light. A red light indicates charging, while a green light indicates a full charge.

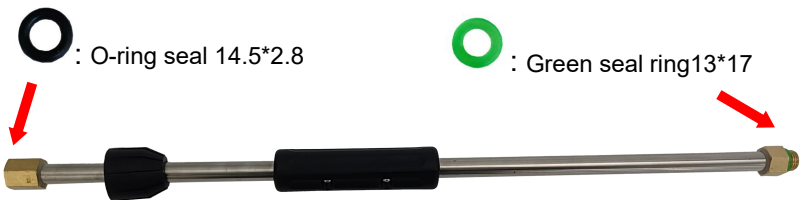


05. CLEANING

Please clean the sprayer with water, and finally turn off the regulator and the electric switch after use.

SEAL POSITION

1)





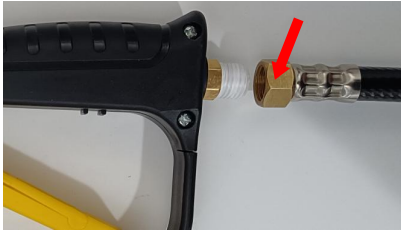
: O-ring seal 14.5\*2.8



: Green seal ring 13\*17



2)






: Green seal ring 12.3\*2.2






3)



: Green seal ring 12.3\*2.2

## INTRODUCTION AND APPLICATION OF NOZZLE

|   |                               |  |
|---|-------------------------------|--|
|  | Fan-shaped nozzle             | Provide fan-shaped spray, which is mostly used in scenes requiring control range, such as weeding.                                     |
|  | Adjustable single-hole nozzle | Rotational control spray. Provide a small amount of spray, or linear spray (15-20ft).  |
|  | Windproof nozzle              | 1. Equipped with a protective cover to reduce the impact of wind on spray.<br>2. Turn the top adjustment spray to suit different uses. |

|   |                           |   |
|---|---------------------------|---|
|   | F-type double nozzle      | Provide medium spray effect.<br>Allows you to cover large areas with medium fine fog.           |
|  | Single-head copper nozzle | Rotational control spray.<br>Provide a small amount of spray, or linear spray (15-20ft).        |
|  | 3 head brass nozzle       | Provides multi-angle spray effect.  |
|  | 3 head nozzle             | Provide a wide range of spray. Allows you to cover large areas.                                 |
|  | Y-type double nozzle      | Provide medium spray effect. It can be used when you want to spray both sides at the same time. |

## MAINTAIN AND STORAGE

### Cleaning and care:

After operating the sprayer, remove the working solution from the tank completely and rinse the tank, hose, pump, and spray tube with clean water. Finally, spray with clean water for 3 minutes to eliminate the possibility of a chemical reaction when other chemicals are used in the next spraying. Residues of chemicals can lead to corrosion and other damage to parts of the sprayer especially spraying nozzles, filters, and seals.

### Storage rules:

- Keep the sprayer in a dry, cool, and out-of-way place for children.
- It is forbidden to store the sprayer near an open fire.
- To prevent damage to the pump and other parts, it must be washed and dried before storing the sprayer in winter. Clean the surface of machines and tools, filter screen, and nozzle, and dry them in the air. Do not put them directly in the sun.
- Before storage, the battery must be fully charged. During the storage period, you need to charge your battery regularly with an adapter (at least once every 2 months).
- Keep the adapter in a dry place.

## TROUBLESHOOTING INSTRUCTION

| Problem  | Reason  | Solution  |
|--|---|---|
| The motor doesn't run.<br>Automatically stop after working.          | <ol style="list-style-type: none"> <li>1. The power connection wire falls off.</li> <li>2. The battery is flat.</li> <li>3. Motor overheating.</li> <li>4. Power switch is broken.</li> </ol>   | <ol style="list-style-type: none"> <li>1. Check the wire connections.</li> <li>2. Charge the battery.</li> <li>3. Start work after the motor is cold.</li> <li>4. Change a switch.</li> </ol>   |
| The nozzle does not spray water.<br>The pressure is not steady.      | <ol style="list-style-type: none"> <li>1. The nozzle is blocked.</li> <li>2. Air in the hose.</li> <li>3. Pump is blocked.</li> <li>4. Hose is leaking.</li> </ol>  | <ol style="list-style-type: none"> <li>1. Clear the nozzle.</li> <li>2. Check the hose to see if it is leaking or not.</li> <li>3. Open the pump, and get the debris out.</li> <li>4. Change a hose.</li> </ol>   |
| Flow rate and  | <ol style="list-style-type: none"> <li>1. Suction plug.</li> <li>2. Power is not enough.</li> </ol>   | <ol style="list-style-type: none"> <li>1. Cleaning the filter</li> <li>2. Change the battery</li> </ol>   |
| Leaking  | <ol style="list-style-type: none"> <li>1. Connecting place is not tight.</li> <li>2. The O-ring is broken.</li> <li>3. The hose is broken.</li> </ol>   | <ol style="list-style-type: none"> <li>1. Tight the connecting.</li> <li>2 Change the o-ring.</li> <li>3. Change the hose.</li> </ol>   |
| Poor spraying.   | <ol style="list-style-type: none"> <li>1. The nozzle has debris.</li> <li>2. The nozzle nut is broken.</li> <li>3. The nozzle flat is installed on the wrong face.</li> <li>4. The strainer is blocked.</li> <li>5. Connecting parts are leaking.</li> <li>6. The power is not enough.</li> </ol> | <ol style="list-style-type: none"> <li>1. Clearing the debris.</li> <li>2. Change the nozzle nut.</li> <li>3. Correct the face for flat.</li> <li>4. Cleaning the strainer.</li> <li>5. Tight the connecting part.</li> <li>6. Charge the battery.</li> </ol> |
| Turn the spraying nozzle off, the motor sometimes on, sometimes off. | <ol style="list-style-type: none"> <li>1. The spraying nozzle has debris.</li> <li>2. Seals not on the position.</li> <li>3. The cover of the pump is leaking.</li> </ol>   | <ol style="list-style-type: none"> <li>1. Clear the debris.</li> <li>2. Tight and put the seals in position.</li> <li>3. Tight the cover.</li> </ol>  |
| Stronger noise for   | <ol style="list-style-type: none"> <li>1. Fitting screw for the pump is loose.</li> </ol>   | <ol style="list-style-type: none"> <li>1. Tight the screw.</li> </ol>   |
| Charging fail.   | <ol style="list-style-type: none"> <li>1. The socket is damp, the surface is oxidation, and the wire is broken.</li> </ol>  | <ol style="list-style-type: none"> <li>1. Change the socket.</li> <li>2. Connect wires again.</li> </ol>  |



**Manufacturer:** Shanghaimuxinmuyeyouxiangongsi

**Address:** Shuangchenglu 803nong11hao1602A-1609shi, baoshanqu, shanghai 200000 CN.

**Imported to AUS:** SIHAO PTY LTD. 1 ROKEVA STREETEASTWOOD NSW 2122 Australia

**Imported to USA:** Sanven Technology Ltd. Suite 250, 9166 Anaheim Place, Rancho Cucamonga, CA 91730

|           |            |
|-----------|------------|
| <b>UK</b> | <b>REP</b> |
|-----------|------------|

YH CONSULTING LIMITED. C/O YH Consulting Limited Office 147, Centurion House, London Road, Staines-upon-Thames, Surrey, TW18 4AX

|           |            |
|-----------|------------|
| <b>EC</b> | <b>REP</b> |
|-----------|------------|

E-CrossStu GmbH  
Mainzer Landstr.69,  
60329 Frankfurt am Main.







**Technical Support and E-Warranty Certificate**  
**[www.vevor.com/support](http://www.vevor.com/support)**