



北通鲲鹏20

游戏手柄用户手册

使用产品前请阅读使用说明书并保留备用

BEITONG KunPeng 20

Gaming Controller User Manual

Please Read User Manual before Using the Product and Save it for Reference



1 基本操作

键位	功能解释
HOME键	短按开机
BACK+B键 (长按3秒)	关机
HOME键 (长按5秒)	进入当前模式档位下的强制配对
短按TURBO键	开/关 握把灯光
TURBO+A/B/X/Y/LB/LT/RT/RB键	连发开启/关闭
RB+BACK+RS+HOME键开机	清除所有配对信息
BACK+START+RS键	进入扳机及摇杆校准模式
Y+X+HOME键开机	进入体感校准模式

自动关机	手柄处于已连接的状态时，当手柄无按键动作10分钟，未在助手修改休眠时间，则自动关机
失联休眠	手柄处于未连接的状态时，当手柄无按键动作2分钟，则自动关机
更换配对设备	长按HOME键5秒，手柄即进入当前模式档位下的强制配对，重新配对设备即可
摇杆/扳机校准	连接状态下，同时按【BACK+START+RS】进入扳机及摇杆校准，LOGO灯以红/绿/蓝三色交替闪烁，左右摇杆正常转动打满3圈，扳机按到底3次，同时按【BACK+START+RS】键完成校准，完成校准后手柄自动连接原设备
体感校准	关机状态下，同时按【Y+X+HOME】开机进入体感校准，LOGO灯黄色常亮，表示进入校准模式，手柄放置桌面静置5秒，红灯快闪两次表示校准成功

1 Basic Control

BUTTON	FUNCTION
HOME BUTTON	SHORT PRESS TO POWER ON
BACK+B (LONG PRESS FOR 3S)	POWER OFF
HOME BUTTON (LONG PRESS FOR 5S)	FORCE PAIRING IN CURRENT MODE
SHORT PRESS TURBO BUTTON	TURN HANDLE LIGHT ON/OFF
TURBO+A/B/X/Y/LB/LT/RT/RB	TURN TURBO ON/OFF
POWER ON WITH RB+BACK+RS+HOME	CLEAR ALL PAIRING DATA
BACK+START+RS	CALIBRATION MODE FOR TRIGGERS AND STICKS
POWER ON WITH Y+X+HOME	CALIBRATION MODE FOR MOTION SENSORS

AUTO POWER OFF	Power off after 10 minutes (adjustable) of no inputs while connected.
AUTO POWER OFF (DC)	Power off after being disconnected with no user inputs for 2 minutes.
SWITCH PAIRED DEVICE	Long press HOME button for 5s will force the gamepad to reset the pairing in the current mode.
CALIBRATE STICKS TRIGGERS	While connected, press BACK+START+RS to enter the calibration mode. Once entered, the logo light will flash in a red-green-blue sequence. Rotate left and right sticks in full 360 degrees for 3 times, fully press down triggers for 3 times, then press BACK+START+RS again to finish the calibration. The gamepad will auto-reconnect after the calibration.
CALIBRATE MOTION SENSORS	While powered off, press Y+X+HOME to enter the calibration mode. Once entered, the logo light will stay yellow. Then put the gamepad on a flat surface for 5 seconds. Two flashes of red light indicate that the calibration is successful.

2 连接电脑

无线接收器连接

使用无线接收器连接模式时 需保证手柄未使用数据线跟电脑连接



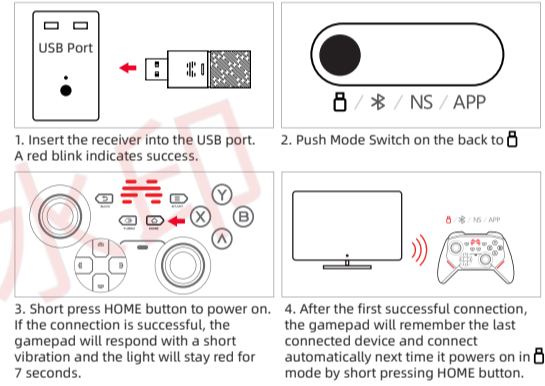
有线连接



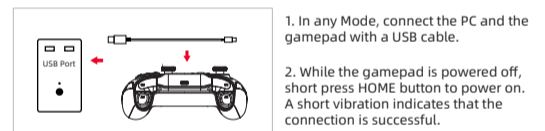
2 PC

Wireless Connection

Wireless only enables while the gamepad is NOT connected through a cable.



Wired Connection



蓝牙连接



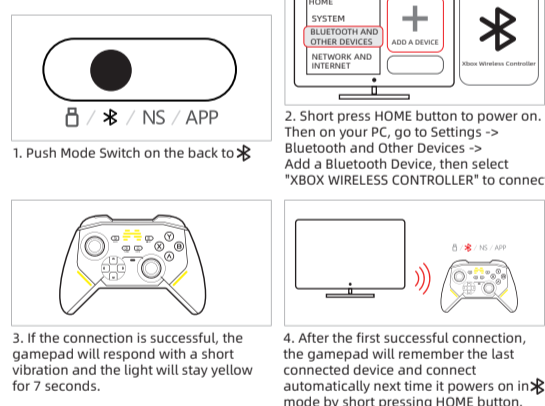
3 连接SWITCH



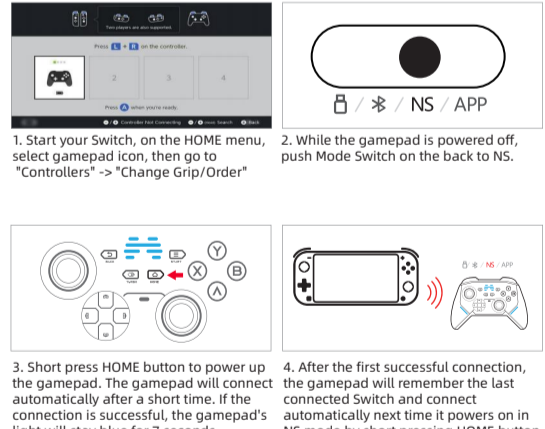
SWITCH键位对应图

键位	A	B	X	Y	BACK	START	TURBO+RS	长按TURBO+RS	HOME	TURBO
SWITCH对应键位	B	A	Y	X	-	+	截图	屏屏	HOME	TURBO

Bluetooth Connection



3 Switch



Switch Mapping Example

BUTTON	A	B	X	Y	BACK	START	SHORT PRESS TURBO+RS	LONG PRESS TURBO+RS	HOME	TURBO
SWITCH BUTTON	B	A	Y	X	-	+	SCREENSHOT	RECORD	HOME	TURBO

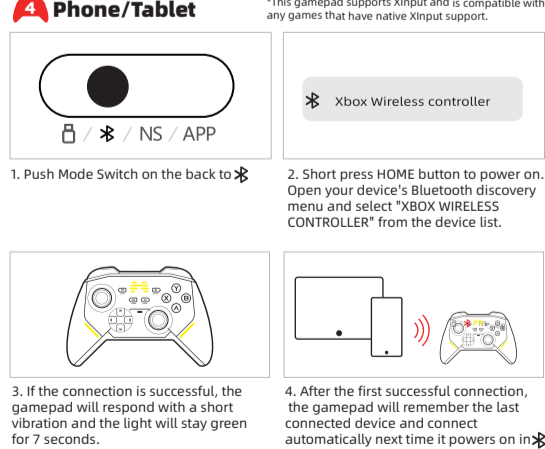
4 连接手机/平板设备

注：手柄支持XINPUT协议模式可玩支持XINPUT协议的原生游戏



4 Phone/Tablet

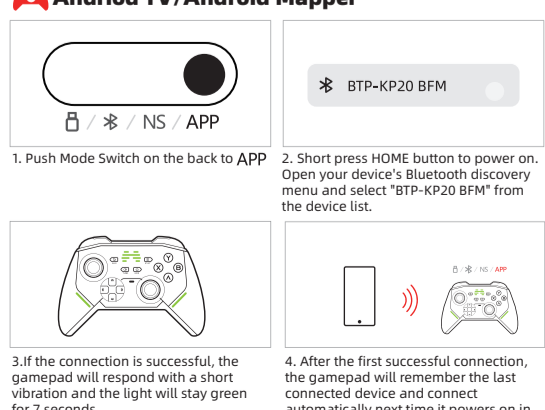
*This gamepad supports Xinput and is compatible with any games that have native Xinput support.



5 安卓电视及安卓映射











5 Andriod TV/Android Mapper



6 WIRELESS/BLUETOOTH MODE SWITCH

This gamepad can switch among 4 wireless modes: Receiver, Xinput Bluetooth, Switch Bluetooth, and BFM Bluetooth. You may force pairing in current mode by long pressing HOME button for 5 seconds. The gamepad will attempt reconnecting to its previous connected device on each mode on mode switch.

Switch	Mode	Light	Reconnect	Force Pairing	SUCCESSFUL CONNECTION
	Receiver Mode		Normal Red Flash	Fast Red Flash	Light stays red for 7 seconds then changes to user-defined light
	Xinput Mode		Normal Yellow Flash	Fast Yellow Flash	Light stays Yellow for 7 seconds then changes to user-defined light
	switch Mode		Normal Blue Flash	Fast Blue Flash	Light stays Blue for 7 seconds then changes to user-defined light
	bfm Mode		Normal Green Flash	Fast Green Flash	Light stays Green for 7 seconds then changes to user-defined light

7 CHARGING GUIDE

BATTERY STATUS	LIGHT INDICATION
Less than 20%	Fast flashing user-defined light
Charging	User-defined light fades in and out
Charging complete	When powered off: user-defined light stays on for 7 seconds then off When powered on: changes to user-defined light
* By default, charging light is red. The light's color can be customized in BEITONG gamepad assistant.	

8 MORE SMART CUSTOMIZATION THROUGH BEITONG GAMEPAD ASSISTANT

Go to BEITONG official website www.betop-cn.com/en and download BEITONG Gamepad Assistant for more customization options.

1、STICK ADJUSTMENT. ADJUST SENSITIVITY ACCORDINGLY BASED ON GAME GENRES.



2、CUSTOMIZABLE LIGHT



3、CUSTOM MAPPING & MACROS



9 FAQ

Q MY GAMEPAD IS NOT CONNECTING WIRELESSLY.

- A Usually it's caused by jammed signals or insufficient battery. Please try the followings:
1. Make sure that the gamepad is sufficiently charged. Try reconnecting after charging it for more than 1 hour.
 2. Try a different USB port on the same device. A USB 3.0 port is recommended.
 3. If nothing works, please contact our online technical support. Support Email: beitong-oversea@betop-cn.com

Q WHAT KIND OF CHARGER SHOULD I USE?

- A The standard charger is 5V 1A-2A.

Q HOW DO I UPGRADE FIRMWARE?

- A Please install BEITONG Gamepad Assistant and follow the instructions provided by the software.

Q THE ANALOG STICK IS STUCK IN A DIRECTION / DOES NOT CENTER PROPERLY?

- A
- 1) Try forcing it back to the center and pressing down the stick slightly harder, which should re-center itself.
 - 2) If 1) did not help, please contact customer support through beitong-oversea@betop-cn.com

10 PRODUCT SPECS

PRODUCT NAME	BEITONG KunPeng 20 Intelligent Gaming Controller
PRODUCT MODEL	BTP-KP20
PRODUCT DIMENSIONS	156x107x67mm
PRODUCT WEIGHT	≈235g
COMPATIBILITY	PC, Nintendo® Switch, Smartphone, Android TV, Smart Projectors, etc. TV/TV Boxes that support Android 9.0 and above. PC/Laptops that support Windows 7 and above. Android phones that support Android 9.0 and above, iPhones that support iOS 13.4 and above.
CONNECTION CAPABILITY	Wired, Wireless, Bluetooth
BATTERY CAPACITY	600mAh
RANGE	Wired: 1.5 meters, Wireless: less than 10 meters

FC

This device complies with part 15 of the FCC Rules. Operation is subject to the following two conditions: (1) This device may not cause harmful interference, and (2) this device must accept any interference received, including interference that may cause undesired operation.


Note:

This equipment has been tested and found to comply with the limits for a Class C digital device, pursuant to part 15 of the FCC Rules. These limits are designed to provide reasonable protection against harmful interference in a residential installation. This equipment generates, uses and can radiate radio frequency energy and, if not installed and used in accordance with the instructions, may cause harmful interference to radio communications. However, there is no guarantee that interference will not occur in a particular installation. If this equipment does cause harmful interference to radio or television reception, which can be determined by turning the equipment off and on, the user is encouraged to try to correct the interference by one or more of the following measures:

- Reorient or relocate the receiving antenna.
- Increase the separation between the equipment and receiver.
- Connect the equipment into an outlet on a circuit different from that to which the receiver is connected.
- Consult the dealer or an experienced radio/TV technician for help.

CE

This equipment has been tested against the listed standards and found to comply with the requirements of EMC Directive 2014/30/EU, LVD Directive 2014/35/EU, and RF Directive 2014/53/EU. The CE marking can be used to certify that a product complies with European Union (EU) health, safety, and environmental requirements.

 This product, its battery, or the packaging may bear this symbol, indicating that this product and any contained batteries must not be disposed of with your household waste. Instead, you are responsible for handing them over to applicable collection points for the recycling of batteries and electrical electronic equipment. This separate collection and recycling will help protect natural resources and prevent potential negative consequences for human health and the environment due to harmful substances that may be present in batteries and electrical electronic devices, which could arise from improper disposal. For more information on where to dispose of batteries and electronic waste, please contact your local city/municipal office, your household waste disposal service, or the store where you purchased this product. For more information about the disposal of electrical electronic equipment and waste batteries, please contact beitong-oversea@betop-cn.com.

Customer Service

Dear Customer,

Thank you for choosing BEITONG gaming peripheral product. We aim to provide every gamer a better gaming experience. To submit a warranty claim, please include the following information in your email:

a. Vendor Information b. Buyer ID c. Order Number d. Product Model

Please describe the problems you're having and how we can be of assistance:

1. What problems are you having?

a. Faulty control b. Exterior damage c. Incompatible with my device d. Incompatible with my game e. Others

2. How would you like to proceed?

a. Replace b. Repair c. Return d. Others

Support Email: beitong-oversea@betop-cn.com

Your feedback is highly appreciated and will help us to improve our product. Please tell us your thoughts on our product through our support email. Customers who provided valuable feedback may be eligible for free tech demos from us in the future.

Sincerely,

BEITONG Customer Service Team

Warning: Changes or modifications to this unit not expressly approved by the party responsible for compliance could void the user's authority to operate the equipment.

NOTE: This device complies with part 15 of the FCC Rules. Operation is subject to the following two conditions: (1) This device may not cause harmful interference, and (2) this device must accept any interference received, including interference that may cause undesired operation.

FCC Statement:

This equipment has been tested and found to comply with the limits for a Class B digital device, pursuant to part 15 of the FCC Rules. These limits are designed to provide reasonable protection against harmful interference in a residential installation. This equipment generates, uses and can radiate radio frequency energy and, if not installed and used in accordance with the instructions, may cause harmful interference to radio communications. However, there is no guarantee that interference will not occur in a particular installation. If this equipment does cause harmful interference to radio or television reception, which can be determined by turning the equipment off and on, the user is encouraged to try to correct the interference by one or more of the following measures:

- Reorient or relocate the receiving antenna.
- Increase the separation between the equipment and receiver.
- Connect the equipment into an outlet on a circuit different from that to which the receiver is connected.
- Consult the dealer or an experienced radio/TV technician for help.

RF exposure compliance statement:

This device has been evaluated to meet the general RF exposure requirement

6 无线/蓝牙模式切换

本手柄共有 接收器、XINPUT蓝牙、SWITCH蓝牙、BFM蓝牙 四种无线模式进行切换 可长按HOME键5秒进入当前模式档位下的强制配对状态。 通过切换对应模式档位，进入该模式的回连连接状态。

模式档位	模式	指示灯	回连连接	强制连接	连接成功
	接收器模式		红灯中闪	红灯快闪	手柄氛围灯红灯常亮7秒后进入自定义灯效
	XINPUT模式		黄灯中闪	黄灯快闪	手柄氛围灯黄灯常亮7秒后进入自定义灯效
	SWITCH模式		蓝灯中闪	蓝灯快闪	手柄氛围灯蓝灯常亮7秒后进入自定义灯效
	BFM模式		绿灯中闪	绿灯快闪	手柄氛围灯绿灯常亮7秒后进入自定义灯效

7 充电说明

电量状态	指示灯效提示
电量不足20%	自定义灯效快闪
充电中	自定义灯效呼吸
充电完成	关机充电完成: 自定义灯效常亮7秒后熄灭 开机充电完成: 进入自定义灯效
注: 出厂默认设置充电电为红色指示灯，用户可使用北通手柄助手自定义灯光颜色	

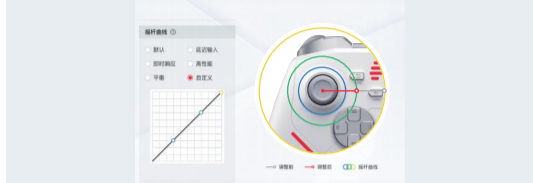
8 北通游戏厅 更多智控设置

访问北通官网 www.betop-cn.com 下载【北通游戏厅】，自由探索多样玩法

1、我的手柄天赋 快速熟悉手柄操作，最大程度发挥你的手柄天赋



2、摇杆调节 可根据游戏类型调节灵敏度至理想参数



3、自定义灯光调节 17种炫酷灯光可选，可调节呼吸/常亮模式



4、按键映射、宏定义 可根据游戏场景自由设置按键映射、宏定义



9 常见问题

Q 为什么手柄无法连接接收器、蓝牙设备？

- A 一般是手柄接收器信号受到干扰，或者手柄没电解决方法：
1. 确保手柄是否有足够的电量，或者充电1小时后再重新尝试连接
 2. 尝试将手柄接收器插入同一设备上的其他USB口再进行测试，USB口以3.0为佳
 3. 如以上方法操作无效，可以联系官方在线客服咨询 官方客服QQ:4006754300

Q 手柄充电要用什么充电器？

- A 使用标准是5V，1-2A充电器

Q 如何对手柄固件进行升级？

- A 在电脑上安装北通游戏厅，根据软件内指导进行固件升级

Q 摇杆在某个方向上卡住，不回弹，怎么处理？

- A
- 1、请将摇杆先回正，稍用力垂直往下按压，即可恢复
 - 2、如以上方法操作无效，可以联系官方在线客服咨询 官方客服QQ:4006754300

10 产品规格

产品名称	北通鲲鹏20智控游戏手柄
产品型号	BTP-KP20
产品尺寸	156x107x67mm
产品重量	≈235g
平台适配	电脑、NS主机、手机、Android电视、投影仪等 电视/电视盒子支持Android 9.0以上系统、电脑支持win7以上系统的台式电脑、笔记本、手机支持安卓9.0以上系统、iOS13.4及以上版本支持原生游戏
连接模式	有线、无线、蓝牙
电池容量	600mAh
使用距离	有线1.5米 / 无线小于10米

11 有害物质标识说明

为满足中国电子产品有害物质限制相关的法律和其它要求，对本产品中有有害物质，按部件分类声明如下：

部件名称	有害物质					
	铅 (Pb)	汞 (Hg)	镉 (Cd)	六价铬 (Cr(VI))	多溴联苯 (PBBs)	多溴二苯醚 (PBDEs)
印刷电路板组件	X	O	O	O	O	O
外壳及附件	O	O	O	O	O	O

本表格依据SI/T11364的规定编制。

O：表示该有毒有害物质在该部件所有均质材料中的含量均在GB/T26572规定的限量要求以下

X：表示该有毒有害物质至少在该部件的某一均质材料中的含量超出GB/T26572规定的限量要求

表中标记“X”的部件，皆因全球技术发展水平限制而无法实现有害物质替代。印刷电路板组件：包括印刷电路板及其零部件，电子元器件等，根据产品类型号不同，您所购买的产品可能不会含有以上所有部件。

 在中华人民共和国境内销售的电子电气产品必须标示此标志，标志内的数字代表在正常的使用状态下的产品环保使用期限。

产品保修条例说明

1.产品保修卡

尊敬的顾客：

您好！申请售后时，请根据您的实际情况填写产品保修卡。并把需要处理的产品与产品保修卡一同寄回到您所购买的商家处。感谢您的配合！

请勾选您所需的售后选项：

- ☐ 换新 ☐ 维修 ☐ 退货

请填写一下资料（以下均为必填）

产品名称：北通鲲鹏20智控游戏手柄

订单编号：_____

购买日期：_____

用户姓名：_____

2.产品售后政策

感谢您对“北通”产品的信任与支持，为了更好地保障您的权益，我们为您提供自

购买之日起12个自然月的质保期

如果是非本公司可控原因导致产品无法正常使用，本司不退还换货及维修责任 不属于服务之范围：

- ①已超出有效服务周期
- ②使用者人为损坏的
- ③人为拆卸产品、重装或置换过内部配件等情况
- ④产品背贴被撕毁、刮花、涂改等情况

