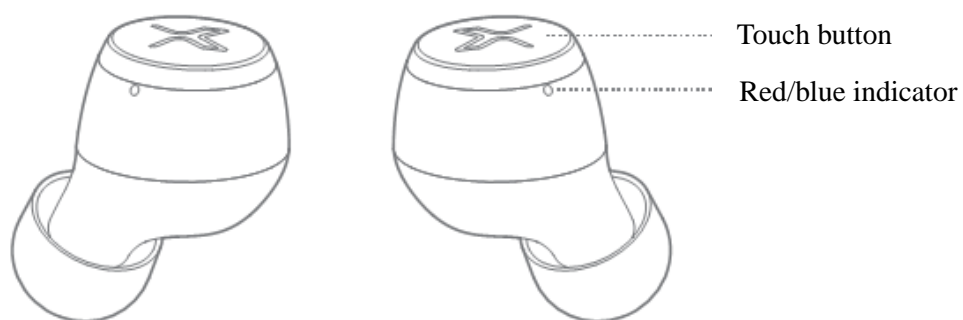




X3s
True Wireless Stereo Earbuds

**For user safety and compliances, also for the optimum performance,
please carefully read safety instructions and use the product in accordance with them.**

■ Product description and accessories



Charging case



Type-C charging cable

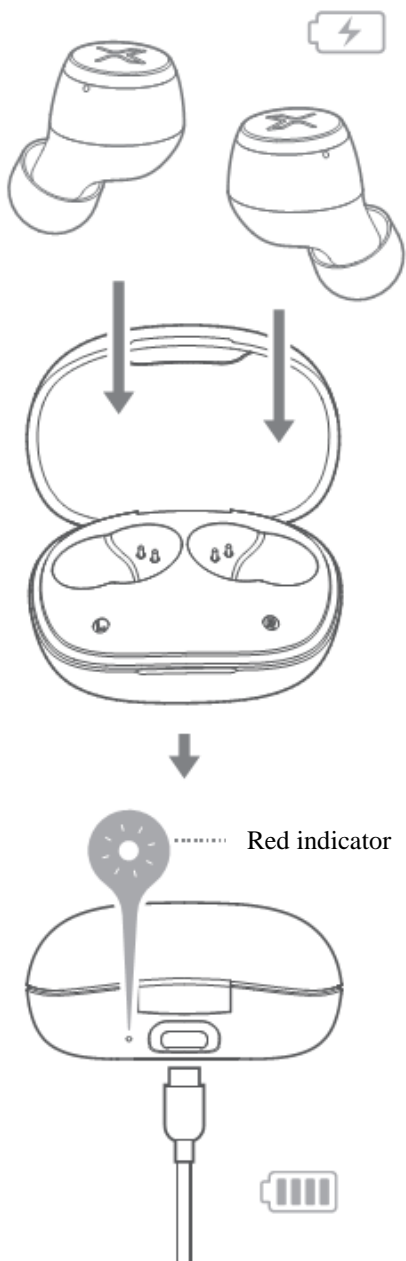


Ear tips

Note:

- There are different size of ear tips attached in the package, please select the suitable ones to wear.
- Images are for illustrative purposes only and may differ from the actual product.

■ Operating instructions



1. Charge

● Charge the earbuds

- You may hear a warning tone with the red light flashing when the earbuds are at low battery level, please place the earbuds in the charging case for charging.
- Red light of the earbuds steady lit = charging
Red light of the earbuds off = fully charged

● Charge the charging case

- Please connect the charging case to power source with the included Type-C charging cable for charging.
- Red light on the case steady lit = charging
Red light on the case off = fully charged

Input: 5V $\overline{=}$ 200mA (earbuds)

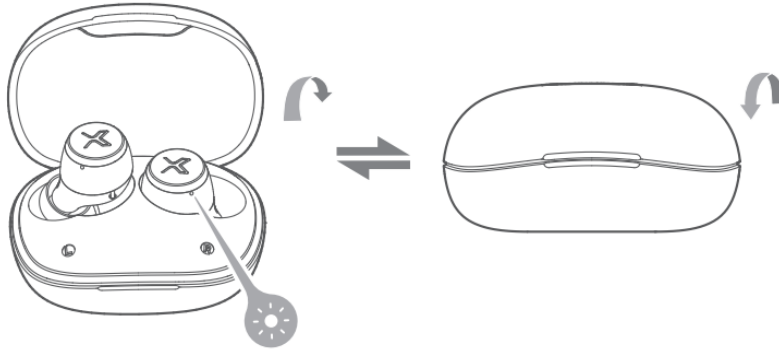
5V $\overline{=}$ 1A (charging case)

Warning:

- The rechargeable batteries that provide power for this product must be disposed properly for recycling. Do not dispose of batteries in fire to prevent an explosion.
- The power source used must be approved by relative departments and in accordance with electronic specifications of devices as well as local regulatory requirements (e.g. UL, CSA, VDE, CCC), otherwise there may be dangers of fire, explosion, etc.

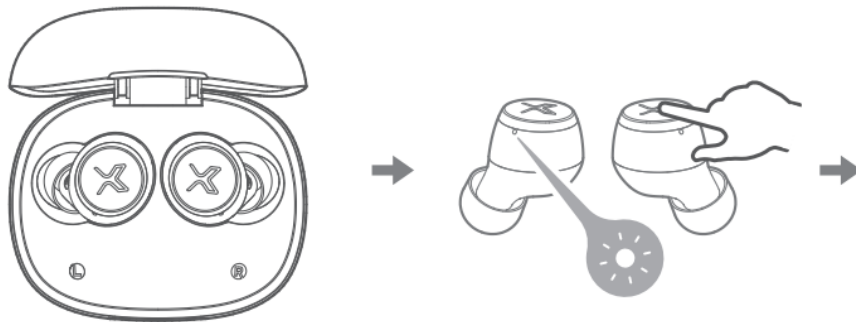
2. Power on/off

- The earbuds will power on when taken out of the case.
- The earbuds will power off when placed in the case.

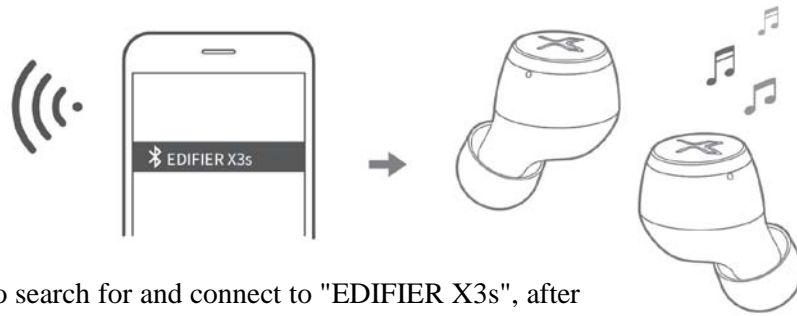


The blue light is steady lit for 1 second.

3. Bluetooth connection



- For initial use, the earbuds will auto-enter Bluetooth pairing mode when taken out of the charging case;
- Bluetooth pairing mode: red and blue lights flash rapidly
- Connect to other mobile phone: Please take out the earbuds, and press and hold the touch button of the left or right earbud for around 2-3 seconds to enter Bluetooth pairing mode.



Set mobile phone to search for and connect to "EDIFIER X3s", after pairing is successful, the blue light will flash slowly.

4. TWS connection of the left and right earbuds

The left and right earbuds have finished TWS pairing before leaving factory. If the wireless connection fails to resume, please follow the steps below to re-pair:

- When the earbuds are in the charging case, respectively and quickly triple click the touch buttons of the left and right earbuds until the blue lights flash rapidly, then the earbuds enter the TWS pairing mode of the left and right earbuds;
- After pairing is done, the red lights on the left and right earbuds will be steady lit.



5. Clear pairing records

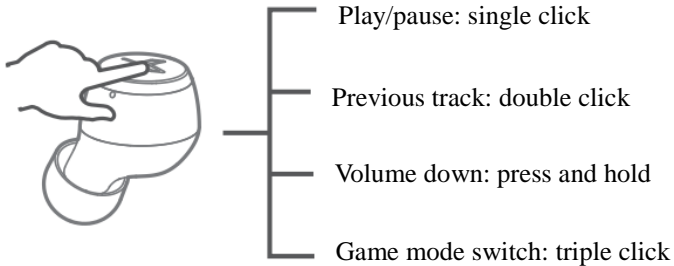
When the left and right earbuds are interconnected and not connected to any Bluetooth devices, please take out the earbuds, and quickly triple click the touch button of the left or right earbud until the blue light flashes rapidly, then the pairing records of both earbuds will be cleared.



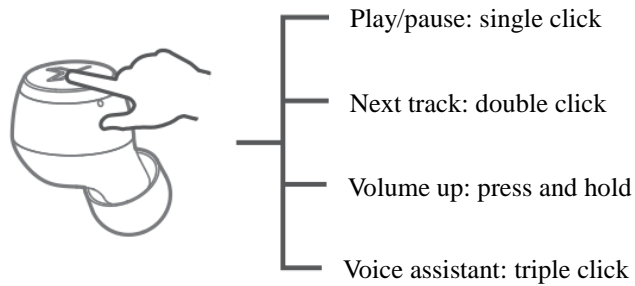
6. Functional operation

Music playback mode (Bluetooth already connected and you are not in a conversation)

L Left earbud

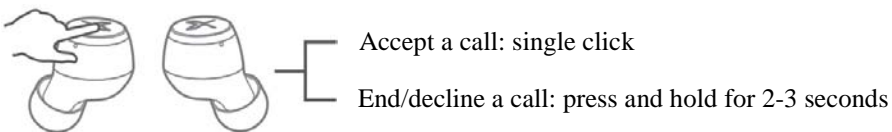


R Right earbud



Call mode (Bluetooth already connected, and there is an incoming call or you are in a conversation)

L/R Left/right earbud



■ FAQs

When charging the charging case, the indicator is off.

- Please ensure the charging case is correctly connected with power source.

No sound

- Check if the earbuds are operating.
- Check if the earbuds volume are at an appropriate level.
- Check if the earbuds are correctly connected with mobile phone.
- Check if the earbuds are operating within a normal working range.

The call quality of the earbuds are not good.

- Check if mobile phone is in an area with strong signal.
- Please ensure the earbuds are within effective distance (10m) and no obstacle between the earbuds and mobile phone.

When playing music, cannot control pause/play/previous track/next track via the earbuds.

- Please ensure the paired device support AVRCP (Audio/Video Remote Control Profile) profile.

■ Maintenance

- If it is not used for long periods of time, please charge the product with lithium battery every three months.
- Keep the product away from humid places to avoid affecting internal circuit. Do not use the product during intense exercise or with much sweat to prevent sweat from dropping into the product to make damage.
- Do not put the product in places exposed to sun or with high temperature. High temperature will shorten service life of electronic components, damage battery and make plastic components deformed.
- Do not put the product in cold places to avoid damaging internal circuit board.
- Do not dismantle the product. Non-professional personnel may damage the product.
- Do not drop, strongly vibrate, strike the product with hard object to avoid damaging internal circuit.
- Do not use drastic chemicals or cleaner to clean the product.
- Do not use sharp objects to scratch product surface to avoid damaging shell and affecting facade.

FCC statement:

This device complies with Part 15 of the FCC Rules. Operation is subject to the following two conditions:

(1) this device may not cause harmful interference, and (2) this device must accept any interference received, including interference that may cause undesired operation.

IC statement: CAN ICES-3(B)/NMB-3(B).

FCC ID: Z9G-EDF150

IC: 10004A-EDF150



210-161783

Declaration for EU

Frequency Band: 2.402GHz ~ 2.480GHz

RF Power Output: ≤ 20 dBm (EIRP)

There is no restriction of use.

FCC Regulatory Compliance

Warning: changes or modifications not expressly approved by the party responsible for compliance could void the user's authority to operate the equipment.

Note: This equipment has been tested and found to comply with the limits for a Class B digital device, pursuant to Part 15 of the FCC Rules. These limits are designed to provide reasonable protection against harmful interference in a residential installation. This equipment generates, uses and can radiate radio frequency energy and, if not installed and used in accordance with the instructions, may cause harmful interference to radio communications. However, there is no guarantee that interference will not occur in a particular installation.

If this equipment does cause harmful interference to radio or television reception, which can be determined by turning the equipment off and on, the user is encouraged to try to correct the interference by one or more of the following measures:

- Reorient or relocate the receiving antenna.
- Increase the separation between the equipment and receiver.
- Connect the equipment into an outlet on a circuit different from that to which the receiver is connected.
- Consult the dealer or an experienced radio/TV technician for help.

RF Exposure Compliance

This equipment complies with FCC radiation exposure limits set forth for an uncontrolled environment.

ISED Regulatory compliance

This device contains licence-exempt transmitters that comply with Innovation, Science and Economic Development Canada's licence-exempt RSS(s).

Operation is subject to the following two conditions:

This device may not cause interference.

This device must accept any interference, including interference that may cause undesired operation of the device.

L'émetteur exempt de licence contenu dans le présent appareil est conforme aux CNR d'Innovation, Sciences et Développement économique Canada applicables aux appareils radio exempts de licence. L'exploitation est autorisée aux deux conditions suivantes :

L'appareil ne doit pas produire de brouillage;

L'appareil doit accepter tout brouillage radioélectrique subi, même si le brouillage est susceptible d'en compromettre le fonctionnement.

This equipment complies with IC RSS-102 radiation exposure limits set forth for an uncontrolled environment.

Cet équipement est conforme aux limites d'exposition aux radiations IC CNR-102 établies pour un environnement non contrôlé.

Model: EDF200060

Edifier International Limited

P.O. Box 6264

General Post Office

Hong Kong

www.edifier.com

© 2021 Edifier International Limited. All rights reserved.

Printed in China

NOTICE:

For the need of technical improvement and system upgrade, information contained herein may be subject to change from time to time without prior notice.

Products of EDIFIER will be customized for different applications. Pictures and illustrations shown on this manual may be slightly different from actual product. If any difference is found, the actual product prevails.