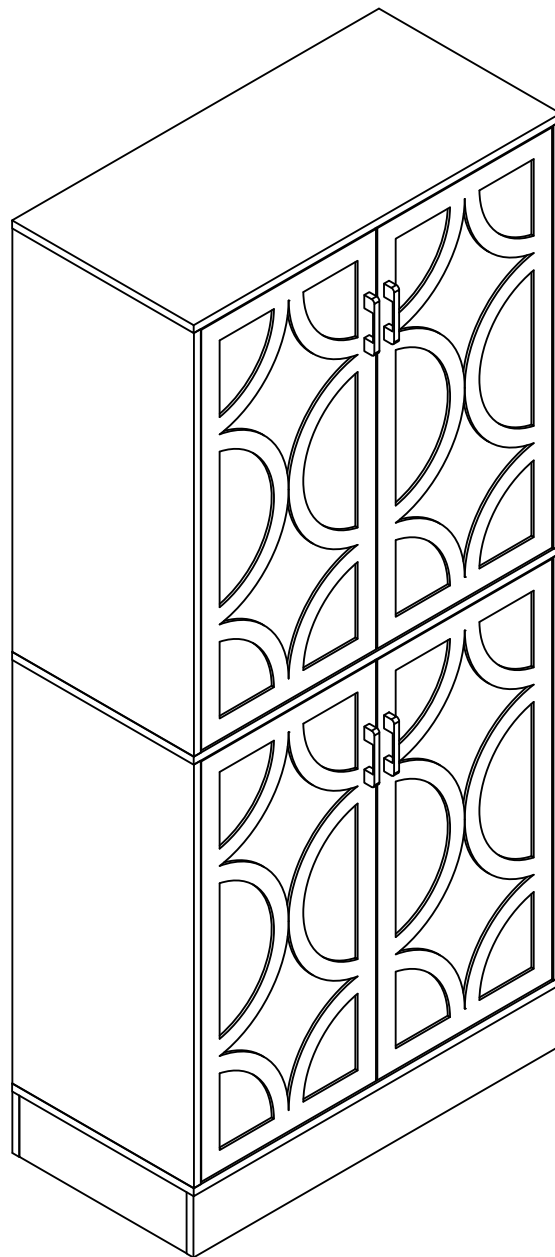




DESIGNED FOR LIFE

Assembly Instructions



Locker

Model No.
HOGA-F2228



www.tribesign.com



Contact Us

We're here to help you.



Your satisfaction is our top priority. If you encounter any issues with this product, such as missing or damaged parts, we're here to help. Please retain the original packaging and take photos of the packaging and the product, then contact us as soon as possible.


Warm Tips

1. Carefully read these instructions and keep them for future reference.
2. Check the parts list and confirm everything's there before starting assembly.
3. When assembling, put all parts on a soft, smooth surface like a carpet to avoid scratches.
4. Don't fully tighten screws until all parts are confirmed in place to avoid misalignment.

How to Get the Assembly Video


Step 1

Scan the QR code.

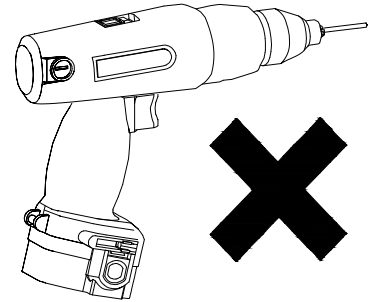
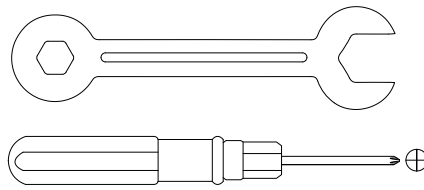
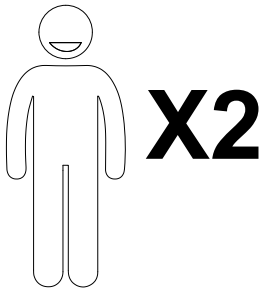

Installation Video

Step2

Search with the Model No.
(on the bottom left corner of the title page)

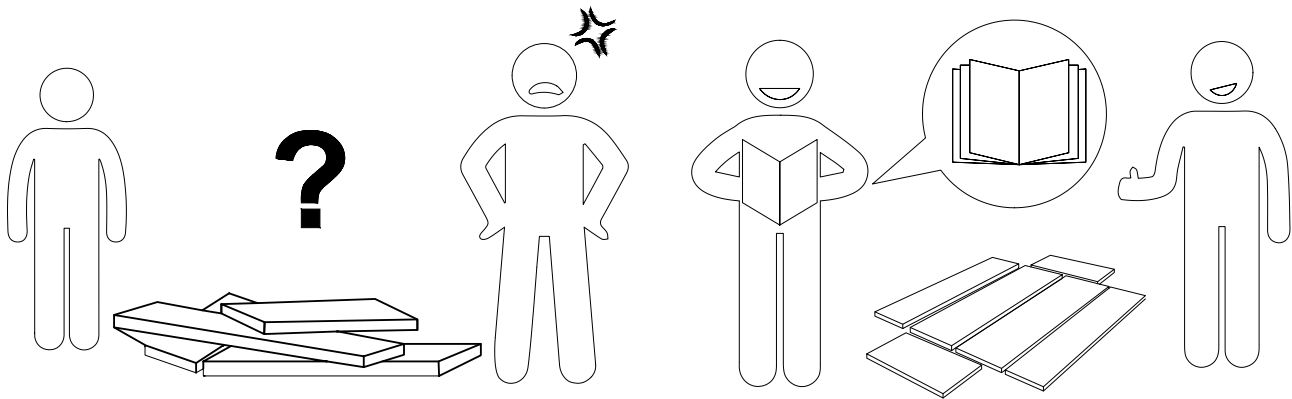

HOGA-F2228

Note: If you can't find the assembly video, please contact us.



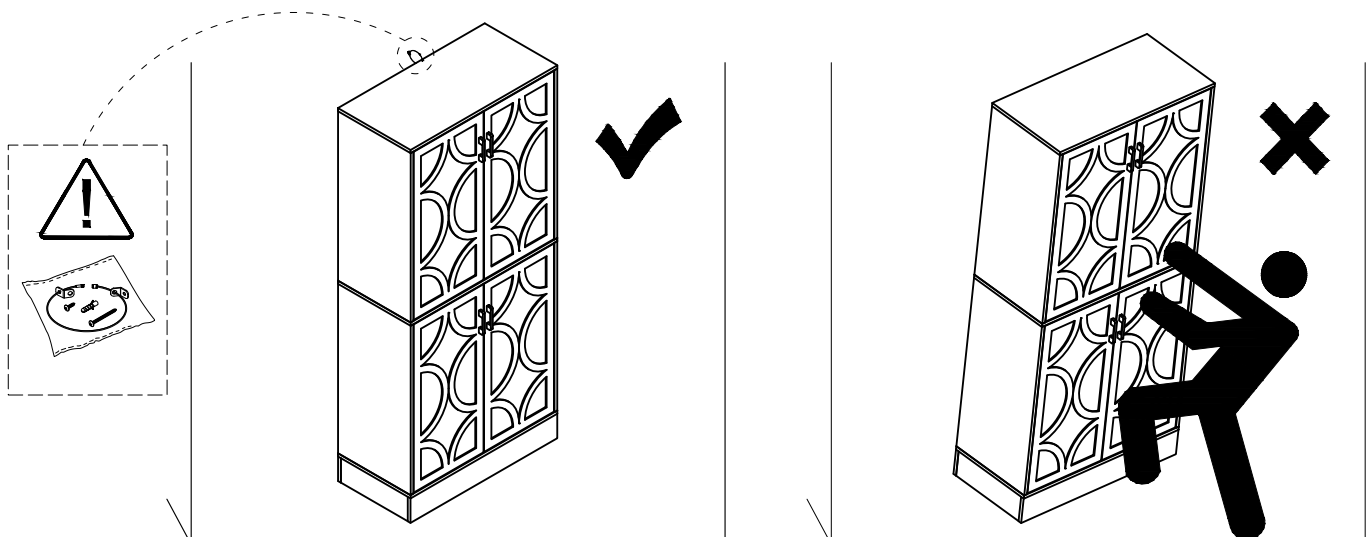
We recommend using hand tools for assembly.

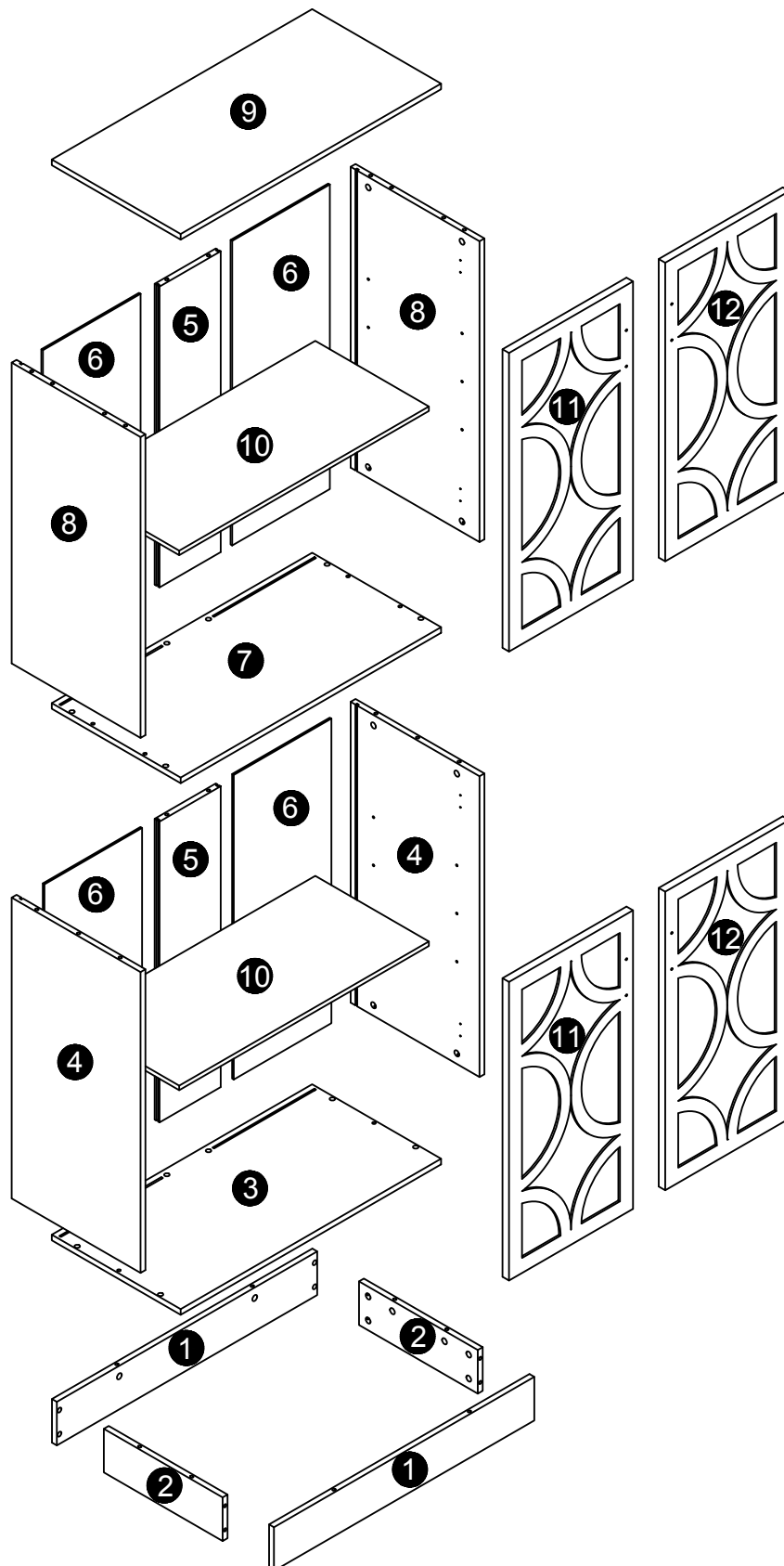
If an electric screwdriver is used, reduce power and torque to avoid damage to the product.



Install the Anti-Tip Straps

Using the anti-tip straps can reduce the risk of tipping over, but can not eliminate it.



**⚠ Caution**

Make sure all parts are included. Most board parts are labeled or stamped on the raw edge. Contact us for a free replacement if you encounter any damaged or missing parts.

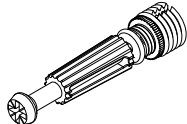
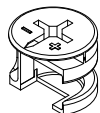
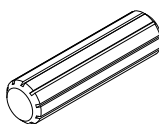
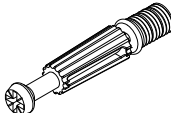




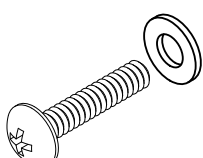
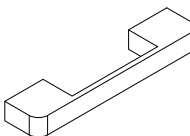
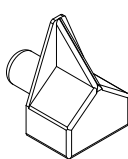
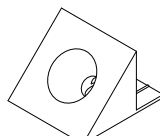
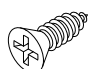
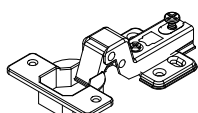
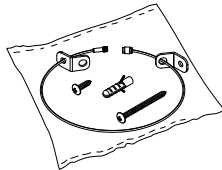
Parts List


<div>1</div> <div></div> <div>2 pcs</div>	<div>2</div> <div></div> <div>2 pcs</div>	<div>3</div> <div></div> <div>1 pc</div>	<div>4</div> <div></div> <div>2 pcs</div>	<div>5</div> <div></div> <div>2 pcs</div>
<div>6</div> <div></div> <div>4 pcs</div>	<div>7</div> <div></div> <div>1 pc</div>	<div>8</div> <div></div> <div>2 pcs</div>	<div>9</div> <div></div> <div>1 pc</div>	<div>10</div> <div></div> <div>2 pcs</div>
<div>11</div> <div></div> <div>2 pcs</div>	<div>12</div> <div></div> <div>2 pcs</div>			



Hardware List

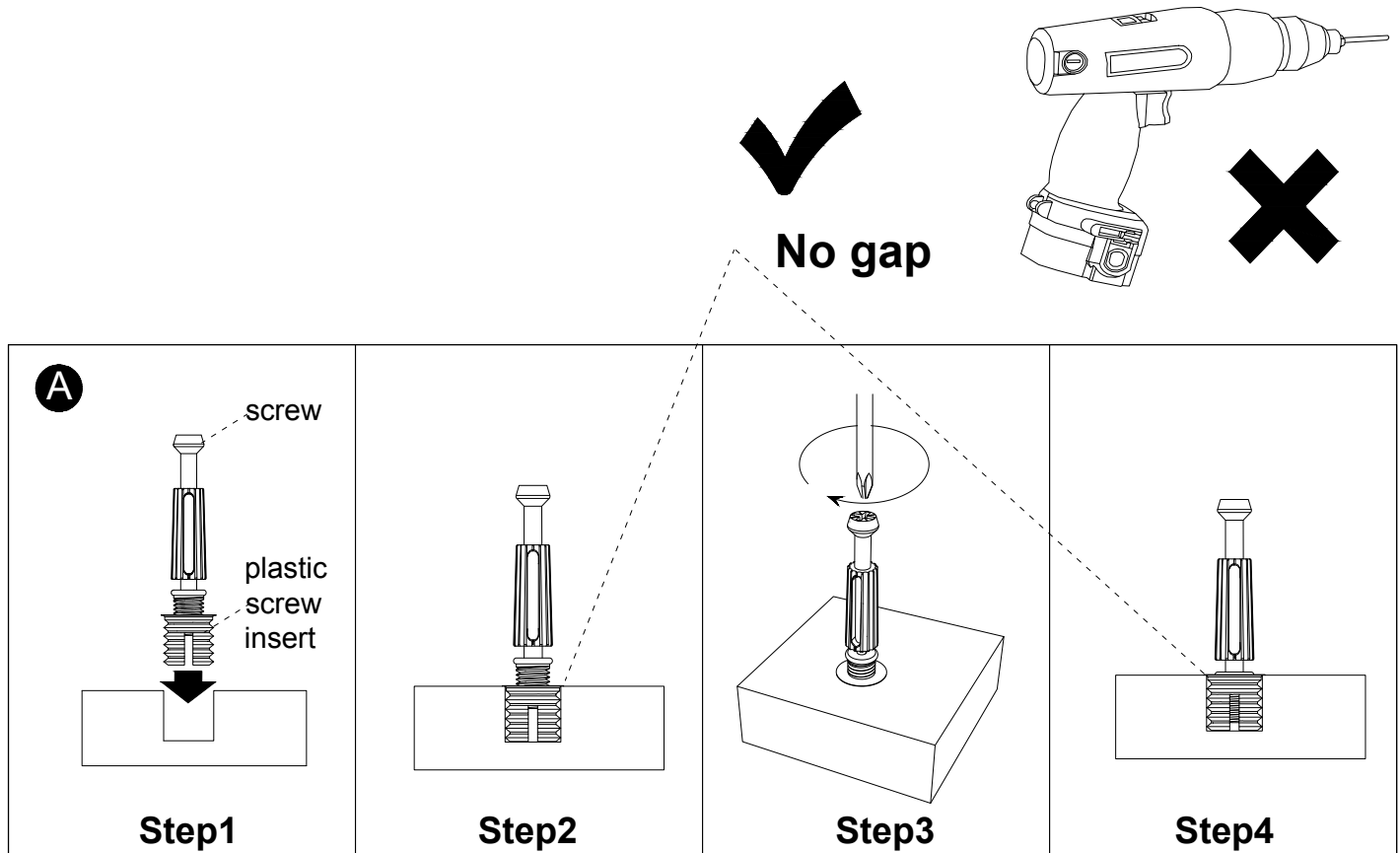
A	B	C	D	E	F
					
M6x35mm	Ø15x12mm	Ø8x30mm	M6x35mm	Ø3.5x14mm	
36 pcs	40 pcs	12 pcs	4 pcs	8 pcs	8 pcs

G	H	I	J	K	L
				 E X6 Ø3.5x14mm 	
Ø4x25mm	96mm				
8 pcs	4 pcs	8 pcs	8 pcs	8 pcs	1 pc

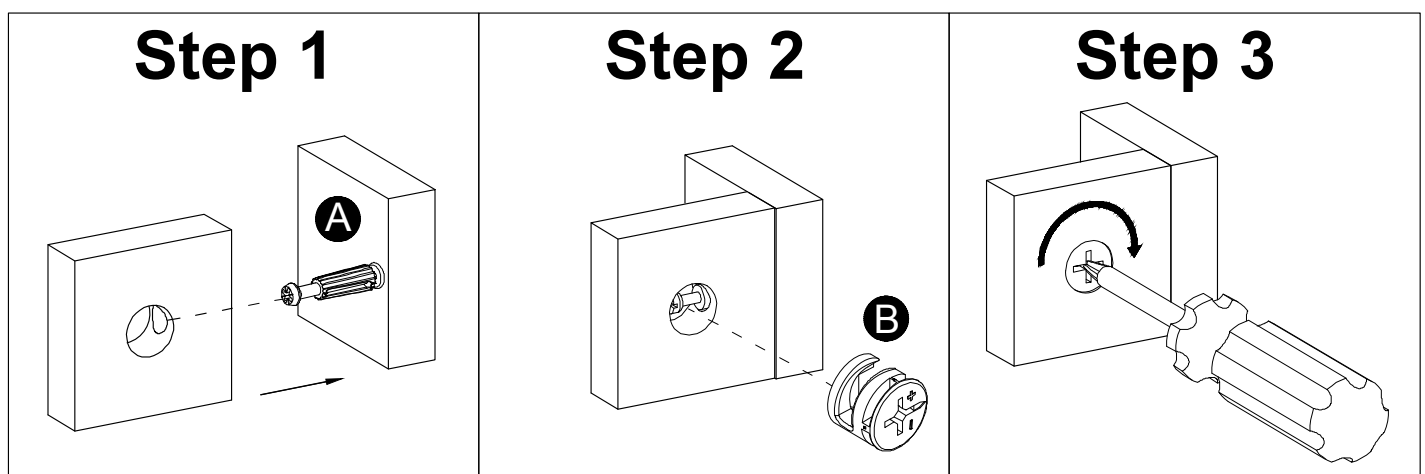
					
1 pc					

Installation of Cams and Pins

Step 1-2: Align the plastic part with the mounting hole and press it in. If you can't press it in, loosen the screw counter clockwise or completely remove the screw from the plastic part and try again.
Step 3-4: After pressing the plastic part into place, use a screwdriver to tighten the screw clockwise.

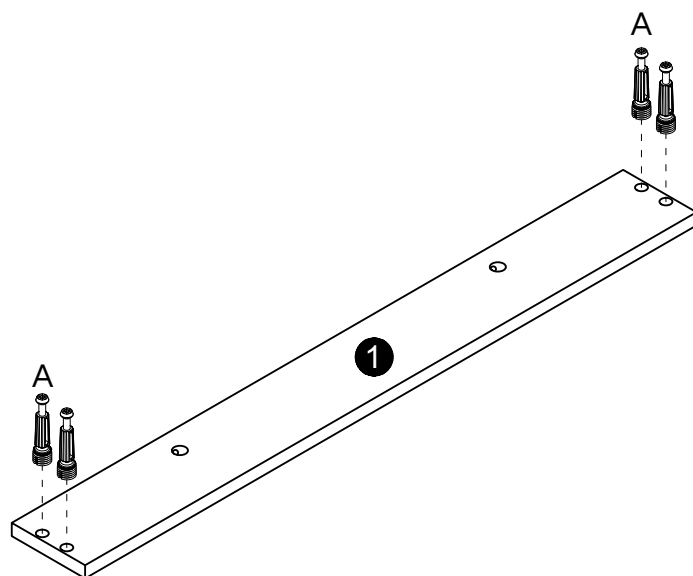



Screw the pin into the hole. Set the cams correctly by aligning the head of the cams with the lock pins. Lock the cam by turning the cam head with a screwdriver until it is tightened. Please do not use an electric screwdriver to assemble the unit.

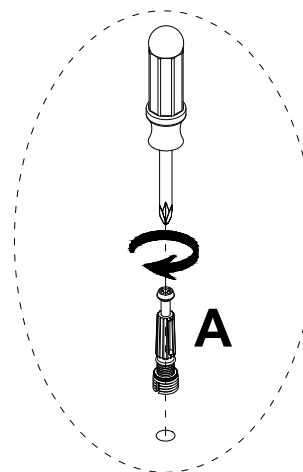




1

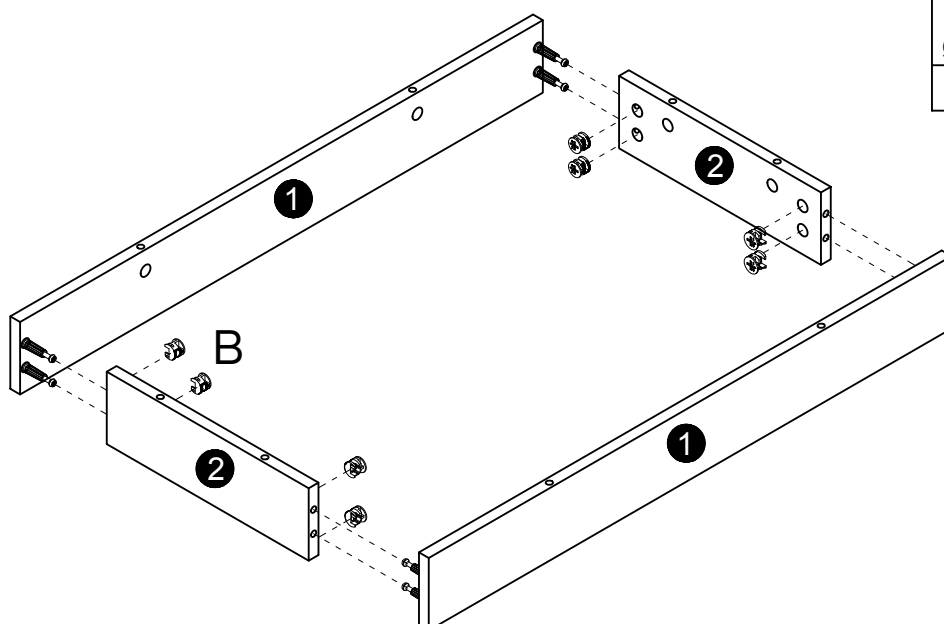
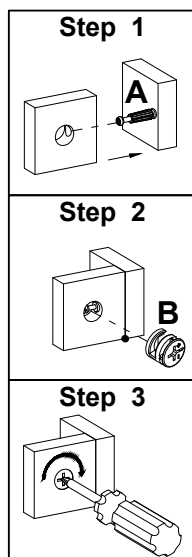



A

M6x35mm
8 pcs



x2

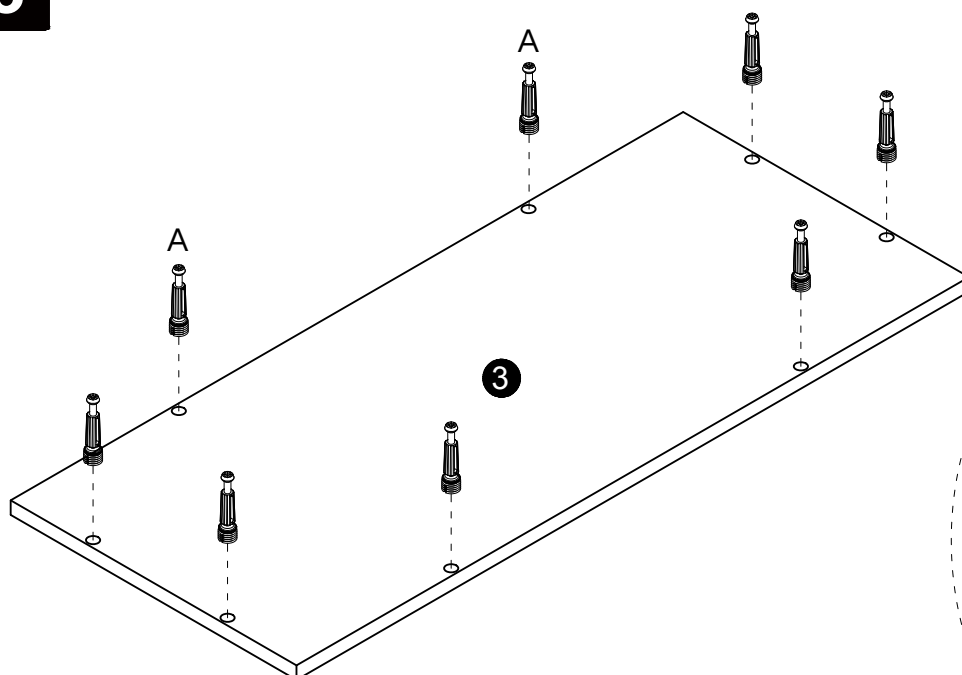
2



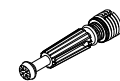
B

Ø15x12mm
8 pcs



3



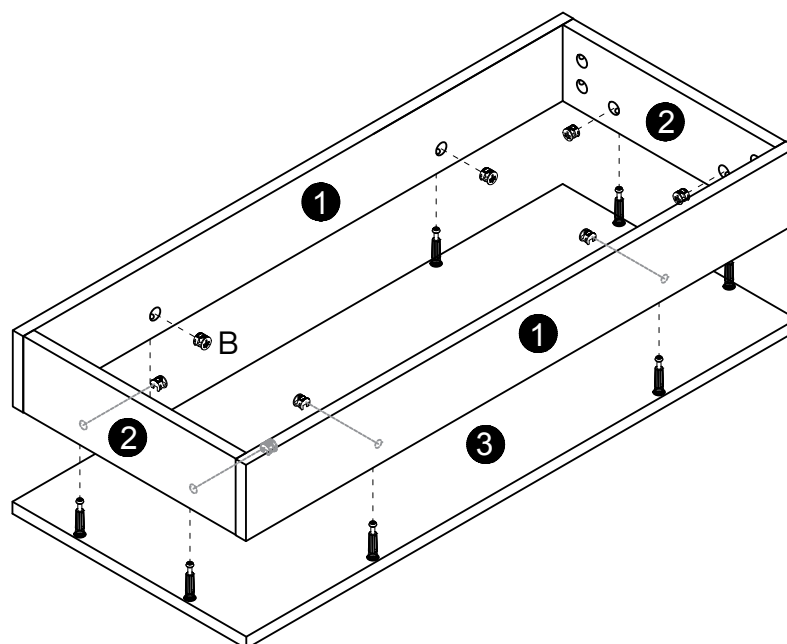
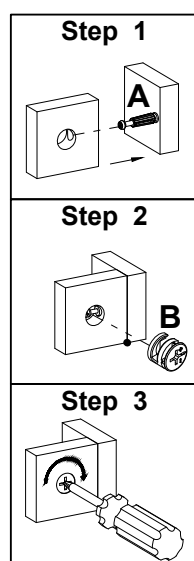
A



M6x35mm

8 pcs

4



B

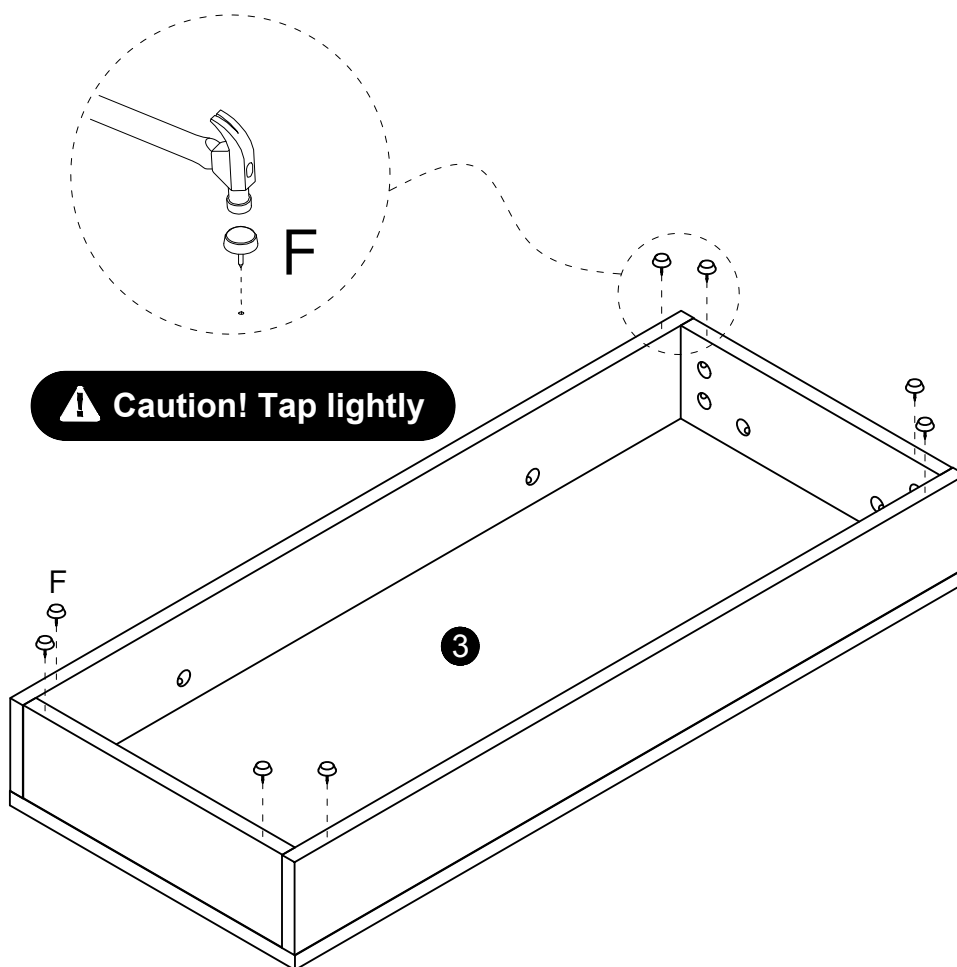


Ø15x12mm

8 pcs



5



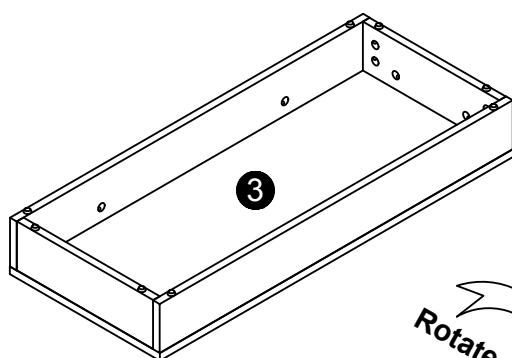
F



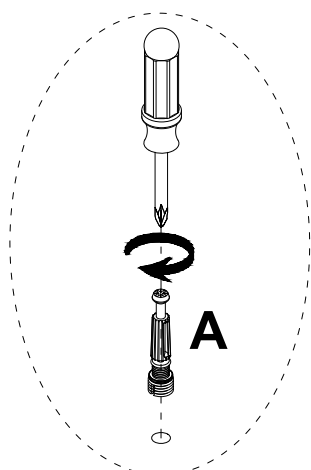
8 pcs

⚠ Caution! Tap lightly

6



Rotate 180°

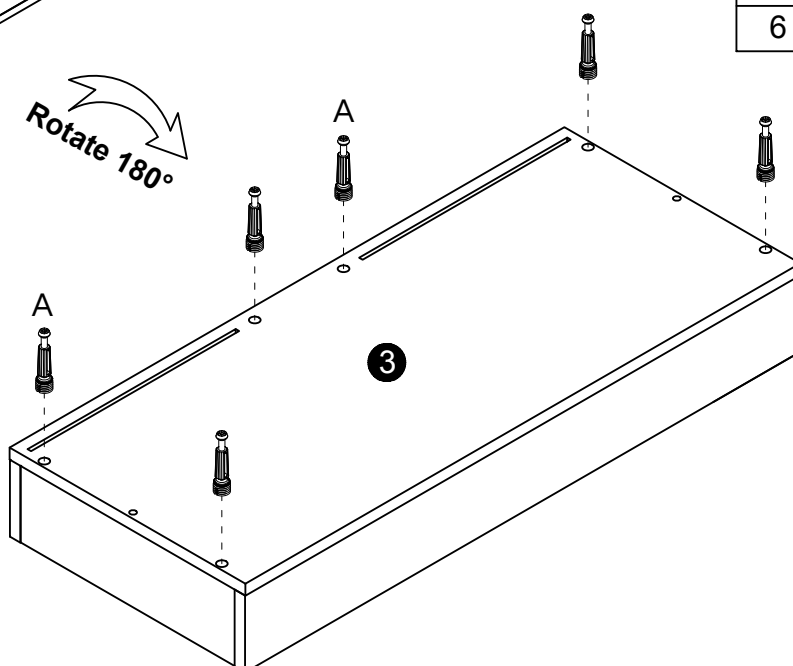


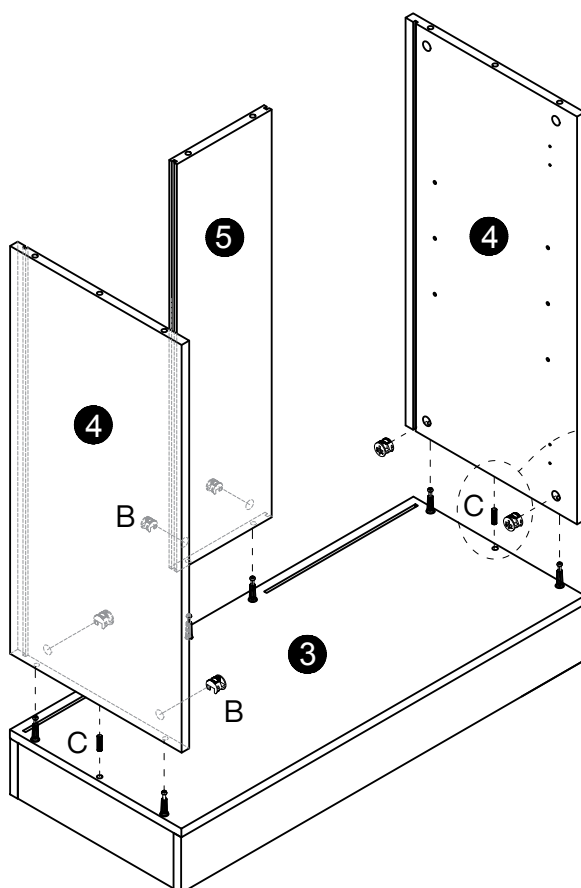
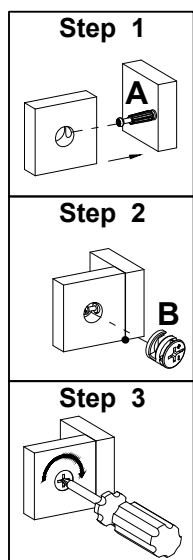
A

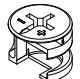
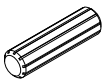


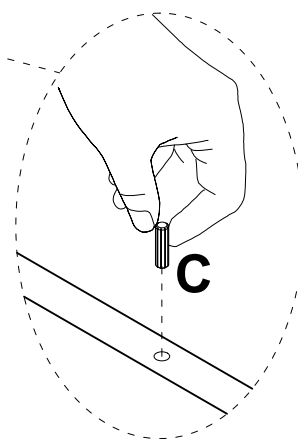
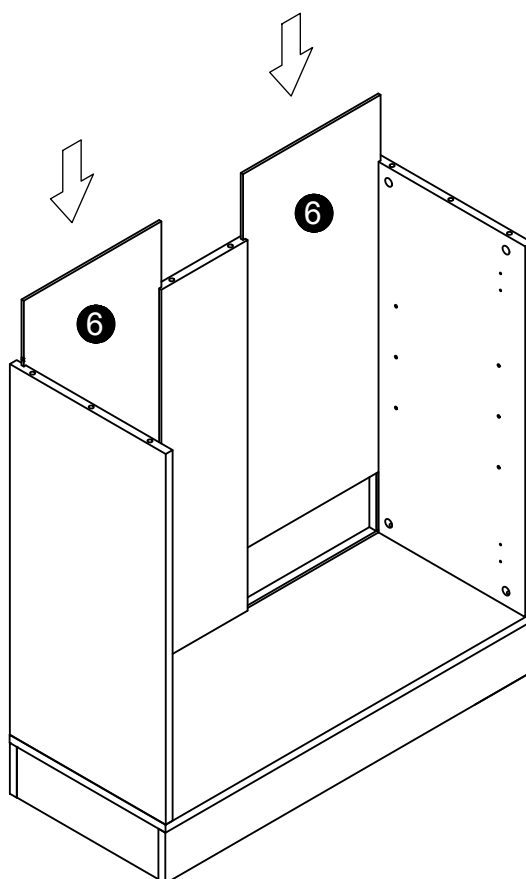
M6x35mm

6 pcs



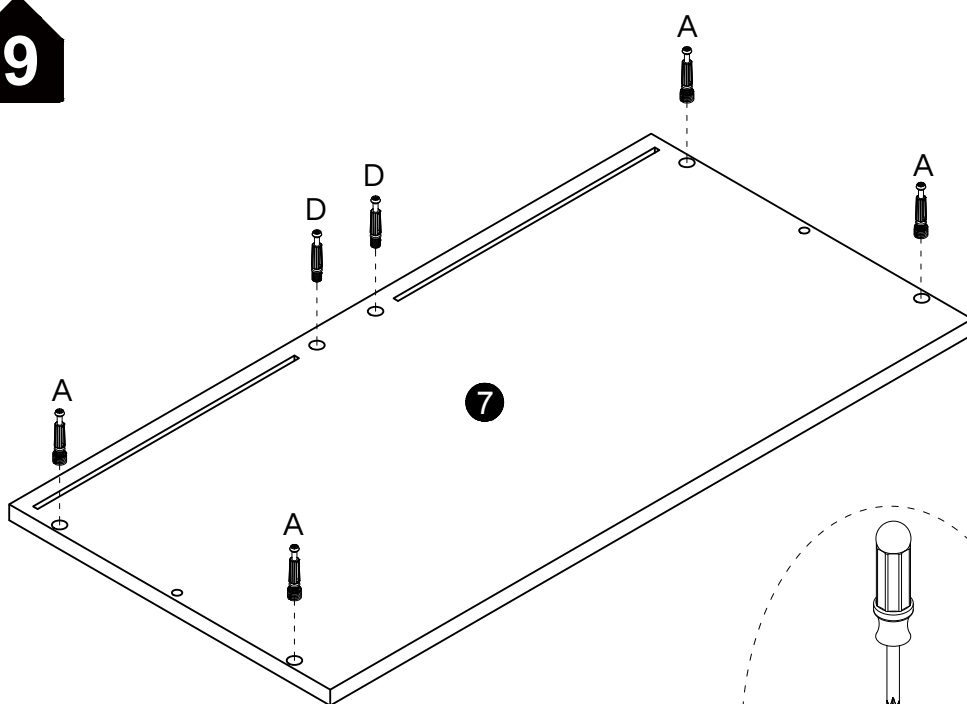
**7**



B	C
	
Ø15x12mm	Ø8x30mm
6 pcs	2 pcs

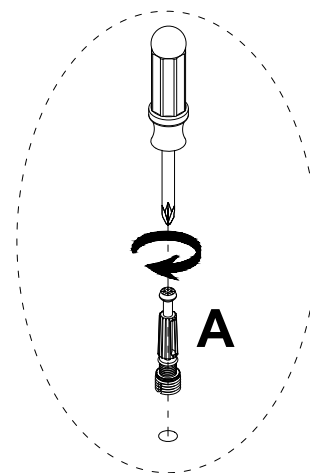
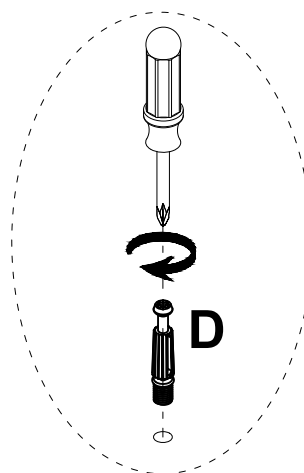
**8**



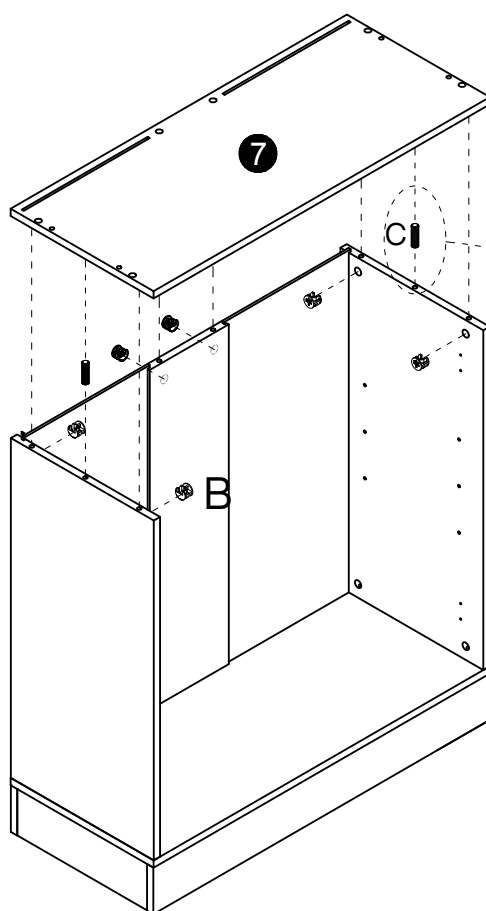
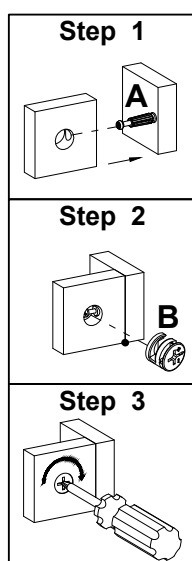
9

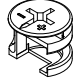
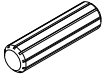


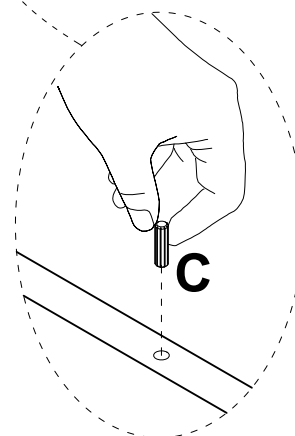
A	D
	
M6x35mm 4 pcs	M6x35mm 2 pcs



10

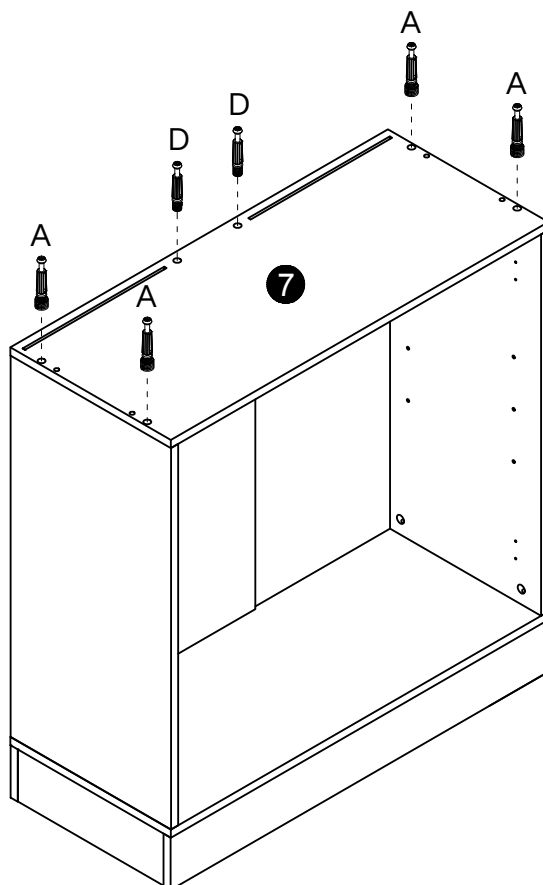
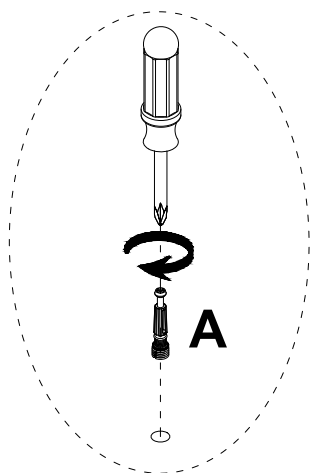




B	C
	
Ø15x12mm 6 pcs	Ø8x30mm 2 pcs

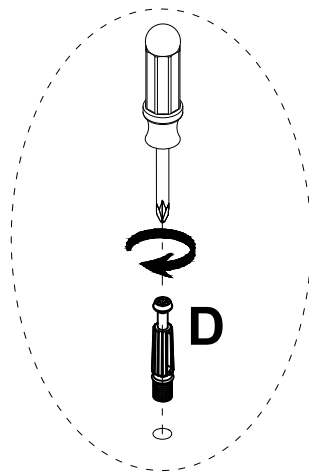




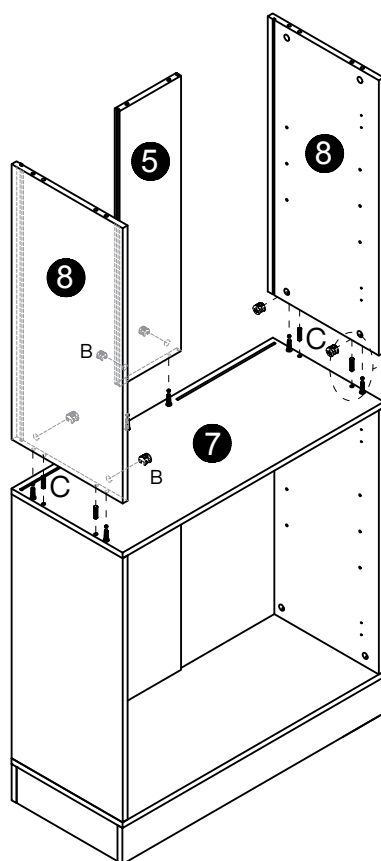
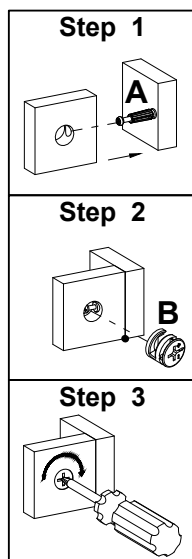
11





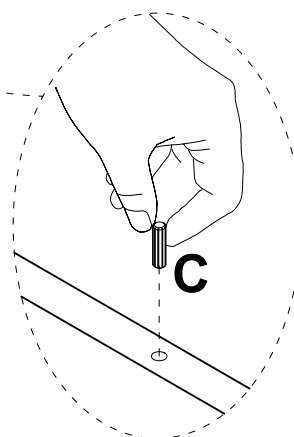
A	D
	
M6x35mm	M6x35mm
4 pcs	2 pcs



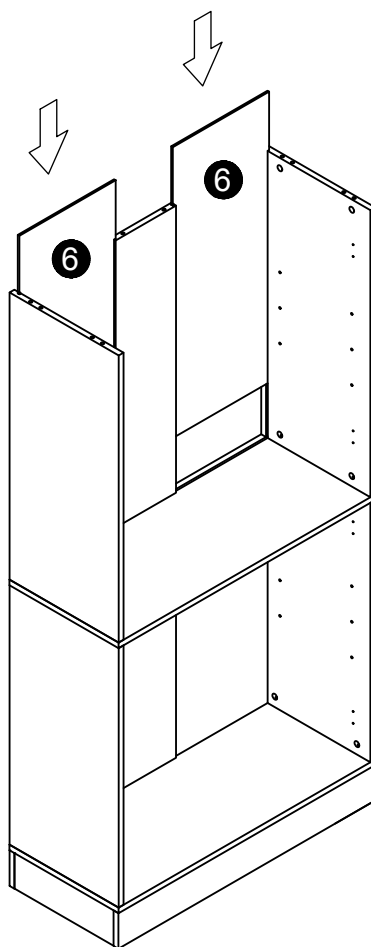
12



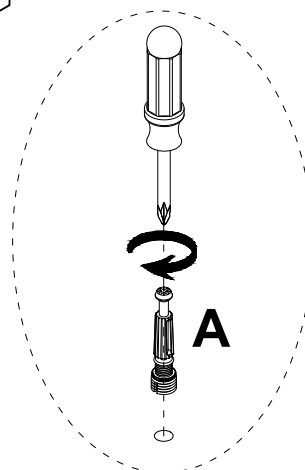
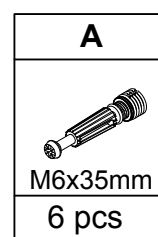
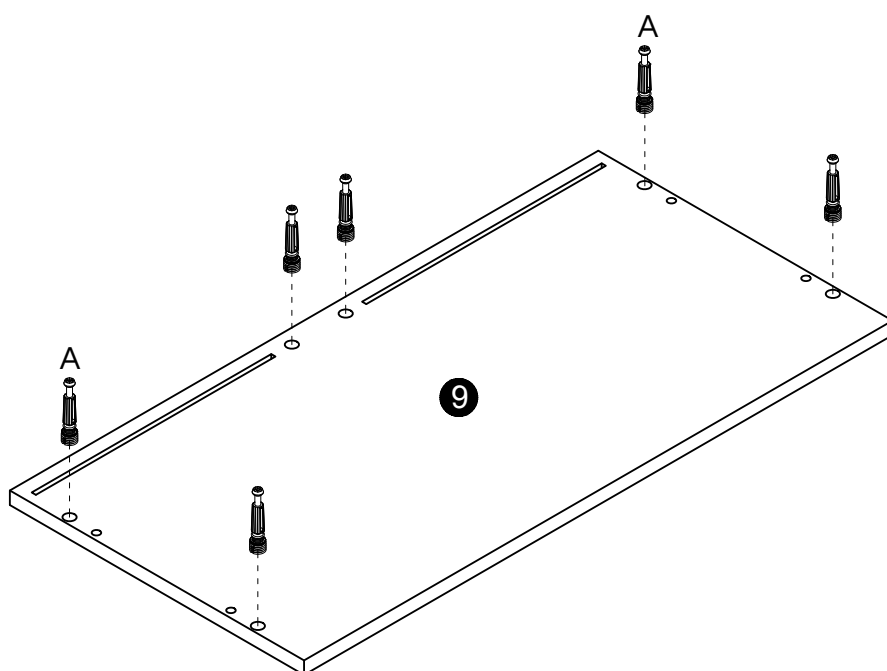
B	C
	
Ø15x12mm	Ø8x30mm
6 pcs	4 pcs



13


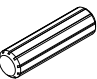


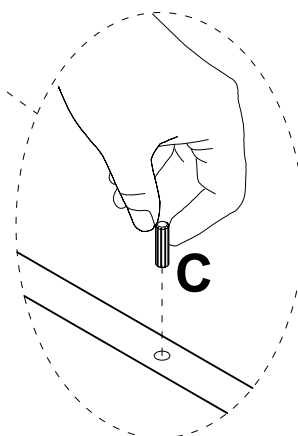
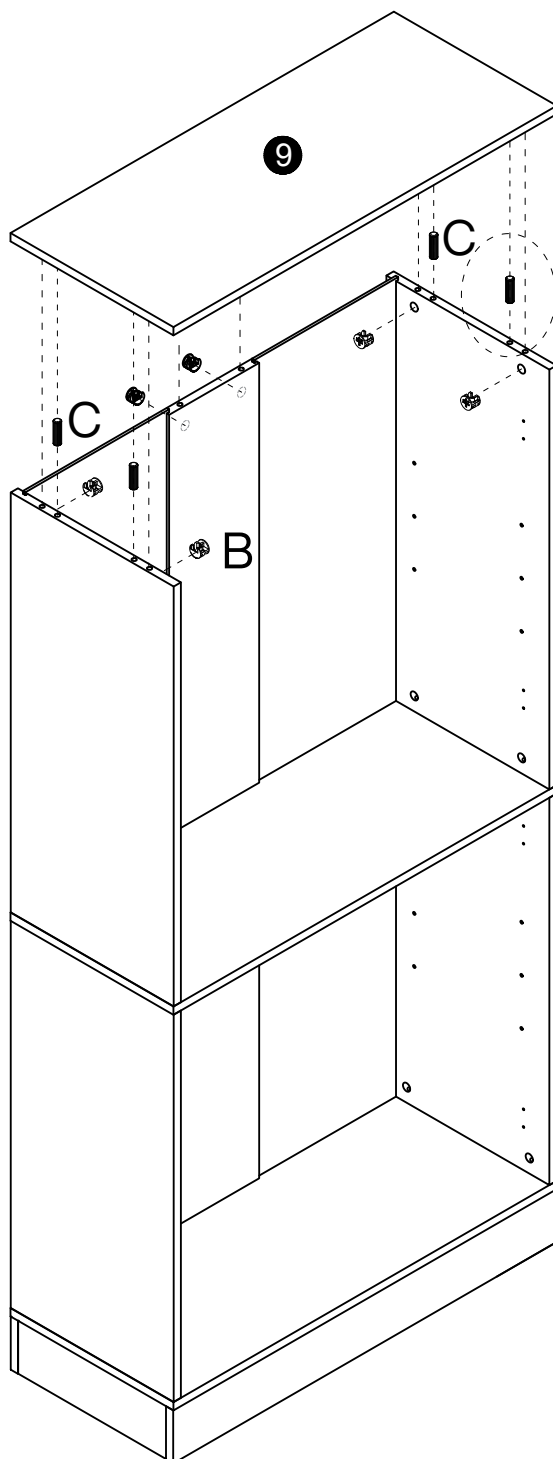
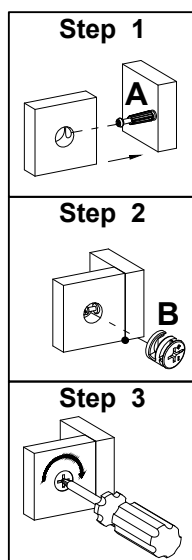
14





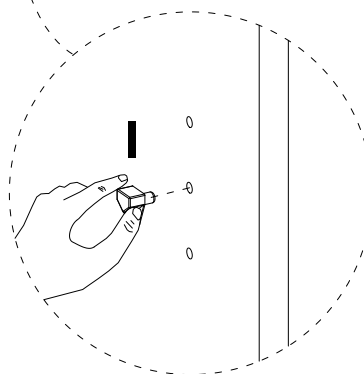
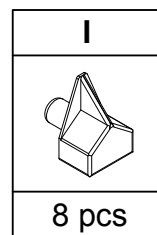
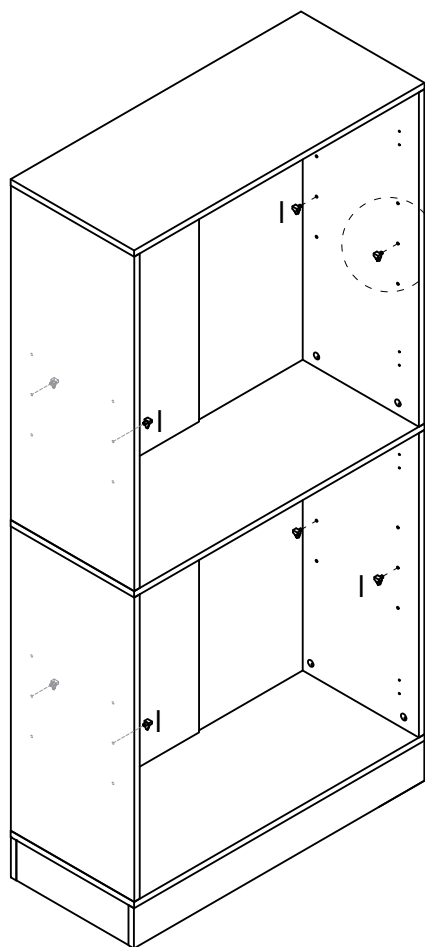
15

B	C
	
Ø15x12mm	Ø8x30mm
6 pcs	4 pcs

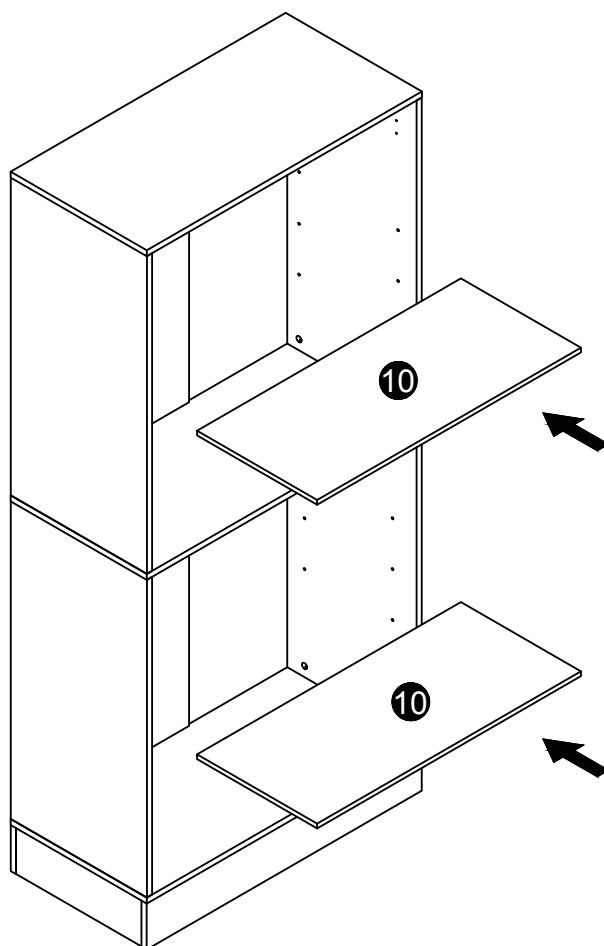




16

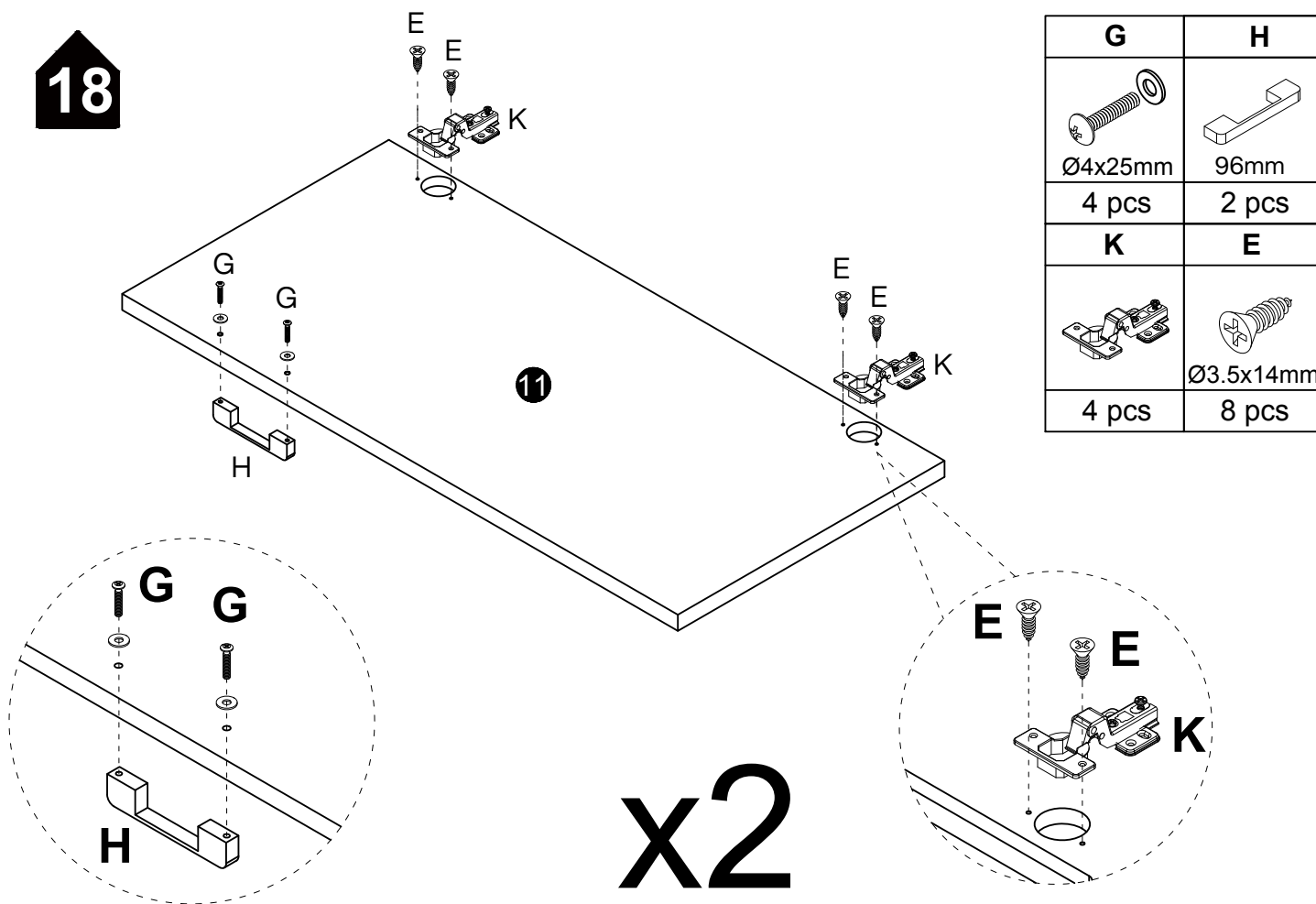


17

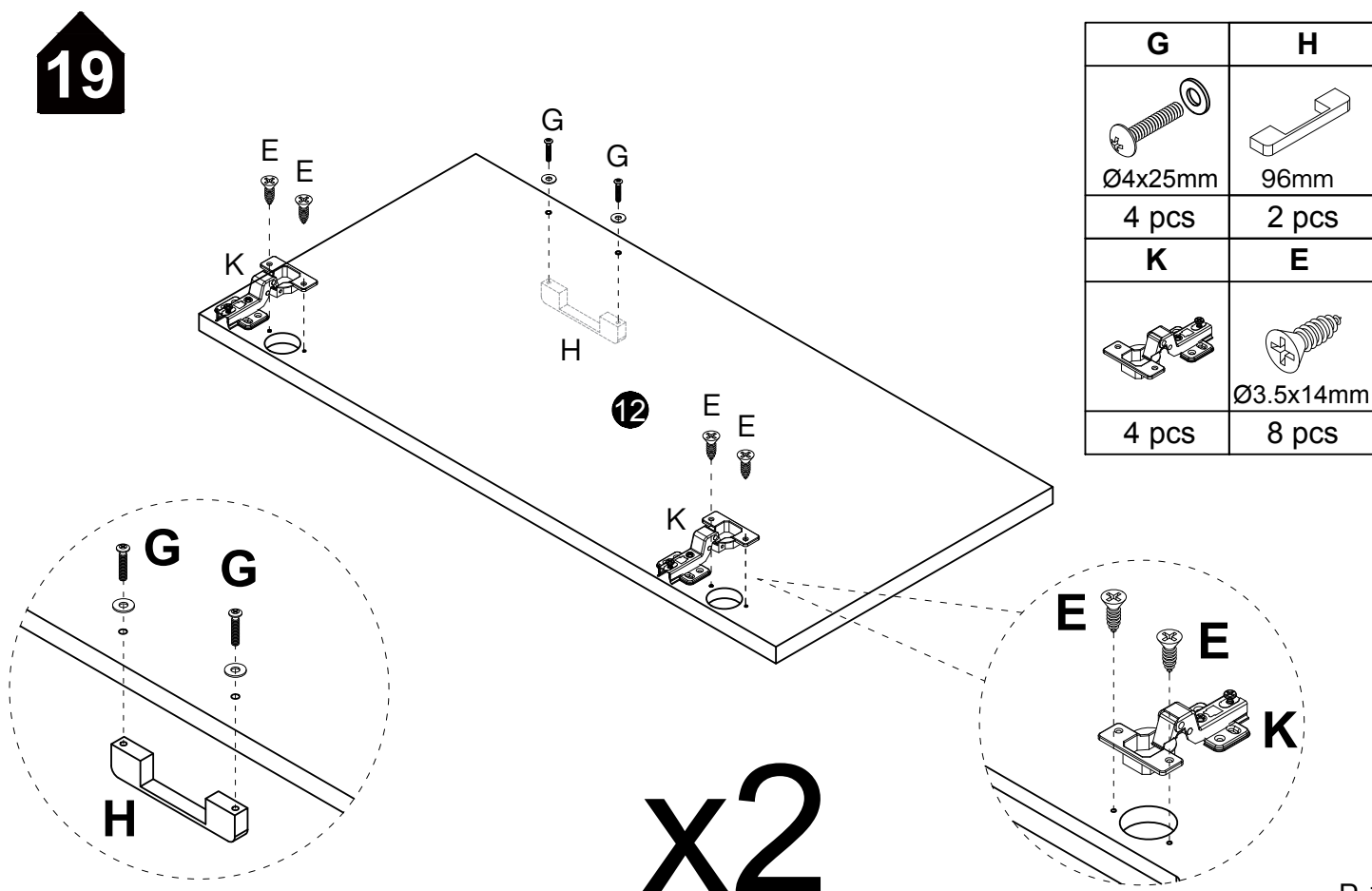





18

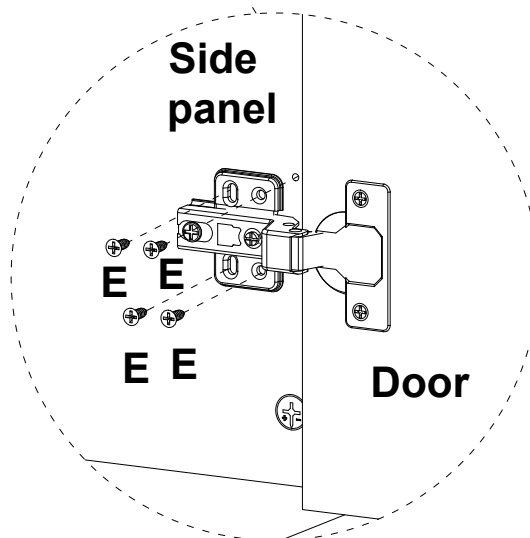
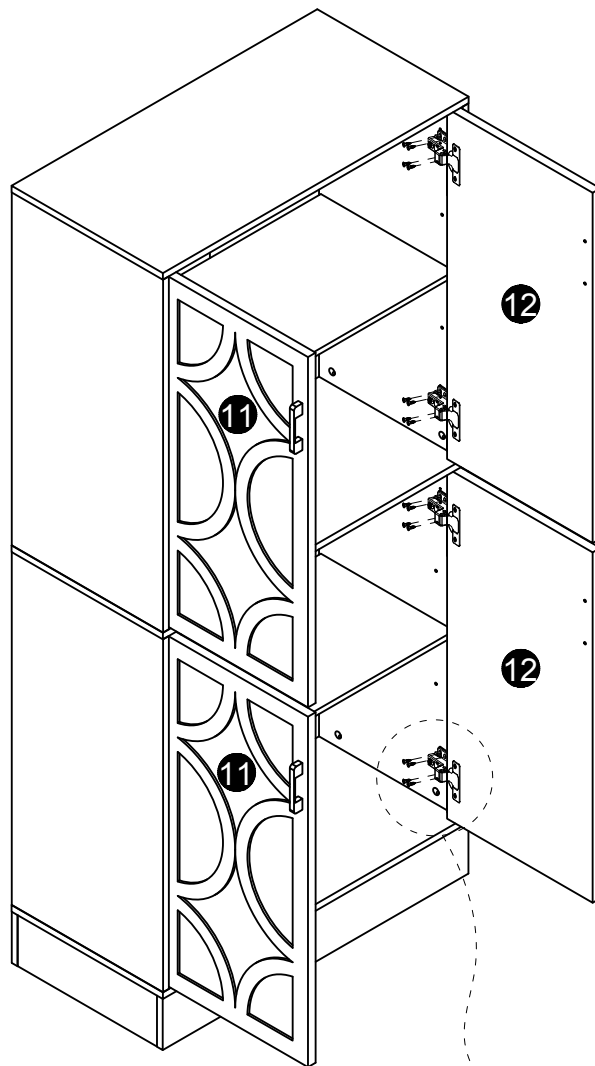


19



**20**

E

Ø3.5x14mm
32 pcs

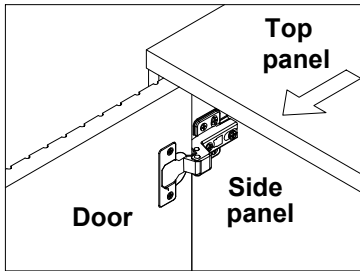


To prevent the door hinge from falling off, please install 4 screws



Step 1

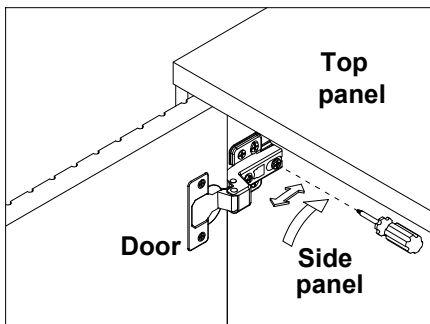
Open the door.



ADJUST YOUR DOORS TO MAKE THE GAPS MORE EVEN (OPTIONAL).

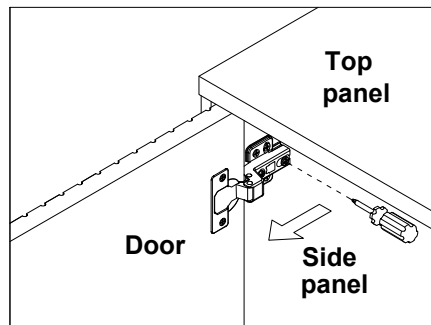
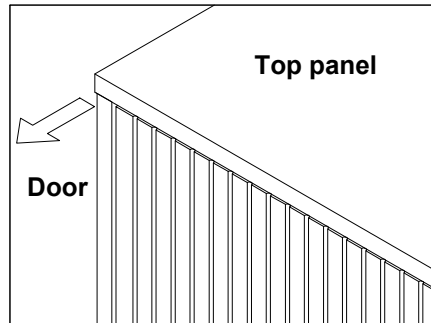
Step 2

Adjust the door panel to be flush with side panel and top panel edge.



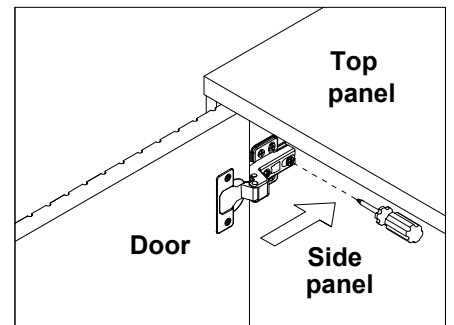
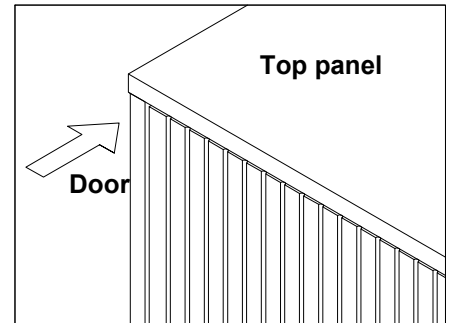
Loosen the screw indicated a little, adjust the hinge to the right position (see step 2a & 2b), then tighten the screw.

Step 2a MOVE DOOR OUT



Pull the hinge forward a little.

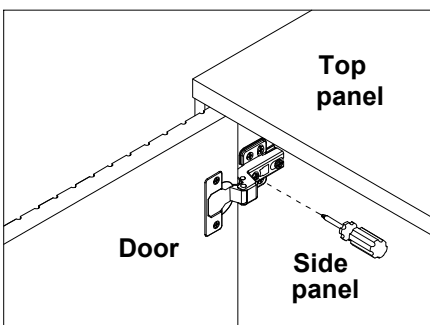
Step 2b MOVE DOOR IN



Push the hinge back a little.

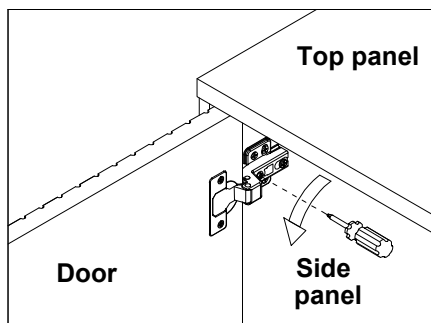
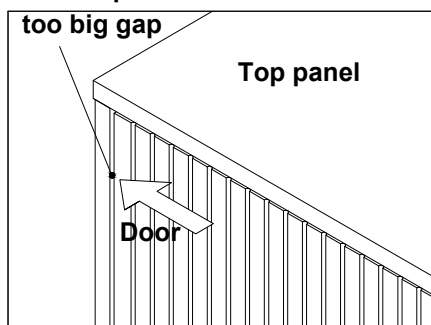
Step 3

Adjust the gap between the door panel and the side panel.



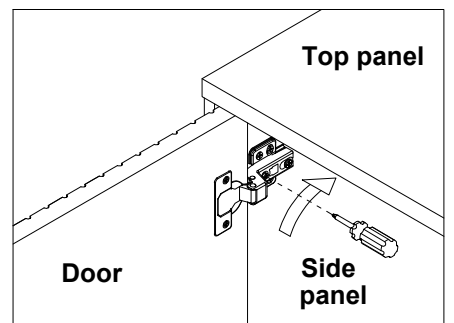
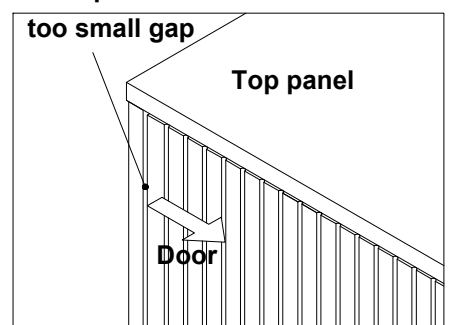
Loosen or tighten the screw indicated a little to adjust the gap between the door panels, adjust the hinge to the right position (see step 3a & 3b).

Step 3a MOVE DOOR LEFT

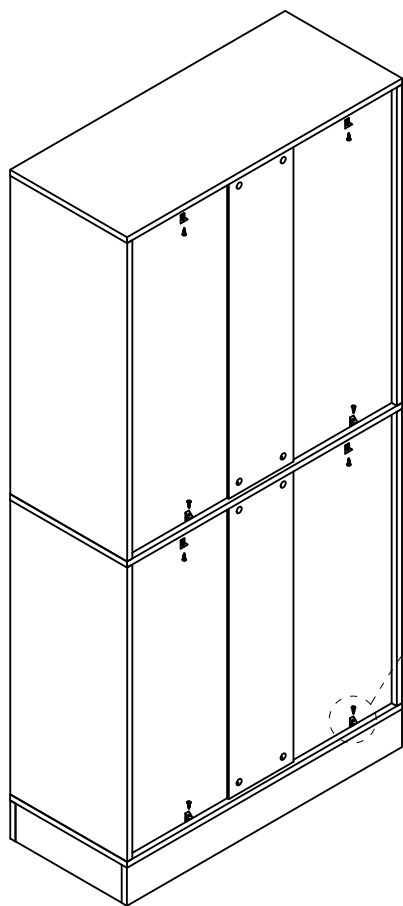


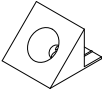
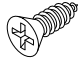
Turn the screw clockwise a little as shown to make the gap smaller

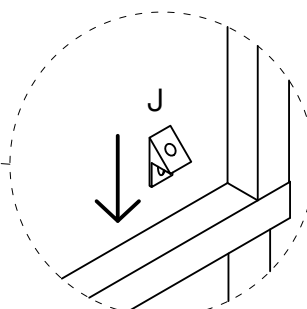
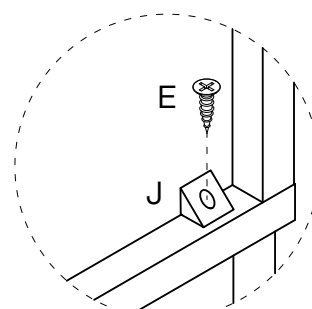
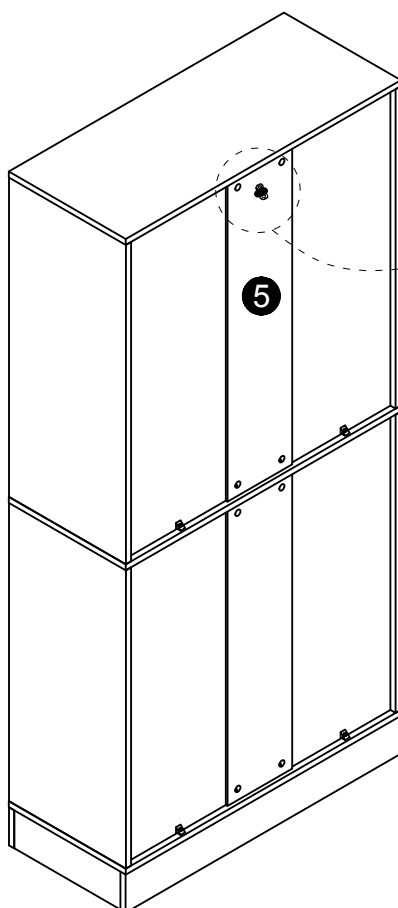
Step 3b MOVE DOOR RIGHT

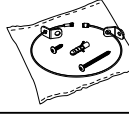


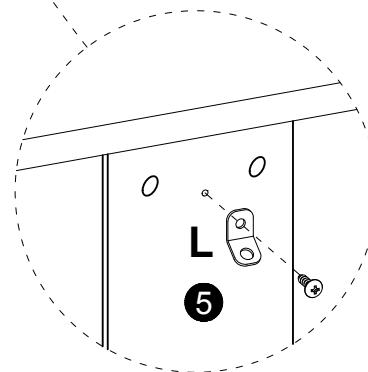
Turn the screw counterclockwise a little as shown to make the gap bigger

**21**

J	E
	 Ø3.5x14mm
8 pcs	8 pcs

**Step 1****Step 2****22**

L

1 pc

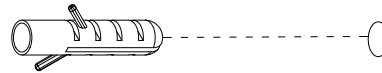




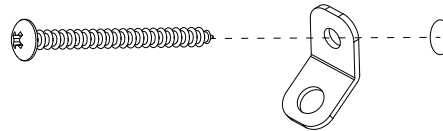
23

Wall

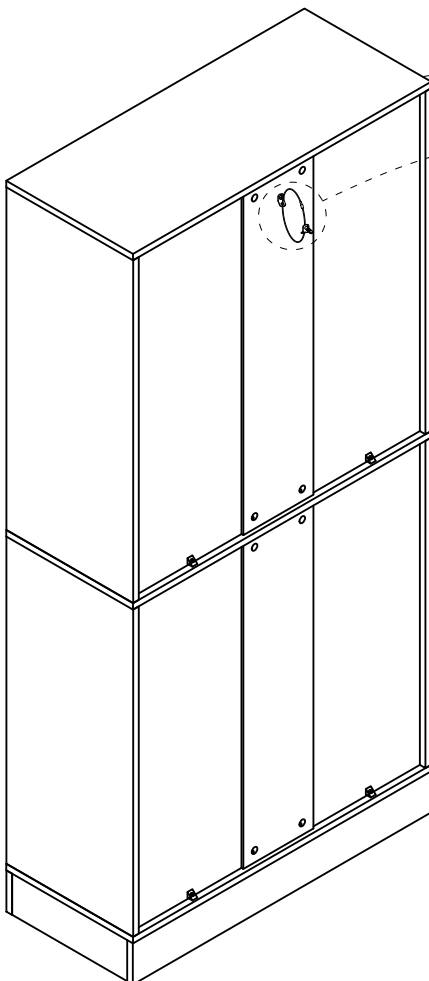
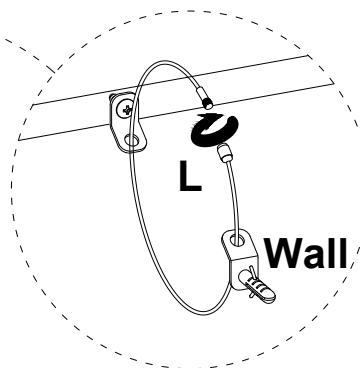
Step1



Step2



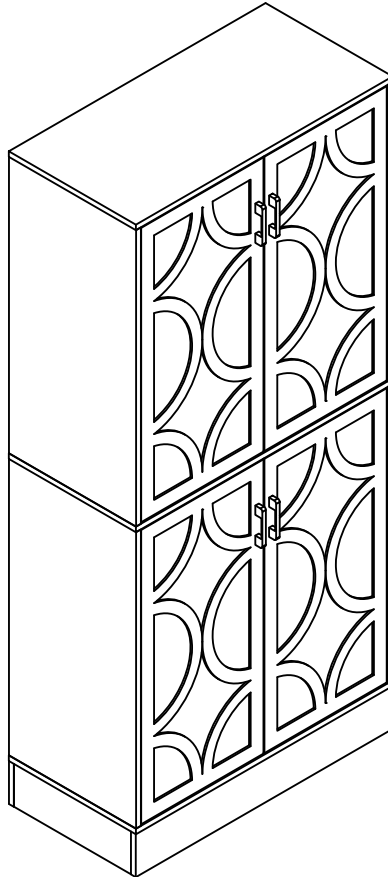
Step3





DESIGNED FOR LIFE

Thank you for your support !



Contact our customer service team



support@tribesigns.com
www.tribesigns.com



1-424-220-6888

7 AM to 8 PM EST,
Monday to Friday

Follow Tribesigns



Facebook



Instagram



Pinterest



Twitter



YouTube



TikTok



WhatsApp