

# Instruction manual

## Pop Up Socket

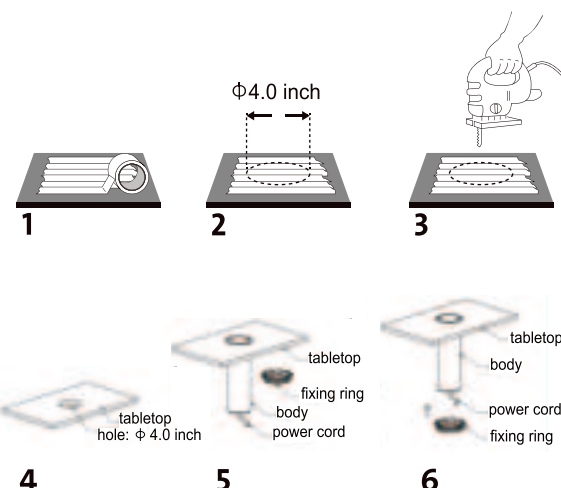
### CUTOUT AND MOUNTING STEPS:

- Select the desired location of a counter top or desktop, if used on a countertop need to be at least 10" from stove top or other heating sources.
- The selected location must be at least 0.79 inch (20mm) away from the edge of the countertop or similar surface.
- The mounting surface must be between 0.39 inch (10mm) and 1.77 inch (45mm) thick.

### Installation Instructions:

1. Lay blue painter's tape on the surface on the wood.
2. Mark the position of the hole and drill through the tape into the wood. Painter's tape is a better choice than all-purpose tan tape because it adheres less strongly and is easier to pull off.
3. Cut hole in surface of countertop of  $\Phi 4.0$  inch
4. Feed power cord through the hole through countertop first, followed by the main unit, pushing down until gasket rests on countertop.

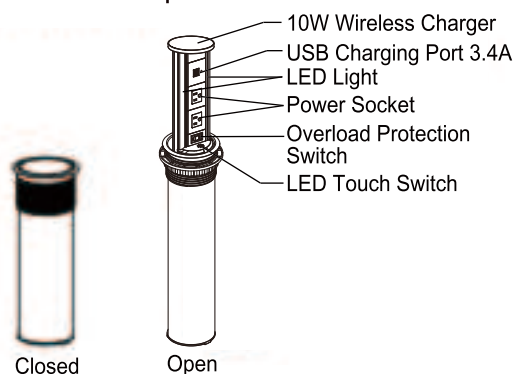
5. Feed power cord through locking flange and thread flange counterclockwise until locked in place again at underside of countertop.
6. To open pop up feature, press firmly on cover. Unit will deploy upward approximately 1" initially, then pull cover upward until unit locks into place. To close device, push the plastic locking tab and push down on cover until unit locks.



1

2

### Product description



### Specification

S.N.	Name	Details
1	Wireless charger	Output: 10W max(or customize)
2	USB charger	Output: DC 5V 3.4A(two ports together), 17W(max)
3	LED light	Power: 1.2W(max), dimmable, color temp 2500K
4	Power socket	As per type of power socket
5	LED switch	Touch switch, adjust the light brightness by pressing and holding
6	Overload protection switch	15A /125V, reset/off

3

Changes or modifications to this unit not expressly approved by the party responsible for compliance could void the user's authority to operate the equipment.

NOTE: This equipment has been tested and found to comply with the limits for a Class B digital device, pursuant to Part 15 of the FCC Rules. These limits are designed to provide reasonable protection against harmful interference in a residential installation. This equipment generates uses and can radiate radio frequency energy and, if not installed and used in accordance with the instructions, may cause harmful interference to radio communications.

1. Reorient or relocate the receiving antenna.
2. Increase the separation between the equipment and receiver.
3. Connect the equipment into an outlet on a circuit different from that to which the receiver is connected.
4. Consult the dealer or an experienced radio/TV technician for help.
5. This equipment complies with FCC radiation exposure limits set forth for an uncontrolled environment. This equipment should be installed and operated with a minimum distance of 20cm between the radiator & your body. This transmitter must not be co-located or operating in conjunction with any other antenna or transmitter.

4