



Wi-Fi LED Light Bulb

16 million colors

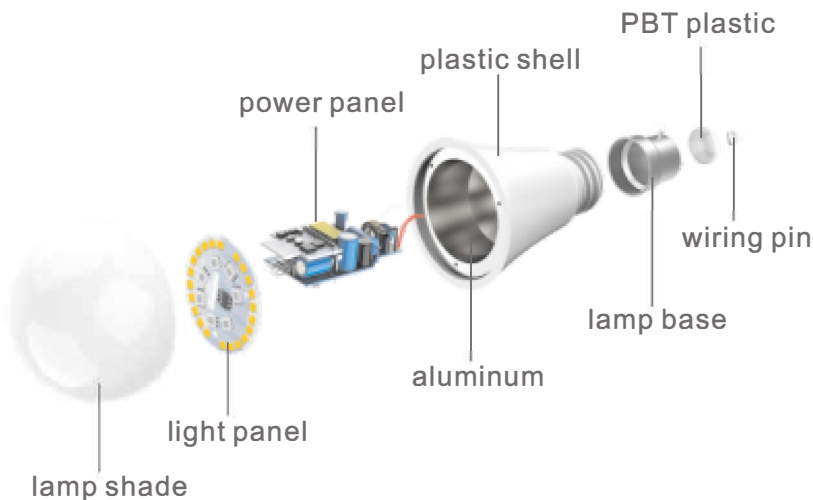
► Foreword

Welcome to Gosund. This user guide is intended to provide you important information about Gosund Wi-Fi Smart Bulb. It is suggested that you read this user guide before installing the bulb. If you have any question, please feel free to contact us at service.eu@gosund.com. Our customer service team will reply to you as soon as possible.

► Product Package

- 1.Smart Wi-Fi Light Bulb
- 2.User Manual

► Product Structure



► LED SMART BULB

Input Voltage	100-240V~ 50/60Hz
Power	8W
Incandescent Equivalent	75W
Luminous Flux	800Lms
Fixture Features	Wi-Fi Remote Control, Color Changing. Dimmable, Timer, Scenes
LED Color	RGB+W
Cap Type	E27
Wi-Fi	802.11b/g/n 2.4GHz
WiFi Frequency	2412MHz-2472MHz
Wori-Fi Max. Transmitting Power	20dBm

► Install the Light Bulb

1.Disconnect the power supply before installation of the Light Bulb. The light is white when switch on after successful installation. (please note, the cap type of the Light bulb is E27

► Download “Gosund” APP

1. Search “Gosund” App on App Store, Google Play or scan the QR code below and install it.

2. Please open the “Gosund” App. Click register and type in your email address to automatically create an account, otherwise type in your phone number to get a verification code to register an account. If you already have a “Gosund” account, simply click login with your account.

3. The free APP “Gosund” is compatible with mobile devices that supports IOS 8.0 above and Android 4.4 above.



Gosund

3 Steps to get the light flash rapidly.

< To connect in EZ mode

the light needs to be set to flash rapidly. Please follow the 3 steps below to finish setting.

Step 1/3
Power on device.
Power off after 10s and then power on



Step 2/3
Turn on-off-on-off-on
Keep time interval not too short,
turn off after light is on



Step 3/3
Confirm light bulb is now rapidly flashing



Confirm indicator rapidly blink

3. Make sure the light bulb is now rapidly flashing and confirm it in the app.



4. Choose your Home Wi-Fi (make sure your phone is connected to 2.4GHz Wi-Fi channel not 5GHz) and enter the correct password. If the Wi-Fi network is 5GHz or the password is incorrect, it will lead to “connection failure”.

← Add Device

Enter wi-fi password

This app is supported only on 2.4GHz Wi-Fi channels

📶 Gosund [Change Network](#)

🔒 123456

OK

5.Finally, wait to successfully configure, then tap “Completed”.

← Add Device

Connecting

Make sure your phone and device are as close to you router as possible.

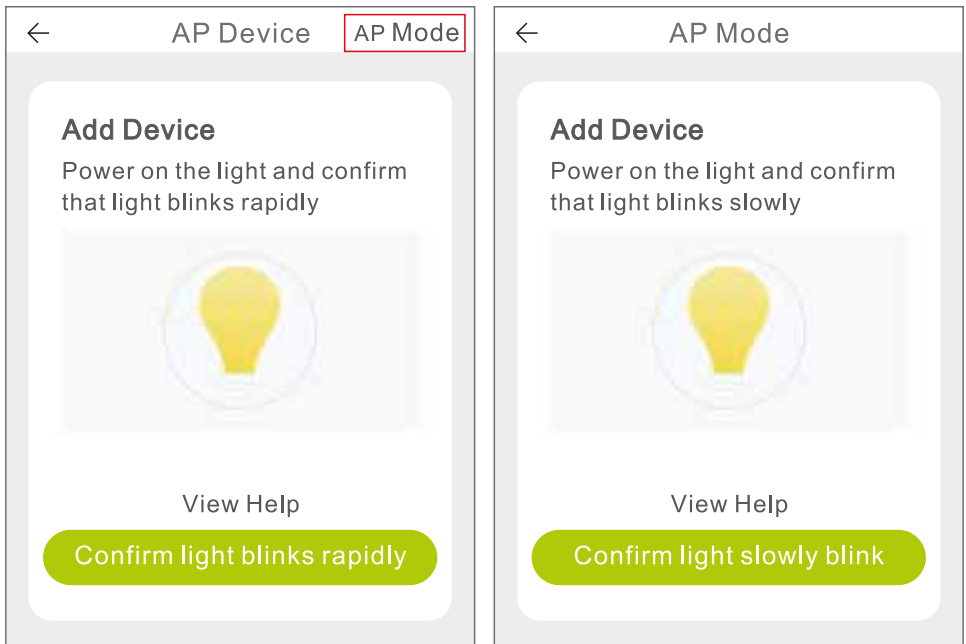
18%

Device found
Register device to the cloud
Initializing device

B.AP Mode

Please switch to “AP Mode” if the connection fails in “Easy Mode”.

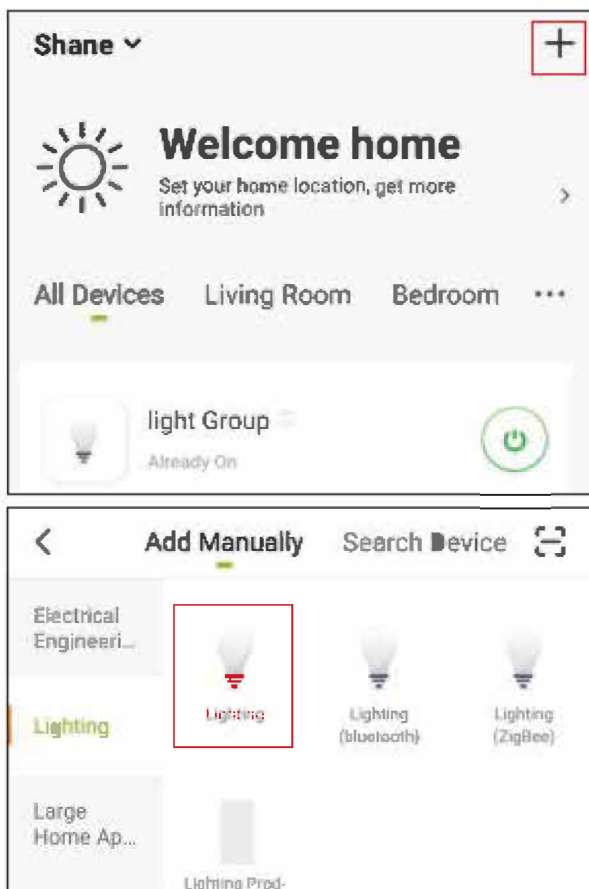
1.The AP mode is located at the upper right corner of the “Add device” page.



► Connecting the device with “Gosund” APP

A.Easy Mode (Recommend)

1.Please open “Gosund” App. Tap the “Add Device” or the “+” sign at the upper right hand corner of the page and select “Smart Lighting”



2.Please make sure that the Gosund Smart Light bulb is installed correct.

2.Four steps to get the light flash slo

<

To connect in AP mode

the light needs to be set to flash rapidly. Please follow the 3 steps below to finish setting.

Step 1/4

Power on device.
Power off after 10s and then power on





Step 2/4

Turn on-off-on-off-on
(Keep time interval not too short, turn off after light is on)





Step 3/4

Confirm light bulb is now rapidly flashing
Then take the next step.



2 times
per second

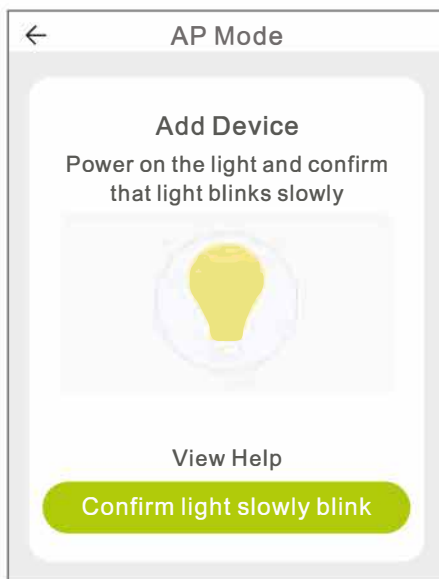
Step 4/4

Operate again: Turn on-off-on-off-on
until light is slowly flashing

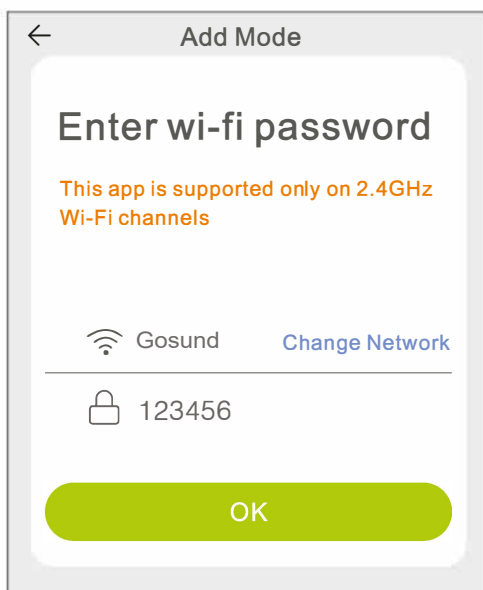


1 time
every 3s

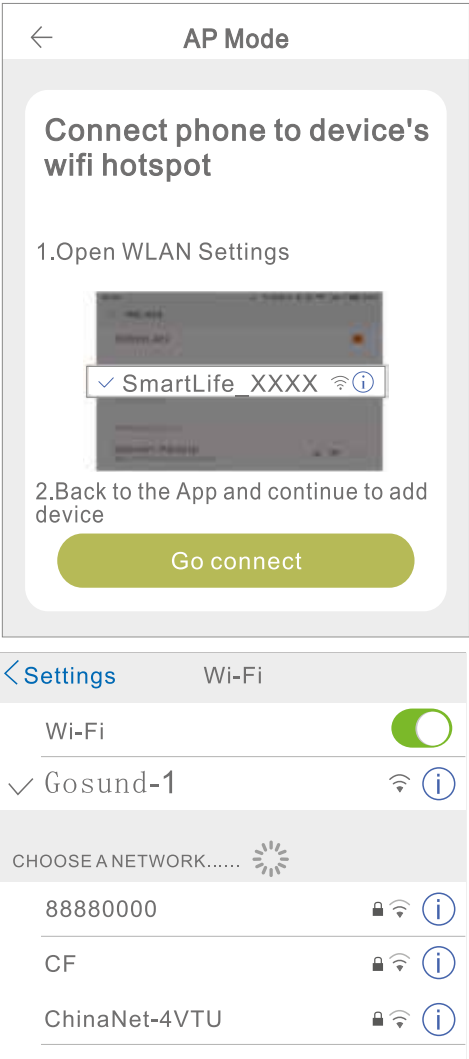
Confirm indicator rapidly blink



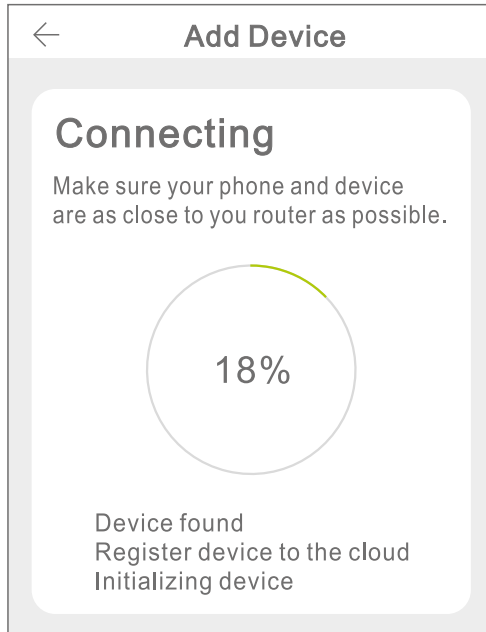
3. Choose your home Wi-Fi and enter the correct password then confirm it in the APP.



4. Tap “Connect Now”, choose Wi-Fi hotspot named “Smart Life XXX”. If it shows, the current WLAN network cannot access the Internet. Switch to another network?”, just tap “CANCEL” and go back to the “Gosund APP”.



5.Finally,wait to successfully configure and tap “Completed”.



Note: if the connection fails in “AP Mode”, please check if your router is dual-band Wi-Fi.If it is dual-band Wi-Fi, please enter the router management interface to split 2.4G and 5G Wi-Fi, and then connect 2.4G Wi-Fi.

► Getting to know “Gosund”APP

A.Functions of Devices

You can add listed devices by tapping the “+” at the top right corner of the home page.

1.Switch: Remote Control

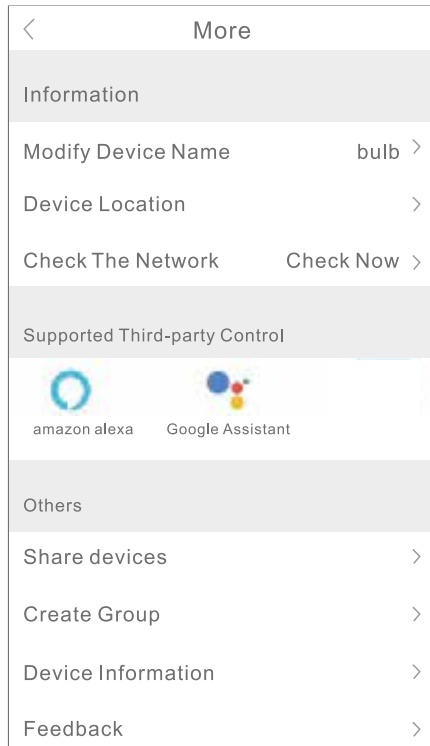
Switch function allows you to simply remote control single/group lights to set brightness, warmth, or colour of the bulbs through a simple tap on your smart phone after downloading the free APP even when you are away on vacation.

2.Timer Schedule

With this function you may set light on/off at a specific time as you want, which will be convenient at night time when sleeping, or when you arrive and leave office or your home. Schedule can be repeated daily or weekly.

3.Statistics

You can view real-time your device's energy consumption, which keeps energy bills low by effectively managing your most power consuming appliance.



B.Scenes

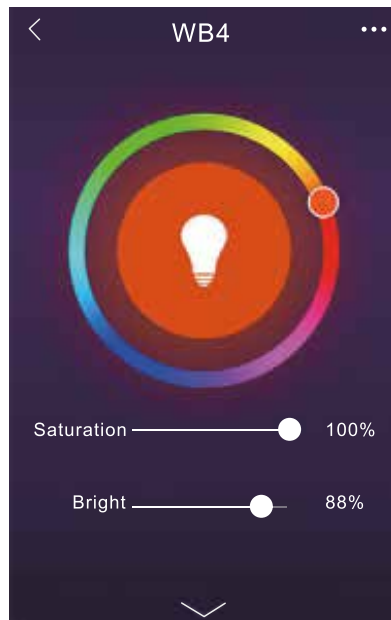
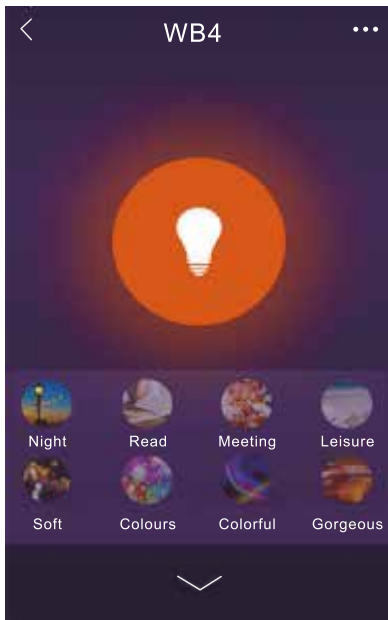
1.Touch the right top icon, then you can create your characteristics to the device you want.

2.You can change the name of the device,and choose to control the device by third-party devices such as Amazon Alexa and Google Home.

3.You can share the device to your family or create a group to help you control your devices at home.

4.16 million colors are available, and

eight scenes for your choice, four scenes designed as Night, Read, Meeting, Leisure mode, and other four scenes can be randomly created based on your favor; Saturation and bright is adjustable as well. Choose different colors and brightness to suit your mood.

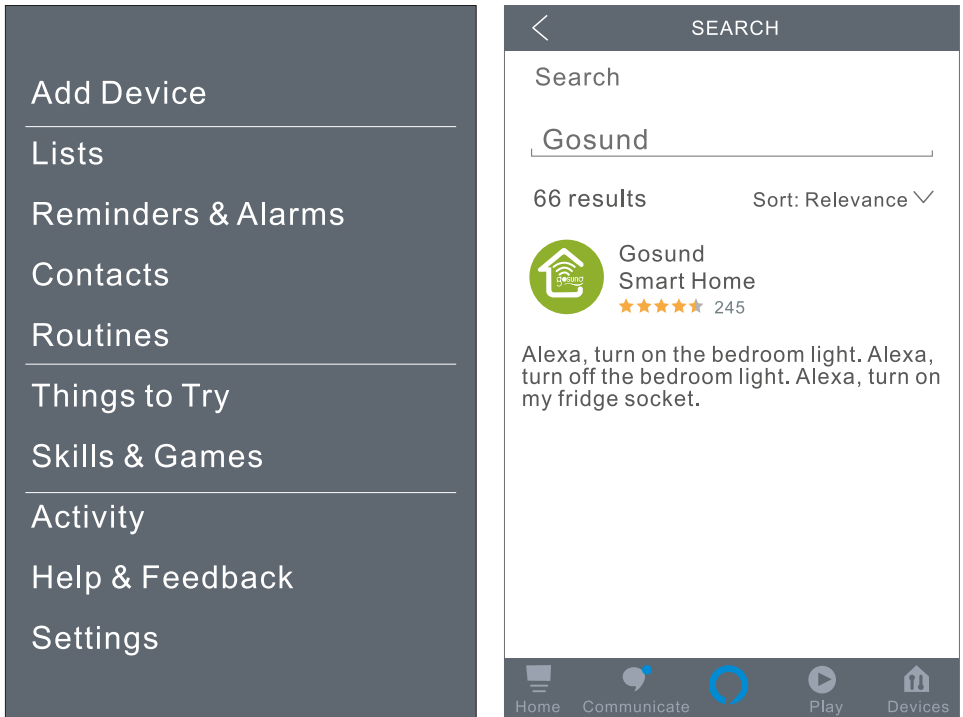


► Using Amazon Echo Quick Guide What You'll Need...

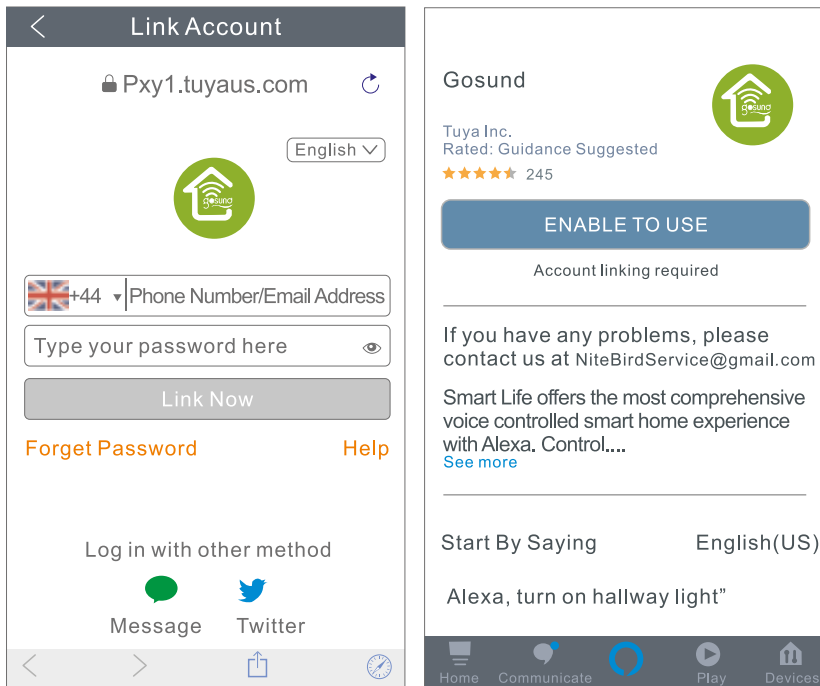
Make sure your Echo dot is connected with your Amazon Alexa and you have "Gosund" APP account.

A.Enable our Skill in Alexa APP

Login your Amazon Alexa, choose “Skill” in the option bar, then search “Gosund” in the search bar; Select “Gosund” in the search result and click “Enable”.



1. Input your account and password that you have registered at “Gosund” APP. When you set the right page, it means your Alexa account is connected with your “Gosund” account.

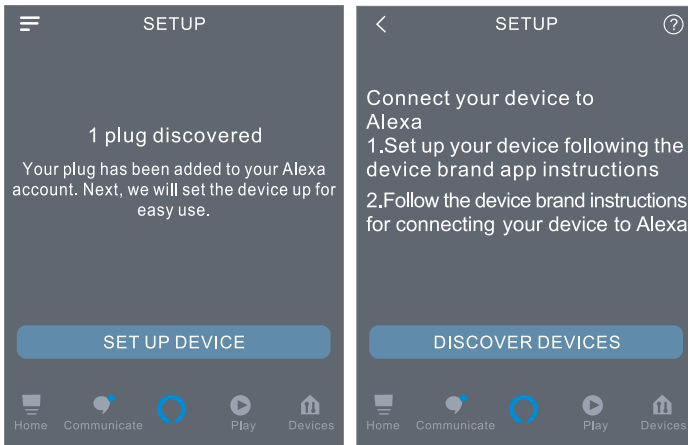


B.Control Smart Bulb by Voice

After Alexa is linked to your “Gosund” APP, you can now control the bulb via Echo.

1.Discovering device simply say to Echo: “Echo (or Alexa), discover my device.” or choose “add device” to discover the smart bulb. Echo will start to find the device which is added in “Gosund” APP. It will take about 20 seconds to show the result. Or you may click “Discover device” on the Alexa APP, it will successfully show available devices.

Note: Echo is one of the wake-up name, the other two names are Alexa and Amazon.



2.Support Skill List

You can control devices by instruction like below:

“Alexa, turn on/off(name of the smart bulb)”

“Alexa, turn on the light.”

“Alexa, turn off the light”

Note: The name of the device must be consistent with the name of the bulb on the “Gosund” APP. The name is recommended to use easy pronunciation of English words. (Amazon Echo just supports English temporarily.)

► After-sale & Warranty

All Gosund products come with a limited warranty of 24 months from the date of purchase. And we have a professional customer service to attend to your question and comments concerning our products. Please do not hesitate to contact us at our Official Facebook page.

We will do our best to help you resolve any problems you might have about our products until you are satisfied. We appreciate your support and cooperation.

► WEEE Disposal and Recycling Information

All products bearing this symbol are waste electrical and electronic equipment (WEEE as in directive 2012/19/EU) which should not be mixed with unsorted household waste. Instead, you should protect human health and the environment by handing over your waste equipment to a designated collection point for the recycling of waste electrical and electronic equipment, appointed by the government or local authorities. Correct disposal and recycling will help prevent potential negative consequences to the environment and human health. Please contact the installer or local authorities for more information about the location as well as terms and conditions of such collection points.

Hereby, Shenzhen Cuco Smart Technology Co.,Ltd
declares that the radio equipment type
gosund smart plug is compliance with
Directive 2014/53/EU. The full text of the EU
declaration of conformity is available at the
following internet address:
<https://files.innpro.pl/Gosund>

►Contact Us

Manufacturer: Shenzhen Cuco Smart Technology Co.,Ltd

Address: Room201, 301, Building A, No.12,
Difu Road, Guxing Community, Xi Xiang
Street, Bao'an District,
Shenzhen, China, 518000.

Website: www.gosund.net

Email Support: service.eu@gosund.com

