

Unboxing Instruction

Please open the box carefully and take off protection such as lining and covers.

Check all parts make sure all components and parts are not damaged.

Do not use damaged components or parts.

Read this manual before installation.

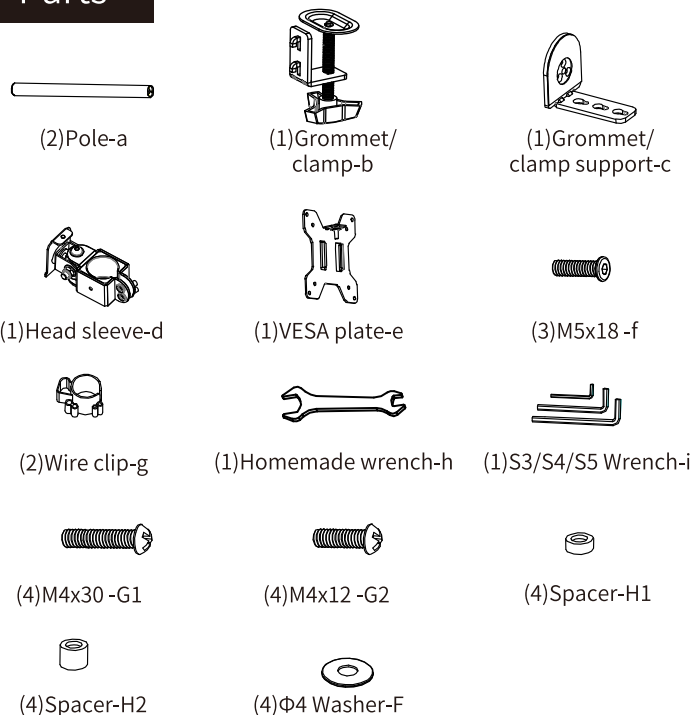
Important Safety Information

Please be careful during installation and operation. Read this manual before installation. Follow the manual and use tools as advised in the package.

Installation need to be completed by professional or under others help. Do not disassemble any components if there is no instruction in the manual. We are not

responsible for any loss due to incorrect installation or incorrect use of this item.

Parts



WARNING

CAUTION!

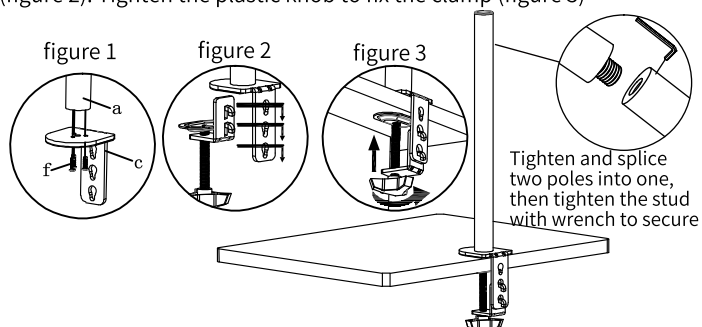
This monitor desktop mount must be securely attached to the horizontal desk. If the mount is not properly installed it may fall, resulting in possible injury and/or damage.

Step 1 Install the Pole on a Desk

Option A: Clamp installation

1. Connect clamp support (c) and pole (a) with 3 pieces of M5x18 (f) and tighten it with wrench (i) (figure 1).

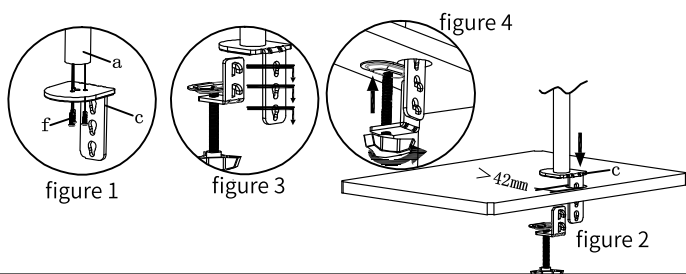
2. Connect clamp (b) and clamp support (c) with pre-positioned screws and choose proper hole sit according to the thickness of desk (figure 2). Tighten the plastic knob to fix the clamp (figure 3)



Option B: Grommet installation

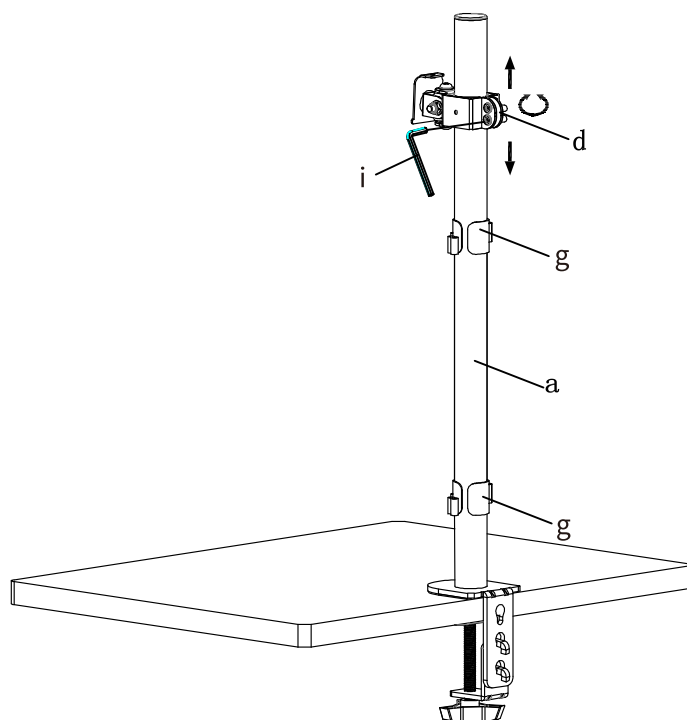
1. Connect grommet support (c) and pole (a) with 3 pieces of M5x18 (f) and tighten it with wrench (i) (figure 1). Insert grommet support (c) into desk hole whose diameter is over 1.65in/42mm (figure 2).

3. Connect grommet (b) and grommet support (c) with pre-positioned screws and choose proper hole site according to the thickness of desk (figure 3). Tighten the plastic knob to fix the clamp (figure 4).

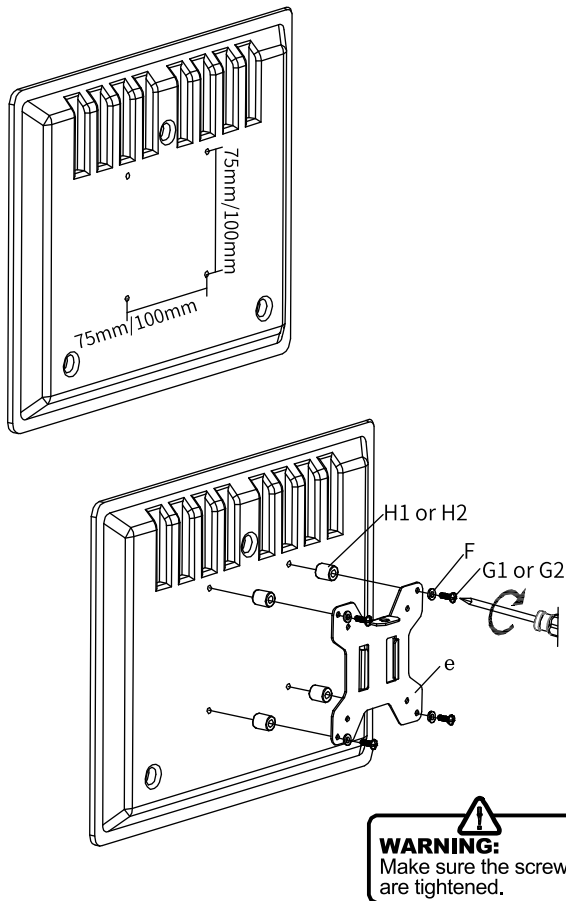


Step 2 Connect Head Sleeve and Pole

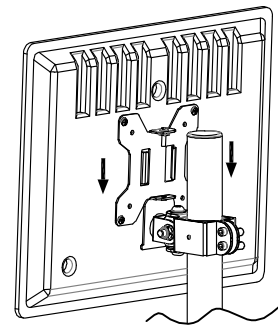
1. Place wire clip (g) on pole (a).
2. Place head sleeve (d) on pole (a). Tighten with wrench (i) at proper position.



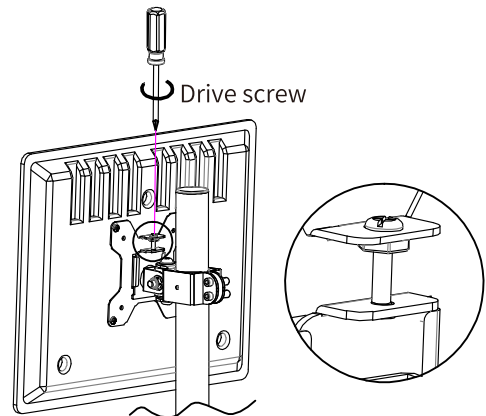
Step 3 Connect VESA Plate and Monitor



Step 4 Connect Monitor and Mount

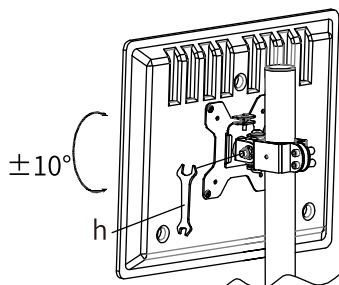


Insert monitor into head sleeve

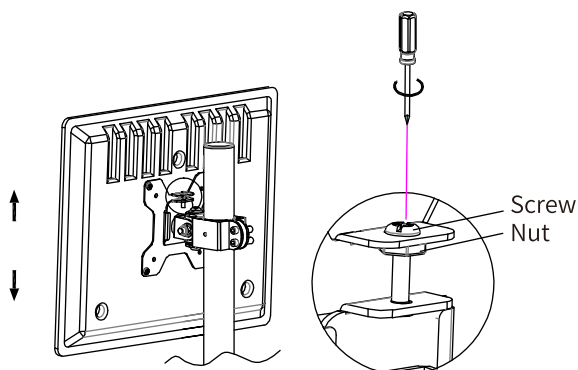


Drive screw pre-positioned in plate into screw hole in head sleeve

Step 5 Angle Adjustment of Head Sleeve

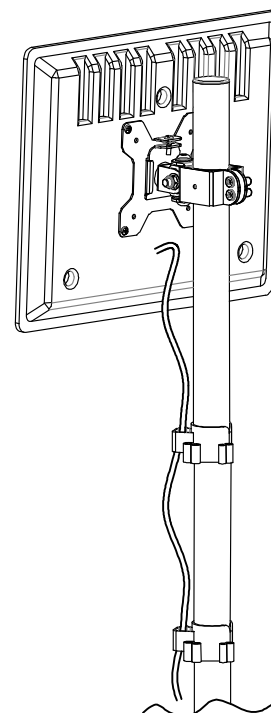


Adjust head sleeve according to the needs in case of sagging of monitor.



To adjust height of monitor, tighten or loosen the screw, fix plate by tightening nut at proper position.

Step 6 Cable Management



Manage cables in wire clip (g).

we hope you never have the need, but if you do, our service is friendly and hassle-free.

✉ :after-sales@bracketwiser.com