

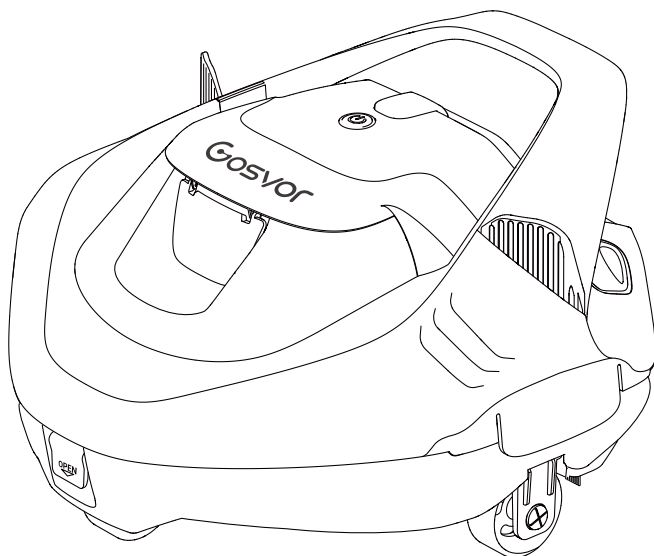
EN

Gosvor®

ROBOTIC POOL CLEANER

User Manual

Gosvor Aura



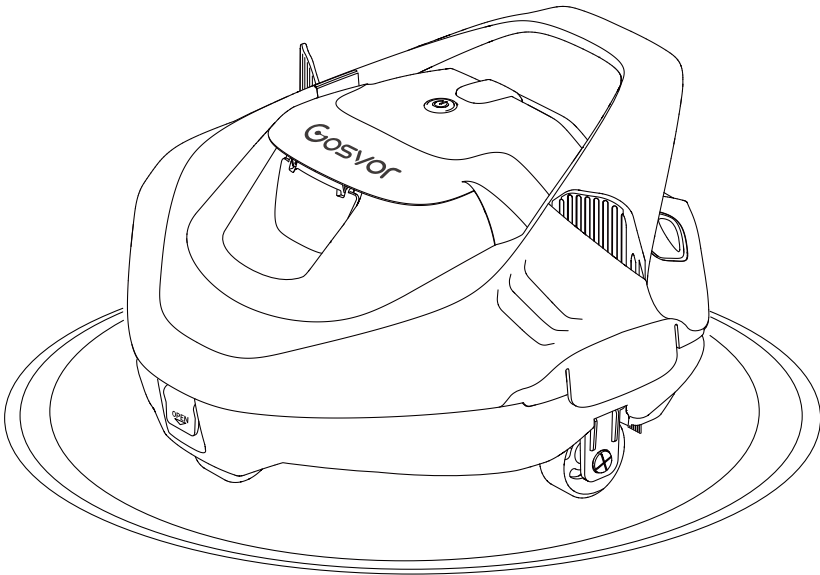
This user manual will help you maintain your Gosvor Aura and ensure it performs at its maximum efficiency for years to come. Please take a few moments to read through.

If you have any questions, please visit our website at www.Gosvor.com and contact our customer service team for assistance or more information.

Gosvor Customer Service:

US Toll Free: (866) 866-8806

Email: service@gosvor.com



CONTENTS

Important Safety Precautions ----- 1

1. Structure ----- 3

2. Specifications & Working Conditions ----- 4

3. Using Your Gosvor Pool Cleaner ----- 5

4. Cleaning the Filter Tray ----- 10

5. Maintenance & Storage ----- 11

6. Light Indicator ----- 15

7. Packing List ----- 15

8. Warranty ----- 16

Important Safety Precautions

Read this manual carefully and use your device in accordance with the instructions. Gosvor is not liable for any damages or injuries caused by improper use.

Please strictly follow the instructions below.

1. Do not operate the device when people or animals are in the pool.
2. Ensure the device is turned off when conducting maintenance, cleaning, or when not in use.
3. Do not allow children to ride the device or play operate it without adult supervision.
4. Only use the original, authorized power adapter.
5. The adapter cord should only be replaced by a qualified electrician.
6. It is strongly recommended to connect the charger to a surge protector when charging.
7. Ensure the charging port is completely dry before charging your device.
8. While charging, the device should be kept in a cool, well-ventilated place. Customers should not over the device while charging as this may lead to overheating or hardware malfunctions.
9. Do not operate the device out of the water, as this may lead to hardware malfunctions or overheating.
10. Only certified professionals should disassemble the (driving kit) of the device.
11. Do not operate the device while running your pool filter.
12. Avoid puncturing the oil sealing of the motor, as this contains grease. If punctured, this may cause a small grease leakage into your pool.
13. Do not store or use the device near anything that generates extreme heat.
14. Do not pierce or bludgeon the device's shell, as this will cause irreparable damage. Additionally, the device should not be thrown.

KEEP THESE PRECAUTIONS

FCC Statement

Note: This equipment has been tested and found to comply with the limits according to Part 15 of the FCC Rules of a Class B digital device. These limits are designed to provide reasonable protection against harmful interference in a residential installation. This equipment generates, uses, and can radiate radio frequency energy and, if not installed and used in accordance with the instructions, may cause harmful interference to radio communications or persons. However, there is no guarantee that interference will not occur in a particular installation. If this equipment does cause harmful interference to radio or television reception, the user is encouraged to try to correct the interference by one or more of the following measures:

- Reorientate or relocate the receiving antenna.
- Increase the separation between the equipment and receiver.
- Plug the equipment into an outlet on a circuit different from that to which the receiver is connected.
- Consult the manufacturer or an experienced radio/TV technician for help.
- Please note that changes or modifications of this product are not expressly approved by the party responsible for compliance (Gosvor), and unauthorized modifications could void the user's authority to operate the equipment.

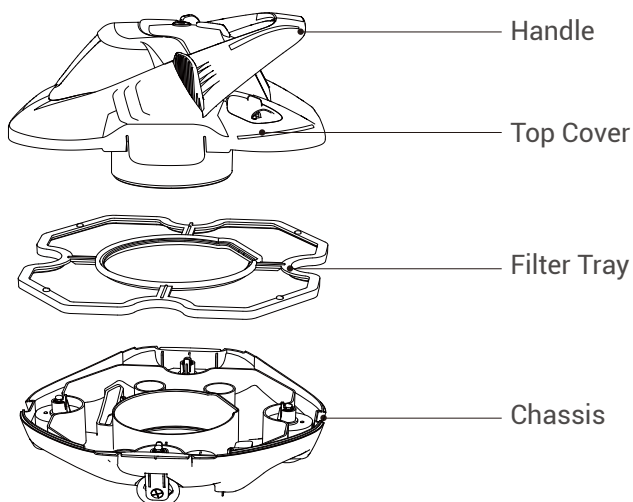
Compliance Declaration

This device complies with Part 15 of the FCC Rules. Operation is subject to the following two conditions: (1) this device may not cause harmful interference, and (2) this device must accept any interference received, including interference that may cause undesired operation.

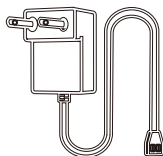
Telephone: (866) 866-8806

Please read this user manual carefully before using it.

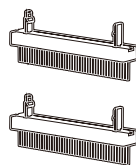
1. Structure



Retrieval Hook



Charger



Brushes

2. Specifications & Working Conditions

1. Pool Size: 850 sq.ft/80m² Compatible with Flat Floor Pools
2. Charger Input: 100~240V, 50/60Hz
3. Charger Output: 12.6V/1.8A
4. Charging Time: 2.5 Hours
5. Battery Life: Up to 90 Minutes
6. IP Grade: IPX8 Waterproof
7. Max Water Depth: 10ft (3m)

PRECAUTIONS:

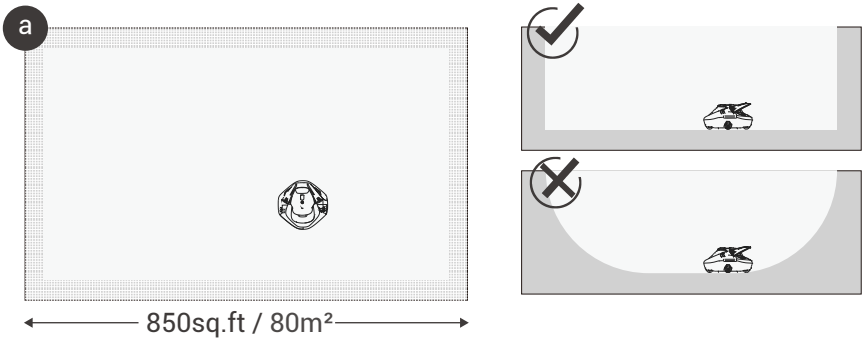
For optimal performance, Gosvor recommends using your device in the following water conditions.

• Temperature: 50-95°F (10-35°C)
• pH Value: 7.0-7.4
• Chlorine: Maximum 4 ppm
• NaCl: Maximum 5000 ppm

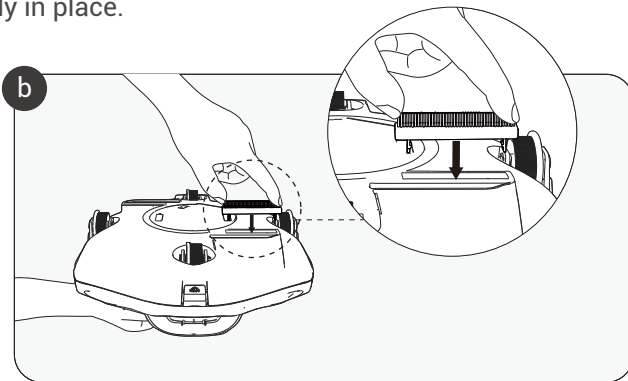
3. Using Your Gosvor Pool Cleaner

3.1 Using Steps

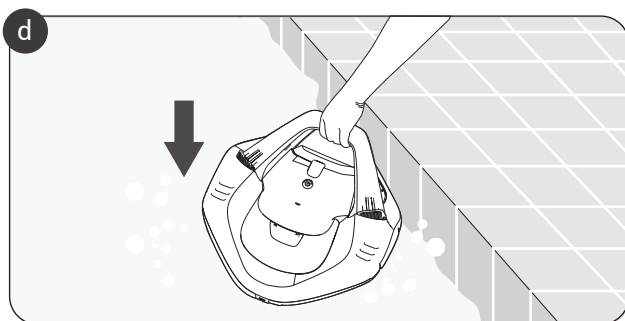
- a. The Gosvor Aura was designed to clean swimming pools that have flat floors and no slopes up to 850 sq.ft/80m².



- b. Tightly insert the two included brushes into the slots at the bottom of your Gosvor Aura. You will hear a clicking sound when the brushes are correctly in place.



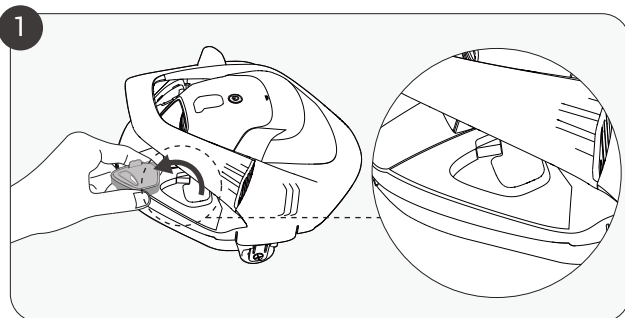
- c. Customers should place/remove the device into/from the pool with the bottom of the device facing the wall to avoid damaging or scratching the shell of the device or your pool's wall.
- d. Power off the device after each use.

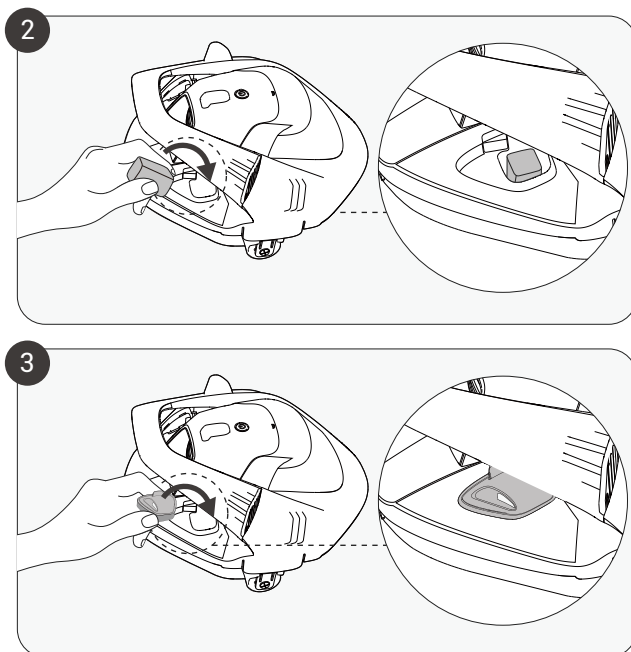


Optional:

Open the rear of the machine to install the chemical dispenser.

1. Open the shell.
2. Insert the one-inch tablet. (Tablets not provided)
3. Close the shell.

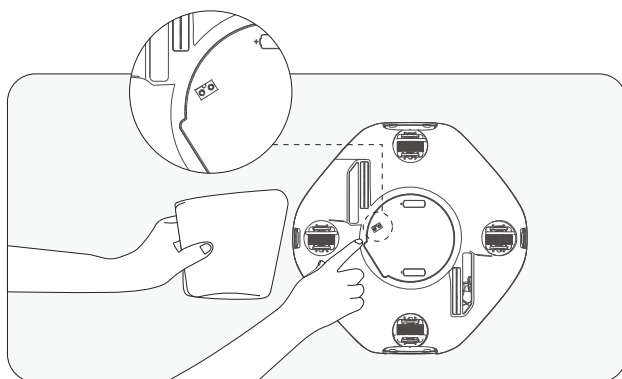




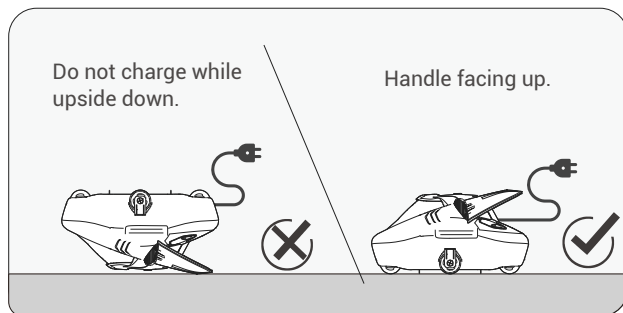
3.2 Charging

Fully charge the device before each use.

- Power off the device before charging.
- Dry the charging port before charging.



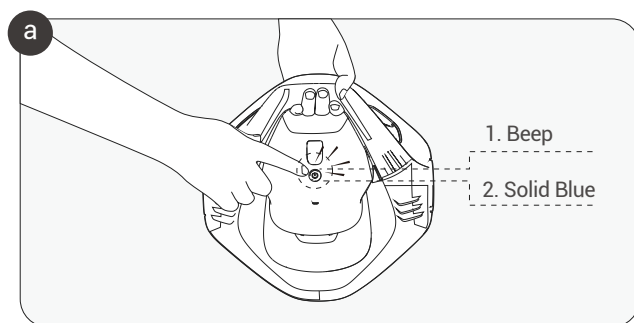
- When charging, do not leave the machine upside down.



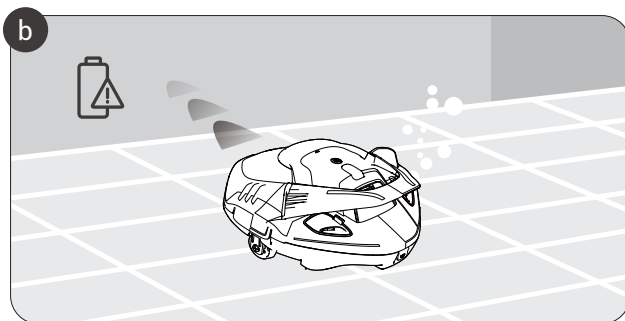
- Battery Charging: The LED indicator will produce a blue flashing light.
- Battery Fully Charged: The LED indicator will produce a solid blue light.

3.3 Working

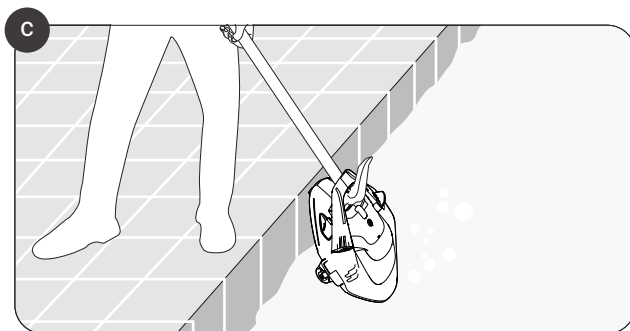
- Press and hold the power button until the blue indicator light stays on and the Gosvor Aura beeps. Place your Gosvor Aura into the water for 30 seconds. Your Gosvor Aura will begin working within five seconds of reaching your pool floor.



- b. When the battery is low, the LED indicator will produce a slow flashing red light before stopping near your pool's wall. The light will flash for 60 seconds before the device powers off.

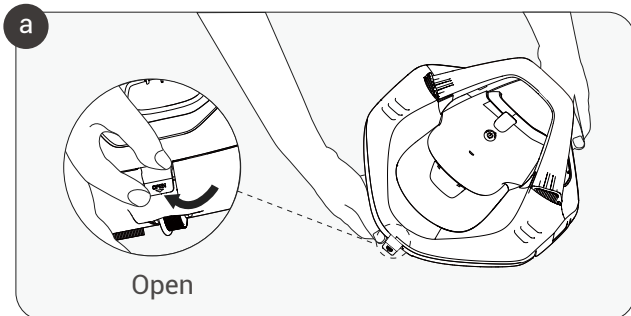


- c. Attach the included hook onto your pool pole and lift the device out of the water.

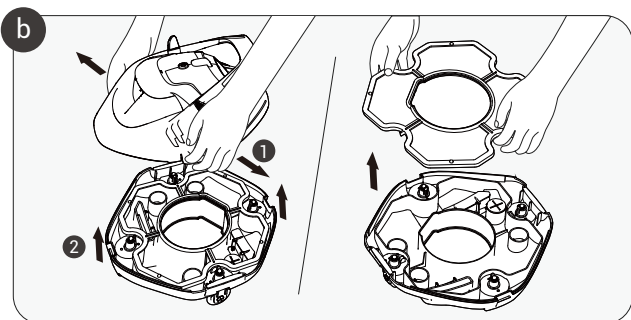


4. Cleaning the Filter Tray

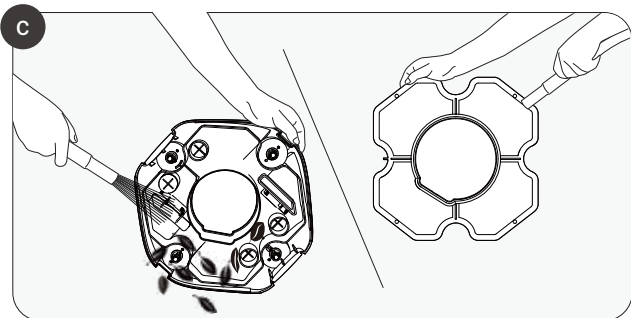
- a. Lift the two smaller buckles on the front and back of the device, then open the two buckles at the side of the device.



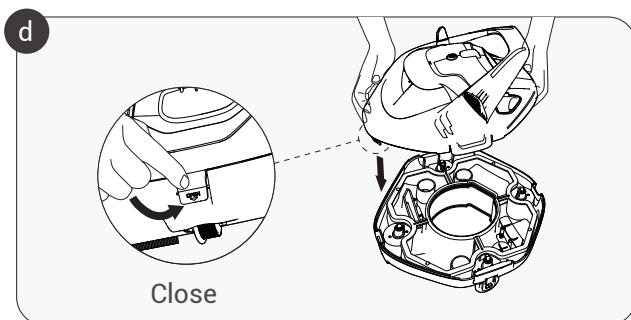
- b. Gently pull the sides of the shell outward before lifting the Gosvor Aura's shell up to access the filter tray.



- c. Remove the tray and dump the collected debris from the bottom of the Gosvor Aura's shell, then wash the shell and filter tray with water.

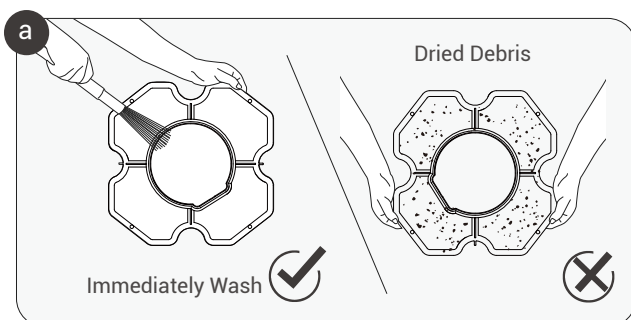


- d. After cleaning your Gosvor Aura, replace the filter tray and secure the shell using the buckles.



5. Maintenance & Storage

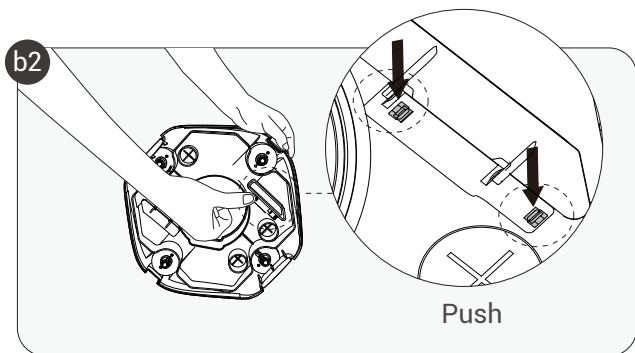
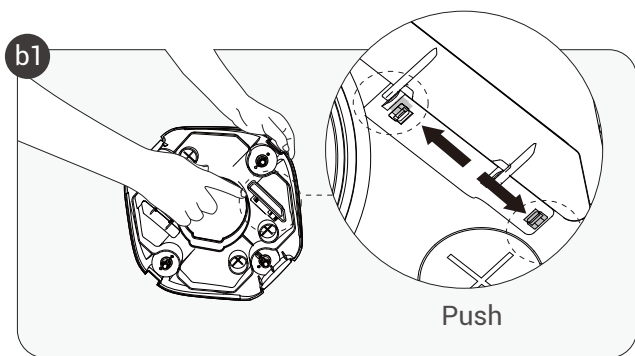
- a. Always wash the filter tray immediately after use. Dried debris may cause blockage and affect performance if debris is not washed and removed in a timely manner.



b. Brush Replacement.

If a brush becomes worn out, follow the steps below.

1. Remove the top cover of the device to expose the brushes.
2. Using your fingers or a small tool, press the two small locking bars according to the image below.

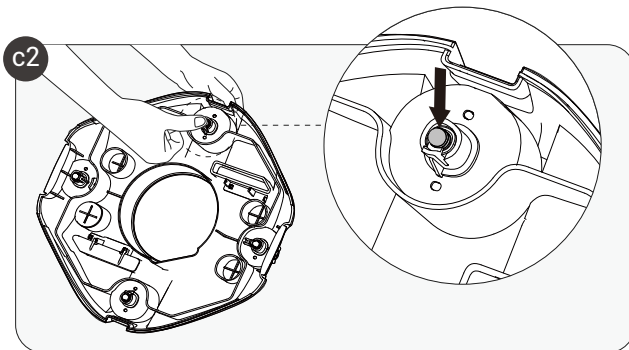
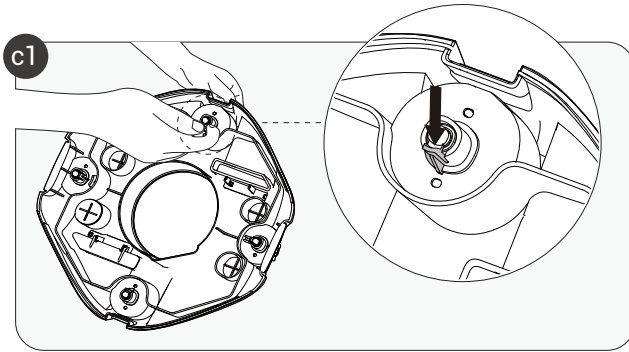


3. Insert your new brush into the slot through the bottom of the device. Replacement brushes are not included with your original purchase.
4. Insert a new brush into the bottom slot of the cleaner. (Replacement brushes are not included)

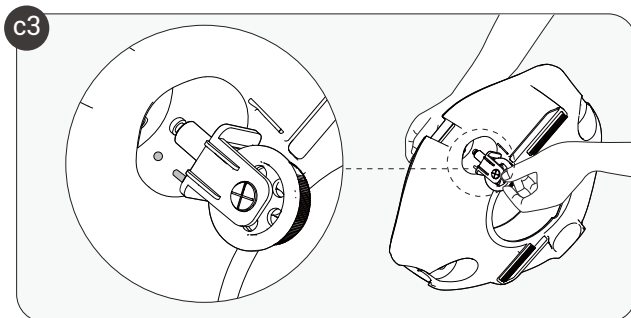
c. Wheel Replacement

If one of your Gosvor Aura's wheels breaks, follow the steps below.

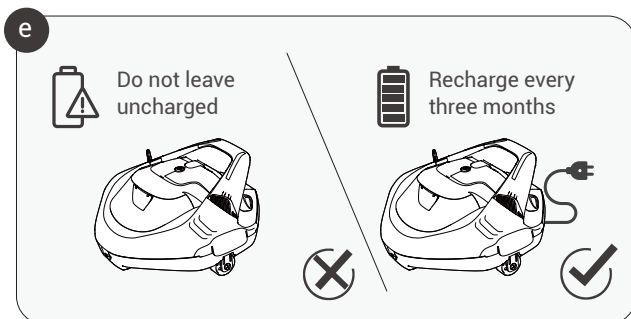
1. Remove the top shell of the device to expose the wheels.
2. Using a finger or small tool to push the wheel's buckle till it bends and then push down to pop the wheel out.



3. Insert the spare wheel from the bottom of the device by aligning it with the two small holes on the wheelbase, and twist or press if necessary until you hear a clicking sound. The wheel should now be locked into place.



- d. The Gosvor Aura should be stored in a cool, well-ventilated place away from direct sunlight.
- e. If you need to store the Gosvor Aura for a prolonged period, we recommend you charge it every three months between 40%-60% to maintain battery health. Only use an authorized power adapter. If your Gosvor Aura is not charged for a long time, battery discharge and battery voltage may act in unintended ways which could cause fatal damage.



6. Light Indicator

NO.	Working Status	Light Indicator
1	Power ON/Battery Level	Solid Blue Light/Blue Numbers
2	Power OFF	No Lights
3	Turned On (Cleaning)	Solid White Light
4	Charging	Slow Flashing Blue Light
5	Fully Charged	Solid Blue Light
6	Low Battery	Slow Flashing Red Light
7	Rotor Blocked	Red and Green Flashing Lights
8	Water Flooding	Red and Blue Flashing Lights
9	Power Failure	Rapid Blue lights

7. Packing List

NO.	Name	Model	QTY(pc)
1	Cleaner	Gosvor Aura	1
2	Charger		1
3	Retrieval Hook		1
4	User Manual		1
5	Brushes		2
6	Spare Wheels		2

8. Warranty

This product has passed quality control and safety test conducted by our technicians.

1. This product comes with a 12-month warranty that covers your item's battery and motor from the date of purchase.
2. This warranty is voided if the product has been altered, misused, or has been repaired by unauthorized persons.
3. This warranty extends only to manufacturing defects and does not cover damage resulting from the mishandling of the product by the owner.
4. The order number or record of purchase must be presented at the request of any repair claim during the warranty period.



Gosvor®

www.Gosvor.com