

# How Can I Put Tapo Door/Window Sensor in Pairing Mode?

1. Remove the cover.

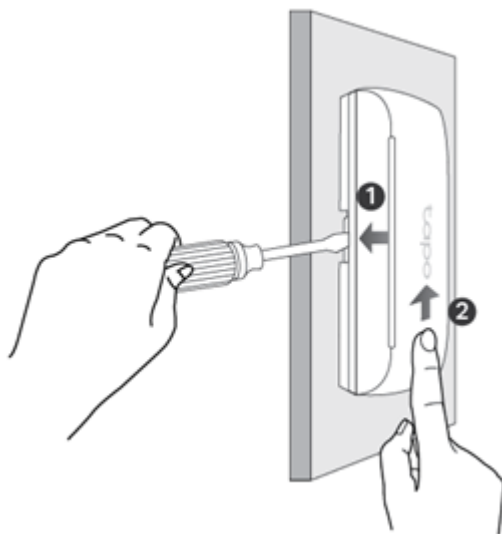
1) If you **haven't** installed it on a door or window:

Use a screwdriver to pull up the clip. Slide the cover down with the other hand.



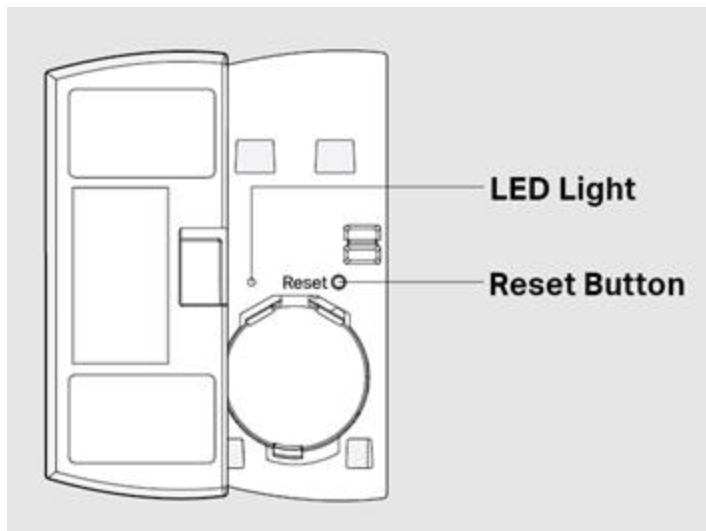
2) If you **have** installed it on a door or window:

Remove the cover of your sensor by pushing the cover up.



2. Unscrew the screw securing the battery and **remove the battery insulation tab** to power up your sensor if you use it for the first time.

3. Use a pin to press and hold the Reset button for **5** seconds until the LED starts blinking.



4. Open the Tapo app, tap + on the upper right corner, and follow app instructions to complete pairing; or press the SYNC button on your Tapo hub to start pairing. After pairing is complete, you can find your device on the home page of the Tapo app.

## How to Replace the Battery for Tapo Door/Window Sensor

F

1. Remove the cover.

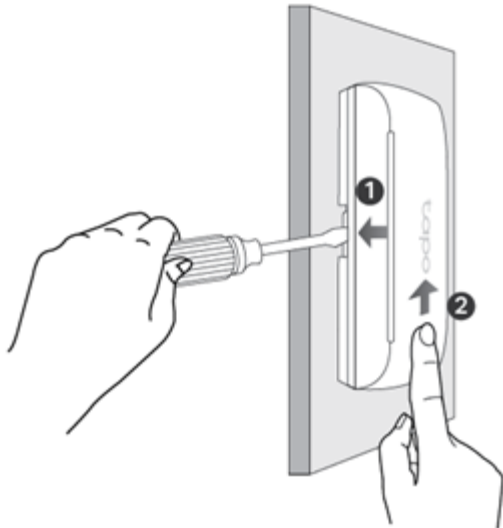
1) If you **haven't** installed it on a door or window:

Use a screwdriver to pull up the clip. Slide the cover down with the other hand.



2) If you **have** installed it on a door or window:

Remove the cover of your sensor by pushing the cover-up.



2. Unscrew the screw securing the battery and remove the old battery.
3. Insert the new battery into the battery compartment, making sure the battery is level and its positive side is facing up.
4. Replace the cover by sliding the cover down.



## How to Check Activities of Sensors and Buttons

### Method 1:

1. Open the **Tapo** app and tap your device card on the home page to enter the status page.
2. On the status page, you can check all activities of your device.

### Method 2:

Open the **Tapo** app and tap the email icon on the top right to check all activities of your device.

