

# Hard drive installation instructions for Predator Helios 300 laptops

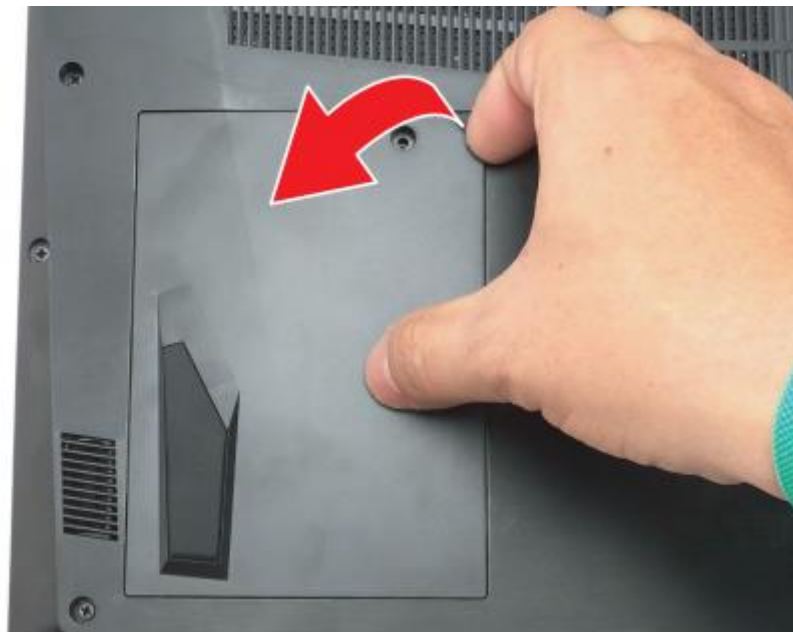
**This article only applies to: Predator G3-571, G3-572, G3-573 and PH317 models.**

The Predator Helios includes a storage bay that allows for installation of a secondary 2.5" hard drive or solid state drive. If your system does not include the hard drive caddy for installing a second drive, please [contact Acer support](#).

Use the steps below to install a secondary drive in your system.

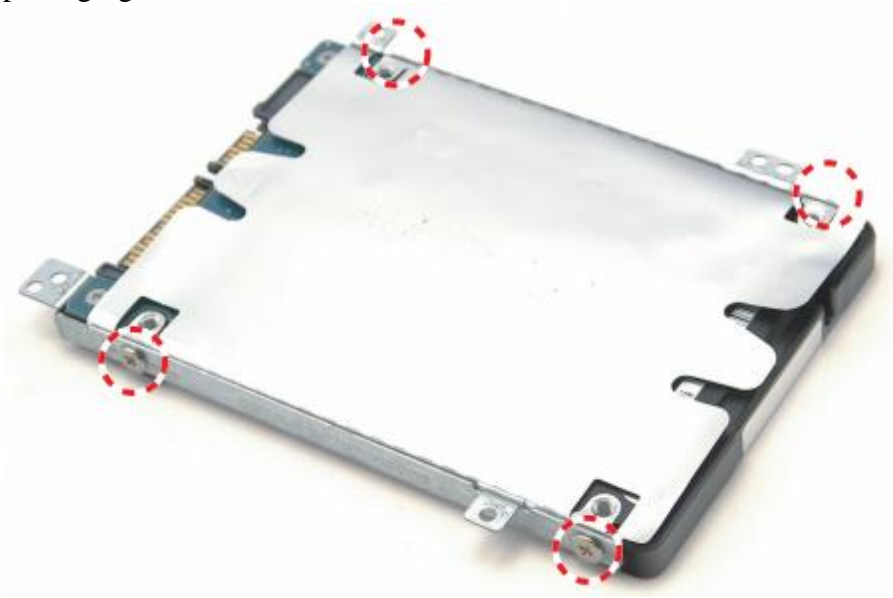
**Note:** Acer recommends use of an anti-static wrist strap when adding hardware to your system.

1. Remove the AC adapter and make sure your system is completely powered off.
2. Remove the screw securing the hard drive door to the lower case, and remove the door by lifting at the cut corner.

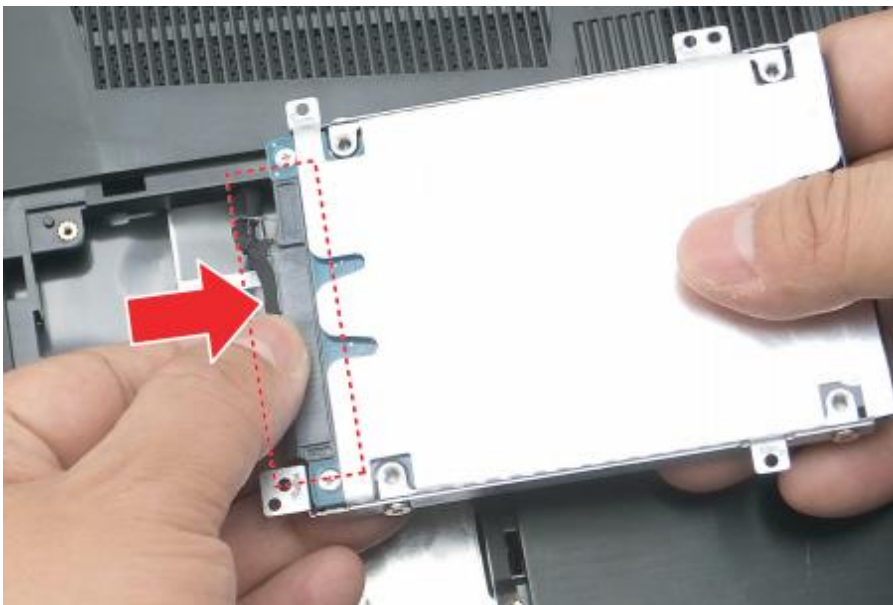


3. Check to see if there is a hard drive caddy in the drive bay. Continue to the next step if the hard drive caddy is in the bay. If there is no caddy in the drive bay, skip to the [Extended installation instructions](#) section at the bottom of this article.

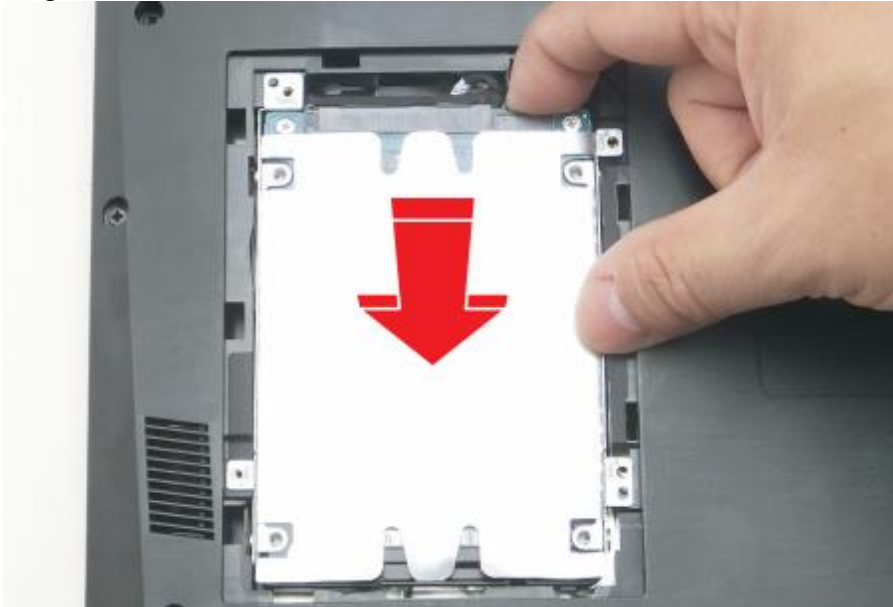
4. Install the new hard drive in the hard drive module using the four screws included in the packaging.



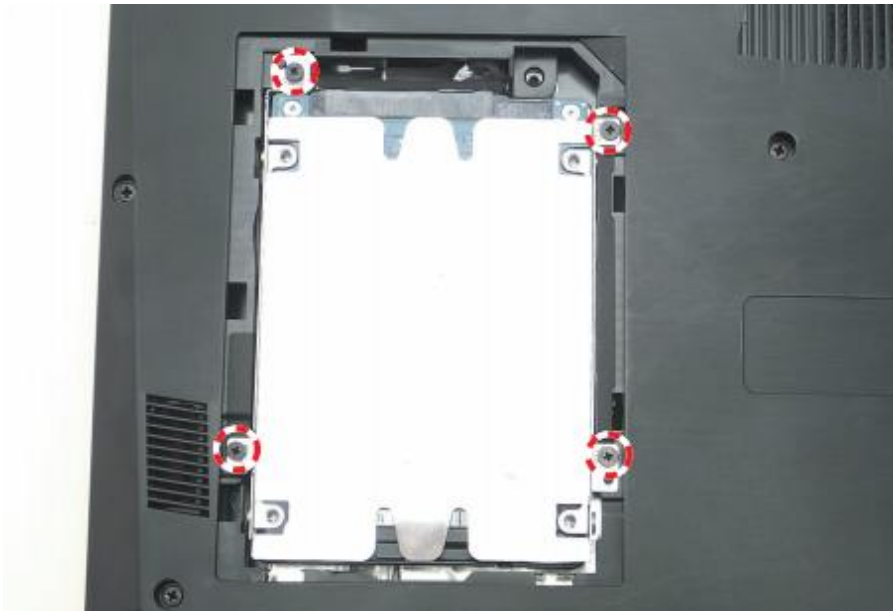
5. Connect the hard drive cable to the new hard drive.



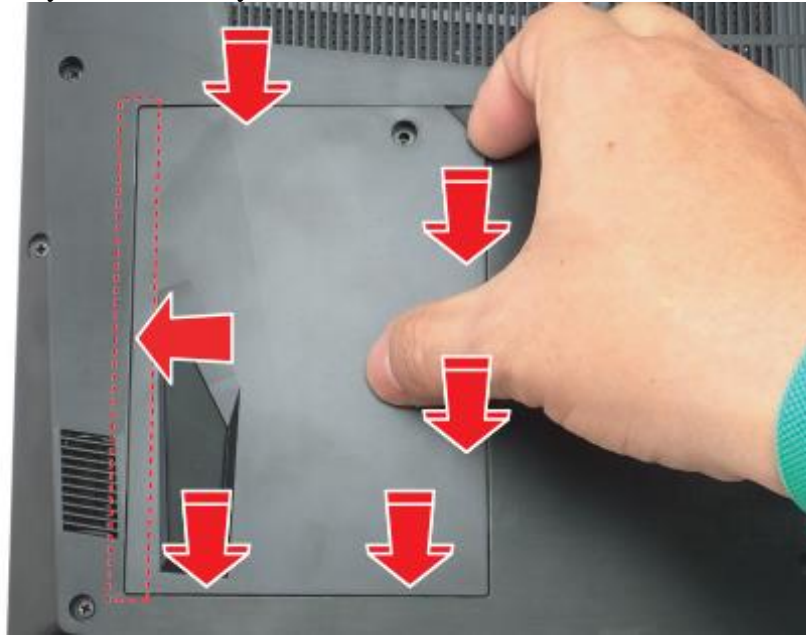
6. Align and install the hard drive module into its slot on the lower case.



7. Attach the four screws to secure the hard drive module to the lower case.



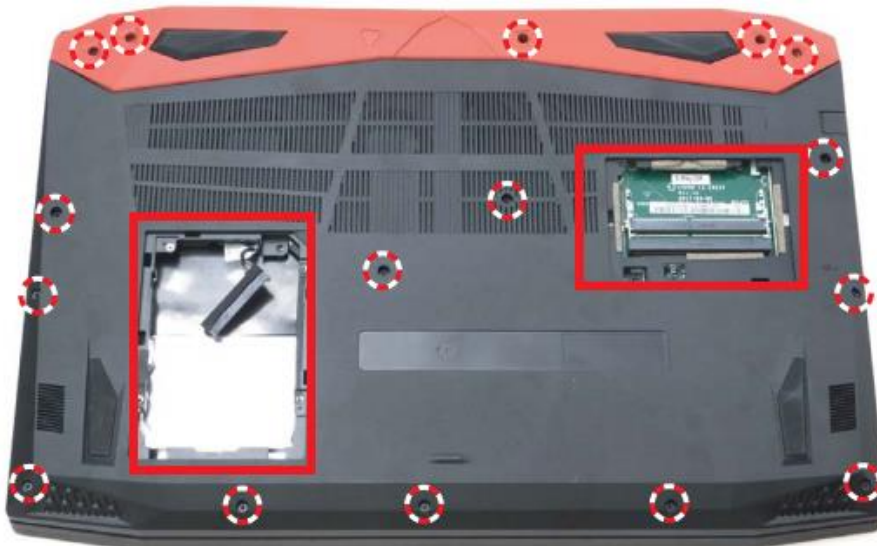
8. Align the hard drive door latches in the slots on the lower case and press the hard drive door firmly until it is fully seated.



9. Secure the hard drive door with the screw you removed in step one.

**Extended installation instructions - For models that require installation of a hard drive cable to connect a second drive.**

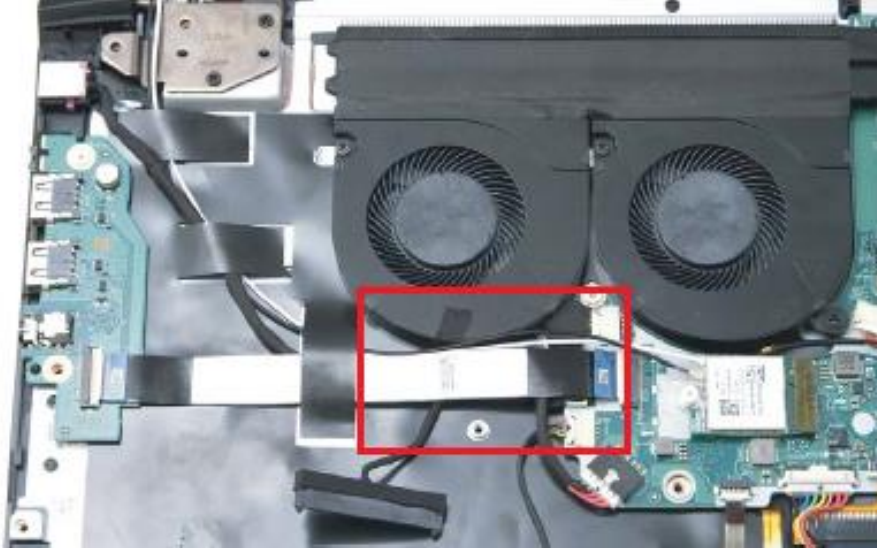
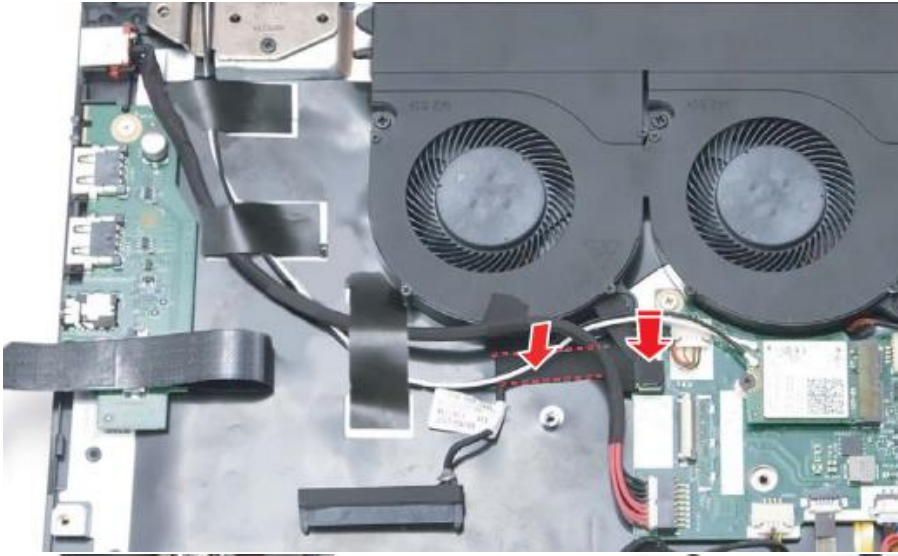
1. Remove the hard drive and memory access panels (shown in the red rectangles below), then remove the 15 screws that secure the lower case.



2. Insert a plastic pry tool on the left side, and work your way around the lower case to release the clips holding it in place. Completely remove the lower case when all of the clips have been released.

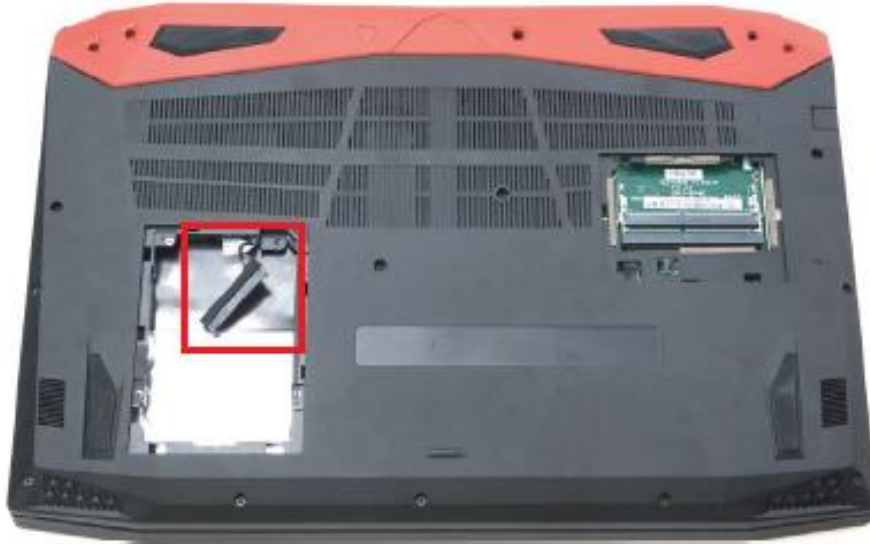


3. Locate the Hard drive cable connector on the mainboard, and install the hard drive cable as shown in the images below. We recommend routing the hard drive cable under the other cables as shown in the second image.

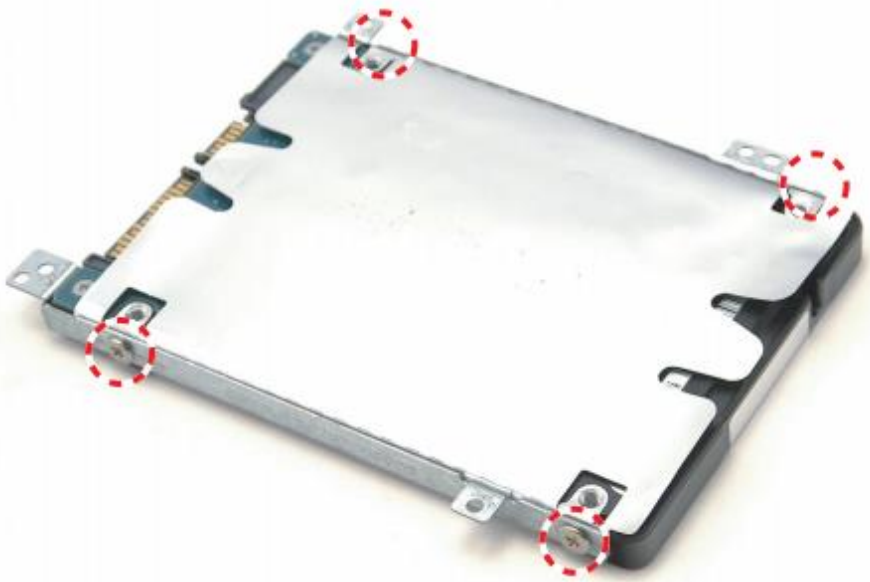




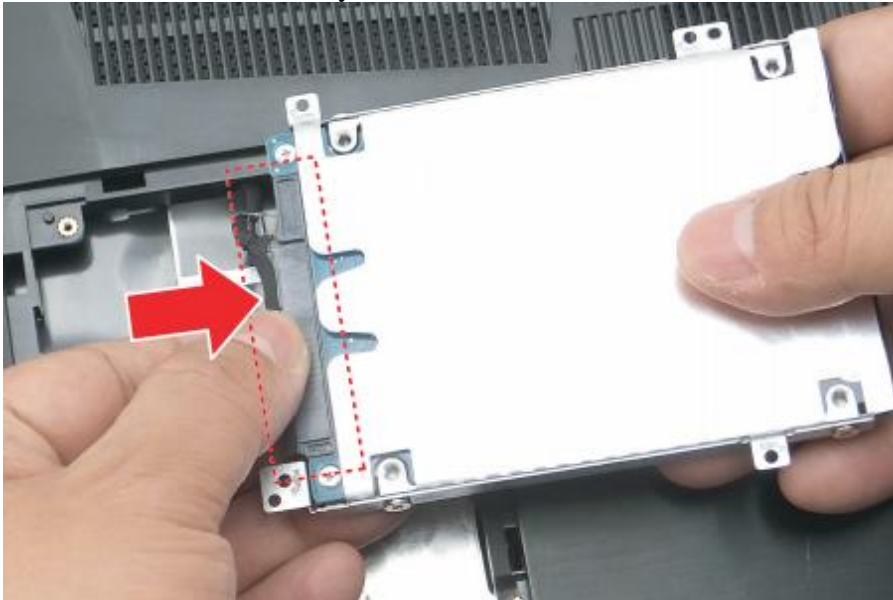
4. Reinstall the lowercase. Make sure the HDD cable that you will be connecting the new HDD or SSD to is accessible with the lower case installed.



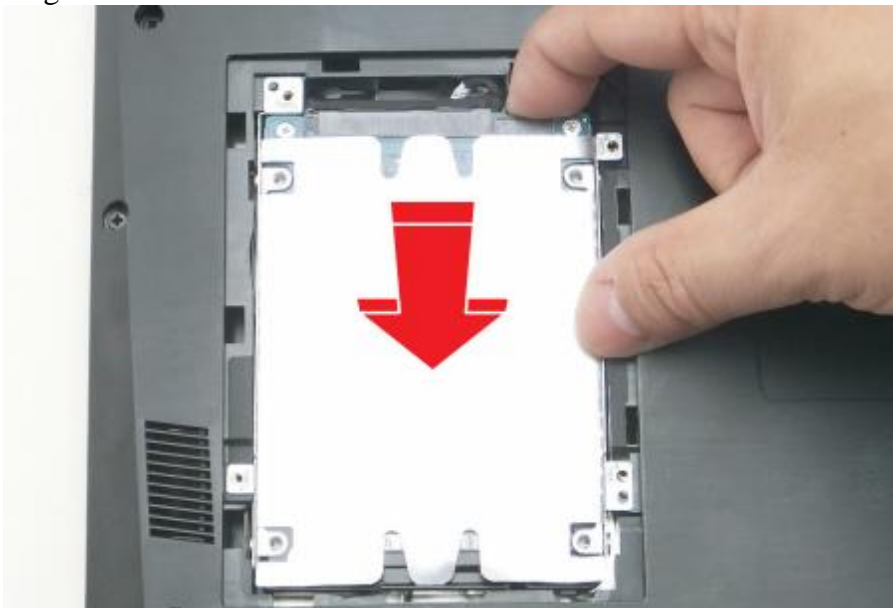
5. Secure the 15 screws you removed in step 1.
6. Install the new hard drive in the hard drive module using the four screws included in the packaging.



7. Connect the hard drive cable to the new hard drive. We recommend routing the HDD cable underneath the newly installed hard drive.

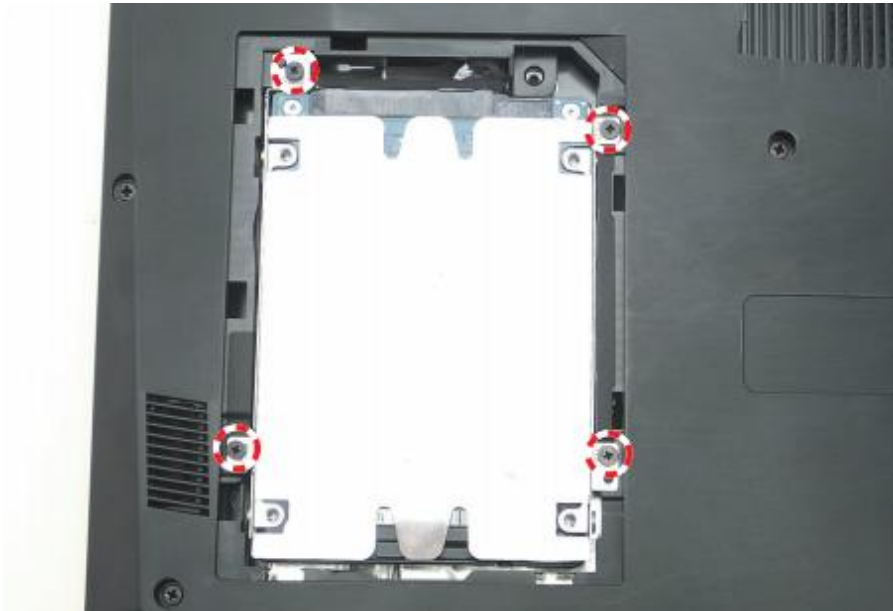


8. Align and install the hard drive module into its slot on the lower case.

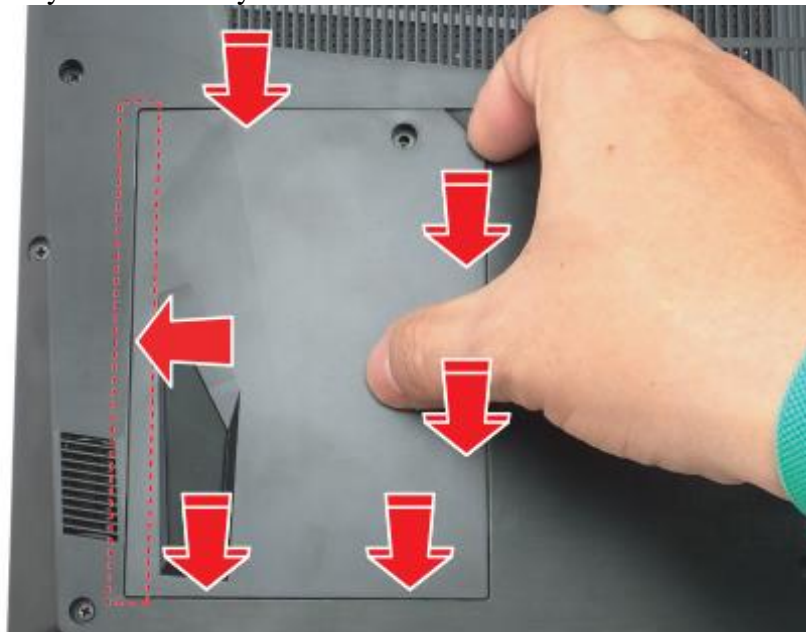




9. Attach the four screws to secure the hard drive module to the lower case.



10. Align the hard drive door latches in the slots on the lower case and press the hard drive door firmly until it is fully seated.



11. Secure the hard drive door.