

## Features

- Compact Design
- Preset Limit Switches
- Hall Effect Sensors
- Input Voltage 24VDC
- Stroke 100mm
- IP42
- Duty Cycle 10%

## RS PRO Linear Actuators

RS Stock No.: 177-4514



RS PRO is the own brand of RS. The RS PRO Seal of Approval is your assurance of professional quality, a guarantee that every part is rigorously tested, inspected, and audited against demanding standards. Making RS PRO the Smart Choice for our customers.

## Product Description

FD60 is a quiet and powerful actuator up to 6000N thrust, designed for use in furniture applications.

Main Application: Furniture

## General Specifications

Actuator Type	ACME Screw
Motor Technology	DC Motor
Control	S - Limit Switch H - Hall Effect Sensor
Series	FD60
Colour	Black & Silver
Duty Cycle	10% or 2 min of continuous operation in 20 min.
Housing	Plastic moldings, aluminum cover tube

## Electrical Specifications

Input Voltage	24VDC
Current No Load	0.6A at 24VDC
Current Full Load	2.7A at 24VDC
Motor Power	64W
Maximum Acceleration	N/A
Maximum Load	6000N Push/Pull
Maximum Speed No Load	4.2mm/s
Maximum Speed Full Load	2.9mm/s
No Load Torque	N/A
Maximum Force Lifting	6000N
Noise Level	≤ 50dB
Motor	Permanent magnet motor 24V DC/ 2500rpm
Connection	Black PVC with molded F type 6 pin Din plug
Positioning Feedback	Hall effect sensor

## Mechanical Specifications

Maximum Stroke Length	100mm
Brake	N/A
Spindle Type	8mm pitch
Gear Ratio	N/A
Front Connector	Drilled Hole, 10mm
Rear Connector	Drilled Hole, 10mm
Clevis Ends	Yes
Screw	ACME screw
Overall Length Closed	320mm
Weight	1.84Kg or 1840g
Ambient Operation Temperature	-20°C to 65°C
Storage Temperature	-20°C to 65°C
IP Rating	IP42

## Approvals

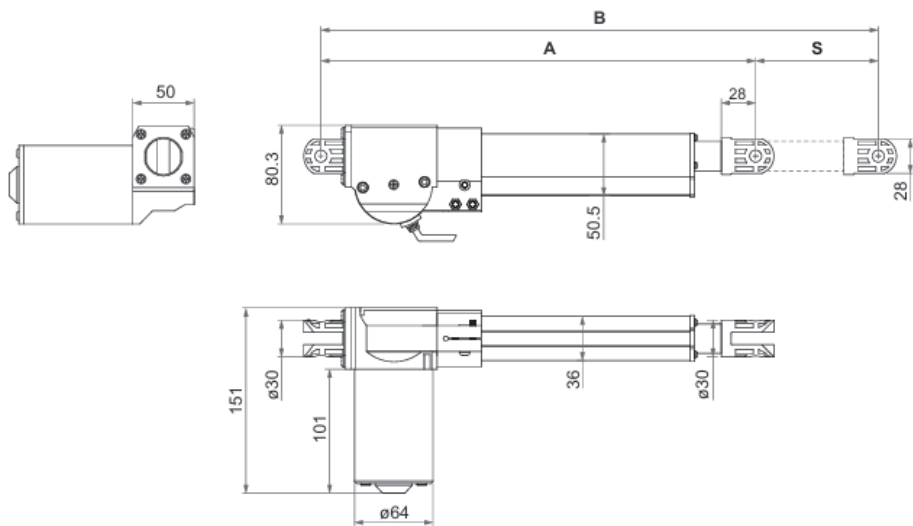
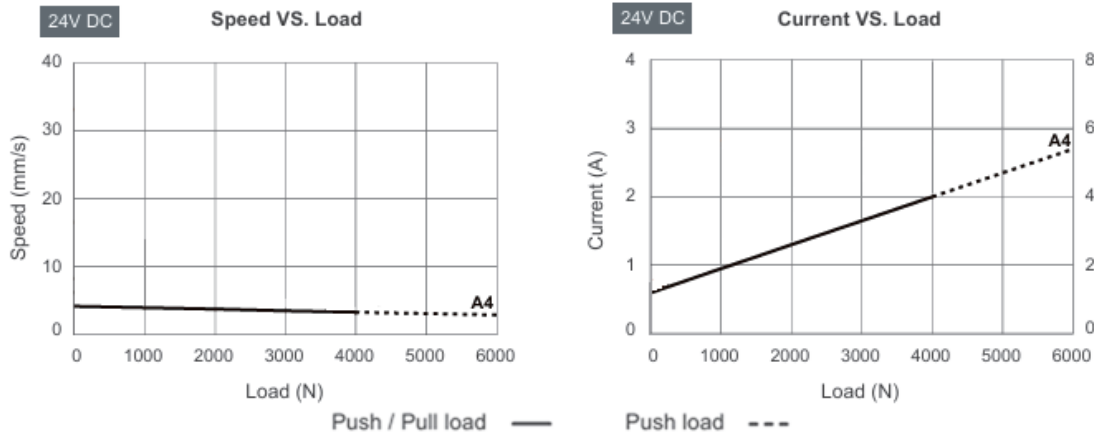
Compliance/Certifications	CE / EN55014-1:2017+A11:2020
Declarations	EN 55014-2:2015

## Accessories

Accessory	RS PRO Product Number
Controller	1774523
	

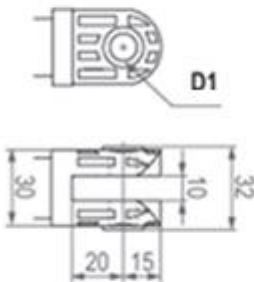
Accessory	RS PRO Product Number
Handset	1774527
	

Other Specifications



A	288mm
B	388mm

• Front connector



• Rear connector



Front Connector Material	Diameter of pivot without bushing (D1)	Slot Width (W)
Zinc Alloy	ø10	10mm
Rear Connector Material	Diameter of pivot without bushing	Slot Width
Zinc Alloy	ø10	10mm

F type 6 Pin DIN Plug Pin Out  
Positioning feedback with dual Hall effect sensors

