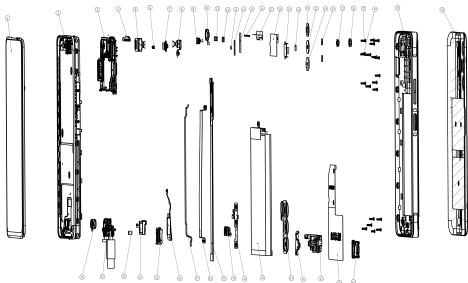


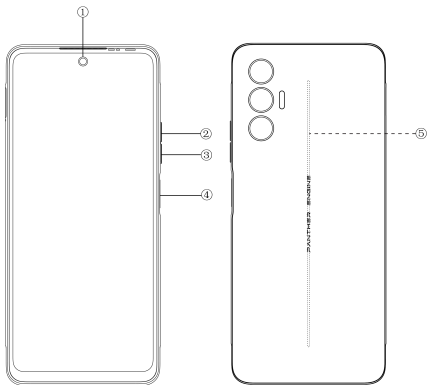
Explosion diagram specification



1	CTP+LCM 6.95FHD	2	F HSG ASM
3	PCBA MB	4	MAIN WATERPROOF FRAME ASM
5	CAM AF 50M	6	PS RUBBER
7	CAM FF 2M	8	CAM FF 8M
9	CAM FF 8W	10	F CAM FRAME ASM
11	LCM CONN WATERPROOF RUBBER	12	BAT CONN WATERPROOF RUBBER
13	SCREW SEAL MYLAR	14	UP SPK CON COP FOIL
15	F CAM COP FOIL	16	REC DECO PART
17	MAIN WATERPROOF MYLAR	18	MAIN RADIATING FILM
19	R MAIN CAM CON FOAMS	20	MAIN SHIELD COP FOIL
21	R MAIN CAM LENS	22	R VICE CAM LENS
23	R VICE CAM LENS	24	R VICE CAM CON FOAMS
25	R CAM RUBBER 8W	26	R VICE CAM RUBBER 2M
27	MC SCREW L3.5	28	MC SCREW L2.5
29	MI HOUSING	30	BAT COVER ASM
31	MOTOR LINEAR	32	PCBA SUB
33	FPC ESD POAM	34	SPK
35	EARPHONE RUBBER	36	FM
37	COAXIAL CABLE	38	FPC MAIN
39	FPC BAT COVER RGB LIGHT	40	USB RUBBER
41	FPC SIDE KEY	42	BAT
43	R CAM DECO ASM	44	CAM LOCATION FRAME ASM

45	DOWN FRAME ASM	46	BAT COVER RADIATING FILM
47	CARD HOLDER		

Know your phone



1. Front camera
2. Volume + key
3. Volume - key
4. Power key
5. Breathing Light

SIM/SD card installation

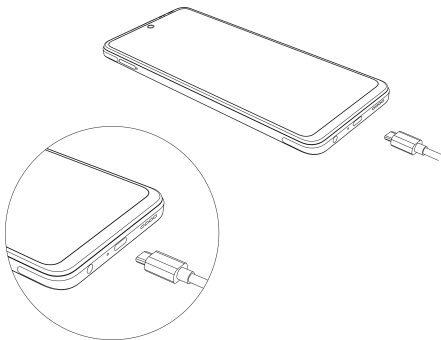
1. Power off mobile.
2. Refer to the following picture for SIM / SD card installation.



Charging the phone

You can charge your device using a charger or by connecting it to the computer using a USB cable (comes with the phone).

Use only TECNO charger and cables. Other chargers or cables may damage the device. This will invalidate your phone warranty.



FCC Caution

Labelling requirements.

This device complies with part 15 of the FCC Rules. Operation is subject to the following two conditions: (1) This device may not cause harmful interference, and (2) this device must accept any interference received, including interference that may cause undesired operation.

Information to user.

Any changes or modifications not expressly approved by the party responsible for compliance could void the user's authority to operate the equipment.

Information to the user.

Note: This equipment has been tested and found to comply with the limits for a Class B digital device, pursuant to part 15 of the FCC Rules. These limits are designed to provide reasonable protection against harmful interference in a residential installation. This equipment generates uses and can radiate radio frequency energy and, if not installed and used in accordance with the instructions, may cause harmful interference to radio communications. However, there is no guarantee that interference will not occur in a particular installation. If this equipment does cause harmful interference to radio or television reception, which can be determined by turning the equipment off and on, the user is encouraged to try to correct the interference by one or more of the following measures:

- Reorient or relocate the receiving antenna.
- Increase the separation between the equipment and receiver.
- Connect the equipment into an outlet on a circuit different from that to which the receiver is connected.
- Consult the dealer or an experienced radio/TV technician for help.

Specific Absorption Rate (SAR) information:

This mobile phone meets the government's requirements for exposure to radio waves. The guidelines are based on standards that were developed by independent scientific organizations through

periodic and thorough evaluation of scientific studies. The standards include a substantial safety margin designed to assure the safety of all persons regardless of age or health.

FCC RF Exposure Information and Statement The SAR limit of USA (FCC) is 1.6 W/kg averaged over one gram of tissue. Device types: LF7(FCC ID: 2ADYY-LF7) has also been tested against this SAR limit. The highest SAR value reported under this standard during product certification for use at the ear is 1.17 W/kg and when properly worn on the body is 0.78 W/kg.

Body-worn Operation

This device was tested for typical body-worn operations. To comply with RF exposure requirements, a minimum separation distance of 1.0 cm must be maintained between the user's body and the handset, including the antenna. Third-party belt-clips, holsters, and similar accessories used by this device should not contain any metallic components. Body-worn accessories that do not meet these requirements may not comply with RF exposure requirements and should be avoided. Use only the supplied or an approved antenna.

TECNO

HiOS runs on Android™ OS.
Android is a trademark of Google LLC.