

Electric Powered

# CALIX FORCED CIRCULATION HEATER



CEPFCH-300124



Calix Forced Circulation Heater (FCH) is a hose mounted engine block heater with an integrated circulation pump that spreads the heat faster and more evenly in the engine, making it more efficient. Additionally, the FCH is easier to install compared to a heater with a separate circulation pump as FCH is more flexible in the positioning of the heater.

## Function

Hose installed heater, designed to pre-heat applications such as coolant circuits. Pump forced circulation (230 V). PTC heating element.

## Applications

Machinery engines

## Features

Integrated circulation pump

Flexible positioning

Self-resetting overheat protection at +120°C

## Benefits

Spreads heat faster and more evenly in the engine

Easier to install due to integrated pump

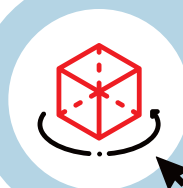


**ARCTIC-FOX®**

**Arctic Fox®**

De Stok 24  
4703 SZ Roosendaal  
The Netherlands  
T. +31 (0)165 55 92 45  
[info@arctic-fox.eu](mailto:info@arctic-fox.eu)  
[www.arctic-fox.eu](http://www.arctic-fox.eu)

**Productivity won't wait for a warm day.**

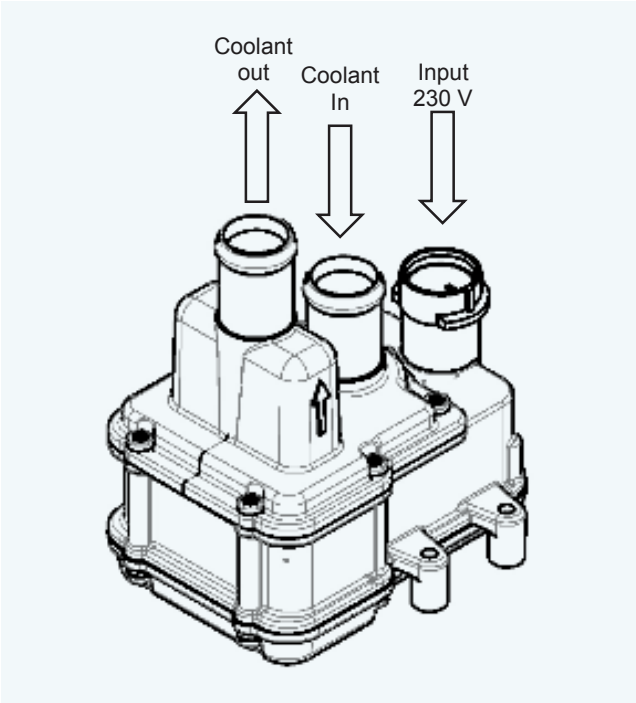
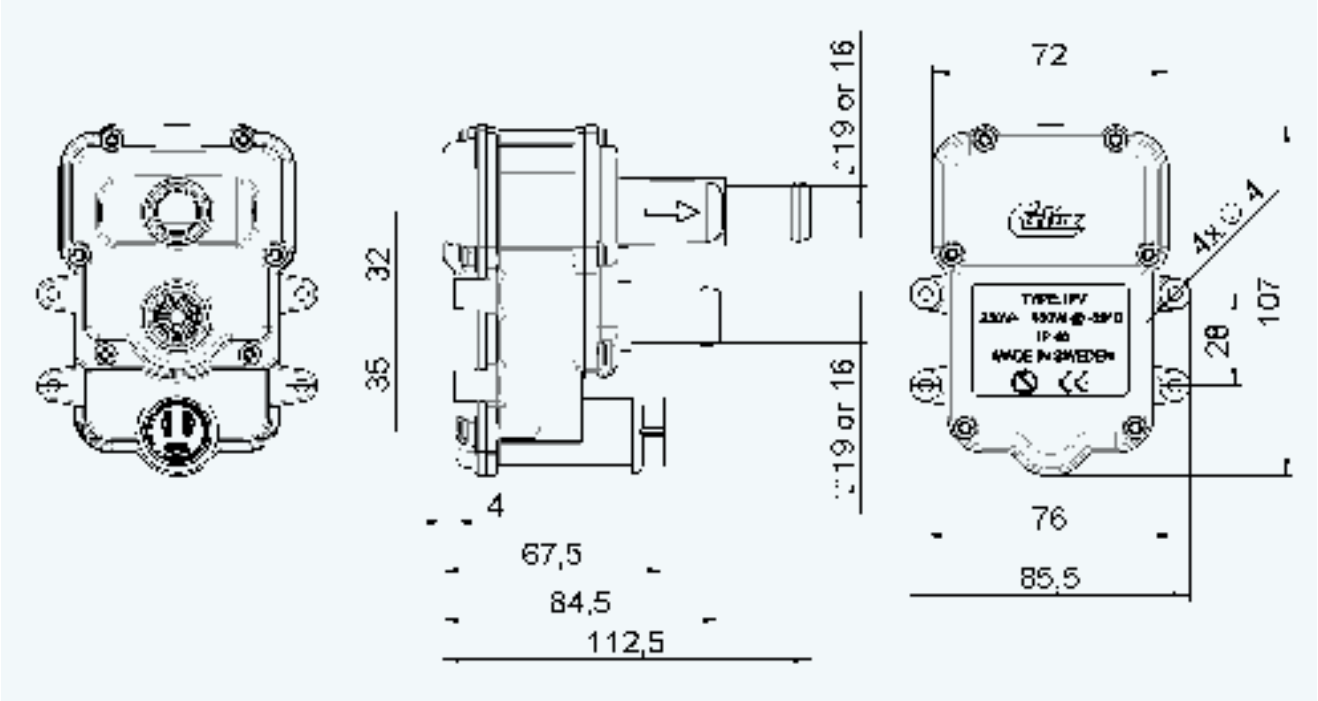


**Using 3D software?  
Try out our models!**

Contact us at [info@arctic-fox.eu](mailto:info@arctic-fox.eu)  
and start engineering.

**Specifications** (dimensions in millimeters)

| Productnumber       | Watts | Volts   | Pump Capacity | Connection Ø | Dimensions L x H x S |
|---------------------|-------|---------|---------------|--------------|----------------------|
| 1710000 FCH Ø16 KIT | 550 W | 230 VAC | ~8 L / min    | 16 mm        | 65 x 90 x 115 mm     |
| 1710010 FCH Ø19 KIT | 550 W | 230 VAC | ~8 L / min    | 19 mm        | 65 x 90 x 115 mm     |



**Need more measurements?** Technical drawings are available on request. Please contact us at [info@arcticfox.eu](mailto:info@arcticfox.eu) or call +31 (0)165 55 92 45