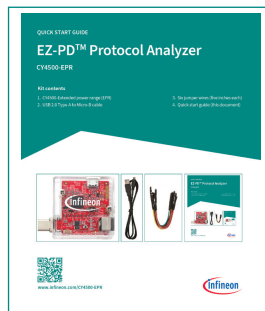
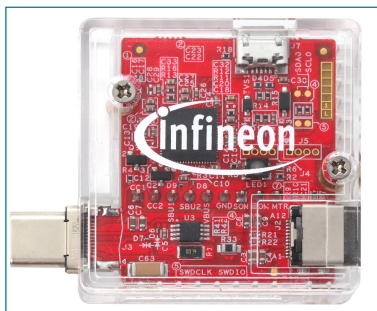


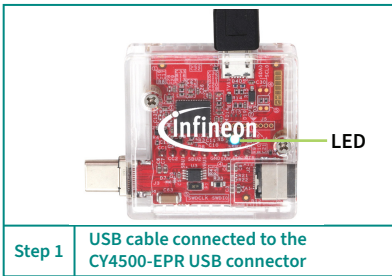
EZ-PD™ Protocol Analyzer

CY4500-EPR

Kit contents

1. CY4500-Extended power range (EPR)
2. USB 2.0 Type-A to Micro-B cable
3. Six jumper wires (five inches each)
4. Quick start guide (this document)

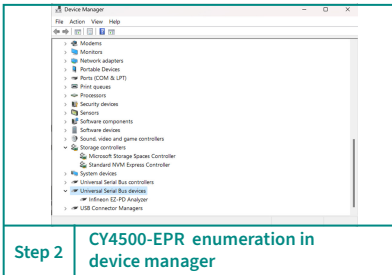




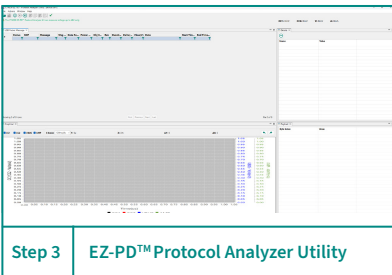
Before you start

1. Ensure that you have the following:
 - PC with at least one Type-A port
 - USB-PD source device
 - USB-PD sink device

Step 1: Connect the CY4500-EPR kit to the PC using the USB 2.0 Type-A to Micro-B cable. Observe that the LED1 blinks white continuously.

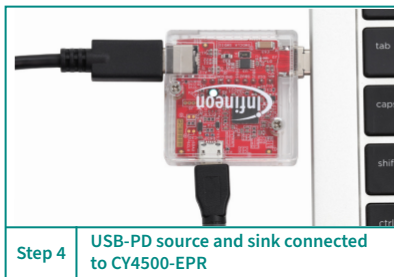


Step 2: Wait for the installation of the driver for protocol analyzer to complete. The board enumerates as **Infineon EZ-PD™ Analyzer** under **Universal Serial Bus devices** in **Windows Device Manager**.



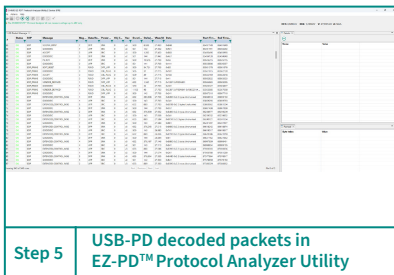
Step 3: Launch EZ-PD™ Protocol Analyzer Utility

1. Download and install the EZ-PD™ Protocol Analyzer Utility from Infineon website.
2. Start the EZ-PD™ Protocol Analyzer Utility.
3. On the utility, click the start icon.
4. Select **Action > Start** to capture the data.
5. Once the capture starts the LED1 on the CY4500-EPR turns green.



Step 4: Connect the host and sink device to CY4500-EPR

- Connect the Type-C plug/receptacle of the CY4500-EPR EZ-PD™ Protocol Analyzer to the host/sink device.
- Connect the other end of the Type-C plug/receptacle of the CY4500-EPR EZ-PD™ Protocol Analyzer to power adapter or any other device (not provided with the analyzer). For more information, go to [CY4500-EPR EZ-PD™ Protocol Analyzer](#).



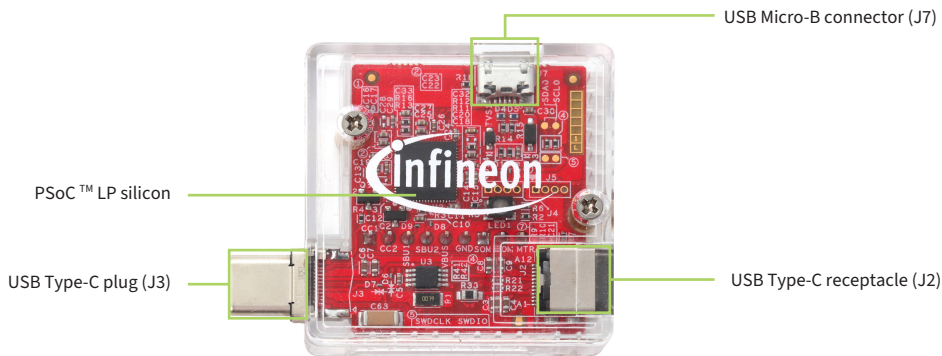
Step 5: Capture and analyze packets

- Observe that the utility captures the USB Power Delivery packets sent on CC lines and displays them on the screen.
- Click a message in the main panel to view the detailed description on the right panel.

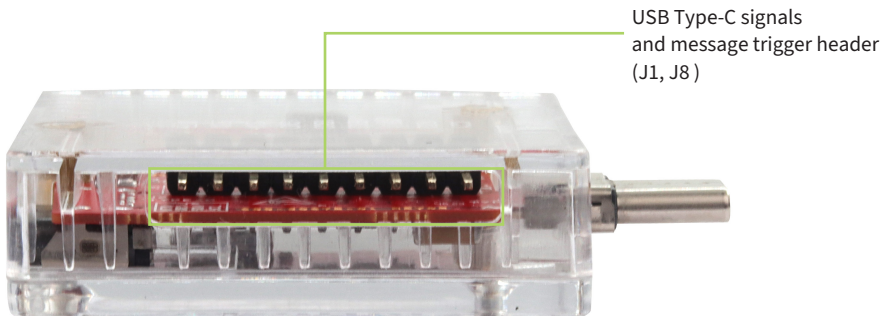
Note:

- The older CY4500 EZ-PD™ Protocol Analyzer is compatible with the newer application (even if the application prompts to download a new firmware on the device but VBUS will be limited to SPR).
- Ensure that the Type-C host and the power adapter/ device is connected to CY4500-EPR board and does not exceed 5 V on CC lines.

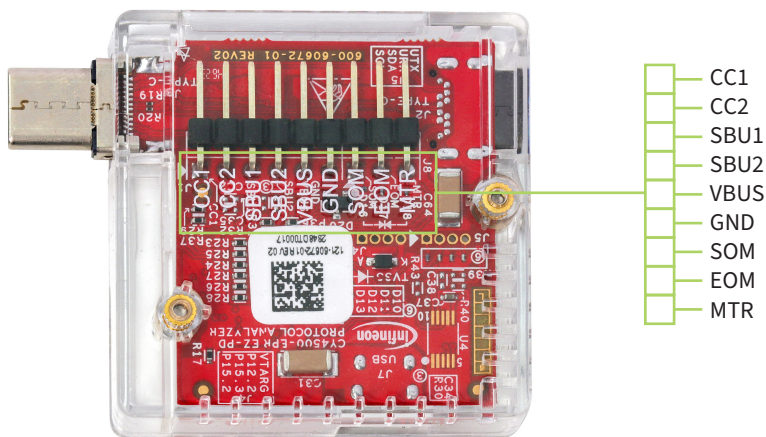
CY4500-EPR (top view)



CY4500-EPR (side view)



CY4500-EPR (bottom view)



Contact technical support to obtain the kit document and software examples. For additional details, see the kit guide available on the Infineon kit webpage - <https://www.infineon.com/CY4500-EPR>