

## ELECTRONICS

### Purpose

This document outlines how to activate the ConnectAnywhere 2.0 All-in-One or LTE Wi-Fi Extender.

### Additional Information

Additional information about this product can be obtained from [lci1.com/support](http://lci1.com/support) or by downloading the free LippertNOW app. The app is available on Apple App Store® for iPhone® and iPad® and also on Google Play™ for Android™ users.

For information on the assembly or individual components of this product, please visit:

<https://support.lci1.com/connectanywhere>

### Safety

Warning, Caution and Danger symbols indicate that an installation procedure has a safety risk involved and may cause death, serious injury or property damage if not performed safely and within the parameters set forth in this manual.

### ⚠ WARNING

**Do not try to activate Wi-Fi Extender while towing the trailer and operating the tow vehicle. Distracted driving impairs ability to mind the rules of the road and adhere to safety rules and regulation that could result in personal or property damage and/or death.**

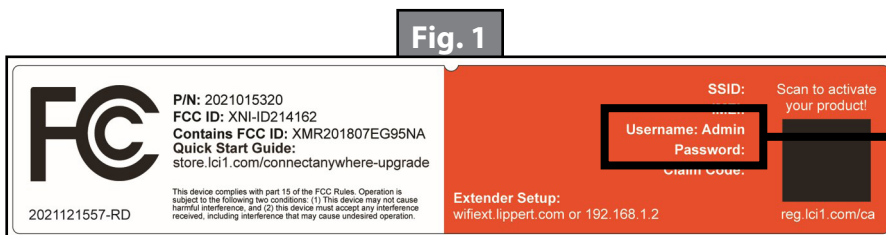
### Resources Required

- ConnectAnywhere 2.0 AIO or LTE antenna and router installed
- Connectivity plan providing Internet services
- Smart device or personal computer with web browser (such as Chrome or Edge)
- The ConnectAnywhere label

### Procedure

1. Open a web browser on a smart phone or personal computer.
2. Enter the IP address in the web address bar and then the label's username and password (Fig. 1) when asked (Fig. 2).

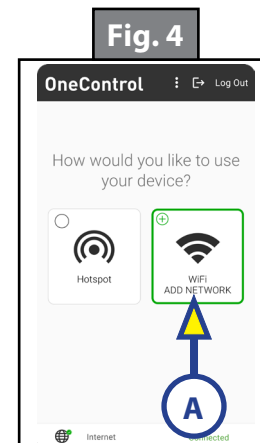
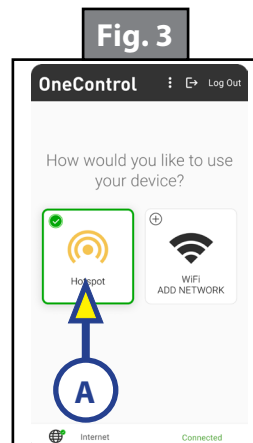
**NOTE:** The IP address is: 192.168.1.2



## ELECTRONICS

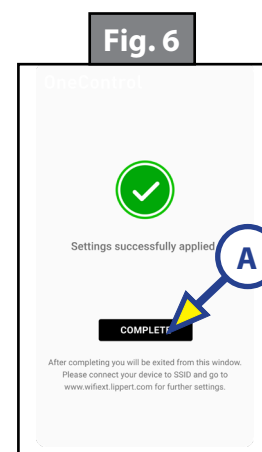
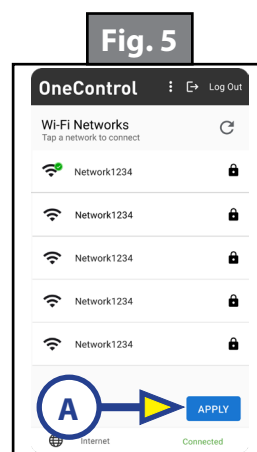
**NOTE:** The Router is set to Hotspot (Fig. 3A). This provides long-range connectivity to support telematics and data plans.

3. To access local Wi-Fi networks, select "Add Network" (Fig. 4A). This will search for available networks.



4. Select the preferred local network (Fig. 5). Enter its credentials and press APPLY (Fig. 5A).
5. When Extender is on, the Router's LED will turn BLUE. Press COMPLETE (Fig. 6A).
6. From your smart device, connect to the Router's SSID. Login again with Router credentials.

**NOTE:** From your smart devices, use local networks to access data-heavy services.



## Return to Hotspot

- Enter [wifi.Lippert.ext](http://wifi.Lippert.ext) in a browser and select Hotspot on the Home page.
- Or, if Wi-Fi network connection is lost, Router switches automatically to Hotspot.

## Preferences

1. From the home page, you can change your Router's password (Fig. 7A).
2. Set the Router to connect automatically to trusted networks (Fig. 8A).

**NOTE:** The last 5 networks are stored. "Favorite" (Fig. 9A) up to 3 for Auto-Connect.

