

Mobile Power Station Application

User Manual

Contents

1. Disclaimer	1
2. Installation, registration and login	2
2.1 Installation	3
2.2 Account registration and login	4
3. Connecting, Setup and Usage	4
3.1 Connection and setup	4
3.2 Main functions of the application	7
3.3 Accessibility functions of the application	10
4. Upgrade, share, delete	12
4.1 Upgrade	12
4.2 Share	14
4.3 Change and delete device name	15
5. System settings (upgrades, push notifications, privacy, permissions)	15

1. Disclaimer

Thank you for purchasing our product. Before use, please carefully read the product manual and ensure the correct usage of this product. After reading this manual, please keep it properly for future reference. Improper use of this product may cause serious harm to yourself or others, as well as damage to the product and property loss. Once you begin using this product, it will be considered that you understand, agree, and accept all the terms and content of this manual. We are not responsible for any losses resulting from non-compliance with this manual. In accordance with legal regulations, we reserve the final interpretation rights for this document and all related documents concerning this product. This document may be subject to changes (updates, revisions, or termination) without prior notice. For the latest product information, please visit our official website.

2. Installation, registration and login

2.1 Installation

To improve user experience, the app is divided into two categories based on server location. Users can choose the appropriate application based on their region.

America / Canada: Lanbook

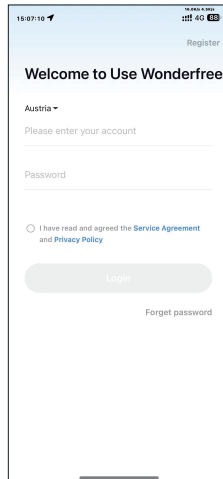
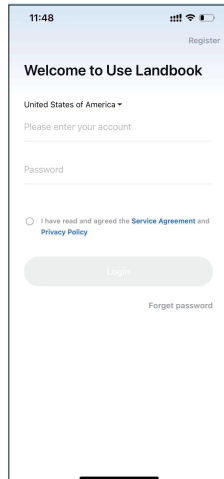
Other regions: Wonderfree

"APP" These two are collectively called "APP"



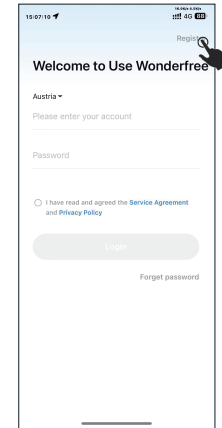
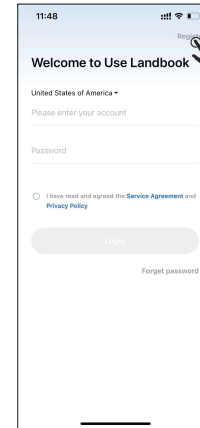
Lanbook Wonderfree

For iOS users, please open the App Store and search for the corresponding app (search for "Lanbook" in the United States and Canada, and "Wonderfree" in other regions). After downloading and installing the app, you can open the login interface. For Android users, please open the Google Play Store and search for the corresponding app (search for "Lanbook" in the United States and "Wonderfree" in other regions). After downloading and installing the app, open the app to enter the login interface.

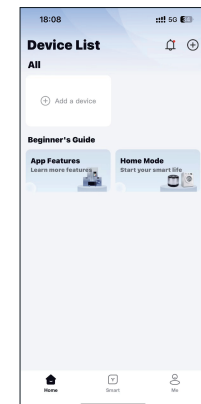


2.2 Account registration and login

Account registration and login for the application is done via e-mail. To register and log in: click on "Register" in the upper right corner of the login screen.



Select the appropriate country or region, enter your e-mail address, enter the verification code you received, set a password, and complete your registration. After registering, please make sure the country selected during login matches the country selected during registration. After successful login, the app will display the device list interface.



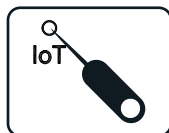
3. Connecting, setup and usage

3.1 Connection and setup

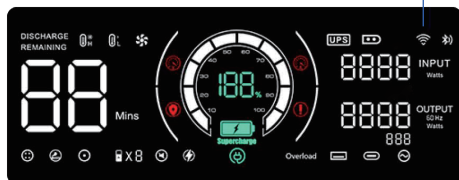
In use, the app requires Bluetooth. Make sure your phone's Bluetooth is turned on and that the app can access location information during use. The setup process of the app and power bank consists of two steps: A. Search and B. Connect.

A. Search:

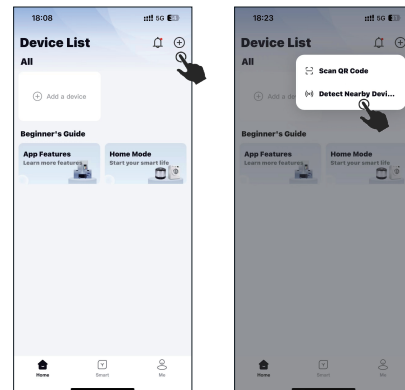
- 1) Click the USB button ten times in a row until you hear a "Di" and the network icon on the LCD screen flashes.
- 2) Press the "IoT" hole with a needle or other sharp object until the following occurs.



Flashing: Waiting for network distribution
Lit: Network distribution succeeded
No Wi-Fi / Prouty icon: Turn off network function / No network function

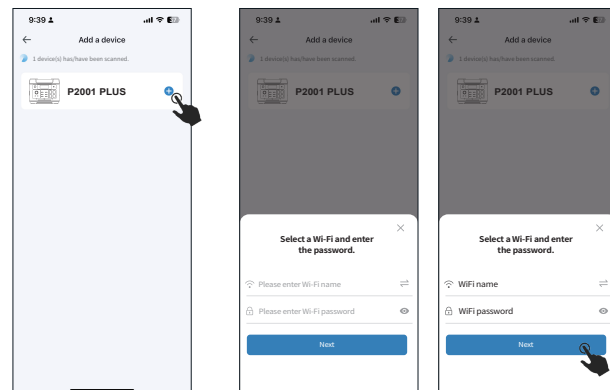


- ② Click the "+" button in the upper right corner of the app's device list interface and select "Detect Nearby Devices". The app will display the devices that can be set up.

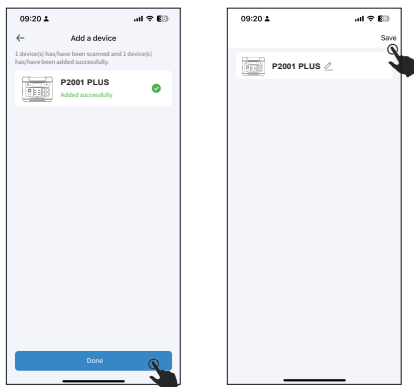


B. Connection:

- ① Click the "+" button, enter the WiFi account and password of the power bank you want to connect to, then select "Next" and wait for the loading progress bar.



② If the configuration is successful, the product device will appear on the screen. Select "Done" and "Save" to return to the device list. Alternatively, the user can click "Done" to customize the device name, then click "Save" to return to the device list. The user can also click "Done" to customize the device name and click "Save" to return to the device list.



If the application is unable to detect the device for an extended period or if the connection fails (displaying a timeout), please repeat steps A and B.

Precautions

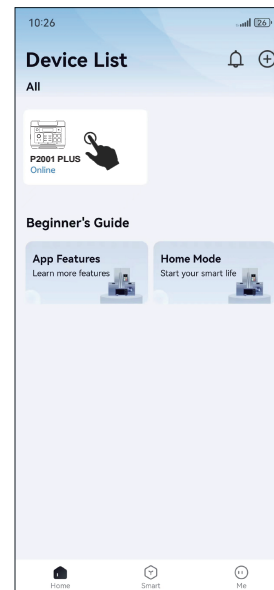
If you still fail after multiple attempts, please contact official customer service for technical support.

After successfully setting up the app and power bank, please note the following:

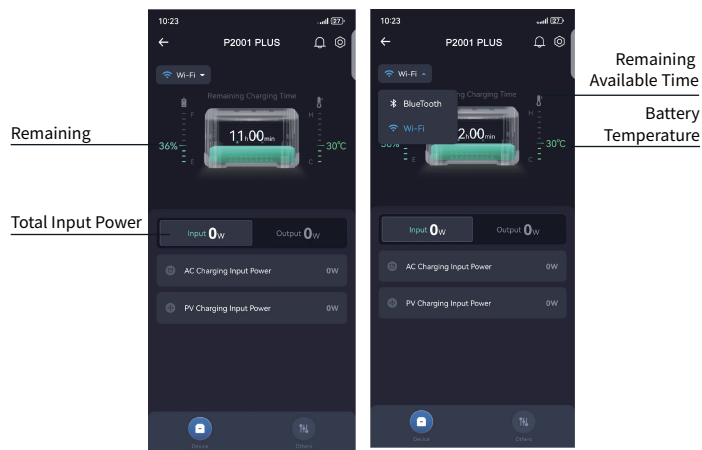
1. If you turn off and restart the power bank, there is no need to reset it. Open the app and wait for the device to come online again.
2. If the power bank is offline, the app will automatically switch from WiFi to Bluetooth.
3. The network setting icon on the LCD screen of the mobile power supply reflects the connection status between the application and the device. Flashing means waiting for connection, lighting means connecting (actual status may be different due to network conditions and other actual factors). If there is a delay between the display status of the application and the LCD screen display of the mobile power supply, it can be solved by waiting for a period of time or restarting the application.

3.2 Main functions of the application

Click on the connected device's icon to access the main control panel.



In the input section, the following parameters/functions will be displayed:



Remaining	The percentage of remaining battery power.
Remaining Available Time	At the current output power, the remaining battery power can theoretically support the operating time of the power station.
Battery Temperature	Battery cell temperature.
Input	Total input power including AC input power and DC (photovoltaic) input power.

Click "Output" on the main interface and the following parameters/functions will be displayed:



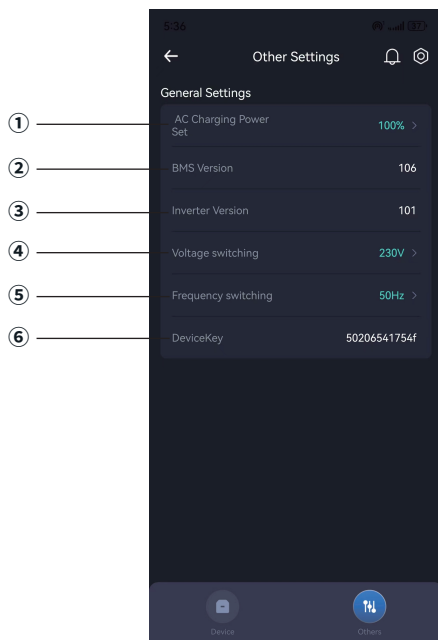
① Output	Total output power (including AC, USB, TypeC, DC)
② AC Info	AC output switch button to displays AC output power.
③ USB Info	USB output switch button to display USB output power.
④ TypeC Info	Displays the output power of each of the four TypeC ports.
⑤ DC Info	DC output switching button displays DC output power.

3.3 Accessibility functions of the application

Click "Other" in the bottom panel to access the Accessibility page.



Here you will find the following parameters/functions:

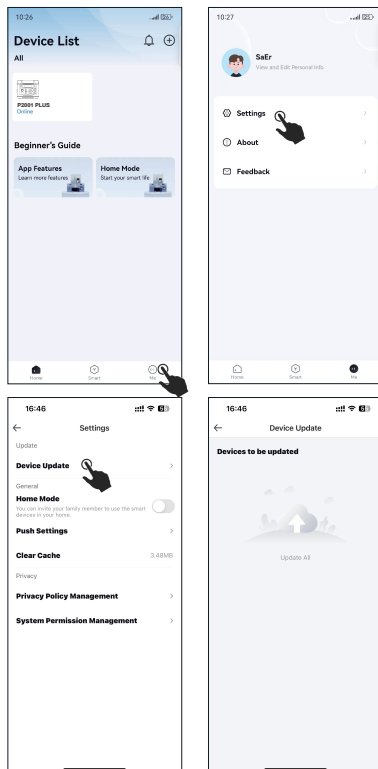


① AC Charging Power Set	The power bank can be charged to 100%. Users can adjust the AC charging power within the range of 3% to 100% as needed.
② BMS Version	BMS board version of this machine.
③ Inverter Version	Inverter board version of this machine.
④ Voltage Switching	AC output voltage level (for 110V equipment, the voltage level can be switched between 100V, 110V, 120V; for 220V equipment, the voltage level can be switched between 220V, 230V). Users can switch voltages within the app as needed.
⑤ Frequency Setting	The AC output frequency can be switched between 50Hz and 60Hz as needed.
⑥ Device Key	Each Power Station has an independent module code for future remote upgrades and after-sales service. Users do not need to worry about this when using the device.

4. Upgrade, share and delete

4.1 Upgrade

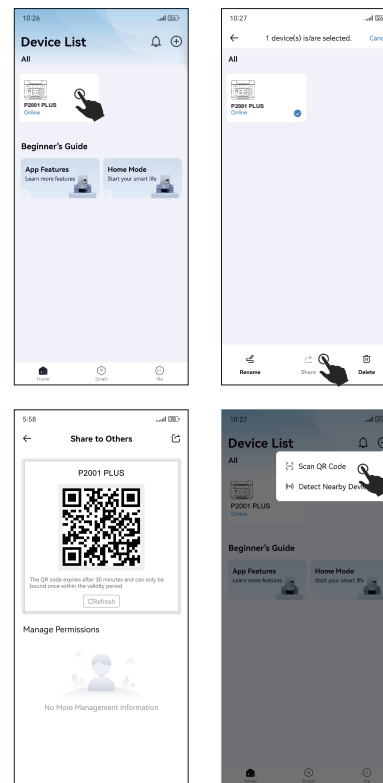
In order to enhance the convenience of the device, users may receive device firmware upgrade notifications from the application while using the device. Users can click on "Me" at the bottom, go to "Settings," and select "Device Update" to view the upgrade plan. The relevant upgrades can be completed on the device upgrade screen. After a successful upgrade, users need to manually delete and reconfigure the device from the application.



4.2 Share

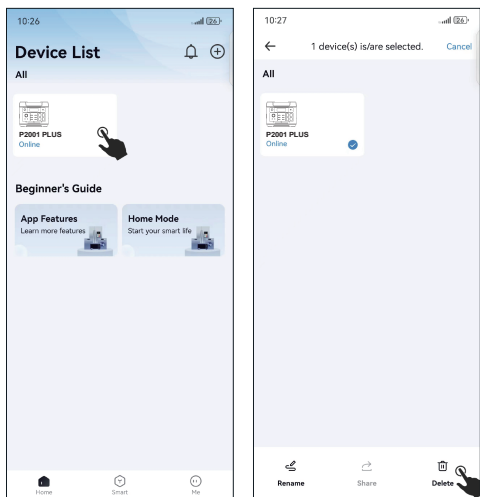
If the device is successfully connected, the application supports sharing the device with other mobile users using QR codes. The steps are as follows:

- ① Open the device list and long press the device icon. This will display the menu.
- ② After selecting "Share", the QR code will be displayed. Other users can scan this code to add devices.



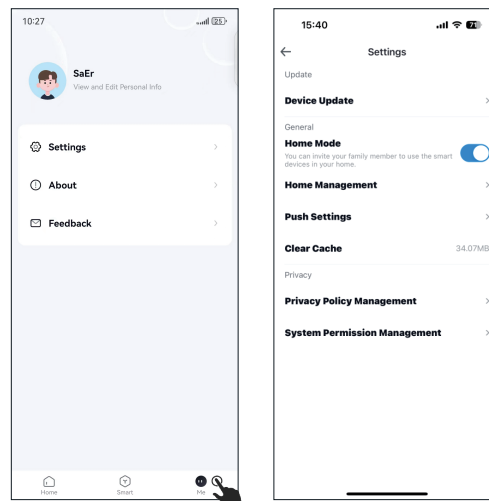
4.3 Change and delete device name

For added devices, you can change their names. Long press on the device's icon and a menu will appear. Click "Rename" to edit the name, or "Delete" to delete the device. If you need to re-add the device, follow the configuration process described in Section 3.1.



5. System settings (upgrades, push notifications, privacy and permissions)

Tap "Me" at the bottom of the app to access the messaging interface. On this interface you can perform the following operations:



Setting: Device Update

- Push Settings (Toggle alarms, warnings and fault notifications on/off)
 - Clear Cache
 - Privacy Policy Management (You can view APP's Brypathy Policy and Serpice Agreement)
 - System Permission Management (Turn on/off application access to mobile phone location, camera and photo gallery)
- the following:· Click on the APP version.
- Check the application version. You can report problems you encounter while using your device.

A place to provide feedback on deficiencies in the user experience of your application.



Wonderfree



Wonderfree



Landbook



Landbook

