

CLEANING AND MAINTENANCE

Give the fountain parts a quick rinse and dry **at least every 2 weeks** to ensure optimal operation of your pet fountain and keeping your pet hydrated.

It is recommended to clean the pump parts at least every 2 weeks to optimize the pump's lifespan. If you are using hard water, you may need to clean the pump more often.

To clean:

1. Remove the pump from the fountain and soak it in a 1:1 ratio of water to vinegar mixture for 30 minutes.
2. Thoroughly rinse the pump with clean water and reassemble it as set out in the Instruction Manual.

Dry all parts thoroughly after cleaning.

GETTING YOUR PET TO USE THE FOUNTAIN

Some pets may need extra time to cozy up to their new watering spot. If your pal doesn't take to this hydrating oasis right away, place it next to their bowl to help encourage them to use it.

STORAGE

- Keep in a cool, dry place away from children and pets.
- Avoid any shocks or vibrations.

WARNINGS

Risk of injury, fire or electric shock!

- For pet use only.
- Never wash the power adapter.
- Never immerse the power adapter in water or other liquids.
- Do not hold power adapter under running water.
- Pet fountain should always be unplugged when: not in use, before and during cleaning, and before putting on or taking off any parts.
- Regularly check water level and never let it drop below the MIN level. The submersible pump should never run without adequate water as it can overheat.
- Never let your pet chew on the cable as there is a risk of an electric shock. If your pet is known to chew cables, a gravity waterer may be a better option. Discontinue use if the cable is chewed.
- Only the pump is waterproof. Do not submerge the power adapter.
- Do not use any harsh detergents, wire brushes or any utensils to clean.
- Use close supervision when using near children.
- Do not pull on the cable to unplug. Only grasp the power adapter to unplug.
- Do not use if cable is damaged or if the product is dropped.
- Do not allow water to sit in the base without operating the pump. Water will evaporate which may lead to dried hard water minerals that could impact pump functionality.

QUESTIONS?

CALL OUR FRIENDLY CUSTOMER SERVICE TEAM ANYTIME.
WE'RE HERE 24/7! 1-800-67-CHEWY (672-4399)

PET FOUNTAIN INSTRUCTION MANUAL

SKU 316358

GET SET TO HYDRATE!

Before assembling, check that all the parts are included:



INTENDED USE

- Intended to be used as a water source for your pets. For household use only.
- For pet use only.
- Use only in dry indoor areas.
- Not for outdoor use.
- Do not use with the power adapter close to a tub or sink.
- Improper use can result in damages or injuries.

BEFORE FIRST USE

- Remove all packaging materials. Please remove protective foam from the pump prior to use.
- Check product for any damages before assembling and using.
- Clean the product with warm soapy water. Do not clean the power adapter.
- Soak filter in water for 2 minutes and rinse for 30 seconds.

DANGER - RISK OF SUFFOCATION!

Keep any packaging materials away from children.

PUTTING IT TOGETHER

Save these instructions for future reference.

Use all parts included for assembly and follow all instructions carefully.



Step 1

Soak the filter in water for 2 minutes and rinse for 30 seconds before inserting the filter into the filter holder.



Step 2

Locate the slider – Move the pump's slider up/down to adjust the water flow. The recommended starting default location of this product is the highest one. **HINT:** Fill with clean water to the MAX level.



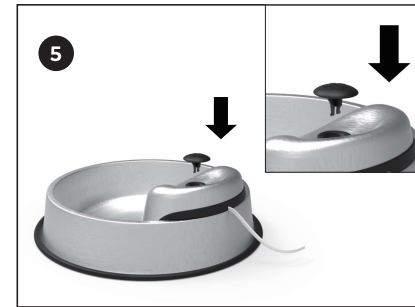
Step 3

Insert the stainless steel cover into the filter holder, make sure to insert it into the slot on the plastic holder.



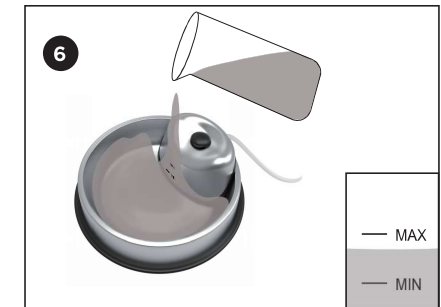
Step 4

Put the installed stainless steel cover and filter holder into the opening on the rim of the base.



Step 5

Insert the mushroom cap. **DO NOT** operate pump without cap, this is to prevent excess water output resulting in water spillage over the back of the stainless steel cover.



Step 6

Fill the fountain with clean water to the water level between MIN and MAX on the water level indicator. **Pump only operates when water level is above the MIN water level, if not, it will not operate.**



Step 7

Connect to the power supply.

CAUTION

RISK OF ELECTRIC SHOCK! When not in use, always leave unplugged.

Do not turn the Pet fountain on without filling with water.

Only use the Pet Fountain on a dry, flat, water-resistant surface.

TURN IT ON: Connect the pump cable to the power adapter, then plug into a main socket. Always make sure there is enough water in the container before turning on.

TURN IT OFF: Unplug the power adapter. Never pull on the cable to unplug.

TIP: To adjust the water flow, use the built-in slider on the pump.

FCC Applicable to the Adapter

This device complies with part 15 of the FCC Rules.

Operation is subject to the following two conditions:

- (1) This device may not cause harmful interference, and
- (2) this device must accept any interference received, including interference that may cause undesired operation.



FCC Responsible Party and Distributor, Chewy Inc.
1855 Griffin Road, Suite B-428, Dania Beach,
FL 330041 Ph 1-800-672-4399