


[Skip to content](#)

Manuals+

User Manuals Simplified.



Oral-B iO Series IO9 M9.4B2.2A BK 9 Connected Rechargeable Electric Toothbrush Instruction Manual

April 24, 2022 April 24, 2022  [Leave a comment on Oral-B iO Series IO9 M9.4B2.2A BK 9 Connected Rechargeable Electric Toothbrush Instruction Manual](#)

[Home](#) » [Oral-B](#) » Oral-B iO Series IO9 M9.4B2.2A BK 9 Connected Rechargeable Electric Toothbrush Instruction Manual



Contents [hide](#)

[1 Oral-B iO Series IO9 M9.4B2.2A BK 9 Connected Rechargeable Electric Toothbrush](#)

[2 Description](#)

[3 IMPORTANT](#)

[4 First use](#)

[5 Charging and Operating](#)

[6 Using your toothbrush](#)

[7 Brush heads](#)

[8 Connecting your toothbrush to your Smartphone](#)

[9 Cleaning recommendations](#)

[10 Accessories](#)

[11 Environmental Notice](#)

[12 Guarantee](#)

[13 Trouble Shooting](#)

[14 Documents / Resources](#)

[14.1 Related Manuals / Resources](#)

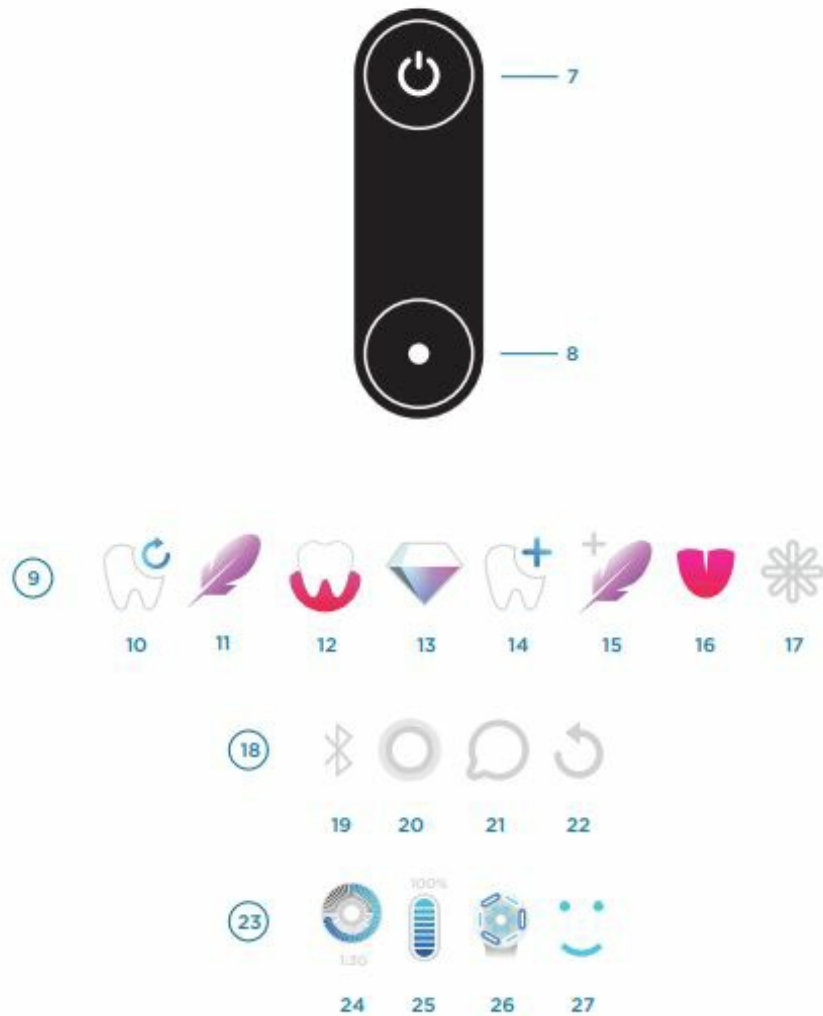


Oral-B iO Series IO9 M9.4B2.2A BK 9 Connected Rechargeable Electric Toothbrush



Description

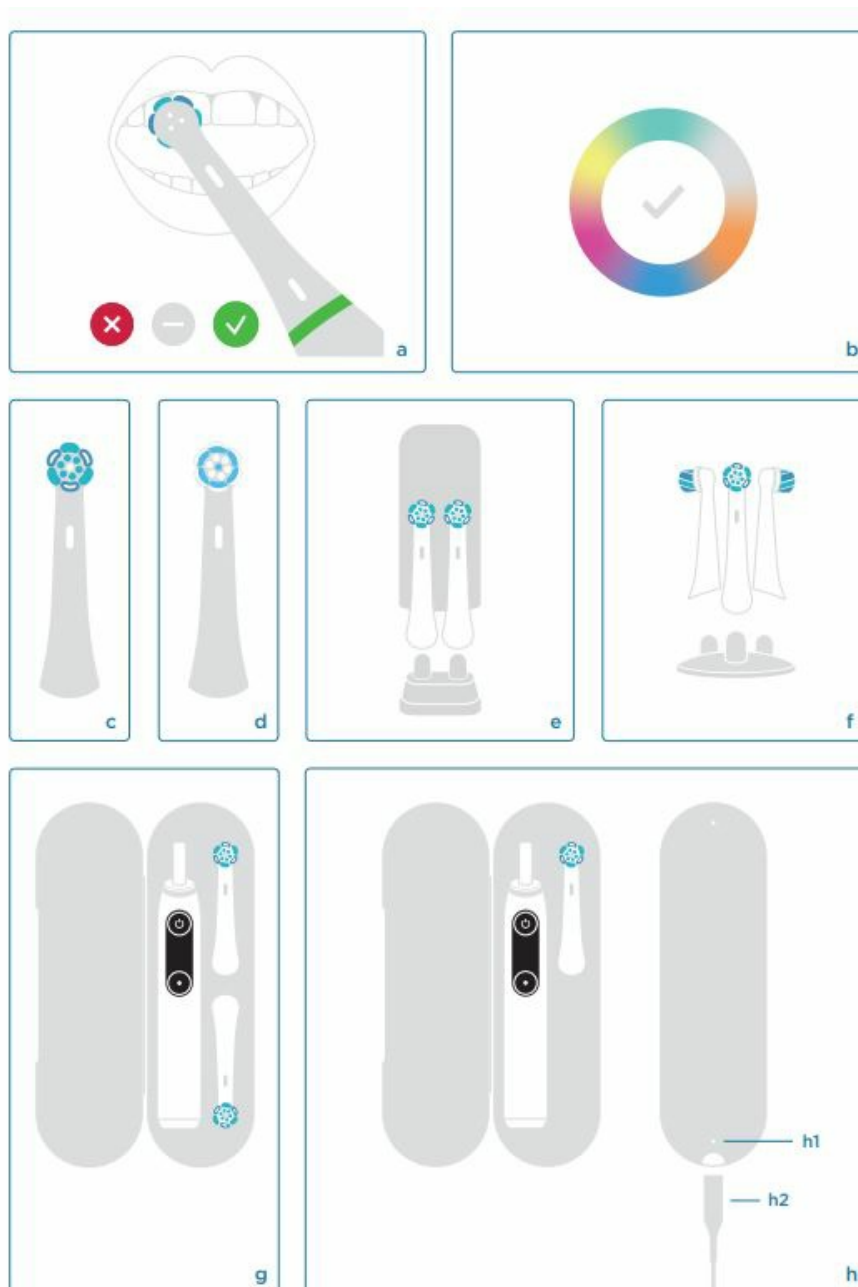
1. Brush head
2. Brush head identification symbol
3. Smart Pressure Sensor (Light Ring)
4. Interactive Display
5. Handle
6. Charger
7. On/off button
8. Mode button
9. Interactive Display features
10. Daily Clean» mode
11. Sensitive» mode
12. Gum Care» mode
13. Whiten» mode
14. Intense» mode
15. Super Sensitive» mode
16. Tongue Clean» mode
17. Settings menu
18. Settings menu features
19. Manage Bluetooth® settings
20. Select/Change colour of Light Ring
21. Select/Change language
22. Perform factory reset
23. Feedback features
24. Timer
25. Battery status
26. Exchange reminder



27. Brush feedback

Accessories and features:

- Smart Pressure Sensor features
 - Customize colour of Light Ring via Oral-B App
 - Brush head «Ultimate Clean»
 - Brush head «Gentle Care»
 - Brush head holder with cap
 - Brush head holder stand
 - Travel case
 - Charging travel case
 - Charging light
 - Power supply (Smart Plug)
 - Download Oral-B App and connect to Bluetooth® (see back page)
- Note:** Content may vary based on the model purchased.



IMPORTANT

- Periodically check the entire product/cords/accessories for damage. A damaged or non-functioning unit should no longer be used. If the product/cords/accessories are damaged, take it to an Oral-B Service Centre. Do not modify or repair the product. This may cause fire, electric shock or injury. Never insert any object into any opening of the appliance.
- Usage by children under age 3 is not recommended. Toothbrushes can be used by children and persons with reduced physical, sensory or mental capabilities or lack of experience and knowledge, if they have been given supervision or instruction concerning use of the appliance in a safe way and understand the hazards involved.
- Cleaning and maintenance shall not be performed by children.
- Children shall not play with the appliance.
- Use this product only for its intended use as described in this manual. Do not use attachments which are not recommended by the manufacturer. Only use the charger provided with your appliance.
- Only use the charger and/or special cord set (smart plug) with integrated Safety Extra Low Voltage power supply provided with your appliance. Do not exchange or tamper with any part of it, otherwise there is risk of an electric shock. If charging stand/charging travel case is marked with 492-xxxx, only use Braun/Oral-B special cord set (smart plug) with this identification.

WARNING

- Do not place the charger, smart plug or charging travel case in water or liquid or store where it can fall or be pulled into a tub or sink. Do not reach for it when fallen into water. Unplug immediately.
- Avoid sharp bending, jamming or squeezing of the cord.
- This appliance contains batteries that are non-replaceable. Do not open and disassemble device. For battery recycling

please dispose whole device according to local environmental regulations.

- Opening the handle will destroy the appliance and invalidate the warranty.
- When unplugging, always pull the power plug instead of the cord. Do not touch the power plug with wet hands. This can cause an electric shock.
- If you are undergoing treatment for any oral care condition, consult your dental professional prior to use.
- This toothbrush is a personal care device and is not intended for use on multiple patients in a dental practice or institution. For hygienic reasons we recommend the use of individual brush handles and brush heads for each family member.
- Small parts may come off, keep out of reach of children.
- To avoid brush head breakage which may generate a small parts choking hazard or damage teeth:
- Prior to each use, ensure the brush head fits well. Discontinue use of the toothbrush, if brush head no longer fit properly. Never use without a brush head.
- If the toothbrush handle is dropped, the brush head should be replaced before the next use even if no damage is visible
- Replace brush head every 3 months or sooner if brush head becomes worn.
- Clean brush head properly after each use
(see «Cleaning recommendations» paragraph). Proper cleaning ensures the safe use and functional life of the toothbrush.

Important Information

- This toothbrush, charger and pouch (accessory) contain NdFeB magnets and generate magnetic fields. If you use a medical device or have an implanted medical device, consult with the medical device manufacturer or a physician, if you have questions about safely using your Oral-B iO toothbrush.
- Your Oral-B toothbrush can be used with your smartphone (find details under «Connecting your toothbrush to your Smartphone»).
- To avoid electromagnetic interference and/or compatibility conflicts, disable Bluetooth® on your toothbrush handle (5) before using it in restricted surroundings, such as aircrafts or specially marked areas in hospitals.
- Disable Bluetooth by entering the «Settings» menu on the interactive display (4) -> Bluetooth -> disable. Follow the same procedure to enable Bluetooth again.
- Persons with pacemakers should always keep the toothbrush more than 15 centimeters (six inches) from the pacemaker while turned on. Anytime you suspect interference is taking place disable Bluetooth.

Specifications

For voltage specifications refer to the bottom of the charging unit.

Noise level: 62 dB (A)

First use

Please wake up your toothbrush by pressing the on/off button (7) and follow the instructions on the interactive display (4) to get started for first time setup.

If not further instructed on the display, you may toggle with the mode button (8) and select with the on/off button (7).

You may change the settings via the «Settings» menu (17) at any time.

Charging and Operating

- To charge the battery place the toothbrush on the plugged-in charger (6).
- The charge level is indicated on the interactive display (4). Once it is fully charged the display turns off. A full charge typically takes 3 hours.
- If the battery is running low the motor reduces its speed and the Smart Pressure Sensor (3) shortly blinks in red. Once the battery is empty, the motor stops; it will need at least a 5-minute charge for one usage.

Note: In case the battery is empty (display off), charge for at least 30 minutes. You can always store the handle on the plugged-in charger to maintain it at full charge; a battery overcharge is prevented by the device. Store handle at room temperature for optimal battery maintenance.

Caution: Do not expose handle to temperatures higher than 50 °C / 122 °F.

Using your toothbrush

Start Brushing

Place the brush head on the handle. A small gap should remain between handle and brush head. Lift the handle off the plugged-in charger or simply pick it up to wake up the handle (display turns on). Wet brush head and apply toothpaste. To avoid splashing, guide the brush head to your teeth before switching the handle on by pressing the on/off button.

Note: Display turns off after some time. You may press the on/off button to activate display again.

Guide the brush head from tooth to tooth. Brush the outsides, the insides and the chewing surfaces. Brush all four quadrants of your mouth equally. You may also consult your dentist or dental hygienist about the right technique for you.

After Brushing, the display gives you feedback based on your brushing time. In the first days of using any electric toothbrush, your gums may bleed slightly. In general, bleeding should stop after a few days. Should it persist after 2 weeks, please consult

your dentist or dental hygienist. If you have sensitive teeth and/or gums, Oral-B recommends using the «Sensitive» or «Super Sensitive» modes (optional in combination with an Oral-B «Gentle Care» brush head (d)).

Timer

The timer signals with a short stuttering sound at 30-seconds intervals to move to the next quadrant of your mouth. A long stuttering sound indicates the end of the professionally recommended 2-minute brushing time. The timer memorizes the elapsed brushing time, even when the handle is briefly switched off during brushing. The timer resets if pausing longer than 30 seconds or placing the handle on the plugged-in charger.

Note: During the use of the Oral-B App, the timer may be deactivated for some features. You may also customize the timer settings via Oral-B App.

Smart Pressure Sensor features (a)

Your toothbrush is equipped with a Smart Pressure Sensor (3) that has various functionalities indicated via different colours of light: White (default) = Operating indicator (choose individual colour via Oral-B App (b)) / Low pressure indicator

- Red = high pressure indicator / low battery indicator
- Green = recommended pressure indicator
- Blue = Bluetooth pairing indicator
- Orange = Error indicator (follow display messages)

Brush with the right pressure indicated with a green light. If too much pressure is applied, it lights up in red reminding you to reduce pressure. If the Smart Pressure Sensor illuminates in white (or your pre-selected colour), we recommend applying more pressure. During high pressure the brush head movement will be reduced (in «Daily Clean», «Intense» and «Sensitive» modes). Periodically check the operation of the Smart Pressure Sensor by pressing moderately on the brush head during use.

Note: During the use of the Oral-B App, the Smart Pressure Sensor feedback may be inactive for some features. Smart Pressure Sensor is deactivated during «Tongue Clean» mode.

Brushing modes (depending on model)

Your toothbrush offers different brushing modes indicated on the display:

- **Daily Clean»** – Standard mode for daily cleaning
- **Sensitive»** – Gentle, yet thorough cleaning for sensitive areas
- **Gum Care»** – Gentle massage of gums
- **Whiten»** – Polishing for occasional or everyday use
- **Intense»** – For an extraordinary clean feeling (operated with a higher speed)
- **Super Sensitive»** – Super gentle cleaning for extra sensitive areas
- **Tongue Clean»** – Tongue cleaning for occasional or everyday use

When operating the «Tongue Clean» mode, we recommend using a «Gentle Care» brush head (d). You can brush your tongue either with or without toothpaste. Brush the whole area of your tongue systematically in gentle movements. The recommended brushing time is 30 seconds; the motor stops after 30 seconds.

Mode setting:

You may first choose your default mode by pressing the mode button (8) successively once the handle is awake (display turned on). Select

a mode by pressing the on/off button (7). Your toothbrush starts in the selected default mode. You may also change modes during brushing.

Note: You may also customize mode settings via Oral-B App.

Interactive Display

Turn on the interactive display (4) by pressing the on/off button (7). If not further instructed on the display, you may toggle with the mode button and select with the on/off button. (10-16) «Mode selection» – toggle by pressing the mode button and select default start mode with on/off button. (17) «Settings» – toggle through all modes until you reach the option «Settings»; to enter press the on/off button:

- (19) manage Bluetooth settings (enable, disable)
- (20) select/change colour of Light Ring
- (21) select/change language
- (22) perform factory reset
- (24) «Timer» – displays brushing time.
- (25) «Battery status» – shows battery status after use, when charging or when the battery is low.
- (26) «Exchange reminder» – reminds you when to replace your brush head.
- (27) «Brush feedback» – brushing feedback is indicated with a smiley face.

Brush waking» when the handle is picked up, lifted off the plugged-in charger or when you press the on/off button the handle indicates its readiness. Error messages» – «outside operating limits»: you are operating or charging outside standard temperatures and/or above standard battery current.

Brush heads

- Oral-B offers you a variety of different Oral-B
- iO brush heads (c/d) that only fit your Oral-B
- iO toothbrush handle and can be used for tooth-by-tooth precision cleaning.
- Most iO Oral-B brush heads feature INDICATOR® bristles to help you monitor brush head replacement needs. With thorough brushing, twice a day for two minutes, the bristle colour will fade halfway approximately within 3 months, indicating the need to exchange your brush head. If the bristles splay before the color recedes, you may exert too much pressure on teeth and gums.
- In general, we recommend replacing the brush head every 3 months.

Connecting your toothbrush to your Smartphone

The Oral-B App is available for smartphones running iOS or Android™ operating systems. It can be downloaded for free from App Store(SM)/ Google Play™ or you may scan the QR code on the back page of this manual (i).

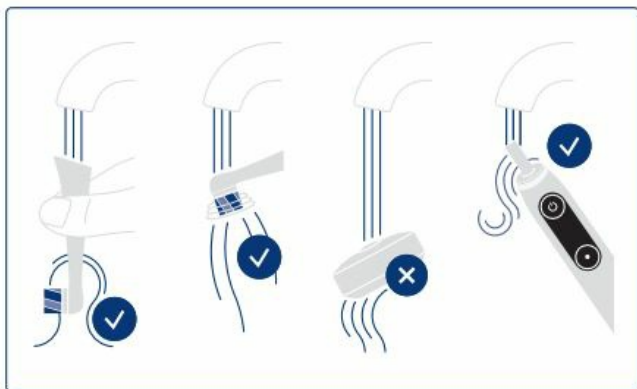
- Launch the Oral-B App. It will guide you through the entire Bluetooth pairing procedure.
 - You may also find it under the App's settings (More -> Your brush).
- Note:** Oral-B App functionality is limited if Bluetooth is deactivated on your smartphone (for directions please refer to your smart- phone's user manual).
- Pairing is indicated via the Smart Pressure Sensor light. Any App instructions will be displayed on your smartphone.
 - You may change Bluetooth settings at any time on your handle via the display -> Settings -> Bluetooth enable/disable.
 - Keep your smartphone in close proximity (within 5m distance) when using it with the handle. Make sure the smartphone is safely positioned in a dry place.

Note: Your smartphone must support Bluetooth 4.2 (or higher) / Bluetooth Smart in order to pair your handle. Check www.oralbappavailability.co.uk for compatible smartphones and country availability of the Oral-B App.

Caution: Follow your smartphone's user manual to ensure your phone/charger is designed for use in a bathroom environment.

Cleaning recommendations

After brushing, rinse your brush head under running water with the handle switched on. Remove the brush head and clean the handle and brush head separately. Make sure water runs inside the top of the handle as well as inside the brush head. Wipe all parts dry and let them air-dry before reassembling your toothbrush again. Unplug the charger before cleaning. Clean the charger regularly with a damp cloth. Please check individual cleaning instructions for each accessory in its «Accessories» paragraph.



Accessories

(depending on model)

Charging Travel Case (h)

- To charge your handle (5) place it in the charging travel case (h) and connect it to an electric outlet, using the extra power supply (h2) provided. The power supply may be used for all global mains voltage ranges (100 – 240V).
- The flashing light (h1) of the charging travel case indicates that the handle is charging. Once the handle is fully charged the light turns off. A full charge typically takes 6 hours.
- The outer and inner case should be cleaned with a damp cloth only. Make sure that the handle and brush head are completely dry before storing in the travel case.

Note: Clean stains on travel case surface immediately. Store travel case in a clean and dry place.

Travel Case

Store the clean and dry toothbrush/brush heads in the travel case (g). The outer and inner case should be cleaned with a damp cloth only.

Note: Clean stains on travel case surface immediately. Store travel case in a clean and dry place.

Brush head holder stand (f) / Brush head holder with cap (e)

You may store your cleaned brush heads on the pins of the brush head holders. Make sure brush heads are dried before placing them in the holder and/or closing the cap. Brush head holders and cap are dishwasher-safe.

Zipper Pouch / Magnetic Pouch

Store the clean and dry toothbrush/brush heads in the zipper pouch. The outer and inner case can be cleaned under running water. Store the clean and dry toothbrush along with the brush head holder (e) in the magnetic pouch. Make sure brush heads are dried before placing them into the holder and/or closing the cap. The outer and inner surfaces can be cleaned under running water. Store pouches in a clean and dry place.

Note: Clean stains on pouch surfaces immediately. Subject to change without notice.

Environmental Notice

Product contains batteries and/or recyclable electric waste. For environment protection do not dispose in household waste, but for recycling take to electric waste collection points provided in your country.

Guarantee

We grant 2 years guarantee on the product commencing on the date of purchase. Within the guarantee period we will eliminate, free of charge, any defects in the appliance resulting from faults in materials or workmanship, either by repairing or replacing the complete appliance as we may choose. Depending on availability replacement of a unit might result in a different colour or an equivalent model. This guarantee extends to every country where this appliance is supplied by Braun/ Oral-B or its appointed distributor. This guarantee does not cover: damage due to improper use, normal wear or use, especially regarding the brush heads, as well as defects that have a negligible effect on the value or operation of the appliance. The guarantee becomes void if repairs are undertaken by unauthorized persons and if original Braun/Oral-B parts are not used. This appliance is equipped with a Bluetooth Smart approved radio interface. Failure to establish a Bluetooth Smart connection to specific smartphones is not covered under the device guarantee, unless the malfunction of the Bluetooth interface is referable to Oral-B. The Bluetooth devices are warranted by their own manufacturers and not by Oral-B. Oral-B does not influence or make any recommendations to device manufacturers, and therefore Oral-B does not assume any responsibility for the number of compatible devices with our Bluetooth interface. Oral-B reserves the right, without any prior notice, to make any technical modifications or changes to system implementation of device features, interface, and menu structure changes that are deemed necessary to ensure that Oral-B systems function reliably. To obtain service within the guarantee period, hand in or send the complete appliance with your sales receipt to an authorized Oral-B Braun Customer Service Centre.

Information

Bluetooth® radio module

Although all indicated functions on the Bluetooth device are supported, Oral-B does not ensure 100% reliability in connection, and feature operation consistency. Operation performance and connection reliability are direct consequences of each individual Bluetooth device, software version, as well as the operating system of those Bluetooth devices and company security regulations implemented on the device.

Oral-B adheres to and strictly implements the Bluetooth standard by which Bluetooth devices can communicate and function in Oral-B toothbrushes.

However, if device manufacturers fail to implement this standard, Bluetooth compatibility and features will be further compromised and the user may experience functional and feature-related issues. Please note that the software on the Bluetooth device can significantly affect compatibility and operation.

Warranty – Exclusions and Limitations

This limited warranty applies only to the new products manufactured by or for The Procter & Gamble Company, its Affiliates or Subsidiaries («P&G») that can be identified by the Braun / Oral-B trademark, trade name, or logo affixed thereto. This limited warranty does not apply to any non-P&G product including hardware and software. P&G is not liable for any damage to or loss of any programs, data, or other information stored on any media contained within the product, or any non-P&G product or part not covered by this limited warranty. Recovery or reinstallation of programs, data or other information is not covered under this limited warranty. This limited warranty does not apply to (i) damage caused by accident, abuse, misuse, neglect, misapplication, or non-P&G product; (ii) damage caused by service performed by anyone other than Braun or authorized Braun service location; (iii) a product or part that has been modified without the written permission of P&G, and (iv) damage arising out of the use of or inability to use the Oral-B Smartphone stand/puck, Smartphone mirror holder, or charging travel case («Accessories»).

LIMITATION OF LIABILITY

TO THE EXTENT PERMITTED BY APPLICABLE LAW, IN NO EVENT SHALL P&G ITS DISTRIBUTORS OR SUPPLIERS BE LIABLE TO YOU OR ANY THIRD PARTY FOR ANY DIRECT, INDIRECT, INCIDENTAL, CONSEQUENTIAL, SPECIAL, EXEMPLARY OR PUNITIVE DAMAGES, OF ANY NATURE WHATSOEVER, ARISING OUT OF THE USE OF OR INABILITY

TO USE THE ORAL-B ACCESSORIES, INCLUDING, WITHOUT LIMITATION, INJURY TO PERSONS, PROPERTY DAMAGE, LOSS OF VALUE OF ANY THIRD PARTY PRODUCTS THAT ARE USED IN OR WITH THE ORAL-B ACCESSORIES, OR LOSS OF USE OF THE ORAL-B ACCESSORIES OR ANY THIRD PARTY PRODUCTS THAT ARE USED IN OR WITH THE ORAL-B ACCESSORIES, EVEN IF P&G HAS BEEN ADVISED OF THE POSSIBILITY OF SUCH DAMAGES. WITHOUT LIMITING THE FOREGOING, YOU UNDERSTAND AND AGREE THAT P&G HAS NO LIABILITY FOR ANY DAMAGE OR DESTRUCTION TO CONSUMER ELECTRONICS DEVICES OR OTHER PERSONAL PROPERTY THAT ARE CONTAINED ON OR EXTERIOR TO THE ORAL-B ACCESSORIES, OR ANY LOSS OF DATA CONTAINED IN THE FOREGOING DEVICES. IN NO EVENT SHALL ANY RECOVERY AGAINST ORAL-B EXCEED THE ACTUAL PRICE PAID FOR THE PURCHASE OF THE PRODUCT.

Warranty replacement brush heads

Oral-B warranty will be voided if electric rechargeable handle damage is found to be attributed to the use of non-Oral-B replacement brush heads. Oral-B does not recommend the use of non-Oral-B replacement brush heads.

- Oral-B has no control over the quality of non-Oral-B replacement brush heads. Therefore, we cannot ensure the cleaning performance of non-Oral-B replacement brush heads, as communicated with the electric rechargeable handle at time of initial purchase.
- Oral-B cannot ensure a good fit of non-Oral-B replacement brush heads.
- Oral-B cannot predict the long-term effect of non-Oral-B replacement brush heads on handle wear.

All Oral-B replacement brush heads carry the Oral-B logo and meet Oral-B’s high quality standards. Oral-B does not sell replacement brush heads or handle parts under any other brand name.

Trouble Shooting

Problem	Possible reason	Remedy
---------	-----------------	--------

Handle does not operate (properly) with Oral-B App.

1. Oral-B App is closed.
2. *Bluetooth* is not activated on smartphone.
3. *Bluetooth* is disabled on handle.
4. *Bluetooth* connection to smartphone has been lost.
5. Your smartphone does not support *Bluetooth* 4.2 (or higher) / *Bluetooth* Smart.
6. Outdated Oral-B App.

1. Launch Oral-B App.
 2. Activate *Bluetooth* on smartphone (described in its user manual).
 3. Enable *Bluetooth* via display Settings -> *Bluetooth* enable.
 4. Pair handle and smartphone again via App settings. Keep your smartphone in close proximity when using it with handle.
 5. Your smartphone must support *Bluetooth* 4.2 (or higher) / *Bluetooth* Smart in order to pair handle.
- Check www.oralbappavailability.co.uk for compatible smartphones and country availability of the Oral-B App.
6. Download latest Oral-B App.

Reset to factory settings.

Original functionality wanted.

Enter via display Settings -> Factory Reset (22). Press on/off button to confirm.

TOOTHBRUSH

Handle is not operating (during first use).	1. Battery has a very low charge level; handle does not operate.	1. Charge at least for 30 min.
	2. Operating outside standard temperature (message on display and/or alternating lights of Smart Pressure Sensor)	2. Always operate in standard operating temperatures (> 0 °C and < 40 °C).

Short stuttering sounds after 2 minutes or handle does not operate any timer.	Timer has been modified/deactivated via App.	Use App to change timer settings or perform factory reset (see App Trouble Shootings).

Handle does not charge.	1. Battery is at a very low charger level (0%); it may take up to 10-15min until display turns on.	1. Charge at least for 30min.
	2. Ambient temperature for charging is out of valid range (< 0 °C and > 40 °C).	2. Recommended ambient temperature for charging is 5 °C to 35 °C.
	3. Charger may not be (properly) connected.	3. Ensure charger is connected to mains voltage.

Rattling/loud noise during brushing or turning on.	1. Brush head may not be placed correctly onto the brush handle.	1. Check proper fit of brush head on handle. Small gap remains in between.
	2. Brush head may be worn.	2. Replace brush head.

The rechargeable toothbrush contains a radio module that operates in the 2.4 to 2.48 GHz band with a maximum power of 1mW. Hereby, Braun GmbH declares that the radio equipment types 3758, 3771, 3765, 3754, 3764, 3762 and 3767 are in compliance with Directive 2014/53/EU. The full text of the EU declaration of conformity is available at the following internet address: www.oralb.com/ce.

Documents / Resources



[Oral-B iO Series IO9 M9.4B2.2A BK 9 Connected Rechargeable Electric Toothbrush](#) [pdf] Instruction Manual
iO Series, IO9 M9.4B2.2A BK, 9 Connected Rechargeable Electric Toothbrush

Related Manuals / Resources

[Oral-B Electric Toothbrush Tips and Care](#)

How to Clean Your Electric Toothbrush Because one of the main purposes of a toothbrush is to remove...



[Oral B Smart Bluetooth Toothbrush Instructions](#)

Oral-B® Smart Bluetooth Toothbrush Instructions Description Brush head Pressure sensor light On/off button (mode selection) Charge indicator...

[Xiaomi 6934177713095 T500 Smart Electric Toothbrush User Manual](#)

6934177713095 T500 Smart Electric Toothbrush



[Oral-B iO Series 9 Rechargeable Electric Toothbrush User Manual](#)

DE AT 00 800 27 28 64 63 Description 1 Brush head 2 Brush head identification symbol 3...

Leave a comment

Your email address will not be published.

Comment

Name

Email

Website

☐ Save my name, email, and website in this browser for the next time I comment.

[Manuals+](#).

- [home](#)
- [privacy](#)