

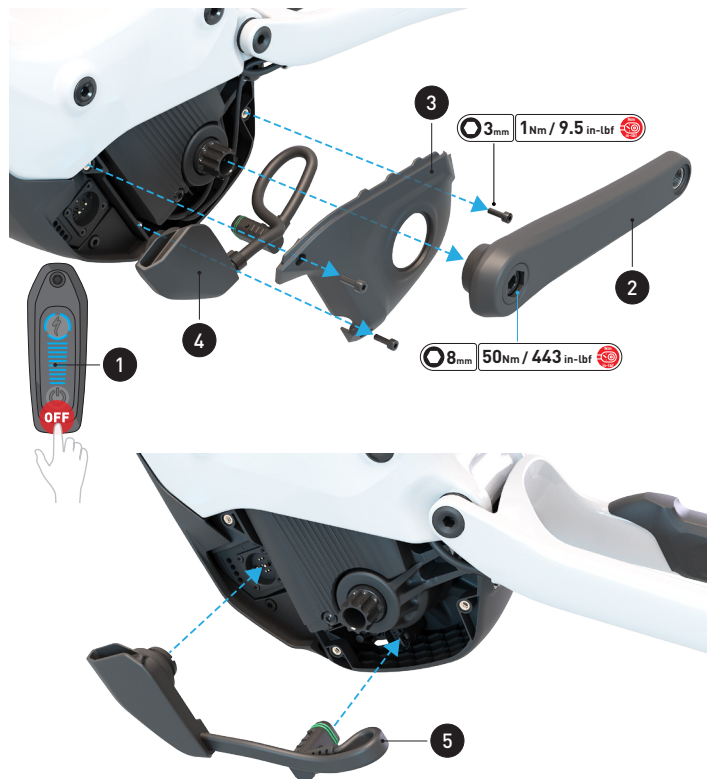
SERVICE PART GUIDE

Levo Gen 2 Motor Battery Cable

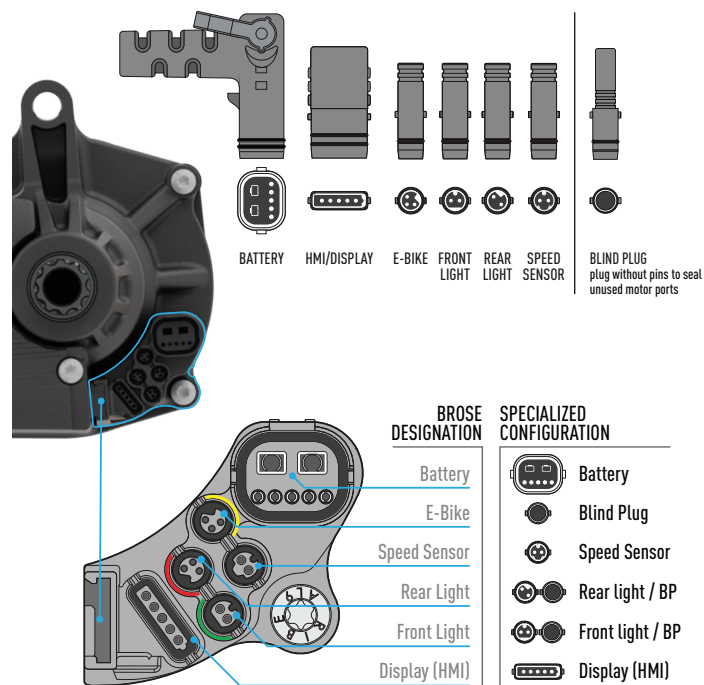
S226800018



1. PART



2. MOTOR PORT DIAGRAM



3. SERVICE PART KIT CONTENTS

Part	Description	Spec	Torque
S2268000018	ELE WIRING, LEVO (GEN.2), MOTOR-BATTERY HARNESS, 150MM	N/A	N/A



WARNING! This Service Part Guide is intended for professional bicycle mechanics. All assembly of Service parts should be carried out by an Authorised Specialized Retailer.
If you are unsure about any of the steps required to complete the installation, contact Specialized Rider Care or visit your local Specialized Authorized Retailer.

4. VERSIONS

This part replaces part

S206800004 - ELE WIRING, LEVO (GEN.2), MOTOR-BATTERY HARNESS, 220MM LENGTH, W/O COVER

SPECIALIZED BICYCLE COMPONENTS 15130 Concord Circle, Morgan Hill, CA 95037 (408) 779-6229
0000199310_SP6_R1 08/23

We may occasionally issue updates and addendums to this document. Please periodically check www.specialized.com or contact Rider Care to make sure you have the latest version.

SPECIALIZED®

SPECIALIZED BICYCLE COMPONENTS

15130 Concord Circle, Morgan Hill, CA 95037 (408) 779-6229

0000199310 SPG R1