

Tuya ZigBee Smart Battery-Powered Roller Shade Motor

Instruction Manual



Content

Instruction Manual	1
User Notice	3
Motor Power-On & Charging Instructions	3
Motor Control Buttons Guide	4
Preparation Before Connecting the Motor to the Mobile App	4
Steps to Connect the ZigBee Motor to the Mobile App	5
Method to Set Limits for the Motor in the APP	5
1.Set Upper Limit	5
2.Set Lower Limit	5
Remove Upper Limit in the app	6
Remove Lower Limit in the app	6
How to change the direction of the motor in the APP?	6
How to Quickly Clear All Travel Limits on the Motor?	6
Remote Control Buttons Guide	7
How to Pair the Remote Control with the Motor	8
How to Delete the Paired Remote Control?	8
How to Set Limits with the Remote Control?	8
How to Delete Limits with Remote Control?	9
How to Change Motor Direction with Remote Control?	10
Method to Unlock or Lock Channel Numbers on the Remote Control	11
Switching Jog/Continuous Mode with Remote	11
Delete the Motor From the Remote Controller	11
Delete All Motors From the Remote Controller	12
Unbind All Remotes from The Motor	12
Wake Up and Enter Pairing Mode with Remote Control	12
Use the remote to set the motor to pairing mode	13
Troubleshooting Guide	13
How to Enter Pairing Mode?	13

User Notice

Charging & Power:

- Use only 5V/2A USB charger (not included)
- Warning: Higher voltage may cause permanent battery damage

System Requirements:

- Compatible exclusively with Tuya Smart/Smart Life Apps
- Requires Tuya ZigBee Gateway (sold separately)

Installation Specifications:

- Designed for 38mm (± 0.5 mm) slotted aluminum tubes
- Maximum shade dimensions: 2.5m (W) \times 3m (H)
- Maximum fabric load capacity: 6.0kg

Important Safety Notice:

Exceeding specified limits may result in:

- Motor malfunction
- Reduced product lifespan
- Voided warranty

Motor Parameters:

Torque: 1.3N \cdot m

Rated Speed: 25RPM

Max. Current: 1.4A

Rated Power: 12W

Input Voltage: DC 5V

Operating Frequency: 433.92MHz

Motor Housing Diameter: 25mm \pm 0.2mm

Protection Rating: IP44

Battery Capacity: 3200mAh/7.2V

Motor Power-On & Charging Instructions

Power On: Slide switch to "ON" position before operation

Power Off: Slide switch to "OFF" position when not in use for >7 days/During extended storage/Before charging. Ensure complete motor shutdown before charging.

Battery Protection: Critical: Prevent battery over-discharge. Extended discharge may cause permanent battery damage: Motor failure/Voided warranty.

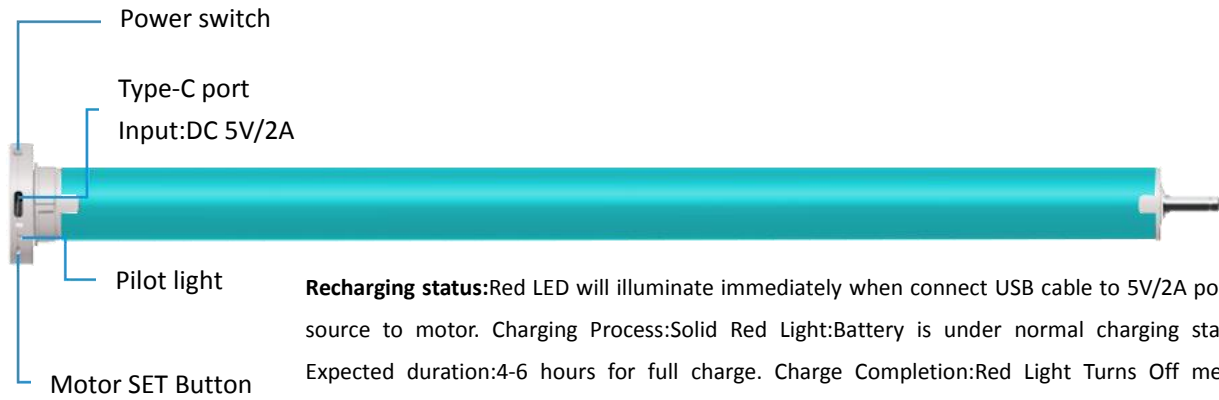


Power switch status: on



Power switch status: off

Motor Control Buttons Guide



Recharging status:Red LED will illuminate immediately when connect USB cable to 5V/2A power source to motor. Charging Process:Solid Red Light:Battery is under normal charging status. Expected duration:4-6 hours for full charge. Charge Completion:Red Light Turns Off means battery reaches 100% capacity, you can disconnect the power.

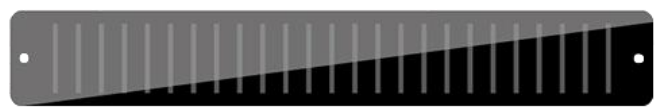
**Type-C charging cable
(included)**



**Power adapter
(not included)**



**Solar charging board
(not included)**



Precautions

- Avoid using outdoors, at high temperatures, and in direct sunlight.
- Do not drop, disassemble, or repair components.
- Avoid contact with volatile chemicals (e.g., thinner, benzene) to prevent fire or damage.
- Use only accessories compatible with each motor model.
- Make connections according to the wiring diagram.
- Do not allow water to contact the tubes, motors, and main components to prevent malfunction, leakage, or fire.

Preparation Before Connecting the Motor to the Mobile App

Steps:

1.Download the App

- Download the "Tuya Smart" app or "Smart Life" app on your phone. You can scan the QR code below to download.

2.Register and Log In:

- Create an account and log in to the app.

3.Set Up the ZigBee Gateway:

- Prepare a Tuya ZigBee Gateway and connect it to the "Tuya Smart" app or "Smart Life" app.

4.Power On the Motor:

- Slide the switch to the "ON" position to turn on the motor's power.

Scan for "Tuya Smart" APP



Scan for "Smart Life" APP



Steps to Connect the ZigBee Motor to the Mobile App

Steps:

1.Open the ZigBee Gateway in the App:

- In the app, locate the Tuya ZigBee Gateway that is already connected and open its zigbee interface.

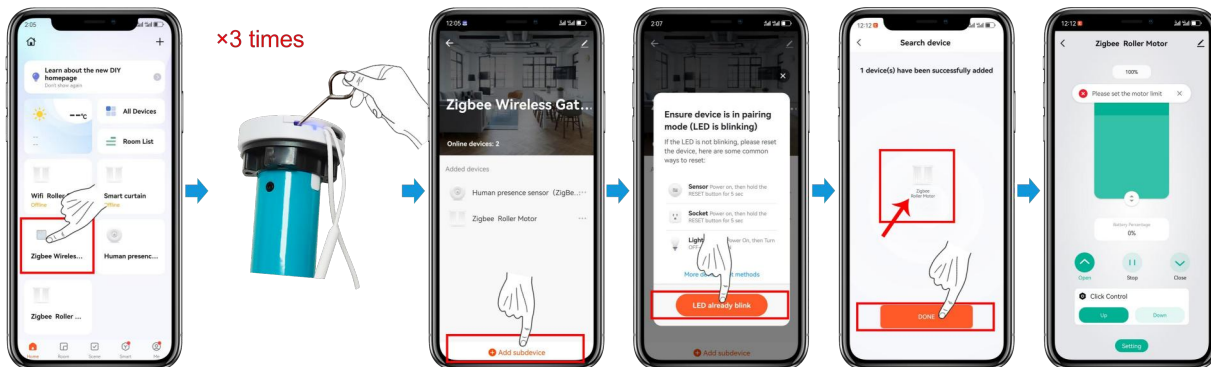
2.Activate Pairing Mode on the Motor:

- Quickly press the motor's "SET" button 3 times (each press will trigger a "beep" sound).
- The motor's LED light will start fast blue blinking, indicating it is in pairing mode.

3.Add the Motor as a Subdevice:

- Return to the ZigBee Gateway interface in the app and click "Add Subdevice".
- Wait for the app to detect the motor, then click "DONE" to complete the pairing process.

Steps for connecting to the mobile APP.

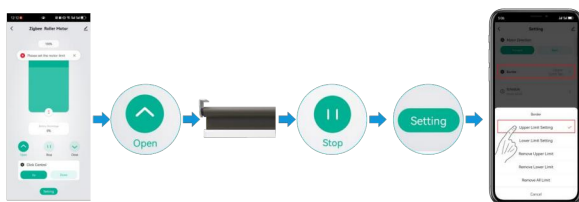


- ① Open the paired Tuya ZigBee gateway in the APP.
- ② Fast Press "SET" 3 times. (Must finish within 5 seconds).
- ③ Click "Add Subdevice" in the gateway app page.
- ④ Click "LED already blink."
- ⑤ Click "DONE" when motor is found.
- ⑥ Pairing complete.

Method to Set Limits for the Motor in the APP

1.Set Upper Limit

- ① In the app, tap the "Open" button to move the motor to your desired upper limit position
- ② Once the motor reaches the desired position, tap the "Stop" button
- ③ Navigate to "Setting" > "Border" > "Upper Limit Setting" in the Border menu. The upper limit is now successfully set.



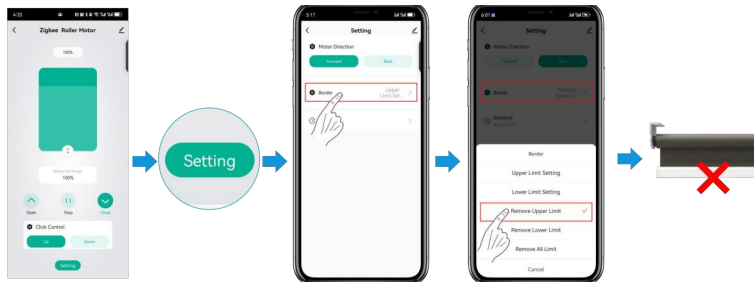
2.Set Lower Limit

- ① In the app, tap the "Close" button to move the motor to your desired lower limit position
- ② Once the motor reaches the desired position, tap the "Stop" button.
- ③ Navigate to "Setting" > "Border" > "Lower Limit Setting" in the Border menu. The upper limit is now successfully set.



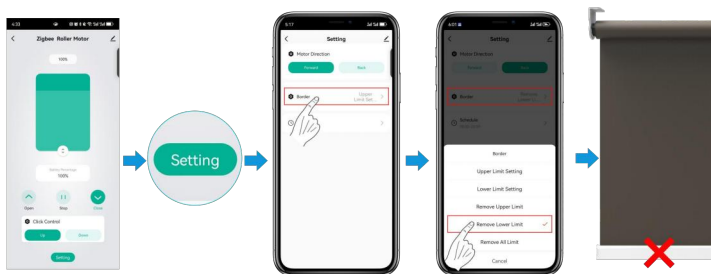
Remove Upper Limit in the app

- ① In the app, select the motor you want to remove the upper limit for.
- ② Tap "Setting"> "Border"> "Remove Upper Limit". The upper limit is now successfully removed.



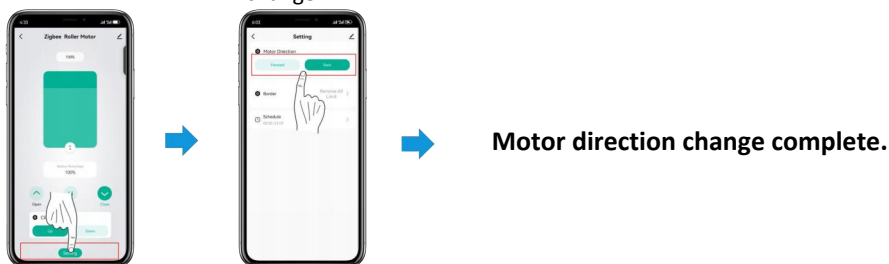
Remove Lower Limit in the app

- ① In the app, select the motor you want to remove the lower limit for.
- ② Tap "Setting"> "Border"> "Remove Lower Limit". The lower limit is now successfully removed.



How to change the direction of the motor in the APP?

- ① Click "Setting" in the motor APP
- ② Choose the direction you want to change:

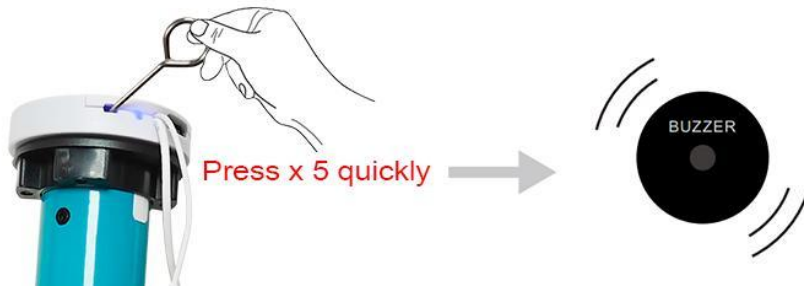


How to Quickly Clear All Travel Limits on the Motor?

If you find that the motor does not operate or does not move to the desired position after powering on, you can use 2 methods to clear all travel limits and reconfigure them. There are two methods to remove all the limits on the motor.

Method 1: Clear All Limits on the Motor

1. Quickly press the "SET" button **5 times**. The motor will **beep** each time.
2. The LED will flash rapidly, indicating that all limits have been successfully cleared.



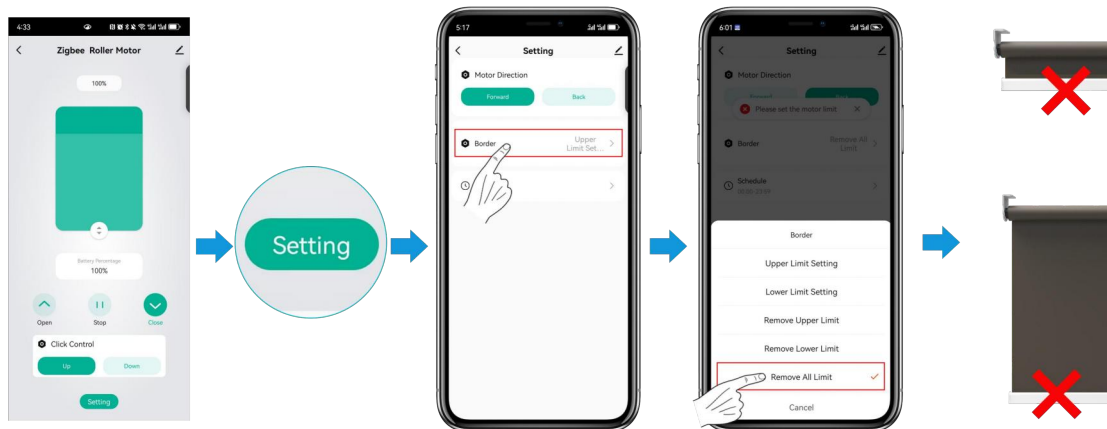
Press setup button 5 times.
(Must finish within 3 seconds.)

Method 2: Clear All Limits with the App

Use the App: Once the motor is successfully connected to the App, you can quickly clear all travel settings via the mobile app to proceed with new limit travel configuration.

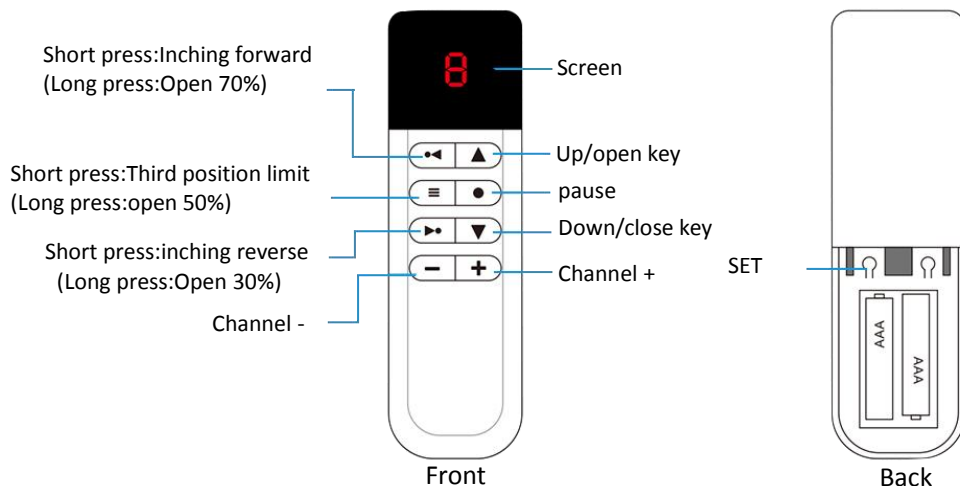
Steps:

1. In the app, select the motor for which you want to remove all limits.
2. Tap "Setting" > "Border" > "Remove All Limits".
3. All limits have now been successfully removed.



Remote Control Buttons Guide

(Remote control is optional, not included by default.)



Remote Control Specifications

Number of Channels: 9

Mode of operation: Keystroke

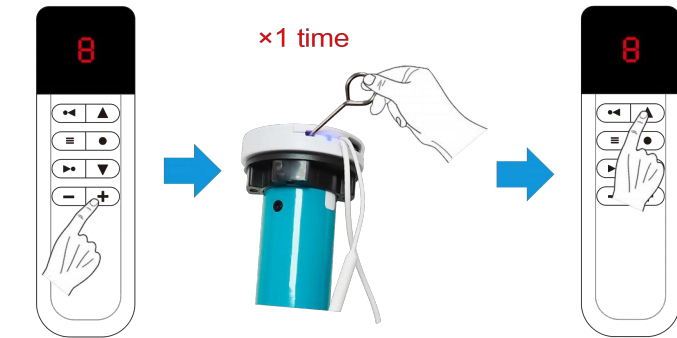
Transmission Frequency: 433.92 MHz

Battery: 2 x AAA (not included)

Encoding Method: Rolling Code

How to Pair the Remote Control with the Motor

- ① Select your desired channel number (optional 1-9) by press "-" or "+".
- ② Press the "SET" button on the motor once. You will hear a "beep" sound
- ③ Press the "▲" button on the remote control once. You will hear another "beep", indicating that the pairing is complete.



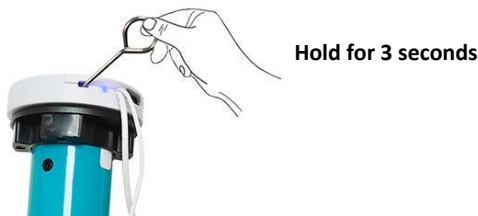
Notes:

- If pairing fails, repeat the steps or SET both the motor and remote before trying again.
- Ensure the remote control has fresh batteries for optimal performance.

- ①. Press "+/-" to select channel.
- ② Press the "SET" button on the motor once, you'll hear a "beep"
- ③ Press "▲" button on the remote once, you'll hear another "beep" and the pairing is complete.

How to Delete the Paired Remote Control?

Press and hold the motor's "SET" button for **3 seconds**. A "beep" sound will confirm that the remote control has been successfully deleted



Notes:

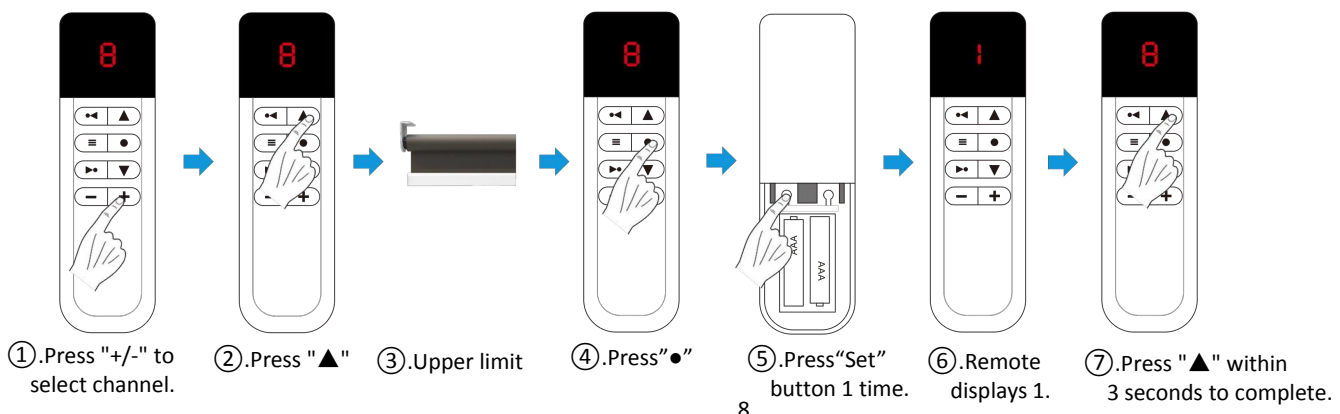
- This process will delete all paired remote controls. You will need to re-pair any remotes you still want to use.
- Ensure the motor is powered on during this process.

How to Set Limits with the Remote Control?

Note: If limits are already set via the app, there is no need to set them again with the remote. Limits are synchronized between the app and the remote.

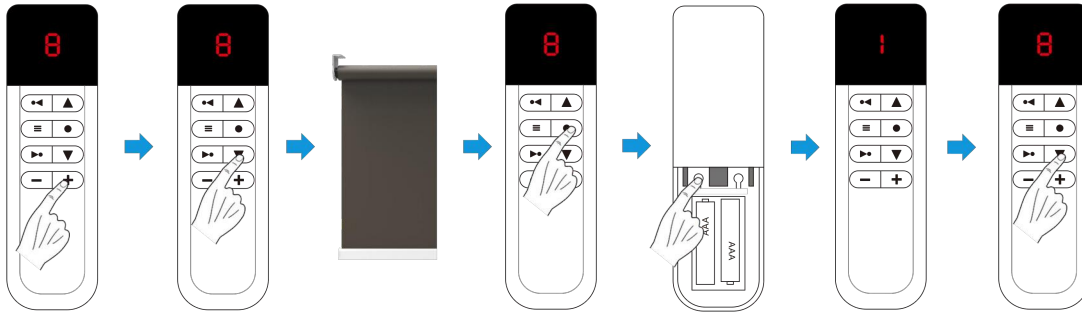
Upper Limit Setting

1. Press the "+/-" buttons to select the desired channel.
2. Press the "▲" button to move the motor to the desired upper limit position.
3. Press the "●" button, then press "Set" once. The screen will display "1".
4. Within 3 seconds, press the "▲" button again to confirm and complete the upper limit setting.



Lower Limit Setting

1. Press the "+/-" buttons to select the desired channel.
2. Press the "▼" button to move the motor to the desired lower limit position.
3. Press the "●" button, then press "Set" once. The screen will display "1".
4. Within 3 seconds, press the "▼" button again to confirm and complete the lower limit setting.



- ①. Press "+/-" to select channel.
- ②. Press "▼"
- ③. Lower limit
- ④. Press "●"
- ⑤. Press "set" button 1 time.
- ⑥. Remote shows 1.
- ⑦. Press "▼" within 3 seconds to complete.

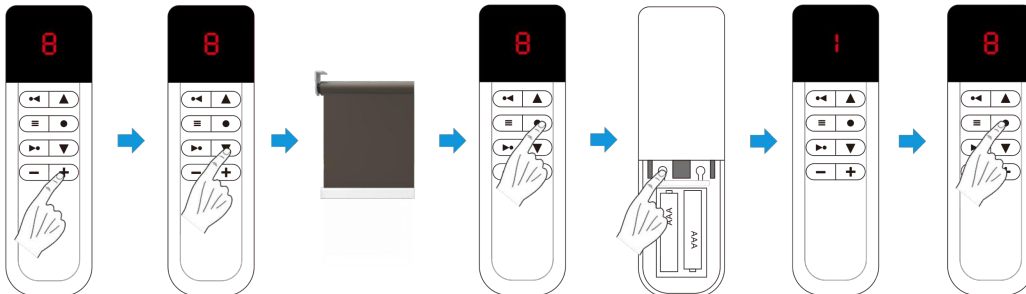
Third Limit Setting

Note: To set the third limit, you must first set the upper and lower limits for the motor.

The third limit position allows you to adjust the blinds motor to any preferred position, not necessarily the middle position.

Steps:

1. Press the "+/-" buttons to select the desired channel.
2. Press the "▲" or "▼" button to move the curtain to the desired third limit position.
3. Press the "●" button, then press "Set" once. The screen will display "1".
4. Within 3 seconds, press the "●" button again to confirm and complete the third limit setting.
5. To stop at the third limit, press and hold the "●" button.

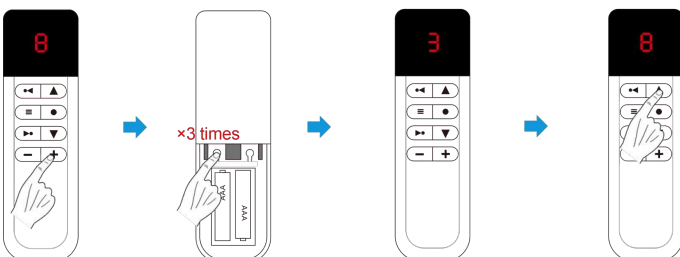


- ①. Press "+/-" to select channel.
- ②. Press "▲"
- ③. Third Limit
- ④. Press "●"
- ⑤. Press "set" button 1 time.
- ⑥. Remote shows 1.
- ⑦. Press "●" within 3 seconds to complete.

How to Delete Limits with Remote Control?

Delete Upper Limit

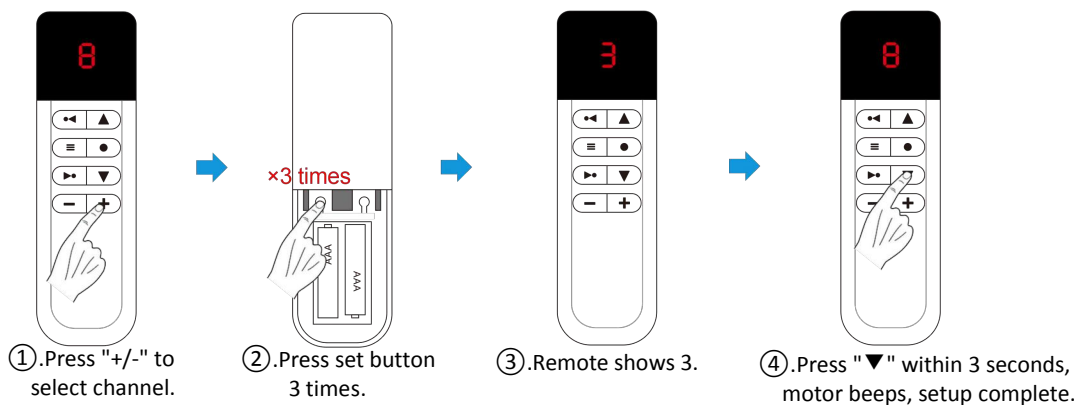
- ① Use "+" or "-" to select channel.
- ② Press "SET" button 3 times; remote shows "3." Press "▲" within 3 seconds; motor beeps, upper limit deleted.



- ①. Press "+/-" to select channel.
- ②. Press "SET" button 3 times.
- ③. Remote shows 3.
- ④. Press "▲" 1 time within 3 seconds

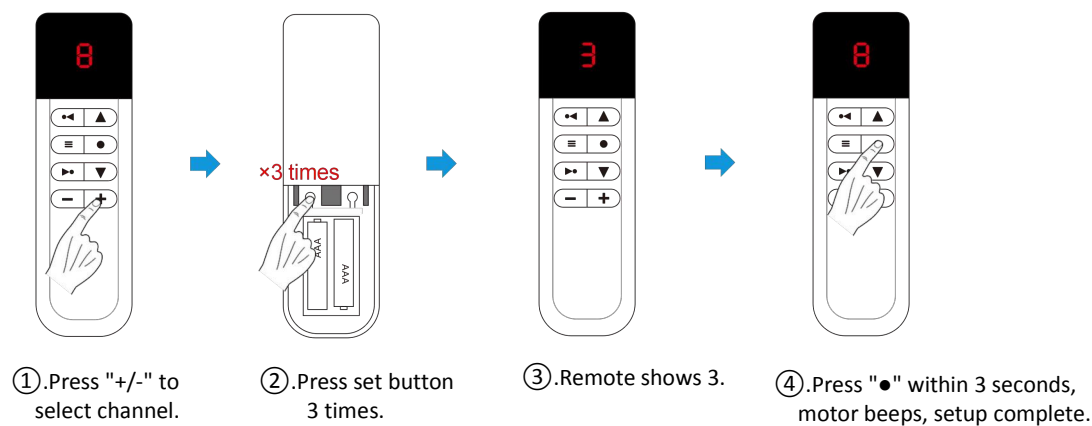
Delete Lower Limit

- ① Use "+" or "-" to select channel.
- ② Press "SET" button 3 times; remote shows "3." Press "▼" within 3 seconds; motor beeps, lower limit deleted.



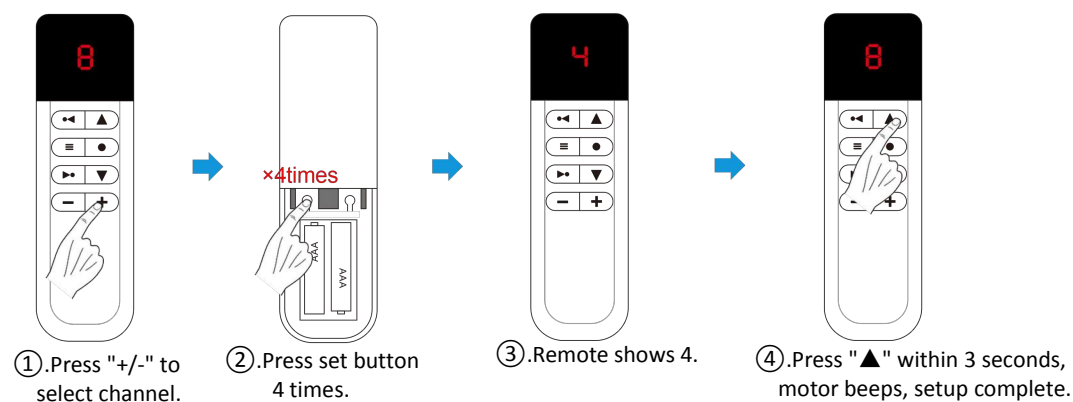
Delete Third Limit

- ① Use "+" or "-" to select channel.
- ② Press "SET" button 3 times; remote shows "3." Press "●" within 3 seconds; motor beeps, third Limit deleted.



How to Change Motor Direction with Remote Control?

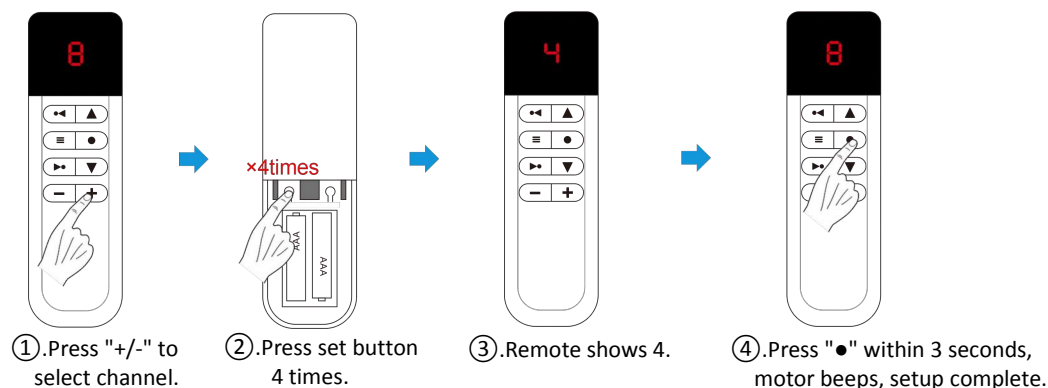
- ① Press the "+" or "-" button on the remote to select the motor channel number.
- ② Press the "SET" button on the back of the remote 4 times. The screen will display "4." Within 3 seconds, press "▲" on the remote. The motor confirms successful direction change with a single brief vibration (0.3s).



Method to Unlock or Lock Channel Numbers on the Remote Control

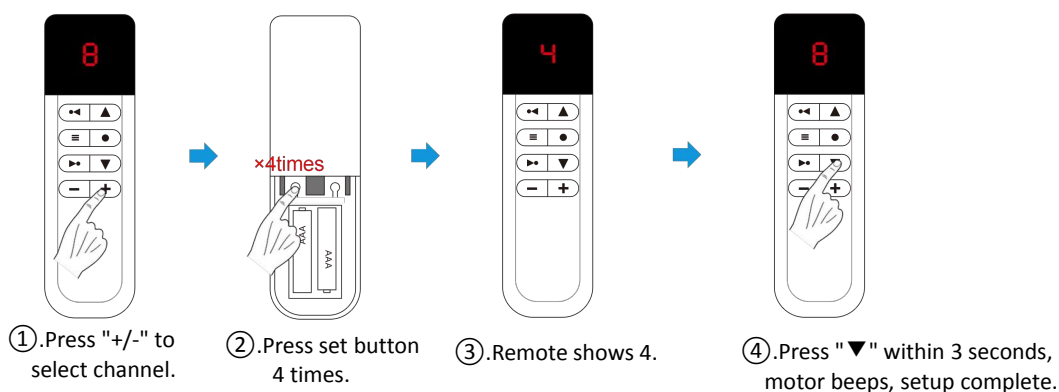
(The remote control has a total of 9 channels. If you do not want all of them, you can use this method to reduce the number of channels on the remote.)

- ① Press the "+" or "-" button to select the number of channels to set.
- ② Press the "SET" button 4 times (screen displays "4"), then press the "●" button within 3 seconds to confirm.



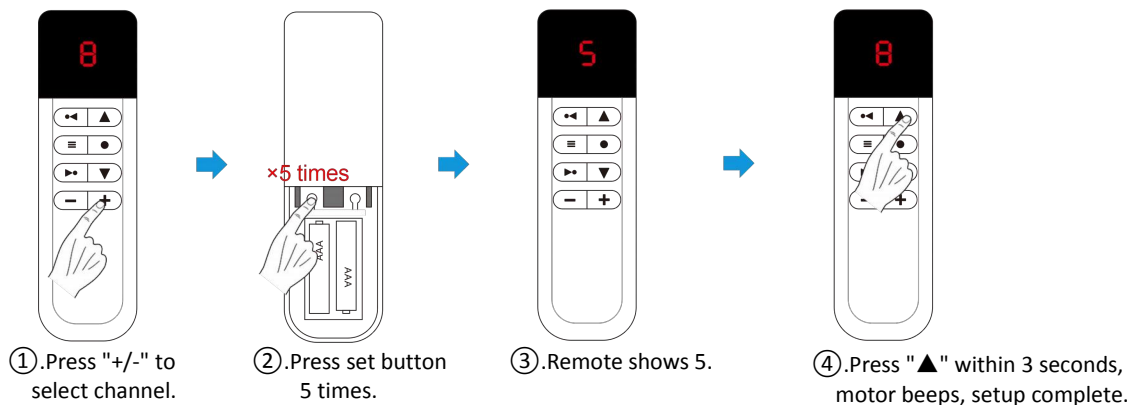
Switching Jog/Continuous Mode with Remote

- ① Press "+" or "-" to select the motor channel.
- ② Press "SET" 4 times (screen shows "4").
- ③ Press "▼" within 3 seconds. Motor beeps to confirm success.



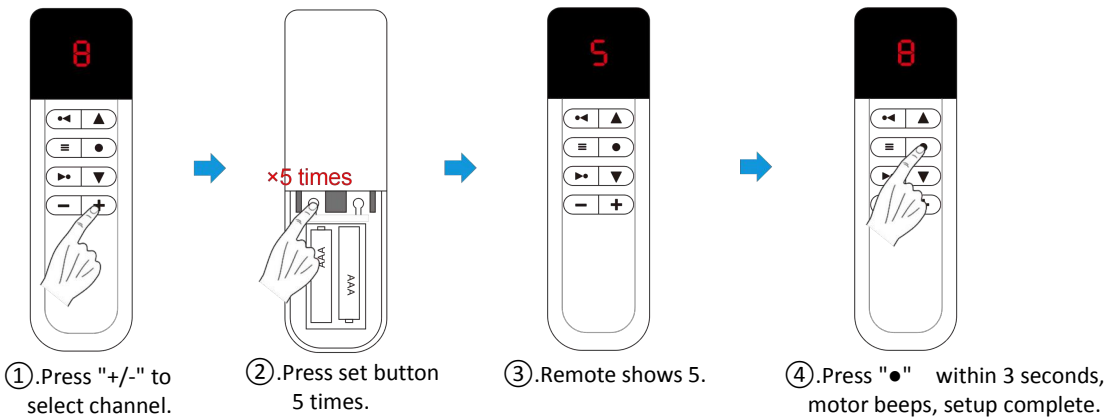
Delete the Motor From the Remote Controller

- ① Press the "+" or "-" button on the remote control to select the channel associated with the motor.
- ② Press the "SET" button 5 times (screen displays "5"), then press the "▲" button within 3 seconds. The motor will beep to confirm successful deletion.



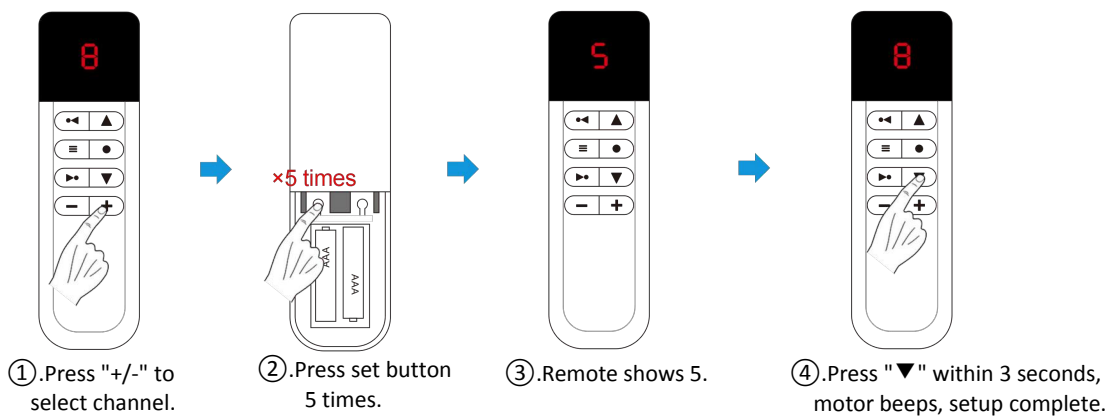
Delete All Motors from the Remote Controller

- ① Press "+" or "-" to select the motor channel.
- ② Press "SET" 5 times (screen shows "5"), then press "●" within 3 seconds. A beep confirms deletion.



Unbind All Remotes from The Motor

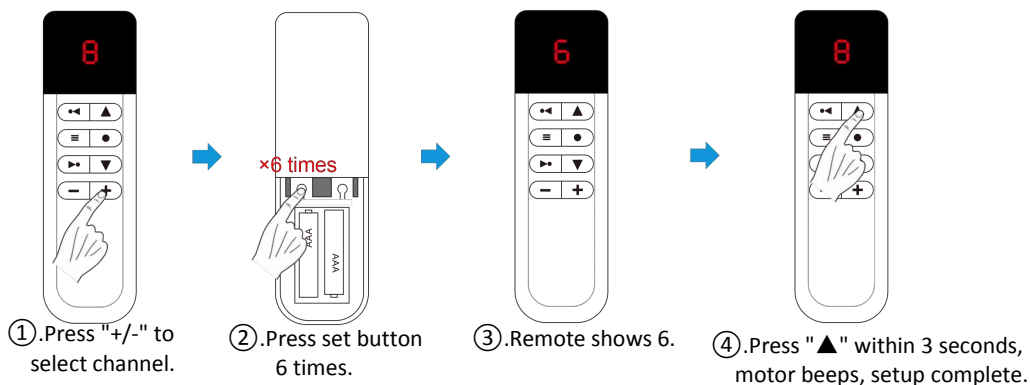
- ① Press "+" or "-" to select the motor channel.
- ② Press "SET" 5 times (screen shows "5"), then press "▼" within 3 seconds. A beep confirms deletion.



Wake Up and Enter Pairing Mode with Remote Control

(Equivalent to Pressing the Motor's Set Button Once)

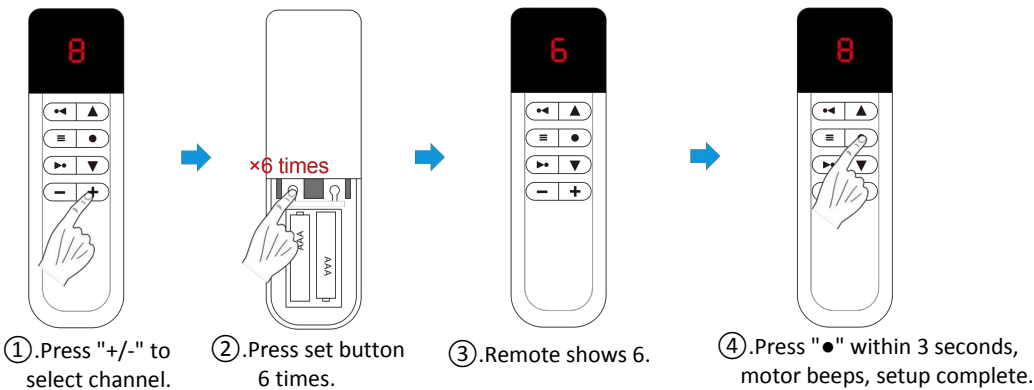
- ① Press "+" or "-" to select the motor channel.
- ② Press "SET" 6 times (screen shows "6"), then press "▲" within 3 seconds. A beep confirms success.



Use the remote to set the motor to pairing mode

(equivalent to pressing motor's set button 3 times)

- ① Press "+" or "-" to select the motor channel.
- ② Press "SET" 6 times (screen shows "6"), then press "●" within 3 seconds. A beep confirms pairing mode is activated.



Troubleshooting Guide

Recommended Actions for Motor Operation Interruption:

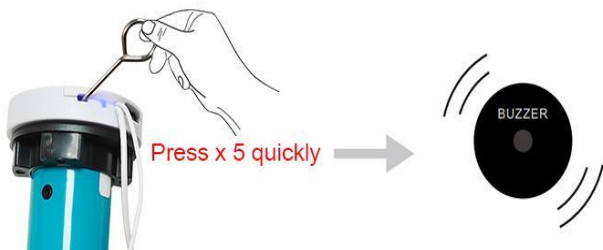
1. Check Power Connection and Charging Status:

Ensure the motor is properly connected to power and fully charged to guarantee normal operation.

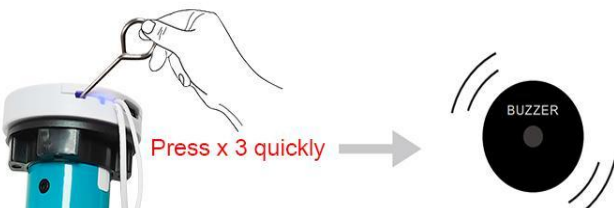
2. If the Motor Does Not Move:

If the motor is completely unresponsive, it is likely due to a improper travel limit issue. In this case, the user needs to clear the travel limits and reset them. **Refer to the following steps:**

- ① Clear Travel Limits: Quickly press the "SET" button 5 times to clear all limit settings.
SET Travel Limits: Follow the user manual to reconfigure the travel limits for proper operation.



3. How to Enter Pairing Mode?



FCC Statement

This device complies with part 15 of the FCC rules. Operation is subject to the following two conditions: (1) this device may not cause harmful interference, and (2) this device must accept any interference received, including interference that may cause undesired operation.

Caution: Changes or modifications not expressly approved by the party responsible for Compliance could void the user's authority to operate the equipment.

NOTE: This equipment has been tested and found to comply with the limits for a Class B digital device, pursuant to part 15 of the FCC Rules. These limits are designed to provide reasonable protection against harmful interference in a residential installation. This equipment generates uses and can radiate radio frequency energy and, if not installed and used in accordance with the instructions, may cause harmful interference to radio communications. However, there is no guarantee that interference will not occur in a particular installation. If this equipment does cause harmful interference to radio or television reception, which can be determined by turning the equipment off and on, the user is encouraged to try to correct the interference by one or more of the following measures:

- Reorient or relocate the receiving antenna.
- Increase the separation between the equipment and receiver.
- Connect the equipment into an outlet on a circuit different from that to which the receiver is connected.
- Consult the dealer or an experienced radio/TV technician for help important announcement .

Radiation Exposure Statement

To comply with FCC RF exposure compliance requirements, this grant is applicable to only mobile configurations. The antennas used for this transmitter must be installed to provide a separation distance of at least 20 cm from all persons and must not be co-located or operating in conjunction with any other antenna or transmitter.