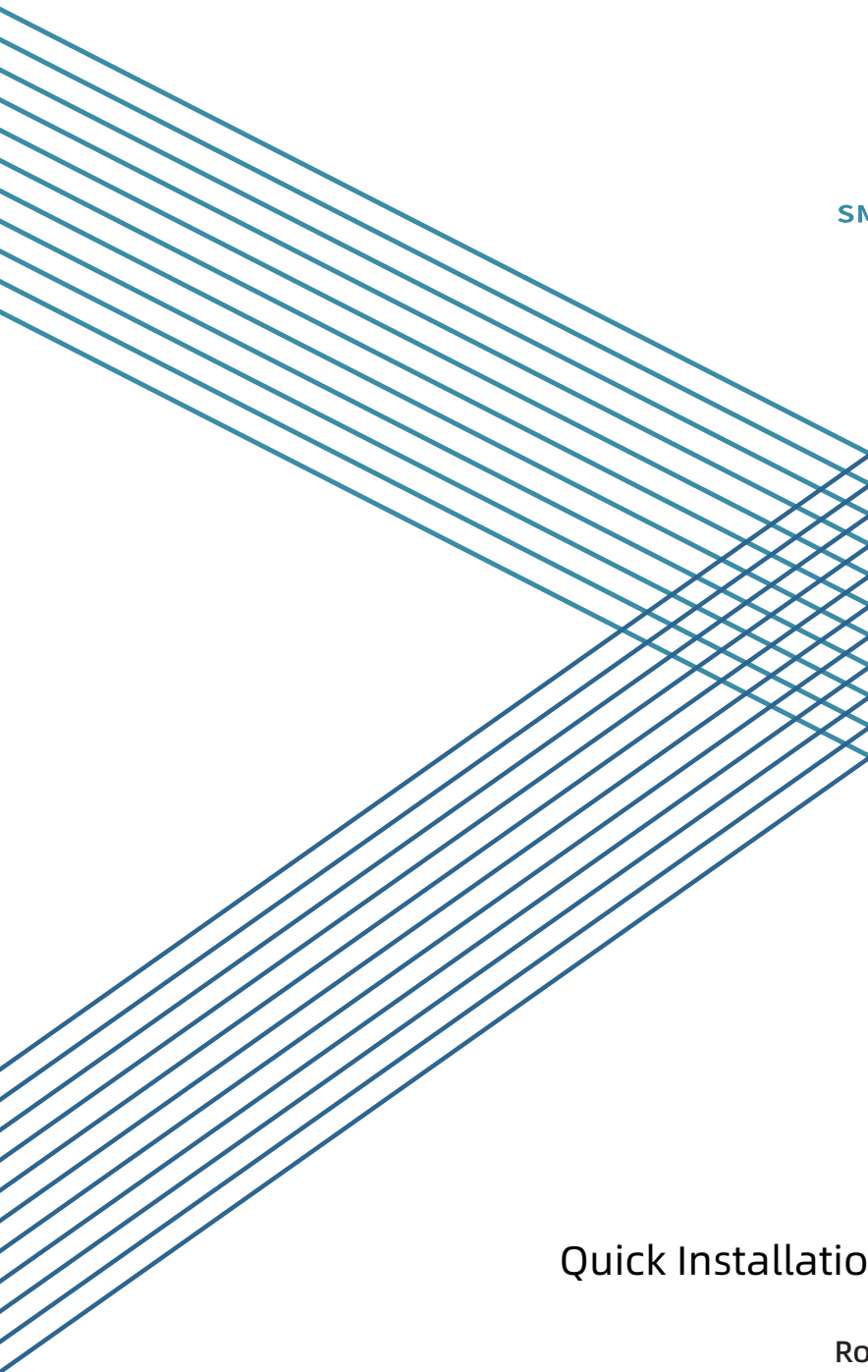


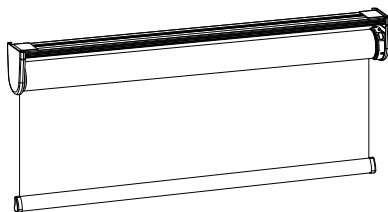


SMARTWINGS

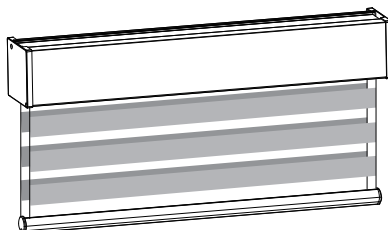


# Quick Installation Guide

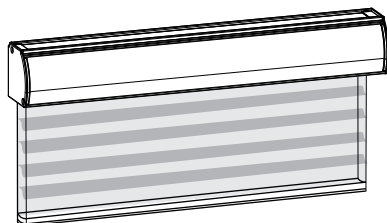
Roller Shade  
Zebra Shade



Deco Bar

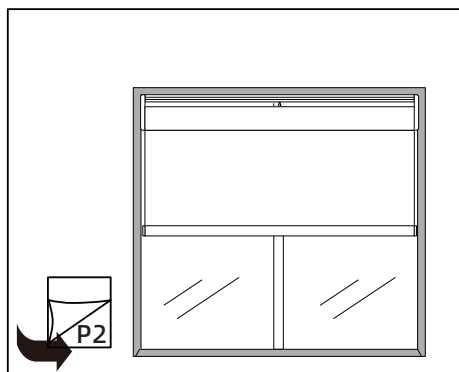


Square

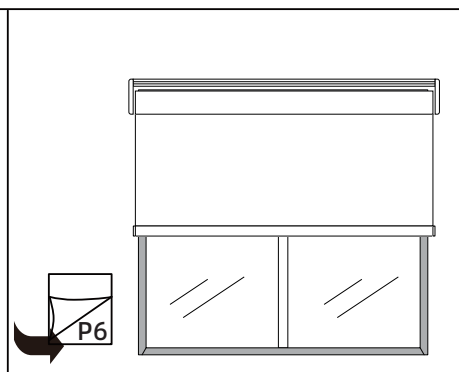


Cassette with Fabric Insert

### Inside Mount



### Outside Mount



The following operations are taken the shade with deco bar as example.

**TABLE OF CONTENTS**

**1. Preparation.....1**

**2. Shade Installation.....2**

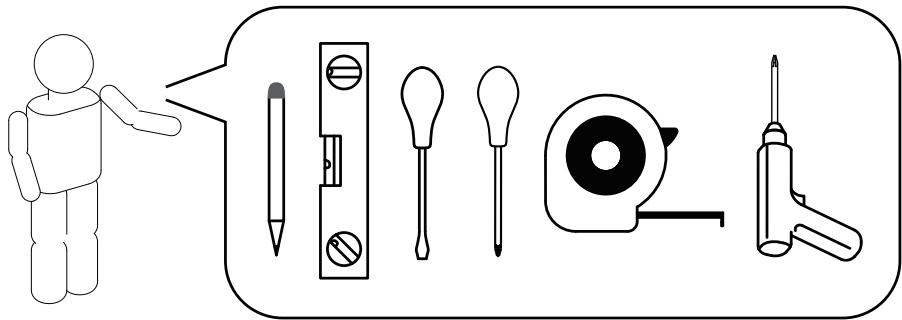
    2.1 Inside Mount.....2

    2.2 Outside Mount.....6

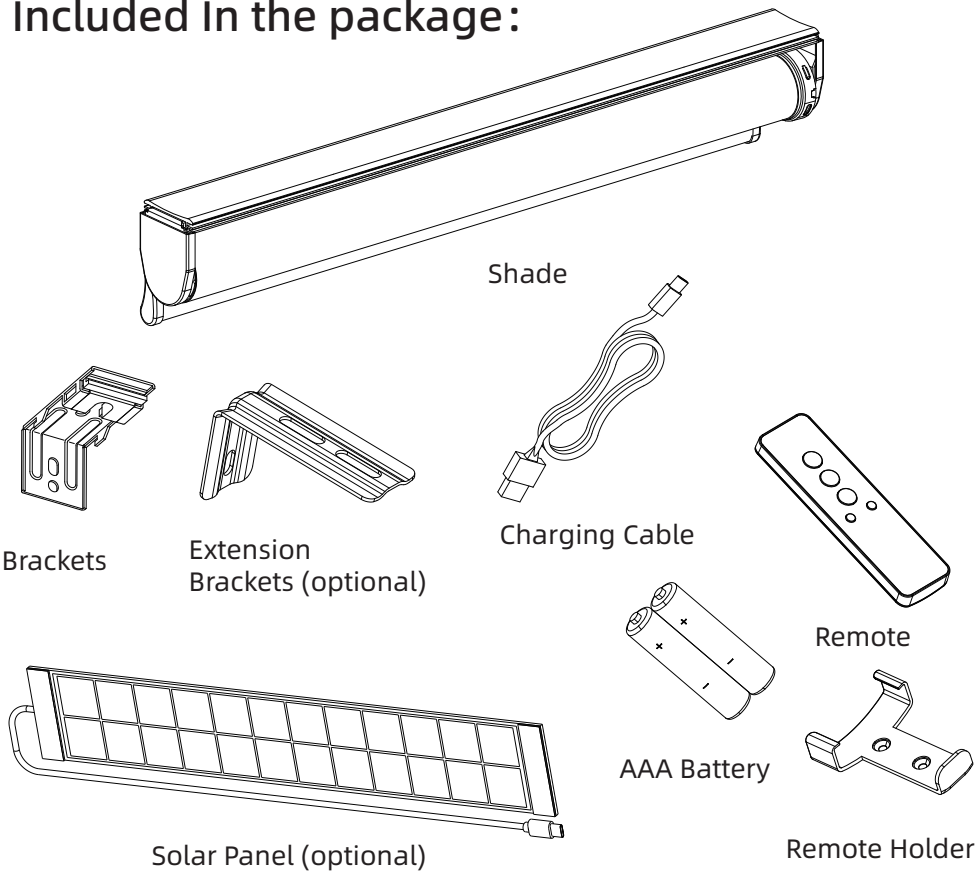
**3. Shade Charging.....11**

**4. Remote Holder Installation.....16**

# Required Tools for Installation:



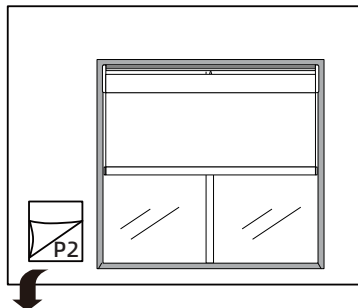
# Included In the package:



# Shade Installation

Detailed instructions for installation are vary. If you prefer an inside mount, proceed to Page 2. For an outside mount, go to Page 6. Before installing the shade, it is necessary to install the brackets to the shade and position them correctly to determine where the brackets will be mounted on the wall.

## 2.1 Inside Mount

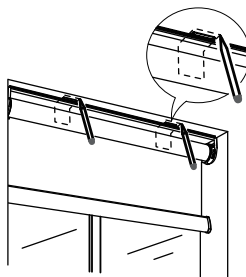
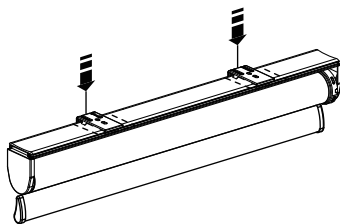


### Top Mount

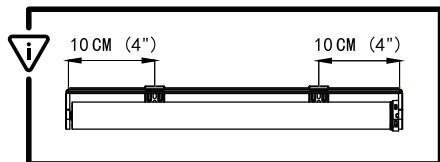
If you opt for an inside mount and your window frame width allows, top mounting is the optimal choice.

#### Step 1 Mark position

After installing the brackets at the correct position on the shade, determine the position for the brackets on the wall and the shade, then mark it on them.



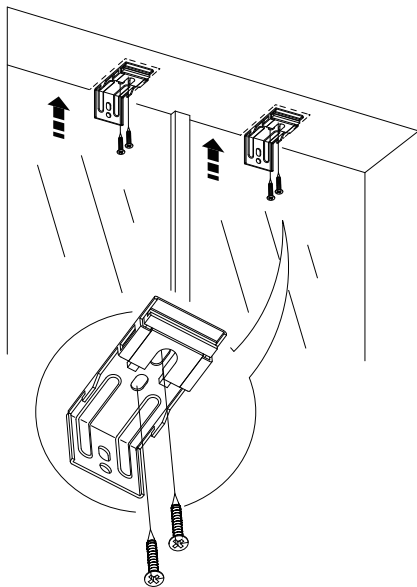
**Note:** The optimal position for the side caps on both sides to the center of the brackets is 10cm(4" ).



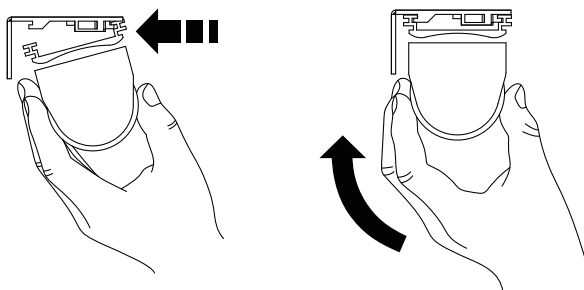
# Shade Installation

## Step 2 Install the brackets

Detach the installation brackets from the Deco bar. Then install the brackets on the wall at the pre-marked locations and secure them in place with screws.



## Step 3 Install the shade



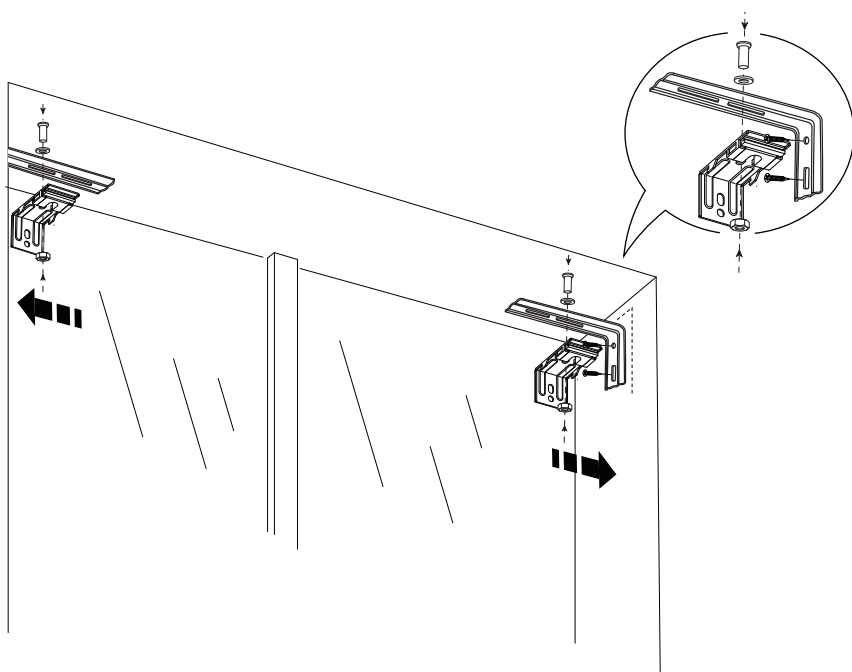
# Shade Installation

## Side Mount

If you choose an inside mount but find that the window frame depth is insufficient for bracket installation, consider opting for a side mount.

### Step 1 Install brackets

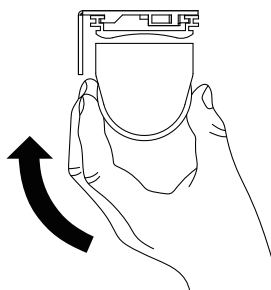
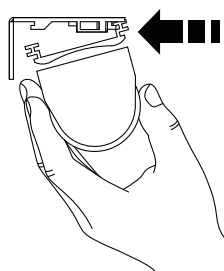
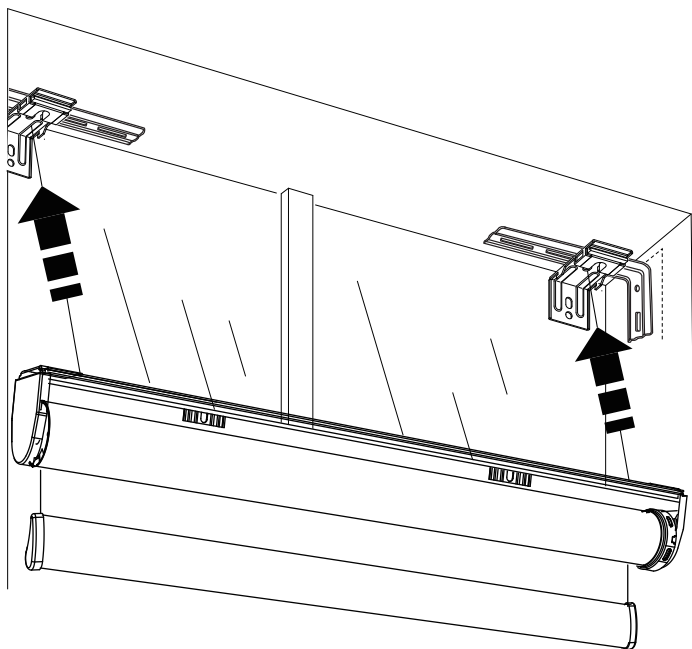
Determine the position for the extension brackets on the wall and install the extended brackets on both sides of the wall. Then fixed the installation brackets and extension brackets with screws.



**Note:** To prevent light leakage at the top of the shades after installation, ensure that the extended brackets are installed as close to the top of the window frame as possible. Also, ensure that the brackets on both the left and right sides are positioned horizontally.

## Shade Installation

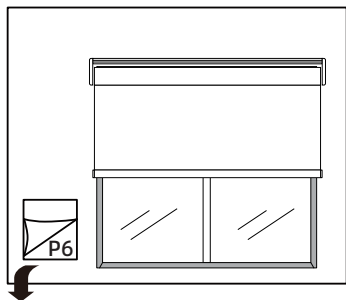
### Step 2 Install the shade





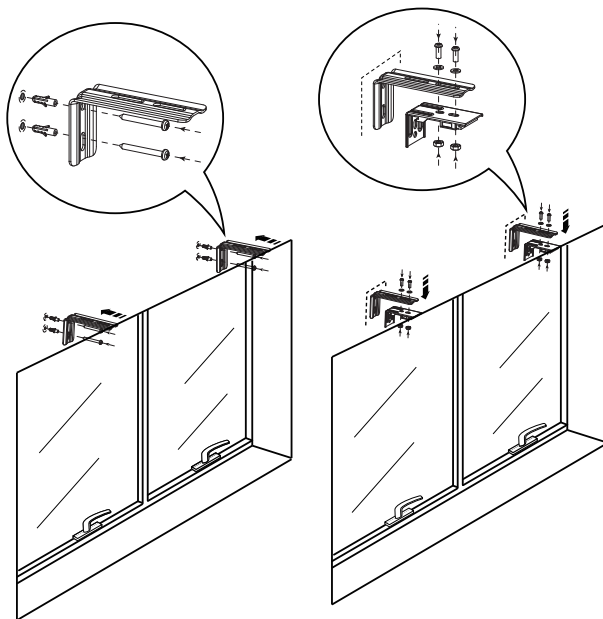
# Shade Installation

## 2.2 Outside Mount



### Wall Mount

If you opt for an outside mount and the space allows, top mounting is the optimal choice.

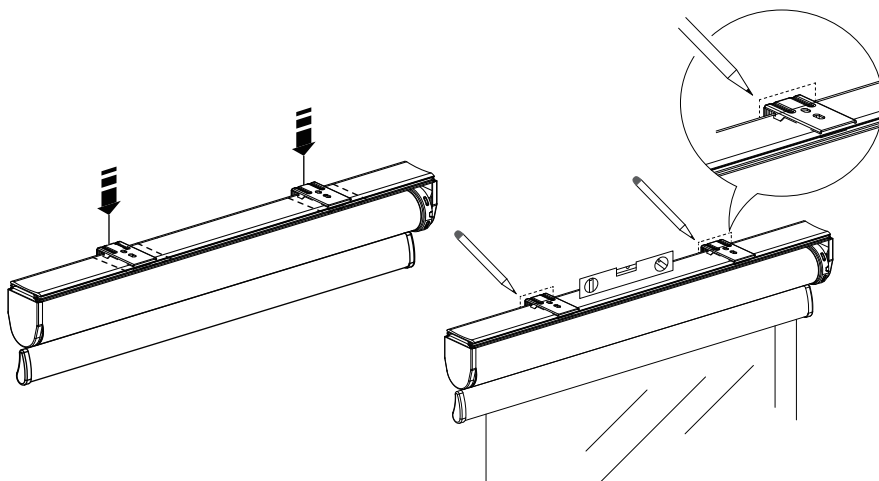


Note: If your window has handles or other special features, you may need to use extension brackets.

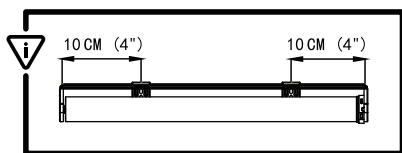
# Shade Installation

## Step 1 Mark the position

After installing the brackets at the correct position on the shade, place the shade above the window frame. Use a level to check if the shade is horizontally aligned. Finally, mark on the wall the position where the brackets will be installed.



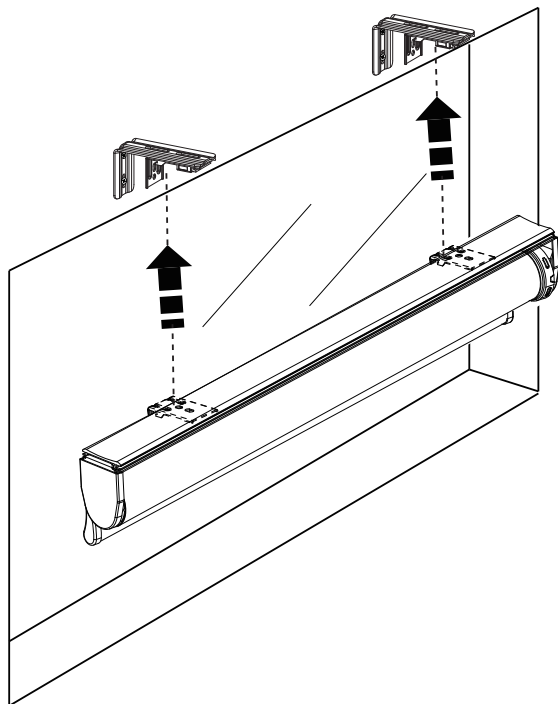
Note: The optimal position for the side caps on both sides to the center of the brackets is 10cm(4" ).



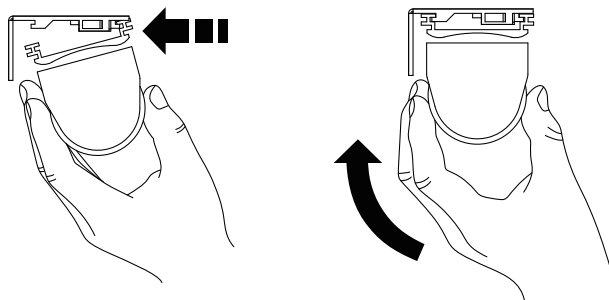
## Shade Installation

### Step 2 Install the brackets on the wall

Remove the brackets on the Deco bar and secure them in place using screws at the marked locations before.



### Step 3 Install the shade



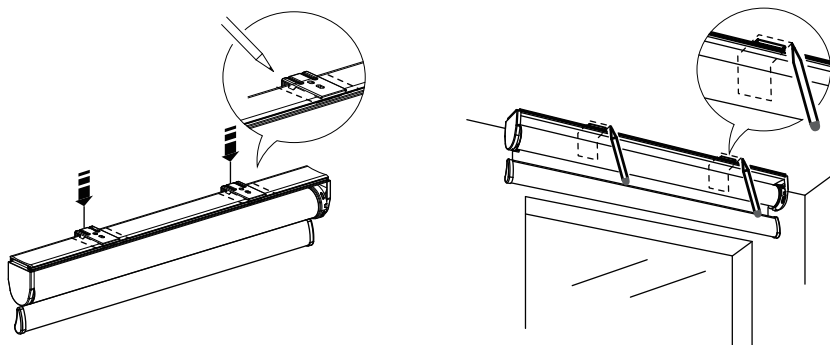
# Shade Installation

## Ceiling mount

If you opt for an outside mount and the space is insufficient for bracket installation, top mounting is the optimal choice.

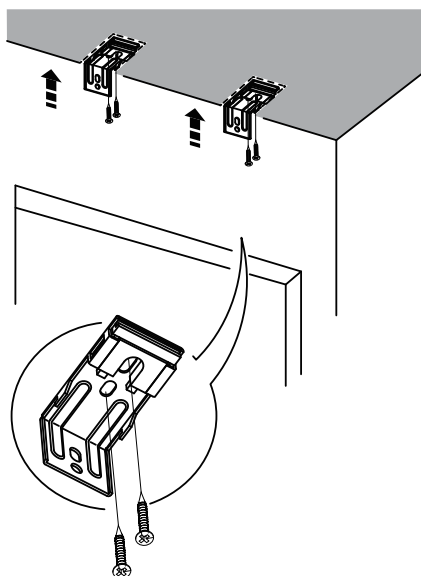
### Step 1 Mark position

After installing the brackets at the correct position on the shade, place the shade on the ceiling, mark on the ceiling the position where the brackets will be installed.



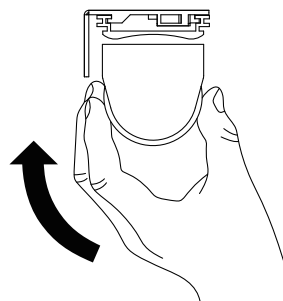
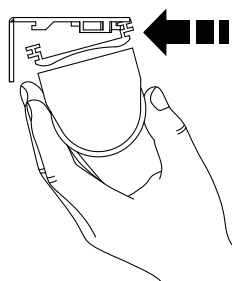
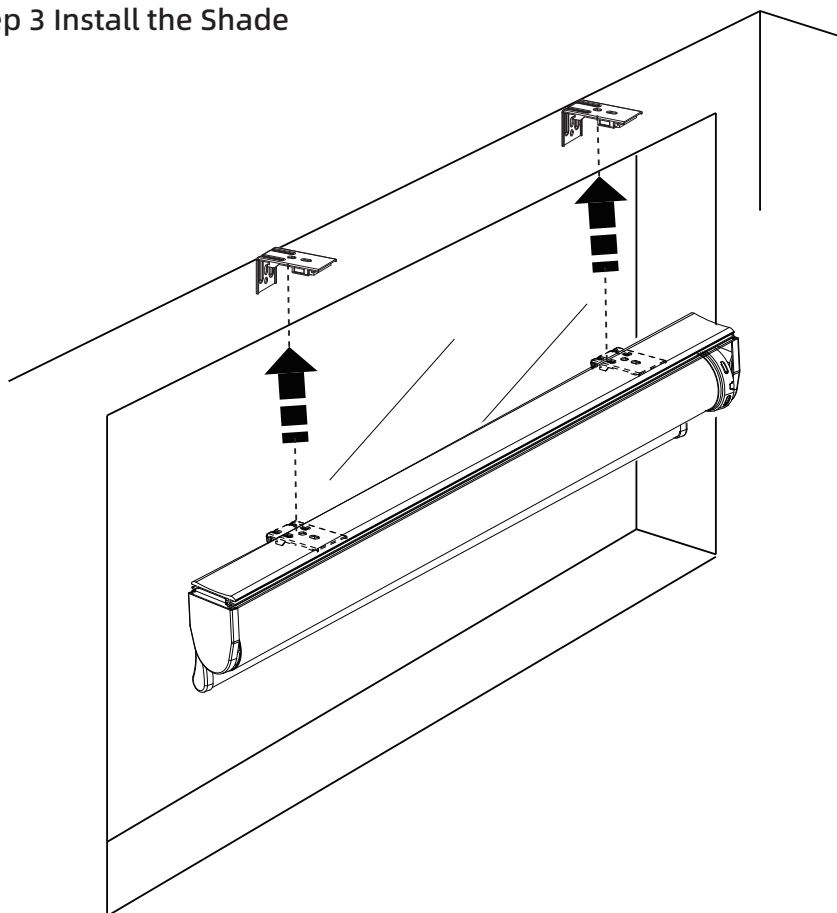
### Step 2 Install the bracket

Install the brackets at the locations that marked on the wall.



## Shade Installation

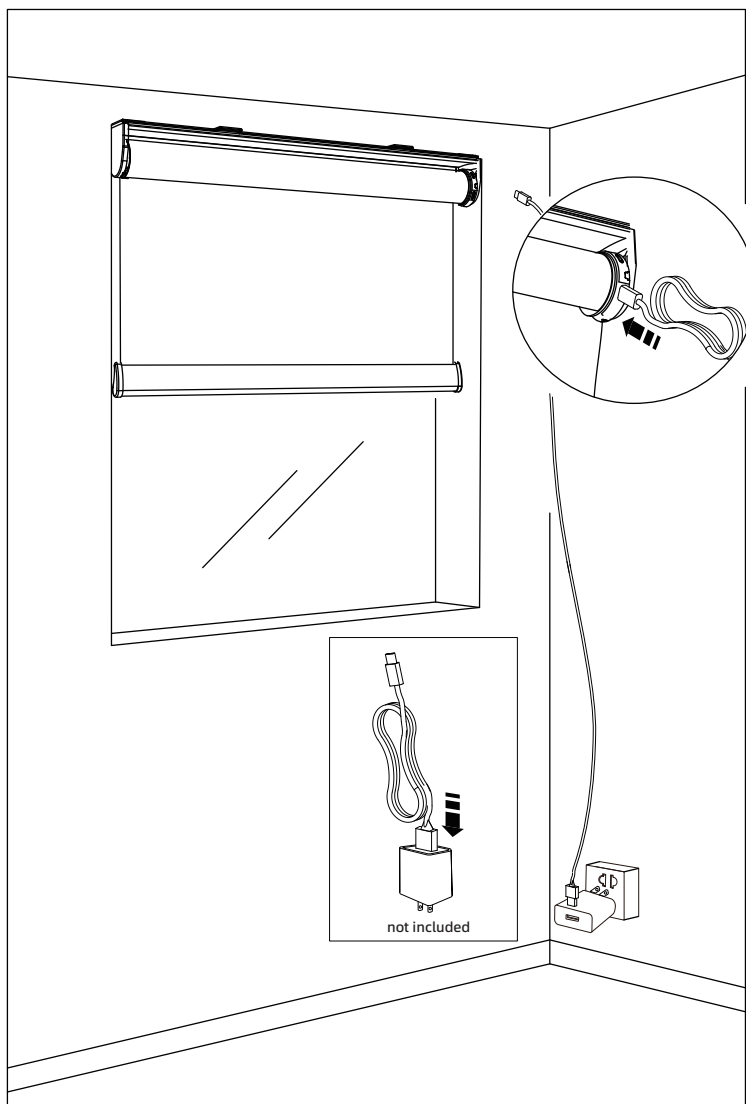
### Step 3 Install the Shade



## Shade Charging

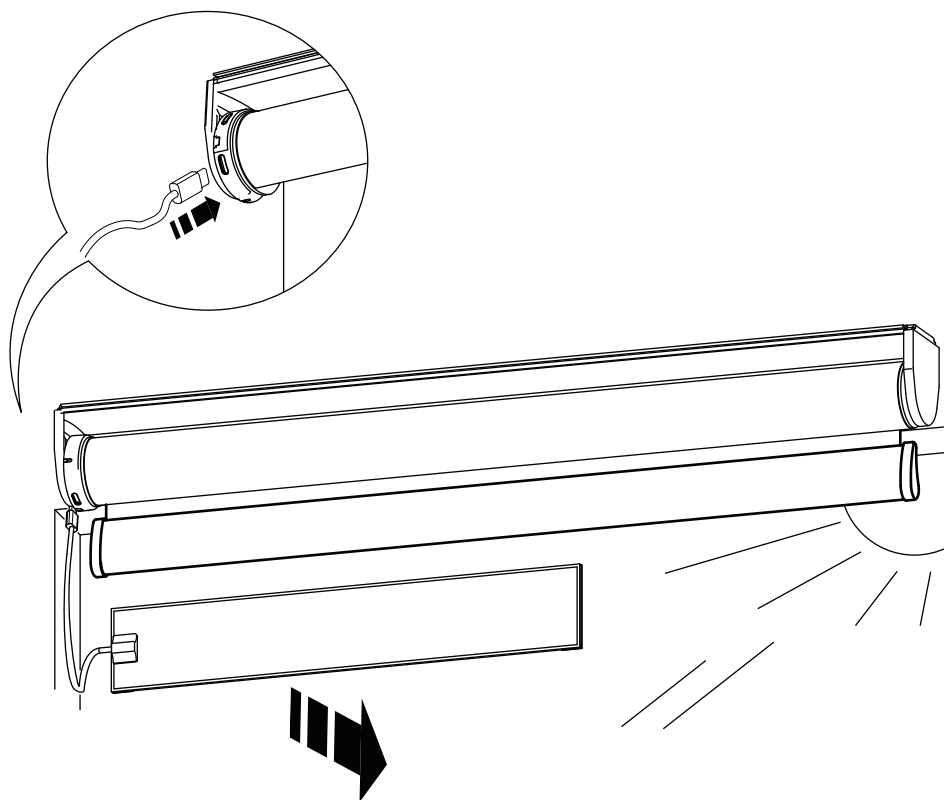
### Battery Powered Shades

#### Option 1 USB-C Charging Cable



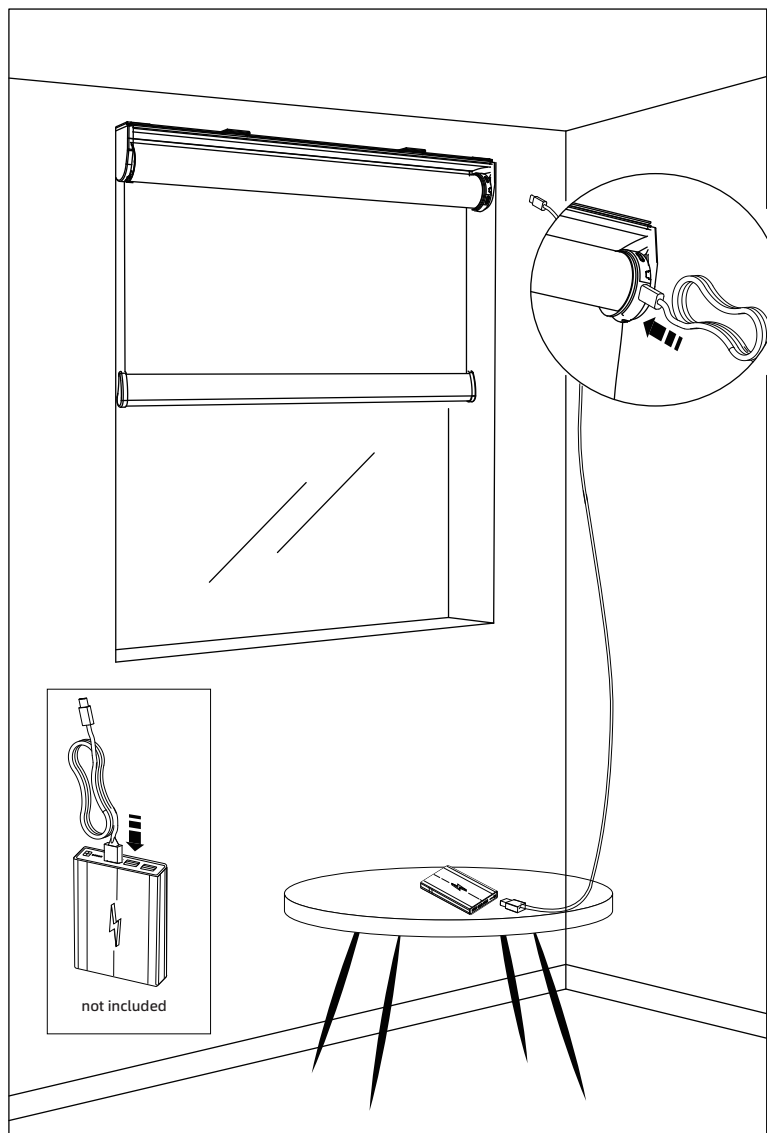
## Shade Charging

### Option 2 Solar Panel



## Shade Charging

### Option 3 Power Bank

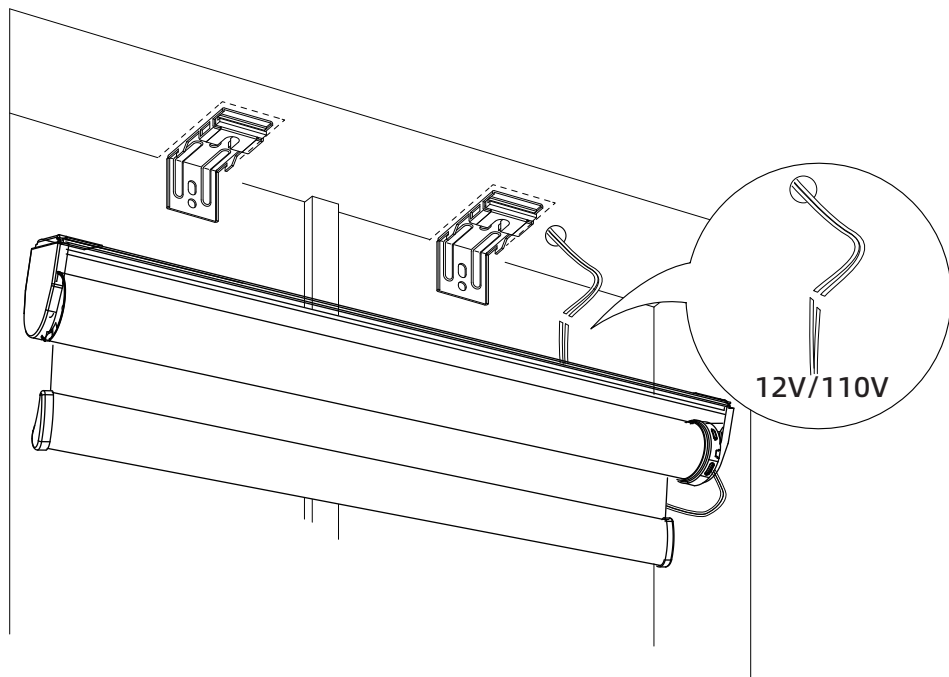




## Shade Charging

### Hardwired Shade

#### Option 1 Hardwired Shade

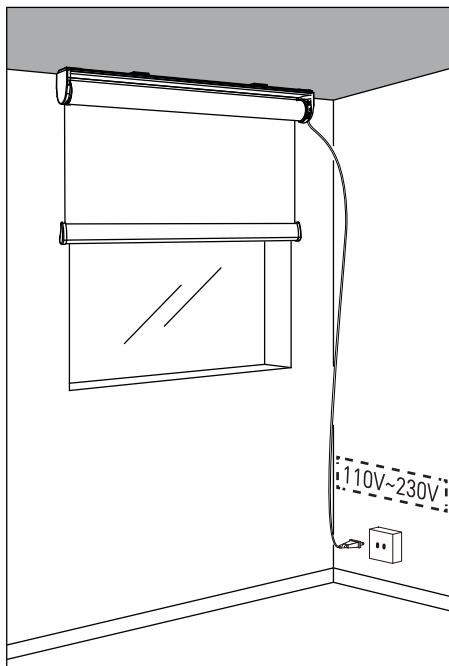


\* Attention: Please confirm 12V or 110V wiring.

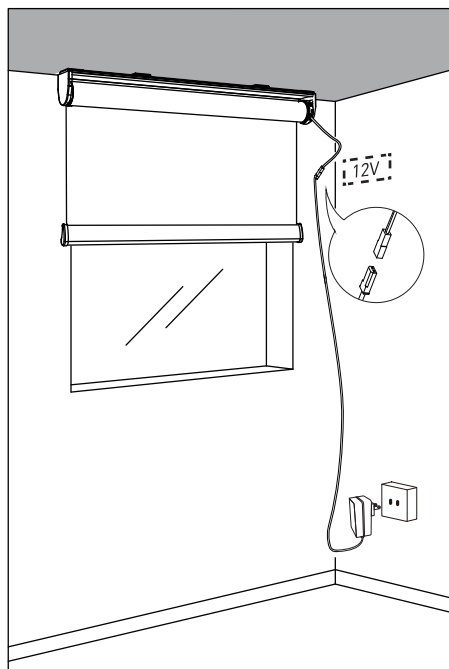
## Shade Charging

### Option 2 Hardwired Shade

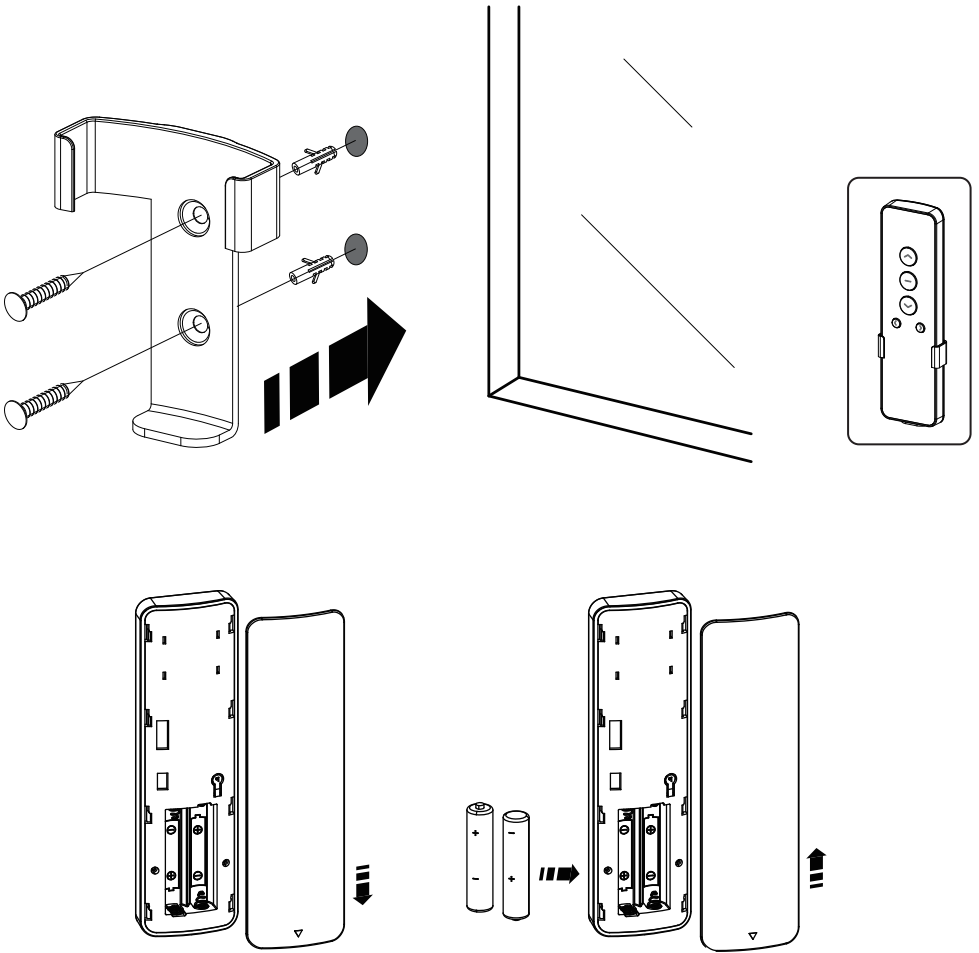
AC 110V-230V



DC 12V

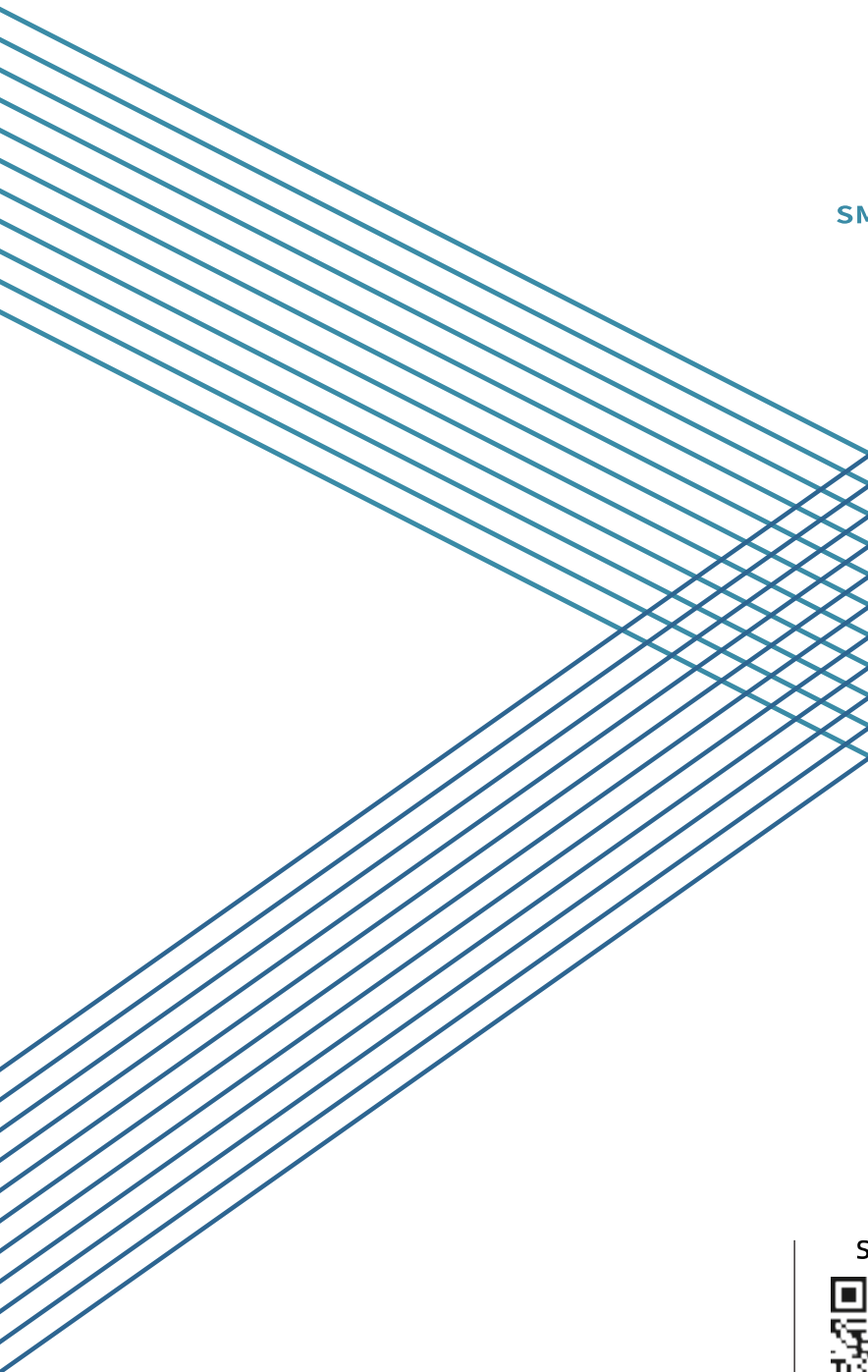


## Remote Holder Installation





SMARTWINGS



Social Media



T +1 877 762 7861  
[www.smartwingshome.com](http://www.smartwingshome.com)  
[support@smartwingshome.com](mailto:support@smartwingshome.com)