

VITOCROSSAL 300 CU3A CONNECTION QUICK START GUIDE

This Quick Start Guide is designed to provide an overview to an experienced licensed professional heating contractor with the a general wiring and operational knowledge of the Vitocrossal 300 CU3A boiler. It is NOT a substitute for the technical support literature supplied with the Vitocrossal 300 CU3A boiler and its accessories. The technical support literature of each product contains the necessary safety and national/local code requirements which, if not followed exactly, will lead to property damages, personal injuries and/or loss of life. Viessmann Manufacturing assumes no responsibility for damage(s) of any kind caused by inappropriate use of this Quick Start-up Guide and/or failure to read the technical literature provided.

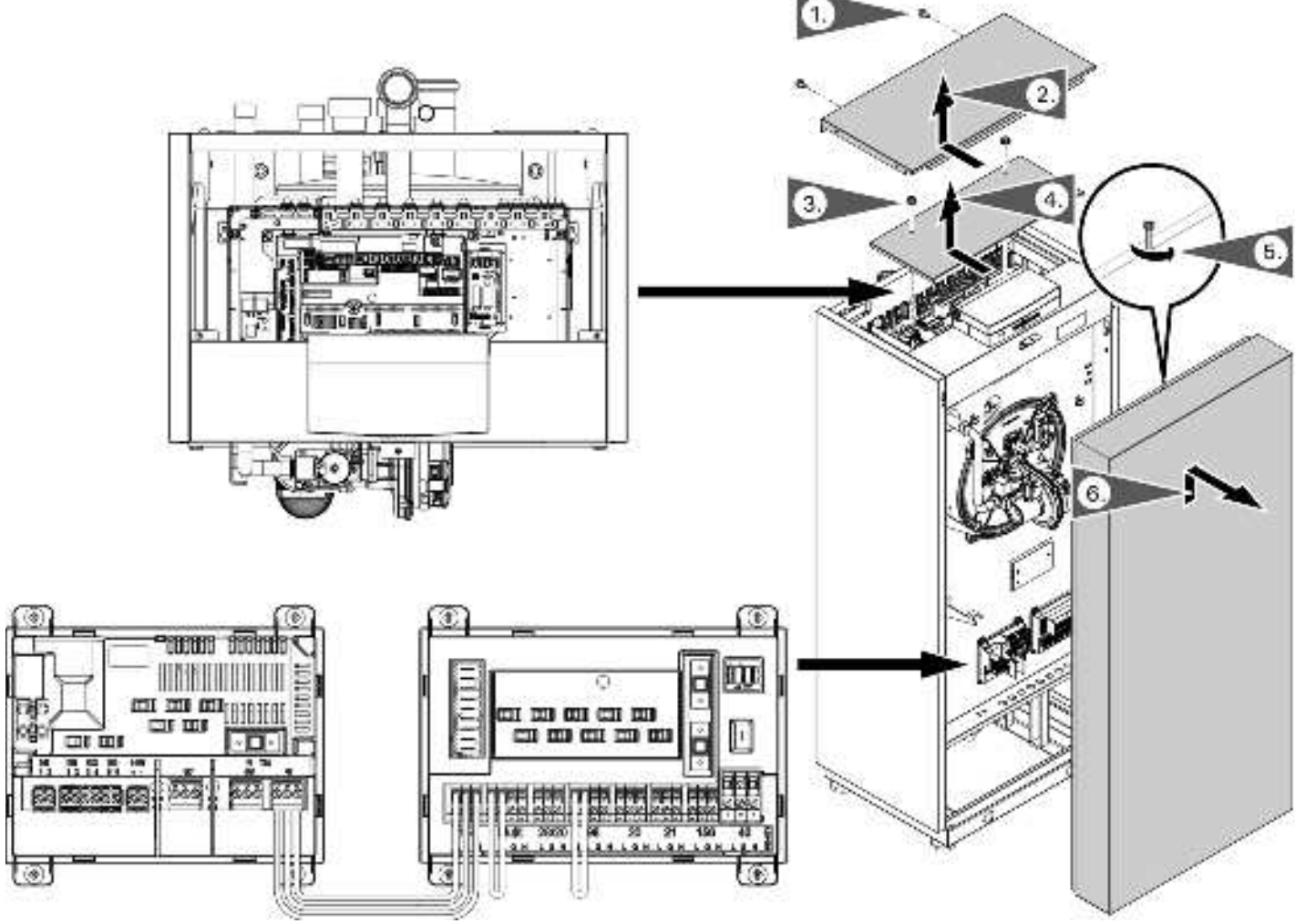
Before wiring the boiler...

- Connect fuel supply and all hydronic piping.
- Ensure gas pressure matches rating plate.
- Verify that the venting is installed according to the Installation Instructions.
- Perform leak tests on the gas supply, heating system and venting, using approved methods.

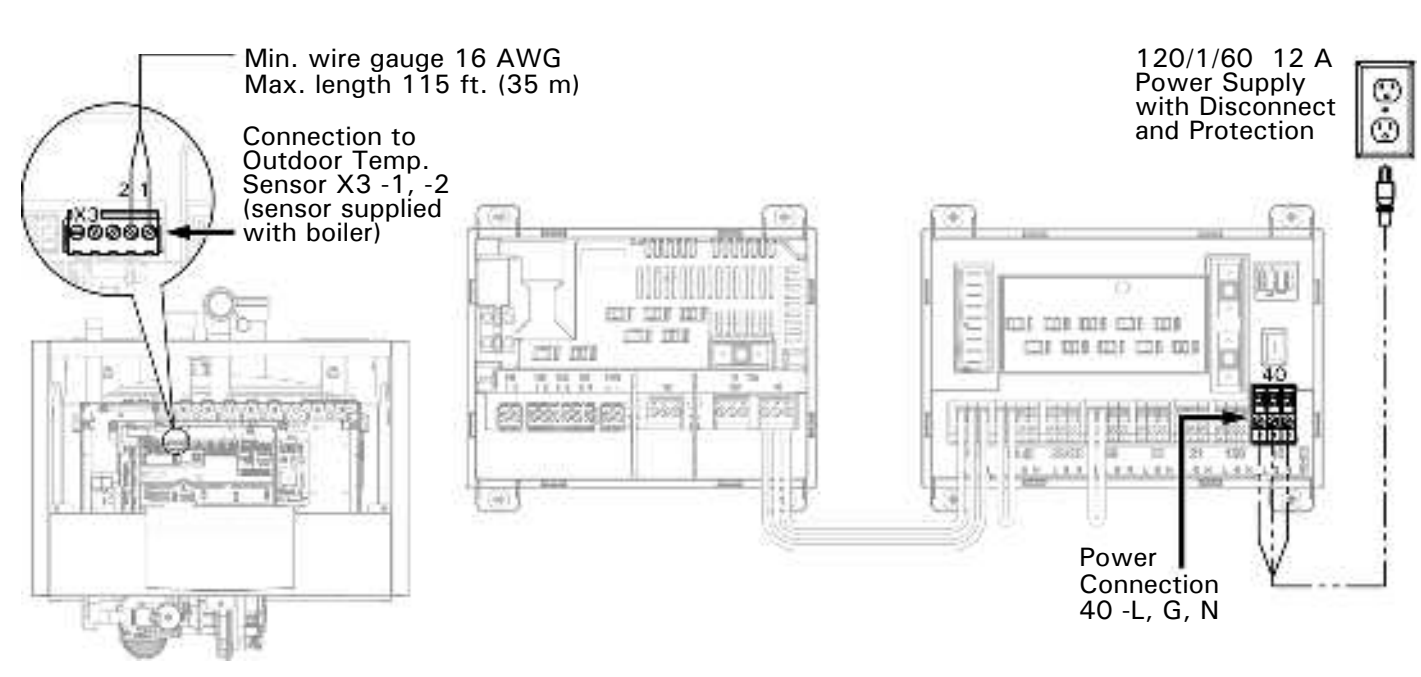
What you need to know about wiring the boiler

- For detailed installation information of the Vitocrossal 300 CU3A boiler refer to the appropriate documentation.
- Refer to boiler wiring diagram for electrical requirements of boiler.
- 120VAC wiring! The boiler can only be connected to a 120/1/60 power supply.
- Proper polarity must be maintained for 120VAC wiring.
- The control unit requires an earth ground for proper operation.
- Use shielded wire for sensor wiring to prevent electromagnetic interference.

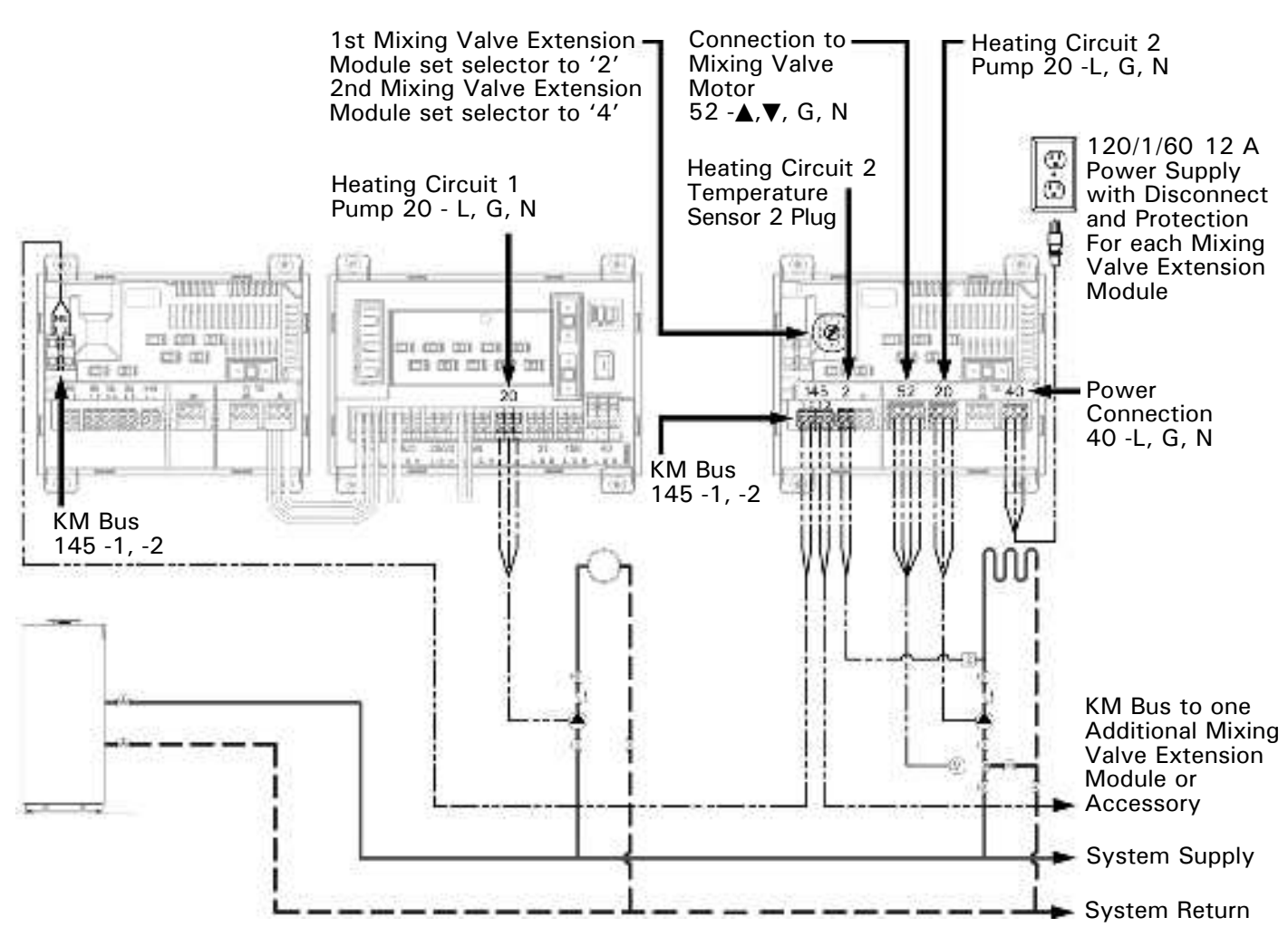
① Access to the CU3A Wiring



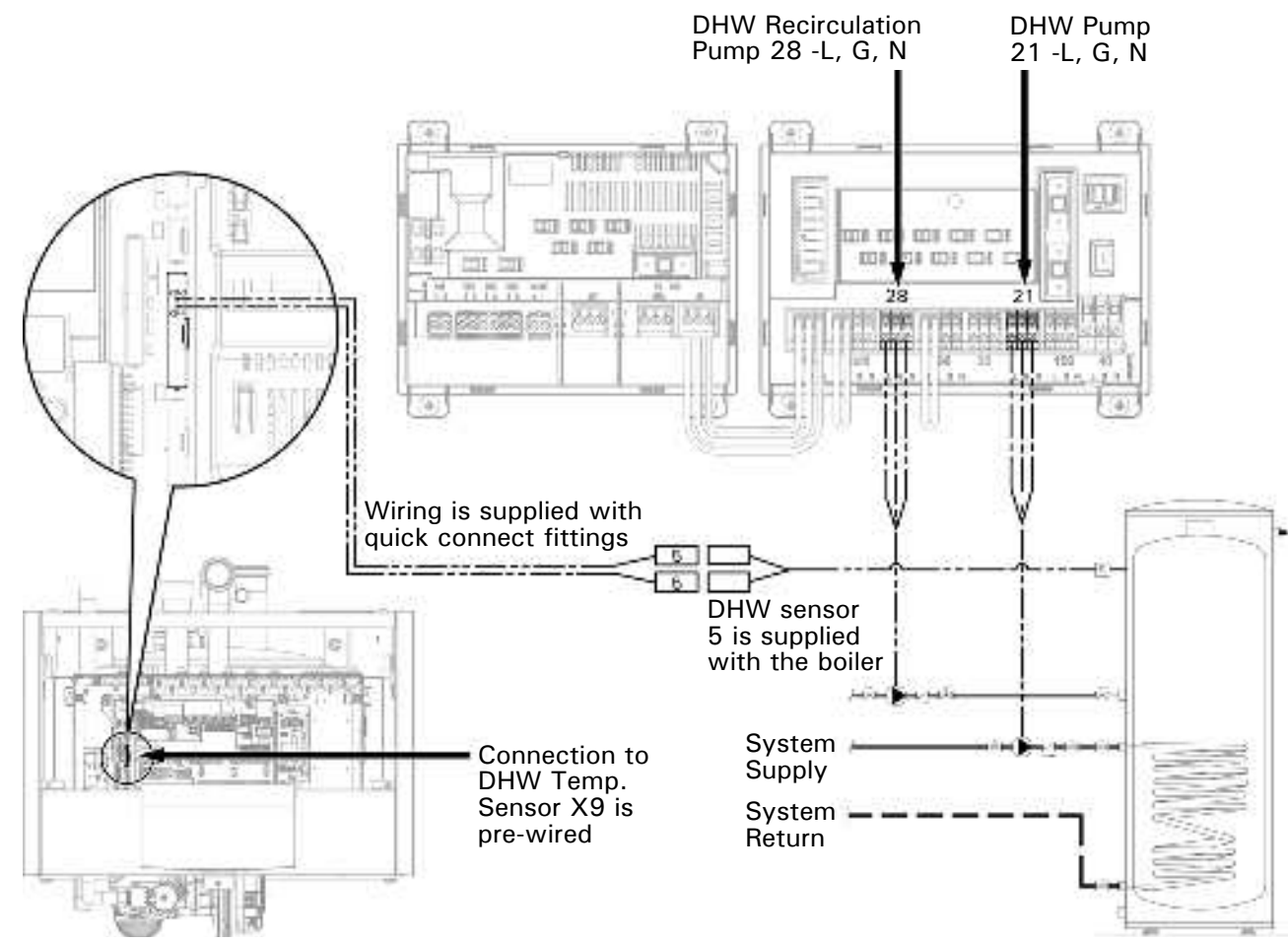
② Power and Sensor Connection



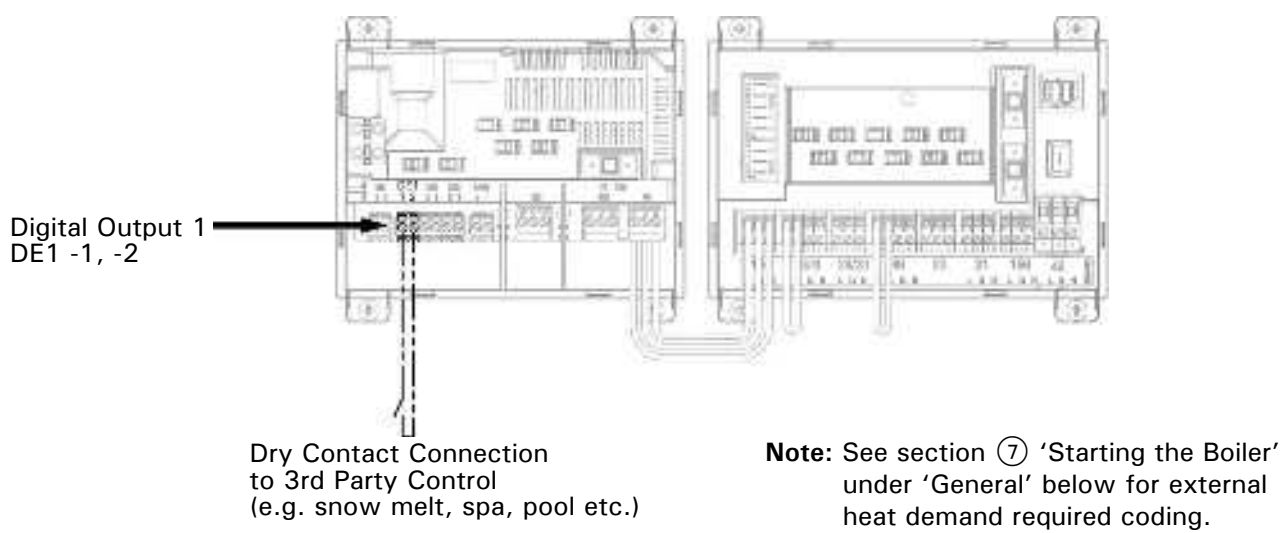
③ Heating Circuits Connection with mixing valve extension module (max. 2)



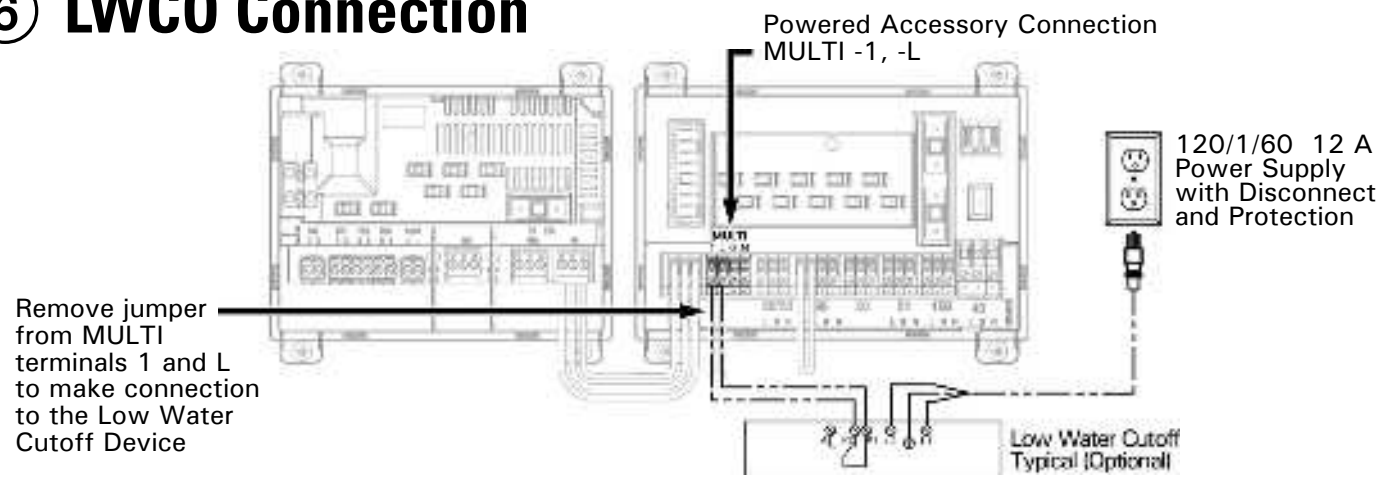
④ DHW Connection



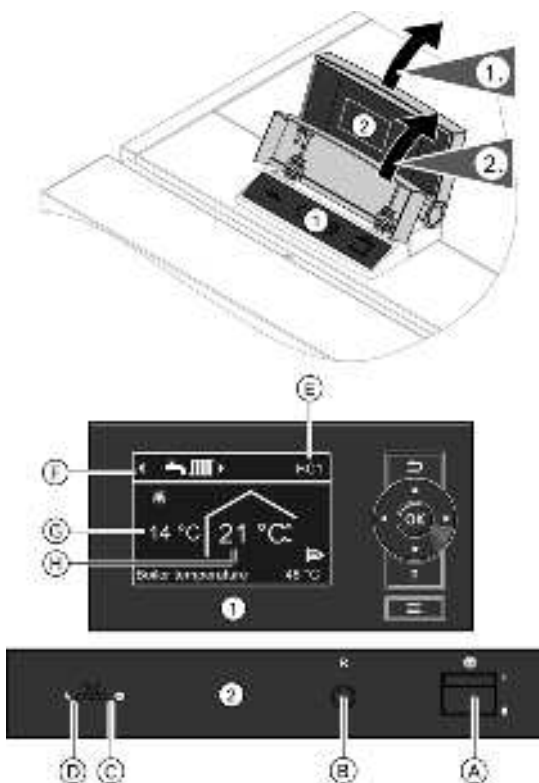
⑤ External Heat Demand Connection



⑥ LWC0 Connection



⑦ Starting the Boiler



- Legend**
- ① Programming Unit
 - ② Vitotronic 200, KW6B
 - Ⓐ ON/OFF switch
 - Ⓑ Reset button
 - Ⓒ On indicator (green)
 - Ⓓ Fault indicator (red)
 - Ⓔ Heating circuit which is selected for operation in the standard menu
 - Ⓕ Header (shows the heating program for displayed heating circuit ②)
 - Ⓖ Current outside temperature
 - Ⓗ Set room temperature

1. Turn ON switch Ⓐ (indicator Ⓒ is on).
 2. Using Ⓐ/Ⓑ, select 'Language' and press OK.
 3. Using Ⓐ/Ⓑ, set 'Time and Date' and press OK.
 4. Access coding level 2:
 - Simultaneously press OK and Ⓐ for 4 sec.
 - Simultaneously press OK and Ⓑ for 4 sec.
 - Using Ⓐ/Ⓑ, select desired coding group and press OK.
- General**
- Using Ⓐ/Ⓑ, select the system layout address 00: __ and press OK.
 - Using Ⓐ/Ⓑ, select the system layout coding and press OK.
- External Heat Demand (required coding if connected)**
- Using Ⓐ/Ⓑ, select address 3A:0 and press OK.
 - Using Ⓐ/Ⓑ, select coding 3A:2 and press OK.
 - Using Ⓐ/Ⓑ, select address 9B:0 and press OK.
 - Using Ⓐ/Ⓑ, select coding 9B: __ (for set point temp.) and press OK.
- For changing to LPG, refer to the fuel conversion instructions.
- Boiler**
- If no adjustments are required for the boiler go to the next group.
- Note:** 'DHW' and 'Heating Circuit 2 and 3' will not appear on the programming unit if not connected to the system.
- DHW**
- If changes are not required to set DHW temp. go to the next group.
- Heating Circuit 1, 2 and 3 (each circuit must be adjusted separately)**
- If adjustments are not required go to the 'service menu'.
- Press Ⓑ to return to groups, press Ⓑ for 'service menu'.
 - Using Ⓐ/Ⓑ, select 'Actuator test' and press OK, use Ⓐ/Ⓑ, to select 'test'.
 - Press Ⓑ to return to 'Actuator test', press Ⓐ for 'extended menu'.
- Extended Menu (after each change press Ⓑ to return to 'extended menu')**
- To change display units from °C to °F, use Ⓐ/Ⓑ, to select 'settings' and press OK.
- Using Ⓐ/Ⓑ, select 'temperature unit' and press OK, use Ⓐ/Ⓑ to select °F and press OK.
- To adjust the heating curve, use Ⓐ/Ⓑ to select 'heating' and press OK.
- Using Ⓐ/Ⓑ, select 'heating circuit' and press OK, use Ⓐ/Ⓑ, to select 'heating curve' and press OK, use Ⓐ/Ⓑ to select 'slope' or 'shift' and press OK, use Ⓐ/Ⓑ to set required value and press OK.
- To adjust room temperatures, use Ⓐ/Ⓑ to select 'heating' and press OK.
- Using Ⓐ/Ⓑ, select 'heating circuit' and press OK, use Ⓐ/Ⓑ, to select 'room temp. setpoint' and press OK, use Ⓐ/Ⓑ, to set 'value' and press OK, use Ⓐ/Ⓑ to set required value and press OK.
- To adjust DHW temperature, use Ⓐ/Ⓑ to select 'DHW' and press OK.
- Using Ⓐ/Ⓑ, select 'DHW temperature setpoint' and press OK, use Ⓐ/Ⓑ to select value and press OK.
- Select Ⓑ repeatedly to return to the home screen.