

Safety notices

- Before using this device for the first time, read the safety notices and act accordingly. Save these safety notices for later use or for the next owner.
- Carefully read the instruction manual and pay particular attention to the safety notices before putting the device into operation.
- Warning and caution labels mounted on the device provide important notices alerts for safe operation.
- In addition to the guidelines in the instruction manual, the general safety and accident prevention rules in force must be observed.
- The mains voltage must match to the voltage indicated on the machine label.
- Minimal outlet protection: (See technical data.)
- Protection class I devices may only be connected to properly grounded power sources.
- It is recommended to use a residual current device (residual current circuit breaker – DR) that interrupts the power supply if the leakage current to the ground exceeds 30 mA for 30 ms, or a device against earth fault circuit.
- Only use power cords specified by the manufacturer; the same applies to the replacements.
- Before using the device, always check if the power cord and plug are undamaged. Damaged power cords must be replaced immediately by our Authorized Service Centers or an authorized technician in order to prevent hazards.
- The device must only be connected to an electrical outlet installed by an electrician, according to the NBR 5410 standard.
- Switching on processes cause brief voltage drops. In unfavorable mains conditions, other devices may be harmed by this effect.
- If the mains impedance is lower than 0.15 Ohm, mains disturbances are unlikely to occur.
- Never touch with your wet hands in electrical components such as power cords, switches, plugs, extension cords, etc.
- You must ensure that the power and extension cords are not damaged by running over them, crushing, pulling, or similar problems. Protect the cord from heat, oil, sharp edges, and sharp or cutting objects.
- If it is necessary to use electrical extension

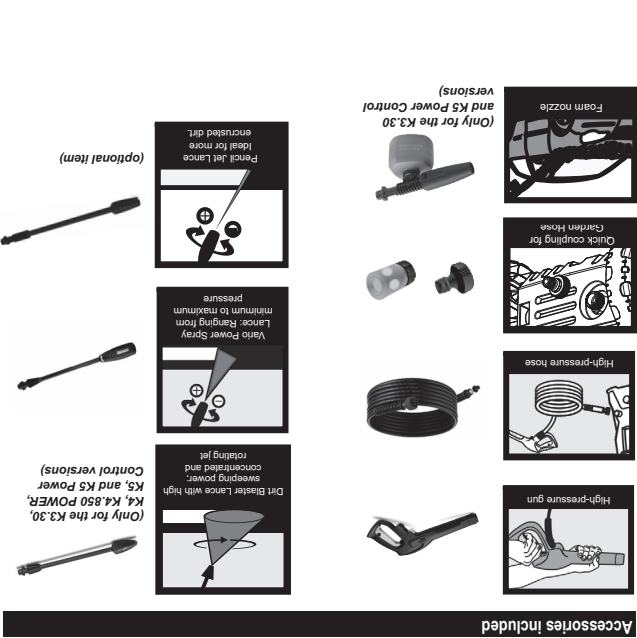
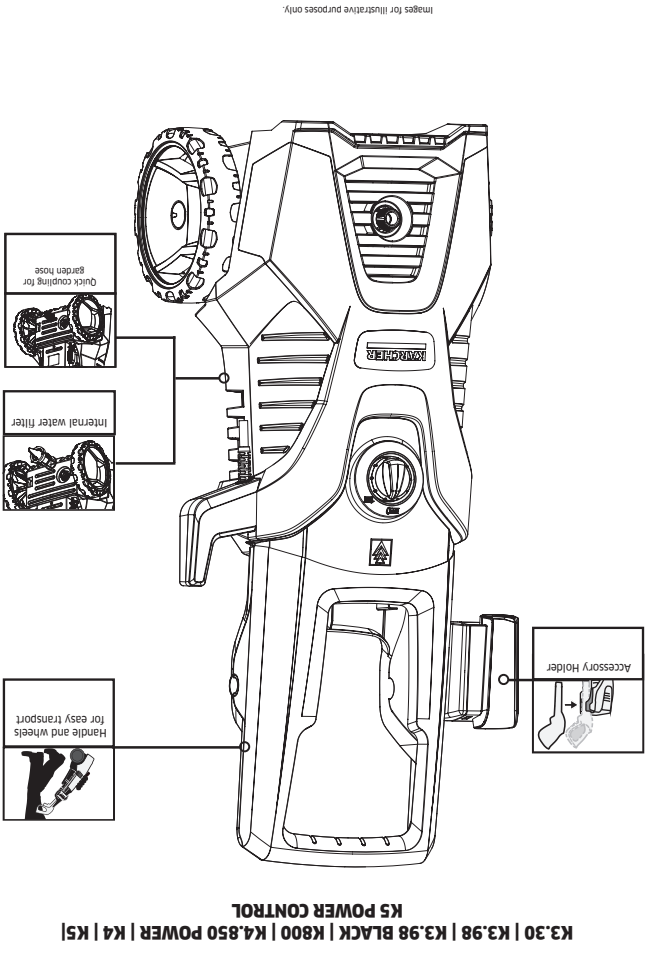
- cords, ensure that they have an adequate gauge: cords from 1 to 10 meters in length - 1.5 mm² gauge; cables from 10 to 30 meters - 2.5 mm² gauge.
- Plugs and couplings in the extension cord used must be waterproof.
- ATTENTION:** Unsuitable extension cords can be dangerous. If extension cords are required, they must be suitable for outdoor use and the connections must be kept dry and out of contact with water. We recommend that the extension cord and its plugs are kept at least 60 mm from the ground. Extension cords must be fully unwound during use.
- Check the power cord regularly for cracks or ageing. If any damage is detected, replace the cord before using the device again.
- When replacing couplings on extension cords, their water-tight protection and mechanical stability must not be impaired.
- Do not clean the device with a hose or a high-pressure water jet (risk of short-circuits or other damage).
- Do not operate the device at temperatures below 0 °C.
- CAUTION:** Do not use the machine if a power cord or important machine parts are damaged, e.g., safety devices, high-pressure hoses, trigger gun.
- CAUTION:** Always turn off the mains disconnect switch when leaving the machine unattended.
- Observe and respect your water supply company's rules and instructions.
- Make sure that the entire supply line and its connections do not present any leaks and are properly sealed.
- The high-pressure hose must not be damaged. A damaged high-pressure hose must be replaced immediately. Only hoses and connections recommended by the manufacturer may be used.
- ATTENTION:** Water from the preventive backflow is considered non-potable. If you use an "aqua-stop" device (water backflow preventer) in your supply hose, the water from this point on may become impure. Do not connect the machine to a potable water network without this type of connection.
- ATTENTION:** High-pressure hoses, couplings, and fittings are important for device safety. Use only hoses, fittings, and couplings recommended by the manufacturer.

- Before using the device and its accessories, check that they are in good repair and working order. Do not use the device if the power cord or important components are damaged, such as safety devices, high-pressure hoses, guns.
- Never vacuum liquids containing thinners or acids and solvents! These include materials such as gasoline, paint thinners, or fuel oil. Their spray mist is highly flammable, explosive, and toxic.
- ATTENTION:** Explosion Hazard - Do not spray flammable liquids.
- Never use acetone, undiluted acids and solvents, as they may corrode the materials used in the device.
- When using the device in hazardous areas (e.g., service stations), the corresponding safety regulations must be observed. The device use in places where there is a danger of explosion is not allowed.
- The device must always be placed on a flat and stable base.
- It is indispensable to wear hearing protection if the sound pressure level is greater than 85 dB(A) (as indicated in the device's operating instructions/technical data).
- All electrical components within equipment range must be protected against water jets.
- The gun trigger cannot be locked when the device is in the pressed position.
- Some cleaning operations may pose health risks, so wear protective clothing and goggles against water or dirt splashes.
- ATTENTION:** High-pressure waters jet can be dangerous if used incorrectly. The jet must not be directed towards people, animals, live electrical equipment, or the device itself.
- ATTENTION:** Do not point the jet towards others or yourself to clean clothes or shoes.
- Vehicle tire/tire valves may only be washed from a minimum spray distance of 30 cm. Otherwise, the tires and their valves may be damaged by the high-pressure jet. The first sign of damage is a change in the tire color. Damaged vehicle tires are extremely dangerous.
- Materials with asbestos content and others that contain substances harmful to health cannot be washed.
- Short lances pose a risk of injury, as the high-pressure jet could come into contact with the hand inadvertently. If the distance between the gun trigger and the lance tip

- is less than 75 cm, the use of a point jet nozzle or a turbo nozzle is not allowed.
- When using cleaning products, read the safety instructions of the cleaning product manufacturer, especially the warnings regarding personal protective equipment.
- Prior to cleaning, an assessment of the risks to the surface to be cleaned must be performed to determine the safety and health protection requirements. The respective necessary protective measures must be taken.
- ATTENTION:** During the use of high-pressure washers, aerosols may be formed. Aerosol inhalation can be harmful to health.
- ATTENTION:** Only detergents approved by the manufacturer may be used. This device is designed for use with detergents provided or recommended by Kärcher. Using other detergents or chemical agents may affect the device safety.
- CAUTION:** Depending on the application, shielded nozzles can be used for high-pressure cleaning, which will drastically reduce the emission of hydrated aerosols. However, not all applications allow the use of such a device. If shielded nozzles are not applicable for aerosol protection, an FFP class 2 or equivalent breathing mask may be required, depending on the cleaning environment.
- When working with detergents, its manufacturer's instructions for use must be complied with.
- Kärcher detergents meet the operational safety requirements as they do not contain any substances harmful to the environment. In case of contact with the eyes, clean them immediately with water, and in case of ingestion of liquid, a doctor must be contacted immediately.
- Store detergents in a place out of children's reach.
- Never open the machine, either for repairs or out of curiosity, especially with the engine running.
- In HDS washers, after using hot water and before storing the device, let it cool down using cold water for a few minutes.
- In case of interruptions longer than 5 minutes, the equipment must be turned off using the switch and depressurized.
- The user must use the device according to the specifications. Observe local conditions and pay attention to third

- parties — especially children — when operating the device.
- Always turn the machine off at the main switch when leaving it unattended. Never leave the equipment switched on unattended.
- This device must only be handled by persons who have been specifically trained to do so, or who prove that they are capable of doing it, and who are expressly authorized to use it.
- This device must not be used by children or persons with reduced physical, sensory, or mental capabilities, or lacking experience and knowledge, unless they have received adequate training or supervision.
- ATTENTION:** This device must not be operated by children or untrained people.
- ATTENTION:** Do not use the device if other people are within its range, unless they are wearing personal protective equipment.
- Children must be supervised to ensure that they do not play with the device.
- Always work on the device with suitable gloves.
- Due to the water jet coming out of the high-pressure nozzle, a recoil force and eventual torque act on the hand gun.
- Ensure a proper position and hold the hand injection gun and high-pressure lance securely.
- When using other accessories, recoil and twisting forces may change.
- The exhaust gas opening must not be obstructed.
- Do not lean over nor place your hand near the exhaust gas opening.
- Do not touch the boiler while the burner is working. (Risk of burns.)
- ATTENTION:** Ensure that there are no exhaust gas emissions near air intakes.
- For devices with bolt-on wheels: Before calibrating tire air pressure, check if the wheel bolts are correctly tightened.
- Before calibrating tire air pressure, check the correct reducer setting in the compressor.
- Do not exceed the maximum tire pressure. The maximum allowable tire pressure can be found in the tires or wheels. If different values are indicated, the lowest value must be observed.

- For more information about accessories and spare parts, visit www.karcher.com.br.
- To prevent risks, repairs and the fitting of spare parts may only be performed by the Authorized Service Center.
- ATTENTION:** To ensure equipment safety, only use spare parts recommended or approved by Kärcher.
- Original accessories and spare parts provide the guarantee that the device can be operated safely and without faults.
- Transport**
- During transport, the device must be immobilized and securely fastened.
- Devices with a gasoline engine and hot water operation**
- Maintenance**
- Before cleaning and maintaining the device, as well as replacing parts, turn it off and remove the plug from the outlet (for electrical devices), or remove the ignition key and disconnect the battery (for devices with combustion engines fitted with electric ignition).
- Depressurize the high-pressure system before carrying out any work on the device and its accessories.
- Repairs may only be performed by our Authorized Service Centers or by Kärcher technicians who are thoroughly familiar with the main safety regulations.
- Devices that can be modified on site for industrial use are subject to a safety inspection in accordance with current legislation (e.g., in Germany: VDE 0701; in Brazil: NR 12).
- Accessories and Spare Parts**
- Only use original accessories and spare parts. This will ensure the device safe and fault-free operation.



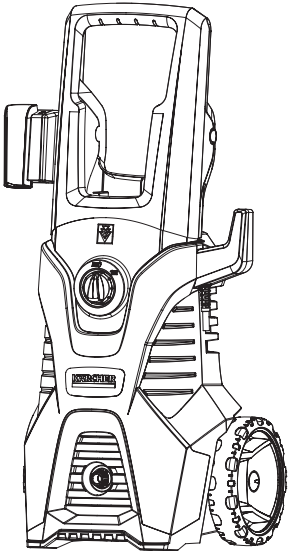
your Kärcher equipment jet of water. cleaning and 8 times less expenses. So not even the heaviest dirt stands a chance against A conventional hose consumes a maximum of 380 liters in the same period of time. The result is 30 times more hose. and you will also save 80% of water, as compared to cleaning carried out with a conventional With your Kärcher equipment, you will perform cleaning tasks faster, with surprising results, cleaning solutions, offering a complete range of products to meet all your needs. Founded in Germany in 1935 and acting in Brazil since 1975, Kärcher is a world leader in We are proud of having you as a customer.

Thank you very much for choosing Kärcher!

Congratulations!

KÄRCHER

K3.30
K3.98
K3.98 BLACK
K800
K4.850 POWER
K4
K5
K5 POWER CONTROL



Images for illustrative purposes only.

Conservation and Maintenance

- ▲ **DANGER!**
- Before performing repair and maintenance work, switch off the device and remove the plug from the outlet.

Conservation

- Operate as instructed and clean the water and detergent inlet filters.

Storage

If it is necessary to leave the equipment stored for a long period or exposed to low temperatures, all water present inside must be drained following the instructions below: Turn on the equipment without the water supply hose and without the high-pressure hose and leave it running (for a maximum of 1 minute) until there is no more water in the high-pressure connection.

Grounding and 3-Pin Plug



Electrical Connection

Your high-pressure washer ships from factory with a plug that meets the new standard for plugs and must be connected to an outlet compliant with the standard of each country. Use an exclusive outlet, in perfect conditions, to turn on the device. Check if the power supply voltage indicated on the washer power cord label matches the outlet to which it will be connected (127 V or 220 V).



This washer is fitted with a 3-pin plug. The housing is connected to the plug central pin, which, when connected to the outlet, is in direct contact with the mains ground wire, thus increasing user safety. Carefully follow the installation instructions, especially regarding the supply voltage and grounding.

Cords and Extensions

If an extension is needed, make sure that

it meets the specifications regarding wire gauges and number of wires and pins, as described herein.

- ▲ Under no circumstances use an extension cord that does not make use of the plug grounding pin.
- Never move the device by dragging it by the hose or the power cord.



Remove the plug from the outlet before performing any maintenance or cleaning on the product. Keep all electrical connections dry and free from contact with water and/or wet surfaces. Under no circumstances remove the plug grounding pin. Do not use adapters that bypass the plug grounding pin. Never use an adapter to connect to a 10 A outlet. Never use T-type adapters or connectors.



Do not try to connect the 3-pin plug to an outlet not compliant with the standard of each country. Connect the plug to properly grounded outlets only. Before connecting the device to the mains, make sure that the on/off switch on the high-pressure washer is in the off position.

Never pull the power cord to disconnect the high-pressure washer; pull by the plug to prevent damages. Remove the plug from the outlet before performing any maintenance or cleaning on the pressure washer. Failure to follow these instructions may result in fire, fire, or electric shock risks.

Product Disposal

This product is likely to contain electronic components, heavy metals, or toxic substances and therefore cannot be disposed of in regular waste. See a list of delivery points on our website: www.karcher.com.br

Responsible for disposal: Kärcher Indústria e Comércio Ltda
CNPJ (Corporate Taxpayer's Number): 47110960/0001-78
Tel: 08000-176111
Via Miguel Melhado Campos, 600 | Vinhedo - SP - Postal code: 13288-003

Environmental Protection

The packaging materials are recyclable. Do not put the packaging in the household waste; send it to a recycling facility.

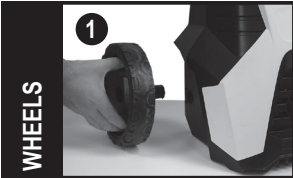


www.kaercher.com/dealersearch



KÄRCHER INDÚSTRIA E COMÉRCIO LTDA.
VIA MIGUEL MELHADO CAMPOS, 600 - 13.288-003 - VINHEDO - SP
CALL CENTER: 08000-176111
www.karcher.com.br

STEP-BY-STEP INSTRUCTIONS TO PUT THE MACHINE INTO USE The assembly method is the same for any model in this manual. Images for illustrative purposes only.



Fit the wheel to the machine chassis.



With the wheels in place, fit the wheel locks until you hear a click sound. No screwing is required. *(Included only for the K3.30, K800, and K4.850 POWER versions.)*



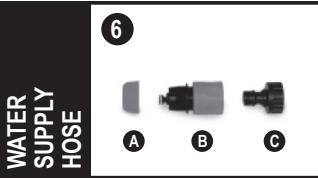
Fit the caps into the wheel holes and press it until you hear a click sound. *(Included only for the K3.98, K3.98 BLACK, K4, and K5 POWER CONTROL versions.)*



Fit the gun holder on the handle side until the end of the stroke.



Thread the (included) screws into the two holes located on the back of the handle. *(Screwdriver not included.)*



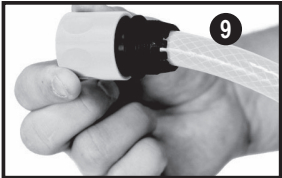
Quick coupling: A - Threaded cap
B - Central part | C - Connector



Thread the quick coupling connector into the machine water inlet.



Fit the threaded cover of the quick coupling onto the water hose*, which should have a 1/2 inch diameter and a recommended 5 m to 10 m length. **not included*



Carefully fit the quick coupling onto the hose, making sure the jaws are all facing outward.



Thread the threaded cap onto the quick coupling clockwise until it locks.



Fit the end of the high-pressure hose to the machine water outlet connection. Then, screw the swivel nut clockwise to the end.



Fit the high-pressure hose connector to the Gun, turning until you find the correct position and press until you hear a "click" sound.



If you want to disconnect the high-pressure hose from the gun, press and hold the yellow button and pull the hose.



Safety Tip! Whenever you change a gun accessory or interrupt use with the machine on, activate the safety lock by pressing the black trigger button. This way, you will prevent accidents.



Fit the lance into the gun by compressing the spring.



Rotate the lance a quarter of a turn until it locks and, to remove it, do the opposite movement.



Turn on the water supply tap.



Connect the plug to the mains outlet, making sure that the mains voltage is the same as the machine voltage.



To remove air from the system: with the washer off, press the trigger until air stops coming out and only water flows.



With the trigger pressed, turn the machine on by turning the knob to the "1/ ON" position.



Press the trigger to start your pressure washer.



The Vario Power Spray Lance has pressure adjustment. Turn as per the indication stamped on the lance to regulate between minimum and maximum pressure.



The Pencil Jet Lance has jet adjustment. With 2 types of jets: a flat one that cleans a larger area with more drag and a straight one that is more focused and removes the most encrusted dirt. *(optional item)*



In a container, dilute Kärcher detergent in water, as recommended on the packaging. Place the suction hose in this container, making sure the hose is not kinked and is in contact with the diluted detergent. *(Suction hose position may vary.)*



With the flat spray lance, turn the nozzle to the "mix" position to apply detergent. To return to high pressure, position the nozzle between the "min" and "max" positions.



To apply detergent without the lance, remove it and pull the trigger.



To apply detergent using the foam Nozzle, disconnect the detergent container from the nozzle, fill the container with detergent, either diluted or undiluted, and reconnect it. *(Optional Accessory, included only for the K3.30 and K5 POWER CONTROL versions.)*



Fasten the foam nozzle to the gun by compressing the spring and turning a quarter of turn until it locks. Pull the trigger to start the application. *(Optional Accessory, included only for the K3.30 and K5 POWER CONTROL versions.)*



Removing the remaining water: Turn on the equipment without the water supply hose and leave it running for a maximum of 1 minute until there is no more water.



After using your washer, simply detach the gun from the high-pressure hose and store it with the other machine accessories.

Tips for the smooth running of your Kärcher device

Correct Use of the High-Pressure Washer

Only use your Kärcher at home: For cleaning machines, vehicles, tools, gardening equipment, etc. with a high-pressure water jet (and detergents if necessary).

The high-pressure washer can only be operated vertically.

Safety Devices

ATTENTION:

Safety devices protect the user and cannot be changed or removed.

On-Off Switch

The machine switch prevents it from being accidentally turned on.

Gun with Safety Lock

This system prevents the machine from being turned on and incorrectly used by untrained personnel.

FULL STOP System

When the gun trigger is released, the high-pressure pump is turned off by a pressure switch.

When the trigger is pressed, the pump turns on again.

Water Supply

Dirty water can cause irreparable damage to the equipment. For this reason, we recommend never connecting the device to a water supply without using a filter. Kärcher has a filter specially developed for this purpose (code 9.303-262.0).

Putting into Operation

ATTENTION:

Never let the equipment work for more than 2 minutes without water, as this could lead to irreparable damage to the high-pressure pump. If the equipment does not establish pressure within 2 minutes, turn it off and proceed as indicated under the topic "Troubleshooting in Case of Malfunction."

Pausing the Operation (Full Stop)

For brief interruptions in operation, just release the gun trigger and the device will turn off. If interruption time exceeds 5 minutes, proceed according to the section "Turning off the Device."

Turning off the Device

Turn off the equipment, leaving the switch in the "0/OFF" position.

Turn off the water supply tap.

Press trigger to release system pressure.

Activate the gun safety lock.

Disconnect gun-mounted accessory.

Disconnect the high-pressure hose.

Disconnect the water supply hose.

If it is necessary to leave the equipment stored for a long period, please drain all water present inside following the instructions below:

Turn on the equipment without the water

an opposing force. Ensure a comfortable and firm position for handling the gun.

Warning: The equipment turns off as soon as the trigger is released. The system remains pressurized. Never remove the hose or store the equipment before depressurization.

Cleaning Methods with Detergent

Apply a high-pressure jet to the surface to remove excess dirt and moisten the surface to be cleaned.

Spread the detergent and let it act. Follow the detergent manufacturer's recommendations on quantity, dilution, and operating time.

Finally, apply the high-pressure jet to the surface to be cleaned again so that dirt and detergent are completely removed.

Using the Foam Nozzle*

To apply detergent using the Foam Nozzle: Disconnect the detergent container from the nozzle. Fill the container with detergent, either diluted or undiluted, and reconnect it.

Fasten the foam nozzle to the gun by compressing the spring and turning a quarter of turn until it locks. Pull the trigger to start the application.

*Note: This accessory is sold separately and can be purchased at authorized resellers and stores with the code 9.302-054.0.

Pausing the Operation (Full Stop)

For brief interruptions in operation, just release the gun trigger and the device will turn off. If interruption time exceeds 5 minutes, proceed according to the section "Turning off the Device."

Turning off the Device

Turn off the equipment, leaving the switch in the "0/OFF" position.

Turn off the water supply tap.

Press trigger to release system pressure.

Activate the gun safety lock.

Disconnect gun-mounted accessory.

Disconnect the high-pressure hose.

Disconnect the water supply hose.

If it is necessary to leave the equipment stored for a long period, please drain all water present inside following the instructions below:

Turn on the equipment without the water

supply hose and without the high-pressure hose and leave it running (for a maximum of 1 minute) until there is no more water in the high-pressure connection.

Disconnect the plug from the electrical outlet.

Put the power cord, the high-pressure hose, and the other accessories in the holders and accessory holders available in the equipment.

Storing the Equipment

To avoid equipment damage and operator accidents or injuries, the place chosen for storage must support the machine weight. (See technical data.)

Position the equipment on a flat and stable surface.

Troubleshooting in Case of Malfunction

With the troubleshooting described below, you can eliminate minor faults yourself. If you have any questions, contact one of our Authorized Service Centers.

⚠ DANGER!

Before any maintenance work, make sure that the equipment power cord plug is disconnected from the outlet. Internal or electrical repairs must only be performed by one of our Authorized Service Centers or Kärcher Technicians.

The equipment does not work:

Press the gun trigger: The equipment should start working.

Check if the voltage indicated on the device label matches the local voltage.

Check if the power cord is damaged and/or correctly connected.

Check if the local mains have any problems (circuit breaker, fittings, and fuses).

If the problem is not solved, please send the equipment to the nearest Authorized Service Center.

The equipment does not reach the working pressure:

Eliminate air from the system: Turn on the equipment and press the trigger without the lance. Keep the trigger pressed for approximately 2 minutes until the water runs continuously without air bubbles.

Check if the water supply network has problems.

Check the lance conditions.

Check the water inlet filter as it may be clogged or dirty. Wash it or replace it if necessary.

If the problem is not solved, please send the equipment to the nearest Authorized Service Center.

The equipment does not start (engine "roaring"):

When turning on the equipment, first press (and hold) the gun trigger and then turn the machine switch to "1/ON."

If the problem is not solved, please send the equipment to the nearest Authorized Service Center.

The equipment is Oscillating/Vibrating:

Oscillating: Check for possible lance clogging: Use an object that passes through the lance nozzle hole — a needle, for example — and unclog the jet channel. Rinse the nozzle with plenty of water from the outside to the inside.

Vibrating: Check the water supply flow. It may be too low (not enough water), or the temperature may be high.

If the problem is not solved, please send the equipment to the nearest Authorized Service Center.

The Equipment has Water Leaks:

Tighten any manual connections. Make sure there are no broken rubber rings.

Note: Please note that up to 3 drops per minute are permissible.

If the problem is not solved, please send the equipment to the nearest Authorized Service Center.

Transport

ATTENTION:

In order to avoid accidents or injuries during transport, pay attention to the device weight (see technical data), always carrying it by the handle and protecting it against slipping and tipping over.

Lance and Accessories

Pencil Jet Lance (optional item): The pencil jet lance has jet adjustment. With 2 types of jets: a flat one that cleans a larger area with more drag and a straight one that is more focused and removes the most encrusted dirt.

Vario Power Spray Lance: Flat jet high-pressure spray lance, ideal for everyday cleaning jobs. Its working pressure can be adjusted between minimum and maximum.

Dirt Blaster Lance: High-pressure lance with rotating jet, ideal for hard-to-remove dirt in large areas. *(Included only for the K3.30, K4, K4.850 POWER, K5, and K5 POWER CONTROL versions.)*

Rotary Brush (optional item): Accessory

that uses the water force from the high-pressure washer to drive the mechanism that generates the rotation of the brush internal bristles, thus helping in cleaning by scrubbing the surface to be cleaned.

T-Racer (optional item): Accessory with two internal high-pressure jets that, when turned, enhance the area cleaning, without leaving any splashes.

Warning: This accessory can only be used on flat surfaces.

Foam Nozzle (optional item): A nozzle that can be attached to the high-pressure washer instead of the lance for applying detergent to clean your vehicle, floors, etc. *(Included only for the K3.30 and K5 POWER CONTROL versions.)*

Device Symbols

The high-pressure jet must not be directed towards people, animals, live electrical equipment, or the device itself. Protect the device from frost.

This device cannot be directly connected to the public drinking water network.

Technical Data																							
Models	K3.98 K3.98 BLACK						K4						K3.30						K5 K5 BLACK K5 POWER CONTROL				
Electrical Connection																							
Voltage	V	110	120-127	220	220	230	110	120-127	220	220	230	110	120-127	220	220	230	110	120-127	220	220	230		
Frequency	Hz	60	60	60	50	50	60	60	60	50	50	60	60	60	50	50	60	60	60	50	50		
Current	A	12	12	7	7	7	14	14	8	8	8	14	14	8	8	8	16	16	9	9	9		
Power circuit protection (slow-blow)	A	16	16	10	10	10	16	16	10	10	10	16	16	10	10	10	20	20	16	16	16		
Insulation class	I	I	I	I	I	I	I	I	I	I	I	I	I	I	I	I	I	I	I	I			
Protection class		IPX5	IPX5	IPX5	IPX5	IPX5	IPX5	IPX5	IPX5	IPX5	IPX5	IPX5	IPX5	IPX5	IPX5	IPX5	IPX5	IPX5	IPX5	IPX5			
Water Connection																							
Inlet temperature (max.)	°C	40	40	40	40	40	40	40	40	40	40	40	40	40	40	40	40	40	40	40			
Flow (min.)	L/min (L/h)	10 (600)	10 (600)	10 (600)	10 (600)	10 (600)	10 (600)	10 (600)	10 (600)	10 (600)	10 (600)	10 (600)	10 (600)	10 (600)	10 (600)	10 (600)	10 (600)	10 (600)	10 (600)	10 (600)			
Inlet pressure (min-max.)	MPa (psi)	0.2-1.2 (30-175)	0.2-1.2 (30-175)	0.2-1.2 (30-175)	0.2-1.2 (30-175)	0.2-1.2 (30-175)	0.2-1.2 (30-175)	0.2-1.2 (30-175)	0.2-1.2 (30-175)	0.2-1.2 (30-175)	0.2-1.2 (30-175)	0.2-1.2 (30-175)	0.2-1.2 (30-175)	0.2-1.2 (30-175)	0.2-1.2 (30-175)	0.2-1.2 (30-175)	0.2-1.2 (30-175)	0.2-1.2 (30-175)	0.2-1.2 (30-175)	0.2-1.2 (30-175)			
Garden Hose (inlet)																							
Recommended Length	m	5 to 10	5 to 10	5 to 10	5 to 10	5 to 10	5 to 10	5 to 10	5 to 10	5 to 10	5 to 10	5 to 10	5 to 10	5 to 10	5 to 10	5 to 10	5 to 10	5 to 10	5 to 10	5 to 10			
Diameter	inch	1/2	1/2	1/2	1/2	1/2	1/2	1/2	1/2	1/2	1/2	1/2	1/2	1/2	1/2	1/2	1/2	1/2	1/2	1/2			
Power Data																							
Rated working pressure	MPa (psi)	8.0 (1160)	8.0 (1160)	8.0 (1160)	8.0 (1160)	8.0 (1160)	8.7 (1261)	8.7 (1261)	8.7 (1261)	8.7 (1261)	8.7 (1261)	8.7 (1261)	8.7 (1261)	8.7 (1261)	8.7 (1261)	9.7 (1406)	9.7 (1406)	9.7 (1406)	9.3 (1348)	9.3 (1348)			
Maximum permissible pressure	MPa (psi)	12 (1740)	12 (1740)	12 (1740)	12 (1740)	12 (1740)	13 (1885)	13 (1885)	13 (1885)	13 (1885)	13 (1885)	13 (1885)	13 (1885)	13 (1885)	13 (1885)	14.5 (2100)	14.5 (2100)	14.5 (2100)	13.9 (2016)	13.9 (2016)			
Rated water flow rate	L/min (L/h)	5.5 (330)	5.5 (330)	5.5 (330)	5.5 (330)	5.5 (330)	5.5 (330)	5.5 (330)	5.5 (330)	5.5 (330)	5.5 (330)	6.0 (360)	6.0 (360)	6.0 (360)	6.0 (360)	6.0 (360)	6.0 (360)	6.0 (360)	6.0 (360)	6.0 (360)			
Maximum water flow rate	L/min (L/h)	6.0 (360)	6.0 (360)	6.0 (360)	6.0 (360)	6.0 (360)	6.0 (360)	6.0 (360)	6.0 (360)	6.0 (360)	6.0 (360)	6.3 (380)	6.3 (380)	6.3 (380)	6.3 (380)	6.3 (380)	6.3 (380)	6.3 (380)	6.3 (380)	6.3 (380)			
Gun recoil force	N	<12	<12	<12	<12	<12	<13	<13	<13	<13	<13	<14	<14	<14	<14	<14	<14	<14	<14	<14			
Noise level as per ABNT NBR 13910 + IEC 60704:																							
Sound pressure L _{ea}	dB(A)	75	75	75	75	75	75	75	75	75	75	75	75	75	75	83	83	83	83	83			
K uncertainty	dB(A)	2	2	2	2	2	2	2	2	2	2	2	2	2	2	2	2	2	2	2			
Hand-arm vibration as per IEC 60335-2-79:																							
Total vibration value a _v	m/s ²	<2.5	<2.5	<2.5	<2.5	<2.5	<2.5	<2.5	<2.5	<2.5	<2.5	<2.5	<2.5	<2.5	<2.5	<2.5	<2.5	<2.5	<2.5	<2.5			
Measurements and Weights																							
Length	mm	323	323	323	323	323	323	323	323	323	323	323	323	323	323	323	323	323	323	323			
Width	mm	409	409	409	409	409	409	409	409	409	409	409	409	409	409	409	409	409	409	409			
Height	mm	825	825	825	825	825	825	825	825	825	825	825	825	825	825	825	825	825	825	825			
Mass	kg	14.0	14.0	13.7	13.7	13.7	14.2	14.2	13.9	13.9	13.9	14.4	14.4	14.1	14.1	14.1	15.0	15.0	14.7	14.7			