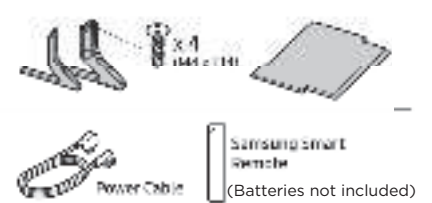
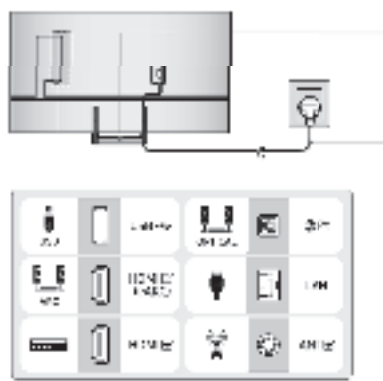
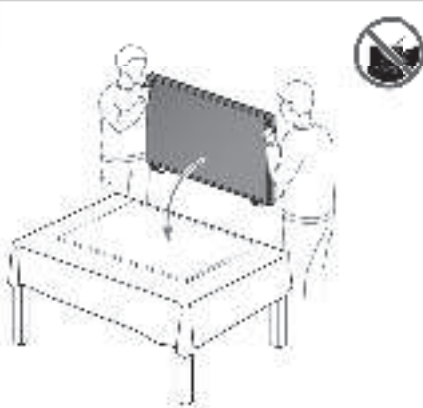


Unpacking and Installation Guide



Please Read this guide carefully before using the device and keep it for future reference.

1



Accessory type and quantity may vary depending on the model.

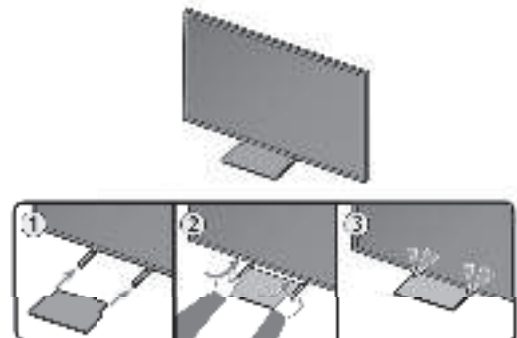
2



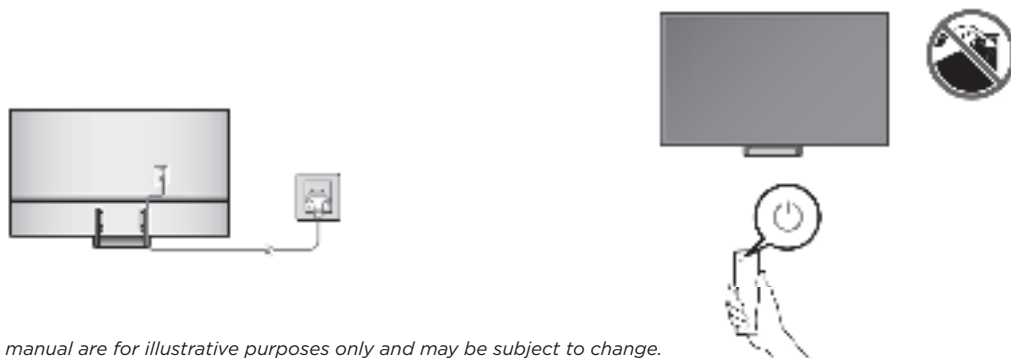
3

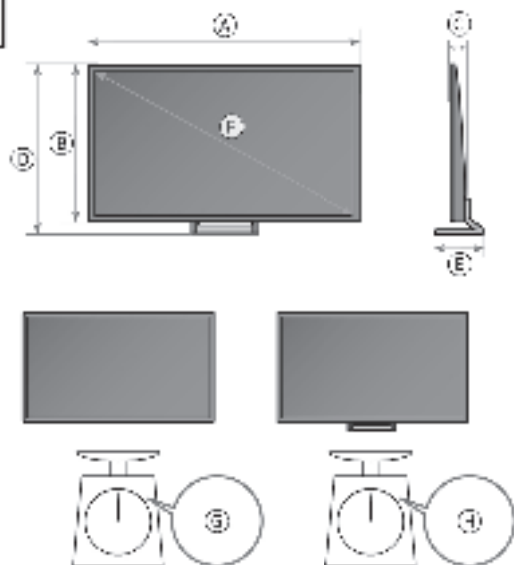


4



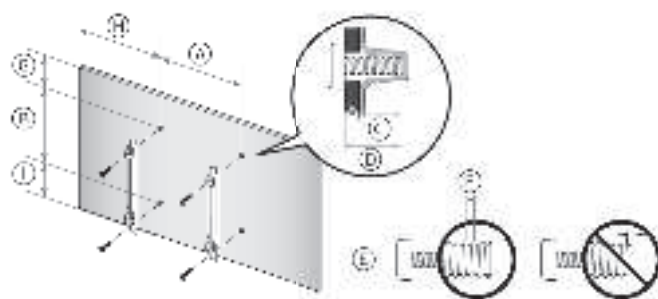
5





	(A)	(B)	(C)	(D)	(E)	(F)	(G)	(H)
QN55Q7N QN55Q7U	48.2 inches (1223.8 mm)	27.1 inches (688.7 mm)	1.0 inches (25.4 mm)	30.2 inches (769.3 mm)	10.1 inches (256.5 mm)	54.6 inches	25.5 lbs (11.6 kg)	37.3 lbs (16.9 kg)

* C + D + E



	Yes (A) or (B) (mm)	(C) (mm)	(D)	(E) x (F)	(G) (mm)	(H) (inches)	(I) (inches)	(J) (inches)
QN55Q7N QN55Q7U	200 x 220	70-110	(C) + *	75	125	9.3	10.5	10.6

* C + D + E

* Wall-Mount Bracket

NOTES:

- The remote control vary depend of model: The buttons on the remote control may have a different name or location than the remote control shows in this manual.
- The cables mentioned in this guide is not supplied with your unit.
- The actual number of ports may have a different name or location.
- Wall mount kit not included.

