



TWC200WU

Wireless outdoor camera

Wireless outdoor camera captures events around your property.
View and communicate with your visitors from anywhere.

Items included



Wireless Outdoor Camera

Magnetic Base Mount

Charging Cable



Thank You Card

Warranty Card

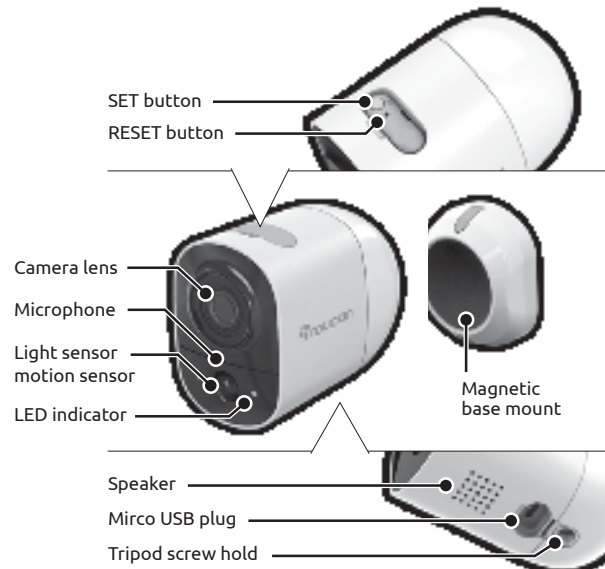
Wall Anchors

Screws

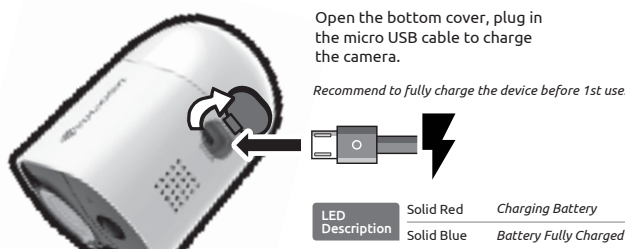
Adhesive Tape

Quick Start Guide

Get to know your wireless outdoor camera



Charge your wireless outdoor camera



Setup your wireless outdoor camera

Download Toucan app

Scan QR code or visit

www.toucansmarthome.com/pages/smarthomeapp

Available at Apple® App Store® and Google Play™



Open the app to add camera.



Press and hold the SET button until LED light blinks to enter the setup mode.



Follow the camera voice navigation to complete setup.



After setup and pairing, you can change the language of your app within the settings section

Flashing BLUE

Setup Mode

Flashing PURPLE

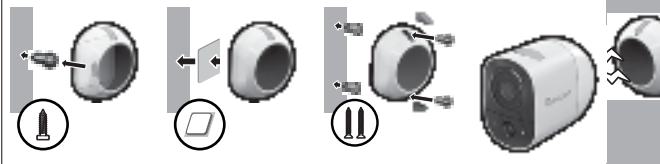
Connecting to cloud server

Flashing RED

Connection Failed

LED Description

Install your wireless outdoor camera



- * If using 3M adhesive only, please allow 24-48 hours before placing the camera onto the mounting base to ensure maximum bonding strength. Apply 3M adhesive to dry surfaces only.
- ** You can mount the camera using just the adhesive on UPVC, wooden or smooth surface door frames (not suitable for brick or stone)

For FAQ's, Video's and support, please visit our website: www.toucansmarthome.co.uk

Regulations & compliance

FCC Statement

Warning: Changes or modifications to this unit not expressly approved by the party responsible for compliance could void the user's authority to operate the equipment.

NOTE: This equipment has been tested and found to comply with the limits for a Class B digital device, pursuant to Part 15 of the FCC Rules. These limits are designed to provide reasonable protection against harmful interference in a residential installation. This equipment generates, uses and can radiate radio frequency energy and, if not installed and used in accordance with the instructions, may cause harmful interference to radio communications.

However, there is no guarantee that interference will not occur in a particular installation. If this equipment does cause harmful interference to radio or television reception, which can be determined by turning the equipment off and on, the user is encouraged to try to correct the interference by one or more of the following measures:

- Reorient or relocate the receiving antenna.
- Increase the separation between the equipment and receiver.
- Connect the equipment into an outlet on a circuit different from that to which the receiver is connected.
- Consult the dealer or an experienced radio/TV technician for help.

This device complies with Part 15 of the FCC Rules. Operation is subject to the following two conditions:

- (1) This device may not cause harmful interference.
- (2) This device must accept any interference received, including interference that may cause undesired operation.

ISED Regulatory Compliance

This device contains licence-exempt transmitter(s)/receiver(s) that comply with Innovation, Science and Economic Development Canada's licence-exempt RSS(s). Operation is subject to the following two conditions:

1. This device must not cause interference.
2. This device must accept any interference, including interference that may cause undesired operation of the device.

L'émetteur/récepteur exempt de licence contenu dans le présent appareil est conforme aux CNR d'Innovation, Sciences et Développement économique Canada applicables aux appareils radio exempts de licence.
L'exploitation est autorisée aux deux conditions suivantes :

1. L'appareil ne doit pas produire de brouillage;
2. L'appareil doit accepter tout brouillage radioélectrique subi, même si le brouillage est susceptible d'en compromettre le fonctionnement.

RF Exposure Compliance

This equipment complies with FCC/IC radiation exposure limits set forth for an uncontrolled environment. This equipment should be installed and operated with minimum distance 20cm between the radiator and your body. Cet équipement est conforme aux limites d'exposition aux radiations FCC/IC établies pour un environnement non contrôlé. Cet équipement doit être installé et utilisé avec une distance minimale de 20 cm entre le radiateur et votre corps.

EU Compliance

VuPoint (Europe) Company Limited declares that the equipment complies with Directive 2014/53/EU.

Full declaration text available at: www.toucansmarthome.co.uk/pages/certificates


VuPoint Solutions, Inc. (USA):

710 Nogales Street, City of Industry, CA 91748

VuPoint (Europe) Company Limited:

Innovation Center, Longbridge Technology Park, Longbridge, Birmingham B31 2TS

For Europe and UK region, please visit www.toucansmarthome.co.uk
For North and South America, please visit www.toucansmarthome.com

Follow us for the latest updates:

Facebook.com/toucansmarthomeeu

YouTube.com/toucansmarthome

Instagram.com/toucansmarthomeeu

