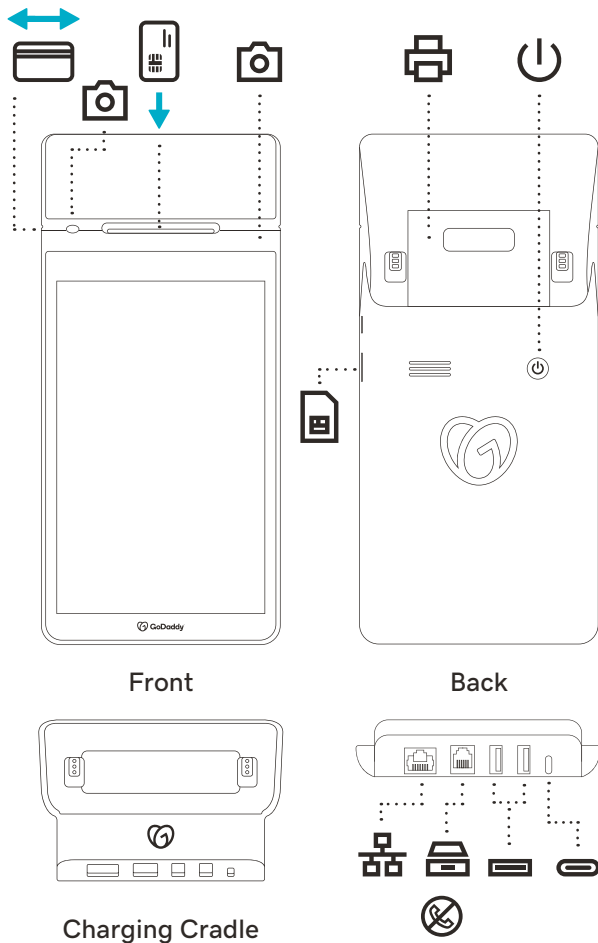
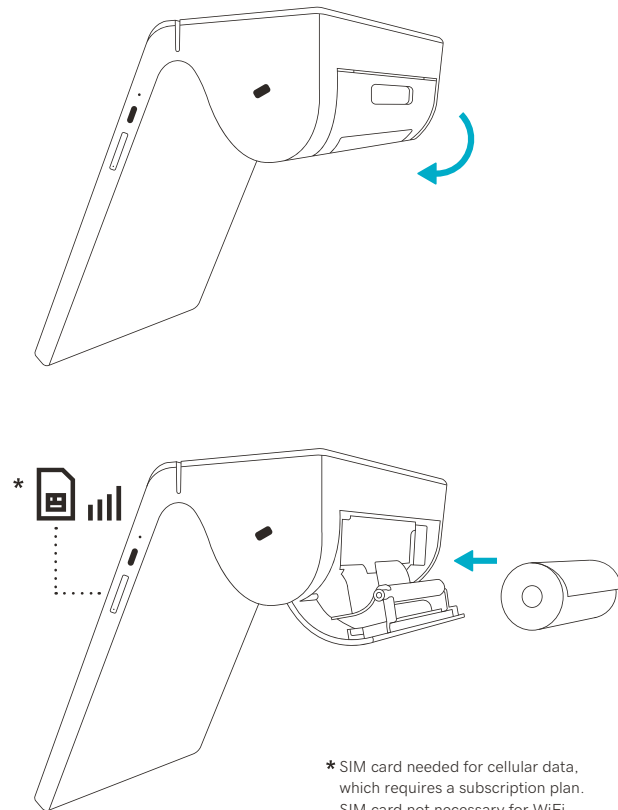


# Quick Start Guide

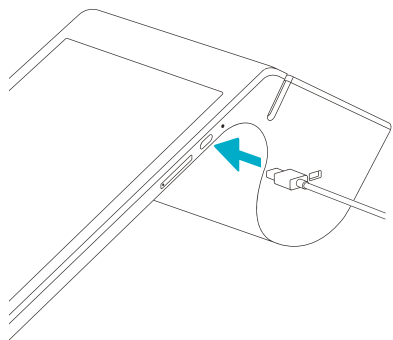
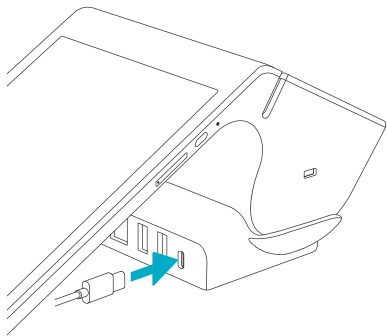


# 1

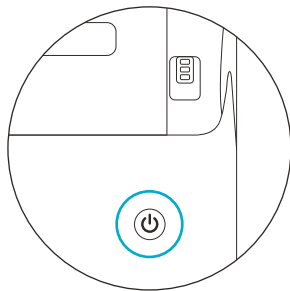


\* SIM card needed for cellular data, which requires a subscription plan. SIM card not necessary for WiFi.

2



3



LED



# Sell Anything. Anywhere.

We have all the ways to help you  
sell more and grow your business.

For setup help, go to  
[GoDaddy.com/smart-terminal/help](https://GoDaddy.com/smart-terminal/help)



FRONT

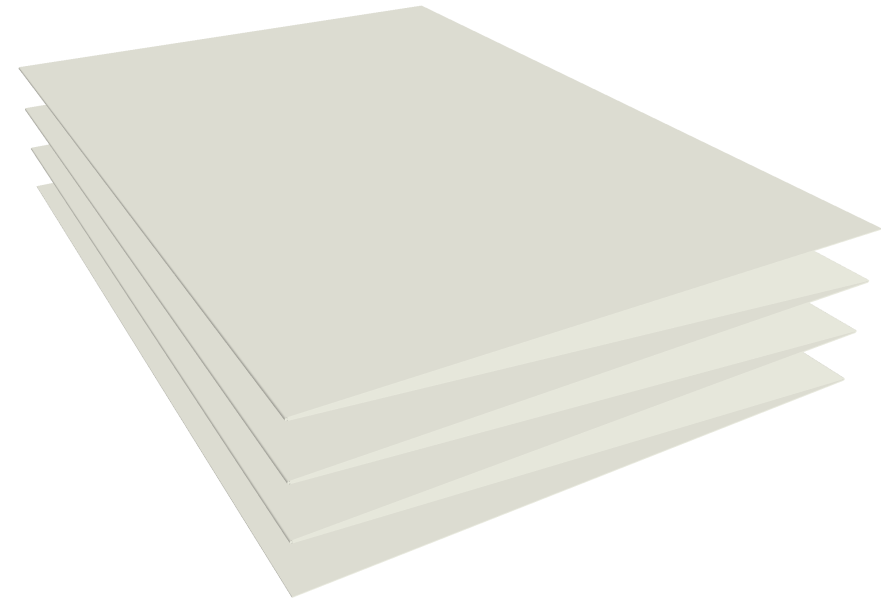
<div>GoDaddy</div> <div>Poynt Smart Terminal</div> <div>Safety &amp; Regulatory</div>	<div>Package Contents</div> <div>Device X 1</div> <div>Docking Station X 1</div> <div>USB-C Cable X 1</div> <div>Power Adapter X 1</div> <div>Plug Adapter Kit X 1</div> <div>Receipt Roll X 1</div> <div>Quick Start Guide X 1</div>	<div>SoC</div> <div>OS</div> <div>8" LCD</div> <div>8" Touch Panel</div> <div>5"LCD</div> <div>5" Touch Panel</div> <div>System Memory</div> <div>Storage (Flash Memory)</div> <div>Communication</div> <div>WLAN</div> <div>WWAN</div> <div>WPAN</div> <div>NFC</div> <div>Speaker</div> <div>Buzzer</div> <div>Sensors</div> <div>Printer</div>	<div>Camera</div> <div>Merchant Facing</div> <div>Camera</div> <div>Barcode Scan Camera</div> <div>Payment Module</div> <div>SoC</div> <div>Power</div> <div>Battery Pack</div> <div>Power Adapter</div> <div>IO Port</div> <div>SIM</div> <div>USB</div> <div>Card reader</div> <div>Button/Switch</div> <div>LED Indicator</div> <div>Housing</div> <div>Dimensions</div> <div>Weight</div> <div>Dock</div>	<div>Review the Quick Start Guide before using the Poynt Smart Terminal. Visit support.poynt.com</div> <div>Operating Environment</div> <div>Long Term Storage Environment</div> <div>Warning</div> <div>Failure to follow instructions and properly set up, use and care for this product can increase the risk of serious injury or death, or damage to the device or devices.</div> <div>Battery</div> <div>For optimal lithium-ion battery performance, follow advised guidelines.</div>	<div>Operating Environment Temperature.</div> <div>Storage Environment Temperature.</div> <div>Charge Poynt Smart Terminal with approved Docking Station or approved Power Adapter set to 100% full charge at least every 6 months.</div> <div>CAUTION</div> <div>Risk of explosion if the battery is replaced by an incorrect type.</div> <div>Disposal of a battery into fire or a hot oven, or mechanically crushing or cutting of a battery, that can result in an explosion.</div> <div>Leaving a battery in an extremely high temperature surrounding environment that can result in an explosion or the leakage of flammable liquid or gas.</div> <div>A battery subjected to extremely low air pressure that may result in an explosion or the leakage of flammable liquid or gas.</div> <div>Please note:</div> <div>Not following above guidelines may result in the battery capacity draining quicker, increase duration to achieve full charge, impede ability to achieve full charge, and deplete battery to zero capacity.</div> <div>Not following above guidelines may result in the product not functioning, rendering it unusable or unrecoverable.</div> <div>Disposal Information</div> <div>Recycle and dispose of in accordance with local, state</div>	<div>and federal regulations. This device must be recycled or disposed of separately from household waste or recycling.</div> <div>Regulatory Information</div> <div>Regulatory information, certification, and compliance information can be found at poynt.com/legal. Check the E-labels from Settings → Certifications.</div> <div>FCC Compliance Statement</div> <div>This device complies with Part 15 of the FCC Rules. Operation is subject to the following two conditions: (1) this device may not cause harmful interference, and (2) this device must accept any interference received, including interference that may cause undesired operation.</div> <div>Changes or modifications not expressly approved by the party responsible for compliance could void the user's authority to operate the equipment.</div> <div>This equipment has been tested and found to comply with the limits for a Class B digital device, pursuant to Part 15 of the FCC Rules. These limits are designed to provide reasonable protection against harmful interference in a residential installation. This equipment generates, uses and can radiate radio frequency energy and, if not installed and used in accordance with the instructions, may cause harmful interference to radio communications. However, there is no guarantee that interference will not occur in a</div>


617.05

BACK

<div>particular installation.</div> <div>If this equipment does cause harmful interference to radio or television reception, which can be determined by turning the equipment off and on, the user is encouraged to try to correct the interference by one or more of the following measures:</div> <div>Reorient or relocate the receiving antenna.</div> <div>Increase the separation between the equipment and receiver.</div> <div>Connect the equipment into an outlet on a circuit different from that to which the receiver is connected.</div> <div>Consult the dealer or an experienced radio/TV technician for help.</div> <div>ISED Compliance Statement</div> <div>This device contains licence-exempt transmitter(s)/ receiver(s) that comply with Innovation, Science and Economic Development Canada's licence-exempt RSS(s). Operation is subject to the following two conditions:</div> <div>(1) This device may not cause interference.</div> <div>(2) This device must accept any interference, including interference that may cause undesired operation of the device.</div> <div>L'émetteur/récepteur exempt de licence contenu dans le présent appareil est conforme aux CNR d'Innovation, Sciences et Développement économique Canada applicables aux appareils radio exempts de</div>	<div>licence. L'exploitation est autorisée aux deux conditions suivantes:</div> <div>(1) L'appareil ne doit pas produire de brouillage;</div> <div>(2) L'appareil doit accepter tout brouillage radioélectrique subi, même si le brouillage est susceptible d'en compromettre le fonctionnement.</div> <div>SAR statement</div> <div>This equipment complies with FCC/ISED radiation exposure limits set forth for an uncontrolled environment. End user must follow the specific operating instructions for satisfying RF exposure compliance. This transmitter must not be co-located or operating in conjunction with any other antenna or transmitter.</div> <div>The portable device is designed to meet the requirements for exposure to radio waves established by the ISED. These requirements set a SAR limit of 1.6 W/kg averaged over one gram of tissue. The highest SAR value reported under this standard during product certification for use when properly worn on the body.The SAR test distance for extremity is 0mm, and the SAR test distance for body is 10mm.</div> <div>Cet équipement est conforme aux limites d'exposition aux rayonnements FCC/ISED établies pour un environnement non contrôlé. L'utilisateur final doit suivre les instructions spécifiques pour satisfaire les normes. Cet émetteur ne doit pas être co-implanté ou fonctionner en conjonction avec toute autre antenne ou transmetteur.</div>	<div>Le dispositif portatif est conçu pour répondre aux exigences d'exposition aux ondes radio établie par le développement énergétique DURABLE. Ces exigences ont un SAR limite de 1,6 W/kg en moyenne pour un gramme de tissu. La valeur SAR la plus élevée signalée en vertu de cette norme lors de la certification de produit à utiliser lorsqu'il est correctement porté sur le corps.</div> <div>California Proposition 65 Warning:</div> <div>Warning: This product can expose you to DEHP, which are known to the State of California to cause cancer and birth defects or other reproductive harm. For more information go to <a href="http://www.P65Warnings.ca.gov">www.P65Warnings.ca.gov</a>.</div> <div>EU Compliance Statement</div> <div>This product complies with the RED Directive 2014/53/EU &amp; RoHS 2011/65/EU. Point of contact: Poynt, LLC, Attn: Compliance, 2155 E GoDaddy Way, Tempe, AZ, 85284 USA</div> <div><a href="https://www.poynt.com/legal">https://www.poynt.com/legal</a></div> <div>Use Restriction: This device is restricted to indoor use when operating in the 5150 to 5350 MHz frequency range.</div>	<div>European Union- Disposal Information</div> <div>This symbol on the product or its batteries or its packaging means that this product and any batteries it contains must not be disposed of with your household waste. Instead, it is your responsibility to hand this over to an applicable collection point for the recycling of batteries and electrical and electronic equipment.</div> <div>CE</div> <div>This device was tested for typical body worn operations. To comply with RF exposure requirements, a minimum separation distance of 0cm must be maintained between the user's body and the handset, including the antenna. Hereby, Poynt, LLC declares that the radio equipment type PST3 is in compliance with Directive 2014/53/EU. The full text of the EU declaration of conformity is available at the following internet address: <a href="http://www.poynt.com/legal">http://www.poynt.com/legal</a>.</div> <div>This equipment complies with Directive 2014/53/EU radiation exposure limits set forth for an uncontrolled environment. End user must follow the specific operating instructions for satisfying RF exposure compliance. This transmitter must not be co-located or operating in conjunction with any other antenna or transmitter. The portable device is designed to meet the requirements for exposure to radio waves established by European Union market (France).</div>	<div>Certification Information:</div> <div>SAR Limit:</div> <div>Limbs: 4.0W/kg</div> <div>Brain/Body: 2.0W/kg</div> <div>SAR Value:</div> <div>Limbs: 3.62W/kg</div> <div>Brain/Body: 1.33W/kg</div> <div>Maximum EIRP for EU</div> <div>Bluetooth: 2402MHz-2480MHz</div> <div>8.18dBm</div> <div>Bluetooth LE: 2402MHz-2480MHz</div> <div>2.94dBm</div> <div>Wifi: 2412MHz-2472MHz/2422MHz-2462MHz</div> <div>16.15dBm</div> <div>Wifi: 5150MHz-5725MHz</div> <div>19.92dBm</div> <div>Wifi: 5725MHz-5875MHz</div> <div>13.27dBm</div> <div>NFC: 13.56MHz</div> <div>-20.68dBuA/m</div> <div>GSM/00: 880-915MHz/925-960MHz</div> <div>33dBm</div>	<div>DSC1800-1710-1785MHz/1805-1880MHz</div> <div>30dBm</div> <div>WCDMA Band 1: 1920-1980MHz/2110-2170MHz</div> <div>24dBm</div> <div>WCDMA Band 8: 880-915MHz/925-960MHz</div> <div>24dBm</div> <div>LTE Band 1: 1920-1980MHz/2110-2170MHz</div> <div>LTE Band 3: 1710-1785 MHz/1805-1880 MHz</div> <div>LTE Band 7: 2500-2570 MHz/2620-2690 MHz</div> <div>23dBm</div> <div>LTE Band 8: 880-915 MHz/925-960 MHz</div> <div>LTE Band 20: 832-862 MHz/791-821 MHz</div> <div>LTE Band 28: 703-748 MHz/758-803 MHz</div>	<div>LTE Band 38: 2570-2620 MHz/2570-2620 MHz</div> <div>LTE Band 40: 2300-2400 MHz/2300-2400 MHz</div> <div>Copyright © 2021 Poynt, LLC. All Rights Reserved. The Poynt word mark is a registered trademark of Poynt, LLC in the US and other countries. The GoDaddy word mark is a registered trademark of GoDaddy Operating Company, LLC in the US and other countries.</div> <div>REV 06</div>
--	---	--	---	---	--	--

617.05



<div>FLIHUA</div>		
Client		
GoDaddy		
Project		
501514-01-GDD GDD-Poynt C S&R		
Designer	Date	
Lau	10/19/2021	
LD Part Number	Revision	# per Set
108416-02-GDD	06	0
Description		
Safety and Regulations		
Revision Description		
REV 06		
Notes		
1.  PRINTS AS: Pantone Black C		
2.		
3.		
Nominal Length, Width, & Depth (if applicable)		
0.00 * 0.00 * 0.00 mm		
Net Blank Size (if applicable)		
617.05 * 131.48 mm		
Material Description		
80gsm Wood-free Paper Un-coated (0.09mm/3.7pt)		
Corrugation/Grain (if applicable)		
horizontal		
Print Instructions		
Offset 1C/Offset 1C		
Secondary Finishing		
/		
Rule (if applicable)	Adhesive	
2285.9 mm	0 mm	
Line Type Legend		
Construction (do not tool)		
Annotation (do not tool)		
Cut		
Crease		
Reverse crease		
PROPRIETARY and CONFIDENTIAL: The information contained in this drawing is the sole property of Lihua Direct, LLC. Any reproduction in part, or as a whole with the written permission of Lihua Direct, LLC, is prohibited.		