

2 Drawer Lateral File Cabinet Installation Instructions

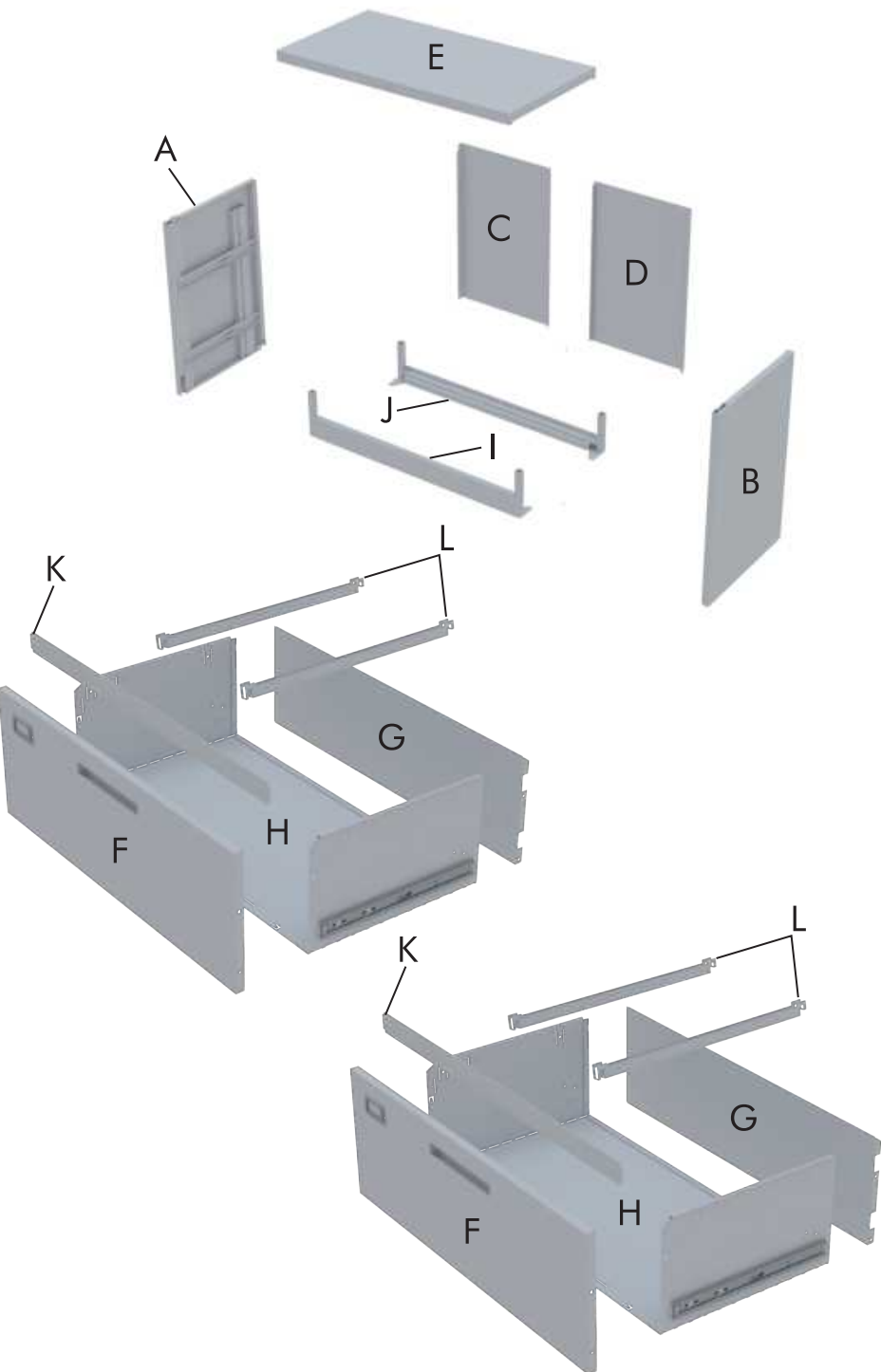


Please scan the QR code
Watch product installation video

CONTENTS

- 01 ● Product Disassembly Pictures
- 02 ● Product Accessories Introduction
- 03 ● Base Installation
- 04 ● Back Panel Installation
- 05 ● Top Plate Installation
- 06 ● Mounting Screw/Test Drawer Key
- 07 ● Adjust Lock Lever
- 08 ● Drawer Installation
- 11 ● Hanging Rod Installation
- 12 ● Finished Product Display

2 Drawer Lateral File Cabinet Installation Instructions

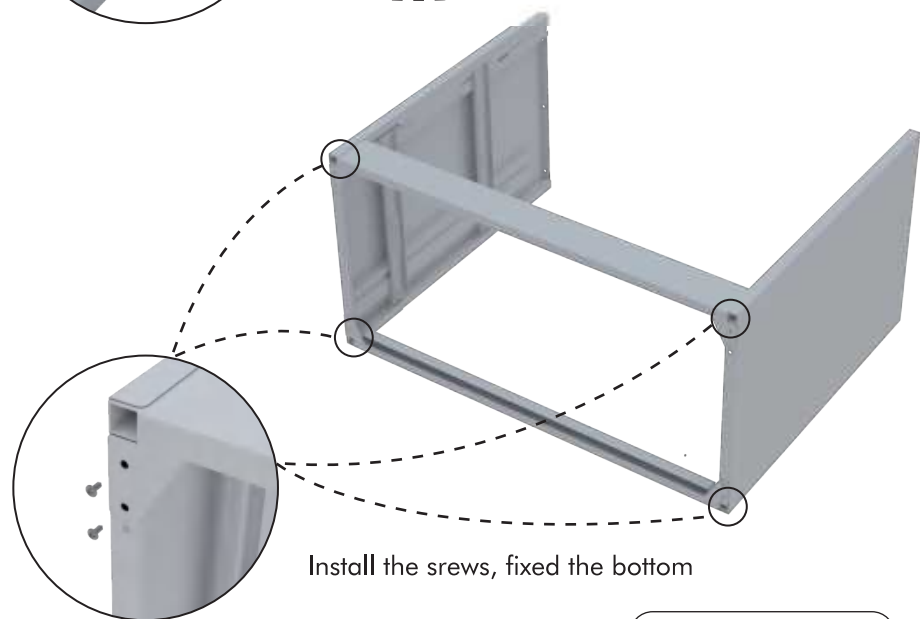
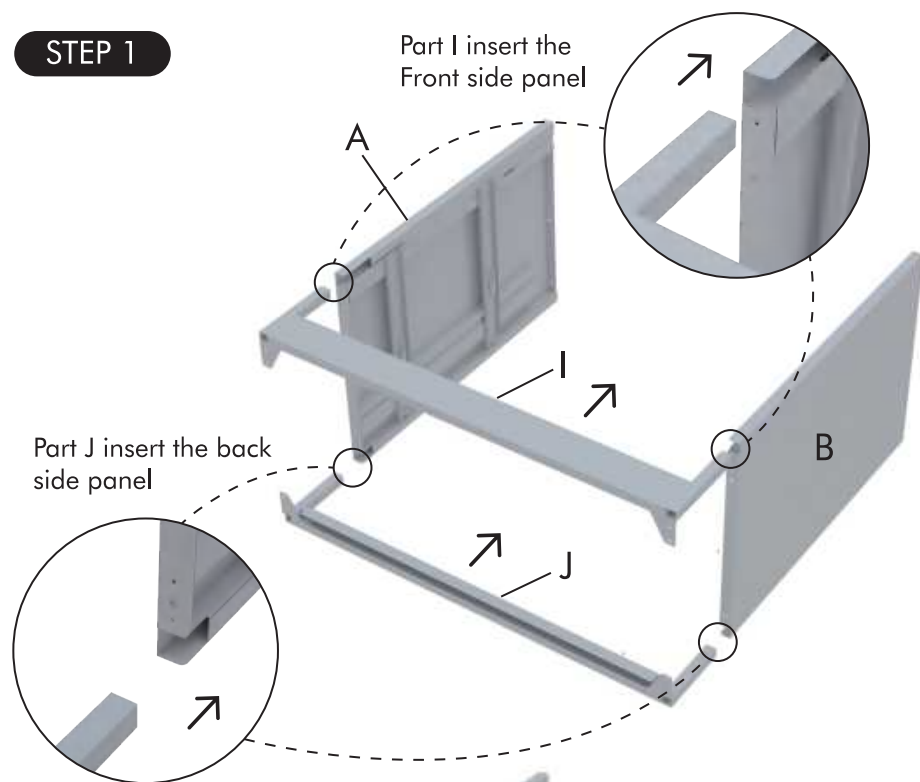


<div>A × 1</div>	<div>B × 1</div>	<div>C × 1</div>	<div>D × 1</div>		
<div>E × 1</div>	<div>F × 2</div>				
<div>G × 2</div>	<div>H × 2</div>				
<div>I × 1</div>	<div>J × 1</div>				
<div>K × 2</div>	<div>L × 4</div>	<div>M × 33</div>	<div>N × 4</div>	<div>O × 4</div>	<div>P × 2</div>

2 Drawer Lateral File Cabinet Installation Instructions

STEP 1

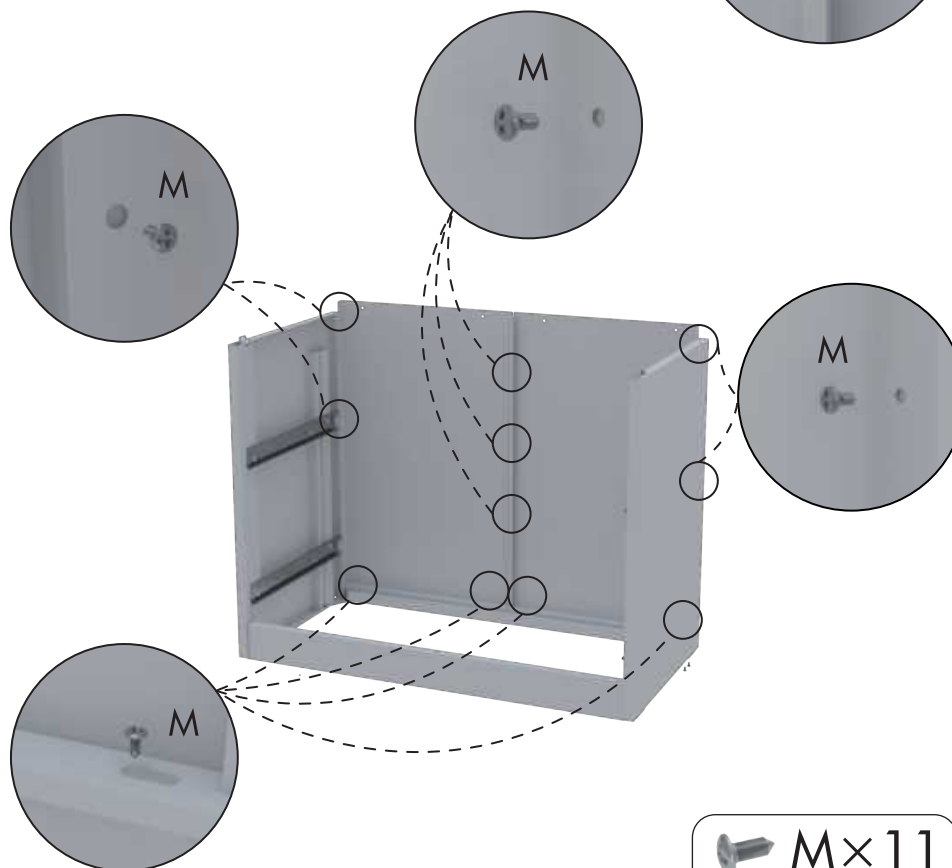
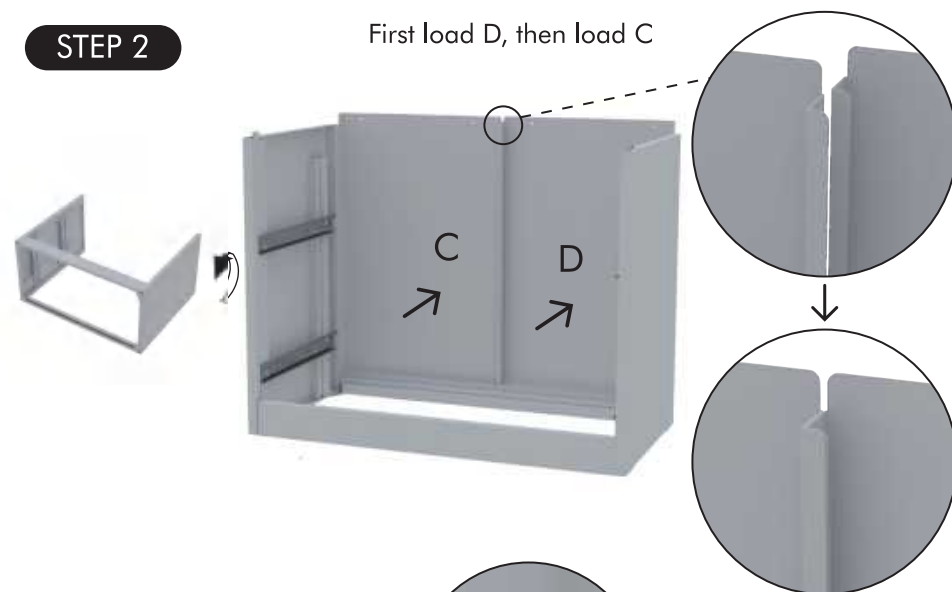
Part I insert the
Front side panel



 M×8

STEP 2

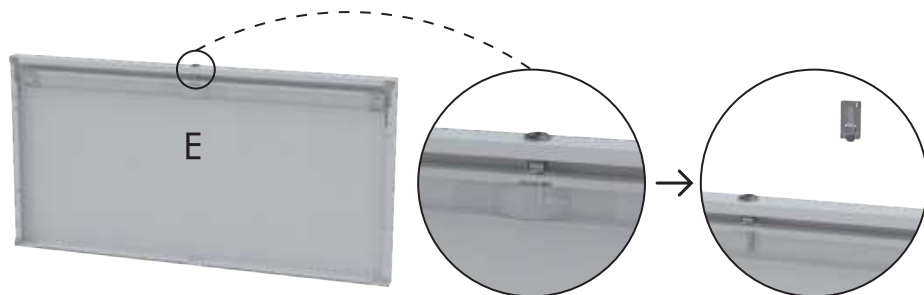
First load D, then load C



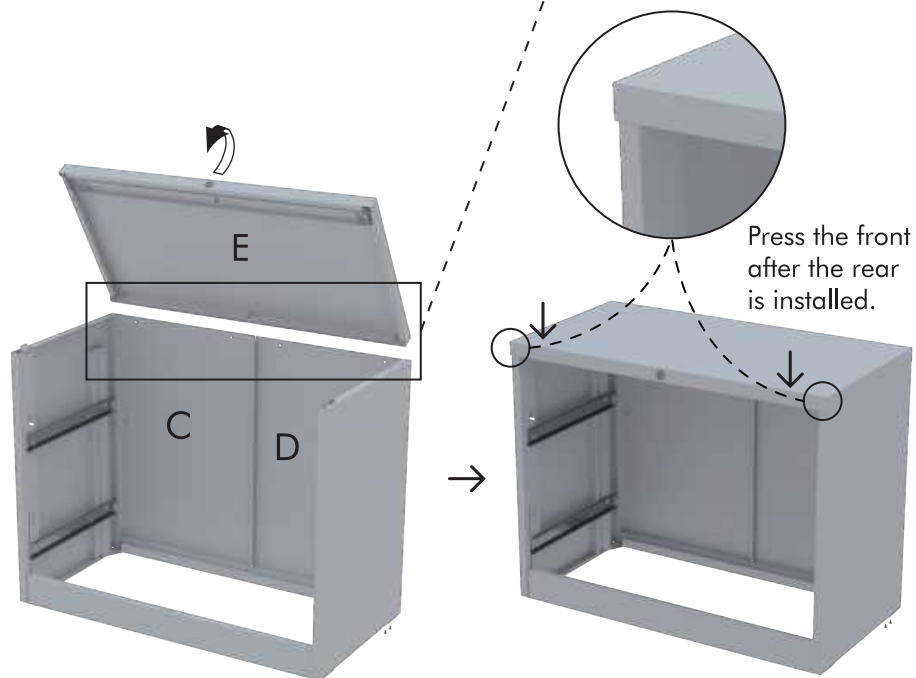
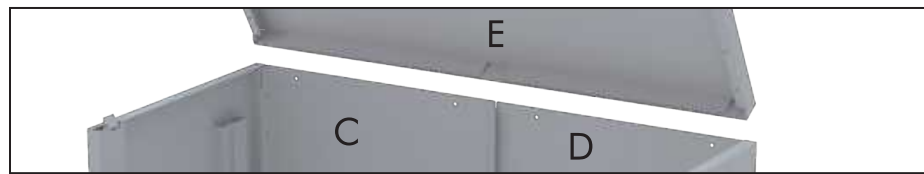
 M×11

STEP 3

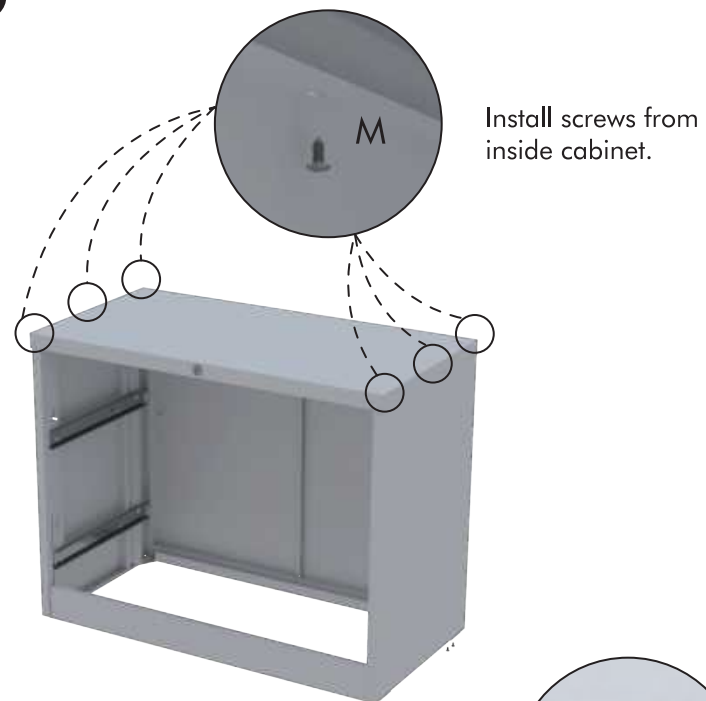
Tear off the tape, cut the ribbon, and take out the key.



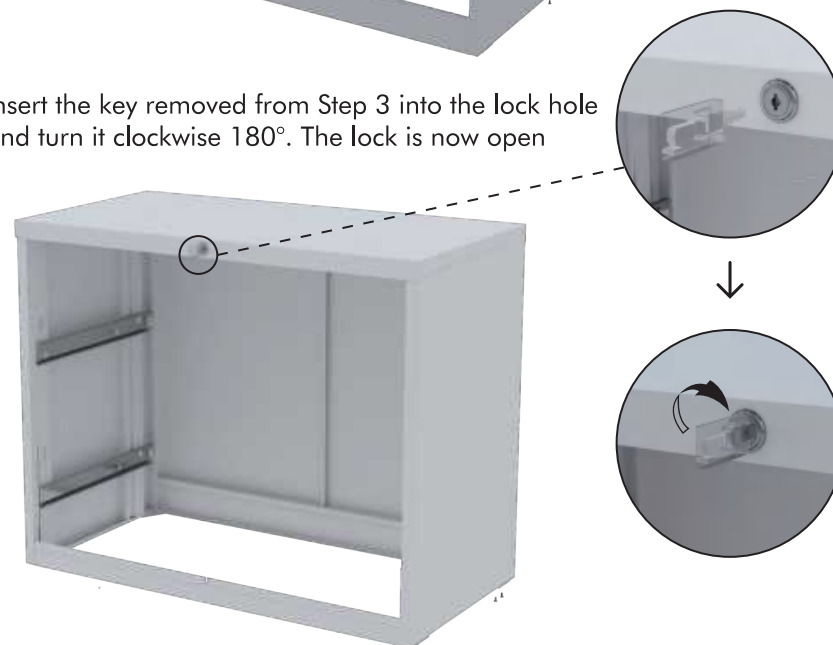
C and D must be inserted into the card slot behind E



STEP 4

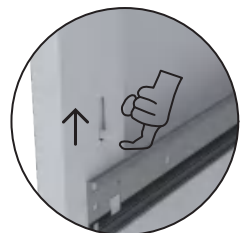


Insert the key removed from Step 3 into the lock hole and turn it clockwise 180°. The lock is now open

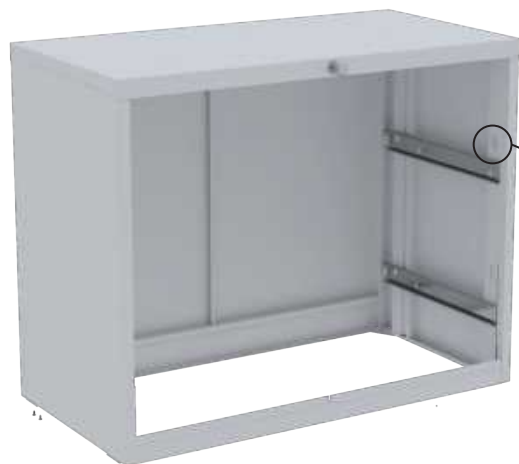
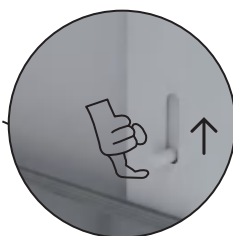


STEP 5

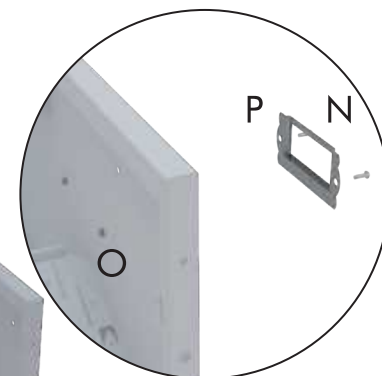
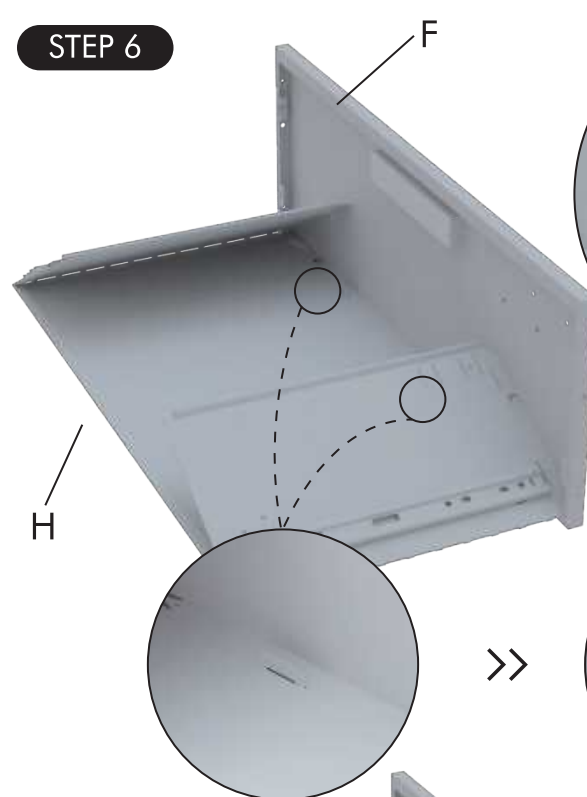
Pull the left lock lever up.



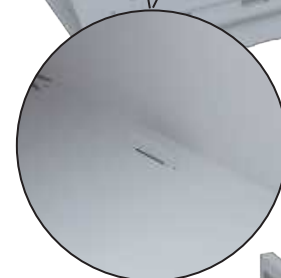
Pull the right lock lever up.



STEP 6



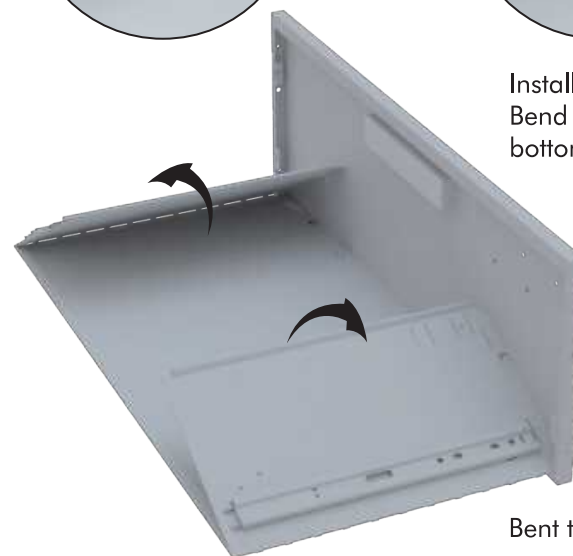
Install Part P, install 2 screws from the front panel



>>



Install the Drawer
Bend the buckle at the bottom position



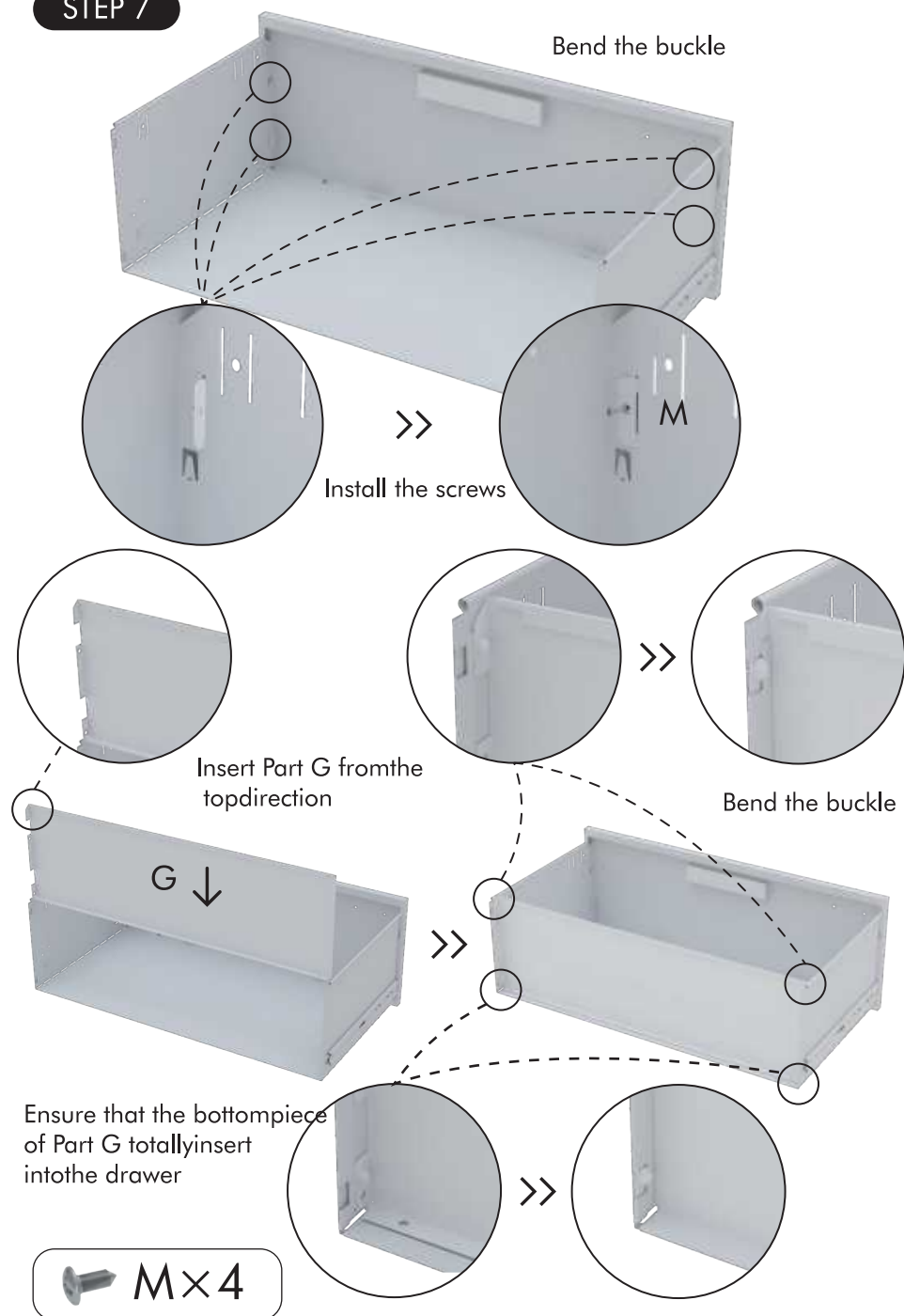
Bent the drawer to 90°

 N×2

 O×2

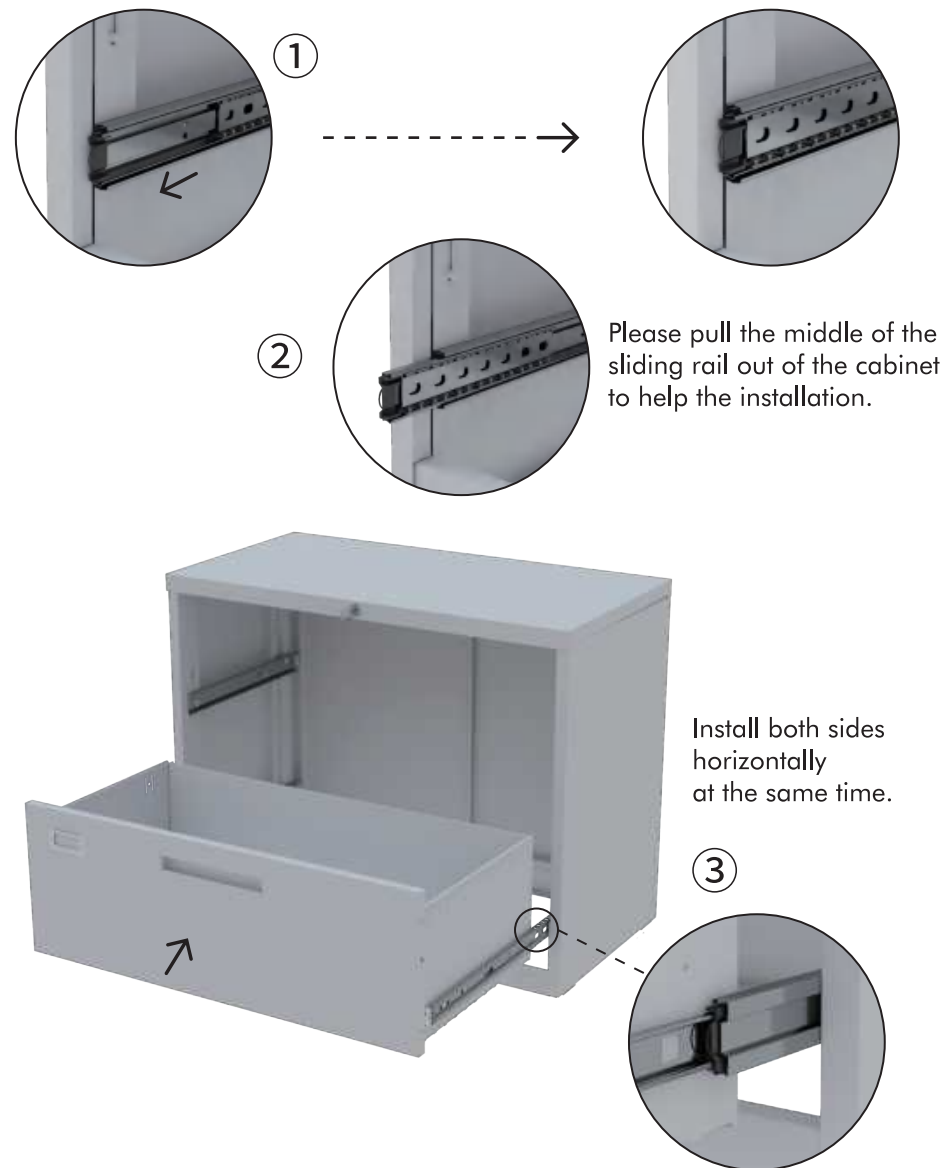
 P×2

STEP 7



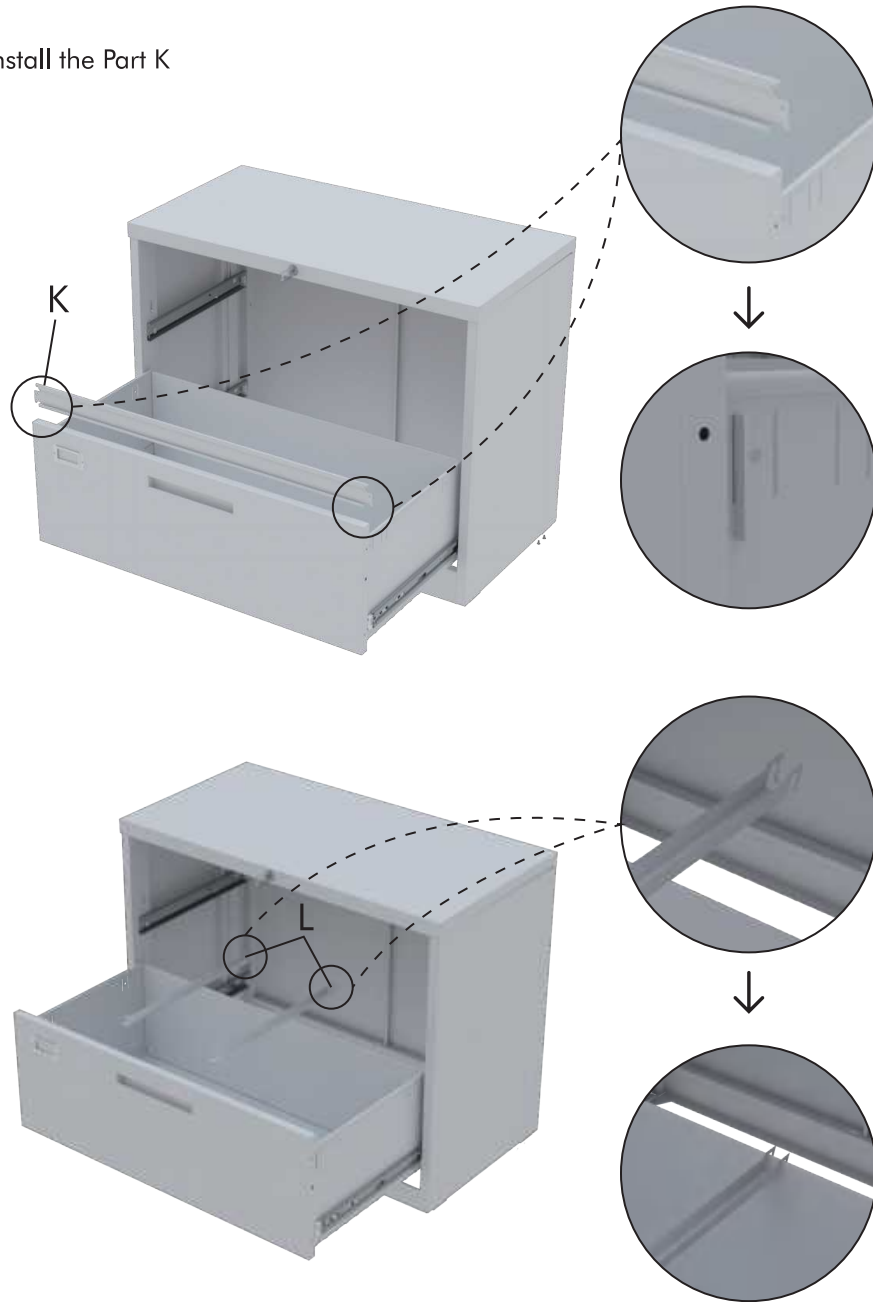
STEP 8

Before installing the drawer, pull the ball to the outermost end



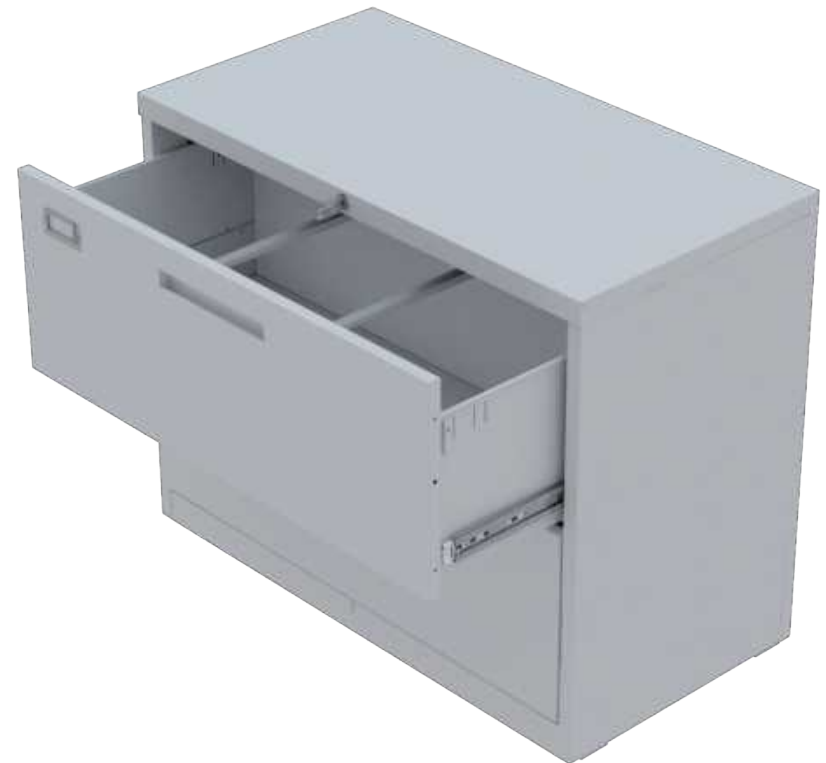
STEP 9

Install the Part K



STEP 10

Repeat steps 6,7,8, and 9 to install another drawer.
Note: The pushing of the top drawer will squeeze the spare key.



STEP 11

Turn the key 180° counterclockwise and the drawer is locked

